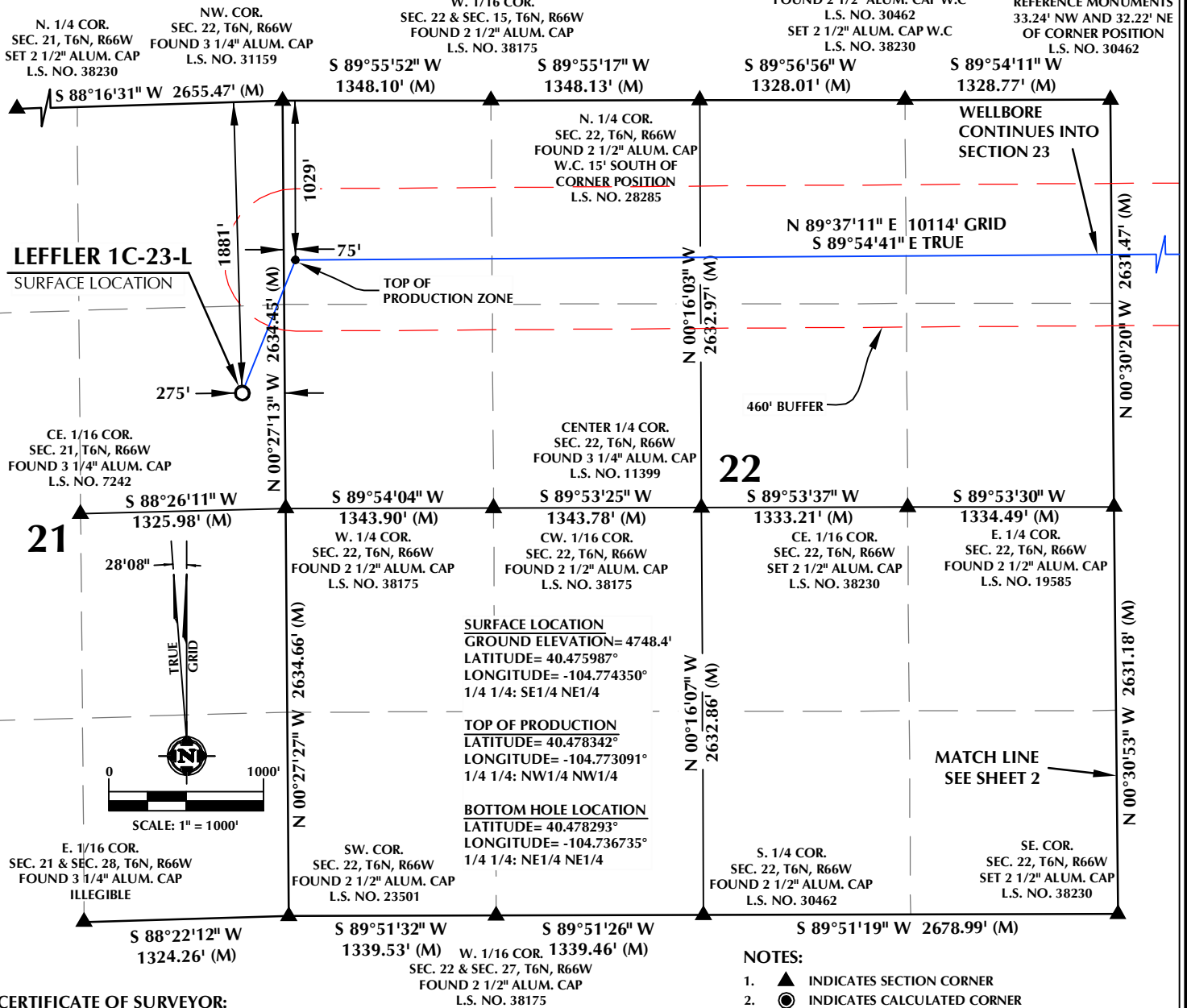


T6N, R66W



CERTIFICATE OF SURVEYOR:

THIS IS TO CERTIFY THAT THE ABOVE PLAT WAS PREPARED FROM FIELD NOTES OF ACTUAL SURVEY MADE BY ME OR UNDER MY SUPERVISION AND THAT THE SAME ARE TRUE AND CORRECT TO THE BEST OF MY KNOWLEDGE AND BELIEF. THIS CERTIFICATE DOES NOT REPRESENT A LAND SURVEY PLAT OR IMPROVEMENT SURVEY PLAT AS DEFINED BY C.R.S. 38-51-102 AND CANNOT BE RELIED UPON TO DETERMINE OWNERSHIP.

John R. Slaugh
JOHN R. SLAUGH
 PROFESSIONAL LAND SURVEYOR
 COLORADO REGISTRATION NUMBER 38230

NOTICE:
 ACCORDING TO COLORADO STATE LAW YOU MUST COMMENCE ANY LEGAL ACTION BASED UPON ANY DEFECT IN THIS SURVEY WITHIN THREE YEARS AFTER YOU FIRST DISCOVER SUCH DEFECT. IN NO EVENT MAY ANY ACTION BASED UPON ANY DEFECT IN THIS SURVEY BE COMMENCED MORE THAN TEN YEARS FROM THE DATE ON THE CERTIFICATION SHOWN HEREON.

WELL DISTANCES:

BUILDING: ±860' NW
 BUILDING UNIT: ±860' NW
 HIGH OCCUPANCY BUILDING UNIT: ±3460' NW
 DESIGNATED OUTSIDE ACTIVITY AREA: 5280'+
 PUBLIC ROAD: ±261' E
 PROPERTY LINE: ±275' E
 ABOVE GROUND UTILITY: ±297' E
 RAILROAD: 5280'+

NOTES:

- ▲ INDICATES SECTION CORNER
- INDICATES CALCULATED CORNER
- DRAWING LATITUDE AND LONGITUDE COORDINATES ARE NAD 83 (2011)(EPOCH:2010)
- ELEVATION BASED ON NAVD88 (GEOID12B)
- BASIS OF BEARING DERIVED FROM COLORADO COORDINATE SYSTEM OF 1983 NORTH ZONE.
- ALL MEASURED DISTANCES ARE GRID.
 COMBINED SCALE FACTOR: .99974122 CALCULATED FROM THE SW. CORNER OF SECTION 21, T6N, R66W
- OPERATOR: ROB WILSON / PDOP = 1.4
- SEE ADDENDUM TO WELL LOCATION CERTIFICATE FOR EXISTING IMPROVEMENTS WITHIN 500' OF THE WELL PAD.
- WELL FOOTAGES ARE MEASURED AT RIGHT ANGLES TO THE SECTION LINES.
- THE BOTTOM OF HOLE BEARS N89°37'11"E, 10114' FROM THE TOP OF PRODUCTION ZONE.

WELL PAD - LEFFLER 8-21

LEFFLER 1C-23-L
WELL LOCATION CERTIFICATE
 1881' FNL & 275' FEL SENE (SURFACE)
 LOCATED IN SECTION 21
 1029' FNL & 75' FWL NWNW (TOP OF PRODUCTION)
 LOCATED IN SECTION 22
 1023' FNL & 510' FEL NENE (BOTTOM)
 LOCATED IN SECTION 23
 T6N, R66W, 6TH P.M.
 WELD COUNTY, COLORADO



1625 Broadway, Suite 300
 Denver, Colorado 80202



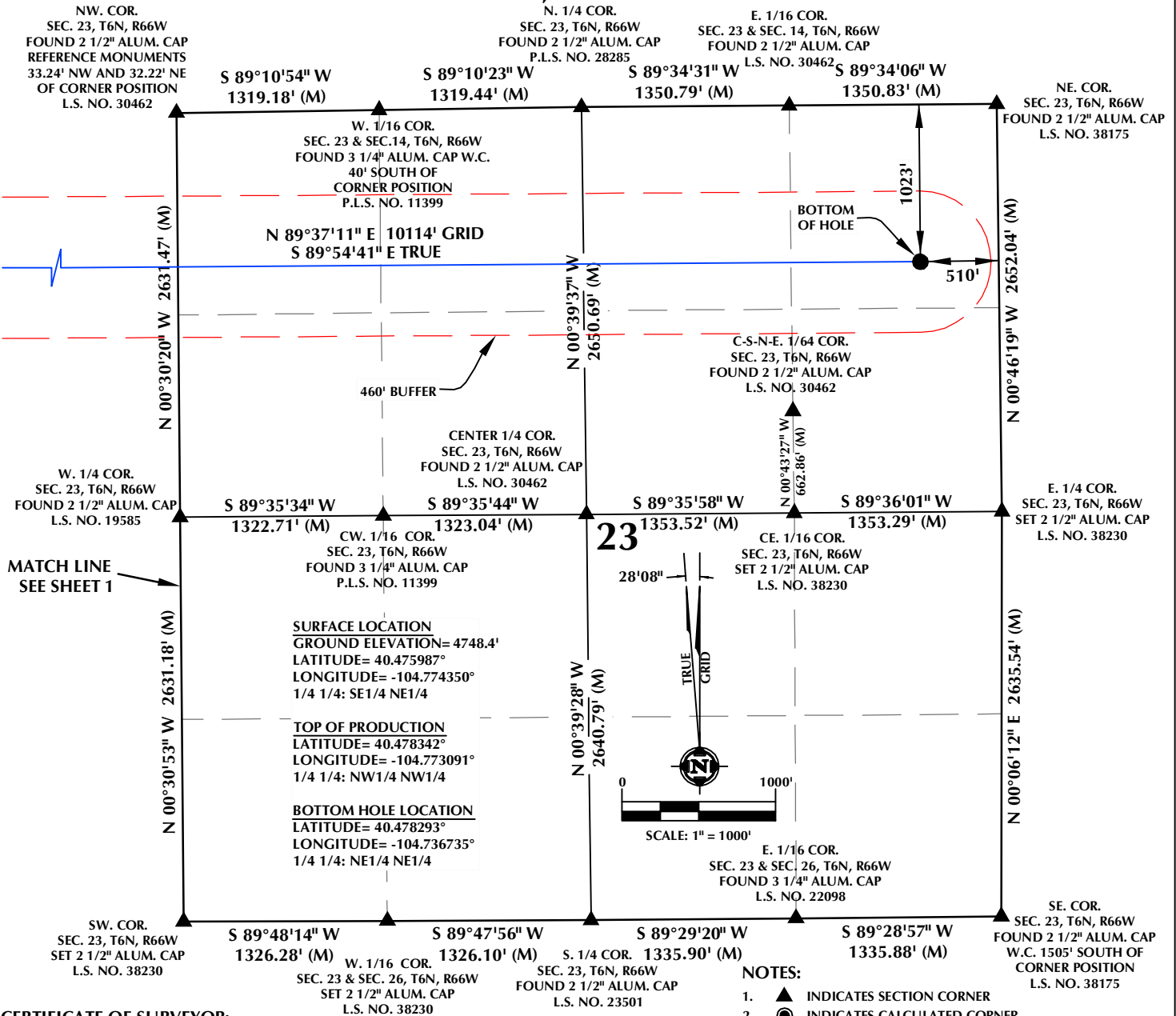
CONSULTING, LLC

SHERIDAN OFFICE
 1095 Saberton Avenue
 Sheridan, Wyoming 82801
 Phone 307-674-0609

LOVELAND OFFICE
 1635 Foxtrail Drive, Suite 204
 Loveland, Colorado 80538
 Phone 970-776-4331

DRAFTED BY:	LMO	CHECKED BY:	JRS	SHEET NO:
DATE DRAFTED:	1/10/17	DATE SURVEYED:	11/29/16	1
REVISED:		FILE NAME:	16-120	1 OF 2

T6N, R66W



CERTIFICATE OF SURVEYOR:

THIS IS TO CERTIFY THAT THE ABOVE PLAT WAS PREPARED FROM FIELD NOTES OF ACTUAL SURVEY MADE BY ME OR UNDER MY SUPERVISION AND THAT THE SAME ARE TRUE AND CORRECT TO THE BEST OF MY KNOWLEDGE AND BELIEF. THIS CERTIFICATE DOES NOT REPRESENT A LAND SURVEY PLAT OR IMPROVEMENT SURVEY PLAT AS DEFINED BY C.R.S. 38-51-302 AND CANNOT BE RELIED UPON TO DETERMINE OWNERSHIP.

JOHN R. SLAUGH
PROFESSIONAL LAND SURVEYOR
COLORADO REGISTRATION NUMBER 18230

NOTICE:
ACCORDING TO COLORADO STATE LAW YOU MUST COMMENCE ANY LEGAL ACTION BASED UPON ANY DEFECT IN THIS SURVEY WITHIN THREE YEARS AFTER YOU FIRST DISCOVER SUCH DEFECT. IN NO EVENT MAY ANY ACTION BASED UPON ANY DEFECT IN THIS SURVEY BE COMMENCED MORE THAN TEN YEARS FROM THE DATE ON THE CERTIFICATION SHOWN HEREON.

WELL DISTANCES:

BUILDING: ±860' NW
BUILDING UNIT: ±860' NW
HIGH OCCUPANCY BUILDING UNIT: ±3460' NW
DESIGNATED OUTSIDE ACTIVITY AREA: 5280'+
PUBLIC ROAD: ±261' E
PROPERTY LINE: ±275' E
ABOVE GROUND UTILITY: ±297' E
RAILROAD: 5280'+

NOTES:

- ▲ INDICATES SECTION CORNER
- INDICATES CALCULATED CORNER
- DRAWING LATITUDE AND LONGITUDE COORDINATES ARE NAD 83 (2011)(EPOCH:2010)
- ELEVATION BASED ON NAVD88 (GEOID12B)
- BASIS OF BEARING DERIVED FROM COLORADO COORDINATE SYSTEM OF 1983 NORTH ZONE.
- ALL MEASURED DISTANCES ARE GRID.
COMBINED SCALE FACTOR: .99974122 CALCULATED FROM THE SW. CORNER OF SECTION 21, T6N, R66W
- OPERATOR: ROB WILSON / PDOP = 1.4
- SEE ADDENDUM TO WELL LOCATION CERTIFICATE FOR EXISTING IMPROVEMENTS WITHIN 500' OF THE WELL PAD.
- WELL FOOTAGES ARE MEASURED AT RIGHT ANGLES TO THE SECTION LINES.
- THE BOTTOM OF HOLE BEARS N89°37'11"E, 10114' FROM THE TOP OF PRODUCTION ZONE.

WELL PAD - LEFFLER 8-21

LEFFLER 1C-23-L
WELL LOCATION CERTIFICATE
1881' FNL & 275' FEL SENE (SURFACE)
LOCATED IN SECTION 21
1029' FNL & 75' FWL NWNW (TOP OF PRODUCTION)
LOCATED IN SECTION 22
1023' FNL & 510' FEL NENE (BOTTOM)
LOCATED IN SECTION 23
T6N, R66W, 6TH P.M.
WELD COUNTY, COLORADO



1625 Broadway, Suite 300
Denver, Colorado 80202



CONSULTING, LLC

SHERIDAN OFFICE
1095 Saberton Avenue
Sheridan, Wyoming 82801
Phone 307-674-0609

LOVELAND OFFICE
1635 Foxtrail Drive, Suite 204
Loveland, Colorado 80538
Phone 970-776-4331

DRAFTED BY:	LMO	CHECKED BY:	JRS	SHEET NO:
DATE DRAFTED:	1/10/17	DATE SURVEYED:	11/29/16	2
REVISED:		FILE NAME:	16-120	2 OF 2