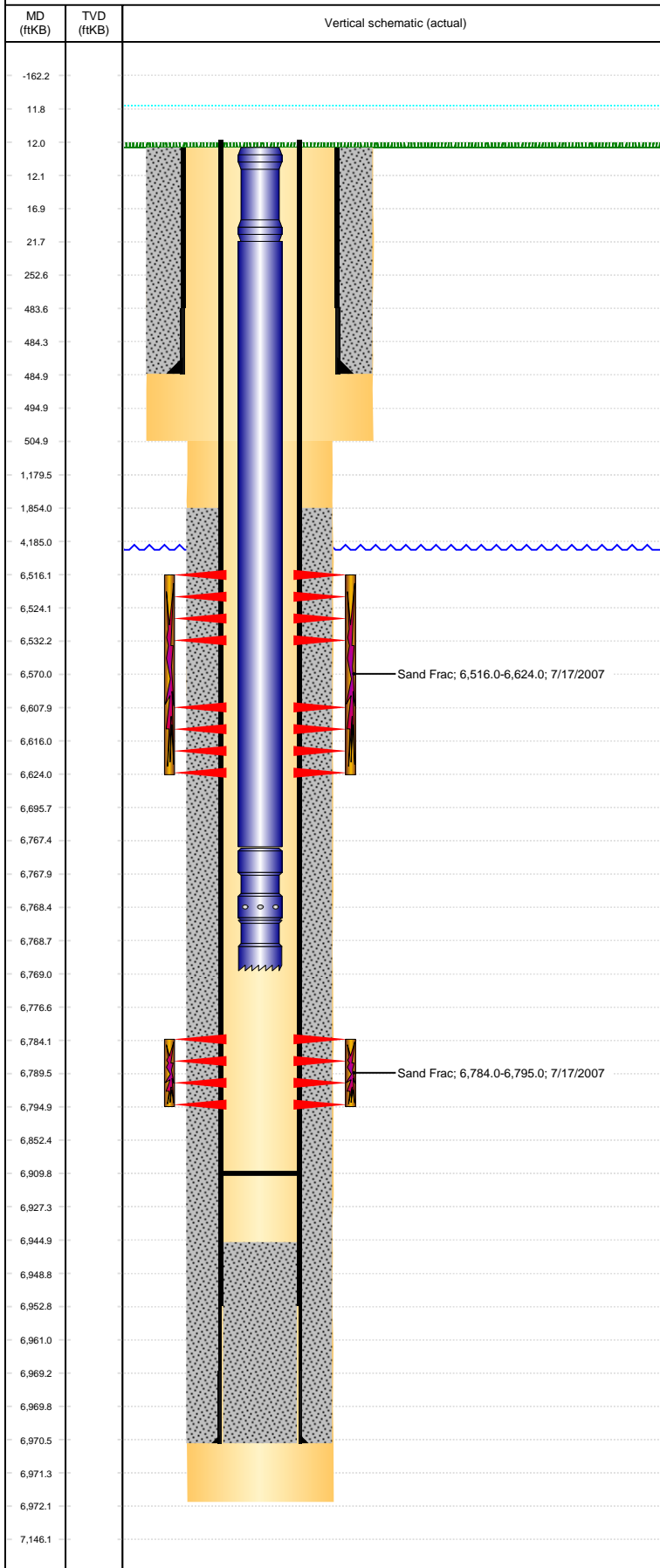


Wellbore Schematic Input Report-DJ

Well Name: WELLS RANCH USX BB 05-15

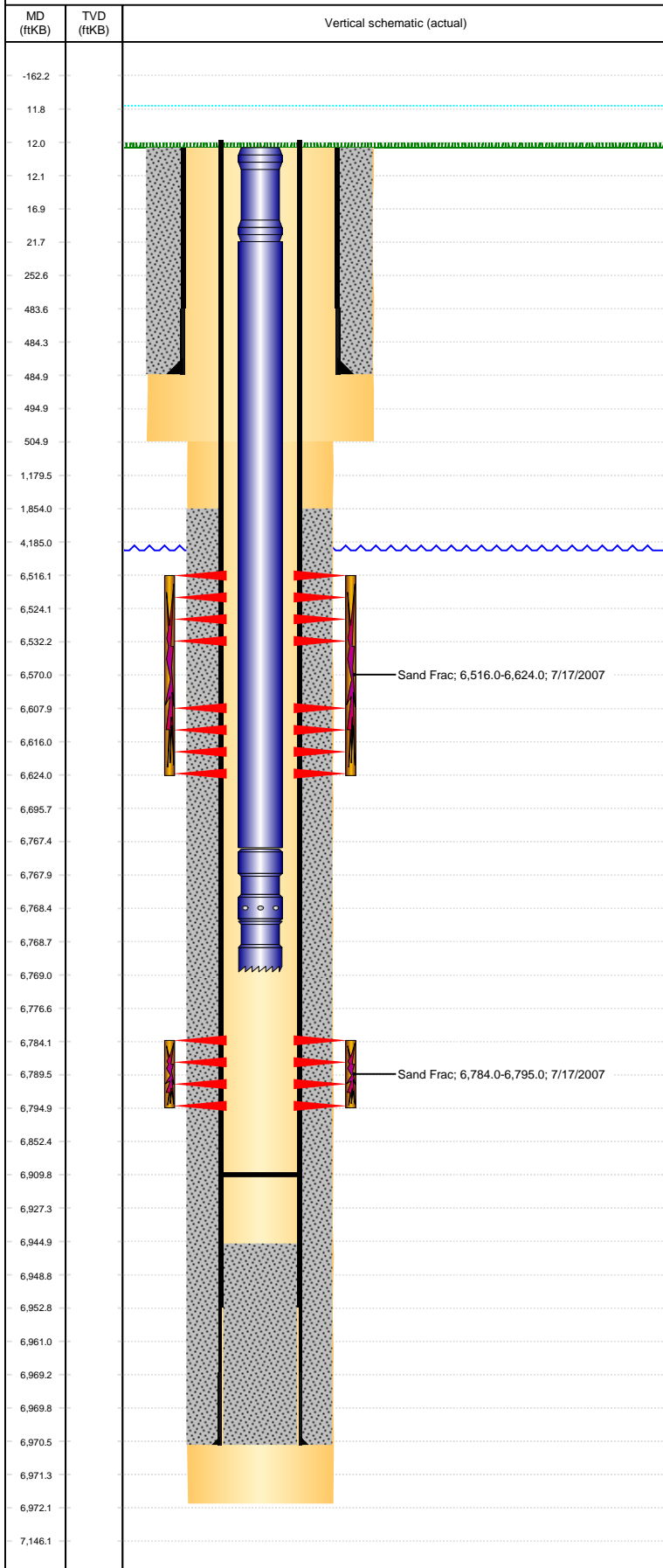
VERTICAL - ORIGINAL HOLE, 3/23/2017 2:24:33 PM



Well Header			
API 05-123-25281	Business Unit DJ BASIN	District 15	Well Config VERTICAL
Original KB Elevation (ft) 4,740	KB - GL / MSL (ftKB) 12.00	Spud Date 6/21/2007	P & A Date
Comment			
Directions To Well			
Congressional Location			
Quarter 3 SW	Quarter 4 SE	Section 5	Township 5
Twship N/S Dir N	Range 63	Range E/W Dir W	
Bottom Hole Location			
North-South Distance (ft)	From N or S Line	East-West Distance (ft)	From E or W Line
Plug Back Total Depths			
Date	Depth (ftKB)	Method	Com
6/25/2007	6,953.0	CASING TALLY	FLOAT SHOE W/COLLAR
6/28/2007	6,945.0	CASED HOLE LOG	DEPTH LOGGER ON CBL
9/20/2007	6,909.8	TAG	C/O TO 6909.8
Wellbore Sections			
Section Des	Size (in)	Act Top, MD (ftKB)	Act Btm, MD (ftKB)
SURFACE	12 1/4	12	505
PRODUCTION	7 7/8	505	6,972
Zone Statuses			
Zone Name	Status Date	Status	Fluid Type
NIOBRARA	7/20/2007	PR	
CODELL	7/20/2007	PR	
Casing Strings			
Surface, 485.0ftKB			
Casing Description	Run Date	OD (in)	Wt/Len (lb/ft)
Surface	6/22/2007	8 5/8	24.00
Grade	Top, MD (ftKB)	MD (ftKB)	
J-55	12.0	485.0	
Production, 6,970.6ftKB			
Casing Description	Run Date	OD (in)	Wt/Len (lb/ft)
Production	6/25/2007	4 1/2	11.60
Grade	Top, MD (ftKB)	MD (ftKB)	
M-80	12.0	6,970.6	
Cement			
Description	Top Depth (ftKB)	Bottom Depth (ftKB)	
SURFACE CASING CEMENT	12.0	485.0	
PRODUCTION CASING CEMENT	1,854.0	6,970.6	
Tubing Strings			
Tubing Description	Run Date	String...	ID (in)
Tubing - Production	9/21/2007	2 3/8	2.00
Wt (lb/ft)	Grade	Len (ft)	Set De...
4.70	J-55	6,757.00	
Tubing Components			
Item Des	OD (in)	Wt (lb/ft)	Grade
Pup Joint	2 3/8		J-55
EUE 8rd Tubing	2 3/8	4.70	J-55
Seal Nipple	2 3/8		J-55
Notched collar	2 3/8		J-55
Len (ft)	Btm (ftKB)	Btm (TVD) (ftKB)	
9.62	21.6		
6,745.88	6,767.5		
1.00	6,768.5		
0.50	6,769.0		
Other In Hole			
Run Date	Des	OD (in)	Top (ftKB)
Logs			
Date	Type	Top, MD (ftKB)	Btm, MD (ftKB)
6/24/2007	COMPENSATED DENSITY	2,700.0	6,952.0
6/24/2007	INDUCTION	12.0	6,972.0
6/28/2007	CBL/CCL/GR	1,730.0	6,938.0
5/7/2015	GYRO	12.0	6,700.0
Perforation Data			
Linked Zone	Bnch/St g	Sum of Entered Shot Total	Date
NIOBRARA, ORIGINAL HOLE		64	7/17/2007
NIOBRARA, ORIGINAL HOLE		64	7/17/2007
CODELL, ORIGINAL HOLE		44	7/5/2007
Total (Sum)		172	

Well Name: WELLS RANCH USX BB 05-15

VERTICAL - ORIGINAL HOLE, 3/23/2017 2:24:36 PM



Stimulation Intervals			
Interval...	Start Date	Primary Job Type	Zone
1	7/17/2007	DRILLING/COMPLETION - ORIGINAL	CODELL, ORIGINAL HOLE
Technical Result		Tech Result Details	Tech Result Note
Comment			
Interval...	Start Date	Primary Job Type	Zone
2	7/17/2007	DRILLING/COMPLETION - ORIGINAL	NIOBRARA, ORIGINAL HOLE
Technical Result		Tech Result Details	Tech Result Note
Comment			