

SYNERGY RESOURCES CORPORATION

Location: COLORADO Slot: SLOT#19 GOETZEL 33N-30B-M (2197'FSL & 2053'FWL, SEC.29)  
Field: WELD COUNTY (NAD83,TRUE NORTH) Well: GOETZEL 33N-30B-M  
Facility: SEC.29-T06N-R66W Wellbore: GOETZEL 33N-30B-M PWB

Plot reference wellpath is GOETZEL 33N-30B-M REV-A.0 PWP	Grid System: NAD83 / Lambert Colorado SP, Northern Zone (501), US feet
True vertical depths are referenced to PRECISION 562 (25) (RKB)	* = Wellpath was transformed from a different geodetic datum
Measured depths are referenced to PRECISION 562 (25) (RKB)	North Reference: True north
PRECISION 562 (25) (RKB) to Mean Sea Level: 4757 feet	Scale: True distance
Mean Sea Level to Mud line (At Slot: SLOT#19 GOETZEL 33N-30B-M (2197'FSL & 2053'FWL, SEC.29)): 0 feet	Depths are in feet
Coordinates are in feet referenced to Slot	Created by: wagnjam on 2017-02-27
	Database: WA_DEN_Denver_Deln

Location Information

Facility Name			Grid East (US ft)	Grid North (US ft)	Latitude	Longitude
SEC.29-T06N-R66W			3194449.646	1411672.008	40°27'40.817"N	104°48'04.259"W
Slot	Local N (ft)	Local E (ft)	Grid East (US ft)	Grid North (US ft)	Latitude	Longitude
SLOT#19 GOETZEL 33N-30B-M (2197'FSL & 2053'FWL, SEC.29)	-1302.42	-822.33	3193637.638	1410363.203	40°27'27.947"N	104°48'14.897"W
PRECISION 562 (25) (RKB) to Mud line (At Slot: SLOT#19 GOETZEL 33N-30B-M (2197'FSL & 2053'FWL, SEC.29))						4757ft
Mean Sea Level to Mud line (At Slot: SLOT#19 GOETZEL 33N-30B-M (2197'FSL & 2053'FWL, SEC.29))						0ft
PRECISION 562 (25) (RKB) to Mean Sea Level						4757ft

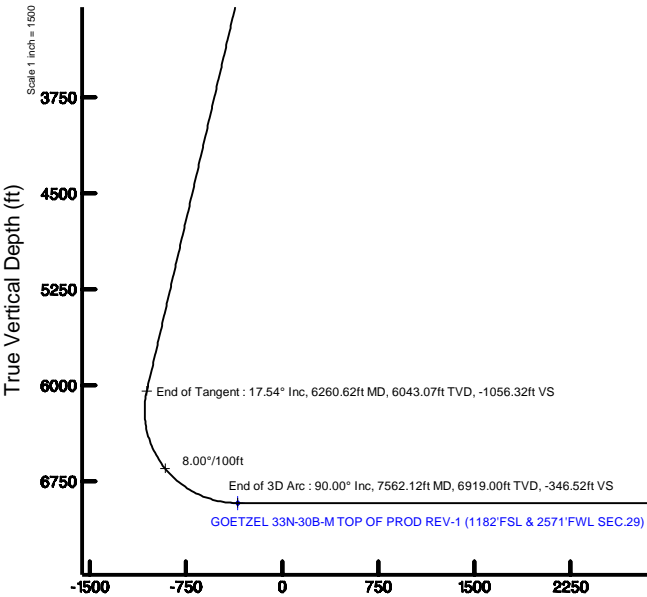
Tie-On Position

MD (ft)	Inc (°)	Az (°)	TVD (ft)	Local N (ft)	Local E (ft)	Grid East (US ft)	Grid North (US ft)	Latitude	Longitude
25.00	0.000	124.210	25.00	0.00	0.00	3193637.64	1410363.20	40°27'27.947"N	104°48'14.897"W



BGGM (1900.0 to 2018.0) Dip: 66.92° Field: 52499.6 nT  
Magnetic North is 8.43 degrees East of True North (at 2/22/2017)

To correct azimuth from Magnetic to True add 8.43 degrees



Vertical Section (ft)  
Azimuth 260.78° with reference 0.00 N, 0.00 E

Well Profile Data

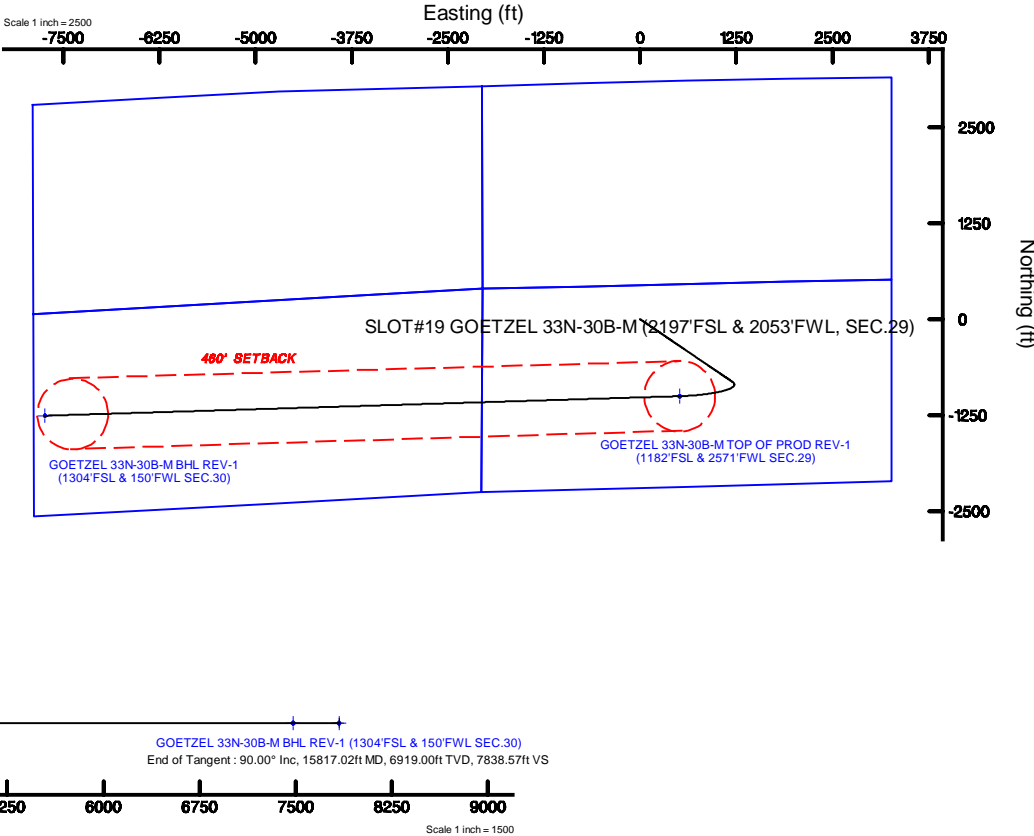
Design Comment	MD (ft)	Inc (°)	Az (°)	TVD (ft)	Local N (ft)	Local E (ft)	DLS (°/100ft)	VS (ft)
Tie On	25.00	0.000	124.210	25.00	0.00	0.00	0.00	0.00
End of Tangent	1000.00	0.000	124.210	1000.00	0.00	0.00	0.00	0.00
End of Build	1877.24	17.545	124.210	1863.60	-74.93	110.21	2.00	-96.77
End of Tangent	6260.62	17.545	124.210	6043.07	-817.85	1202.96	0.00	-1056.32
End of 3D Arc	7562.12	90.000	268.233	6919.00	-1001.88	513.75	8.00	-346.52
End of Tangent	15817.02	90.000	268.233	6919.00	-1256.42	-7737.22	0.00	7838.57

Survey Program

Start MD (ft)	End MD (ft)	Tool	Model	Log Name/Comment	Wellbore
25.00	1700.00	BHI NewTrak	Custom BHI NewTrak (Standard Rotating-Axial Corr) (Rockies 0.03Gr model)		GOETZEL 33N-30B-M PWB
1700.00	15817.02	BHI AutoTrak Curve	Custom BHI AutoTrak Curve (IFR1, Short) (Rockies 0.03Gr model)		GOETZEL 33N-30B-M PWB

Targets

Name	MD (ft)	TVD (ft)	Local N (ft)	Local E (ft)	Grid East (US ft)	Grid North (US ft)	Latitude	Longitude
SEC.29-T06N-REEV-NORTH-ERN		9.00	1302.42	822.30	3194449.66	1411671.99	40°27'40.817"N	104°48'04.259"W
SEC.29-T06N-REEV-SOUTH-ERN		9.00	1302.42	822.30	3194449.66	1411671.99	40°27'40.817"N	104°48'04.259"W
SEC.30-T06N-REEV-NORTH-ERN		9.00	1302.42	822.30	3194449.66	1411671.99	40°27'40.817"N	104°48'04.259"W
SEC.30-T06N-REEV-SOUTH-ERN		9.00	1302.42	822.30	3194449.66	1411671.99	40°27'40.817"N	104°48'04.259"W
GOETZEL 33N-30B-M-BHL ON PLAT (1304'FSL & 510'FWL SEC.30)		6919.00	-1236.46	-7377.36	3186270.49	1409068.94	40°27'15.718"N	104°48'50.329"W
GOETZEL 33N-30B-M-BHL REV-1 (1304'FSL & 150'FWL SEC.30)	15817.02	6919.00	-1256.42	-7737.22	3185910.81	1409046.15	40°27'15.507"N	104°49'54.984"W
GOETZEL 33N-30B-M TOP OF PROD REV-1 (1182'FSL & 2571'FWL SEC.29)	7562.12	6919.00	-1001.88	513.75	3194159.21	1409365.42	40°27'18.047"N	104°48'08.251"W



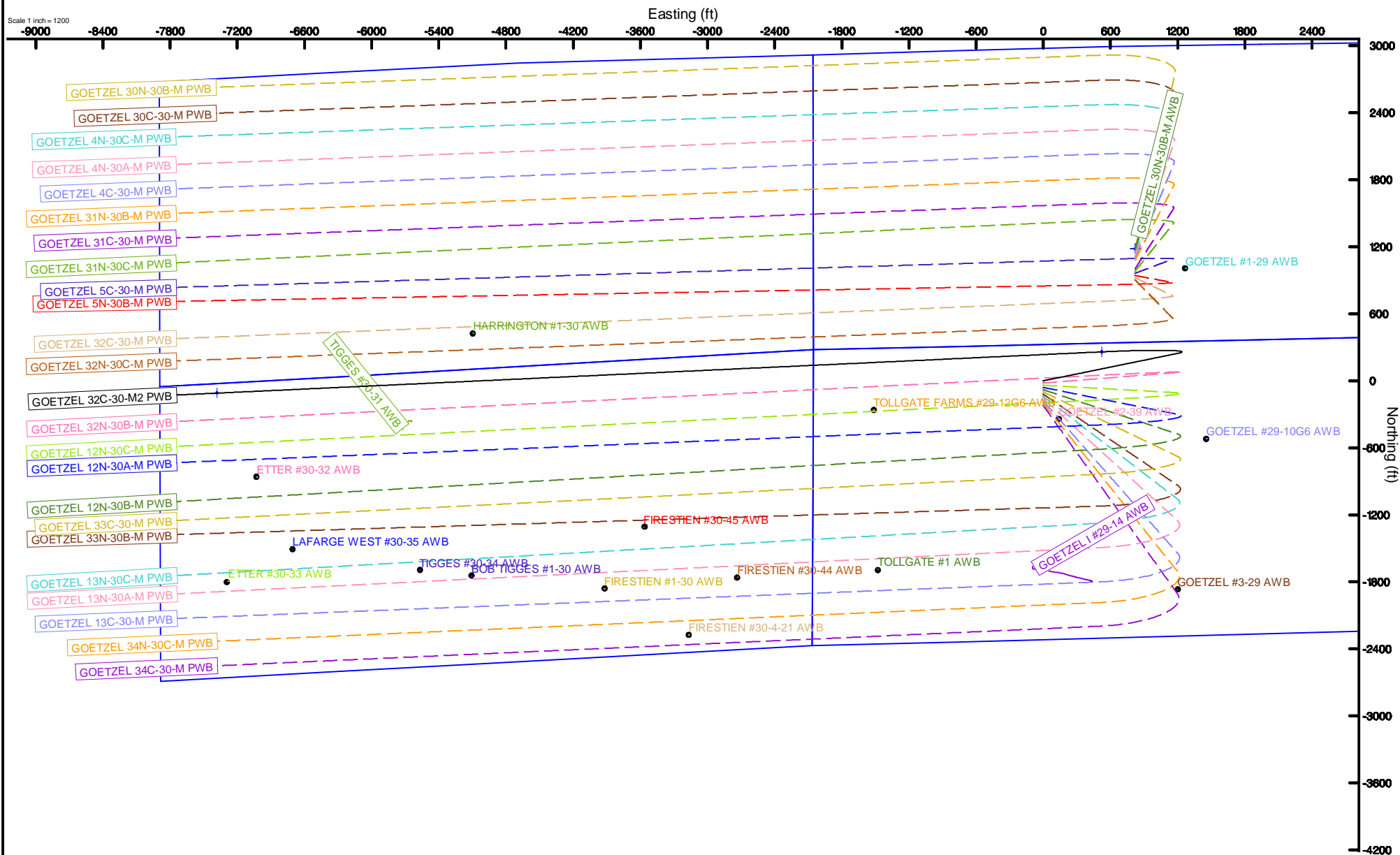
# SYNERGY RESOURCES CORPORATION

Location: COLORADO Slot: SLOT#13 GOETZEL 32C-30-M2 (2317FSL & 2053FWL SEC.29)  
Field: WELD COUNTY (NAD83, TRUE NORTH) Well: GOETZEL 32C-30-M2  
Facility: SEC.29-T06N-R66W Wellbore: GOETZEL 32C-30-M2 PWB



BGGM (1900.0 to 2018.0) Dip: 66.92° Field: 52499.6 nT  
Magnetic North is 8.43 degrees East of True North (at 2/22/2017)

To correct azimuth from Magnetic to True add 8.43 degrees



GOETZEL\_33N-30B-M\_REV-A.0\_PWP.1as

~VERSION INFORMATION

VERS. 2.0 : CWLS LOG ASCII STANDARD-VERSION 2.0

WRAP. NO : ASCII DATA SECTION CONTAINS ONE ROW PER WELLPATH STATION

~WELL INFORMATION

#MNEM	.UNITS	DATA	:DESCRIPTION
#----	.-----	----	:-----
STRT	.ft	0.00	:START MD
STOP	.ft	15817.02	:STOP MD
STEP	.ft	0.0	:STEP (non-uniform increment)
NULL	.	-999.99	:NULL
COMP	.	SYNERGY RESOURCES CORPORATION	:OPERATOR
WELL	.	GOETZEL 33N-30B-M	:WELL
FLD	.	WELD COUNTY (NAD83,TRUE NORTH)	:FIELD
LOC	.	COLORADO	:AREA (aka: Location)
CNTY	.	N/A	:COUNTY
STAT	.	N/A	:STATE
CTRY	.	N/A	:COUNTRY
SRVC	.	Baker Hughes	:CONTRACTOR
DATE	.	02/22/2017	:LOG REV DATE
API	.		:API NUMBER

~OTHER INFORMATION

#Software: wellArchitect(R) Version 5.0

#MNEM	.UNITS	DATA	:DESCRIPTION
#----	.-----	----	:-----
WPTYPE	.	PLANNED WELLPATH	:WELLPATH TYPE
FACILITY	.	SEC.29-T06N-R66W	:FACILITY
SLOT	.	SLOT#19 GOETZEL 33N-30B-M (2197'FSL & 2053'FWL, SEC.29):SLOT	:SLOT
WELLBORE	.	GOETZEL 33N-30B-M PWB	:WELLBORE
WELLPATH	.	GOETZEL 33N-30B-M REV-A.0 PWP	:WELLPATH
MDREFPT	.	PRECISION 562 (25') (RKB)	:MD REFERENCE POINT
TVDREFPT	.	PRECISION 562 (25') (RKB)	:TVD REFERENCE POINT
LCLREFPT	.	slot	:LOCAL COORDINATE REFERENCE PT
VSAZIMUTH.deg		260.78	:VERTICAL SECTION AZIMUTH
VSORIGN .ft		0.00	:VERTICAL SECTION ORIGIN NORTH
VSORIGE .ft		0.00	:VERTICAL SECTION ORIGIN EAST

~CURVE (WELLPATH) INFORMATION

#MNEM	.UNITS	:DESCRIPTION
#----	.-----	:-----
DEPT	.ft	:MEASURED DEPTH
INC	.deg	:INCLINATION
AZI	.deg	:AZIMUTH

GOETZEL\_33N-30B-M\_REV-A.0\_PWP.1as

TVD .ft :TRUE VERTICAL DEPTH  
 SECT .ft :CROSS SECTION (CURTAIN/VERTICAL)  
 LOCALN .ft :LOCAL NORTH  
 LOCALE .ft :LOCAL EAST  
 LAT .deg :LATITUDE  
 LONG .deg :LONGITUDE  
 DLS .deg/100ft :DOGLEG SEVERITY

~ASCII DATA

0.00	0.00	124.21	0.00	0.00	0.00	0.00	40.4577631	-104.8041381	0.00
25.00	0.00	124.21	25.00	0.00	0.00	0.00	40.4577631	-104.8041381	0.00
125.00	0.00	124.21	125.00	0.00	0.00	0.00	40.4577631	-104.8041381	0.00
225.00	0.00	124.21	225.00	0.00	0.00	0.00	40.4577631	-104.8041381	0.00
325.00	0.00	124.21	325.00	0.00	0.00	0.00	40.4577631	-104.8041381	0.00
425.00	0.00	124.21	425.00	0.00	0.00	0.00	40.4577631	-104.8041381	0.00
525.00	0.00	124.21	525.00	0.00	0.00	0.00	40.4577631	-104.8041381	0.00
625.00	0.00	124.21	625.00	0.00	0.00	0.00	40.4577631	-104.8041381	0.00
725.00	0.00	124.21	725.00	0.00	0.00	0.00	40.4577631	-104.8041381	0.00
825.00	0.00	124.21	825.00	0.00	0.00	0.00	40.4577631	-104.8041381	0.00
925.00	0.00	124.21	925.00	0.00	0.00	0.00	40.4577631	-104.8041381	0.00
1000.00	0.00	124.21	1000.00	0.00	0.00	0.00	40.4577631	-104.8041381	0.00
1025.00	0.50	124.21	1025.00	-0.08	-0.06	0.09	40.4577629	-104.8041377	2.00
1125.00	2.50	124.21	1124.96	-1.98	-1.53	2.25	40.4577588	-104.8041300	2.00
1225.00	4.50	124.21	1224.77	-6.41	-4.97	7.30	40.4577494	-104.8041118	2.00
1325.00	6.50	124.21	1324.30	-13.37	-10.35	15.23	40.4577346	-104.8040833	2.00
1425.00	8.50	124.21	1423.44	-22.85	-17.69	26.02	40.4577145	-104.8040445	2.00
1525.00	10.50	124.21	1522.07	-34.84	-26.97	39.67	40.4576890	-104.8039955	2.00
1625.00	12.50	124.21	1620.05	-49.31	-38.18	56.16	40.4576583	-104.8039363	2.00
1725.00	14.50	124.21	1717.29	-66.26	-51.30	75.46	40.4576222	-104.8038669	2.00
1825.00	16.50	124.21	1813.64	-85.67	-66.33	97.56	40.4575810	-104.8037875	2.00
1877.24	17.55	124.21	1863.60	-96.77	-74.93	110.21	40.4575574	-104.8037420	2.00
1925.00	17.55	124.21	1909.13	-107.23	-83.02	122.11	40.4575352	-104.8036992	0.00
2025.00	17.55	124.21	2004.48	-129.12	-99.97	147.04	40.4574886	-104.8036097	0.00
2125.00	17.55	124.21	2099.83	-151.01	-116.92	171.97	40.4574421	-104.8035201	0.00
2225.00	17.55	124.21	2195.18	-172.90	-133.87	196.90	40.4573956	-104.8034305	0.00
2325.00	17.55	124.21	2290.53	-194.79	-150.82	221.83	40.4573491	-104.8033409	0.00
2425.00	17.55	124.21	2385.87	-216.68	-167.76	246.76	40.4573026	-104.8032513	0.00
2525.00	17.55	124.21	2481.22	-238.57	-184.71	271.69	40.4572560	-104.8031618	0.00
2625.00	17.55	124.21	2576.57	-260.46	-201.66	296.62	40.4572095	-104.8030722	0.00
2725.00	17.55	124.21	2671.92	-282.35	-218.61	321.55	40.4571630	-104.8029826	0.00
2825.00	17.55	124.21	2767.27	-304.24	-235.56	346.48	40.4571165	-104.8028930	0.00
2925.00	17.55	124.21	2862.61	-326.13	-252.51	371.41	40.4570699	-104.8028034	0.00
3025.00	17.55	124.21	2957.96	-348.02	-269.46	396.34	40.4570234	-104.8027138	0.00
3125.00	17.55	124.21	3053.31	-369.91	-286.41	421.27	40.4569769	-104.8026243	0.00

GOETZEL\_33N-30B-M\_REV-A.0\_PWP.1as

3225.00	17.55	124.21	3148.66	-391.80	-303.35	446.20	40.4569304	-104.8025347	0.00
3325.00	17.55	124.21	3244.01	-413.69	-320.30	471.13	40.4568839	-104.8024451	0.00
3425.00	17.55	124.21	3339.35	-435.58	-337.25	496.06	40.4568373	-104.8023555	0.00
3525.00	17.55	124.21	3434.70	-457.48	-354.20	520.99	40.4567908	-104.8022659	0.00
3625.00	17.55	124.21	3530.05	-479.37	-371.15	545.91	40.4567443	-104.8021764	0.00
3725.00	17.55	124.21	3625.40	-501.26	-388.10	570.84	40.4566978	-104.8020868	0.00
3825.00	17.55	124.21	3720.75	-523.15	-405.05	595.77	40.4566512	-104.8019972	0.00
3925.00	17.55	124.21	3816.10	-545.04	-422.00	620.70	40.4566047	-104.8019076	0.00
4025.00	17.55	124.21	3911.44	-566.93	-438.94	645.63	40.4565582	-104.8018180	0.00
4125.00	17.55	124.21	4006.79	-588.82	-455.89	670.56	40.4565117	-104.8017285	0.00
4225.00	17.55	124.21	4102.14	-610.71	-472.84	695.49	40.4564651	-104.8016389	0.00
4325.00	17.55	124.21	4197.49	-632.60	-489.79	720.42	40.4564186	-104.8015493	0.00
4425.00	17.55	124.21	4292.84	-654.49	-506.74	745.35	40.4563721	-104.8014597	0.00
4525.00	17.55	124.21	4388.18	-676.38	-523.69	770.28	40.4563256	-104.8013701	0.00
4625.00	17.55	124.21	4483.53	-698.27	-540.64	795.21	40.4562790	-104.8012806	0.00
4725.00	17.55	124.21	4578.88	-720.16	-557.59	820.14	40.4562325	-104.8011910	0.00
4825.00	17.55	124.21	4674.23	-742.05	-574.53	845.07	40.4561860	-104.8011014	0.00
4925.00	17.55	124.21	4769.58	-763.94	-591.48	870.00	40.4561395	-104.8010118	0.00
5025.00	17.55	124.21	4864.92	-785.83	-608.43	894.93	40.4560929	-104.8009223	0.00
5125.00	17.55	124.21	4960.27	-807.72	-625.38	919.86	40.4560464	-104.8008327	0.00
5225.00	17.55	124.21	5055.62	-829.61	-642.33	944.79	40.4559999	-104.8007431	0.00
5325.00	17.55	124.21	5150.97	-851.50	-659.28	969.72	40.4559534	-104.8006535	0.00
5425.00	17.55	124.21	5246.32	-873.39	-676.23	994.64	40.4559068	-104.8005639	0.00
5525.00	17.55	124.21	5341.67	-895.28	-693.17	1019.57	40.4558603	-104.8004744	0.00
5625.00	17.55	124.21	5437.01	-917.17	-710.12	1044.50	40.4558138	-104.8003848	0.00
5725.00	17.55	124.21	5532.36	-939.07	-727.07	1069.43	40.4557673	-104.8002952	0.00
5825.00	17.55	124.21	5627.71	-960.96	-744.02	1094.36	40.4557207	-104.8002056	0.00
5925.00	17.55	124.21	5723.06	-982.85	-760.97	1119.29	40.4556742	-104.8001161	0.00
6025.00	17.55	124.21	5818.41	-1004.74	-777.92	1144.22	40.4556277	-104.8000265	0.00
6125.00	17.55	124.21	5913.75	-1026.63	-794.87	1169.15	40.4555812	-104.7999369	0.00
6225.00	17.55	124.21	6009.10	-1048.52	-811.82	1194.08	40.4555346	-104.7998473	0.00
6260.62	17.55	124.21	6043.07	-1056.32	-817.85	1202.96	40.4555181	-104.7998154	0.00
6325.00	13.79	137.39	6105.06	-1067.59	-828.96	1216.19	40.4554876	-104.7997679	8.00
6425.00	10.57	172.94	6202.93	-1073.82	-846.87	1225.40	40.4554384	-104.7997348	8.00
6525.00	12.63	212.27	6301.03	-1066.21	-865.24	1220.68	40.4553880	-104.7997517	8.00
6625.00	18.28	234.02	6397.46	-1044.93	-883.73	1202.13	40.4553372	-104.7998184	8.00
6725.00	25.20	244.99	6490.33	-1010.39	-901.98	1170.09	40.4552872	-104.7999335	8.00
6825.00	32.60	251.35	6577.83	-963.25	-919.62	1125.21	40.4552387	-104.8000948	8.00
6925.00	40.20	255.54	6658.28	-904.45	-936.33	1068.34	40.4551929	-104.8002992	8.00
7025.00	47.92	258.58	6730.09	-835.11	-951.76	1000.60	40.4551505	-104.8005426	8.00
7125.00	55.70	260.96	6791.87	-756.59	-965.62	923.31	40.4551125	-104.8008203	8.00
7225.00	63.52	262.92	6842.42	-670.42	-977.65	837.96	40.4550795	-104.8011270	8.00
7325.00	71.36	264.64	6880.76	-578.28	-987.60	746.23	40.4550522	-104.8014566	8.00
7425.00	79.22	266.21	6906.13	-481.96	-995.29	649.89	40.4550311	-104.8018028	8.00

GOETZEL_33N-30B-M_REV-A.0_PWP.1as									
7525.00	87.08	267.69	6918.05	-383.33	-1000.56	550.83	40.4550166	-104.8021588	8.00
7562.12	90.00	268.23	6919.00	-346.52	-1001.88	513.75	40.4550130	-104.8022920	8.00
7625.00	90.00	268.23	6919.00	-284.17	-1003.82	450.90	40.4550077	-104.8025178	0.00
7725.00	90.00	268.23	6919.00	-185.01	-1006.91	350.94	40.4549992	-104.8028770	0.00
7825.00	90.00	268.23	6919.00	-85.86	-1009.99	250.99	40.4549908	-104.8032362	0.00
7925.00	90.00	268.23	6919.00	13.30	-1013.07	151.04	40.4549823	-104.8035953	0.00
8025.00	90.00	268.23	6919.00	112.45	-1016.16	51.09	40.4549738	-104.8039545	0.00
8125.00	90.00	268.23	6919.00	211.60	-1019.24	-48.86	40.4549654	-104.8043136	0.00
8225.00	90.00	268.23	6919.00	310.76	-1022.32	-148.82	40.4549569	-104.8046728	0.00
8325.00	90.00	268.23	6919.00	409.91	-1025.41	-248.77	40.4549484	-104.8050320	0.00
8425.00	90.00	268.23	6919.00	509.07	-1028.49	-348.72	40.4549400	-104.8053911	0.00
8525.00	90.00	268.23	6919.00	608.22	-1031.57	-448.67	40.4549315	-104.8057503	0.00
8625.00	90.00	268.23	6919.00	707.38	-1034.66	-548.63	40.4549230	-104.8061094	0.00
8725.00	90.00	268.23	6919.00	806.53	-1037.74	-648.58	40.4549146	-104.8064686	0.00
8825.00	90.00	268.23	6919.00	905.68	-1040.82	-748.53	40.4549061	-104.8068278	0.00
8925.00	90.00	268.23	6919.00	1004.84	-1043.91	-848.48	40.4548976	-104.8071869	0.00
9025.00	90.00	268.23	6919.00	1103.99	-1046.99	-948.44	40.4548891	-104.8075461	0.00
9125.00	90.00	268.23	6919.00	1203.15	-1050.07	-1048.39	40.4548807	-104.8079052	0.00
9225.00	90.00	268.23	6919.00	1302.30	-1053.16	-1148.34	40.4548722	-104.8082644	0.00
9325.00	90.00	268.23	6919.00	1401.46	-1056.24	-1248.29	40.4548637	-104.8086236	0.00
9425.00	90.00	268.23	6919.00	1500.61	-1059.33	-1348.25	40.4548552	-104.8089827	0.00
9525.00	90.00	268.23	6919.00	1599.77	-1062.41	-1448.20	40.4548468	-104.8093419	0.00
9625.00	90.00	268.23	6919.00	1698.92	-1065.49	-1548.15	40.4548383	-104.8097010	0.00
9725.00	90.00	268.23	6919.00	1798.07	-1068.58	-1648.10	40.4548298	-104.8100602	0.00
9825.00	90.00	268.23	6919.00	1897.23	-1071.66	-1748.06	40.4548213	-104.8104193	0.00
9925.00	90.00	268.23	6919.00	1996.38	-1074.74	-1848.01	40.4548128	-104.8107785	0.00
10025.00	90.00	268.23	6919.00	2095.54	-1077.83	-1947.96	40.4548043	-104.8111377	0.00
10125.00	90.00	268.23	6919.00	2194.69	-1080.91	-2047.91	40.4547959	-104.8114968	0.00
10225.00	90.00	268.23	6919.00	2293.85	-1083.99	-2147.87	40.4547874	-104.8118560	0.00
10325.00	90.00	268.23	6919.00	2393.00	-1087.08	-2247.82	40.4547789	-104.8122151	0.00
10425.00	90.00	268.23	6919.00	2492.15	-1090.16	-2347.77	40.4547704	-104.8125743	0.00
10525.00	90.00	268.23	6919.00	2591.31	-1093.24	-2447.72	40.4547619	-104.8129334	0.00
10625.00	90.00	268.23	6919.00	2690.46	-1096.33	-2547.68	40.4547534	-104.8132926	0.00
10725.00	90.00	268.23	6919.00	2789.62	-1099.41	-2647.63	40.4547449	-104.8136518	0.00
10825.00	90.00	268.23	6919.00	2888.77	-1102.49	-2747.58	40.4547364	-104.8140109	0.00
10925.00	90.00	268.23	6919.00	2987.93	-1105.58	-2847.53	40.4547279	-104.8143701	0.00
11025.00	90.00	268.23	6919.00	3087.08	-1108.66	-2947.49	40.4547194	-104.8147292	0.00
11125.00	90.00	268.23	6919.00	3186.23	-1111.75	-3047.44	40.4547109	-104.8150884	0.00
11225.00	90.00	268.23	6919.00	3285.39	-1114.83	-3147.39	40.4547024	-104.8154475	0.00
11325.00	90.00	268.23	6919.00	3384.54	-1117.91	-3247.34	40.4546939	-104.8158067	0.00
11425.00	90.00	268.23	6919.00	3483.70	-1121.00	-3347.30	40.4546854	-104.8161659	0.00
11525.00	90.00	268.23	6919.00	3582.85	-1124.08	-3447.25	40.4546769	-104.8165250	0.00
11625.00	90.00	268.23	6919.00	3682.01	-1127.16	-3547.20	40.4546684	-104.8168842	0.00
11725.00	90.00	268.23	6919.00	3781.16	-1130.25	-3647.15	40.4546599	-104.8172433	0.00

GOETZEL_33N-30B-M_REV-A.0_PWP.1as									
11825.00	90.00	268.23	6919.00	3880.32	-1133.33	-3747.11	40.4546514	-104.8176025	0.00
11925.00	90.00	268.23	6919.00	3979.47	-1136.41	-3847.06	40.4546429	-104.8179616	0.00
12025.00	90.00	268.23	6919.00	4078.62	-1139.50	-3947.01	40.4546344	-104.8183208	0.00
12125.00	90.00	268.23	6919.00	4177.78	-1142.58	-4046.96	40.4546259	-104.8186800	0.00
12225.00	90.00	268.23	6919.00	4276.93	-1145.66	-4146.92	40.4546174	-104.8190391	0.00
12325.00	90.00	268.23	6919.00	4376.09	-1148.75	-4246.87	40.4546089	-104.8193983	0.00
12425.00	90.00	268.23	6919.00	4475.24	-1151.83	-4346.82	40.4546004	-104.8197574	0.00
12525.00	90.00	268.23	6919.00	4574.40	-1154.91	-4446.77	40.4545919	-104.8201166	0.00
12625.00	90.00	268.23	6919.00	4673.55	-1158.00	-4546.73	40.4545833	-104.8204757	0.00
12725.00	90.00	268.23	6919.00	4772.70	-1161.08	-4646.68	40.4545748	-104.8208349	0.00
12825.00	90.00	268.23	6919.00	4871.86	-1164.17	-4746.63	40.4545663	-104.8211940	0.00
12925.00	90.00	268.23	6919.00	4971.01	-1167.25	-4846.58	40.4545578	-104.8215532	0.00
13025.00	90.00	268.23	6919.00	5070.17	-1170.33	-4946.53	40.4545493	-104.8219124	0.00
13125.00	90.00	268.23	6919.00	5169.32	-1173.42	-5046.49	40.4545408	-104.8222715	0.00
13225.00	90.00	268.23	6919.00	5268.48	-1176.50	-5146.44	40.4545322	-104.8226307	0.00
13325.00	90.00	268.23	6919.00	5367.63	-1179.58	-5246.39	40.4545237	-104.8229898	0.00
13425.00	90.00	268.23	6919.00	5466.78	-1182.67	-5346.34	40.4545152	-104.8233490	0.00
13525.00	90.00	268.23	6919.00	5565.94	-1185.75	-5446.30	40.4545067	-104.8237081	0.00
13625.00	90.00	268.23	6919.00	5665.09	-1188.83	-5546.25	40.4544981	-104.8240673	0.00
13725.00	90.00	268.23	6919.00	5764.25	-1191.92	-5646.20	40.4544896	-104.8244264	0.00
13825.00	90.00	268.23	6919.00	5863.40	-1195.00	-5746.15	40.4544811	-104.8247856	0.00
13925.00	90.00	268.23	6919.00	5962.56	-1198.08	-5846.11	40.4544726	-104.8251448	0.00
14025.00	90.00	268.23	6919.00	6061.71	-1201.17	-5946.06	40.4544640	-104.8255039	0.00
14125.00	90.00	268.23	6919.00	6160.87	-1204.25	-6046.01	40.4544555	-104.8258631	0.00
14225.00	90.00	268.23	6919.00	6260.02	-1207.33	-6145.96	40.4544470	-104.8262222	0.00
14325.00	90.00	268.23	6919.00	6359.17	-1210.42	-6245.92	40.4544384	-104.8265814	0.00
14425.00	90.00	268.23	6919.00	6458.33	-1213.50	-6345.87	40.4544299	-104.8269405	0.00
14525.00	90.00	268.23	6919.00	6557.48	-1216.59	-6445.82	40.4544214	-104.8272997	0.00
14625.00	90.00	268.23	6919.00	6656.64	-1219.67	-6545.77	40.4544128	-104.8276588	0.00
14725.00	90.00	268.23	6919.00	6755.79	-1222.75	-6645.73	40.4544043	-104.8280180	0.00
14825.00	90.00	268.23	6919.00	6854.95	-1225.84	-6745.68	40.4543958	-104.8283771	0.00
14925.00	90.00	268.23	6919.00	6954.10	-1228.92	-6845.63	40.4543872	-104.8287363	0.00
15025.00	90.00	268.23	6919.00	7053.25	-1232.00	-6945.58	40.4543787	-104.8290954	0.00
15125.00	90.00	268.23	6919.00	7152.41	-1235.09	-7045.54	40.4543701	-104.8294546	0.00
15225.00	90.00	268.23	6919.00	7251.56	-1238.17	-7145.49	40.4543616	-104.8298138	0.00
15325.00	90.00	268.23	6919.00	7350.72	-1241.25	-7245.44	40.4543531	-104.8301729	0.00
15425.00	90.00	268.23	6919.00	7449.87	-1244.34	-7345.39	40.4543445	-104.8305321	0.00
15525.00	90.00	268.23	6919.00	7549.03	-1247.42	-7445.35	40.4543360	-104.8308912	0.00
15625.00	90.00	268.23	6919.00	7648.18	-1250.50	-7545.30	40.4543274	-104.8312504	0.00
15725.00	90.00	268.23	6919.00	7747.34	-1253.59	-7645.25	40.4543189	-104.8316095	0.00
15817.02	90.00	268.23	6919.00	7838.57	-1256.42	-7737.22	40.4543110	-104.8319400	0.00



# Planned Wellpath Report

GOETZEL 33N-30B-M REV-A.0 PWP

Page 1 of 8



## REFERENCE WELLPATH IDENTIFICATION

Operator	SYNERGY RESOURCES CORPORATION	Slot	SLOT#19 GOETZEL 33N-30B-M (2197'FSL & 2053'FWL, SEC.29)
Area	COLORADO	Well	GOETZEL 33N-30B-M
Field	WELD COUNTY (NAD83,TRUE NORTH)	Wellbore	GOETZEL 33N-30B-M PWB
Facility	SEC.29-T06N-R66W		

## REPORT SETUP INFORMATION

Projection System	NAD83 / Lambert Colorado SP, Northern Zone (501), US feet	Software System	WellArchitect® 5.0
North Reference	True	User	Wagnjam
Scale	0.999963	Report Generated	2/27/2017 at 5:53:22 PM
Convergence at slot	0.45° East	Database/Source file	WA_DEN_Denver_Defn/GOETZEL_33N-30B-M_REV-A.0_PWP.xml

## WELLPATH LOCATION

	Local coordinates		Grid coordinates		Geographic coordinates	
	North[ft]	East[ft]	Easting[US ft]	Northing[US ft]	Latitude	Longitude
Slot Location	-1302.42	-822.33	3193637.64	1410363.20	40°27'27.947"N	104°48'14.897"W
Facility Reference Pt			3194449.65	1411672.01	40°27'40.817"N	104°48'04.259"W
Field Reference Pt			3171284.48	1426358.81	40°30'07.643"N	104°53'02.634"W

## WELLPATH DATUM

Calculation method	Minimum curvature	PRECISION 562 (25') (RKB) to Facility Vertical Datum	4757.00ft
Horizontal Reference Pt	Slot	PRECISION 562 (25') (RKB) to Mean Sea Level	4757.00ft
Vertical Reference Pt	PRECISION 562 (25') (RKB)	PRECISION 562 (25') (RKB) to Mud Line at Slot (SLOT#19 GOETZEL 33N-30B-M (2197'FSL & 2053'FWL, SEC.29))	4757.00ft
MD Reference Pt	PRECISION 562 (25') (RKB)	Section Origin	N 0.00, E 0.00 ft
Field Vertical Reference	Mean Sea Level	Section Azimuth	260.78°



# Planned Wellpath Report

GOETZEL 33N-30B-M REV-A.0 PWP

Page 2 of 8



## REFERENCE WELLPATH IDENTIFICATION

Operator	SYNERGY RESOURCES CORPORATION	Slot	SLOT#19 GOETZEL 33N-30B-M (2197'FSL & 2053'FWL, SEC.29)
Area	COLORADO	Well	GOETZEL 33N-30B-M
Field	WELD COUNTY (NAD83,TRUE NORTH)	Wellbore	GOETZEL 33N-30B-M PWB
Facility	SEC.29-T06N-R66W		

## WELLPATH DATA (164 stations) † = interpolated/extrapolated station

MD [ft]	Inclination [°]	Azimuth [°]	TVD [ft]	Vert Sect [ft]	North [ft]	East [ft]	DLS [°/100ft]	Comments
0.00†	0.000	124.210	0.00	0.00	0.00	0.00	0.00	
25.00	0.000	124.210	25.00	0.00	0.00	0.00	0.00	Tie On
125.00†	0.000	124.210	125.00	0.00	0.00	0.00	0.00	
225.00†	0.000	124.210	225.00	0.00	0.00	0.00	0.00	
325.00†	0.000	124.210	325.00	0.00	0.00	0.00	0.00	
425.00†	0.000	124.210	425.00	0.00	0.00	0.00	0.00	
525.00†	0.000	124.210	525.00	0.00	0.00	0.00	0.00	
625.00†	0.000	124.210	625.00	0.00	0.00	0.00	0.00	
725.00†	0.000	124.210	725.00	0.00	0.00	0.00	0.00	
825.00†	0.000	124.210	825.00	0.00	0.00	0.00	0.00	
925.00†	0.000	124.210	925.00	0.00	0.00	0.00	0.00	
1000.00	0.000	124.210	1000.00	0.00	0.00	0.00	0.00	End of Tangent
1025.00†	0.500	124.210	1025.00	-0.08	-0.06	0.09	2.00	
1125.00†	2.500	124.210	1124.96	-1.98	-1.53	2.25	2.00	
1225.00†	4.500	124.210	1224.77	-6.41	-4.97	7.30	2.00	
1325.00†	6.500	124.210	1324.30	-13.37	-10.35	15.23	2.00	
1425.00†	8.500	124.210	1423.44	-22.85	-17.69	26.02	2.00	
1525.00†	10.500	124.210	1522.07	-34.84	-26.97	39.67	2.00	
1625.00†	12.500	124.210	1620.05	-49.31	-38.18	56.16	2.00	
1725.00†	14.500	124.210	1717.29	-66.26	-51.30	75.46	2.00	
1825.00†	16.500	124.210	1813.64	-85.67	-66.33	97.56	2.00	
1877.24	17.545	124.210	1863.60	-96.77	-74.93	110.21	2.00	End of Build
1925.00†	17.545	124.210	1909.13	-107.23	-83.02	122.11	0.00	
2025.00†	17.545	124.210	2004.48	-129.12	-99.97	147.04	0.00	
2125.00†	17.545	124.210	2099.83	-151.01	-116.92	171.97	0.00	
2225.00†	17.545	124.210	2195.18	-172.90	-133.87	196.90	0.00	
2325.00†	17.545	124.210	2290.53	-194.79	-150.82	221.83	0.00	
2425.00†	17.545	124.210	2385.87	-216.68	-167.76	246.76	0.00	
2525.00†	17.545	124.210	2481.22	-238.57	-184.71	271.69	0.00	
2625.00†	17.545	124.210	2576.57	-260.46	-201.66	296.62	0.00	



# Planned Wellpath Report

GOETZEL 33N-30B-M REV-A.0 PWP

Page 3 of 8



## REFERENCE WELLPATH IDENTIFICATION

Operator	SYNERGY RESOURCES CORPORATION	Slot	SLOT#19 GOETZEL 33N-30B-M (2197'FSL & 2053'FWL, SEC.29)
Area	COLORADO	Well	GOETZEL 33N-30B-M
Field	WELD COUNTY (NAD83,TRUE NORTH)	Wellbore	GOETZEL 33N-30B-M PWB
Facility	SEC.29-T06N-R66W		

## WELLPATH DATA (164 stations) † = interpolated/extrapolated station

MD [ft]	Inclination [°]	Azimuth [°]	TVD [ft]	Vert Sect [ft]	North [ft]	East [ft]	DLS [°/100ft]	Comments
2725.00†	17.545	124.210	2671.92	-282.35	-218.61	321.55	0.00	
2825.00†	17.545	124.210	2767.27	-304.24	-235.56	346.48	0.00	
2925.00†	17.545	124.210	2862.61	-326.13	-252.51	371.41	0.00	
3025.00†	17.545	124.210	2957.96	-348.02	-269.46	396.34	0.00	
3125.00†	17.545	124.210	3053.31	-369.91	-286.41	421.27	0.00	
3225.00†	17.545	124.210	3148.66	-391.80	-303.35	446.20	0.00	
3325.00†	17.545	124.210	3244.01	-413.69	-320.30	471.13	0.00	
3425.00†	17.545	124.210	3339.35	-435.58	-337.25	496.06	0.00	
3525.00†	17.545	124.210	3434.70	-457.48	-354.20	520.99	0.00	
3625.00†	17.545	124.210	3530.05	-479.37	-371.15	545.91	0.00	
3725.00†	17.545	124.210	3625.40	-501.26	-388.10	570.84	0.00	
3825.00†	17.545	124.210	3720.75	-523.15	-405.05	595.77	0.00	
3925.00†	17.545	124.210	3816.10	-545.04	-422.00	620.70	0.00	
4025.00†	17.545	124.210	3911.44	-566.93	-438.94	645.63	0.00	
4125.00†	17.545	124.210	4006.79	-588.82	-455.89	670.56	0.00	
4225.00†	17.545	124.210	4102.14	-610.71	-472.84	695.49	0.00	
4325.00†	17.545	124.210	4197.49	-632.60	-489.79	720.42	0.00	
4425.00†	17.545	124.210	4292.84	-654.49	-506.74	745.35	0.00	
4525.00†	17.545	124.210	4388.18	-676.38	-523.69	770.28	0.00	
4625.00†	17.545	124.210	4483.53	-698.27	-540.64	795.21	0.00	
4725.00†	17.545	124.210	4578.88	-720.16	-557.59	820.14	0.00	
4825.00†	17.545	124.210	4674.23	-742.05	-574.53	845.07	0.00	
4925.00†	17.545	124.210	4769.58	-763.94	-591.48	870.00	0.00	
5025.00†	17.545	124.210	4864.92	-785.83	-608.43	894.93	0.00	
5125.00†	17.545	124.210	4960.27	-807.72	-625.38	919.86	0.00	
5225.00†	17.545	124.210	5055.62	-829.61	-642.33	944.79	0.00	
5325.00†	17.545	124.210	5150.97	-851.50	-659.28	969.72	0.00	
5425.00†	17.545	124.210	5246.32	-873.39	-676.23	994.64	0.00	
5525.00†	17.545	124.210	5341.67	-895.28	-693.17	1019.57	0.00	
5625.00†	17.545	124.210	5437.01	-917.17	-710.12	1044.50	0.00	



# Planned Wellpath Report

GOETZEL 33N-30B-M REV-A.0 PWP

Page 4 of 8



## REFERENCE WELLPATH IDENTIFICATION

Operator	SYNERGY RESOURCES CORPORATION	Slot	SLOT#19 GOETZEL 33N-30B-M (2197'FSL & 2053'FWL, SEC.29)
Area	COLORADO	Well	GOETZEL 33N-30B-M
Field	WELD COUNTY (NAD83,TRUE NORTH)	Wellbore	GOETZEL 33N-30B-M PWB
Facility	SEC.29-T06N-R66W		

## WELLPATH DATA (164 stations) † = interpolated/extrapolated station

MD [ft]	Inclination [°]	Azimuth [°]	TVD [ft]	Vert Sect [ft]	North [ft]	East [ft]	DLS [°/100ft]	Comments
5725.00†	17.545	124.210	5532.36	-939.07	-727.07	1069.43	0.00	
5825.00†	17.545	124.210	5627.71	-960.96	-744.02	1094.36	0.00	
5925.00†	17.545	124.210	5723.06	-982.85	-760.97	1119.29	0.00	
6025.00†	17.545	124.210	5818.41	-1004.74	-777.92	1144.22	0.00	
6125.00†	17.545	124.210	5913.75	-1026.63	-794.87	1169.15	0.00	
6225.00†	17.545	124.210	6009.10	-1048.52	-811.82	1194.08	0.00	
6260.62	17.545	124.210	6043.07	-1056.32	-817.85	1202.96	0.00	End of Tangent
6325.00†	13.793	137.394	6105.06	-1067.59	-828.96	1216.19	8.00	
6425.00†	10.566	172.938	6202.93	-1073.82	-846.87	1225.40	8.00	
6525.00†	12.632	212.266	6301.03	-1066.21	-865.24	1220.68	8.00	
6625.00†	18.278	234.015	6397.46	-1044.93	-883.73	1202.13	8.00	
6725.00†	25.201	244.986	6490.33	-1010.39	-901.98	1170.09	8.00	
6825.00†	32.597	251.347	6577.83	-963.25	-919.62	1125.21	8.00	
6925.00†	40.204	255.538	6658.28	-904.45	-936.33	1068.34	8.00	
7025.00†	47.921	258.579	6730.09	-835.11	-951.76	1000.60	8.00	
7125.00†	55.702	260.955	6791.87	-756.59	-965.62	923.31	8.00	
7225.00†	63.520	262.924	6842.42	-670.42	-977.65	837.96	8.00	
7325.00†	71.361	264.641	6880.76	-578.28	-987.60	746.23	8.00	
7425.00†	79.217	266.206	6906.13	-481.96	-995.29	649.89	8.00	
7525.00†	87.080	267.690	6918.05	-383.33	-1000.56	550.83	8.00	
7562.12	90.000	268.233	6919.00 <sup>1</sup>	-346.52	-1001.88	513.75	8.00	End of 3D Arc
7625.00†	90.000	268.233	6919.00	-284.17	-1003.82	450.90	0.00	
7725.00†	90.000	268.233	6919.00	-185.01	-1006.91	350.94	0.00	
7825.00†	90.000	268.233	6919.00	-85.86	-1009.99	250.99	0.00	
7925.00†	90.000	268.233	6919.00	13.30	-1013.07	151.04	0.00	
8025.00†	90.000	268.233	6919.00	112.45	-1016.16	51.09	0.00	
8125.00†	90.000	268.233	6919.00	211.60	-1019.24	-48.86	0.00	
8225.00†	90.000	268.233	6919.00	310.76	-1022.32	-148.82	0.00	
8325.00†	90.000	268.233	6919.00	409.91	-1025.41	-248.77	0.00	
8425.00†	90.000	268.233	6919.00	509.07	-1028.49	-348.72	0.00	



# Planned Wellpath Report

GOETZEL 33N-30B-M REV-A.0 PWP

Page 5 of 8



## REFERENCE WELLPATH IDENTIFICATION

Operator	SYNERGY RESOURCES CORPORATION	Slot	SLOT#19 GOETZEL 33N-30B-M (2197'FSL & 2053'FWL, SEC.29)
Area	COLORADO	Well	GOETZEL 33N-30B-M
Field	WELD COUNTY (NAD83,TRUE NORTH)	Wellbore	GOETZEL 33N-30B-M PWB
Facility	SEC.29-T06N-R66W		

## WELLPATH DATA (164 stations) † = interpolated/extrapolated station

MD [ft]	Inclination [°]	Azimuth [°]	TVD [ft]	Vert Sect [ft]	North [ft]	East [ft]	DLS [°/100ft]	Comments
8525.00†	90.000	268.233	6919.00	608.22	-1031.57	-448.67	0.00	
8625.00†	90.000	268.233	6919.00	707.38	-1034.66	-548.63	0.00	
8725.00†	90.000	268.233	6919.00	806.53	-1037.74	-648.58	0.00	
8825.00†	90.000	268.233	6919.00	905.68	-1040.82	-748.53	0.00	
8925.00†	90.000	268.233	6919.00	1004.84	-1043.91	-848.48	0.00	
9025.00†	90.000	268.233	6919.00	1103.99	-1046.99	-948.44	0.00	
9125.00†	90.000	268.233	6919.00	1203.15	-1050.07	-1048.39	0.00	
9225.00†	90.000	268.233	6919.00	1302.30	-1053.16	-1148.34	0.00	
9325.00†	90.000	268.233	6919.00	1401.46	-1056.24	-1248.29	0.00	
9425.00†	90.000	268.233	6919.00	1500.61	-1059.33	-1348.25	0.00	
9525.00†	90.000	268.233	6919.00	1599.77	-1062.41	-1448.20	0.00	
9625.00†	90.000	268.233	6919.00	1698.92	-1065.49	-1548.15	0.00	
9725.00†	90.000	268.233	6919.00	1798.07	-1068.58	-1648.10	0.00	
9825.00†	90.000	268.233	6919.00	1897.23	-1071.66	-1748.06	0.00	
9925.00†	90.000	268.233	6919.00	1996.38	-1074.74	-1848.01	0.00	
10025.00†	90.000	268.233	6919.00	2095.54	-1077.83	-1947.96	0.00	
10125.00†	90.000	268.233	6919.00	2194.69	-1080.91	-2047.91	0.00	
10225.00†	90.000	268.233	6919.00	2293.85	-1083.99	-2147.87	0.00	
10325.00†	90.000	268.233	6919.00	2393.00	-1087.08	-2247.82	0.00	
10425.00†	90.000	268.233	6919.00	2492.15	-1090.16	-2347.77	0.00	
10525.00†	90.000	268.233	6919.00	2591.31	-1093.24	-2447.72	0.00	
10625.00†	90.000	268.233	6919.00	2690.46	-1096.33	-2547.68	0.00	
10725.00†	90.000	268.233	6919.00	2789.62	-1099.41	-2647.63	0.00	
10825.00†	90.000	268.233	6919.00	2888.77	-1102.49	-2747.58	0.00	
10925.00†	90.000	268.233	6919.00	2987.93	-1105.58	-2847.53	0.00	
11025.00†	90.000	268.233	6919.00	3087.08	-1108.66	-2947.49	0.00	
11125.00†	90.000	268.233	6919.00	3186.23	-1111.75	-3047.44	0.00	
11225.00†	90.000	268.233	6919.00	3285.39	-1114.83	-3147.39	0.00	
11325.00†	90.000	268.233	6919.00	3384.54	-1117.91	-3247.34	0.00	
11425.00†	90.000	268.233	6919.00	3483.70	-1121.00	-3347.30	0.00	



# Planned Wellpath Report

GOETZEL 33N-30B-M REV-A.0 PWP

Page 6 of 8



## REFERENCE WELLPATH IDENTIFICATION

Operator	SYNERGY RESOURCES CORPORATION	Slot	SLOT#19 GOETZEL 33N-30B-M (2197'FSL & 2053'FWL, SEC.29)
Area	COLORADO	Well	GOETZEL 33N-30B-M
Field	WELD COUNTY (NAD83,TRUE NORTH)	Wellbore	GOETZEL 33N-30B-M PWB
Facility	SEC.29-T06N-R66W		

## WELLPATH DATA (164 stations) † = interpolated/extrapolated station

MD [ft]	Inclination [°]	Azimuth [°]	TVD [ft]	Vert Sect [ft]	North [ft]	East [ft]	DLS [°/100ft]	Comments
11525.00†	90.000	268.233	6919.00	3582.85	-1124.08	-3447.25	0.00	
11625.00†	90.000	268.233	6919.00	3682.01	-1127.16	-3547.20	0.00	
11725.00†	90.000	268.233	6919.00	3781.16	-1130.25	-3647.15	0.00	
11825.00†	90.000	268.233	6919.00	3880.32	-1133.33	-3747.11	0.00	
11925.00†	90.000	268.233	6919.00	3979.47	-1136.41	-3847.06	0.00	
12025.00†	90.000	268.233	6919.00	4078.62	-1139.50	-3947.01	0.00	
12125.00†	90.000	268.233	6919.00	4177.78	-1142.58	-4046.96	0.00	
12225.00†	90.000	268.233	6919.00	4276.93	-1145.66	-4146.92	0.00	
12325.00†	90.000	268.233	6919.00	4376.09	-1148.75	-4246.87	0.00	
12425.00†	90.000	268.233	6919.00	4475.24	-1151.83	-4346.82	0.00	
12525.00†	90.000	268.233	6919.00	4574.40	-1154.91	-4446.77	0.00	
12625.00†	90.000	268.233	6919.00	4673.55	-1158.00	-4546.73	0.00	
12725.00†	90.000	268.233	6919.00	4772.70	-1161.08	-4646.68	0.00	
12825.00†	90.000	268.233	6919.00	4871.86	-1164.17	-4746.63	0.00	
12925.00†	90.000	268.233	6919.00	4971.01	-1167.25	-4846.58	0.00	
13025.00†	90.000	268.233	6919.00	5070.17	-1170.33	-4946.53	0.00	
13125.00†	90.000	268.233	6919.00	5169.32	-1173.42	-5046.49	0.00	
13225.00†	90.000	268.233	6919.00	5268.48	-1176.50	-5146.44	0.00	
13325.00†	90.000	268.233	6919.00	5367.63	-1179.58	-5246.39	0.00	
13425.00†	90.000	268.233	6919.00	5466.78	-1182.67	-5346.34	0.00	
13525.00†	90.000	268.233	6919.00	5565.94	-1185.75	-5446.30	0.00	
13625.00†	90.000	268.233	6919.00	5665.09	-1188.83	-5546.25	0.00	
13725.00†	90.000	268.233	6919.00	5764.25	-1191.92	-5646.20	0.00	
13825.00†	90.000	268.233	6919.00	5863.40	-1195.00	-5746.15	0.00	
13925.00†	90.000	268.233	6919.00	5962.56	-1198.08	-5846.11	0.00	
14025.00†	90.000	268.233	6919.00	6061.71	-1201.17	-5946.06	0.00	
14125.00†	90.000	268.233	6919.00	6160.87	-1204.25	-6046.01	0.00	
14225.00†	90.000	268.233	6919.00	6260.02	-1207.33	-6145.96	0.00	
14325.00†	90.000	268.233	6919.00	6359.17	-1210.42	-6245.92	0.00	
14425.00†	90.000	268.233	6919.00	6458.33	-1213.50	-6345.87	0.00	



# Planned Wellpath Report

GOETZEL 33N-30B-M REV-A.0 PWP

Page 7 of 8



## REFERENCE WELLPATH IDENTIFICATION

Operator	SYNERGY RESOURCES CORPORATION	Slot	SLOT#19 GOETZEL 33N-30B-M (2197'FSL & 2053'FWL, SEC.29)
Area	COLORADO	Well	GOETZEL 33N-30B-M
Field	WELD COUNTY (NAD83,TRUE NORTH)	Wellbore	GOETZEL 33N-30B-M PWB
Facility	SEC.29-T06N-R66W		

## WELLPATH DATA (164 stations) † = interpolated/extrapolated station

MD [ft]	Inclination [°]	Azimuth [°]	TVD [ft]	Vert Sect [ft]	North [ft]	East [ft]	DLS [°/100ft]	Comments
14525.00†	90.000	268.233	6919.00	6557.48	-1216.59	-6445.82	0.00	
14625.00†	90.000	268.233	6919.00	6656.64	-1219.67	-6545.77	0.00	
14725.00†	90.000	268.233	6919.00	6755.79	-1222.75	-6645.73	0.00	
14825.00†	90.000	268.233	6919.00	6854.95	-1225.84	-6745.68	0.00	
14925.00†	90.000	268.233	6919.00	6954.10	-1228.92	-6845.63	0.00	
15025.00†	90.000	268.233	6919.00	7053.25	-1232.00	-6945.58	0.00	
15125.00†	90.000	268.233	6919.00	7152.41	-1235.09	-7045.54	0.00	
15225.00†	90.000	268.233	6919.00	7251.56	-1238.17	-7145.49	0.00	
15325.00†	90.000	268.233	6919.00	7350.72	-1241.25	-7245.44	0.00	
15425.00†	90.000	268.233	6919.00	7449.87	-1244.34	-7345.39	0.00	
15525.00†	90.000	268.233	6919.00	7549.03	-1247.42	-7445.35	0.00	
15625.00†	90.000	268.233	6919.00	7648.18	-1250.50	-7545.30	0.00	
15725.00†	90.000	268.233	6919.00	7747.34	-1253.59	-7645.25	0.00	
15817.02	90.000	268.233	6919.00 <sup>2</sup>	7838.57	-1256.42	-7737.22	0.00	End of Tangent

## HOLE & CASING SECTIONS - Ref Wellbore: GOETZEL 33N-30B-M PWB Ref Wellpath: GOETZEL 33N-30B-M REV-A.0 PWP

String/Diameter	Start MD [ft]	End MD [ft]	Interval [ft]	Start TVD [ft]	End TVD [ft]	Start N/S [ft]	Start E/W [ft]	End N/S [ft]	End E/W [ft]
13.5in Open Hole	25.00	1700.00	1675.00	25.00	1693.06	0.00	0.00	-47.84	70.37
8.5in Open Hole	1700.00	15817.00	14117.00	1693.06	6919.00	-47.84	70.37	-1256.42	-7737.21



# Planned Wellpath Report

GOETZEL 33N-30B-M REV-A.0 PWP

Page 8 of 8



## REFERENCE WELLPATH IDENTIFICATION

Operator	SYNERGY RESOURCES CORPORATION	Slot	SLOT#19 GOETZEL 33N-30B-M (2197'FSL & 2053'FWL, SEC.29)
Area	COLORADO	Well	GOETZEL 33N-30B-M
Field	WELD COUNTY (NAD83,TRUE NORTH)	Wellbore	GOETZEL 33N-30B-M PWB
Facility	SEC.29-T06N-R66W		

## TARGETS

Name	MD [ft]	TVD [ft]	North [ft]	East [ft]	Grid East [US ft]	Grid North [US ft]	Latitude	Longitude	Shape
SEC.29-T06N-R66W NORTHERN		9.00	1302.42	822.30	3194449.66	1411671.99	40°27'40.817"N	104°48'04.259"W	polygon
SEC.29-T06N-R66W SOUTHERN		9.00	1302.42	822.30	3194449.66	1411671.99	40°27'40.817"N	104°48'04.259"W	polygon
SEC.30-T06N-R66W NORTHERN		9.00	1302.42	822.30	3194449.66	1411671.99	40°27'40.817"N	104°48'04.259"W	polygon
SEC.30-T06N-R66W SOUTHERN		9.00	1302.42	822.30	3194449.66	1411671.99	40°27'40.817"N	104°48'04.259"W	polygon
GOETZEL 33N-30B-M BHL ON PLAT (1304'FSL & 510'FWL SEC.30)		6919.00	-1236.46	-7377.36	3186270.49	1409068.94	40°27'15.718"N	104°49'50.329"W	circle
2) GOETZEL 33N-30B-M BHL REV-1 (1304'FSL & 150'FWL SEC.30)	15817.02	6919.00	-1256.42	-7737.22	3185910.81	1409046.15	40°27'15.520"N	104°49'54.984"W	point
1) GOETZEL 33N-30B-M TOP OF PROD REV-1 (1182'FSL & 2571'FWL SEC.29)	7562.12	6919.00	-1001.88	513.75	3194159.21	1409365.42	40°27'18.047"N	104°48'08.251"W	circle

## SURVEY PROGRAM - Ref Wellbore: GOETZEL 33N-30B-M PWB Ref Wellpath: GOETZEL 33N-30B-M REV-A.0 PWP

Start MD [ft]	End MD [ft]	Positional Uncertainty Model	Log Name/Comment	Wellbore
25.00	1700.00	Custom BHI NaviTrak (Standard Rotating+Axial Corr) (Rockies 0.03Gt model)		GOETZEL 33N-30B-M PWB
1700.00	15817.02	Custom BHI AutoTrak Curve (IFR1, Short) (Rockies 0.03Gt model)		GOETZEL 33N-30B-M PWB