

SYNERGY RESOURCES CORPORATION

Location: COLORADO Slot: SLOT#21 GOETZEL 13N-30A-M (2157'FSL & 2053'FWL, SEC.29)
Field: WELD COUNTY (NAD83,TRUE NORTH) Well: GOETZEL 13N-30A-M
Facility: SEC.29-T06N-R66W Wellbore: GOETZEL 13N-30A-M PWB

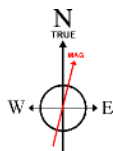
Plot reference wellpath is GOETZEL 13N-30A-M REV-A.0 PWP	Grid System: NAD83 / Lambert Colorado SP, Northern Zone (501), US feet
True vertical depths are referenced to H&P 562 (25) (RKB)	* = Wellpath was transformed from a different geodetic datum
Measured depths are referenced to H&P 562 (25) (RKB)	North Reference: True north
H&P 562 (25) (RKB) to Mean Sea Level: 4757 feet	Scale: True distance
Mean Sea Level to Mud line (At Slot: SLOT#21 GOETZEL 13N-30A-M (2157'FSL & 2053'FWL, SEC.29)): 0 feet	Depths are in feet
Coordinates are in feet referenced to Slot	Created by: wajrjam on 2017-02-27
	Database: WA_DEN_Denver, Deln

Location Information

Facility Name			Grid East (US ft)	Grid North (US ft)	Latitude	Longitude
SEC.29-T06N-R66W			3194449.646	1411672.008	40°27'40.817"N	104°48'04.259"W
Slot	Local N (ft)	Local E (ft)	Grid East (US ft)	Grid North (US ft)	Latitude	Longitude
SLOT#21 GOETZEL 13N-30A-M (2157'FSL & 2053'FWL, SEC.29)	-1342.49	-822.56	3193637.721	1410323.129	40°27'27.551"N	104°48'14.900"W
H&P 562 (25) (RKB) to Mud line (At Slot: SLOT#21 GOETZEL 13N-30A-M (2157'FSL & 2053'FWL, SEC.29))					4757ft	
Mean Sea Level to Mud line (At Slot: SLOT#21 GOETZEL 13N-30A-M (2157'FSL & 2053'FWL, SEC.29))					0ft	
H&P 562 (25) (RKB) to Mean Sea Level					4757ft	

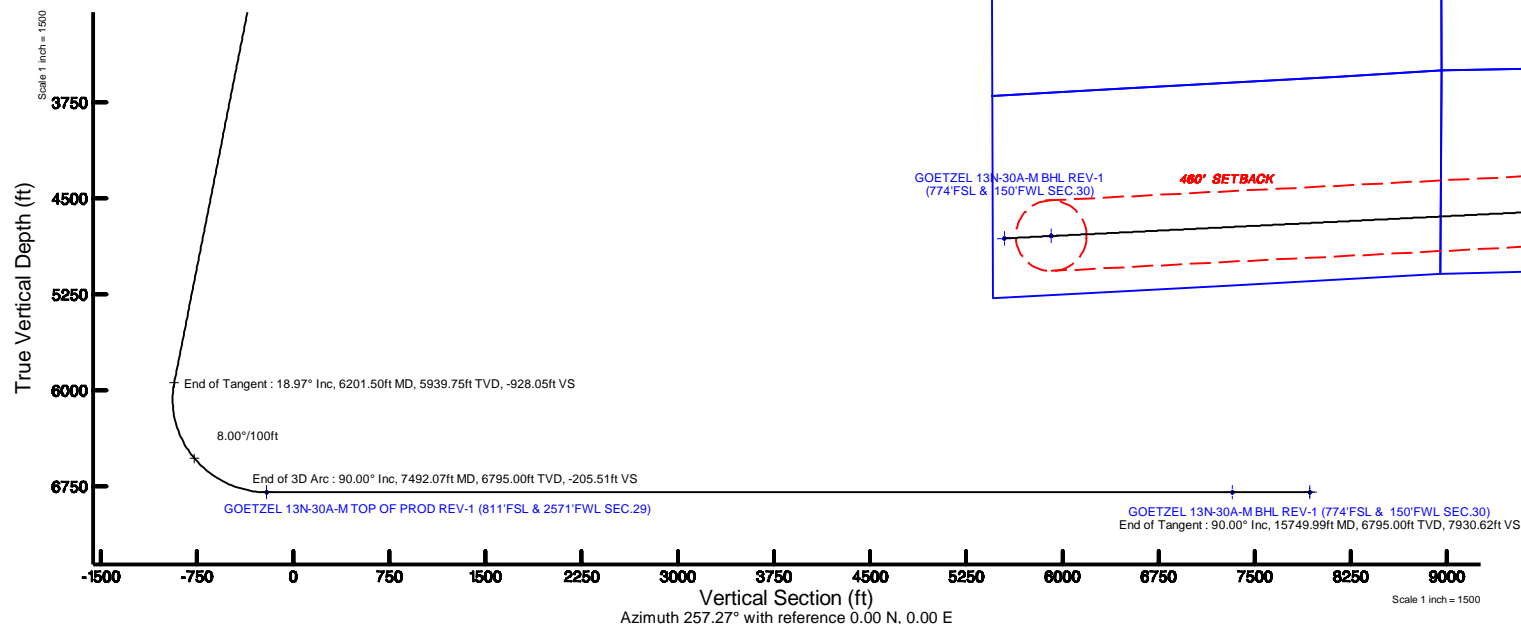
Tie-On Position

MD (ft)	Inc (°)	Az (°)	TVD (ft)	Local N (ft)	Local E (ft)	Grid East (US ft)	Grid North (US ft)	Latitude	Longitude
25.00	0.000	132.304	25.00	0.00	0.00	3193637.72	1410323.13	40°27'27.551"N	104°48'14.900"W



BGGM (1900.0 to 2018.0) Dip: 66.92° Field: 52499.6 nT
Magnetic North is 8.43 degrees East of True North (at 2/22/2017)

To correct azimuth from Magnetic to True add 8.43 degrees



Well Profile Data

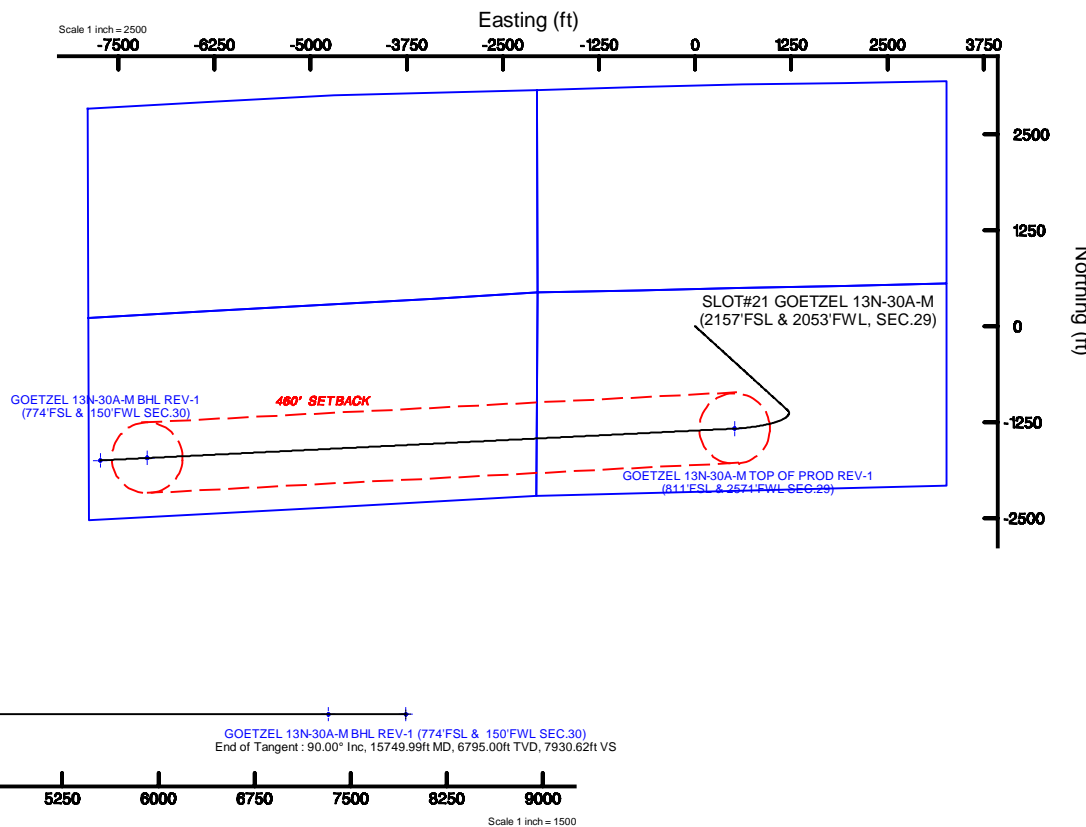
Design Comment	MD (ft)	Inc (°)	Az (°)	TVD (ft)	Local N (ft)	Local E (ft)	DLS (°/100ft)	VS (ft)
Tie On	25.00	0.000	132.304	25.00	0.00	0.00	0.00	0.00
End of Tangent	750.00	0.000	132.304	750.00	0.00	0.00	0.00	0.00
End of Build	1698.40	18.968	132.304	1681.17	-104.70	115.05	2.00	-89.16
End of Tangent	6201.50	18.968	132.304	5939.75	-1089.85	1197.57	0.00	-928.05
End of 3D Arc	7492.07	90.000	267.126	6795.00	-1333.05	511.76	8.00	-205.51
End of Tangent	15749.99	90.000	267.126	6795.00	-1747.16	-7735.77	0.00	7930.62

Survey Program

Start MD (ft)	End MD (ft)	Tool	Model	Log Name/Comment	Wellbore
25.00	1700.00	BH NewTrak	Custom BH NewTrak (Standard Rotations-Axial Corr) (Rockies 0.03Gr model)		GOETZEL 13N-30A-M PWB
1700.00	15749.99	BH AutoTrak Curve	Custom BH AutoTrak Curve (IFR1, Short) (Rockies 0.03Gr model)		GOETZEL 13N-30A-M PWB

Targets

Name	MD (ft)	TVD (ft)	Local N (ft)	Local E (ft)	Grid East (US ft)	Grid North (US ft)	Latitude	Longitude	
SEC.29-T06N-REV-NORTHERN		9.00	1342.50	822.53	3194449.66	1411671.99	40°27'40.817"N	104°48'04.259"W	
SEC.29-T06N-REV-SOUTHERN		9.00	1342.50	822.53	3194449.66	1411671.99	40°27'40.817"N	104°48'04.259"W	
SEC.30-T06N-REV-NORTHERN		9.00	1342.50	822.53	3194449.66	1411671.99	40°27'40.817"N	104°48'04.259"W	
SEC.30-T06N-REV-SOUTHERN		9.00	1342.50	822.53	3194449.66	1411671.99	40°27'40.817"N	104°48'04.259"W	
GOETZEL 13N-30A-M BHL ON PLAT (774'FSL & 762'FWL SEC.30)		6795.00	-1713.83	-7123.77	3186527.90	1408553.52	40°27'10.806"N	104°48'47.050"W	
GOETZEL 13N-30A-M BHL REV-1 (774'FSL & 150'FWL SEC.30)		15749.99	6795.00	-1747.16	-7735.77	3185916.20	1408515.39	40°27'10.274"N	104°48'54.968"W
GOETZEL 13N-30A-M TOP OF PROD REV-1 (811'FSL & 2571'FWL SEC.29)		7492.07	6795.00	-1333.05	511.76	3194159.91	1408994.19	40°27'14.378"N	104°48'08.280"W



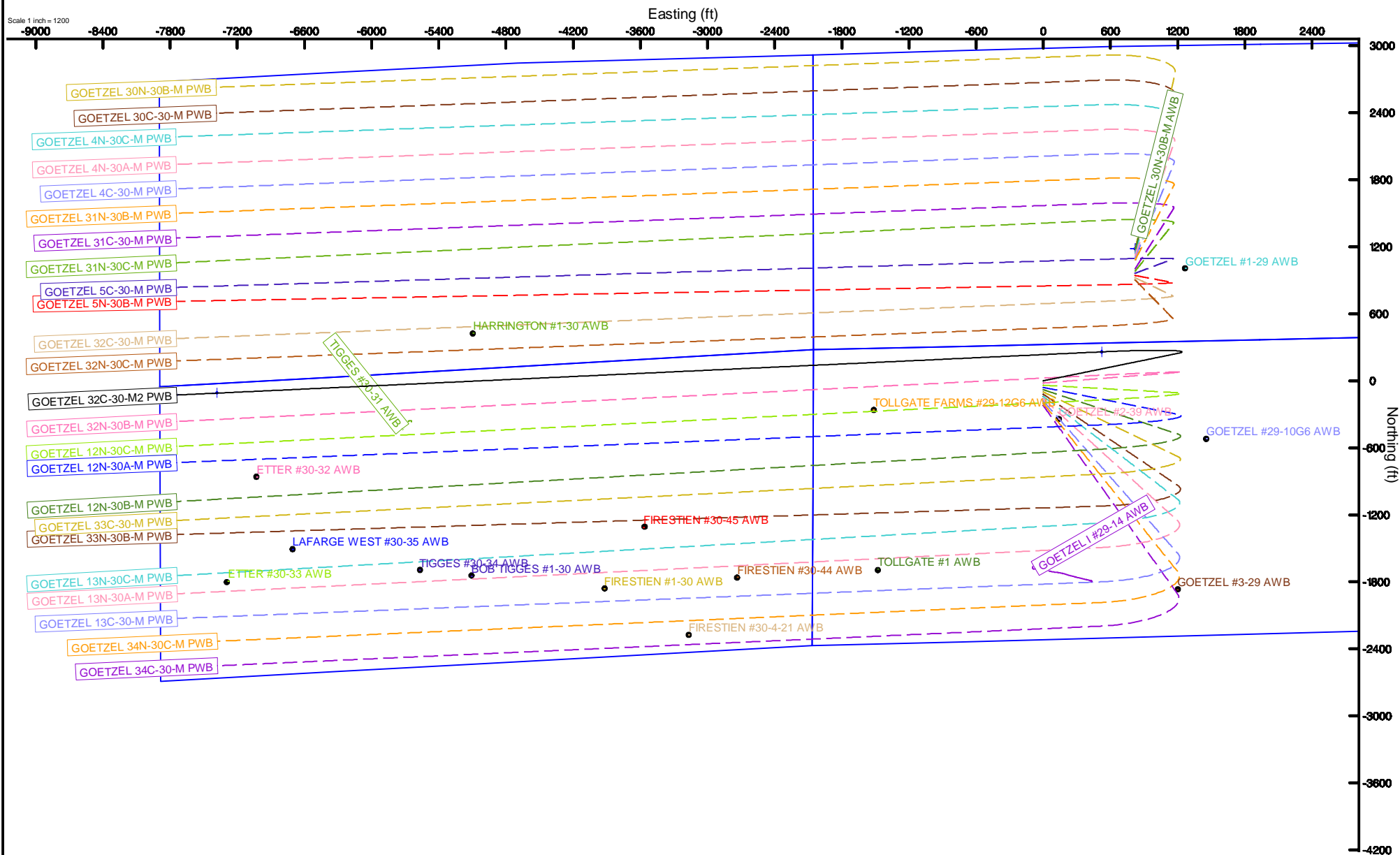
SYNERGY RESOURCES CORPORATION

Location: COLORADO Slot: SLOT#13 GOETZEL 32C-30-M2 (2317FSL & 2053FWL SEC.29)
 Field: WELD COUNTY (NAD83, TRUE NORTH) Well: GOETZEL 32C-30-M2
 Facility: SEC.29-T06N-R66W Wellbore: GOETZEL 32C-30-M2 PWB



BGGM (1900.0 to 2018.0) Dip: 66.92° Field: 52499.6 nT
 Magnetic North is 8.43 degrees East of True North (at 2/22/2017)

To correct azimuth from Magnetic to True add 8.43 degrees



GOETZEL_13N-30A-M_REV-A.0_PWP.1as

~VERSION INFORMATION

VERS. 2.0 : CWLS LOG ASCII STANDARD-VERSION 2.0

WRAP. NO : ASCII DATA SECTION CONTAINS ONE ROW PER WELLPATH STATION

~WELL INFORMATION

#MNEM	.UNITS	DATA	:DESCRIPTION
#----	.-----	----	:-----
STRT	.ft	0.00	:START MD
STOP	.ft	15749.99	:STOP MD
STEP	.ft	0.0	:STEP (non-uniform increment)
NULL	.	-999.99	:NULL
COMP	.	SYNERGY RESOURCES CORPORATION	:OPERATOR
WELL	.	GOETZEL 13N-30A-M	:WELL
FLD	.	WELD COUNTY (NAD83,TRUE NORTH)	:FIELD
LOC	.	COLORADO	:AREA (aka: Location)
CNTY	.	N/A	:COUNTY
STAT	.	N/A	:STATE
CTRY	.	N/A	:COUNTRY
SRVC	.	Baker Hughes	:CONTRACTOR
DATE	.	02/23/2017	:LOG REV DATE
API	.		:API NUMBER

~OTHER INFORMATION

#Software: wellArchitect(R) Version 5.0

#MNEM	.UNITS	DATA	:DESCRIPTION
#----	.-----	----	:-----
WPTYPE	.	PLANNED WELLPATH	:WELLPATH TYPE
FACILITY	.	SEC.29-T06N-R66W	:FACILITY
SLOT	.	SLOT#21 GOETZEL 13N-30A-M (2157'FSL & 2053'FWL, SEC.29):SLOT	:SLOT
WELLBORE	.	GOETZEL 13N-30A-M PWB	:WELLBORE
WELLPATH	.	GOETZEL 13N-30A-M REV-A.0 PWP	:WELLPATH
MDREFPT	.	H&P 562 (25') (RKB)	:MD REFERENCE POINT
TVDREFPT	.	H&P 562 (25') (RKB)	:TVD REFERENCE POINT
LCLREFPT	.	slot	:LOCAL COORDINATE REFERENCE PT
VSAZIMUTH.deg		257.27	:VERTICAL SECTION AZIMUTH
VSORIGN .ft		0.00	:VERTICAL SECTION ORIGIN NORTH
VSORIGE .ft		0.00	:VERTICAL SECTION ORIGIN EAST

~CURVE (WELLPATH) INFORMATION

#MNEM	.UNITS	:DESCRIPTION
#----	.-----	:-----
DEPT	.ft	:MEASURED DEPTH
INC	.deg	:INCLINATION
AZI	.deg	:AZIMUTH

GOETZEL_13N-30A-M_REV-A.0_PWP.1as

TVD .ft :TRUE VERTICAL DEPTH
 SECT .ft :CROSS SECTION (CURTAIN/VERTICAL)
 LOCALN .ft :LOCAL NORTH
 LOCALE .ft :LOCAL EAST
 LAT .deg :LATITUDE
 LONG .deg :LONGITUDE
 DLS .deg/100ft :DOGLEG SEVERITY

~ASCII DATA

0.00	0.00	132.30	0.00	0.00	0.00	0.00	40.4576531	-104.8041389	0.00
25.00	0.00	132.30	25.00	0.00	0.00	0.00	40.4576531	-104.8041389	0.00
125.00	0.00	132.30	125.00	0.00	0.00	0.00	40.4576531	-104.8041389	0.00
225.00	0.00	132.30	225.00	0.00	0.00	0.00	40.4576531	-104.8041389	0.00
325.00	0.00	132.30	325.00	0.00	0.00	0.00	40.4576531	-104.8041389	0.00
425.00	0.00	132.30	425.00	0.00	0.00	0.00	40.4576531	-104.8041389	0.00
525.00	0.00	132.30	525.00	0.00	0.00	0.00	40.4576531	-104.8041389	0.00
625.00	0.00	132.30	625.00	0.00	0.00	0.00	40.4576531	-104.8041389	0.00
725.00	0.00	132.30	725.00	0.00	0.00	0.00	40.4576531	-104.8041389	0.00
750.00	0.00	132.30	750.00	0.00	0.00	0.00	40.4576531	-104.8041389	0.00
825.00	1.50	132.30	824.99	-0.56	-0.66	0.73	40.4576512	-104.8041363	2.00
925.00	3.50	132.30	924.89	-3.06	-3.60	3.95	40.4576432	-104.8041247	2.00
1025.00	5.50	132.30	1024.58	-7.56	-8.88	9.75	40.4576287	-104.8041038	2.00
1125.00	7.50	132.30	1123.93	-14.05	-16.50	18.13	40.4576078	-104.8040738	2.00
1225.00	9.50	132.30	1222.83	-22.52	-26.44	29.06	40.4575805	-104.8040345	2.00
1325.00	11.50	132.30	1321.15	-32.96	-38.71	42.53	40.4575468	-104.8039860	2.00
1425.00	13.50	132.30	1418.77	-45.37	-53.28	58.54	40.4575068	-104.8039285	2.00
1525.00	15.50	132.30	1515.58	-59.72	-70.13	77.06	40.4574606	-104.8038620	2.00
1625.00	17.50	132.30	1611.46	-75.99	-89.24	98.06	40.4574081	-104.8037865	2.00
1698.40	18.97	132.30	1681.17	-89.16	-104.70	115.05	40.4573657	-104.8037255	2.00
1725.00	18.97	132.30	1706.33	-94.11	-110.52	121.44	40.4573497	-104.8037025	0.00
1825.00	18.97	132.30	1800.90	-112.74	-132.40	145.48	40.4572896	-104.8036161	0.00
1925.00	18.97	132.30	1895.47	-131.37	-154.27	169.52	40.4572296	-104.8035297	0.00
2025.00	18.97	132.30	1990.04	-150.00	-176.15	193.56	40.4571695	-104.8034433	0.00
2125.00	18.97	132.30	2084.61	-168.63	-198.03	217.60	40.4571095	-104.8033570	0.00
2225.00	18.97	132.30	2179.18	-187.26	-219.90	241.64	40.4570494	-104.8032706	0.00
2325.00	18.97	132.30	2273.75	-205.89	-241.78	265.68	40.4569894	-104.8031842	0.00
2425.00	18.97	132.30	2368.32	-224.52	-263.66	289.72	40.4569293	-104.8030978	0.00
2525.00	18.97	132.30	2462.89	-243.15	-285.54	313.76	40.4568693	-104.8030114	0.00
2625.00	18.97	132.30	2557.46	-261.77	-307.41	337.80	40.4568092	-104.8029250	0.00
2725.00	18.97	132.30	2652.03	-280.40	-329.29	361.84	40.4567492	-104.8028387	0.00
2825.00	18.97	132.30	2746.60	-299.03	-351.17	385.88	40.4566891	-104.8027523	0.00
2925.00	18.97	132.30	2841.17	-317.66	-373.04	409.92	40.4566291	-104.8026659	0.00
3025.00	18.97	132.30	2935.74	-336.29	-394.92	433.96	40.4565690	-104.8025795	0.00
3125.00	18.97	132.30	3030.31	-354.92	-416.80	458.00	40.4565090	-104.8024931	0.00

GOETZEL_13N-30A-M_REV-A.0_PWP.1as

3225.00	18.97	132.30	3124.88	-373.55	-438.68	482.04	40.4564489	-104.8024067	0.00
3325.00	18.97	132.30	3219.45	-392.18	-460.55	506.08	40.4563889	-104.8023204	0.00
3425.00	18.97	132.30	3314.02	-410.81	-482.43	530.12	40.4563288	-104.8022340	0.00
3525.00	18.97	132.30	3408.59	-429.44	-504.31	554.15	40.4562688	-104.8021476	0.00
3625.00	18.97	132.30	3503.16	-448.07	-526.18	578.19	40.4562087	-104.8020612	0.00
3725.00	18.97	132.30	3597.73	-466.70	-548.06	602.23	40.4561487	-104.8019748	0.00
3825.00	18.97	132.30	3692.30	-485.33	-569.94	626.27	40.4560886	-104.8018885	0.00
3925.00	18.97	132.30	3786.87	-503.96	-591.82	650.31	40.4560286	-104.8018021	0.00
4025.00	18.97	132.30	3881.44	-522.58	-613.69	674.35	40.4559685	-104.8017157	0.00
4125.00	18.97	132.30	3976.01	-541.21	-635.57	698.39	40.4559085	-104.8016293	0.00
4225.00	18.97	132.30	4070.58	-559.84	-657.45	722.43	40.4558484	-104.8015429	0.00
4325.00	18.97	132.30	4165.15	-578.47	-679.32	746.47	40.4557884	-104.8014566	0.00
4425.00	18.97	132.30	4259.72	-597.10	-701.20	770.51	40.4557283	-104.8013702	0.00
4525.00	18.97	132.30	4354.29	-615.73	-723.08	794.55	40.4556683	-104.8012838	0.00
4625.00	18.97	132.30	4448.86	-634.36	-744.96	818.59	40.4556082	-104.8011974	0.00
4725.00	18.97	132.30	4543.43	-652.99	-766.83	842.63	40.4555482	-104.8011110	0.00
4825.00	18.97	132.30	4638.00	-671.62	-788.71	866.67	40.4554881	-104.8010247	0.00
4925.00	18.97	132.30	4732.57	-690.25	-810.59	890.71	40.4554281	-104.8009383	0.00
5025.00	18.97	132.30	4827.14	-708.88	-832.46	914.75	40.4553680	-104.8008519	0.00
5125.00	18.97	132.30	4921.71	-727.51	-854.34	938.79	40.4553079	-104.8007655	0.00
5225.00	18.97	132.30	5016.28	-746.14	-876.22	962.83	40.4552479	-104.8006791	0.00
5325.00	18.97	132.30	5110.85	-764.76	-898.10	986.87	40.4551878	-104.8005928	0.00
5425.00	18.97	132.30	5205.42	-783.39	-919.97	1010.91	40.4551278	-104.8005064	0.00
5525.00	18.97	132.30	5299.99	-802.02	-941.85	1034.95	40.4550677	-104.8004200	0.00
5625.00	18.97	132.30	5394.56	-820.65	-963.73	1058.99	40.4550077	-104.8003336	0.00
5725.00	18.97	132.30	5489.13	-839.28	-985.60	1083.02	40.4549476	-104.8002473	0.00
5825.00	18.97	132.30	5583.70	-857.91	-1007.48	1107.06	40.4548876	-104.8001609	0.00
5925.00	18.97	132.30	5678.27	-876.54	-1029.36	1131.10	40.4548275	-104.8000745	0.00
6025.00	18.97	132.30	5772.84	-895.17	-1051.24	1155.14	40.4547675	-104.7999881	0.00
6125.00	18.97	132.30	5867.41	-913.80	-1073.11	1179.18	40.4547074	-104.7999017	0.00
6201.50	18.97	132.30	5939.75	-928.05	-1089.85	1197.57	40.4546615	-104.7998357	0.00
6225.00	17.73	136.81	5962.06	-932.05	-1095.03	1202.85	40.4546473	-104.7998167	8.00
6325.00	14.10	163.18	6058.33	-940.66	-1117.83	1216.82	40.4545847	-104.7997665	8.00
6425.00	14.45	196.02	6155.40	-935.52	-1141.52	1216.90	40.4545197	-104.7997662	8.00
6525.00	18.56	220.55	6251.38	-916.74	-1165.64	1203.09	40.4544534	-104.7998158	8.00
6625.00	24.60	234.96	6344.39	-884.67	-1189.72	1175.66	40.4543873	-104.7999144	8.00
6725.00	31.49	243.68	6432.63	-839.96	-1213.29	1135.14	40.4543226	-104.8000600	8.00
6825.00	38.77	249.46	6514.38	-783.46	-1235.90	1082.33	40.4542606	-104.8002498	8.00
6925.00	46.26	253.64	6588.05	-716.27	-1257.10	1018.24	40.4542024	-104.8004801	8.00
7025.00	53.87	256.87	6652.21	-639.71	-1276.48	944.13	40.4541492	-104.8007464	8.00
7125.00	61.55	259.53	6705.59	-555.27	-1293.66	861.43	40.4541021	-104.8010435	8.00
7225.00	69.27	261.83	6747.18	-464.58	-1308.32	771.77	40.4540619	-104.8013657	8.00
7325.00	77.02	263.90	6776.15	-369.41	-1320.15	676.88	40.4540294	-104.8017067	8.00
7425.00	84.79	265.85	6791.95	-271.62	-1328.95	578.61	40.4540053	-104.8020598	8.00

GOETZEL_13N-30A-M_REV-A.0_PWP.1as									
7492.07	90.00	267.13	6795.00	-205.51	-1333.05	511.76	40.4539940	-104.8023000	8.00
7525.00	90.00	267.13	6795.00	-173.06	-1334.70	478.87	40.4539895	-104.8024182	0.00
7625.00	90.00	267.13	6795.00	-74.54	-1339.71	379.00	40.4539757	-104.8027771	0.00
7725.00	90.00	267.13	6795.00	23.99	-1344.73	279.12	40.4539619	-104.8031359	0.00
7825.00	90.00	267.13	6795.00	122.51	-1349.74	179.25	40.4539482	-104.8034948	0.00
7925.00	90.00	267.13	6795.00	221.04	-1354.76	79.37	40.4539344	-104.8038537	0.00
8025.00	90.00	267.13	6795.00	319.56	-1359.77	-20.50	40.4539207	-104.8042126	0.00
8125.00	90.00	267.13	6795.00	418.09	-1364.79	-120.37	40.4539069	-104.8045714	0.00
8225.00	90.00	267.13	6795.00	516.61	-1369.80	-220.25	40.4538931	-104.8049303	0.00
8325.00	90.00	267.13	6795.00	615.14	-1374.81	-320.12	40.4538794	-104.8052892	0.00
8425.00	90.00	267.13	6795.00	713.66	-1379.83	-420.00	40.4538656	-104.8056480	0.00
8525.00	90.00	267.13	6795.00	812.19	-1384.84	-519.87	40.4538518	-104.8060069	0.00
8625.00	90.00	267.13	6795.00	910.71	-1389.86	-619.75	40.4538380	-104.8063658	0.00
8725.00	90.00	267.13	6795.00	1009.24	-1394.87	-719.62	40.4538243	-104.8067247	0.00
8825.00	90.00	267.13	6795.00	1107.76	-1399.89	-819.49	40.4538105	-104.8070835	0.00
8925.00	90.00	267.13	6795.00	1206.29	-1404.90	-919.37	40.4537967	-104.8074424	0.00
9025.00	90.00	267.13	6795.00	1304.81	-1409.92	-1019.24	40.4537830	-104.8078013	0.00
9125.00	90.00	267.13	6795.00	1403.34	-1414.93	-1119.12	40.4537692	-104.8081601	0.00
9225.00	90.00	267.13	6795.00	1501.86	-1419.95	-1218.99	40.4537554	-104.8085190	0.00
9325.00	90.00	267.13	6795.00	1600.39	-1424.96	-1318.86	40.4537416	-104.8088779	0.00
9425.00	90.00	267.13	6795.00	1698.91	-1429.98	-1418.74	40.4537278	-104.8092368	0.00
9525.00	90.00	267.13	6795.00	1797.44	-1434.99	-1518.61	40.4537141	-104.8095956	0.00
9625.00	90.00	267.13	6795.00	1895.96	-1440.01	-1618.49	40.4537003	-104.8099545	0.00
9725.00	90.00	267.13	6795.00	1994.49	-1445.02	-1718.36	40.4536865	-104.8103134	0.00
9825.00	90.00	267.13	6795.00	2093.01	-1450.04	-1818.24	40.4536727	-104.8106722	0.00
9925.00	90.00	267.13	6795.00	2191.54	-1455.05	-1918.11	40.4536589	-104.8110311	0.00
10025.00	90.00	267.13	6795.00	2290.06	-1460.07	-2017.98	40.4536451	-104.8113900	0.00
10125.00	90.00	267.13	6795.00	2388.59	-1465.08	-2117.86	40.4536313	-104.8117489	0.00
10225.00	90.00	267.13	6795.00	2487.11	-1470.09	-2217.73	40.4536176	-104.8121077	0.00
10325.00	90.00	267.13	6795.00	2585.64	-1475.11	-2317.61	40.4536038	-104.8124666	0.00
10425.00	90.00	267.13	6795.00	2684.17	-1480.12	-2417.48	40.4535900	-104.8128255	0.00
10525.00	90.00	267.13	6795.00	2782.69	-1485.14	-2517.36	40.4535762	-104.8131843	0.00
10625.00	90.00	267.13	6795.00	2881.22	-1490.15	-2617.23	40.4535624	-104.8135432	0.00
10725.00	90.00	267.13	6795.00	2979.74	-1495.17	-2717.10	40.4535486	-104.8139021	0.00
10825.00	90.00	267.13	6795.00	3078.27	-1500.18	-2816.98	40.4535348	-104.8142609	0.00
10925.00	90.00	267.13	6795.00	3176.79	-1505.20	-2916.85	40.4535210	-104.8146198	0.00
11025.00	90.00	267.13	6795.00	3275.32	-1510.21	-3016.73	40.4535072	-104.8149787	0.00
11125.00	90.00	267.13	6795.00	3373.84	-1515.23	-3116.60	40.4534934	-104.8153375	0.00
11225.00	90.00	267.13	6795.00	3472.37	-1520.24	-3216.47	40.4534796	-104.8156964	0.00
11325.00	90.00	267.13	6795.00	3570.89	-1525.26	-3316.35	40.4534658	-104.8160553	0.00
11425.00	90.00	267.13	6795.00	3669.42	-1530.27	-3416.22	40.4534520	-104.8164141	0.00
11525.00	90.00	267.13	6795.00	3767.94	-1535.29	-3516.10	40.4534382	-104.8167730	0.00
11625.00	90.00	267.13	6795.00	3866.47	-1540.30	-3615.97	40.4534244	-104.8171319	0.00
11725.00	90.00	267.13	6795.00	3964.99	-1545.32	-3715.85	40.4534106	-104.8174907	0.00

GOETZEL_13N-30A-M_REV-A.0_PWP.1as									
11825.00	90.00	267.13	6795.00	4063.52	-1550.33	-3815.72	40.4533968	-104.8178496	0.00
11925.00	90.00	267.13	6795.00	4162.04	-1555.35	-3915.59	40.4533830	-104.8182085	0.00
12025.00	90.00	267.13	6795.00	4260.57	-1560.36	-4015.47	40.4533692	-104.8185674	0.00
12125.00	90.00	267.13	6795.00	4359.09	-1565.37	-4115.34	40.4533554	-104.8189262	0.00
12225.00	90.00	267.13	6795.00	4457.62	-1570.39	-4215.22	40.4533415	-104.8192851	0.00
12325.00	90.00	267.13	6795.00	4556.14	-1575.40	-4315.09	40.4533277	-104.8196440	0.00
12425.00	90.00	267.13	6795.00	4654.67	-1580.42	-4414.96	40.4533139	-104.8200028	0.00
12525.00	90.00	267.13	6795.00	4753.19	-1585.43	-4514.84	40.4533001	-104.8203617	0.00
12625.00	90.00	267.13	6795.00	4851.72	-1590.45	-4614.71	40.4532863	-104.8207206	0.00
12725.00	90.00	267.13	6795.00	4950.24	-1595.46	-4714.59	40.4532725	-104.8210794	0.00
12825.00	90.00	267.13	6795.00	5048.77	-1600.48	-4814.46	40.4532587	-104.8214383	0.00
12925.00	90.00	267.13	6795.00	5147.29	-1605.49	-4914.34	40.4532448	-104.8217971	0.00
13025.00	90.00	267.13	6795.00	5245.82	-1610.51	-5014.21	40.4532310	-104.8221560	0.00
13125.00	90.00	267.13	6795.00	5344.34	-1615.52	-5114.08	40.4532172	-104.8225149	0.00
13225.00	90.00	267.13	6795.00	5442.87	-1620.54	-5213.96	40.4532034	-104.8228737	0.00
13325.00	90.00	267.13	6795.00	5541.39	-1625.55	-5313.83	40.4531896	-104.8232326	0.00
13425.00	90.00	267.13	6795.00	5639.92	-1630.57	-5413.71	40.4531757	-104.8235915	0.00
13525.00	90.00	267.13	6795.00	5738.44	-1635.58	-5513.58	40.4531619	-104.8239503	0.00
13625.00	90.00	267.13	6795.00	5836.97	-1640.60	-5613.45	40.4531481	-104.8243092	0.00
13725.00	90.00	267.13	6795.00	5935.49	-1645.61	-5713.33	40.4531342	-104.8246681	0.00
13825.00	90.00	267.13	6795.00	6034.02	-1650.63	-5813.20	40.4531204	-104.8250269	0.00
13925.00	90.00	267.13	6795.00	6132.55	-1655.64	-5913.08	40.4531066	-104.8253858	0.00
14025.00	90.00	267.13	6795.00	6231.07	-1660.65	-6012.95	40.4530928	-104.8257447	0.00
14125.00	90.00	267.13	6795.00	6329.60	-1665.67	-6112.83	40.4530789	-104.8261035	0.00
14225.00	90.00	267.13	6795.00	6428.12	-1670.68	-6212.70	40.4530651	-104.8264624	0.00
14325.00	90.00	267.13	6795.00	6526.65	-1675.70	-6312.57	40.4530513	-104.8268213	0.00
14425.00	90.00	267.13	6795.00	6625.17	-1680.71	-6412.45	40.4530374	-104.8271801	0.00
14525.00	90.00	267.13	6795.00	6723.70	-1685.73	-6512.32	40.4530236	-104.8275390	0.00
14625.00	90.00	267.13	6795.00	6822.22	-1690.74	-6612.20	40.4530097	-104.8278978	0.00
14725.00	90.00	267.13	6795.00	6920.75	-1695.76	-6712.07	40.4529959	-104.8282567	0.00
14825.00	90.00	267.13	6795.00	7019.27	-1700.77	-6811.94	40.4529821	-104.8286156	0.00
14925.00	90.00	267.13	6795.00	7117.80	-1705.79	-6911.82	40.4529682	-104.8289744	0.00
15025.00	90.00	267.13	6795.00	7216.32	-1710.80	-7011.69	40.4529544	-104.8293333	0.00
15125.00	90.00	267.13	6795.00	7314.85	-1715.82	-7111.57	40.4529405	-104.8296922	0.00
15225.00	90.00	267.13	6795.00	7413.37	-1720.83	-7211.44	40.4529267	-104.8300510	0.00
15325.00	90.00	267.13	6795.00	7511.90	-1725.85	-7311.32	40.4529129	-104.8304099	0.00
15425.00	90.00	267.13	6795.00	7610.42	-1730.86	-7411.19	40.4528990	-104.8307687	0.00
15525.00	90.00	267.13	6795.00	7708.95	-1735.88	-7511.06	40.4528852	-104.8311276	0.00
15625.00	90.00	267.13	6795.00	7807.47	-1740.89	-7610.94	40.4528713	-104.8314865	0.00
15725.00	90.00	267.13	6795.00	7906.00	-1745.91	-7710.81	40.4528575	-104.8318453	0.00
15749.99	90.00	267.13	6795.00	7930.62	-1747.16	-7735.77	40.4528540	-104.8319350	0.00



Planned Wellpath Report

GOETZEL 13N-30A-M REV-A.0 PWP

Page 1 of 8



REFERENCE WELLPATH IDENTIFICATION

Operator	SYNERGY RESOURCES CORPORATION	Slot	SLOT#21 GOETZEL 13N-30A-M (2157'FSL & 2053'FWL, SEC.29)
Area	COLORADO	Well	GOETZEL 13N-30A-M
Field	WELD COUNTY (NAD83,TRUE NORTH)	Wellbore	GOETZEL 13N-30A-M PWB
Facility	SEC.29-T06N-R66W		

REPORT SETUP INFORMATION

Projection System	NAD83 / Lambert Colorado SP, Northern Zone (501), US feet	Software System	WellArchitect® 5.0
North Reference	True	User	Wagnjam
Scale	0.999963	Report Generated	2/27/2017 at 6:18:34 PM
Convergence at slot	0.45° East	Database/Source file	WA_DEN_Denver_Defn/GOETZEL_13N-30A-M_REV-A.0_PWP.xml

WELLPATH LOCATION

	Local coordinates		Grid coordinates		Geographic coordinates	
	North[ft]	East[ft]	Easting[US ft]	Northing[US ft]	Latitude	Longitude
Slot Location	-1342.49	-822.56	3193637.72	1410323.13	40°27'27.551"N	104°48'14.900"W
Facility Reference Pt			3194449.65	1411672.01	40°27'40.817"N	104°48'04.259"W
Field Reference Pt			3171284.48	1426358.81	40°30'07.643"N	104°53'02.634"W

WELLPATH DATUM

Calculation method	Minimum curvature	H&P 562 (25') (RKB) to Facility Vertical Datum	4757.00ft
Horizontal Reference Pt	Slot	H&P 562 (25') (RKB) to Mean Sea Level	4757.00ft
Vertical Reference Pt	H&P 562 (25') (RKB)	H&P 562 (25') (RKB) to Mud Line at Slot (SLOT#21 GOETZEL 13N-30A-M (2157'FSL & 2053'FWL, SEC.29))	4757.00ft
MD Reference Pt	H&P 562 (25') (RKB)	Section Origin	N 0.00, E 0.00 ft
Field Vertical Reference	Mean Sea Level	Section Azimuth	257.27°



Planned Wellpath Report

GOETZEL 13N-30A-M REV-A.0 PWP

Page 2 of 8



REFERENCE WELLPATH IDENTIFICATION

Operator	SYNERGY RESOURCES CORPORATION	Slot	SLOT#21 GOETZEL 13N-30A-M (2157'FSL & 2053'FWL, SEC.29)
Area	COLORADO	Well	GOETZEL 13N-30A-M
Field	WELD COUNTY (NAD83,TRUE NORTH)	Wellbore	GOETZEL 13N-30A-M PWB
Facility	SEC.29-T06N-R66W		

WELLPATH DATA (164 stations) † = interpolated/extrapolated station

MD [ft]	Inclination [°]	Azimuth [°]	TVD [ft]	Vert Sect [ft]	North [ft]	East [ft]	DLS [°/100ft]	Comments
0.00†	0.000	132.304	0.00	0.00	0.00	0.00	0.00	
25.00	0.000	132.304	25.00	0.00	0.00	0.00	0.00	Tie On
125.00†	0.000	132.304	125.00	0.00	0.00	0.00	0.00	
225.00†	0.000	132.304	225.00	0.00	0.00	0.00	0.00	
325.00†	0.000	132.304	325.00	0.00	0.00	0.00	0.00	
425.00†	0.000	132.304	425.00	0.00	0.00	0.00	0.00	
525.00†	0.000	132.304	525.00	0.00	0.00	0.00	0.00	
625.00†	0.000	132.304	625.00	0.00	0.00	0.00	0.00	
725.00†	0.000	132.304	725.00	0.00	0.00	0.00	0.00	
750.00	0.000	132.304	750.00	0.00	0.00	0.00	0.00	End of Tangent
825.00†	1.500	132.304	824.99	-0.56	-0.66	0.73	2.00	
925.00†	3.500	132.304	924.89	-3.06	-3.60	3.95	2.00	
1025.00†	5.500	132.304	1024.58	-7.56	-8.88	9.75	2.00	
1125.00†	7.500	132.304	1123.93	-14.05	-16.50	18.13	2.00	
1225.00†	9.500	132.304	1222.83	-22.52	-26.44	29.06	2.00	
1325.00†	11.500	132.304	1321.15	-32.96	-38.71	42.53	2.00	
1425.00†	13.500	132.304	1418.77	-45.37	-53.28	58.54	2.00	
1525.00†	15.500	132.304	1515.58	-59.72	-70.13	77.06	2.00	
1625.00†	17.500	132.304	1611.46	-75.99	-89.24	98.06	2.00	
1698.40	18.968	132.304	1681.17	-89.16	-104.70	115.05	2.00	End of Build
1725.00†	18.968	132.304	1706.33	-94.11	-110.52	121.44	0.00	
1825.00†	18.968	132.304	1800.90	-112.74	-132.40	145.48	0.00	
1925.00†	18.968	132.304	1895.47	-131.37	-154.27	169.52	0.00	
2025.00†	18.968	132.304	1990.04	-150.00	-176.15	193.56	0.00	
2125.00†	18.968	132.304	2084.61	-168.63	-198.03	217.60	0.00	
2225.00†	18.968	132.304	2179.18	-187.26	-219.90	241.64	0.00	
2325.00†	18.968	132.304	2273.75	-205.89	-241.78	265.68	0.00	
2425.00†	18.968	132.304	2368.32	-224.52	-263.66	289.72	0.00	
2525.00†	18.968	132.304	2462.89	-243.15	-285.54	313.76	0.00	
2625.00†	18.968	132.304	2557.46	-261.77	-307.41	337.80	0.00	



Planned Wellpath Report

GOETZEL 13N-30A-M REV-A.0 PWP

Page 3 of 8



REFERENCE WELLPATH IDENTIFICATION

Operator	SYNERGY RESOURCES CORPORATION	Slot	SLOT#21 GOETZEL 13N-30A-M (2157'FSL & 2053'FWL, SEC.29)
Area	COLORADO	Well	GOETZEL 13N-30A-M
Field	WELD COUNTY (NAD83,TRUE NORTH)	Wellbore	GOETZEL 13N-30A-M PWB
Facility	SEC.29-T06N-R66W		

WELLPATH DATA (164 stations) † = interpolated/extrapolated station

MD [ft]	Inclination [°]	Azimuth [°]	TVD [ft]	Vert Sect [ft]	North [ft]	East [ft]	DLS [°/100ft]	Comments
2725.00†	18.968	132.304	2652.03	-280.40	-329.29	361.84	0.00	
2825.00†	18.968	132.304	2746.60	-299.03	-351.17	385.88	0.00	
2925.00†	18.968	132.304	2841.17	-317.66	-373.04	409.92	0.00	
3025.00†	18.968	132.304	2935.74	-336.29	-394.92	433.96	0.00	
3125.00†	18.968	132.304	3030.31	-354.92	-416.80	458.00	0.00	
3225.00†	18.968	132.304	3124.88	-373.55	-438.68	482.04	0.00	
3325.00†	18.968	132.304	3219.45	-392.18	-460.55	506.08	0.00	
3425.00†	18.968	132.304	3314.02	-410.81	-482.43	530.12	0.00	
3525.00†	18.968	132.304	3408.59	-429.44	-504.31	554.15	0.00	
3625.00†	18.968	132.304	3503.16	-448.07	-526.18	578.19	0.00	
3725.00†	18.968	132.304	3597.73	-466.70	-548.06	602.23	0.00	
3825.00†	18.968	132.304	3692.30	-485.33	-569.94	626.27	0.00	
3925.00†	18.968	132.304	3786.87	-503.96	-591.82	650.31	0.00	
4025.00†	18.968	132.304	3881.44	-522.58	-613.69	674.35	0.00	
4125.00†	18.968	132.304	3976.01	-541.21	-635.57	698.39	0.00	
4225.00†	18.968	132.304	4070.58	-559.84	-657.45	722.43	0.00	
4325.00†	18.968	132.304	4165.15	-578.47	-679.32	746.47	0.00	
4425.00†	18.968	132.304	4259.72	-597.10	-701.20	770.51	0.00	
4525.00†	18.968	132.304	4354.29	-615.73	-723.08	794.55	0.00	
4625.00†	18.968	132.304	4448.86	-634.36	-744.96	818.59	0.00	
4725.00†	18.968	132.304	4543.43	-652.99	-766.83	842.63	0.00	
4825.00†	18.968	132.304	4638.00	-671.62	-788.71	866.67	0.00	
4925.00†	18.968	132.304	4732.57	-690.25	-810.59	890.71	0.00	
5025.00†	18.968	132.304	4827.14	-708.88	-832.46	914.75	0.00	
5125.00†	18.968	132.304	4921.71	-727.51	-854.34	938.79	0.00	
5225.00†	18.968	132.304	5016.28	-746.14	-876.22	962.83	0.00	
5325.00†	18.968	132.304	5110.85	-764.76	-898.10	986.87	0.00	
5425.00†	18.968	132.304	5205.42	-783.39	-919.97	1010.91	0.00	
5525.00†	18.968	132.304	5299.99	-802.02	-941.85	1034.95	0.00	
5625.00†	18.968	132.304	5394.56	-820.65	-963.73	1058.99	0.00	



Planned Wellpath Report

GOETZEL 13N-30A-M REV-A.0 PWP

Page 4 of 8



REFERENCE WELLPATH IDENTIFICATION

Operator	SYNERGY RESOURCES CORPORATION	Slot	SLOT#21 GOETZEL 13N-30A-M (2157'FSL & 2053'FWL, SEC.29)
Area	COLORADO	Well	GOETZEL 13N-30A-M
Field	WELD COUNTY (NAD83,TRUE NORTH)	Wellbore	GOETZEL 13N-30A-M PWB
Facility	SEC.29-T06N-R66W		

WELLPATH DATA (164 stations) † = interpolated/extrapolated station

MD [ft]	Inclination [°]	Azimuth [°]	TVD [ft]	Vert Sect [ft]	North [ft]	East [ft]	DLS [°/100ft]	Comments
5725.00†	18.968	132.304	5489.13	-839.28	-985.60	1083.02	0.00	
5825.00†	18.968	132.304	5583.70	-857.91	-1007.48	1107.06	0.00	
5925.00†	18.968	132.304	5678.27	-876.54	-1029.36	1131.10	0.00	
6025.00†	18.968	132.304	5772.84	-895.17	-1051.24	1155.14	0.00	
6125.00†	18.968	132.304	5867.41	-913.80	-1073.11	1179.18	0.00	
6201.50	18.968	132.304	5939.75	-928.05	-1089.85	1197.57	0.00	End of Tangent
6225.00†	17.732	136.806	5962.06	-932.05	-1095.03	1202.85	8.00	
6325.00†	14.100	163.182	6058.33	-940.66	-1117.83	1216.82	8.00	
6425.00†	14.449	196.020	6155.40	-935.52	-1141.52	1216.90	8.00	
6525.00†	18.555	220.549	6251.38	-916.74	-1165.64	1203.09	8.00	
6625.00†	24.602	234.956	6344.39	-884.67	-1189.72	1175.66	8.00	
6725.00†	31.491	243.675	6432.63	-839.96	-1213.29	1135.14	8.00	
6825.00†	38.774	249.458	6514.38	-783.46	-1235.90	1082.33	8.00	
6925.00†	46.263	253.636	6588.05	-716.27	-1257.10	1018.24	8.00	
7025.00†	53.869	256.874	6652.21	-639.71	-1276.48	944.13	8.00	
7125.00†	61.548	259.534	6705.59	-555.27	-1293.66	861.43	8.00	
7225.00†	69.271	261.832	6747.18	-464.58	-1308.32	771.77	8.00	
7325.00†	77.022	263.905	6776.15	-369.41	-1320.15	676.88	8.00	
7425.00†	84.788	265.851	6791.95	-271.62	-1328.95	578.61	8.00	
7492.07	90.000	267.126	6795.00 ¹	-205.51	-1333.05	511.76	8.00	End of 3D Arc
7525.00†	90.000	267.126	6795.00	-173.06	-1334.70	478.87	0.00	
7625.00†	90.000	267.126	6795.00	-74.54	-1339.71	379.00	0.00	
7725.00†	90.000	267.126	6795.00	23.99	-1344.73	279.12	0.00	
7825.00†	90.000	267.126	6795.00	122.51	-1349.74	179.25	0.00	
7925.00†	90.000	267.126	6795.00	221.04	-1354.76	79.37	0.00	
8025.00†	90.000	267.126	6795.00	319.56	-1359.77	-20.50	0.00	
8125.00†	90.000	267.126	6795.00	418.09	-1364.79	-120.37	0.00	
8225.00†	90.000	267.126	6795.00	516.61	-1369.80	-220.25	0.00	
8325.00†	90.000	267.126	6795.00	615.14	-1374.81	-320.12	0.00	
8425.00†	90.000	267.126	6795.00	713.66	-1379.83	-420.00	0.00	



Planned Wellpath Report

GOETZEL 13N-30A-M REV-A.0 PWP

Page 5 of 8



REFERENCE WELLPATH IDENTIFICATION

Operator	SYNERGY RESOURCES CORPORATION	Slot	SLOT#21 GOETZEL 13N-30A-M (2157'FSL & 2053'FWL, SEC.29)
Area	COLORADO	Well	GOETZEL 13N-30A-M
Field	WELD COUNTY (NAD83,TRUE NORTH)	Wellbore	GOETZEL 13N-30A-M PWB
Facility	SEC.29-T06N-R66W		

WELLPATH DATA (164 stations) † = interpolated/extrapolated station

MD [ft]	Inclination [°]	Azimuth [°]	TVD [ft]	Vert Sect [ft]	North [ft]	East [ft]	DLS [°/100ft]	Comments
8525.00†	90.000	267.126	6795.00	812.19	-1384.84	-519.87	0.00	
8625.00†	90.000	267.126	6795.00	910.71	-1389.86	-619.75	0.00	
8725.00†	90.000	267.126	6795.00	1009.24	-1394.87	-719.62	0.00	
8825.00†	90.000	267.126	6795.00	1107.76	-1399.89	-819.49	0.00	
8925.00†	90.000	267.126	6795.00	1206.29	-1404.90	-919.37	0.00	
9025.00†	90.000	267.126	6795.00	1304.81	-1409.92	-1019.24	0.00	
9125.00†	90.000	267.126	6795.00	1403.34	-1414.93	-1119.12	0.00	
9225.00†	90.000	267.126	6795.00	1501.86	-1419.95	-1218.99	0.00	
9325.00†	90.000	267.126	6795.00	1600.39	-1424.96	-1318.86	0.00	
9425.00†	90.000	267.126	6795.00	1698.91	-1429.98	-1418.74	0.00	
9525.00†	90.000	267.126	6795.00	1797.44	-1434.99	-1518.61	0.00	
9625.00†	90.000	267.126	6795.00	1895.96	-1440.01	-1618.49	0.00	
9725.00†	90.000	267.126	6795.00	1994.49	-1445.02	-1718.36	0.00	
9825.00†	90.000	267.126	6795.00	2093.01	-1450.04	-1818.24	0.00	
9925.00†	90.000	267.126	6795.00	2191.54	-1455.05	-1918.11	0.00	
10025.00†	90.000	267.126	6795.00	2290.06	-1460.07	-2017.98	0.00	
10125.00†	90.000	267.126	6795.00	2388.59	-1465.08	-2117.86	0.00	
10225.00†	90.000	267.126	6795.00	2487.11	-1470.09	-2217.73	0.00	
10325.00†	90.000	267.126	6795.00	2585.64	-1475.11	-2317.61	0.00	
10425.00†	90.000	267.126	6795.00	2684.17	-1480.12	-2417.48	0.00	
10525.00†	90.000	267.126	6795.00	2782.69	-1485.14	-2517.36	0.00	
10625.00†	90.000	267.126	6795.00	2881.22	-1490.15	-2617.23	0.00	
10725.00†	90.000	267.126	6795.00	2979.74	-1495.17	-2717.10	0.00	
10825.00†	90.000	267.126	6795.00	3078.27	-1500.18	-2816.98	0.00	
10925.00†	90.000	267.126	6795.00	3176.79	-1505.20	-2916.85	0.00	
11025.00†	90.000	267.126	6795.00	3275.32	-1510.21	-3016.73	0.00	
11125.00†	90.000	267.126	6795.00	3373.84	-1515.23	-3116.60	0.00	
11225.00†	90.000	267.126	6795.00	3472.37	-1520.24	-3216.47	0.00	
11325.00†	90.000	267.126	6795.00	3570.89	-1525.26	-3316.35	0.00	
11425.00†	90.000	267.126	6795.00	3669.42	-1530.27	-3416.22	0.00	



Planned Wellpath Report

GOETZEL 13N-30A-M REV-A.0 PWP

Page 6 of 8



REFERENCE WELLPATH IDENTIFICATION

Operator	SYNERGY RESOURCES CORPORATION	Slot	SLOT#21 GOETZEL 13N-30A-M (2157'FSL & 2053'FWL, SEC.29)
Area	COLORADO	Well	GOETZEL 13N-30A-M
Field	WELD COUNTY (NAD83,TRUE NORTH)	Wellbore	GOETZEL 13N-30A-M PWB
Facility	SEC.29-T06N-R66W		

WELLPATH DATA (164 stations) † = interpolated/extrapolated station

MD [ft]	Inclination [°]	Azimuth [°]	TVD [ft]	Vert Sect [ft]	North [ft]	East [ft]	DLS [°/100ft]	Comments
11525.00†	90.000	267.126	6795.00	3767.94	-1535.29	-3516.10	0.00	
11625.00†	90.000	267.126	6795.00	3866.47	-1540.30	-3615.97	0.00	
11725.00†	90.000	267.126	6795.00	3964.99	-1545.32	-3715.85	0.00	
11825.00†	90.000	267.126	6795.00	4063.52	-1550.33	-3815.72	0.00	
11925.00†	90.000	267.126	6795.00	4162.04	-1555.35	-3915.59	0.00	
12025.00†	90.000	267.126	6795.00	4260.57	-1560.36	-4015.47	0.00	
12125.00†	90.000	267.126	6795.00	4359.09	-1565.37	-4115.34	0.00	
12225.00†	90.000	267.126	6795.00	4457.62	-1570.39	-4215.22	0.00	
12325.00†	90.000	267.126	6795.00	4556.14	-1575.40	-4315.09	0.00	
12425.00†	90.000	267.126	6795.00	4654.67	-1580.42	-4414.96	0.00	
12525.00†	90.000	267.126	6795.00	4753.19	-1585.43	-4514.84	0.00	
12625.00†	90.000	267.126	6795.00	4851.72	-1590.45	-4614.71	0.00	
12725.00†	90.000	267.126	6795.00	4950.24	-1595.46	-4714.59	0.00	
12825.00†	90.000	267.126	6795.00	5048.77	-1600.48	-4814.46	0.00	
12925.00†	90.000	267.126	6795.00	5147.29	-1605.49	-4914.34	0.00	
13025.00†	90.000	267.126	6795.00	5245.82	-1610.51	-5014.21	0.00	
13125.00†	90.000	267.126	6795.00	5344.34	-1615.52	-5114.08	0.00	
13225.00†	90.000	267.126	6795.00	5442.87	-1620.54	-5213.96	0.00	
13325.00†	90.000	267.126	6795.00	5541.39	-1625.55	-5313.83	0.00	
13425.00†	90.000	267.126	6795.00	5639.92	-1630.57	-5413.71	0.00	
13525.00†	90.000	267.126	6795.00	5738.44	-1635.58	-5513.58	0.00	
13625.00†	90.000	267.126	6795.00	5836.97	-1640.60	-5613.45	0.00	
13725.00†	90.000	267.126	6795.00	5935.49	-1645.61	-5713.33	0.00	
13825.00†	90.000	267.126	6795.00	6034.02	-1650.63	-5813.20	0.00	
13925.00†	90.000	267.126	6795.00	6132.55	-1655.64	-5913.08	0.00	
14025.00†	90.000	267.126	6795.00	6231.07	-1660.65	-6012.95	0.00	
14125.00†	90.000	267.126	6795.00	6329.60	-1665.67	-6112.83	0.00	
14225.00†	90.000	267.126	6795.00	6428.12	-1670.68	-6212.70	0.00	
14325.00†	90.000	267.126	6795.00	6526.65	-1675.70	-6312.57	0.00	
14425.00†	90.000	267.126	6795.00	6625.17	-1680.71	-6412.45	0.00	



Planned Wellpath Report

GOETZEL 13N-30A-M REV-A.0 PWP

Page 7 of 8



REFERENCE WELLPATH IDENTIFICATION

Operator	SYNERGY RESOURCES CORPORATION	Slot	SLOT#21 GOETZEL 13N-30A-M (2157'FSL & 2053'FWL, SEC.29)
Area	COLORADO	Well	GOETZEL 13N-30A-M
Field	WELD COUNTY (NAD83,TRUE NORTH)	Wellbore	GOETZEL 13N-30A-M PWB
Facility	SEC.29-T06N-R66W		

WELLPATH DATA (164 stations) † = interpolated/extrapolated station

MD [ft]	Inclination [°]	Azimuth [°]	TVD [ft]	Vert Sect [ft]	North [ft]	East [ft]	DLS [°/100ft]	Comments
14525.00†	90.000	267.126	6795.00	6723.70	-1685.73	-6512.32	0.00	
14625.00†	90.000	267.126	6795.00	6822.22	-1690.74	-6612.20	0.00	
14725.00†	90.000	267.126	6795.00	6920.75	-1695.76	-6712.07	0.00	
14825.00†	90.000	267.126	6795.00	7019.27	-1700.77	-6811.94	0.00	
14925.00†	90.000	267.126	6795.00	7117.80	-1705.79	-6911.82	0.00	
15025.00†	90.000	267.126	6795.00	7216.32	-1710.80	-7011.69	0.00	
15125.00†	90.000	267.126	6795.00	7314.85	-1715.82	-7111.57	0.00	
15225.00†	90.000	267.126	6795.00	7413.37	-1720.83	-7211.44	0.00	
15325.00†	90.000	267.126	6795.00	7511.90	-1725.85	-7311.32	0.00	
15425.00†	90.000	267.126	6795.00	7610.42	-1730.86	-7411.19	0.00	
15525.00†	90.000	267.126	6795.00	7708.95	-1735.88	-7511.06	0.00	
15625.00†	90.000	267.126	6795.00	7807.47	-1740.89	-7610.94	0.00	
15725.00†	90.000	267.126	6795.00	7906.00	-1745.91	-7710.81	0.00	
15749.99	90.000	267.126	6795.00 ²	7930.62	-1747.16	-7735.77	0.00	End of Tangent

HOLE & CASING SECTIONS - Ref Wellbore: GOETZEL 13N-30A-M PWB Ref Wellpath: GOETZEL 13N-30A-M REV-A.0 PWP

String/Diameter	Start MD [ft]	End MD [ft]	Interval [ft]	Start TVD [ft]	End TVD [ft]	Start N/S [ft]	Start E/W [ft]	End N/S [ft]	End E/W [ft]
13.5in Open Hole	25.00	1700.00	1675.00	25.00	1682.68	0.00	0.00	-105.05	115.43
8.5in Open Hole	1700.00	15749.00	14049.00	1682.68	6795.00	-105.05	115.43	-1747.11	-7734.78



Planned Wellpath Report

GOETZEL 13N-30A-M REV-A.0 PWP

Page 8 of 8



REFERENCE WELLPATH IDENTIFICATION

Operator	SYNERGY RESOURCES CORPORATION	Slot	SLOT#21 GOETZEL 13N-30A-M (2157'FSL & 2053'FWL, SEC.29)
Area	COLORADO	Well	GOETZEL 13N-30A-M
Field	WELD COUNTY (NAD83,TRUE NORTH)	Wellbore	GOETZEL 13N-30A-M PWB
Facility	SEC.29-T06N-R66W		

TARGETS

Name	MD [ft]	TVD [ft]	North [ft]	East [ft]	Grid East [US ft]	Grid North [US ft]	Latitude	Longitude	Shape
SEC.29-T06N-R66W NORTHERN		9.00	1342.50	822.53	3194449.66	1411671.99	40°27'40.817"N	104°48'04.259"W	polygon
SEC.29-T06N-R66W SOUTHERN		9.00	1342.50	822.53	3194449.66	1411671.99	40°27'40.817"N	104°48'04.259"W	polygon
SEC.30-T06N-R66W NORTHERN		9.00	1342.50	822.53	3194449.66	1411671.99	40°27'40.817"N	104°48'04.259"W	polygon
SEC.30-T06N-R66W SOUTHERN		9.00	1342.50	822.53	3194449.66	1411671.99	40°27'40.817"N	104°48'04.259"W	polygon
GOETZEL 13N-30A-M BHL ON PLAT (774'FSL & 762'FWL SEC.30)		6795.00	-1713.83	-7123.77	3186527.90	1408553.52	40°27'10.606"N	104°49'47.050"W	circle
2) GOETZEL 13N-30A-M BHL REV-1 (774'FSL & 150'FWL SEC.30)	15749.99	6795.00	-1747.16	-7735.77	3185916.20	1408515.39	40°27'10.274"N	104°49'54.966"W	point
1) GOETZEL 13N-30A-M TOP OF PROD REV-1 (811'FSL & 2571'FWL SEC.29)	7492.07	6795.00	-1333.05	511.76	3194159.91	1408994.19	40°27'14.378"N	104°48'08.280"W	circle

SURVEY PROGRAM - Ref Wellbore: GOETZEL 13N-30A-M PWB Ref Wellpath: GOETZEL 13N-30A-M REV-A.0 PWP

Start MD [ft]	End MD [ft]	Positional Uncertainty Model	Log Name/Comment	Wellbore
25.00	1700.00	Custom BHI NaviTrak (Standard Rotating+Axial Corr) (Rockies 0.03Gt model)		GOETZEL 13N-30A-M PWB
1700.00	15749.99	Custom BHI AutoTrak Curve (IFR1, Short) (Rockies 0.03Gt model)		GOETZEL 13N-30A-M PWB