

SYNERGY RESOURCES CORPORATION

Location: COLORADO Slot: SLOT#22 GOETZEL 13C-30-M (2137'FSL & 2053'FWL, SEC.29)
Field: WELD COUNTY (NAD83,TRUE NORTH) Well: GOETZEL 13C-30-M
Facility: SEC.29-T06N-R66W Wellbore: GOETZEL 13C-30-M PWB

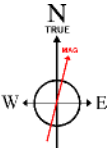
Plot reference wellpath is GOETZEL 13C-30-M REV-A.0 PWP	Grid System: NAD83 / Lambert Colorado SP, Northern Zone (501), US feet
True vertical depths are referenced to H&P 562 (25) (RKB)	* = Wellpath was transformed from a different geodetic datum
Measured depths are referenced to H&P 562 (25) (RKB)	North Reference: True north
H&P 562 (25) (RKB) to Mean Sea Level: 4757 feet	Scale: True distance
Mean Sea Level to Mud line (At Slot: SLOT#22 GOETZEL 13C-30-M (2137'FSL & 2053'FWL, SEC.29): 0 feet	Depths are in feet
Coordinates are in feet referenced to Slot	Created by: wajugram on 2017-02-27
	Database: WA_DEN_Denver_Defn

Location Information

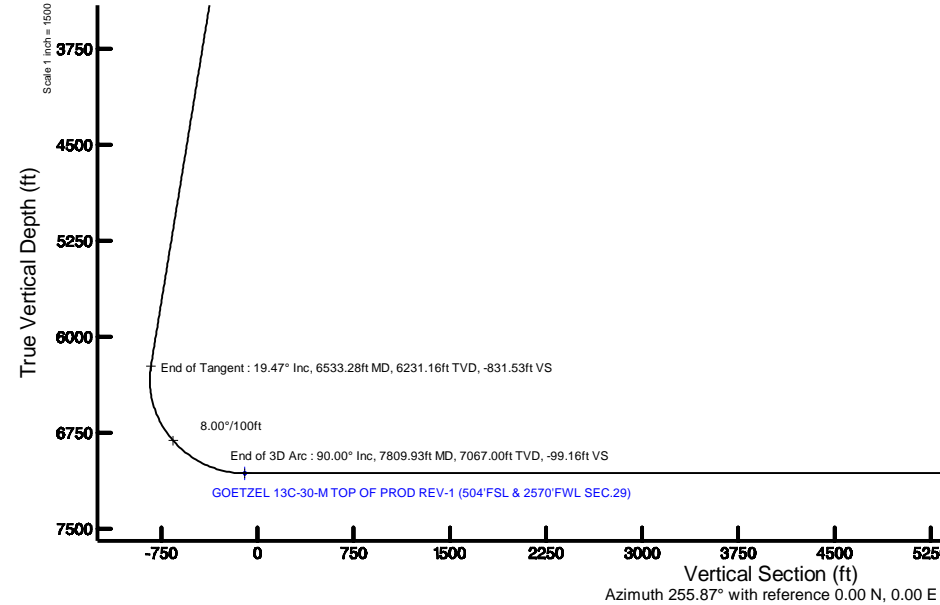
Facility Name			Grid East (US ft)	Grid North (US ft)	Latitude	Longitude
SEC.29-T06N-R66W			3194449.646	1411672.008	40°27'40.817"N	104°48'04.259"W
Slot	Local N (ft)	Local E (ft)	Grid East (US ft)	Grid North (US ft)	Latitude	Longitude
SLOT#22 GOETZEL 13C-30-M (2137'FSL & 2053'FWL, SEC.29)	-1362.53	-622.56	3193637.878	1410303.093	40°27'27.353"N	104°48'14.900"W
H&P 562 (25) (RKB) to Mud line (At Slot: SLOT#22 GOETZEL 13C-30-M (2137'FSL & 2053'FWL, SEC.29))					4757ft	
Mean Sea Level to Mud line (At Slot: SLOT#22 GOETZEL 13C-30-M (2137'FSL & 2053'FWL, SEC.29))					0ft	
H&P 562 (25) (RKB) to Mean Sea Level					4757ft	

Tie-On Position

MD (ft)	Inc (°)	Az (°)	TVD (ft)	Local N (ft)	Local E (ft)	Grid East (US ft)	Grid North (US ft)	Latitude	Longitude
25.00	0.000	138.629	25.00	0.00	0.00	3193637.88	1410303.09	40°27'27.353"N	104°48'14.900"W



BGGM (1900.0 to 2018.0) Dip: 66.92° Field: 52499.6 nT
Magnetic North is 8.43 degrees East of True North (at 2/22/2017)
To correct azimuth from Magnetic to True add 8.43 degrees



Well Profile Data

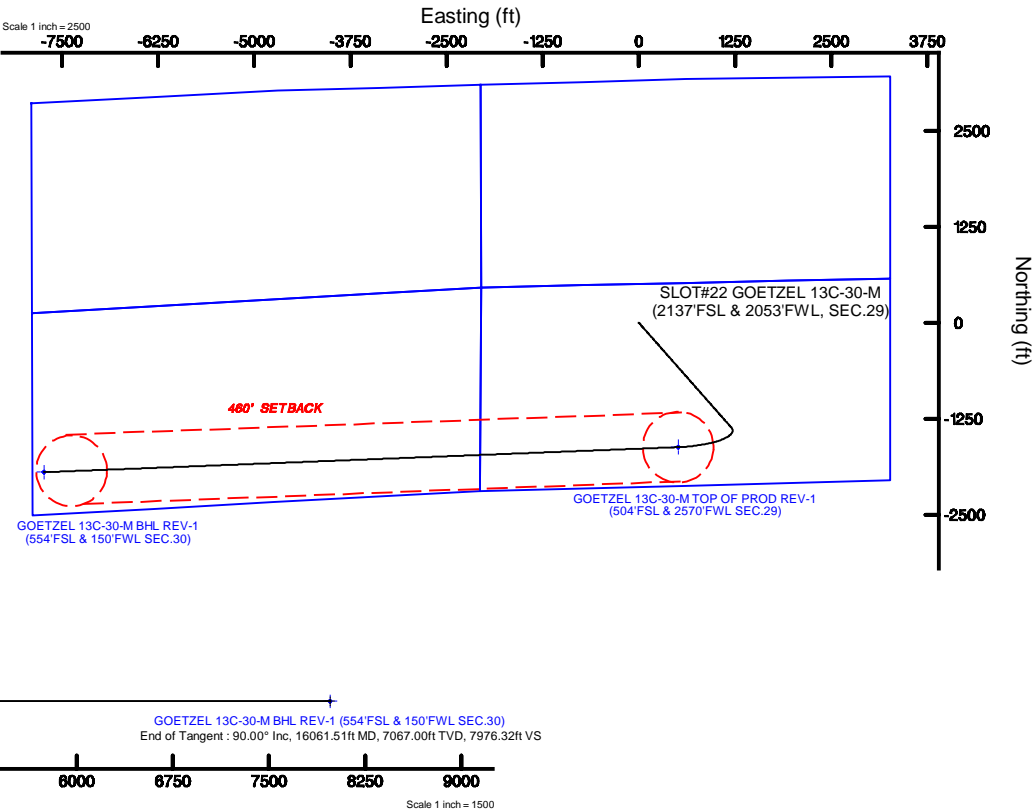
Design Comment	MD (ft)	Inc (°)	Az (°)	TVD (ft)	Local N (ft)	Local E (ft)	DLS (°/100ft)	VS (ft)
Tie On	25.00	0.000	138.629	25.00	0.00	0.00	0.00	0.00
End of Tangent	600.00	0.000	138.629	600.00	0.00	0.00	0.00	0.00
End of Build	1573.29	19.466	138.629	1554.67	-122.88	108.23	2.00	-74.95
End of Tangent	6533.28	19.466	138.629	6231.16	-1363.29	1200.66	0.00	-831.53
End of 3D Arc	7809.93	90.000	267.729	7067.00	-1620.13	510.10	8.00	-99.16
End of Tangent	16061.51	90.000	267.729	7067.00	-1947.17	-7735.00	0.00	7976.32

Survey Program

Start MD (ft)	End MD (ft)	Tool	Model	Log Name/Comment	Wellbore
25.00	1700.00	BHI NewTrak	Custom BHI NewTrak (Standard Rotating+Axial Cor) (Rockies 0.03Gt model)		GOETZEL 13C-30-M PWB
1700.00	16061.51	BHI AutoTrak Curve	Custom BHI AutoTrak Curve (IFR1, Short) (Rockies 0.03Gt model)		GOETZEL 13C-30-M PWB

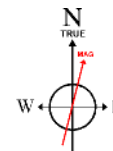
Targets

Name	MD (ft)	TVD (ft)	Local N (ft)	Local E (ft)	Grid East (US ft)	Grid North (US ft)	Latitude	Longitude
SEC.29-T06N-RE66W-NORTHERN	9.00	1362.53	822.53		3194449.66	1411671.99	40°27'40.817"N	104°48'04.259"W
SEC.29-T06N-RE66W-SOUTHERN	9.00	1362.53	822.53		3194449.66	1411671.99	40°27'40.817"N	104°48'04.259"W
SEC.30-T06N-RE66W-NORTHERN	9.00	1362.53	822.53		3194449.66	1411671.99	40°27'40.817"N	104°48'04.259"W
SEC.30-T06N-RE66W-SOUTHERN	9.00	1362.53	822.53		3194449.66	1411671.99	40°27'40.817"N	104°48'04.259"W
GOETZEL 13C-30-M-BHL ON PLAT (554'FSL & 510'FWL SEC.30)	7067.00	-1927.60	-7375.15		3186278.37	1408317.75	40°27'08.294"N	104°49'50.300"W
GOETZEL 13C-30-M-BHL REV-1 (554'FSL & 150'FWL SEC.30)	16061.51	7067.00	-1947.17	-7735.00	3185918.69	1408295.36	40°27'08.100"N	104°49'54.950"W
GOETZEL 13C-30-M TOP OF PROD REV-1 (504'FSL & 2570'FWL SEC.29)	7809.93	7067.00	-1620.13	510.10	3194160.65	1408687.08	40°27'11.344"N	104°48'08.302"W



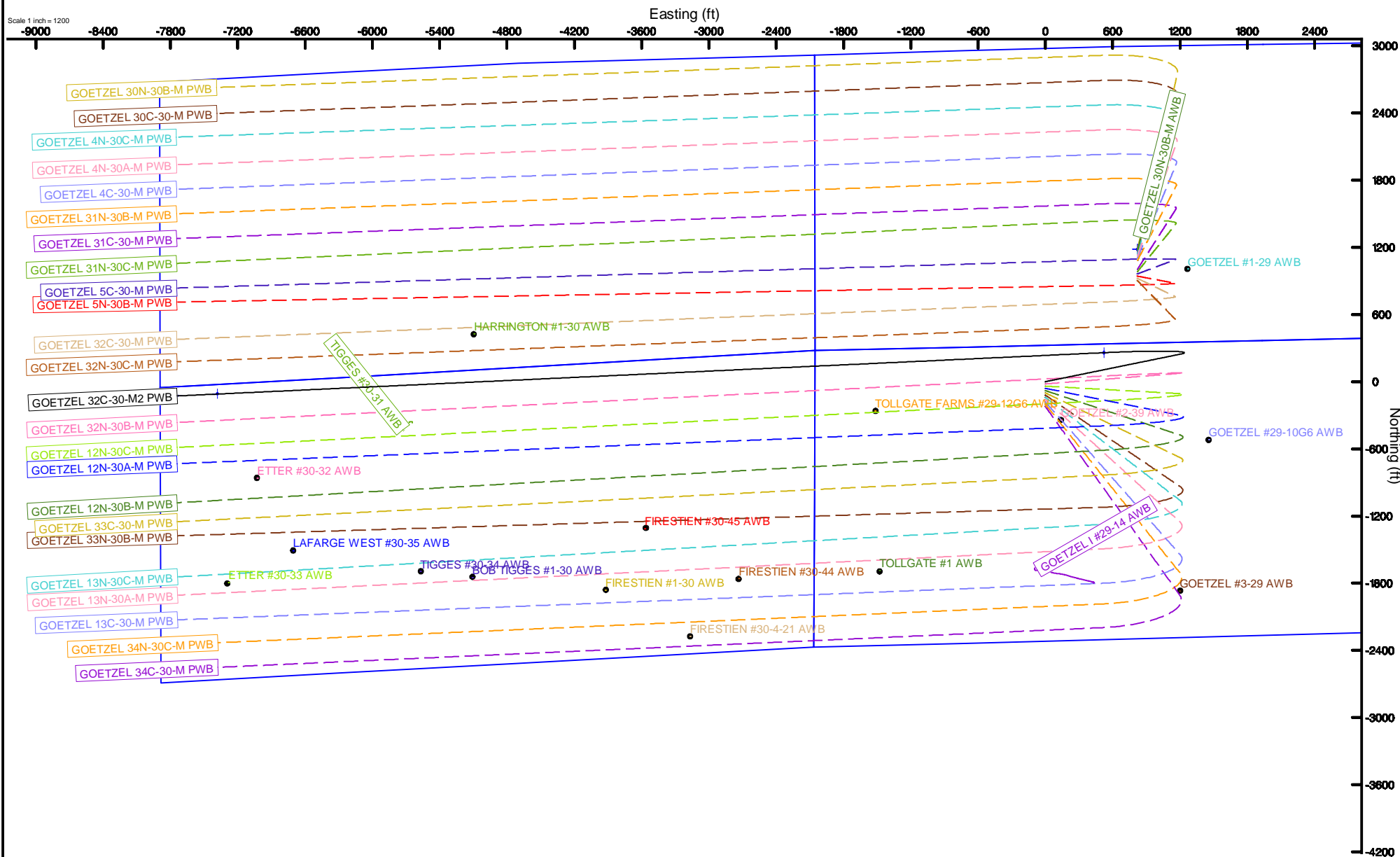
SYNERGY RESOURCES CORPORATION

Location: COLORADO Slot: SLOT#13 GOETZEL 32C-30-M2 (2317FSL & 2053FWL SEC.29)
Field: WELD COUNTY (NAD83, TRUE NORTH) Well: GOETZEL 32C-30-M2
Facility: SEC.29-T06N-R66W Wellbore: GOETZEL 32C-30-M2 PWB



BGGM (1900.0 to 2018.0) Dip: 66.92° Field: 52499.6 nT
Magnetic North is 8.43 degrees East of True North (at 2/22/2017)

To correct azimuth from Magnetic to True add 8.43 degrees



GOETZEL_13C-30-M_REV-A.0_PWP.las

~VERSION INFORMATION

VERS. 2.0 : CWLS LOG ASCII STANDARD-VERSION 2.0

WRAP. NO : ASCII DATA SECTION CONTAINS ONE ROW PER WELLPATH STATION

~WELL INFORMATION

#MNEM	.UNITS	DATA	:DESCRIPTION
#----	.-----	----	:-----
STRT	.ft	0.00	:START MD
STOP	.ft	16061.51	:STOP MD
STEP	.ft	0.0	:STEP (non-uniform increment)
NULL	.	-999.99	:NULL
COMP	.	SYNERGY RESOURCES CORPORATION	:OPERATOR
WELL	.	GOETZEL 13C-30-M	:WELL
FLD	.	WELD COUNTY (NAD83,TRUE NORTH)	:FIELD
LOC	.	COLORADO	:AREA (aka: Location)
CNTY	.	N/A	:COUNTY
STAT	.	N/A	:STATE
CTRY	.	N/A	:COUNTRY
SRVC	.	Baker Hughes	:CONTRACTOR
DATE	.	02/23/2017	:LOG REV DATE
API	.		:API NUMBER

~OTHER INFORMATION

#Software: wellArchitect(R) Version 5.0

#MNEM	.UNITS	DATA	:DESCRIPTION
#----	.-----	----	:-----
WPTYPE	.	PLANNED WELLPATH	:WELLPATH TYPE
FACILITY	.	SEC.29-T06N-R66W	:FACILITY
SLOT	.	SLOT#22 GOETZEL 13C-30-M (2137'FSL & 2053'FWL, SEC.29):SLOT	:SLOT
WELLBORE	.	GOETZEL 13C-30-M PWB	:WELLBORE
WELLPATH	.	GOETZEL 13C-30-M REV-A.0 PWP	:WELLPATH
MDREFPT	.	H&P 562 (25') (RKB)	:MD REFERENCE POINT
TVDREFPT	.	H&P 562 (25') (RKB)	:TVD REFERENCE POINT
LCLREFPT	.	Slot	:LOCAL COORDINATE REFERENCE PT
VSAZIMUTH.deg		255.87	:VERTICAL SECTION AZIMUTH
VSORIGN .ft		0.00	:VERTICAL SECTION ORIGIN NORTH
VSORIGE .ft		0.00	:VERTICAL SECTION ORIGIN EAST

~CURVE (WELLPATH) INFORMATION

#MNEM	.UNITS	:DESCRIPTION
#----	.-----	:-----
DEPT	.ft	:MEASURED DEPTH
INC	.deg	:INCLINATION
AZI	.deg	:AZIMUTH

GOETZEL_13C-30-M_REV-A.0_PWP.las

TVD .ft :TRUE VERTICAL DEPTH
 SECT .ft :CROSS SECTION (CURTAIN/VERTICAL)
 LOCALN .ft :LOCAL NORTH
 LOCALE .ft :LOCAL EAST
 LAT .deg :LATITUDE
 LONG .deg :LONGITUDE
 DLS .deg/100ft :DOGLEG SEVERITY

~ASCII DATA

0.00	0.00	138.63	0.00	0.00	0.00	0.00	40.4575981	-104.8041389	0.00
25.00	0.00	138.63	25.00	0.00	0.00	0.00	40.4575981	-104.8041389	0.00
125.00	0.00	138.63	125.00	0.00	0.00	0.00	40.4575981	-104.8041389	0.00
225.00	0.00	138.63	225.00	0.00	0.00	0.00	40.4575981	-104.8041389	0.00
325.00	0.00	138.63	325.00	0.00	0.00	0.00	40.4575981	-104.8041389	0.00
425.00	0.00	138.63	425.00	0.00	0.00	0.00	40.4575981	-104.8041389	0.00
525.00	0.00	138.63	525.00	0.00	0.00	0.00	40.4575981	-104.8041389	0.00
600.00	0.00	138.63	600.00	0.00	0.00	0.00	40.4575981	-104.8041389	0.00
625.00	0.50	138.63	625.00	-0.05	-0.08	0.07	40.4575978	-104.8041386	2.00
725.00	2.50	138.63	724.96	-1.25	-2.05	1.80	40.4575924	-104.8041324	2.00
825.00	4.50	138.63	824.77	-4.04	-6.63	5.84	40.4575799	-104.8041179	2.00
925.00	6.50	138.63	924.30	-8.43	-13.82	12.17	40.4575601	-104.8040952	2.00
1025.00	8.50	138.63	1023.44	-14.40	-23.61	20.80	40.4575332	-104.8040642	2.00
1125.00	10.50	138.63	1122.07	-21.96	-36.00	31.71	40.4574992	-104.8040250	2.00
1225.00	12.50	138.63	1220.05	-31.08	-50.96	44.88	40.4574582	-104.8039776	2.00
1325.00	14.50	138.63	1317.29	-41.77	-68.48	60.31	40.4574101	-104.8039222	2.00
1425.00	16.50	138.63	1413.64	-54.00	-88.53	77.97	40.4573550	-104.8038587	2.00
1525.00	18.50	138.63	1509.01	-67.76	-111.10	97.85	40.4572931	-104.8037873	2.00
1573.29	19.47	138.63	1554.67	-74.95	-122.88	108.23	40.4572608	-104.8037500	2.00
1625.00	19.47	138.63	1603.43	-82.84	-135.82	119.62	40.4572253	-104.8037091	0.00
1725.00	19.47	138.63	1697.71	-98.10	-160.83	141.64	40.4571566	-104.8036299	0.00
1825.00	19.47	138.63	1792.00	-113.35	-185.83	163.67	40.4570880	-104.8035508	0.00
1925.00	19.47	138.63	1886.28	-128.60	-210.84	185.69	40.4570193	-104.8034716	0.00
2025.00	19.47	138.63	1980.56	-143.86	-235.85	207.72	40.4569507	-104.8033925	0.00
2125.00	19.47	138.63	2074.85	-159.11	-260.86	229.74	40.4568820	-104.8033133	0.00
2225.00	19.47	138.63	2169.13	-174.36	-285.87	251.77	40.4568134	-104.8032342	0.00
2325.00	19.47	138.63	2263.42	-189.62	-310.87	273.79	40.4567447	-104.8031550	0.00
2425.00	19.47	138.63	2357.70	-204.87	-335.88	295.82	40.4566761	-104.8030759	0.00
2525.00	19.47	138.63	2451.99	-220.12	-360.89	317.84	40.4566075	-104.8029968	0.00
2625.00	19.47	138.63	2546.27	-235.38	-385.90	339.87	40.4565388	-104.8029176	0.00
2725.00	19.47	138.63	2640.55	-250.63	-410.91	361.89	40.4564702	-104.8028385	0.00
2825.00	19.47	138.63	2734.84	-265.89	-435.92	383.92	40.4564015	-104.8027593	0.00
2925.00	19.47	138.63	2829.12	-281.14	-460.92	405.94	40.4563329	-104.8026802	0.00
3025.00	19.47	138.63	2923.41	-296.39	-485.93	427.97	40.4562642	-104.8026010	0.00
3125.00	19.47	138.63	3017.69	-311.65	-510.94	449.99	40.4561956	-104.8025219	0.00

GOETZEL_13C-30-M_REV-A.0_PWP.las

3225.00	19.47	138.63	3111.97	-326.90	-535.95	472.02	40.4561269	-104.8024428	0.00
3325.00	19.47	138.63	3206.26	-342.15	-560.96	494.04	40.4560583	-104.8023636	0.00
3425.00	19.47	138.63	3300.54	-357.41	-585.96	516.07	40.4559896	-104.8022845	0.00
3525.00	19.47	138.63	3394.83	-372.66	-610.97	538.09	40.4559210	-104.8022053	0.00
3625.00	19.47	138.63	3489.11	-387.91	-635.98	560.12	40.4558524	-104.8021262	0.00
3725.00	19.47	138.63	3583.39	-403.17	-660.99	582.14	40.4557837	-104.8020471	0.00
3825.00	19.47	138.63	3677.68	-418.42	-686.00	604.17	40.4557151	-104.8019679	0.00
3925.00	19.47	138.63	3771.96	-433.68	-711.01	626.19	40.4556464	-104.8018888	0.00
4025.00	19.47	138.63	3866.25	-448.93	-736.01	648.22	40.4555778	-104.8018096	0.00
4125.00	19.47	138.63	3960.53	-464.18	-761.02	670.24	40.4555091	-104.8017305	0.00
4225.00	19.47	138.63	4054.82	-479.44	-786.03	692.27	40.4554405	-104.8016514	0.00
4325.00	19.47	138.63	4149.10	-494.69	-811.04	714.29	40.4553718	-104.8015722	0.00
4425.00	19.47	138.63	4243.38	-509.94	-836.05	736.31	40.4553032	-104.8014931	0.00
4525.00	19.47	138.63	4337.67	-525.20	-861.05	758.34	40.4552345	-104.8014139	0.00
4625.00	19.47	138.63	4431.95	-540.45	-886.06	780.36	40.4551659	-104.8013348	0.00
4725.00	19.47	138.63	4526.24	-555.70	-911.07	802.39	40.4550972	-104.8012557	0.00
4825.00	19.47	138.63	4620.52	-570.96	-936.08	824.41	40.4550286	-104.8011765	0.00
4925.00	19.47	138.63	4714.80	-586.21	-961.09	846.44	40.4549600	-104.8010974	0.00
5025.00	19.47	138.63	4809.09	-601.47	-986.10	868.46	40.4548913	-104.8010182	0.00
5125.00	19.47	138.63	4903.37	-616.72	-1011.10	890.49	40.4548227	-104.8009391	0.00
5225.00	19.47	138.63	4997.66	-631.97	-1036.11	912.51	40.4547540	-104.8008600	0.00
5325.00	19.47	138.63	5091.94	-647.23	-1061.12	934.54	40.4546854	-104.8007808	0.00
5425.00	19.47	138.63	5186.22	-662.48	-1086.13	956.56	40.4546167	-104.8007017	0.00
5525.00	19.47	138.63	5280.51	-677.73	-1111.14	978.59	40.4545481	-104.8006225	0.00
5625.00	19.47	138.63	5374.79	-692.99	-1136.14	1000.61	40.4544794	-104.8005434	0.00
5725.00	19.47	138.63	5469.08	-708.24	-1161.15	1022.64	40.4544108	-104.8004643	0.00
5825.00	19.47	138.63	5563.36	-723.49	-1186.16	1044.66	40.4543421	-104.8003851	0.00
5925.00	19.47	138.63	5657.64	-738.75	-1211.17	1066.69	40.4542735	-104.8003060	0.00
6025.00	19.47	138.63	5751.93	-754.00	-1236.18	1088.71	40.4542048	-104.8002268	0.00
6125.00	19.47	138.63	5846.21	-769.26	-1261.19	1110.74	40.4541362	-104.8001477	0.00
6225.00	19.47	138.63	5940.50	-784.51	-1286.19	1132.76	40.4540675	-104.8000686	0.00
6325.00	19.47	138.63	6034.78	-799.76	-1311.20	1154.79	40.4539989	-104.7999894	0.00
6425.00	19.47	138.63	6129.07	-815.02	-1336.21	1176.81	40.4539303	-104.7999103	0.00
6525.00	19.47	138.63	6223.35	-830.27	-1361.22	1198.84	40.4538616	-104.7998312	0.00
6533.28	19.47	138.63	6231.16	-831.53	-1363.29	1200.66	40.4538559	-104.7998246	0.00
6625.00	16.05	160.14	6318.59	-839.81	-1386.72	1215.09	40.4537916	-104.7997728	8.00
6725.00	15.66	189.68	6414.94	-835.73	-1413.07	1217.52	40.4537193	-104.7997640	8.00
6825.00	18.92	214.56	6510.54	-818.08	-1439.77	1206.04	40.4536460	-104.7998053	8.00
6925.00	24.40	230.52	6603.52	-787.19	-1466.29	1180.86	40.4535732	-104.7998958	8.00
7025.00	30.94	240.50	6692.09	-743.67	-1492.13	1142.49	40.4535023	-104.8000337	8.00
7125.00	38.00	247.18	6774.50	-688.36	-1516.77	1091.66	40.4534347	-104.8002163	8.00
7225.00	45.34	252.00	6849.17	-622.34	-1539.73	1029.36	40.4533716	-104.8004402	8.00
7325.00	52.83	255.72	6914.63	-546.89	-1560.58	956.81	40.4533144	-104.8007009	8.00
7425.00	60.41	258.77	6969.62	-463.49	-1578.90	875.41	40.4532641	-104.8009933	8.00

GOETZEL_13C-30-M_REV-A.0_PWP.las

7525.00	68.06	261.39	7013.06	-373.75	-1594.34	786.77	40.4532217	-104.8013119	8.00
7625.00	75.74	263.73	7044.10	-279.43	-1606.60	692.59	40.4531881	-104.8016503	8.00
7725.00	83.45	265.92	7062.15	-182.36	-1615.44	594.71	40.4531639	-104.8020020	8.00
7809.93	90.00	267.73	7067.00	-99.16	-1620.13	510.10	40.4531510	-104.8023060	8.00
7825.00	90.00	267.73	7067.00	-84.41	-1620.72	495.04	40.4531494	-104.8023601	0.00
7925.00	90.00	267.73	7067.00	13.45	-1624.69	395.12	40.4531385	-104.8027191	0.00
8025.00	90.00	267.73	7067.00	111.32	-1628.65	295.20	40.4531276	-104.8030782	0.00
8125.00	90.00	267.73	7067.00	209.18	-1632.61	195.28	40.4531167	-104.8034372	0.00
8225.00	90.00	267.73	7067.00	307.05	-1636.58	95.35	40.4531059	-104.8037963	0.00
8325.00	90.00	267.73	7067.00	404.92	-1640.54	-4.57	40.4530950	-104.8041553	0.00
8425.00	90.00	267.73	7067.00	502.78	-1644.50	-104.49	40.4530841	-104.8045143	0.00
8525.00	90.00	267.73	7067.00	600.65	-1648.47	-204.41	40.4530732	-104.8048734	0.00
8625.00	90.00	267.73	7067.00	698.51	-1652.43	-304.33	40.4530623	-104.8052324	0.00
8725.00	90.00	267.73	7067.00	796.38	-1656.39	-404.25	40.4530515	-104.8055915	0.00
8825.00	90.00	267.73	7067.00	894.24	-1660.36	-504.17	40.4530406	-104.8059505	0.00
8925.00	90.00	267.73	7067.00	992.11	-1664.32	-604.10	40.4530297	-104.8063095	0.00
9025.00	90.00	267.73	7067.00	1089.98	-1668.28	-704.02	40.4530188	-104.8066686	0.00
9125.00	90.00	267.73	7067.00	1187.84	-1672.25	-803.94	40.4530079	-104.8070276	0.00
9225.00	90.00	267.73	7067.00	1285.71	-1676.21	-903.86	40.4529970	-104.8073866	0.00
9325.00	90.00	267.73	7067.00	1383.57	-1680.17	-1003.78	40.4529861	-104.8077457	0.00
9425.00	90.00	267.73	7067.00	1481.44	-1684.14	-1103.70	40.4529752	-104.8081047	0.00
9525.00	90.00	267.73	7067.00	1579.31	-1688.10	-1203.62	40.4529644	-104.8084638	0.00
9625.00	90.00	267.73	7067.00	1677.17	-1692.06	-1303.55	40.4529535	-104.8088228	0.00
9725.00	90.00	267.73	7067.00	1775.04	-1696.03	-1403.47	40.4529426	-104.8091818	0.00
9825.00	90.00	267.73	7067.00	1872.90	-1699.99	-1503.39	40.4529317	-104.8095409	0.00
9925.00	90.00	267.73	7067.00	1970.77	-1703.95	-1603.31	40.4529208	-104.8098999	0.00
10025.00	90.00	267.73	7067.00	2068.64	-1707.92	-1703.23	40.4529099	-104.8102589	0.00
10125.00	90.00	267.73	7067.00	2166.50	-1711.88	-1803.15	40.4528990	-104.8106180	0.00
10225.00	90.00	267.73	7067.00	2264.37	-1715.84	-1903.07	40.4528881	-104.8109770	0.00
10325.00	90.00	267.73	7067.00	2362.23	-1719.81	-2003.00	40.4528772	-104.8113360	0.00
10425.00	90.00	267.73	7067.00	2460.10	-1723.77	-2102.92	40.4528663	-104.8116951	0.00
10525.00	90.00	267.73	7067.00	2557.96	-1727.73	-2202.84	40.4528554	-104.8120541	0.00
10625.00	90.00	267.73	7067.00	2655.83	-1731.70	-2302.76	40.4528445	-104.8124131	0.00
10725.00	90.00	267.73	7067.00	2753.70	-1735.66	-2402.68	40.4528336	-104.8127722	0.00
10825.00	90.00	267.73	7067.00	2851.56	-1739.62	-2502.60	40.4528227	-104.8131312	0.00
10925.00	90.00	267.73	7067.00	2949.43	-1743.59	-2602.52	40.4528118	-104.8134903	0.00
11025.00	90.00	267.73	7067.00	3047.29	-1747.55	-2702.45	40.4528008	-104.8138493	0.00
11125.00	90.00	267.73	7067.00	3145.16	-1751.51	-2802.37	40.4527899	-104.8142083	0.00
11225.00	90.00	267.73	7067.00	3243.03	-1755.48	-2902.29	40.4527790	-104.8145674	0.00
11325.00	90.00	267.73	7067.00	3340.89	-1759.44	-3002.21	40.4527681	-104.8149264	0.00
11425.00	90.00	267.73	7067.00	3438.76	-1763.41	-3102.13	40.4527572	-104.8152854	0.00
11525.00	90.00	267.73	7067.00	3536.62	-1767.37	-3202.05	40.4527463	-104.8156445	0.00
11625.00	90.00	267.73	7067.00	3634.49	-1771.33	-3301.97	40.4527354	-104.8160035	0.00
11725.00	90.00	267.73	7067.00	3732.36	-1775.30	-3401.90	40.4527245	-104.8163625	0.00

GOETZEL_13C-30-M_REV-A.0_PWP.las

11825.00	90.00	267.73	7067.00	3830.22	-1779.26	-3501.82	40.4527135	-104.8167216	0.00
11925.00	90.00	267.73	7067.00	3928.09	-1783.22	-3601.74	40.4527026	-104.8170806	0.00
12025.00	90.00	267.73	7067.00	4025.95	-1787.19	-3701.66	40.4526917	-104.8174396	0.00
12125.00	90.00	267.73	7067.00	4123.82	-1791.15	-3801.58	40.4526808	-104.8177987	0.00
12225.00	90.00	267.73	7067.00	4221.68	-1795.11	-3901.50	40.4526699	-104.8181577	0.00
12325.00	90.00	267.73	7067.00	4319.55	-1799.08	-4001.42	40.4526589	-104.8185167	0.00
12425.00	90.00	267.73	7067.00	4417.42	-1803.04	-4101.35	40.4526480	-104.8188758	0.00
12525.00	90.00	267.73	7067.00	4515.28	-1807.00	-4201.27	40.4526371	-104.8192348	0.00
12625.00	90.00	267.73	7067.00	4613.15	-1810.97	-4301.19	40.4526262	-104.8195938	0.00
12725.00	90.00	267.73	7067.00	4711.01	-1814.93	-4401.11	40.4526152	-104.8199529	0.00
12825.00	90.00	267.73	7067.00	4808.88	-1818.89	-4501.03	40.4526043	-104.8203119	0.00
12925.00	90.00	267.73	7067.00	4906.75	-1822.86	-4600.95	40.4525934	-104.8206709	0.00
13025.00	90.00	267.73	7067.00	5004.61	-1826.82	-4700.87	40.4525824	-104.8210300	0.00
13125.00	90.00	267.73	7067.00	5102.48	-1830.78	-4800.80	40.4525715	-104.8213890	0.00
13225.00	90.00	267.73	7067.00	5200.34	-1834.75	-4900.72	40.4525606	-104.8217480	0.00
13325.00	90.00	267.73	7067.00	5298.21	-1838.71	-5000.64	40.4525496	-104.8221071	0.00
13425.00	90.00	267.73	7067.00	5396.08	-1842.67	-5100.56	40.4525387	-104.8224661	0.00
13525.00	90.00	267.73	7067.00	5493.94	-1846.64	-5200.48	40.4525278	-104.8228251	0.00
13625.00	90.00	267.73	7067.00	5591.81	-1850.60	-5300.40	40.4525168	-104.8231842	0.00
13725.00	90.00	267.73	7067.00	5689.67	-1854.56	-5400.32	40.4525059	-104.8235432	0.00
13825.00	90.00	267.73	7067.00	5787.54	-1858.53	-5500.25	40.4524950	-104.8239022	0.00
13925.00	90.00	267.73	7067.00	5885.40	-1862.49	-5600.17	40.4524840	-104.8242613	0.00
14025.00	90.00	267.73	7067.00	5983.27	-1866.45	-5700.09	40.4524731	-104.8246203	0.00
14125.00	90.00	267.73	7067.00	6081.14	-1870.42	-5800.01	40.4524621	-104.8249793	0.00
14225.00	90.00	267.73	7067.00	6179.00	-1874.38	-5899.93	40.4524512	-104.8253384	0.00
14325.00	90.00	267.73	7067.00	6276.87	-1878.34	-5999.85	40.4524402	-104.8256974	0.00
14425.00	90.00	267.73	7067.00	6374.73	-1882.31	-6099.77	40.4524293	-104.8260564	0.00
14525.00	90.00	267.73	7067.00	6472.60	-1886.27	-6199.70	40.4524183	-104.8264155	0.00
14625.00	90.00	267.73	7067.00	6570.47	-1890.23	-6299.62	40.4524074	-104.8267745	0.00
14725.00	90.00	267.73	7067.00	6668.33	-1894.20	-6399.54	40.4523964	-104.8271335	0.00
14825.00	90.00	267.73	7067.00	6766.20	-1898.16	-6499.46	40.4523855	-104.8274925	0.00
14925.00	90.00	267.73	7067.00	6864.06	-1902.12	-6599.38	40.4523745	-104.8278516	0.00
15025.00	90.00	267.73	7067.00	6961.93	-1906.09	-6699.30	40.4523636	-104.8282106	0.00
15125.00	90.00	267.73	7067.00	7059.80	-1910.05	-6799.22	40.4523526	-104.8285696	0.00
15225.00	90.00	267.73	7067.00	7157.66	-1914.01	-6899.15	40.4523417	-104.8289287	0.00
15325.00	90.00	267.73	7067.00	7255.53	-1917.98	-6999.07	40.4523307	-104.8292877	0.00
15425.00	90.00	267.73	7067.00	7353.39	-1921.94	-7098.99	40.4523198	-104.8296467	0.00
15525.00	90.00	267.73	7067.00	7451.26	-1925.90	-7198.91	40.4523088	-104.8300058	0.00
15625.00	90.00	267.73	7067.00	7549.12	-1929.87	-7298.83	40.4522979	-104.8303648	0.00
15725.00	90.00	267.73	7067.00	7646.99	-1933.83	-7398.75	40.4522869	-104.8307238	0.00
15825.00	90.00	267.73	7067.00	7744.86	-1937.79	-7498.67	40.4522759	-104.8310828	0.00
15925.00	90.00	267.73	7067.00	7842.72	-1941.76	-7598.60	40.4522650	-104.8314419	0.00
16025.00	90.00	267.73	7067.00	7940.59	-1945.72	-7698.52	40.4522540	-104.8318009	0.00
16061.51	90.00	267.73	7067.00	7976.32	-1947.17	-7735.00	40.4522500	-104.8319320	0.00



Planned Wellpath Report

GOETZEL 13C-30-M REV-A.0 PWP

Page 1 of 8



REFERENCE WELLPATH IDENTIFICATION

Operator	SYNERGY RESOURCES CORPORATION	Slot	SLOT#22 GOETZEL 13C-30-M (2137'FSL & 2053'FWL, SEC.29)
Area	COLORADO	Well	GOETZEL 13C-30-M
Field	WELD COUNTY (NAD83,TRUE NORTH)	Wellbore	GOETZEL 13C-30-M PWB
Facility	SEC.29-T06N-R66W		

REPORT SETUP INFORMATION

Projection System	NAD83 / Lambert Colorado SP, Northern Zone (501), US feet	Software System	WellArchitect® 5.0
North Reference	True	User	Wagnjam
Scale	0.999963	Report Generated	2/27/2017 at 6:24:37 PM
Convergence at slot	0.45° East	Database/Source file	WA_DEN_Denver_Defn/GOETZEL_13C-30-M_REV-A.0_PWP.xml

WELLPATH LOCATION

	Local coordinates		Grid coordinates		Geographic coordinates	
	North[ft]	East[ft]	Easting[US ft]	Northing[US ft]	Latitude	Longitude
Slot Location	-1362.53	-822.56	3193637.88	1410303.09	40°27'27.353"N	104°48'14.900"W
Facility Reference Pt			3194449.65	1411672.01	40°27'40.817"N	104°48'04.259"W
Field Reference Pt			3171284.48	1426358.81	40°30'07.643"N	104°53'02.634"W

WELLPATH DATUM

Calculation method	Minimum curvature	H&P 562 (25') (RKB) to Facility Vertical Datum	4757.00ft
Horizontal Reference Pt	Slot	H&P 562 (25') (RKB) to Mean Sea Level	4757.00ft
Vertical Reference Pt	H&P 562 (25') (RKB)	H&P 562 (25') (RKB) to Mud Line at Slot (SLOT#22 GOETZEL 13C-30-M (2137'FSL & 2053'FWL, SEC.29))	4757.00ft
MD Reference Pt	H&P 562 (25') (RKB)	Section Origin	N 0.00, E 0.00 ft
Field Vertical Reference	Mean Sea Level	Section Azimuth	255.87°



Planned Wellpath Report

GOETZEL 13C-30-M REV-A.0 PWP

Page 2 of 8



REFERENCE WELLPATH IDENTIFICATION

Operator	SYNERGY RESOURCES CORPORATION	Slot	SLOT#22 GOETZEL 13C-30-M (2137'FSL & 2053'FWL, SEC.29)
Area	COLORADO	Well	GOETZEL 13C-30-M
Field	WELD COUNTY (NAD83,TRUE NORTH)	Wellbore	GOETZEL 13C-30-M PWB
Facility	SEC.29-T06N-R66W		

WELLPATH DATA (167 stations) † = interpolated/extrapolated station

MD [ft]	Inclination [°]	Azimuth [°]	TVD [ft]	Vert Sect [ft]	North [ft]	East [ft]	DLS [°/100ft]	Comments
0.00†	0.000	138.629	0.00	0.00	0.00	0.00	0.00	
25.00	0.000	138.629	25.00	0.00	0.00	0.00	0.00	Tie On
125.00†	0.000	138.629	125.00	0.00	0.00	0.00	0.00	
225.00†	0.000	138.629	225.00	0.00	0.00	0.00	0.00	
325.00†	0.000	138.629	325.00	0.00	0.00	0.00	0.00	
425.00†	0.000	138.629	425.00	0.00	0.00	0.00	0.00	
525.00†	0.000	138.629	525.00	0.00	0.00	0.00	0.00	
600.00	0.000	138.629	600.00	0.00	0.00	0.00	0.00	End of Tangent
625.00†	0.500	138.629	625.00	-0.05	-0.08	0.07	2.00	
725.00†	2.500	138.629	724.96	-1.25	-2.05	1.80	2.00	
825.00†	4.500	138.629	824.77	-4.04	-6.63	5.84	2.00	
925.00†	6.500	138.629	924.30	-8.43	-13.82	12.17	2.00	
1025.00†	8.500	138.629	1023.44	-14.40	-23.61	20.80	2.00	
1125.00†	10.500	138.629	1122.07	-21.96	-36.00	31.71	2.00	
1225.00†	12.500	138.629	1220.05	-31.08	-50.96	44.88	2.00	
1325.00†	14.500	138.629	1317.29	-41.77	-68.48	60.31	2.00	
1425.00†	16.500	138.629	1413.64	-54.00	-88.53	77.97	2.00	
1525.00†	18.500	138.629	1509.01	-67.76	-111.10	97.85	2.00	
1573.29	19.466	138.629	1554.67	-74.95	-122.88	108.23	2.00	End of Build
1625.00†	19.466	138.629	1603.43	-82.84	-135.82	119.62	0.00	
1725.00†	19.466	138.629	1697.71	-98.10	-160.83	141.64	0.00	
1825.00†	19.466	138.629	1792.00	-113.35	-185.83	163.67	0.00	
1925.00†	19.466	138.629	1886.28	-128.60	-210.84	185.69	0.00	
2025.00†	19.466	138.629	1980.56	-143.86	-235.85	207.72	0.00	
2125.00†	19.466	138.629	2074.85	-159.11	-260.86	229.74	0.00	
2225.00†	19.466	138.629	2169.13	-174.36	-285.87	251.77	0.00	
2325.00†	19.466	138.629	2263.42	-189.62	-310.87	273.79	0.00	
2425.00†	19.466	138.629	2357.70	-204.87	-335.88	295.82	0.00	
2525.00†	19.466	138.629	2451.99	-220.12	-360.89	317.84	0.00	
2625.00†	19.466	138.629	2546.27	-235.38	-385.90	339.87	0.00	



Planned Wellpath Report

GOETZEL 13C-30-M REV-A.0 PWP

Page 3 of 8



REFERENCE WELLPATH IDENTIFICATION

Operator	SYNERGY RESOURCES CORPORATION	Slot	SLOT#22 GOETZEL 13C-30-M (2137'FSL & 2053'FWL, SEC.29)
Area	COLORADO	Well	GOETZEL 13C-30-M
Field	WELD COUNTY (NAD83,TRUE NORTH)	Wellbore	GOETZEL 13C-30-M PWB
Facility	SEC.29-T06N-R66W		

WELLPATH DATA (167 stations) † = interpolated/extrapolated station

MD [ft]	Inclination [°]	Azimuth [°]	TVD [ft]	Vert Sect [ft]	North [ft]	East [ft]	DLS [°/100ft]	Comments
2725.00†	19.466	138.629	2640.55	-250.63	-410.91	361.89	0.00	
2825.00†	19.466	138.629	2734.84	-265.89	-435.92	383.92	0.00	
2925.00†	19.466	138.629	2829.12	-281.14	-460.92	405.94	0.00	
3025.00†	19.466	138.629	2923.41	-296.39	-485.93	427.97	0.00	
3125.00†	19.466	138.629	3017.69	-311.65	-510.94	449.99	0.00	
3225.00†	19.466	138.629	3111.97	-326.90	-535.95	472.02	0.00	
3325.00†	19.466	138.629	3206.26	-342.15	-560.96	494.04	0.00	
3425.00†	19.466	138.629	3300.54	-357.41	-585.96	516.07	0.00	
3525.00†	19.466	138.629	3394.83	-372.66	-610.97	538.09	0.00	
3625.00†	19.466	138.629	3489.11	-387.91	-635.98	560.12	0.00	
3725.00†	19.466	138.629	3583.39	-403.17	-660.99	582.14	0.00	
3825.00†	19.466	138.629	3677.68	-418.42	-686.00	604.17	0.00	
3925.00†	19.466	138.629	3771.96	-433.68	-711.01	626.19	0.00	
4025.00†	19.466	138.629	3866.25	-448.93	-736.01	648.22	0.00	
4125.00†	19.466	138.629	3960.53	-464.18	-761.02	670.24	0.00	
4225.00†	19.466	138.629	4054.82	-479.44	-786.03	692.27	0.00	
4325.00†	19.466	138.629	4149.10	-494.69	-811.04	714.29	0.00	
4425.00†	19.466	138.629	4243.38	-509.94	-836.05	736.31	0.00	
4525.00†	19.466	138.629	4337.67	-525.20	-861.05	758.34	0.00	
4625.00†	19.466	138.629	4431.95	-540.45	-886.06	780.36	0.00	
4725.00†	19.466	138.629	4526.24	-555.70	-911.07	802.39	0.00	
4825.00†	19.466	138.629	4620.52	-570.96	-936.08	824.41	0.00	
4925.00†	19.466	138.629	4714.80	-586.21	-961.09	846.44	0.00	
5025.00†	19.466	138.629	4809.09	-601.47	-986.10	868.46	0.00	
5125.00†	19.466	138.629	4903.37	-616.72	-1011.10	890.49	0.00	
5225.00†	19.466	138.629	4997.66	-631.97	-1036.11	912.51	0.00	
5325.00†	19.466	138.629	5091.94	-647.23	-1061.12	934.54	0.00	
5425.00†	19.466	138.629	5186.22	-662.48	-1086.13	956.56	0.00	
5525.00†	19.466	138.629	5280.51	-677.73	-1111.14	978.59	0.00	
5625.00†	19.466	138.629	5374.79	-692.99	-1136.14	1000.61	0.00	



Planned Wellpath Report

GOETZEL 13C-30-M REV-A.0 PWP

Page 4 of 8



REFERENCE WELLPATH IDENTIFICATION

Operator	SYNERGY RESOURCES CORPORATION	Slot	SLOT#22 GOETZEL 13C-30-M (2137'FSL & 2053'FWL, SEC.29)
Area	COLORADO	Well	GOETZEL 13C-30-M
Field	WELD COUNTY (NAD83,TRUE NORTH)	Wellbore	GOETZEL 13C-30-M PWB
Facility	SEC.29-T06N-R66W		

WELLPATH DATA (167 stations) † = interpolated/extrapolated station

MD [ft]	Inclination [°]	Azimuth [°]	TVD [ft]	Vert Sect [ft]	North [ft]	East [ft]	DLS [°/100ft]	Comments
5725.00†	19.466	138.629	5469.08	-708.24	-1161.15	1022.64	0.00	
5825.00†	19.466	138.629	5563.36	-723.49	-1186.16	1044.66	0.00	
5925.00†	19.466	138.629	5657.64	-738.75	-1211.17	1066.69	0.00	
6025.00†	19.466	138.629	5751.93	-754.00	-1236.18	1088.71	0.00	
6125.00†	19.466	138.629	5846.21	-769.26	-1261.19	1110.74	0.00	
6225.00†	19.466	138.629	5940.50	-784.51	-1286.19	1132.76	0.00	
6325.00†	19.466	138.629	6034.78	-799.76	-1311.20	1154.79	0.00	
6425.00†	19.466	138.629	6129.07	-815.02	-1336.21	1176.81	0.00	
6525.00†	19.466	138.629	6223.35	-830.27	-1361.22	1198.84	0.00	
6533.28	19.466	138.629	6231.16	-831.53	-1363.29	1200.66	0.00	End of Tangent
6625.00†	16.053	160.136	6318.59	-839.81	-1386.72	1215.09	8.00	
6725.00†	15.662	189.683	6414.94	-835.73	-1413.07	1217.52	8.00	
6825.00†	18.916	214.559	6510.54	-818.08	-1439.77	1206.04	8.00	
6925.00†	24.397	230.517	6603.52	-787.19	-1466.29	1180.86	8.00	
7025.00†	30.942	240.499	6692.09	-743.67	-1492.13	1142.49	8.00	
7125.00†	38.003	247.177	6774.50	-688.36	-1516.77	1091.66	8.00	
7225.00†	45.337	252.000	6849.17	-622.34	-1539.73	1029.36	8.00	
7325.00†	52.828	255.724	6914.63	-546.89	-1560.58	956.81	8.00	
7425.00†	60.414	258.770	6969.62	-463.49	-1578.90	875.41	8.00	
7525.00†	68.061	261.385	7013.06	-373.75	-1594.34	786.77	8.00	
7625.00†	75.744	263.732	7044.10	-279.43	-1606.60	692.59	8.00	
7725.00†	83.449	265.923	7062.15	-182.36	-1615.44	594.71	8.00	
7809.93	90.000	267.729	7067.00†	-99.16	-1620.13	510.10	8.00	End of 3D Arc
7825.00†	90.000	267.729	7067.00	-84.41	-1620.72	495.04	0.00	
7925.00†	90.000	267.729	7067.00	13.45	-1624.69	395.12	0.00	
8025.00†	90.000	267.729	7067.00	111.32	-1628.65	295.20	0.00	
8125.00†	90.000	267.729	7067.00	209.18	-1632.61	195.28	0.00	
8225.00†	90.000	267.729	7067.00	307.05	-1636.58	95.35	0.00	
8325.00†	90.000	267.729	7067.00	404.92	-1640.54	-4.57	0.00	
8425.00†	90.000	267.729	7067.00	502.78	-1644.50	-104.49	0.00	



Planned Wellpath Report

GOETZEL 13C-30-M REV-A.0 PWP

Page 5 of 8



REFERENCE WELLPATH IDENTIFICATION

Operator	SYNERGY RESOURCES CORPORATION	Slot	SLOT#22 GOETZEL 13C-30-M (2137'FSL & 2053'FWL, SEC.29)
Area	COLORADO	Well	GOETZEL 13C-30-M
Field	WELD COUNTY (NAD83,TRUE NORTH)	Wellbore	GOETZEL 13C-30-M PWB
Facility	SEC.29-T06N-R66W		

WELLPATH DATA (167 stations) † = interpolated/extrapolated station

MD [ft]	Inclination [°]	Azimuth [°]	TVD [ft]	Vert Sect [ft]	North [ft]	East [ft]	DLS [°/100ft]	Comments
8525.00†	90.000	267.729	7067.00	600.65	-1648.47	-204.41	0.00	
8625.00†	90.000	267.729	7067.00	698.51	-1652.43	-304.33	0.00	
8725.00†	90.000	267.729	7067.00	796.38	-1656.39	-404.25	0.00	
8825.00†	90.000	267.729	7067.00	894.24	-1660.36	-504.17	0.00	
8925.00†	90.000	267.729	7067.00	992.11	-1664.32	-604.10	0.00	
9025.00†	90.000	267.729	7067.00	1089.98	-1668.28	-704.02	0.00	
9125.00†	90.000	267.729	7067.00	1187.84	-1672.25	-803.94	0.00	
9225.00†	90.000	267.729	7067.00	1285.71	-1676.21	-903.86	0.00	
9325.00†	90.000	267.729	7067.00	1383.57	-1680.17	-1003.78	0.00	
9425.00†	90.000	267.729	7067.00	1481.44	-1684.14	-1103.70	0.00	
9525.00†	90.000	267.729	7067.00	1579.31	-1688.10	-1203.62	0.00	
9625.00†	90.000	267.729	7067.00	1677.17	-1692.06	-1303.55	0.00	
9725.00†	90.000	267.729	7067.00	1775.04	-1696.03	-1403.47	0.00	
9825.00†	90.000	267.729	7067.00	1872.90	-1699.99	-1503.39	0.00	
9925.00†	90.000	267.729	7067.00	1970.77	-1703.95	-1603.31	0.00	
10025.00†	90.000	267.729	7067.00	2068.64	-1707.92	-1703.23	0.00	
10125.00†	90.000	267.729	7067.00	2166.50	-1711.88	-1803.15	0.00	
10225.00†	90.000	267.729	7067.00	2264.37	-1715.84	-1903.07	0.00	
10325.00†	90.000	267.729	7067.00	2362.23	-1719.81	-2003.00	0.00	
10425.00†	90.000	267.729	7067.00	2460.10	-1723.77	-2102.92	0.00	
10525.00†	90.000	267.729	7067.00	2557.96	-1727.73	-2202.84	0.00	
10625.00†	90.000	267.729	7067.00	2655.83	-1731.70	-2302.76	0.00	
10725.00†	90.000	267.729	7067.00	2753.70	-1735.66	-2402.68	0.00	
10825.00†	90.000	267.729	7067.00	2851.56	-1739.62	-2502.60	0.00	
10925.00†	90.000	267.729	7067.00	2949.43	-1743.59	-2602.52	0.00	
11025.00†	90.000	267.729	7067.00	3047.29	-1747.55	-2702.45	0.00	
11125.00†	90.000	267.729	7067.00	3145.16	-1751.51	-2802.37	0.00	
11225.00†	90.000	267.729	7067.00	3243.03	-1755.48	-2902.29	0.00	
11325.00†	90.000	267.729	7067.00	3340.89	-1759.44	-3002.21	0.00	
11425.00†	90.000	267.729	7067.00	3438.76	-1763.41	-3102.13	0.00	



Planned Wellpath Report

GOETZEL 13C-30-M REV-A.0 PWP

Page 6 of 8



REFERENCE WELLPATH IDENTIFICATION

Operator	SYNERGY RESOURCES CORPORATION	Slot	SLOT#22 GOETZEL 13C-30-M (2137'FSL & 2053'FWL, SEC.29)
Area	COLORADO	Well	GOETZEL 13C-30-M
Field	WELD COUNTY (NAD83,TRUE NORTH)	Wellbore	GOETZEL 13C-30-M PWB
Facility	SEC.29-T06N-R66W		

WELLPATH DATA (167 stations) † = interpolated/extrapolated station

MD [ft]	Inclination [°]	Azimuth [°]	TVD [ft]	Vert Sect [ft]	North [ft]	East [ft]	DLS [°/100ft]	Comments
11525.00†	90.000	267.729	7067.00	3536.62	-1767.37	-3202.05	0.00	
11625.00†	90.000	267.729	7067.00	3634.49	-1771.33	-3301.97	0.00	
11725.00†	90.000	267.729	7067.00	3732.36	-1775.30	-3401.90	0.00	
11825.00†	90.000	267.729	7067.00	3830.22	-1779.26	-3501.82	0.00	
11925.00†	90.000	267.729	7067.00	3928.09	-1783.22	-3601.74	0.00	
12025.00†	90.000	267.729	7067.00	4025.95	-1787.19	-3701.66	0.00	
12125.00†	90.000	267.729	7067.00	4123.82	-1791.15	-3801.58	0.00	
12225.00†	90.000	267.729	7067.00	4221.68	-1795.11	-3901.50	0.00	
12325.00†	90.000	267.729	7067.00	4319.55	-1799.08	-4001.42	0.00	
12425.00†	90.000	267.729	7067.00	4417.42	-1803.04	-4101.35	0.00	
12525.00†	90.000	267.729	7067.00	4515.28	-1807.00	-4201.27	0.00	
12625.00†	90.000	267.729	7067.00	4613.15	-1810.97	-4301.19	0.00	
12725.00†	90.000	267.729	7067.00	4711.01	-1814.93	-4401.11	0.00	
12825.00†	90.000	267.729	7067.00	4808.88	-1818.89	-4501.03	0.00	
12925.00†	90.000	267.729	7067.00	4906.75	-1822.86	-4600.95	0.00	
13025.00†	90.000	267.729	7067.00	5004.61	-1826.82	-4700.87	0.00	
13125.00†	90.000	267.729	7067.00	5102.48	-1830.78	-4800.80	0.00	
13225.00†	90.000	267.729	7067.00	5200.34	-1834.75	-4900.72	0.00	
13325.00†	90.000	267.729	7067.00	5298.21	-1838.71	-5000.64	0.00	
13425.00†	90.000	267.729	7067.00	5396.08	-1842.67	-5100.56	0.00	
13525.00†	90.000	267.729	7067.00	5493.94	-1846.64	-5200.48	0.00	
13625.00†	90.000	267.729	7067.00	5591.81	-1850.60	-5300.40	0.00	
13725.00†	90.000	267.729	7067.00	5689.67	-1854.56	-5400.32	0.00	
13825.00†	90.000	267.729	7067.00	5787.54	-1858.53	-5500.25	0.00	
13925.00†	90.000	267.729	7067.00	5885.40	-1862.49	-5600.17	0.00	
14025.00†	90.000	267.729	7067.00	5983.27	-1866.45	-5700.09	0.00	
14125.00†	90.000	267.729	7067.00	6081.14	-1870.42	-5800.01	0.00	
14225.00†	90.000	267.729	7067.00	6179.00	-1874.38	-5899.93	0.00	
14325.00†	90.000	267.729	7067.00	6276.87	-1878.34	-5999.85	0.00	
14425.00†	90.000	267.729	7067.00	6374.73	-1882.31	-6099.77	0.00	



Planned Wellpath Report

GOETZEL 13C-30-M REV-A.0 PWP

Page 7 of 8



REFERENCE WELLPATH IDENTIFICATION

Operator	SYNERGY RESOURCES CORPORATION	Slot	SLOT#22 GOETZEL 13C-30-M (2137'FSL & 2053'FWL, SEC.29)
Area	COLORADO	Well	GOETZEL 13C-30-M
Field	WELD COUNTY (NAD83,TRUE NORTH)	Wellbore	GOETZEL 13C-30-M PWB
Facility	SEC.29-T06N-R66W		

WELLPATH DATA (167 stations) † = interpolated/extrapolated station

MD [ft]	Inclination [°]	Azimuth [°]	TVD [ft]	Vert Sect [ft]	North [ft]	East [ft]	DLS [°/100ft]	Comments
14525.00†	90.000	267.729	7067.00	6472.60	-1886.27	-6199.70	0.00	
14625.00†	90.000	267.729	7067.00	6570.47	-1890.23	-6299.62	0.00	
14725.00†	90.000	267.729	7067.00	6668.33	-1894.20	-6399.54	0.00	
14825.00†	90.000	267.729	7067.00	6766.20	-1898.16	-6499.46	0.00	
14925.00†	90.000	267.729	7067.00	6864.06	-1902.12	-6599.38	0.00	
15025.00†	90.000	267.729	7067.00	6961.93	-1906.09	-6699.30	0.00	
15125.00†	90.000	267.729	7067.00	7059.80	-1910.05	-6799.22	0.00	
15225.00†	90.000	267.729	7067.00	7157.66	-1914.01	-6899.15	0.00	
15325.00†	90.000	267.729	7067.00	7255.53	-1917.98	-6999.07	0.00	
15425.00†	90.000	267.729	7067.00	7353.39	-1921.94	-7098.99	0.00	
15525.00†	90.000	267.729	7067.00	7451.26	-1925.90	-7198.91	0.00	
15625.00†	90.000	267.729	7067.00	7549.12	-1929.87	-7298.83	0.00	
15725.00†	90.000	267.729	7067.00	7646.99	-1933.83	-7398.75	0.00	
15825.00†	90.000	267.729	7067.00	7744.86	-1937.79	-7498.67	0.00	
15925.00†	90.000	267.729	7067.00	7842.72	-1941.76	-7598.60	0.00	
16025.00†	90.000	267.729	7067.00	7940.59	-1945.72	-7698.52	0.00	
16061.51	90.000	267.729	7067.00 ²	7976.32	-1947.17	-7735.00	0.00	End of Tangent

HOLE & CASING SECTIONS - Ref Wellbore: GOETZEL 13C-30-M PWB Ref Wellpath: GOETZEL 13C-30-M REV-A.0 PWP

String/Diameter	Start MD [ft]	End MD [ft]	Interval [ft]	Start TVD [ft]	End TVD [ft]	Start N/S [ft]	Start E/W [ft]	End N/S [ft]	End E/W [ft]
13.5in Open Hole	25.00	1700.00	1675.00	25.00	1674.14	0.00	0.00	-154.57	136.13
8.5in Open Hole	1700.00	16061.00	14361.00	1674.14	7067.00	-154.57	136.13	-1947.15	-7734.49



Planned Wellpath Report

GOETZEL 13C-30-M REV-A.0 PWP

Page 8 of 8



REFERENCE WELLPATH IDENTIFICATION

Operator	SYNERGY RESOURCES CORPORATION	Slot	SLOT#22 GOETZEL 13C-30-M (2137'FSL & 2053'FWL, SEC.29)
Area	COLORADO	Well	GOETZEL 13C-30-M
Field	WELD COUNTY (NAD83,TRUE NORTH)	Wellbore	GOETZEL 13C-30-M PWB
Facility	SEC.29-T06N-R66W		

TARGETS

Name	MD [ft]	TVD [ft]	North [ft]	East [ft]	Grid East [US ft]	Grid North [US ft]	Latitude	Longitude	Shape
SEC.29-T06N-R66W NORTHERN		9.00	1362.53	822.53	3194449.66	1411671.99	40°27'40.817"N	104°48'04.259"W	polygon
SEC.29-T06N-R66W SOUTHERN		9.00	1362.53	822.53	3194449.66	1411671.99	40°27'40.817"N	104°48'04.259"W	polygon
SEC.30-T06N-R66W NORTHERN		9.00	1362.53	822.53	3194449.66	1411671.99	40°27'40.817"N	104°48'04.259"W	polygon
SEC.30-T06N-R66W SOUTHERN		9.00	1362.53	822.53	3194449.66	1411671.99	40°27'40.817"N	104°48'04.259"W	polygon
GOETZEL 13C-30-M BHL ON PLAT (554'FSL & 510'FWL SEC.30)		7067.00	-1927.60	-7375.15	3186278.37	1408317.75	40°27'08.294"N	104°49'50.300"W	circle
2) GOETZEL 13C-30-M BHL REV-1 (554'FSL & 150'FWL SEC.30)	16061.51	7067.00	-1947.17	-7735.00	3185918.69	1408295.36	40°27'08.100"N	104°49'54.955"W	point
1) GOETZEL 13C-30-M TOP OF PROD REV-1 (504'FSL & 2570'FWL SEC.29)	7809.93	7067.00	-1620.13	510.10	3194160.65	1408687.08	40°27'11.344"N	104°48'08.302"W	circle

SURVEY PROGRAM - Ref Wellbore: GOETZEL 13C-30-M PWB Ref Wellpath: GOETZEL 13C-30-M REV-A.0 PWP

Start MD [ft]	End MD [ft]	Positional Uncertainty Model	Log Name/Comment	Wellbore
25.00	1700.00	Custom BHI NaviTrak (Standard Rotating+Axial Corr) (Rockies 0.03Gt model)		GOETZEL 13C-30-M PWB
1700.00	16061.51	Custom BHI AutoTrak Curve (IFR1, Short) (Rockies 0.03Gt model)		GOETZEL 13C-30-M PWB