

# SYNERGY RESOURCES CORPORATION

Location: COLORADO Slot: SLOT#16 GOETZEL 12N-30A-M (2257'FSL & 2053'FWL, SEC.29)  
Field: WELD COUNTY (NAD83,TRUE NORTH) Well: GOETZEL 12N-30A-M  
Facility: SEC.29-T06N-R66W Wellbore: GOETZEL 12N-30A-M PWB

Plot reference wellpath is GOETZEL 12N-30A-M REV-A.0 PWP	Grid System: NAD83 / Lambert Colorado SP, Northern Zone (501), US feet
True vertical depths are referenced to PRECISION 562 (25) (RKB)	* = Wellpath was transformed from a different geoidic datum
Measured depths are referenced to PRECISION 562 (25) (RKB)	North Reference: True north
PRECISION 562 (25) (RKB) to Mean Sea Level: 4757 feet	Scale: True distance
Mean Sea Level to Mud line (At Slot: SLOT#16 GOETZEL 12N-30A-M (2257'FSL & 2053'FWL, SEC.29)): 0 feet	Depths are in feet
Coordinates are in feet referenced to Slot	Created by: wagner on 2017-02-27
	Database: WA_DEN_Denver, Deln

## Location Information

Facility Name				Grid East (US ft)	Grid North (US ft)	Latitude	Longitude
SEC.29-T06N-R66W				3194449.646	1411672.008	40°27'40.817"N	104°48'04.255"W
Slot	Local N (ft)	Local E (ft)		Grid East (US ft)	Grid North (US ft)	Latitude	Longitude
SLOT#16 GOETZEL 12N-30A-M (2257'FSL & 2053'FWL, SEC.29)	-1242.30	-821.79		3193637.708	1410423.315	40°27'28.541"N	104°48'14.890"W
PRECISION 562 (25) (RKB) to Mud line (At Slot: SLOT#16 GOETZEL 12N-30A-M (2257'FSL & 2053'FWL, SEC.29))						4757ft	
Mean Sea Level to Mud line (At Slot: SLOT#16 GOETZEL 12N-30A-M (2257'FSL & 2053'FWL, SEC.29))						0ft	
PRECISION 562 (25) (RKB) to Mean Sea Level						4757ft	

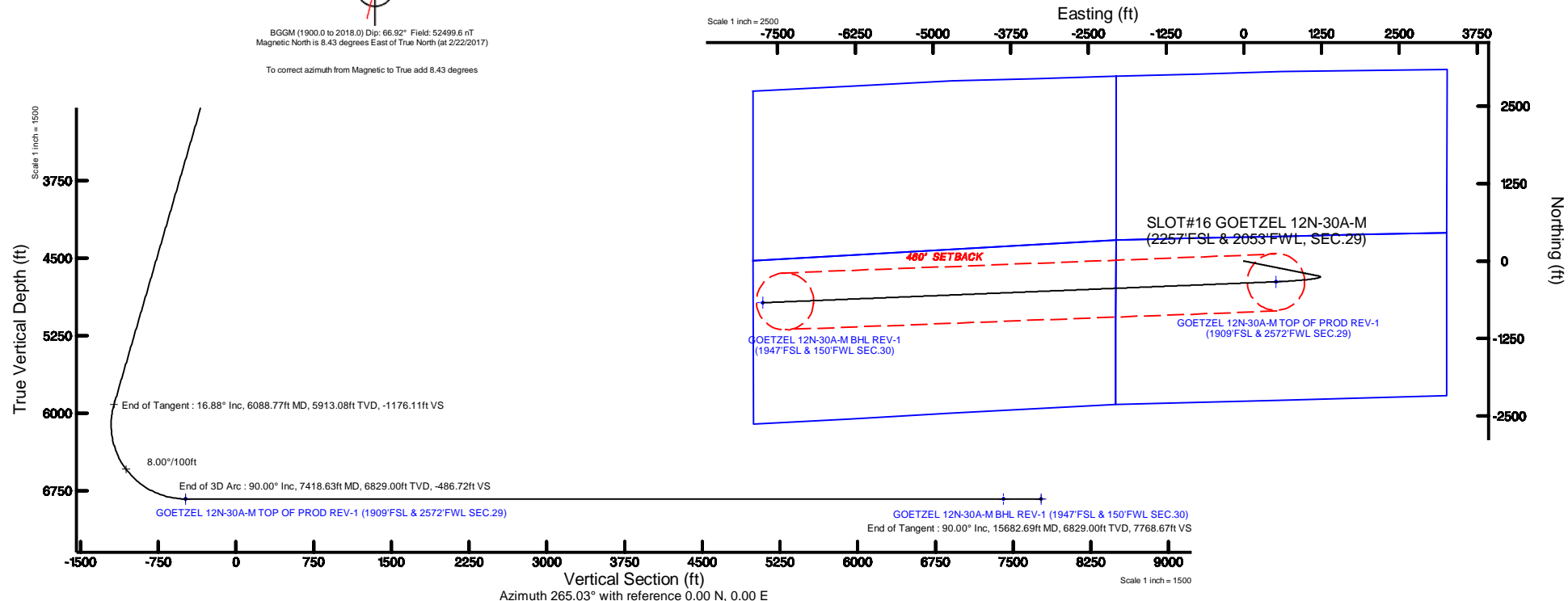
## Tie-On Position

MD (ft)	Inc (°)	Az (°)	TVD (ft)	Local N (ft)	Local E (ft)	Grid East (US ft)	Grid North (US ft)	Latitude	Longitude
25.00	0.000	101.344	25.00	0.00	0.00	3193637.71	1410423.31	40°27'28.541"N	104°48'14.890"W



BGGM (1900.0 to 2018.0) Dip: 66.92° Field: 52499.6 nT  
Magnetic North is 8.43 degrees East of True North (at 2/22/2017)

To correct azimuth from Magnetic to True add 8.43 degrees

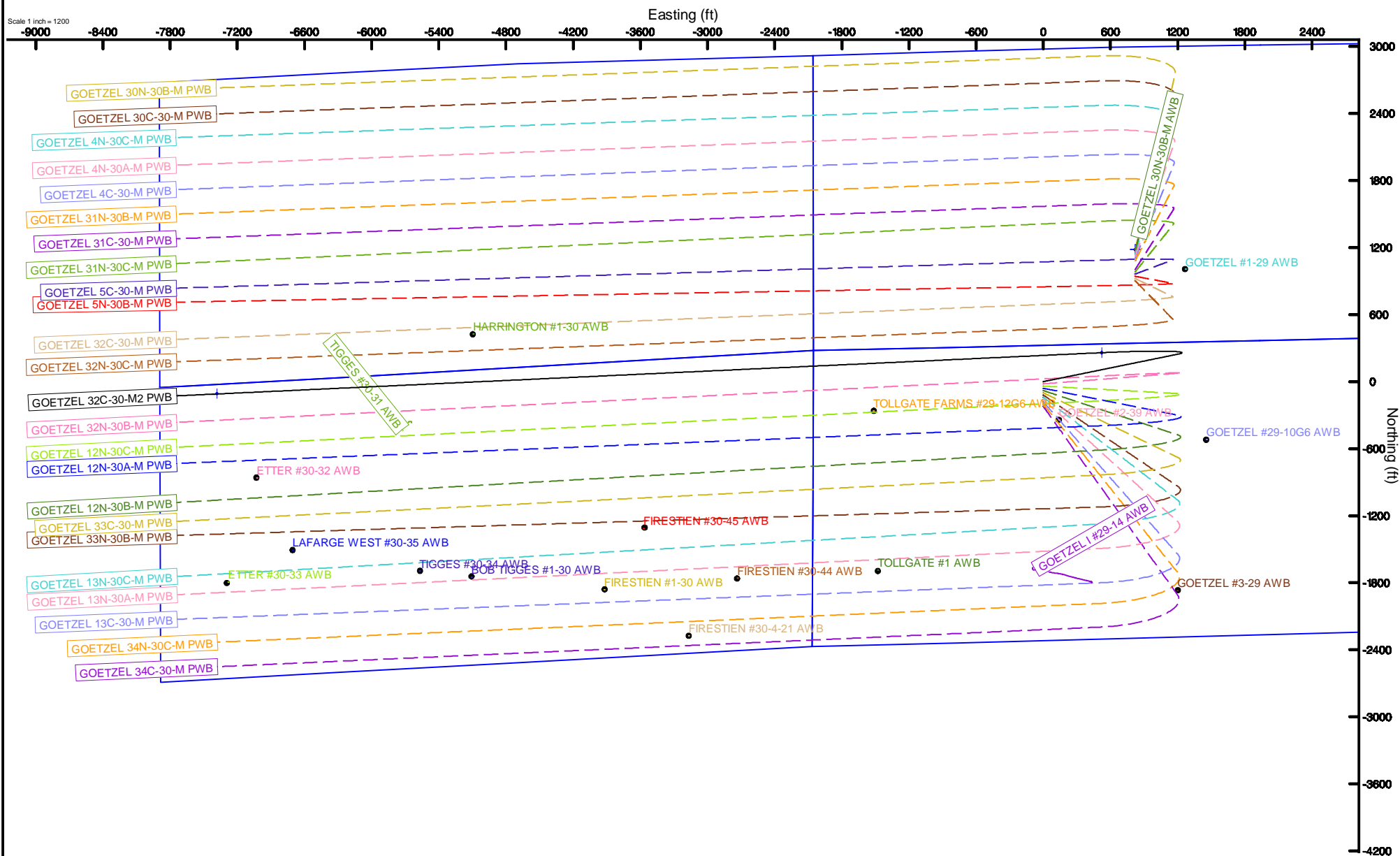


Location:	COLORADO	Slot:	SLOT#13 GOETZEL 32C-30-M2 (2317'FSL & 2053'FWL SEC.29
Field:	WELD COUNTY (NAD83,TRUE NORTH)	Well:	GOETZEL 32C-30-M2
Facility:	SEC.29-T06N-R66W	Wellbore:	GOETZEL 32C-30-M2 PWB



BGM (1900.0 to 2018.0) Dip: 66.92° Field: 52499.6 nT  
Magnetic North is 8.43 degrees East of True North (at 2/22/2017)

To correct azimuth from Magnetic to True add 8.43 degrees



GOETZEL\_12N-30A-M\_REV-A.0\_PWP.1as

~VERSION INFORMATION

VERS. 2.0 : CWLS LOG ASCII STANDARD-VERSION 2.0  
 WRAP. NO : ASCII DATA SECTION CONTAINS ONE ROW PER WELLPATH STATION

~WELL INFORMATION

#MNEM	.UNITS	DATA	:DESCRIPTION
#----	.-----	----	:-----
STRT	.ft	0.00	:START MD
STOP	.ft	15682.69	:STOP MD
STEP	.ft	0.0	:STEP (non-uniform increment)
NULL	.	-999.99	:NULL
COMP	.	SYNERGY RESOURCES CORPORATION	:OPERATOR
WELL	.	GOETZEL 12N-30A-M	:WELL
FLD	.	WELD COUNTY (NAD83,TRUE NORTH)	:FIELD
LOC	.	COLORADO	:AREA (aka: Location)
CNTY	.	N/A	:COUNTY
STAT	.	N/A	:STATE
CTRY	.	N/A	:COUNTRY
SRVC	.	Baker Hughes	:CONTRACTOR
DATE	.	02/22/2017	:LOG REV DATE
API	.		:API NUMBER

~OTHER INFORMATION

#Software: wellArchitect(R) Version 5.0

#MNEM	.UNITS	DATA	:DESCRIPTION
#----	.-----	----	:-----
WPTYPE	.	PLANNED WELLPATH	:WELLPATH TYPE
FACILITY	.	SEC.29-T06N-R66W	:FACILITY
SLOT	.	SLOT#16 GOETZEL 12N-30A-M (2257'FSL & 2053'FWL, SEC.29):SLOT	:SLOT
WELLBORE	.	GOETZEL 12N-30A-M PWB	:WELLBORE
WELLPATH	.	GOETZEL 12N-30A-M REV-A.0 PWP	:WELLPATH
MDREFPT	.	PRECISION 562 (25') (RKB)	:MD REFERENCE POINT
TVDREFPT	.	PRECISION 562 (25') (RKB)	:TVD REFERENCE POINT
LCLREFPT	.	slot	:LOCAL COORDINATE REFERENCE PT
VSAZIMUTH.deg		265.03	:VERTICAL SECTION AZIMUTH
VSORIGN .ft		0.00	:VERTICAL SECTION ORIGIN NORTH
VSORIGE .ft		0.00	:VERTICAL SECTION ORIGIN EAST

~CURVE (WELLPATH) INFORMATION

#MNEM	.UNITS	:DESCRIPTION
#----	.-----	:-----
DEPT	.ft	:MEASURED DEPTH
INC	.deg	:INCLINATION
AZI	.deg	:AZIMUTH

## GOETZEL\_12N-30A-M\_REV-A.0\_PWP.1as

TVD .ft :TRUE VERTICAL DEPTH  
 SECT .ft :CROSS SECTION (CURTAIN/VERTICAL)  
 LOCALN .ft :LOCAL NORTH  
 LOCALE .ft :LOCAL EAST  
 LAT .deg :LATITUDE  
 LONG .deg :LONGITUDE  
 DLS .deg/100ft :DOGLEG SEVERITY

## ~ASCII DATA

0.00	0.00	101.34	0.00	0.00	0.00	0.00	40.4579281	-104.8041361	0.00
25.00	0.00	101.34	25.00	0.00	0.00	0.00	40.4579281	-104.8041361	0.00
125.00	0.00	101.34	125.00	0.00	0.00	0.00	40.4579281	-104.8041361	0.00
225.00	0.00	101.34	225.00	0.00	0.00	0.00	40.4579281	-104.8041361	0.00
325.00	0.00	101.34	325.00	0.00	0.00	0.00	40.4579281	-104.8041361	0.00
425.00	0.00	101.34	425.00	0.00	0.00	0.00	40.4579281	-104.8041361	0.00
525.00	0.00	101.34	525.00	0.00	0.00	0.00	40.4579281	-104.8041361	0.00
625.00	0.00	101.34	625.00	0.00	0.00	0.00	40.4579281	-104.8041361	0.00
725.00	0.00	101.34	725.00	0.00	0.00	0.00	40.4579281	-104.8041361	0.00
825.00	0.00	101.34	825.00	0.00	0.00	0.00	40.4579281	-104.8041361	0.00
925.00	0.00	101.34	925.00	0.00	0.00	0.00	40.4579281	-104.8041361	0.00
1025.00	0.00	101.34	1025.00	0.00	0.00	0.00	40.4579281	-104.8041361	0.00
1125.00	0.00	101.34	1125.00	0.00	0.00	0.00	40.4579281	-104.8041361	0.00
1225.00	0.00	101.34	1225.00	0.00	0.00	0.00	40.4579281	-104.8041361	0.00
1325.00	0.00	101.34	1325.00	0.00	0.00	0.00	40.4579281	-104.8041361	0.00
1425.00	0.00	101.34	1425.00	0.00	0.00	0.00	40.4579281	-104.8041361	0.00
1450.00	0.00	101.34	1450.00	0.00	0.00	0.00	40.4579281	-104.8041361	0.00
1525.00	1.50	101.34	1524.99	-0.94	-0.19	0.96	40.4579275	-104.8041327	2.00
1625.00	3.50	101.34	1624.89	-5.13	-1.05	5.24	40.4579252	-104.8041173	2.00
1725.00	5.50	101.34	1724.58	-12.66	-2.59	12.93	40.4579209	-104.8040896	2.00
1825.00	7.50	101.34	1823.93	-23.52	-4.82	24.03	40.4579148	-104.8040498	2.00
1925.00	9.50	101.34	1922.83	-37.71	-7.73	38.52	40.4579068	-104.8039977	2.00
2025.00	11.50	101.34	2021.15	-55.20	-11.31	56.39	40.4578970	-104.8039335	2.00
2125.00	13.50	101.34	2118.77	-75.97	-15.57	77.61	40.4578853	-104.8038572	2.00
2225.00	15.50	101.34	2215.58	-100.00	-20.49	102.16	40.4578718	-104.8037690	2.00
2294.09	16.88	101.34	2281.93	-118.49	-24.28	121.04	40.4578614	-104.8037011	2.00
2325.00	16.88	101.34	2311.51	-127.10	-26.05	129.84	40.4578566	-104.8036695	0.00
2425.00	16.88	101.34	2407.20	-154.97	-31.76	158.32	40.4578409	-104.8035672	0.00
2525.00	16.88	101.34	2502.89	-182.84	-37.47	186.79	40.4578252	-104.8034649	0.00
2625.00	16.88	101.34	2598.58	-210.72	-43.19	215.26	40.4578095	-104.8033626	0.00
2725.00	16.88	101.34	2694.27	-238.59	-48.90	243.73	40.4577938	-104.8032603	0.00
2825.00	16.88	101.34	2789.96	-266.46	-54.61	272.21	40.4577782	-104.8031579	0.00
2925.00	16.88	101.34	2885.65	-294.33	-60.32	300.68	40.4577625	-104.8030556	0.00
3025.00	16.88	101.34	2981.34	-322.20	-66.03	329.15	40.4577468	-104.8029533	0.00
3125.00	16.88	101.34	3077.03	-350.07	-71.75	357.62	40.4577311	-104.8028510	0.00

GOETZEL\_12N-30A-M\_REV-A.0\_PWP.1as

3225.00	16.88	101.34	3172.72	-377.94	-77.46	386.10	40.4577154	-104.8027487	0.00
3325.00	16.88	101.34	3268.41	-405.81	-83.17	414.57	40.4576998	-104.8026464	0.00
3425.00	16.88	101.34	3364.10	-433.69	-88.88	443.04	40.4576841	-104.8025441	0.00
3525.00	16.88	101.34	3459.79	-461.56	-94.60	471.51	40.4576684	-104.8024418	0.00
3625.00	16.88	101.34	3555.49	-489.43	-100.31	499.99	40.4576527	-104.8023394	0.00
3725.00	16.88	101.34	3651.18	-517.30	-106.02	528.46	40.4576370	-104.8022371	0.00
3825.00	16.88	101.34	3746.87	-545.17	-111.73	556.93	40.4576213	-104.8021348	0.00
3925.00	16.88	101.34	3842.56	-573.04	-117.44	585.40	40.4576057	-104.8020325	0.00
4025.00	16.88	101.34	3938.25	-600.91	-123.16	613.88	40.4575900	-104.8019302	0.00
4125.00	16.88	101.34	4033.94	-628.78	-128.87	642.35	40.4575743	-104.8018279	0.00
4225.00	16.88	101.34	4129.63	-656.65	-134.58	670.82	40.4575586	-104.8017256	0.00
4325.00	16.88	101.34	4225.32	-684.53	-140.29	699.29	40.4575429	-104.8016232	0.00
4425.00	16.88	101.34	4321.01	-712.40	-146.01	727.77	40.4575273	-104.8015209	0.00
4525.00	16.88	101.34	4416.70	-740.27	-151.72	756.24	40.4575116	-104.8014186	0.00
4625.00	16.88	101.34	4512.39	-768.14	-157.43	784.71	40.4574959	-104.8013163	0.00
4725.00	16.88	101.34	4608.08	-796.01	-163.14	813.18	40.4574802	-104.8012140	0.00
4825.00	16.88	101.34	4703.77	-823.88	-168.85	841.66	40.4574645	-104.8011117	0.00
4925.00	16.88	101.34	4799.46	-851.75	-174.57	870.13	40.4574489	-104.8010094	0.00
5025.00	16.88	101.34	4895.15	-879.62	-180.28	898.60	40.4574332	-104.8009070	0.00
5125.00	16.88	101.34	4990.84	-907.49	-185.99	927.07	40.4574175	-104.8008047	0.00
5225.00	16.88	101.34	5086.54	-935.37	-191.70	955.55	40.4574018	-104.8007024	0.00
5325.00	16.88	101.34	5182.23	-963.24	-197.42	984.02	40.4573861	-104.8006001	0.00
5425.00	16.88	101.34	5277.92	-991.11	-203.13	1012.49	40.4573704	-104.8004978	0.00
5525.00	16.88	101.34	5373.61	-1018.98	-208.84	1040.96	40.4573548	-104.8003955	0.00
5625.00	16.88	101.34	5469.30	-1046.85	-214.55	1069.44	40.4573391	-104.8002932	0.00
5725.00	16.88	101.34	5564.99	-1074.72	-220.26	1097.91	40.4573234	-104.8001909	0.00
5825.00	16.88	101.34	5660.68	-1102.59	-225.98	1126.38	40.4573077	-104.8000885	0.00
5925.00	16.88	101.34	5756.37	-1130.46	-231.69	1154.85	40.4572920	-104.7999862	0.00
6025.00	16.88	101.34	5852.06	-1158.34	-237.40	1183.32	40.4572763	-104.7998839	0.00
6088.77	16.88	101.34	5913.08	-1176.11	-241.04	1201.48	40.4572663	-104.7998187	0.00
6125.00	14.09	104.28	5947.99	-1185.32	-243.17	1210.92	40.4572605	-104.7997848	8.00
6225.00	6.85	124.35	6046.29	-1201.46	-249.55	1227.66	40.4572430	-104.7997246	8.00
6325.00	4.81	209.12	6145.92	-1203.73	-256.59	1230.55	40.4572237	-104.7997142	8.00
6425.00	11.28	246.55	6244.94	-1192.09	-264.15	1219.53	40.4572029	-104.7997538	8.00
6525.00	18.94	255.58	6341.42	-1166.76	-272.10	1194.80	40.4571811	-104.7998427	8.00
6625.00	26.80	259.49	6433.49	-1128.25	-280.27	1156.85	40.4571587	-104.7999791	8.00
6725.00	34.72	261.71	6519.36	-1077.29	-288.50	1106.41	40.4571361	-104.8001603	8.00
6825.00	42.67	263.19	6597.34	-1014.88	-296.63	1044.48	40.4571138	-104.8003829	8.00
6925.00	50.63	264.28	6665.93	-942.25	-304.52	972.25	40.4570921	-104.8006424	8.00
7025.00	58.60	265.15	6723.79	-860.79	-311.99	891.13	40.4570716	-104.8009339	8.00
7125.00	66.57	265.88	6769.80	-772.09	-318.91	802.71	40.4570526	-104.8012517	8.00
7225.00	74.55	266.52	6803.05	-677.89	-325.15	708.69	40.4570355	-104.8015895	8.00
7325.00	82.53	267.12	6822.90	-580.01	-330.57	610.91	40.4570207	-104.8019408	8.00
7418.63	90.00	267.66	6829.00	-486.72	-334.82	517.64	40.4570090	-104.8022760	8.00

GOETZEL_12N-30A-M_REV-A.0_PWP.1as									
7425.00	90.00	267.66	6829.00	-480.36	-335.08	511.28	40.4570083	-104.8022989	0.00
7525.00	90.00	267.66	6829.00	-380.46	-339.17	411.36	40.4569971	-104.8026579	0.00
7625.00	90.00	267.66	6829.00	-280.57	-343.25	311.45	40.4569859	-104.8030170	0.00
7725.00	90.00	267.66	6829.00	-180.67	-347.34	211.53	40.4569747	-104.8033760	0.00
7825.00	90.00	267.66	6829.00	-80.78	-351.42	111.61	40.4569634	-104.8037350	0.00
7925.00	90.00	267.66	6829.00	19.12	-355.51	11.70	40.4569522	-104.8040941	0.00
8025.00	90.00	267.66	6829.00	119.01	-359.59	-88.22	40.4569410	-104.8044531	0.00
8125.00	90.00	267.66	6829.00	218.91	-363.68	-188.13	40.4569298	-104.8048122	0.00
8225.00	90.00	267.66	6829.00	318.80	-367.76	-288.05	40.4569186	-104.8051712	0.00
8325.00	90.00	267.66	6829.00	418.70	-371.85	-387.97	40.4569074	-104.8055302	0.00
8425.00	90.00	267.66	6829.00	518.59	-375.93	-487.88	40.4568962	-104.8058893	0.00
8525.00	90.00	267.66	6829.00	618.49	-380.02	-587.80	40.4568849	-104.8062483	0.00
8625.00	90.00	267.66	6829.00	718.38	-384.10	-687.72	40.4568737	-104.8066074	0.00
8725.00	90.00	267.66	6829.00	818.28	-388.19	-787.63	40.4568625	-104.8069664	0.00
8825.00	90.00	267.66	6829.00	918.17	-392.27	-887.55	40.4568513	-104.8073254	0.00
8925.00	90.00	267.66	6829.00	1018.07	-396.36	-987.47	40.4568400	-104.8076845	0.00
9025.00	90.00	267.66	6829.00	1117.96	-400.44	-1087.38	40.4568288	-104.8080435	0.00
9125.00	90.00	267.66	6829.00	1217.86	-404.53	-1187.30	40.4568176	-104.8084026	0.00
9225.00	90.00	267.66	6829.00	1317.75	-408.62	-1287.22	40.4568064	-104.8087616	0.00
9325.00	90.00	267.66	6829.00	1417.65	-412.70	-1387.13	40.4567951	-104.8091206	0.00
9425.00	90.00	267.66	6829.00	1517.54	-416.79	-1487.05	40.4567839	-104.8094797	0.00
9525.00	90.00	267.66	6829.00	1617.44	-420.87	-1586.97	40.4567727	-104.8098387	0.00
9625.00	90.00	267.66	6829.00	1717.33	-424.96	-1686.88	40.4567614	-104.8101978	0.00
9725.00	90.00	267.66	6829.00	1817.23	-429.04	-1786.80	40.4567502	-104.8105568	0.00
9825.00	90.00	267.66	6829.00	1917.12	-433.13	-1886.72	40.4567390	-104.8109158	0.00
9925.00	90.00	267.66	6829.00	2017.02	-437.21	-1986.63	40.4567277	-104.8112749	0.00
10025.00	90.00	267.66	6829.00	2116.91	-441.30	-2086.55	40.4567165	-104.8116339	0.00
10125.00	90.00	267.66	6829.00	2216.81	-445.38	-2186.47	40.4567053	-104.8119929	0.00
10225.00	90.00	267.66	6829.00	2316.70	-449.47	-2286.38	40.4566940	-104.8123520	0.00
10325.00	90.00	267.66	6829.00	2416.60	-453.55	-2386.30	40.4566828	-104.8127110	0.00
10425.00	90.00	267.66	6829.00	2516.50	-457.64	-2486.21	40.4566716	-104.8130701	0.00
10525.00	90.00	267.66	6829.00	2616.39	-461.72	-2586.13	40.4566603	-104.8134291	0.00
10625.00	90.00	267.66	6829.00	2716.29	-465.81	-2686.05	40.4566491	-104.8137881	0.00
10725.00	90.00	267.66	6829.00	2816.18	-469.89	-2785.96	40.4566378	-104.8141472	0.00
10825.00	90.00	267.66	6829.00	2916.08	-473.98	-2885.88	40.4566266	-104.8145062	0.00
10925.00	90.00	267.66	6829.00	3015.97	-478.06	-2985.80	40.4566153	-104.8148653	0.00
11025.00	90.00	267.66	6829.00	3115.87	-482.15	-3085.71	40.4566041	-104.8152243	0.00
11125.00	90.00	267.66	6829.00	3215.76	-486.23	-3185.63	40.4565928	-104.8155833	0.00
11225.00	90.00	267.66	6829.00	3315.66	-490.32	-3285.55	40.4565816	-104.8159424	0.00
11325.00	90.00	267.66	6829.00	3415.55	-494.40	-3385.46	40.4565703	-104.8163014	0.00
11425.00	90.00	267.66	6829.00	3515.45	-498.49	-3485.38	40.4565591	-104.8166604	0.00
11525.00	90.00	267.66	6829.00	3615.34	-502.58	-3585.30	40.4565478	-104.8170195	0.00
11625.00	90.00	267.66	6829.00	3715.24	-506.66	-3685.21	40.4565366	-104.8173785	0.00
11725.00	90.00	267.66	6829.00	3815.13	-510.75	-3785.13	40.4565253	-104.8177376	0.00

GOETZEL_12N-30A-M_REV-A.0_PWP.1as									
11825.00	90.00	267.66	6829.00	3915.03	-514.83	-3885.05	40.4565141	-104.8180966	0.00
11925.00	90.00	267.66	6829.00	4014.92	-518.92	-3984.96	40.4565028	-104.8184556	0.00
12025.00	90.00	267.66	6829.00	4114.82	-523.00	-4084.88	40.4564916	-104.8188147	0.00
12125.00	90.00	267.66	6829.00	4214.71	-527.09	-4184.80	40.4564803	-104.8191737	0.00
12225.00	90.00	267.66	6829.00	4314.61	-531.17	-4284.71	40.4564690	-104.8195327	0.00
12325.00	90.00	267.66	6829.00	4414.50	-535.26	-4384.63	40.4564578	-104.8198918	0.00
12425.00	90.00	267.66	6829.00	4514.40	-539.34	-4484.55	40.4564465	-104.8202508	0.00
12525.00	90.00	267.66	6829.00	4614.29	-543.43	-4584.46	40.4564352	-104.8206098	0.00
12625.00	90.00	267.66	6829.00	4714.19	-547.51	-4684.38	40.4564240	-104.8209689	0.00
12725.00	90.00	267.66	6829.00	4814.08	-551.60	-4784.29	40.4564127	-104.8213279	0.00
12825.00	90.00	267.66	6829.00	4913.98	-555.68	-4884.21	40.4564014	-104.8216869	0.00
12925.00	90.00	267.66	6829.00	5013.87	-559.77	-4984.13	40.4563902	-104.8220460	0.00
13025.00	90.00	267.66	6829.00	5113.77	-563.85	-5084.04	40.4563789	-104.8224050	0.00
13125.00	90.00	267.66	6829.00	5213.66	-567.94	-5183.96	40.4563676	-104.8227641	0.00
13225.00	90.00	267.66	6829.00	5313.56	-572.02	-5283.88	40.4563564	-104.8231231	0.00
13325.00	90.00	267.66	6829.00	5413.45	-576.11	-5383.79	40.4563451	-104.8234821	0.00
13425.00	90.00	267.66	6829.00	5513.35	-580.19	-5483.71	40.4563338	-104.8238412	0.00
13525.00	90.00	267.66	6829.00	5613.24	-584.28	-5583.63	40.4563225	-104.8242002	0.00
13625.00	90.00	267.66	6829.00	5713.14	-588.37	-5683.54	40.4563113	-104.8245592	0.00
13725.00	90.00	267.66	6829.00	5813.03	-592.45	-5783.46	40.4563000	-104.8249183	0.00
13825.00	90.00	267.66	6829.00	5912.93	-596.54	-5883.38	40.4562887	-104.8252773	0.00
13925.00	90.00	267.66	6829.00	6012.82	-600.62	-5983.29	40.4562774	-104.8256363	0.00
14025.00	90.00	267.66	6829.00	6112.72	-604.71	-6083.21	40.4562662	-104.8259954	0.00
14125.00	90.00	267.66	6829.00	6212.62	-608.79	-6183.13	40.4562549	-104.8263544	0.00
14225.00	90.00	267.66	6829.00	6312.51	-612.88	-6283.04	40.4562436	-104.8267134	0.00
14325.00	90.00	267.66	6829.00	6412.41	-616.96	-6382.96	40.4562323	-104.8270725	0.00
14425.00	90.00	267.66	6829.00	6512.30	-621.05	-6482.88	40.4562210	-104.8274315	0.00
14525.00	90.00	267.66	6829.00	6612.20	-625.13	-6582.79	40.4562097	-104.8277905	0.00
14625.00	90.00	267.66	6829.00	6712.09	-629.22	-6682.71	40.4561985	-104.8281496	0.00
14725.00	90.00	267.66	6829.00	6811.99	-633.30	-6782.63	40.4561872	-104.8285086	0.00
14825.00	90.00	267.66	6829.00	6911.88	-637.39	-6882.54	40.4561759	-104.8288676	0.00
14925.00	90.00	267.66	6829.00	7011.78	-641.47	-6982.46	40.4561646	-104.8292267	0.00
15025.00	90.00	267.66	6829.00	7111.67	-645.56	-7082.37	40.4561533	-104.8295857	0.00
15125.00	90.00	267.66	6829.00	7211.57	-649.64	-7182.29	40.4561420	-104.8299447	0.00
15225.00	90.00	267.66	6829.00	7311.46	-653.73	-7282.21	40.4561307	-104.8303038	0.00
15325.00	90.00	267.66	6829.00	7411.36	-657.81	-7382.12	40.4561194	-104.8306628	0.00
15425.00	90.00	267.66	6829.00	7511.25	-661.90	-7482.04	40.4561081	-104.8310218	0.00
15525.00	90.00	267.66	6829.00	7611.15	-665.98	-7581.96	40.4560968	-104.8313809	0.00
15625.00	90.00	267.66	6829.00	7711.04	-670.07	-7681.87	40.4560855	-104.8317399	0.00
15682.69	90.00	267.66	6829.00	7768.67	-672.43	-7739.51	40.4560790	-104.8319470	0.00



# Planned Wellpath Report

GOETZEL 12N-30A-M REV-A.0 PWP

Page 1 of 8



## REFERENCE WELLPATH IDENTIFICATION

Operator	SYNERGY RESOURCES CORPORATION	Slot	SLOT#16 GOETZEL 12N-30A-M (2257'FSL & 2053'FWL, SEC.29)
Area	COLORADO	Well	GOETZEL 12N-30A-M
Field	WELD COUNTY (NAD83,TRUE NORTH)	Wellbore	GOETZEL 12N-30A-M PWB
Facility	SEC.29-T06N-R66W		

## REPORT SETUP INFORMATION

Projection System	NAD83 / Lambert Colorado SP, Northern Zone (501), US feet	Software System	WellArchitect® 5.0
North Reference	True	User	Wagnjam
Scale	0.999963	Report Generated	2/27/2017 at 5:21:03 PM
Convergence at slot	0.45° East	Database/Source file	WA_DEN_Denver_Defn/GOETZEL_12N-30A-M_REV-A.0_PWP.xml

## WELLPATH LOCATION

	Local coordinates		Grid coordinates		Geographic coordinates	
	North[ft]	East[ft]	Easting[US ft]	Northing[US ft]	Latitude	Longitude
Slot Location	-1242.30	-821.79	3193637.71	1410423.32	40°27'28.541"N	104°48'14.890"W
Facility Reference Pt			3194449.65	1411672.01	40°27'40.817"N	104°48'04.259"W
Field Reference Pt			3171284.48	1426358.81	40°30'07.643"N	104°53'02.634"W

## WELLPATH DATUM

Calculation method	Minimum curvature	PRECISION 562 (25') (RKB) to Facility Vertical Datum	4757.00ft
Horizontal Reference Pt	Slot	PRECISION 562 (25') (RKB) to Mean Sea Level	4757.00ft
Vertical Reference Pt	PRECISION 562 (25') (RKB)	PRECISION 562 (25') (RKB) to Mud Line at Slot (SLOT#16 GOETZEL 12N-30A-M (2257'FSL & 2053'FWL, SEC.29))	4757.00ft
MD Reference Pt	PRECISION 562 (25') (RKB)	Section Origin	N 0.00, E 0.00 ft
Field Vertical Reference	Mean Sea Level	Section Azimuth	265.03°





# Planned Wellpath Report

GOETZEL 12N-30A-M REV-A.0 PWP

Page 2 of 8



## REFERENCE WELLPATH IDENTIFICATION

Operator	SYNERGY RESOURCES CORPORATION	Slot	SLOT#16 GOETZEL 12N-30A-M (2257'FSL & 2053'FWL, SEC.29)
Area	COLORADO	Well	GOETZEL 12N-30A-M
Field	WELD COUNTY (NAD83,TRUE NORTH)	Wellbore	GOETZEL 12N-30A-M PWB
Facility	SEC.29-T06N-R66W		

## WELLPATH DATA (163 stations) † = interpolated/extrapolated station

MD [ft]	Inclination [°]	Azimuth [°]	TVD [ft]	Vert Sect [ft]	North [ft]	East [ft]	DLS [°/100ft]	Comments
0.00†	0.000	101.344	0.00	0.00	0.00	0.00	0.00	
25.00	0.000	101.344	25.00	0.00	0.00	0.00	0.00	Tie On
125.00†	0.000	101.344	125.00	0.00	0.00	0.00	0.00	
225.00†	0.000	101.344	225.00	0.00	0.00	0.00	0.00	
325.00†	0.000	101.344	325.00	0.00	0.00	0.00	0.00	
425.00†	0.000	101.344	425.00	0.00	0.00	0.00	0.00	
525.00†	0.000	101.344	525.00	0.00	0.00	0.00	0.00	
625.00†	0.000	101.344	625.00	0.00	0.00	0.00	0.00	
725.00†	0.000	101.344	725.00	0.00	0.00	0.00	0.00	
825.00†	0.000	101.344	825.00	0.00	0.00	0.00	0.00	
925.00†	0.000	101.344	925.00	0.00	0.00	0.00	0.00	
1025.00†	0.000	101.344	1025.00	0.00	0.00	0.00	0.00	
1125.00†	0.000	101.344	1125.00	0.00	0.00	0.00	0.00	
1225.00†	0.000	101.344	1225.00	0.00	0.00	0.00	0.00	
1325.00†	0.000	101.344	1325.00	0.00	0.00	0.00	0.00	
1425.00†	0.000	101.344	1425.00	0.00	0.00	0.00	0.00	
1450.00	0.000	101.344	1450.00	0.00	0.00	0.00	0.00	End of Tangent
1525.00†	1.500	101.344	1524.99	-0.94	-0.19	0.96	2.00	
1625.00†	3.500	101.344	1624.89	-5.13	-1.05	5.24	2.00	
1725.00†	5.500	101.344	1724.58	-12.66	-2.59	12.93	2.00	
1825.00†	7.500	101.344	1823.93	-23.52	-4.82	24.03	2.00	
1925.00†	9.500	101.344	1922.83	-37.71	-7.73	38.52	2.00	
2025.00†	11.500	101.344	2021.15	-55.20	-11.31	56.39	2.00	
2125.00†	13.500	101.344	2118.77	-75.97	-15.57	77.61	2.00	
2225.00†	15.500	101.344	2215.58	-100.00	-20.49	102.16	2.00	
2294.09	16.882	101.344	2281.93	-118.49	-24.28	121.04	2.00	End of Build
2325.00†	16.882	101.344	2311.51	-127.10	-26.05	129.84	0.00	
2425.00†	16.882	101.344	2407.20	-154.97	-31.76	158.32	0.00	
2525.00†	16.882	101.344	2502.89	-182.84	-37.47	186.79	0.00	
2625.00†	16.882	101.344	2598.58	-210.72	-43.19	215.26	0.00	



# Planned Wellpath Report

GOETZEL 12N-30A-M REV-A.0 PWP

Page 3 of 8



## REFERENCE WELLPATH IDENTIFICATION

Operator	SYNERGY RESOURCES CORPORATION	Slot	SLOT#16 GOETZEL 12N-30A-M (2257'FSL & 2053'FWL, SEC.29)
Area	COLORADO	Well	GOETZEL 12N-30A-M
Field	WELD COUNTY (NAD83,TRUE NORTH)	Wellbore	GOETZEL 12N-30A-M PWB
Facility	SEC.29-T06N-R66W		

## WELLPATH DATA (163 stations) † = interpolated/extrapolated station

MD [ft]	Inclination [°]	Azimuth [°]	TVD [ft]	Vert Sect [ft]	North [ft]	East [ft]	DLS [°/100ft]	Comments
2725.00†	16.882	101.344	2694.27	-238.59	-48.90	243.73	0.00	
2825.00†	16.882	101.344	2789.96	-266.46	-54.61	272.21	0.00	
2925.00†	16.882	101.344	2885.65	-294.33	-60.32	300.68	0.00	
3025.00†	16.882	101.344	2981.34	-322.20	-66.03	329.15	0.00	
3125.00†	16.882	101.344	3077.03	-350.07	-71.75	357.62	0.00	
3225.00†	16.882	101.344	3172.72	-377.94	-77.46	386.10	0.00	
3325.00†	16.882	101.344	3268.41	-405.81	-83.17	414.57	0.00	
3425.00†	16.882	101.344	3364.10	-433.69	-88.88	443.04	0.00	
3525.00†	16.882	101.344	3459.79	-461.56	-94.60	471.51	0.00	
3625.00†	16.882	101.344	3555.49	-489.43	-100.31	499.99	0.00	
3725.00†	16.882	101.344	3651.18	-517.30	-106.02	528.46	0.00	
3825.00†	16.882	101.344	3746.87	-545.17	-111.73	556.93	0.00	
3925.00†	16.882	101.344	3842.56	-573.04	-117.44	585.40	0.00	
4025.00†	16.882	101.344	3938.25	-600.91	-123.16	613.88	0.00	
4125.00†	16.882	101.344	4033.94	-628.78	-128.87	642.35	0.00	
4225.00†	16.882	101.344	4129.63	-656.65	-134.58	670.82	0.00	
4325.00†	16.882	101.344	4225.32	-684.53	-140.29	699.29	0.00	
4425.00†	16.882	101.344	4321.01	-712.40	-146.01	727.77	0.00	
4525.00†	16.882	101.344	4416.70	-740.27	-151.72	756.24	0.00	
4625.00†	16.882	101.344	4512.39	-768.14	-157.43	784.71	0.00	
4725.00†	16.882	101.344	4608.08	-796.01	-163.14	813.18	0.00	
4825.00†	16.882	101.344	4703.77	-823.88	-168.85	841.66	0.00	
4925.00†	16.882	101.344	4799.46	-851.75	-174.57	870.13	0.00	
5025.00†	16.882	101.344	4895.15	-879.62	-180.28	898.60	0.00	
5125.00†	16.882	101.344	4990.84	-907.49	-185.99	927.07	0.00	
5225.00†	16.882	101.344	5086.54	-935.37	-191.70	955.55	0.00	
5325.00†	16.882	101.344	5182.23	-963.24	-197.42	984.02	0.00	
5425.00†	16.882	101.344	5277.92	-991.11	-203.13	1012.49	0.00	
5525.00†	16.882	101.344	5373.61	-1018.98	-208.84	1040.96	0.00	
5625.00†	16.882	101.344	5469.30	-1046.85	-214.55	1069.44	0.00	



# Planned Wellpath Report

GOETZEL 12N-30A-M REV-A.0 PWP

Page 4 of 8



## REFERENCE WELLPATH IDENTIFICATION

Operator	SYNERGY RESOURCES CORPORATION	Slot	SLOT#16 GOETZEL 12N-30A-M (2257'FSL & 2053'FWL, SEC.29)
Area	COLORADO	Well	GOETZEL 12N-30A-M
Field	WELD COUNTY (NAD83,TRUE NORTH)	Wellbore	GOETZEL 12N-30A-M PWB
Facility	SEC.29-T06N-R66W		

## WELLPATH DATA (163 stations) † = interpolated/extrapolated station

MD [ft]	Inclination [°]	Azimuth [°]	TVD [ft]	Vert Sect [ft]	North [ft]	East [ft]	DLS [°/100ft]	Comments
5725.00†	16.882	101.344	5564.99	-1074.72	-220.26	1097.91	0.00	
5825.00†	16.882	101.344	5660.68	-1102.59	-225.98	1126.38	0.00	
5925.00†	16.882	101.344	5756.37	-1130.46	-231.69	1154.85	0.00	
6025.00†	16.882	101.344	5852.06	-1158.34	-237.40	1183.32	0.00	
6088.77	16.882	101.344	5913.08	-1176.11	-241.04	1201.48	0.00	End of Tangent
6125.00†	14.091	104.280	5947.99	-1185.32	-243.17	1210.92	8.00	
6225.00†	6.853	124.347	6046.29	-1201.46	-249.55	1227.66	8.00	
6325.00†	4.812	209.124	6145.92	-1203.73	-256.59	1230.55	8.00	
6425.00†	11.275	246.550	6244.94	-1192.09	-264.15	1219.53	8.00	
6525.00†	18.944	255.584	6341.42	-1166.76	-272.10	1194.80	8.00	
6625.00†	26.803	259.488	6433.49	-1128.25	-280.27	1156.85	8.00	
6725.00†	34.723	261.712	6519.36	-1077.29	-288.50	1106.41	8.00	
6825.00†	42.670	263.191	6597.34	-1014.88	-296.63	1044.48	8.00	
6925.00†	50.631	264.281	6665.93	-942.25	-304.52	972.25	8.00	
7025.00†	58.600	265.147	6723.79	-860.79	-311.99	891.13	8.00	
7125.00†	66.573	265.876	6769.80	-772.09	-318.91	802.71	8.00	
7225.00†	74.550	266.522	6803.05	-677.89	-325.15	708.69	8.00	
7325.00†	82.529	267.119	6822.90	-580.01	-330.57	610.91	8.00	
7418.63	90.000	267.659	6829.00 <sup>†</sup>	-486.72	-334.82	517.64	8.00	End of 3D Arc
7425.00†	90.000	267.659	6829.00	-480.36	-335.08	511.28	0.00	
7525.00†	90.000	267.659	6829.00	-380.46	-339.17	411.36	0.00	
7625.00†	90.000	267.659	6829.00	-280.57	-343.25	311.45	0.00	
7725.00†	90.000	267.659	6829.00	-180.67	-347.34	211.53	0.00	
7825.00†	90.000	267.659	6829.00	-80.78	-351.42	111.61	0.00	
7925.00†	90.000	267.659	6829.00	19.12	-355.51	11.70	0.00	
8025.00†	90.000	267.659	6829.00	119.01	-359.59	-88.22	0.00	
8125.00†	90.000	267.659	6829.00	218.91	-363.68	-188.13	0.00	
8225.00†	90.000	267.659	6829.00	318.80	-367.76	-288.05	0.00	
8325.00†	90.000	267.659	6829.00	418.70	-371.85	-387.97	0.00	
8425.00†	90.000	267.659	6829.00	518.59	-375.93	-487.88	0.00	



# Planned Wellpath Report

GOETZEL 12N-30A-M REV-A.0 PWP

Page 5 of 8



## REFERENCE WELLPATH IDENTIFICATION

Operator	SYNERGY RESOURCES CORPORATION	Slot	SLOT#16 GOETZEL 12N-30A-M (2257'FSL & 2053'FWL, SEC.29)
Area	COLORADO	Well	GOETZEL 12N-30A-M
Field	WELD COUNTY (NAD83,TRUE NORTH)	Wellbore	GOETZEL 12N-30A-M PWB
Facility	SEC.29-T06N-R66W		

## WELLPATH DATA (163 stations) † = interpolated/extrapolated station

MD [ft]	Inclination [°]	Azimuth [°]	TVD [ft]	Vert Sect [ft]	North [ft]	East [ft]	DLS [°/100ft]	Comments
8525.00†	90.000	267.659	6829.00	618.49	-380.02	-587.80	0.00	
8625.00†	90.000	267.659	6829.00	718.38	-384.10	-687.72	0.00	
8725.00†	90.000	267.659	6829.00	818.28	-388.19	-787.63	0.00	
8825.00†	90.000	267.659	6829.00	918.17	-392.27	-887.55	0.00	
8925.00†	90.000	267.659	6829.00	1018.07	-396.36	-987.47	0.00	
9025.00†	90.000	267.659	6829.00	1117.96	-400.44	-1087.38	0.00	
9125.00†	90.000	267.659	6829.00	1217.86	-404.53	-1187.30	0.00	
9225.00†	90.000	267.659	6829.00	1317.75	-408.62	-1287.22	0.00	
9325.00†	90.000	267.659	6829.00	1417.65	-412.70	-1387.13	0.00	
9425.00†	90.000	267.659	6829.00	1517.54	-416.79	-1487.05	0.00	
9525.00†	90.000	267.659	6829.00	1617.44	-420.87	-1586.97	0.00	
9625.00†	90.000	267.659	6829.00	1717.33	-424.96	-1686.88	0.00	
9725.00†	90.000	267.659	6829.00	1817.23	-429.04	-1786.80	0.00	
9825.00†	90.000	267.659	6829.00	1917.12	-433.13	-1886.72	0.00	
9925.00†	90.000	267.659	6829.00	2017.02	-437.21	-1986.63	0.00	
10025.00†	90.000	267.659	6829.00	2116.91	-441.30	-2086.55	0.00	
10125.00†	90.000	267.659	6829.00	2216.81	-445.38	-2186.47	0.00	
10225.00†	90.000	267.659	6829.00	2316.70	-449.47	-2286.38	0.00	
10325.00†	90.000	267.659	6829.00	2416.60	-453.55	-2386.30	0.00	
10425.00†	90.000	267.659	6829.00	2516.50	-457.64	-2486.21	0.00	
10525.00†	90.000	267.659	6829.00	2616.39	-461.72	-2586.13	0.00	
10625.00†	90.000	267.659	6829.00	2716.29	-465.81	-2686.05	0.00	
10725.00†	90.000	267.659	6829.00	2816.18	-469.89	-2785.96	0.00	
10825.00†	90.000	267.659	6829.00	2916.08	-473.98	-2885.88	0.00	
10925.00†	90.000	267.659	6829.00	3015.97	-478.06	-2985.80	0.00	
11025.00†	90.000	267.659	6829.00	3115.87	-482.15	-3085.71	0.00	
11125.00†	90.000	267.659	6829.00	3215.76	-486.23	-3185.63	0.00	
11225.00†	90.000	267.659	6829.00	3315.66	-490.32	-3285.55	0.00	
11325.00†	90.000	267.659	6829.00	3415.55	-494.40	-3385.46	0.00	
11425.00†	90.000	267.659	6829.00	3515.45	-498.49	-3485.38	0.00	



# Planned Wellpath Report

GOETZEL 12N-30A-M REV-A.0 PWP

Page 6 of 8



## REFERENCE WELLPATH IDENTIFICATION

Operator	SYNERGY RESOURCES CORPORATION	Slot	SLOT#16 GOETZEL 12N-30A-M (2257'FSL & 2053'FWL, SEC.29)
Area	COLORADO	Well	GOETZEL 12N-30A-M
Field	WELD COUNTY (NAD83,TRUE NORTH)	Wellbore	GOETZEL 12N-30A-M PWB
Facility	SEC.29-T06N-R66W		

## WELLPATH DATA (163 stations) † = interpolated/extrapolated station

MD [ft]	Inclination [°]	Azimuth [°]	TVD [ft]	Vert Sect [ft]	North [ft]	East [ft]	DLS [°/100ft]	Comments
11525.00†	90.000	267.659	6829.00	3615.34	-502.58	-3585.30	0.00	
11625.00†	90.000	267.659	6829.00	3715.24	-506.66	-3685.21	0.00	
11725.00†	90.000	267.659	6829.00	3815.13	-510.75	-3785.13	0.00	
11825.00†	90.000	267.659	6829.00	3915.03	-514.83	-3885.05	0.00	
11925.00†	90.000	267.659	6829.00	4014.92	-518.92	-3984.96	0.00	
12025.00†	90.000	267.659	6829.00	4114.82	-523.00	-4084.88	0.00	
12125.00†	90.000	267.659	6829.00	4214.71	-527.09	-4184.80	0.00	
12225.00†	90.000	267.659	6829.00	4314.61	-531.17	-4284.71	0.00	
12325.00†	90.000	267.659	6829.00	4414.50	-535.26	-4384.63	0.00	
12425.00†	90.000	267.659	6829.00	4514.40	-539.34	-4484.55	0.00	
12525.00†	90.000	267.659	6829.00	4614.29	-543.43	-4584.46	0.00	
12625.00†	90.000	267.659	6829.00	4714.19	-547.51	-4684.38	0.00	
12725.00†	90.000	267.659	6829.00	4814.08	-551.60	-4784.29	0.00	
12825.00†	90.000	267.659	6829.00	4913.98	-555.68	-4884.21	0.00	
12925.00†	90.000	267.659	6829.00	5013.87	-559.77	-4984.13	0.00	
13025.00†	90.000	267.659	6829.00	5113.77	-563.85	-5084.04	0.00	
13125.00†	90.000	267.659	6829.00	5213.66	-567.94	-5183.96	0.00	
13225.00†	90.000	267.659	6829.00	5313.56	-572.02	-5283.88	0.00	
13325.00†	90.000	267.659	6829.00	5413.45	-576.11	-5383.79	0.00	
13425.00†	90.000	267.659	6829.00	5513.35	-580.19	-5483.71	0.00	
13525.00†	90.000	267.659	6829.00	5613.24	-584.28	-5583.63	0.00	
13625.00†	90.000	267.659	6829.00	5713.14	-588.37	-5683.54	0.00	
13725.00†	90.000	267.659	6829.00	5813.03	-592.45	-5783.46	0.00	
13825.00†	90.000	267.659	6829.00	5912.93	-596.54	-5883.38	0.00	
13925.00†	90.000	267.659	6829.00	6012.82	-600.62	-5983.29	0.00	
14025.00†	90.000	267.659	6829.00	6112.72	-604.71	-6083.21	0.00	
14125.00†	90.000	267.659	6829.00	6212.62	-608.79	-6183.13	0.00	
14225.00†	90.000	267.659	6829.00	6312.51	-612.88	-6283.04	0.00	
14325.00†	90.000	267.659	6829.00	6412.41	-616.96	-6382.96	0.00	
14425.00†	90.000	267.659	6829.00	6512.30	-621.05	-6482.88	0.00	



# Planned Wellpath Report

GOETZEL 12N-30A-M REV-A.0 PWP

Page 7 of 8



## REFERENCE WELLPATH IDENTIFICATION

Operator	SYNERGY RESOURCES CORPORATION	Slot	SLOT#16 GOETZEL 12N-30A-M (2257'FSL & 2053'FWL, SEC.29)
Area	COLORADO	Well	GOETZEL 12N-30A-M
Field	WELD COUNTY (NAD83,TRUE NORTH)	Wellbore	GOETZEL 12N-30A-M PWB
Facility	SEC.29-T06N-R66W		

## WELLPATH DATA (163 stations) † = interpolated/extrapolated station

MD [ft]	Inclination [°]	Azimuth [°]	TVD [ft]	Vert Sect [ft]	North [ft]	East [ft]	DLS [°/100ft]	Comments
14525.00†	90.000	267.659	6829.00	6612.20	-625.13	-6582.79	0.00	
14625.00†	90.000	267.659	6829.00	6712.09	-629.22	-6682.71	0.00	
14725.00†	90.000	267.659	6829.00	6811.99	-633.30	-6782.63	0.00	
14825.00†	90.000	267.659	6829.00	6911.88	-637.39	-6882.54	0.00	
14925.00†	90.000	267.659	6829.00	7011.78	-641.47	-6982.46	0.00	
15025.00†	90.000	267.659	6829.00	7111.67	-645.56	-7082.37	0.00	
15125.00†	90.000	267.659	6829.00	7211.57	-649.64	-7182.29	0.00	
15225.00†	90.000	267.659	6829.00	7311.46	-653.73	-7282.21	0.00	
15325.00†	90.000	267.659	6829.00	7411.36	-657.81	-7382.12	0.00	
15425.00†	90.000	267.659	6829.00	7511.25	-661.90	-7482.04	0.00	
15525.00†	90.000	267.659	6829.00	7611.15	-665.98	-7581.96	0.00	
15625.00†	90.000	267.659	6829.00	7711.04	-670.07	-7681.87	0.00	
15682.69	90.000	267.659	6829.00 <sup>2</sup>	7768.67	-672.43	-7739.51	0.00	End of Tangent

## HOLE & CASING SECTIONS - Ref Wellbore: GOETZEL 12N-30A-M PWB Ref Wellpath: GOETZEL 12N-30A-M REV-A.0 PWP

String/Diameter	Start MD [ft]	End MD [ft]	Interval [ft]	Start TVD [ft]	End TVD [ft]	Start N/S [ft]	Start E/W [ft]	End N/S [ft]	End E/W [ft]
13.5in Open Hole	25.00	1700.00	1675.00	25.00	1699.68	0.00	0.00	-2.14	10.69
8.5in Open Hole	1700.00	15682.00	13982.00	1699.68	6829.00	-2.14	10.69	-672.40	-7738.83



# Planned Wellpath Report

GOETZEL 12N-30A-M REV-A.0 PWP

Page 8 of 8



## REFERENCE WELLPATH IDENTIFICATION

Operator	SYNERGY RESOURCES CORPORATION	Slot	SLOT#16 GOETZEL 12N-30A-M (2257'FSL & 2053'FWL, SEC.29)
Area	COLORADO	Well	GOETZEL 12N-30A-M
Field	WELD COUNTY (NAD83,TRUE NORTH)	Wellbore	GOETZEL 12N-30A-M PWB
Facility	SEC.29-T06N-R66W		

## TARGETS

Name	MD [ft]	TVD [ft]	North [ft]	East [ft]	Grid East [US ft]	Grid North [US ft]	Latitude	Longitude	Shape
SEC.29-T06N-R66W NORTHERN		9.00	1242.31	821.76	3194449.66	1411671.99	40°27'40.817"N	104°48'04.259"W	polygon
SEC.29-T06N-R66W SOUTHERN		9.00	1242.31	821.76	3194449.66	1411671.99	40°27'40.817"N	104°48'04.259"W	polygon
SEC.30-T06N-R66W NORTHERN		9.00	1242.31	821.76	3194449.66	1411671.99	40°27'40.817"N	104°48'04.259"W	polygon
SEC.30-T06N-R66W SOUTHERN		9.00	1242.31	821.76	3194449.66	1411671.99	40°27'40.817"N	104°48'04.259"W	polygon
GOETZEL 12N-30A-M BHL ON PLAT (1947'FSL & 510'FWL SEC.30)		6829.00	-652.86	-7379.68	3186263.67	1409712.59	40°27'22.079"N	104°49'50.354"W	circle
2) GOETZEL 12N-30A-M BHL REV-1 (1947'FSL & 150'FWL SEC.30)	15682.69	6829.00	-672.43	-7739.51	3185904.01	1409690.20	40°27'21.884"N	104°49'55.009"W	point
1) GOETZEL 12N-30A-M TOP OF PROD REV-1 (1909'FSL & 2572'FWL SEC.29)	7418.63	6829.00	-334.82	517.64	3194157.94	1410092.58	40°27'25.232"N	104°48'08.194"W	circle

## SURVEY PROGRAM - Ref Wellbore: GOETZEL 12N-30A-M PWB Ref Wellpath: GOETZEL 12N-30A-M REV-A.0 PWP

Start MD [ft]	End MD [ft]	Positional Uncertainty Model	Log Name/Comment	Wellbore
25.00	1700.00	Custom BHI NaviTrak (Standard Rotating+Axial Corr) (Rockies 0.03Gt model)		GOETZEL 12N-30A-M PWB
1700.00	15682.69	Custom BHI AutoTrak Curve (IFR1, Short) (Rockies 0.03Gt model)		GOETZEL 12N-30A-M PWB