

SYNERGY RESOURCES CORPORATION

Location: COLORADO Slot: SLOT#15 GOETZEL 12N-30C-M (2277'FSL & 2053'FWL, SEC.29)
Field: WELD COUNTY (NAD83,TRUE NORTH) Well: GOETZEL 12N-30C-M
Facility: SEC.29-T06N-R66W Wellbore: GOETZEL 12N-30C-M PWB

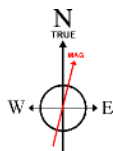
Plot reference wellpath is GOETZEL 12N-30C-M REV-A.0 PWP	Grid System: NAD83 / Lambert Colorado SP, Northern Zone (501), US feet
True vertical depths are referenced to PRECISION 562 (25) (RKB)	* = Wellpath was transformed from a different geodetic datum
Measured depths are referenced to PRECISION 562 (25) (RKB)	North Reference: True north
PRECISION 562 (25) (RKB) to Mean Sea Level: 4757 feet	Scale: True distance
Mean Sea Level to Mud line (At Slot: SLOT#15 GOETZEL 12N-30C-M (2277'FSL & 2053'FWL, SEC.29)): 0 feet	Depths are in feet
Coordinates are in feet referenced to Slot	Created by: wagnjam on 2017-02-27
	Database: WA_DEN_Denver_Deln

Location Information

Facility Name			Grid East (US ft)	Grid North (US ft)	Latitude	Longitude
SEC.29-T06N-R66W			3194449.646	1411672.008	40°27'40.817"N	104°48'04.259"W
Slot	Local N (ft)	Local E (ft)	Grid East (US ft)	Grid North (US ft)	Latitude	Longitude
SLOT#15 GOETZEL 12N-30C-M (2277'FSL & 2053'FWL, SEC.29)	-1222.67	-821.48	3193637.963	1410442.948	40°27'28.735"N	104°48'14.886"W
PRECISION 562 (25) (RKB) to Mud line (At Slot: SLOT#15 GOETZEL 12N-30C-M (2277'FSL & 2053'FWL, SEC.29))					4757ft	
Mean Sea Level to Mud line (At Slot: SLOT#15 GOETZEL 12N-30C-M (2277'FSL & 2053'FWL, SEC.29))					0ft	
PRECISION 562 (25) (RKB) to Mean Sea Level					4757ft	

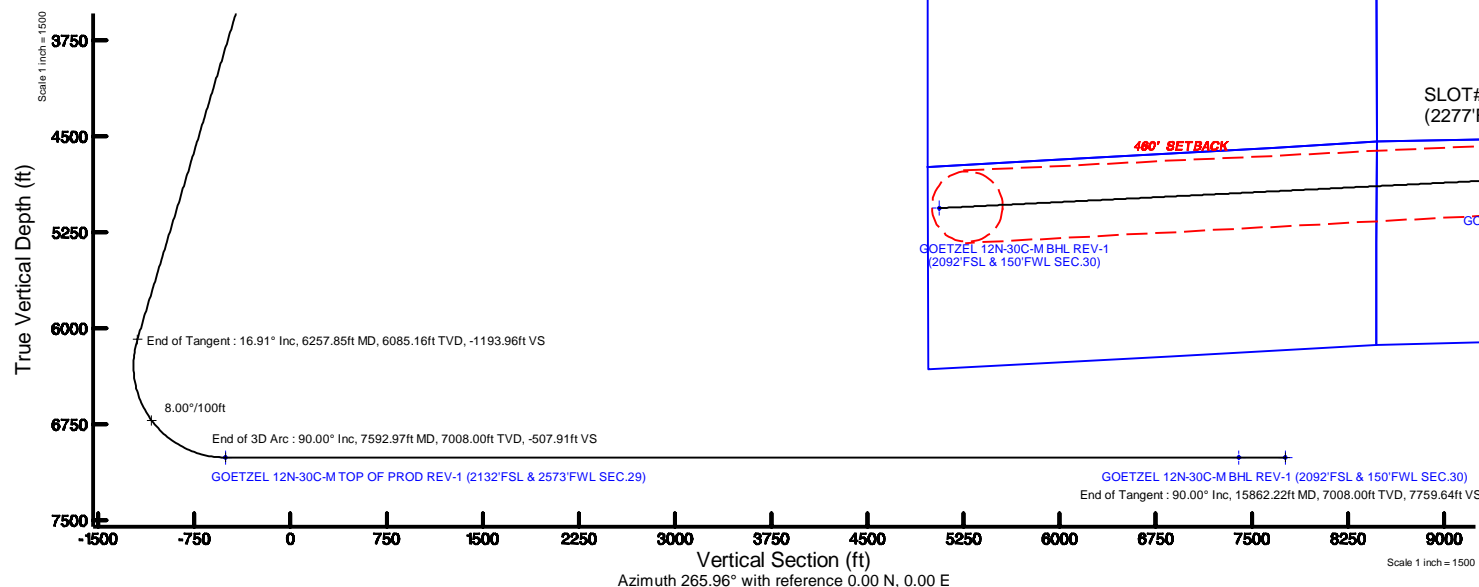
Tie-On Position

MD (ft)	Inc (°)	Az (°)	TVD (ft)	Local N (ft)	Local E (ft)	Grid East (US ft)	Grid North (US ft)	Latitude	Longitude
25.00	0.000	93.191	25.00	0.00	0.00	3193637.86	1410442.95	40°27'28.735"N	104°48'14.886"W



BGGM (1900.0 to 2018.0) Dip: 66.92° Field: 52499.6 nT
Magnetic North is 8.43 degrees East of True North (at 2/22/2017)

To correct azimuth from Magnetic to True add 8.43 degrees



Well Profile Data

Design Comment	MD (ft)	Inc (°)	Az (°)	TVD (ft)	Local N (ft)	Local E (ft)	DLS (°/100ft)	VS (ft)
Tie On	25.00	0.000	93.191	25.00	0.00	0.00	0.00	0.00
End of Tangent	1700.00	0.000	93.191	1700.00	0.00	0.00	0.00	0.00
End of Build	2545.39	16.908	93.191	2533.18	-6.89	123.64	2.00	-122.85
End of Tangent	6257.85	16.908	93.191	6085.16	-67.00	1201.68	0.00	-1193.96
End of 3D Arc	7592.97	90.000	267.117	7008.00	-131.13	518.44	8.00	-507.91
End of Tangent	15862.22	90.000	267.117	7008.00	-547.06	-7740.33	0.00	7759.64

Survey Program

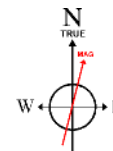
Start MD (ft)	End MD (ft)	Tool	Model	Log Name/Comment	Wellbore
25.00	1700.00	BHI NewTrak	Custom BHI NewTrak (Standard Rotating-Axial Corr) (Rockies 0.03Gr model)		GOETZEL 12N-30C-M PWB
1700.00	15862.22	BHI AutoTrak Curve	Custom BHI AutoTrak Curve (IFR1, Short) (Rockies 0.03Gr model)		GOETZEL 12N-30C-M PWB

Targets

Name	MD (ft)	TVD (ft)	Local N (ft)	Local E (ft)	Grid East (US ft)	Grid North (US ft)	Latitude	Longitude
SEC.29-T06N-R66W-NORTHERN		9.00	1222.68	821.45	3194449.66	1411671.99	40°27'40.817"N	104°48'04.259"W
SEC.29-T06N-R66W-SOUTHERN		9.00	1222.68	821.45	3194449.66	1411671.99	40°27'40.817"N	104°48'04.259"W
SEC.30-T06N-R66W-NORTHERN		9.00	1222.68	821.45	3194449.66	1411671.99	40°27'40.817"N	104°48'04.259"W
SEC.30-T06N-R66W-SOUTHERN		9.00	1222.68	821.45	3194449.66	1411671.99	40°27'40.817"N	104°48'04.259"W
GOETZEL 12N-30C-M-BHL ON PLAT (2092'FSL & 510'FWL SEC.30)		7008.00	-527.13	-7380.22	3196262.29	1409857.94	40°27'23.517"N	104°49'55.016"W
GOETZEL 12N-30C-M-BHL REV-1 (2092'FSL & 150'FWL SEC.30)	15862.22	7008.00	-547.06	-7740.33	3185902.36	1409855.19	40°27'23.517"N	104°49'55.016"W
GOETZEL 12N-30C-M TOP OF PROD REV-1 (2132'FSL & 2573'FWL SEC.29)	7592.97	7008.00	-131.13	518.44	3194157.30	1410315.90	40°27'27.439"N	104°48'08.179"W

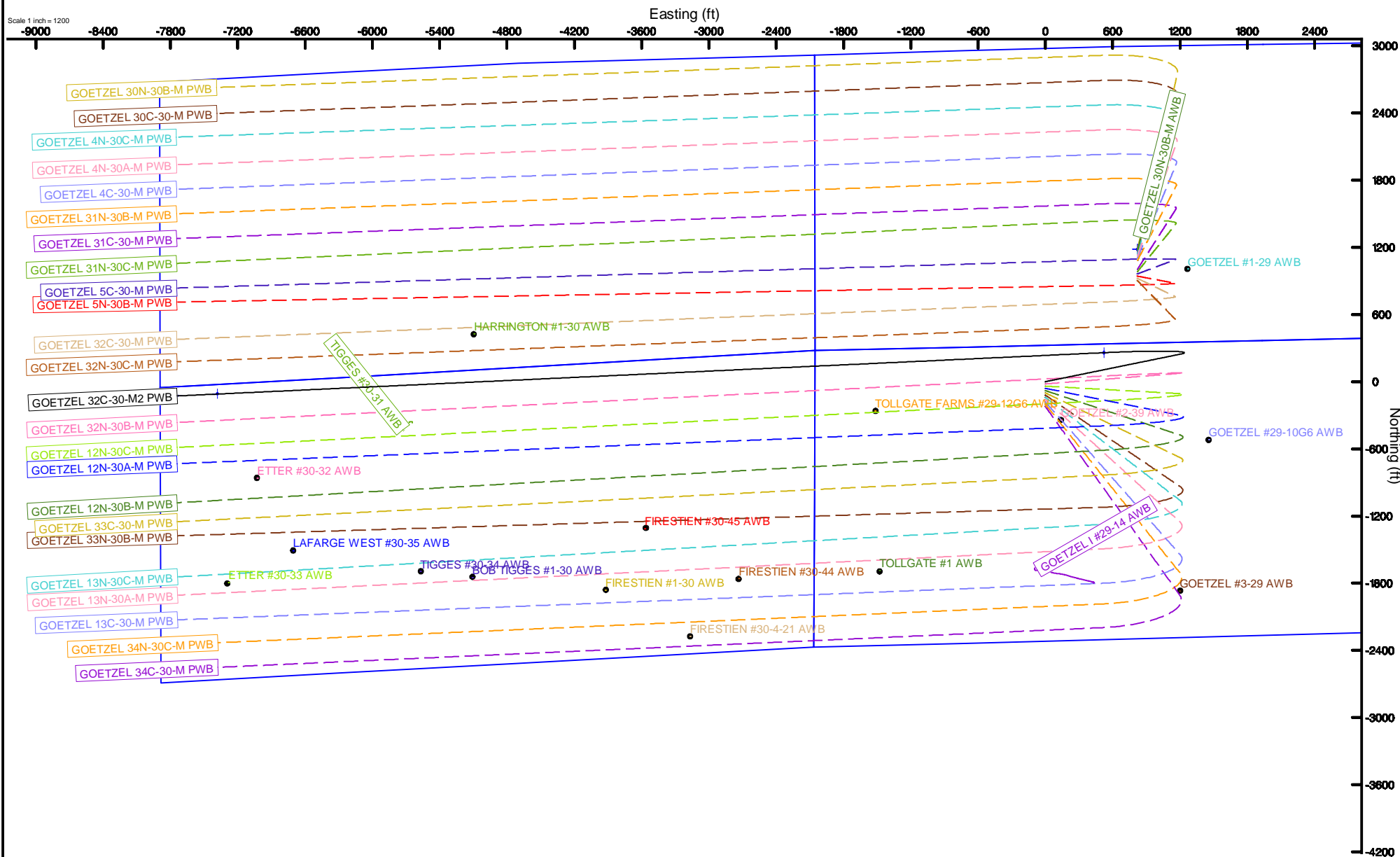
SYNERGY RESOURCES CORPORATION

Location: COLORADO Slot: SLOT#13 GOETZEL 32C-30-M2 (2317FSL & 2053FWL SEC.29)
Field: WELD COUNTY (NAD83, TRUE NORTH) Well: GOETZEL 32C-30-M2
Facility: SEC.29-T06N-R66W Wellbore: GOETZEL 32C-30-M2 PWB



BGGM (1900.0 to 2018.0) Dip: 66.92° Field: 52499.6 nT
Magnetic North is 8.43 degrees East of True North (at 2/22/2017)

To correct azimuth from Magnetic to True add 8.43 degrees



GOETZEL_12N-30C-M_REV-A.0_PWP.1as

~VERSION INFORMATION

VERS. 2.0 : CWLS LOG ASCII STANDARD-VERSION 2.0

WRAP. NO : ASCII DATA SECTION CONTAINS ONE ROW PER WELLPATH STATION

~WELL INFORMATION

#MNEM	.UNITS	DATA	:DESCRIPTION
#----	.-----	----	:-----
STRT	.ft	0.00	:START MD
STOP	.ft	15862.22	:STOP MD
STEP	.ft	0.0	:STEP (non-uniform increment)
NULL	.	-999.99	:NULL
COMP	.	SYNERGY RESOURCES CORPORATION	:OPERATOR
WELL	.	GOETZEL 12N-30C-M	:WELL
FLD	.	WELD COUNTY (NAD83,TRUE NORTH)	:FIELD
LOC	.	COLORADO	:AREA (aka: Location)
CNTY	.	N/A	:COUNTY
STAT	.	N/A	:STATE
CTRY	.	N/A	:COUNTRY
SRVC	.	Baker Hughes	:CONTRACTOR
DATE	.	02/22/2017	:LOG REV DATE
API	.		:API NUMBER

~OTHER INFORMATION

#Software: WellArchitect(R) Version 5.0

#MNEM	.UNITS	DATA	:DESCRIPTION
#----	.-----	----	:-----
WPTYPE	.	PLANNED WELLPATH	:WELLPATH TYPE
FACILITY	.	SEC.29-T06N-R66W	:FACILITY
SLOT	.	SLOT#15 GOETZEL 12N-30C-M (2277'FSL & 2053'FWL, SEC.29):SLOT	:SLOT
WELLBORE	.	GOETZEL 12N-30C-M PWB	:WELLBORE
WELLPATH	.	GOETZEL 12N-30C-M REV-A.0 PWP	:WELLPATH
MDREFPT	.	PRECISION 562 (25') (RKB)	:MD REFERENCE POINT
TVDREFPT	.	PRECISION 562 (25') (RKB)	:TVD REFERENCE POINT
LCLREFPT	.	slot	:LOCAL COORDINATE REFERENCE PT
VSAZIMUTH.deg		265.96	:VERTICAL SECTION AZIMUTH
VSORIGN .ft		0.00	:VERTICAL SECTION ORIGIN NORTH
VSORIGE .ft		0.00	:VERTICAL SECTION ORIGIN EAST

~CURVE (WELLPATH) INFORMATION

#MNEM	.UNITS	:DESCRIPTION
#----	.-----	:-----
DEPT	.ft	:MEASURED DEPTH
INC	.deg	:INCLINATION
AZI	.deg	:AZIMUTH

GOETZEL_12N-30C-M_REV-A.0_PWP.1as

TVD .ft :TRUE VERTICAL DEPTH
 SECT .ft :CROSS SECTION (CURTAIN/VERTICAL)
 LOCALN .ft :LOCAL NORTH
 LOCALE .ft :LOCAL EAST
 LAT .deg :LATITUDE
 LONG .deg :LONGITUDE
 DLS .deg/100ft :DOGLEG SEVERITY

~ASCII DATA

0.00	0.00	93.19	0.00	0.00	0.00	0.00	40.4579819	-104.8041350	0.00
25.00	0.00	93.19	25.00	0.00	0.00	0.00	40.4579819	-104.8041350	0.00
125.00	0.00	93.19	125.00	0.00	0.00	0.00	40.4579819	-104.8041350	0.00
225.00	0.00	93.19	225.00	0.00	0.00	0.00	40.4579819	-104.8041350	0.00
325.00	0.00	93.19	325.00	0.00	0.00	0.00	40.4579819	-104.8041350	0.00
425.00	0.00	93.19	425.00	0.00	0.00	0.00	40.4579819	-104.8041350	0.00
525.00	0.00	93.19	525.00	0.00	0.00	0.00	40.4579819	-104.8041350	0.00
625.00	0.00	93.19	625.00	0.00	0.00	0.00	40.4579819	-104.8041350	0.00
725.00	0.00	93.19	725.00	0.00	0.00	0.00	40.4579819	-104.8041350	0.00
825.00	0.00	93.19	825.00	0.00	0.00	0.00	40.4579819	-104.8041350	0.00
925.00	0.00	93.19	925.00	0.00	0.00	0.00	40.4579819	-104.8041350	0.00
1025.00	0.00	93.19	1025.00	0.00	0.00	0.00	40.4579819	-104.8041350	0.00
1125.00	0.00	93.19	1125.00	0.00	0.00	0.00	40.4579819	-104.8041350	0.00
1225.00	0.00	93.19	1225.00	0.00	0.00	0.00	40.4579819	-104.8041350	0.00
1325.00	0.00	93.19	1325.00	0.00	0.00	0.00	40.4579819	-104.8041350	0.00
1425.00	0.00	93.19	1425.00	0.00	0.00	0.00	40.4579819	-104.8041350	0.00
1525.00	0.00	93.19	1525.00	0.00	0.00	0.00	40.4579819	-104.8041350	0.00
1625.00	0.00	93.19	1625.00	0.00	0.00	0.00	40.4579819	-104.8041350	0.00
1700.00	0.00	93.19	1700.00	0.00	0.00	0.00	40.4579819	-104.8041350	0.00
1725.00	0.50	93.19	1725.00	-0.11	-0.01	0.11	40.4579819	-104.8041346	2.00
1825.00	2.50	93.19	1824.96	-2.70	-0.15	2.72	40.4579815	-104.8041252	2.00
1925.00	4.50	93.19	1924.77	-8.76	-0.49	8.82	40.4579806	-104.8041033	2.00
2025.00	6.50	93.19	2024.30	-18.27	-1.03	18.39	40.4579791	-104.8040689	2.00
2125.00	8.50	93.19	2123.44	-31.22	-1.75	31.42	40.4579771	-104.8040221	2.00
2225.00	10.50	93.19	2222.07	-47.59	-2.67	47.90	40.4579746	-104.8039629	2.00
2325.00	12.50	93.19	2320.05	-67.37	-3.78	67.80	40.4579716	-104.8038914	2.00
2425.00	14.50	93.19	2417.29	-90.52	-5.08	91.11	40.4579680	-104.8038076	2.00
2525.00	16.50	93.19	2513.64	-117.03	-6.57	117.79	40.4579639	-104.8037117	2.00
2545.39	16.91	93.19	2533.18	-122.85	-6.89	123.64	40.4579630	-104.8036907	2.00
2625.00	16.91	93.19	2609.34	-145.82	-8.18	146.76	40.4579595	-104.8036076	0.00
2725.00	16.91	93.19	2705.02	-174.67	-9.80	175.80	40.4579550	-104.8035033	0.00
2825.00	16.91	93.19	2800.70	-203.52	-11.42	204.84	40.4579506	-104.8033989	0.00
2925.00	16.91	93.19	2896.37	-232.37	-13.04	233.87	40.4579462	-104.8032946	0.00
3025.00	16.91	93.19	2992.05	-261.22	-14.66	262.91	40.4579417	-104.8031902	0.00
3125.00	16.91	93.19	3087.73	-290.08	-16.28	291.95	40.4579373	-104.8030859	0.00

GOETZEL_12N-30C-M_REV-A.0_PWP.1as

3225.00	16.91	93.19	3183.41	-318.93	-17.90	320.99	40.4579328	-104.8029815	0.00
3325.00	16.91	93.19	3279.08	-347.78	-19.52	350.03	40.4579284	-104.8028772	0.00
3425.00	16.91	93.19	3374.76	-376.63	-21.13	379.07	40.4579239	-104.8027728	0.00
3525.00	16.91	93.19	3470.44	-405.48	-22.75	408.10	40.4579195	-104.8026685	0.00
3625.00	16.91	93.19	3566.12	-434.34	-24.37	437.14	40.4579150	-104.8025641	0.00
3725.00	16.91	93.19	3661.79	-463.19	-25.99	466.18	40.4579106	-104.8024598	0.00
3825.00	16.91	93.19	3757.47	-492.04	-27.61	495.22	40.4579061	-104.8023555	0.00
3925.00	16.91	93.19	3853.15	-520.89	-29.23	524.26	40.4579017	-104.8022511	0.00
4025.00	16.91	93.19	3948.83	-549.74	-30.85	553.29	40.4578973	-104.8021468	0.00
4125.00	16.91	93.19	4044.50	-578.60	-32.47	582.33	40.4578928	-104.8020424	0.00
4225.00	16.91	93.19	4140.18	-607.45	-34.09	611.37	40.4578884	-104.8019381	0.00
4325.00	16.91	93.19	4235.86	-636.30	-35.70	640.41	40.4578839	-104.8018337	0.00
4425.00	16.91	93.19	4331.53	-665.15	-37.32	669.45	40.4578795	-104.8017294	0.00
4525.00	16.91	93.19	4427.21	-694.00	-38.94	698.49	40.4578750	-104.8016250	0.00
4625.00	16.91	93.19	4522.89	-722.85	-40.56	727.52	40.4578706	-104.8015207	0.00
4725.00	16.91	93.19	4618.57	-751.71	-42.18	756.56	40.4578661	-104.8014163	0.00
4825.00	16.91	93.19	4714.24	-780.56	-43.80	785.60	40.4578617	-104.8013120	0.00
4925.00	16.91	93.19	4809.92	-809.41	-45.42	814.64	40.4578572	-104.8012076	0.00
5025.00	16.91	93.19	4905.60	-838.26	-47.04	843.68	40.4578528	-104.8011033	0.00
5125.00	16.91	93.19	5001.28	-867.11	-48.66	872.72	40.4578483	-104.8009989	0.00
5225.00	16.91	93.19	5096.95	-895.97	-50.28	901.75	40.4578439	-104.8008946	0.00
5325.00	16.91	93.19	5192.63	-924.82	-51.89	930.79	40.4578395	-104.8007902	0.00
5425.00	16.91	93.19	5288.31	-953.67	-53.51	959.83	40.4578350	-104.8006859	0.00
5525.00	16.91	93.19	5383.99	-982.52	-55.13	988.87	40.4578306	-104.8005815	0.00
5625.00	16.91	93.19	5479.66	-1011.37	-56.75	1017.91	40.4578261	-104.8004772	0.00
5725.00	16.91	93.19	5575.34	-1040.23	-58.37	1046.95	40.4578217	-104.8003728	0.00
5825.00	16.91	93.19	5671.02	-1069.08	-59.99	1075.98	40.4578172	-104.8002685	0.00
5925.00	16.91	93.19	5766.70	-1097.93	-61.61	1105.02	40.4578128	-104.8001641	0.00
6025.00	16.91	93.19	5862.37	-1126.78	-63.23	1134.06	40.4578083	-104.8000598	0.00
6125.00	16.91	93.19	5958.05	-1155.63	-64.85	1163.10	40.4578039	-104.7999555	0.00
6225.00	16.91	93.19	6053.73	-1184.49	-66.47	1192.14	40.4577994	-104.7998511	0.00
6257.85	16.91	93.19	6085.16	-1193.96	-67.00	1201.68	40.4577980	-104.7998168	0.00
6325.00	11.58	96.15	6150.22	-1210.30	-68.26	1218.14	40.4577945	-104.7997577	8.00
6425.00	3.90	115.27	6249.25	-1223.16	-70.79	1231.22	40.4577875	-104.7997107	8.00
6525.00	4.92	245.17	6349.11	-1222.12	-74.05	1230.40	40.4577786	-104.7997136	8.00
6625.00	12.69	258.91	6447.86	-1207.18	-77.97	1215.70	40.4577678	-104.7997664	8.00
6725.00	20.64	262.22	6543.59	-1178.64	-82.48	1187.41	40.4577555	-104.7998681	8.00
6825.00	28.62	263.74	6634.42	-1137.06	-87.49	1146.08	40.4577417	-104.8000166	8.00
6925.00	36.60	264.64	6718.59	-1083.24	-92.90	1092.51	40.4577269	-104.8002091	8.00
7025.00	44.59	265.25	6794.46	-1018.23	-98.60	1027.74	40.4577112	-104.8004419	8.00
7125.00	52.59	265.71	6860.55	-943.29	-104.49	953.03	40.4576951	-104.8007103	8.00
7225.00	60.58	266.08	6915.58	-859.89	-110.45	869.85	40.4576787	-104.8010093	8.00
7325.00	68.57	266.39	6958.47	-769.65	-116.37	779.80	40.4576625	-104.8013328	8.00
7425.00	76.57	266.68	6988.40	-674.33	-122.13	684.64	40.4576467	-104.8016748	8.00

GOETZEL_12N-30C-M_REV-A.0_PWP.1as									
7525.00	84.57	266.94	7004.78	-575.77	-127.61	586.23	40.4576317	-104.8020284	8.00
7592.97	90.00	267.12	7008.00	-507.91	-131.13	518.44	40.4576220	-104.8022720	8.00
7625.00	90.00	267.12	7008.00	-475.89	-132.74	486.46	40.4576176	-104.8023869	0.00
7725.00	90.00	267.12	7008.00	-375.91	-137.77	386.59	40.4576038	-104.8027458	0.00
7825.00	90.00	267.12	7008.00	-275.93	-142.80	286.71	40.4575900	-104.8031047	0.00
7925.00	90.00	267.12	7008.00	-175.95	-147.83	186.84	40.4575762	-104.8034636	0.00
8025.00	90.00	267.12	7008.00	-75.97	-152.86	86.97	40.4575624	-104.8038225	0.00
8125.00	90.00	267.12	7008.00	24.01	-157.89	-12.91	40.4575486	-104.8041814	0.00
8225.00	90.00	267.12	7008.00	123.99	-162.92	-112.78	40.4575348	-104.8045403	0.00
8325.00	90.00	267.12	7008.00	223.97	-167.95	-212.66	40.4575209	-104.8048992	0.00
8425.00	90.00	267.12	7008.00	323.95	-172.98	-312.53	40.4575071	-104.8052581	0.00
8525.00	90.00	267.12	7008.00	423.93	-178.01	-412.40	40.4574933	-104.8056169	0.00
8625.00	90.00	267.12	7008.00	523.91	-183.04	-512.28	40.4574795	-104.8059758	0.00
8725.00	90.00	267.12	7008.00	623.88	-188.07	-612.15	40.4574657	-104.8063347	0.00
8825.00	90.00	267.12	7008.00	723.86	-193.10	-712.02	40.4574519	-104.8066936	0.00
8925.00	90.00	267.12	7008.00	823.84	-198.13	-811.90	40.4574381	-104.8070525	0.00
9025.00	90.00	267.12	7008.00	923.82	-203.16	-911.77	40.4574243	-104.8074114	0.00
9125.00	90.00	267.12	7008.00	1023.80	-208.19	-1011.64	40.4574104	-104.8077703	0.00
9225.00	90.00	267.12	7008.00	1123.78	-213.22	-1111.52	40.4573966	-104.8081292	0.00
9325.00	90.00	267.12	7008.00	1223.76	-218.25	-1211.39	40.4573828	-104.8084880	0.00
9425.00	90.00	267.12	7008.00	1323.74	-223.28	-1311.26	40.4573690	-104.8088469	0.00
9525.00	90.00	267.12	7008.00	1423.72	-228.31	-1411.14	40.4573552	-104.8092058	0.00
9625.00	90.00	267.12	7008.00	1523.70	-233.34	-1511.01	40.4573413	-104.8095647	0.00
9725.00	90.00	267.12	7008.00	1623.68	-238.37	-1610.88	40.4573275	-104.8099236	0.00
9825.00	90.00	267.12	7008.00	1723.66	-243.40	-1710.76	40.4573137	-104.8102825	0.00
9925.00	90.00	267.12	7008.00	1823.64	-248.43	-1810.63	40.4572999	-104.8106414	0.00
10025.00	90.00	267.12	7008.00	1923.62	-253.46	-1910.50	40.4572860	-104.8110003	0.00
10125.00	90.00	267.12	7008.00	2023.60	-258.49	-2010.38	40.4572722	-104.8113591	0.00
10225.00	90.00	267.12	7008.00	2123.58	-263.52	-2110.25	40.4572584	-104.8117180	0.00
10325.00	90.00	267.12	7008.00	2223.56	-268.55	-2210.12	40.4572445	-104.8120769	0.00
10425.00	90.00	267.12	7008.00	2323.54	-273.58	-2310.00	40.4572307	-104.8124358	0.00
10525.00	90.00	267.12	7008.00	2423.52	-278.61	-2409.87	40.4572169	-104.8127947	0.00
10625.00	90.00	267.12	7008.00	2523.50	-283.64	-2509.74	40.4572031	-104.8131536	0.00
10725.00	90.00	267.12	7008.00	2623.47	-288.67	-2609.62	40.4571892	-104.8135125	0.00
10825.00	90.00	267.12	7008.00	2723.45	-293.69	-2709.49	40.4571754	-104.8138713	0.00
10925.00	90.00	267.12	7008.00	2823.43	-298.72	-2809.36	40.4571615	-104.8142302	0.00
11025.00	90.00	267.12	7008.00	2923.41	-303.75	-2909.24	40.4571477	-104.8145891	0.00
11125.00	90.00	267.12	7008.00	3023.39	-308.78	-3009.11	40.4571339	-104.8149480	0.00
11225.00	90.00	267.12	7008.00	3123.37	-313.81	-3108.98	40.4571200	-104.8153069	0.00
11325.00	90.00	267.12	7008.00	3223.35	-318.84	-3208.86	40.4571062	-104.8156658	0.00
11425.00	90.00	267.12	7008.00	3323.33	-323.87	-3308.73	40.4570923	-104.8160247	0.00
11525.00	90.00	267.12	7008.00	3423.31	-328.90	-3408.60	40.4570785	-104.8163835	0.00
11625.00	90.00	267.12	7008.00	3523.29	-333.93	-3508.48	40.4570647	-104.8167424	0.00
11725.00	90.00	267.12	7008.00	3623.27	-338.96	-3608.35	40.4570508	-104.8171013	0.00

GOETZEL_12N-30C-M_REV-A.0_PWP.1as									
11825.00	90.00	267.12	7008.00	3723.25	-343.99	-3708.22	40.4570370	-104.8174602	0.00
11925.00	90.00	267.12	7008.00	3823.23	-349.02	-3808.10	40.4570231	-104.8178191	0.00
12025.00	90.00	267.12	7008.00	3923.21	-354.05	-3907.97	40.4570093	-104.8181780	0.00
12125.00	90.00	267.12	7008.00	4023.19	-359.08	-4007.85	40.4569954	-104.8185368	0.00
12225.00	90.00	267.12	7008.00	4123.17	-364.11	-4107.72	40.4569816	-104.8188957	0.00
12325.00	90.00	267.12	7008.00	4223.15	-369.14	-4207.59	40.4569677	-104.8192546	0.00
12425.00	90.00	267.12	7008.00	4323.13	-374.17	-4307.47	40.4569539	-104.8196135	0.00
12525.00	90.00	267.12	7008.00	4423.11	-379.20	-4407.34	40.4569400	-104.8199724	0.00
12625.00	90.00	267.12	7008.00	4523.09	-384.23	-4507.21	40.4569261	-104.8203313	0.00
12725.00	90.00	267.12	7008.00	4623.07	-389.26	-4607.09	40.4569123	-104.8206901	0.00
12825.00	90.00	267.12	7008.00	4723.04	-394.29	-4706.96	40.4568984	-104.8210490	0.00
12925.00	90.00	267.12	7008.00	4823.02	-399.32	-4806.83	40.4568846	-104.8214079	0.00
13025.00	90.00	267.12	7008.00	4923.00	-404.35	-4906.71	40.4568707	-104.8217668	0.00
13125.00	90.00	267.12	7008.00	5022.98	-409.38	-5006.58	40.4568568	-104.8221257	0.00
13225.00	90.00	267.12	7008.00	5122.96	-414.41	-5106.45	40.4568430	-104.8224846	0.00
13325.00	90.00	267.12	7008.00	5222.94	-419.44	-5206.33	40.4568291	-104.8228434	0.00
13425.00	90.00	267.12	7008.00	5322.92	-424.47	-5306.20	40.4568153	-104.8232023	0.00
13525.00	90.00	267.12	7008.00	5422.90	-429.50	-5406.07	40.4568014	-104.8235612	0.00
13625.00	90.00	267.12	7008.00	5522.88	-434.53	-5505.95	40.4567875	-104.8239201	0.00
13725.00	90.00	267.12	7008.00	5622.86	-439.56	-5605.82	40.4567737	-104.8242790	0.00
13825.00	90.00	267.12	7008.00	5722.84	-444.59	-5705.69	40.4567598	-104.8246378	0.00
13925.00	90.00	267.12	7008.00	5822.82	-449.62	-5805.57	40.4567459	-104.8249967	0.00
14025.00	90.00	267.12	7008.00	5922.80	-454.65	-5905.44	40.4567320	-104.8253556	0.00
14125.00	90.00	267.12	7008.00	6022.78	-459.68	-6005.31	40.4567182	-104.8257145	0.00
14225.00	90.00	267.12	7008.00	6122.76	-464.71	-6105.19	40.4567043	-104.8260734	0.00
14325.00	90.00	267.12	7008.00	6222.74	-469.74	-6205.06	40.4566904	-104.8264322	0.00
14425.00	90.00	267.12	7008.00	6322.72	-474.77	-6304.93	40.4566765	-104.8267911	0.00
14525.00	90.00	267.12	7008.00	6422.70	-479.80	-6404.81	40.4566627	-104.8271500	0.00
14625.00	90.00	267.12	7008.00	6522.68	-484.83	-6504.68	40.4566488	-104.8275089	0.00
14725.00	90.00	267.12	7008.00	6622.66	-489.86	-6604.55	40.4566349	-104.8278678	0.00
14825.00	90.00	267.12	7008.00	6722.64	-494.89	-6704.43	40.4566210	-104.8282266	0.00
14925.00	90.00	267.12	7008.00	6822.61	-499.92	-6804.30	40.4566072	-104.8285855	0.00
15025.00	90.00	267.12	7008.00	6922.59	-504.95	-6904.17	40.4565933	-104.8289444	0.00
15125.00	90.00	267.12	7008.00	7022.57	-509.98	-7004.05	40.4565794	-104.8293033	0.00
15225.00	90.00	267.12	7008.00	7122.55	-515.01	-7103.92	40.4565655	-104.8296622	0.00
15325.00	90.00	267.12	7008.00	7222.53	-520.04	-7203.79	40.4565516	-104.8300210	0.00
15425.00	90.00	267.12	7008.00	7322.51	-525.07	-7303.67	40.4565377	-104.8303799	0.00
15525.00	90.00	267.12	7008.00	7422.49	-530.10	-7403.54	40.4565238	-104.8307388	0.00
15625.00	90.00	267.12	7008.00	7522.47	-535.13	-7503.41	40.4565100	-104.8310977	0.00
15725.00	90.00	267.12	7008.00	7622.45	-540.16	-7603.29	40.4564961	-104.8314566	0.00
15825.00	90.00	267.12	7008.00	7722.43	-545.19	-7703.16	40.4564822	-104.8318154	0.00
15862.22	90.00	267.12	7008.00	7759.64	-547.06	-7740.33	40.4564770	-104.8319490	0.00



Planned Wellpath Report

GOETZEL 12N-30C-M REV-A.0 PWP

Page 1 of 8



REFERENCE WELLPATH IDENTIFICATION

Operator	SYNERGY RESOURCES CORPORATION	Slot	SLOT#15 GOETZEL 12N-30C-M (2277'FSL & 2053'FWL, SEC.29)
Area	COLORADO	Well	GOETZEL 12N-30C-M
Field	WELD COUNTY (NAD83,TRUE NORTH)	Wellbore	GOETZEL 12N-30C-M PWB
Facility	SEC.29-T06N-R66W		

REPORT SETUP INFORMATION

Projection System	NAD83 / Lambert Colorado SP, Northern Zone (501), US feet	Software System	WellArchitect® 5.0
North Reference	True	User	Wagnjam
Scale	0.999963	Report Generated	2/27/2017 at 5:11:50 PM
Convergence at slot	0.45° East	Database/Source file	WA_DEN_Denver_Defn/GOETZEL_12N-30C-M_REV-A.0_PWP.xml

WELLPATH LOCATION

	Local coordinates		Grid coordinates		Geographic coordinates	
	North[ft]	East[ft]	Easting[US ft]	Northing[US ft]	Latitude	Longitude
Slot Location	-1222.67	-821.48	3193637.86	1410442.95	40°27'28.735"N	104°48'14.886"W
Facility Reference Pt			3194449.65	1411672.01	40°27'40.817"N	104°48'04.259"W
Field Reference Pt			3171284.48	1426358.81	40°30'07.643"N	104°53'02.634"W

WELLPATH DATUM

Calculation method	Minimum curvature	PRECISION 562 (25') (RKB) to Facility Vertical Datum	4757.00ft
Horizontal Reference Pt	Slot	PRECISION 562 (25') (RKB) to Mean Sea Level	4757.00ft
Vertical Reference Pt	PRECISION 562 (25') (RKB)	PRECISION 562 (25') (RKB) to Mud Line at Slot (SLOT#15 GOETZEL 12N-30C-M (2277'FSL & 2053'FWL, SEC.29))	4757.00ft
MD Reference Pt	PRECISION 562 (25') (RKB)	Section Origin	N 0.00, E 0.00 ft
Field Vertical Reference	Mean Sea Level	Section Azimuth	265.96°



Planned Wellpath Report

GOETZEL 12N-30C-M REV-A.0 PWP

Page 2 of 8



REFERENCE WELLPATH IDENTIFICATION

Operator	SYNERGY RESOURCES CORPORATION	Slot	SLOT#15 GOETZEL 12N-30C-M (2277'FSL & 2053'FWL, SEC.29)
Area	COLORADO	Well	GOETZEL 12N-30C-M
Field	WELD COUNTY (NAD83,TRUE NORTH)	Wellbore	GOETZEL 12N-30C-M PWB
Facility	SEC.29-T06N-R66W		

WELLPATH DATA (165 stations) † = interpolated/extrapolated station

MD [ft]	Inclination [°]	Azimuth [°]	TVD [ft]	Vert Sect [ft]	North [ft]	East [ft]	DLS [°/100ft]	Comments
0.00†	0.000	93.191	0.00	0.00	0.00	0.00	0.00	
25.00	0.000	93.191	25.00	0.00	0.00	0.00	0.00	Tie On
125.00†	0.000	93.191	125.00	0.00	0.00	0.00	0.00	
225.00†	0.000	93.191	225.00	0.00	0.00	0.00	0.00	
325.00†	0.000	93.191	325.00	0.00	0.00	0.00	0.00	
425.00†	0.000	93.191	425.00	0.00	0.00	0.00	0.00	
525.00†	0.000	93.191	525.00	0.00	0.00	0.00	0.00	
625.00†	0.000	93.191	625.00	0.00	0.00	0.00	0.00	
725.00†	0.000	93.191	725.00	0.00	0.00	0.00	0.00	
825.00†	0.000	93.191	825.00	0.00	0.00	0.00	0.00	
925.00†	0.000	93.191	925.00	0.00	0.00	0.00	0.00	
1025.00†	0.000	93.191	1025.00	0.00	0.00	0.00	0.00	
1125.00†	0.000	93.191	1125.00	0.00	0.00	0.00	0.00	
1225.00†	0.000	93.191	1225.00	0.00	0.00	0.00	0.00	
1325.00†	0.000	93.191	1325.00	0.00	0.00	0.00	0.00	
1425.00†	0.000	93.191	1425.00	0.00	0.00	0.00	0.00	
1525.00†	0.000	93.191	1525.00	0.00	0.00	0.00	0.00	
1625.00†	0.000	93.191	1625.00	0.00	0.00	0.00	0.00	
1700.00	0.000	93.191	1700.00	0.00	0.00	0.00	0.00	End of Tangent
1725.00†	0.500	93.191	1725.00	-0.11	-0.01	0.11	2.00	
1825.00†	2.500	93.191	1824.96	-2.70	-0.15	2.72	2.00	
1925.00†	4.500	93.191	1924.77	-8.76	-0.49	8.82	2.00	
2025.00†	6.500	93.191	2024.30	-18.27	-1.03	18.39	2.00	
2125.00†	8.500	93.191	2123.44	-31.22	-1.75	31.42	2.00	
2225.00†	10.500	93.191	2222.07	-47.59	-2.67	47.90	2.00	
2325.00†	12.500	93.191	2320.05	-67.37	-3.78	67.80	2.00	
2425.00†	14.500	93.191	2417.29	-90.52	-5.08	91.11	2.00	
2525.00†	16.500	93.191	2513.64	-117.03	-6.57	117.79	2.00	
2545.39	16.908	93.191	2533.18	-122.85	-6.89	123.64	2.00	End of Build
2625.00†	16.908	93.191	2609.34	-145.82	-8.18	146.76	0.00	



Planned Wellpath Report

GOETZEL 12N-30C-M REV-A.0 PWP

Page 3 of 8



REFERENCE WELLPATH IDENTIFICATION

Operator	SYNERGY RESOURCES CORPORATION	Slot	SLOT#15 GOETZEL 12N-30C-M (2277'FSL & 2053'FWL, SEC.29)
Area	COLORADO	Well	GOETZEL 12N-30C-M
Field	WELD COUNTY (NAD83,TRUE NORTH)	Wellbore	GOETZEL 12N-30C-M PWB
Facility	SEC.29-T06N-R66W		

WELLPATH DATA (165 stations) † = interpolated/extrapolated station

MD [ft]	Inclination [°]	Azimuth [°]	TVD [ft]	Vert Sect [ft]	North [ft]	East [ft]	DLS [°/100ft]	Comments
2725.00†	16.908	93.191	2705.02	-174.67	-9.80	175.80	0.00	
2825.00†	16.908	93.191	2800.70	-203.52	-11.42	204.84	0.00	
2925.00†	16.908	93.191	2896.37	-232.37	-13.04	233.87	0.00	
3025.00†	16.908	93.191	2992.05	-261.22	-14.66	262.91	0.00	
3125.00†	16.908	93.191	3087.73	-290.08	-16.28	291.95	0.00	
3225.00†	16.908	93.191	3183.41	-318.93	-17.90	320.99	0.00	
3325.00†	16.908	93.191	3279.08	-347.78	-19.52	350.03	0.00	
3425.00†	16.908	93.191	3374.76	-376.63	-21.13	379.07	0.00	
3525.00†	16.908	93.191	3470.44	-405.48	-22.75	408.10	0.00	
3625.00†	16.908	93.191	3566.12	-434.34	-24.37	437.14	0.00	
3725.00†	16.908	93.191	3661.79	-463.19	-25.99	466.18	0.00	
3825.00†	16.908	93.191	3757.47	-492.04	-27.61	495.22	0.00	
3925.00†	16.908	93.191	3853.15	-520.89	-29.23	524.26	0.00	
4025.00†	16.908	93.191	3948.83	-549.74	-30.85	553.29	0.00	
4125.00†	16.908	93.191	4044.50	-578.60	-32.47	582.33	0.00	
4225.00†	16.908	93.191	4140.18	-607.45	-34.09	611.37	0.00	
4325.00†	16.908	93.191	4235.86	-636.30	-35.70	640.41	0.00	
4425.00†	16.908	93.191	4331.53	-665.15	-37.32	669.45	0.00	
4525.00†	16.908	93.191	4427.21	-694.00	-38.94	698.49	0.00	
4625.00†	16.908	93.191	4522.89	-722.85	-40.56	727.52	0.00	
4725.00†	16.908	93.191	4618.57	-751.71	-42.18	756.56	0.00	
4825.00†	16.908	93.191	4714.24	-780.56	-43.80	785.60	0.00	
4925.00†	16.908	93.191	4809.92	-809.41	-45.42	814.64	0.00	
5025.00†	16.908	93.191	4905.60	-838.26	-47.04	843.68	0.00	
5125.00†	16.908	93.191	5001.28	-867.11	-48.66	872.72	0.00	
5225.00†	16.908	93.191	5096.95	-895.97	-50.28	901.75	0.00	
5325.00†	16.908	93.191	5192.63	-924.82	-51.89	930.79	0.00	
5425.00†	16.908	93.191	5288.31	-953.67	-53.51	959.83	0.00	
5525.00†	16.908	93.191	5383.99	-982.52	-55.13	988.87	0.00	
5625.00†	16.908	93.191	5479.66	-1011.37	-56.75	1017.91	0.00	



Planned Wellpath Report

GOETZEL 12N-30C-M REV-A.0 PWP

Page 4 of 8



REFERENCE WELLPATH IDENTIFICATION

Operator	SYNERGY RESOURCES CORPORATION	Slot	SLOT#15 GOETZEL 12N-30C-M (2277'FSL & 2053'FWL, SEC.29)
Area	COLORADO	Well	GOETZEL 12N-30C-M
Field	WELD COUNTY (NAD83,TRUE NORTH)	Wellbore	GOETZEL 12N-30C-M PWB
Facility	SEC.29-T06N-R66W		

WELLPATH DATA (165 stations) † = interpolated/extrapolated station

MD [ft]	Inclination [°]	Azimuth [°]	TVD [ft]	Vert Sect [ft]	North [ft]	East [ft]	DLS [°/100ft]	Comments
5725.00†	16.908	93.191	5575.34	-1040.23	-58.37	1046.95	0.00	
5825.00†	16.908	93.191	5671.02	-1069.08	-59.99	1075.98	0.00	
5925.00†	16.908	93.191	5766.70	-1097.93	-61.61	1105.02	0.00	
6025.00†	16.908	93.191	5862.37	-1126.78	-63.23	1134.06	0.00	
6125.00†	16.908	93.191	5958.05	-1155.63	-64.85	1163.10	0.00	
6225.00†	16.908	93.191	6053.73	-1184.49	-66.47	1192.14	0.00	
6257.85	16.908	93.191	6085.16	-1193.96	-67.00	1201.68	0.00	End of Tangent
6325.00†	11.583	96.146	6150.22	-1210.30	-68.26	1218.14	8.00	
6425.00†	3.900	115.270	6249.25	-1223.16	-70.79	1231.22	8.00	
6525.00†	4.919	245.172	6349.11	-1222.12	-74.05	1230.40	8.00	
6625.00†	12.694	258.907	6447.86	-1207.18	-77.97	1215.70	8.00	
6725.00†	20.641	262.218	6543.59	-1178.64	-82.48	1187.41	8.00	
6825.00†	28.616	263.737	6634.42	-1137.06	-87.49	1146.08	8.00	
6925.00†	36.602	264.635	6718.59	-1083.24	-92.90	1092.51	8.00	
7025.00†	44.592	265.247	6794.46	-1018.23	-98.60	1027.74	8.00	
7125.00†	52.585	265.707	6860.55	-943.29	-104.49	953.03	8.00	
7225.00†	60.579	266.077	6915.58	-859.89	-110.45	869.85	8.00	
7325.00†	68.574	266.394	6958.47	-769.65	-116.37	779.80	8.00	
7425.00†	76.569	266.677	6988.40	-674.33	-122.13	684.64	8.00	
7525.00†	84.565	266.942	7004.78	-575.77	-127.61	586.23	8.00	
7592.97	90.000	267.117	7008.00 ¹	-507.91	-131.13	518.44	8.00	End of 3D Arc
7625.00†	90.000	267.117	7008.00	-475.89	-132.74	486.46	0.00	
7725.00†	90.000	267.117	7008.00	-375.91	-137.77	386.59	0.00	
7825.00†	90.000	267.117	7008.00	-275.93	-142.80	286.71	0.00	
7925.00†	90.000	267.117	7008.00	-175.95	-147.83	186.84	0.00	
8025.00†	90.000	267.117	7008.00	-75.97	-152.86	86.97	0.00	
8125.00†	90.000	267.117	7008.00	24.01	-157.89	-12.91	0.00	
8225.00†	90.000	267.117	7008.00	123.99	-162.92	-112.78	0.00	
8325.00†	90.000	267.117	7008.00	223.97	-167.95	-212.66	0.00	
8425.00†	90.000	267.117	7008.00	323.95	-172.98	-312.53	0.00	



Planned Wellpath Report

GOETZEL 12N-30C-M REV-A.0 PWP

Page 5 of 8



REFERENCE WELLPATH IDENTIFICATION

Operator	SYNERGY RESOURCES CORPORATION	Slot	SLOT#15 GOETZEL 12N-30C-M (2277'FSL & 2053'FWL, SEC.29)
Area	COLORADO	Well	GOETZEL 12N-30C-M
Field	WELD COUNTY (NAD83,TRUE NORTH)	Wellbore	GOETZEL 12N-30C-M PWB
Facility	SEC.29-T06N-R66W		

WELLPATH DATA (165 stations) † = interpolated/extrapolated station

MD [ft]	Inclination [°]	Azimuth [°]	TVD [ft]	Vert Sect [ft]	North [ft]	East [ft]	DLS [°/100ft]	Comments
8525.00†	90.000	267.117	7008.00	423.93	-178.01	-412.40	0.00	
8625.00†	90.000	267.117	7008.00	523.91	-183.04	-512.28	0.00	
8725.00†	90.000	267.117	7008.00	623.88	-188.07	-612.15	0.00	
8825.00†	90.000	267.117	7008.00	723.86	-193.10	-712.02	0.00	
8925.00†	90.000	267.117	7008.00	823.84	-198.13	-811.90	0.00	
9025.00†	90.000	267.117	7008.00	923.82	-203.16	-911.77	0.00	
9125.00†	90.000	267.117	7008.00	1023.80	-208.19	-1011.64	0.00	
9225.00†	90.000	267.117	7008.00	1123.78	-213.22	-1111.52	0.00	
9325.00†	90.000	267.117	7008.00	1223.76	-218.25	-1211.39	0.00	
9425.00†	90.000	267.117	7008.00	1323.74	-223.28	-1311.26	0.00	
9525.00†	90.000	267.117	7008.00	1423.72	-228.31	-1411.14	0.00	
9625.00†	90.000	267.117	7008.00	1523.70	-233.34	-1511.01	0.00	
9725.00†	90.000	267.117	7008.00	1623.68	-238.37	-1610.88	0.00	
9825.00†	90.000	267.117	7008.00	1723.66	-243.40	-1710.76	0.00	
9925.00†	90.000	267.117	7008.00	1823.64	-248.43	-1810.63	0.00	
10025.00†	90.000	267.117	7008.00	1923.62	-253.46	-1910.50	0.00	
10125.00†	90.000	267.117	7008.00	2023.60	-258.49	-2010.38	0.00	
10225.00†	90.000	267.117	7008.00	2123.58	-263.52	-2110.25	0.00	
10325.00†	90.000	267.117	7008.00	2223.56	-268.55	-2210.12	0.00	
10425.00†	90.000	267.117	7008.00	2323.54	-273.58	-2310.00	0.00	
10525.00†	90.000	267.117	7008.00	2423.52	-278.61	-2409.87	0.00	
10625.00†	90.000	267.117	7008.00	2523.50	-283.64	-2509.74	0.00	
10725.00†	90.000	267.117	7008.00	2623.47	-288.67	-2609.62	0.00	
10825.00†	90.000	267.117	7008.00	2723.45	-293.69	-2709.49	0.00	
10925.00†	90.000	267.117	7008.00	2823.43	-298.72	-2809.36	0.00	
11025.00†	90.000	267.117	7008.00	2923.41	-303.75	-2909.24	0.00	
11125.00†	90.000	267.117	7008.00	3023.39	-308.78	-3009.11	0.00	
11225.00†	90.000	267.117	7008.00	3123.37	-313.81	-3108.98	0.00	
11325.00†	90.000	267.117	7008.00	3223.35	-318.84	-3208.86	0.00	
11425.00†	90.000	267.117	7008.00	3323.33	-323.87	-3308.73	0.00	



Planned Wellpath Report

GOETZEL 12N-30C-M REV-A.0 PWP

Page 6 of 8



REFERENCE WELLPATH IDENTIFICATION

Operator	SYNERGY RESOURCES CORPORATION	Slot	SLOT#15 GOETZEL 12N-30C-M (2277'FSL & 2053'FWL, SEC.29)
Area	COLORADO	Well	GOETZEL 12N-30C-M
Field	WELD COUNTY (NAD83,TRUE NORTH)	Wellbore	GOETZEL 12N-30C-M PWB
Facility	SEC.29-T06N-R66W		

WELLPATH DATA (165 stations) † = interpolated/extrapolated station

MD [ft]	Inclination [°]	Azimuth [°]	TVD [ft]	Vert Sect [ft]	North [ft]	East [ft]	DLS [°/100ft]	Comments
11525.00†	90.000	267.117	7008.00	3423.31	-328.90	-3408.60	0.00	
11625.00†	90.000	267.117	7008.00	3523.29	-333.93	-3508.48	0.00	
11725.00†	90.000	267.117	7008.00	3623.27	-338.96	-3608.35	0.00	
11825.00†	90.000	267.117	7008.00	3723.25	-343.99	-3708.22	0.00	
11925.00†	90.000	267.117	7008.00	3823.23	-349.02	-3808.10	0.00	
12025.00†	90.000	267.117	7008.00	3923.21	-354.05	-3907.97	0.00	
12125.00†	90.000	267.117	7008.00	4023.19	-359.08	-4007.85	0.00	
12225.00†	90.000	267.117	7008.00	4123.17	-364.11	-4107.72	0.00	
12325.00†	90.000	267.117	7008.00	4223.15	-369.14	-4207.59	0.00	
12425.00†	90.000	267.117	7008.00	4323.13	-374.17	-4307.47	0.00	
12525.00†	90.000	267.117	7008.00	4423.11	-379.20	-4407.34	0.00	
12625.00†	90.000	267.117	7008.00	4523.09	-384.23	-4507.21	0.00	
12725.00†	90.000	267.117	7008.00	4623.07	-389.26	-4607.09	0.00	
12825.00†	90.000	267.117	7008.00	4723.04	-394.29	-4706.96	0.00	
12925.00†	90.000	267.117	7008.00	4823.02	-399.32	-4806.83	0.00	
13025.00†	90.000	267.117	7008.00	4923.00	-404.35	-4906.71	0.00	
13125.00†	90.000	267.117	7008.00	5022.98	-409.38	-5006.58	0.00	
13225.00†	90.000	267.117	7008.00	5122.96	-414.41	-5106.45	0.00	
13325.00†	90.000	267.117	7008.00	5222.94	-419.44	-5206.33	0.00	
13425.00†	90.000	267.117	7008.00	5322.92	-424.47	-5306.20	0.00	
13525.00†	90.000	267.117	7008.00	5422.90	-429.50	-5406.07	0.00	
13625.00†	90.000	267.117	7008.00	5522.88	-434.53	-5505.95	0.00	
13725.00†	90.000	267.117	7008.00	5622.86	-439.56	-5605.82	0.00	
13825.00†	90.000	267.117	7008.00	5722.84	-444.59	-5705.69	0.00	
13925.00†	90.000	267.117	7008.00	5822.82	-449.62	-5805.57	0.00	
14025.00†	90.000	267.117	7008.00	5922.80	-454.65	-5905.44	0.00	
14125.00†	90.000	267.117	7008.00	6022.78	-459.68	-6005.31	0.00	
14225.00†	90.000	267.117	7008.00	6122.76	-464.71	-6105.19	0.00	
14325.00†	90.000	267.117	7008.00	6222.74	-469.74	-6205.06	0.00	
14425.00†	90.000	267.117	7008.00	6322.72	-474.77	-6304.93	0.00	



Planned Wellpath Report

GOETZEL 12N-30C-M REV-A.0 PWP

Page 7 of 8



REFERENCE WELLPATH IDENTIFICATION

Operator	SYNERGY RESOURCES CORPORATION	Slot	SLOT#15 GOETZEL 12N-30C-M (2277'FSL & 2053'FWL, SEC.29)
Area	COLORADO	Well	GOETZEL 12N-30C-M
Field	WELD COUNTY (NAD83,TRUE NORTH)	Wellbore	GOETZEL 12N-30C-M PWB
Facility	SEC.29-T06N-R66W		

WELLPATH DATA (165 stations) † = interpolated/extrapolated station

MD [ft]	Inclination [°]	Azimuth [°]	TVD [ft]	Vert Sect [ft]	North [ft]	East [ft]	DLS [°/100ft]	Comments
14525.00†	90.000	267.117	7008.00	6422.70	-479.80	-6404.81	0.00	
14625.00†	90.000	267.117	7008.00	6522.68	-484.83	-6504.68	0.00	
14725.00†	90.000	267.117	7008.00	6622.66	-489.86	-6604.55	0.00	
14825.00†	90.000	267.117	7008.00	6722.64	-494.89	-6704.43	0.00	
14925.00†	90.000	267.117	7008.00	6822.61	-499.92	-6804.30	0.00	
15025.00†	90.000	267.117	7008.00	6922.59	-504.95	-6904.17	0.00	
15125.00†	90.000	267.117	7008.00	7022.57	-509.98	-7004.05	0.00	
15225.00†	90.000	267.117	7008.00	7122.55	-515.01	-7103.92	0.00	
15325.00†	90.000	267.117	7008.00	7222.53	-520.04	-7203.79	0.00	
15425.00†	90.000	267.117	7008.00	7322.51	-525.07	-7303.67	0.00	
15525.00†	90.000	267.117	7008.00	7422.49	-530.10	-7403.54	0.00	
15625.00†	90.000	267.117	7008.00	7522.47	-535.13	-7503.41	0.00	
15725.00†	90.000	267.117	7008.00	7622.45	-540.16	-7603.29	0.00	
15825.00†	90.000	267.117	7008.00	7722.43	-545.19	-7703.16	0.00	
15862.22	90.000	267.117	7008.00 ²	7759.64	-547.06	-7740.33	0.00	End of Tangent

HOLE & CASING SECTIONS - Ref Wellbore: GOETZEL 12N-30C-M PWB Ref Wellpath: GOETZEL 12N-30C-M REV-A.0 PWP

String/Diameter	Start MD [ft]	End MD [ft]	Interval [ft]	Start TVD [ft]	End TVD [ft]	Start N/S [ft]	Start E/W [ft]	End N/S [ft]	End E/W [ft]
13.5in Open Hole	25.00	1700.00	1675.00	25.00	1700.00	0.00	0.00	0.00	0.00
8.5in Open Hole	1700.00	15862.00	14162.00	1700.00	7008.00	0.00	0.00	-547.05	-7740.11



Planned Wellpath Report

GOETZEL 12N-30C-M REV-A.0 PWP

Page 8 of 8



REFERENCE WELLPATH IDENTIFICATION

Operator	SYNERGY RESOURCES CORPORATION	Slot	SLOT#15 GOETZEL 12N-30C-M (2277'FSL & 2053'FWL, SEC.29)
Area	COLORADO	Well	GOETZEL 12N-30C-M
Field	WELD COUNTY (NAD83,TRUE NORTH)	Wellbore	GOETZEL 12N-30C-M PWB
Facility	SEC.29-T06N-R66W		

TARGETS

Name	MD [ft]	TVD [ft]	North [ft]	East [ft]	Grid East [US ft]	Grid North [US ft]	Latitude	Longitude	Shape
SEC.29-T06N-R66W NORTHERN		9.00	1222.68	821.45	3194449.66	1411671.99	40°27'40.817"N	104°48'04.259"W	polygon
SEC.29-T06N-R66W SOUTHERN		9.00	1222.68	821.45	3194449.66	1411671.99	40°27'40.817"N	104°48'04.259"W	polygon
SEC.30-T06N-R66W NORTHERN		9.00	1222.68	821.45	3194449.66	1411671.99	40°27'40.817"N	104°48'04.259"W	polygon
SEC.30-T06N-R66W SOUTHERN		9.00	1222.68	821.45	3194449.66	1411671.99	40°27'40.817"N	104°48'04.259"W	polygon
GOETZEL 12N-30C-M BHL ON PLAT (2092'FSL & 510'FWL SEC.30)		7008.00	-527.13	-7380.22	3186262.29	1409857.94	40°27'23.515"N	104°49'50.358"W	circle
2) GOETZEL 12N-30C-M BHL REV-1 (2092'FSL & 150'FWL SEC.30)	15862.22	7008.00	-547.06	-7740.33	3185902.36	1409835.19	40°27'23.317"N	104°49'55.016"W	point
1) GOETZEL 12N-30C-M TOP OF PROD REV-1 (2132'FSL & 2573'FWL SEC.29)	7592.97	7008.00	-131.13	518.44	3194157.30	1410315.90	40°27'27.439"N	104°48'08.179"W	circle

SURVEY PROGRAM - Ref Wellbore: GOETZEL 12N-30C-M PWB Ref Wellpath: GOETZEL 12N-30C-M REV-A.0 PWP

Start MD [ft]	End MD [ft]	Positional Uncertainty Model	Log Name/Comment	Wellbore
25.00	1700.00	Custom BHI NaviTrak (Standard Rotating+Axial Corr) (Rockies 0.03Gt model)		GOETZEL 12N-30C-M PWB
1700.00	15862.22	Custom BHI AutoTrak Curve (IFR1, Short) (Rockies 0.03Gt model)		GOETZEL 12N-30C-M PWB