

SYNERGY RESOURCES CORPORATION

Location: COLORADO Slot: SLOT#13 GOETZEL 32C-30-M2 (2317'FSL & 2053'FWL SEC.29)
Field: WELD COUNTY (NAD83, TRUE NORTH) Well: GOETZEL 32C-30-M2
Facility: SEC.29-T06N-R66W Wellbore: GOETZEL 32C-30-M2 PWB

Plot reference wellpath is GOETZEL 32C-30-M2 REV-A.0 PWP

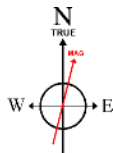
True vertical depths are referenced to PRECISION 562 (25) (RKB)	Grid System: NAD83 / Lambert Colorado SP, Northern Zone (501), US feet
Measured depths are referenced to PRECISION 562 (25) (RKB)	* = Wellpath was transformed from a different geodetic datum
PRECISION 562 (25) (RKB) to Mean Sea Level: 4757 feet	North Reference: True north
Mean Sea Level to Mud line (At Slot: SLOT#13 GOETZEL 32C-30-M2 (2317'FSL & 2053'FWL SEC.29): 0 feet	Scale: True distance
Coordinates are in feet referenced to Slot	Depths are in feet
	Created by: wajugram on 2017-02-27
	Database: WA_DEN_Denver_Defn

Location Information

Facility Name	Grid East (US ft)	Grid North (US ft)	Latitude	Longitude
SEC.29-T06N-R66W	3194449.646	1411672.008	40°27'40.817"N	104°48'04.259"W
Slot	Local N (ft)	Local E (ft)	Grid East (US ft)	Grid North (US ft)
SLOT#13 GOETZEL 32C-30-M2 (2317'FSL & 2053'FWL SEC.29)	-1182.60	821.16	3193637.858	1410483.023
PRECISION 562 (25) (RKB) to Mud line (At Slot: SLOT#13 GOETZEL 32C-30-M2 (2317'FSL & 2053'FWL SEC.29)				4757ft
Mean Sea Level to Mud line (At Slot: SLOT#13 GOETZEL 32C-30-M2 (2317'FSL & 2053'FWL SEC.29)				0ft
PRECISION 562 (25) (RKB) to Mean Sea Level				4757ft

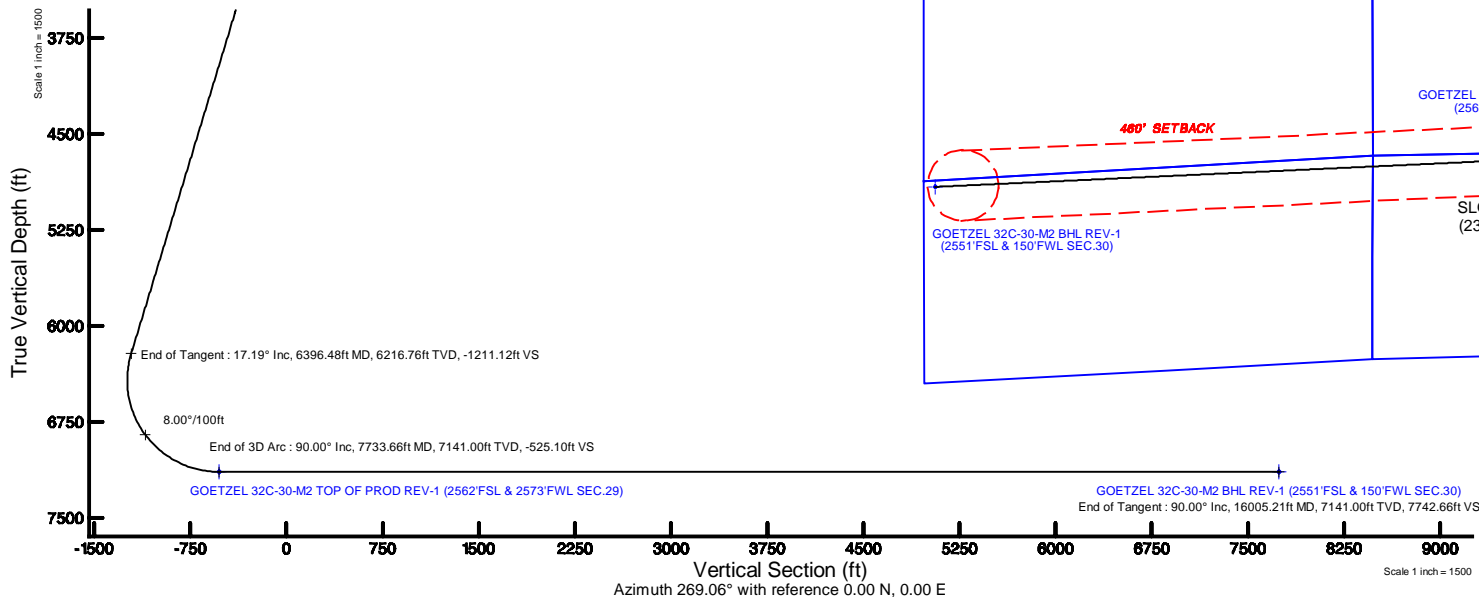
Tie-On Position

MD (ft)	Inc (°)	Az (°)	TVD (ft)	Local N (ft)	Local E (ft)	Grid East (US ft)	Grid North (US ft)	Latitude	Longitude
25.00	0.000	78.439	25.00	0.00	0.00	3193637.86	1410483.02	40°27'29.131"N	104°48'14.882"W



BGGM (1900.0 to 2018.0) Dip: 66.92° Field: 52499.6 nT
Magnetic North is 8.43 degrees East of True North (at 2/22/2017)

To correct azimuth from Magnetic to True add 8.43 degrees



Well Profile Data

Design Comment	MD (ft)	Inc (°)	Az (°)	TVD (ft)	Local N (ft)	Local E (ft)	DLS (°/100ft)	VS (ft)
Tie On	25.00	0.000	78.439	25.00	0.00	0.00	0.00	0.00
End of Tangent	1800.00	0.000	78.439	1800.00	0.00	0.00	0.00	0.00
End of Build	2659.35	17.187	78.439	2646.52	25.64	125.33	2.00	-125.74
End of Tangent	6396.48	17.187	78.439	6216.76	246.96	1207.22	0.00	-1211.12
End of 3D Arc	7733.66	90.000	267.322	7141.00	259.05	520.91	8.00	-525.10
End of Tangent	16005.21	90.000	267.322	7141.00	-127.37	-7741.61	0.00	7742.66

Survey Program

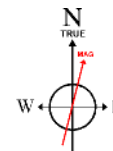
Start MD (ft)	End MD (ft)	Tool	Model	Log Name/Comment	Wellbore
25.00	1700.00	BH NewTrak	Custom BH NewTrak (Standard Rotating-Axial Core) (Rockies 0.03G model)		GOETZEL 32C-30-M2 PWB
1700.00	16005.21	BH AutoTrak Curve	Custom BH AutoTrak Curve (IFR1, Short) (Rockies 0.03G model)		GOETZEL 32C-30-M2 PWB

Targets

Name	MD (ft)	TVD (ft)	Local N (ft)	Local E (ft)	Grid East (US ft)	Grid North (US ft)	Latitude	Longitude
SEC.29-T06N-REVIEW-NORTHERN	9.00	1182.60	821.14	3194449.66	1411671.99	40°27'40.817"N	104°48'04.259"W	
SEC.29-T06N-REVIEW-SOUTHERN	9.00	1182.60	821.14	3194449.66	1411671.99	40°27'40.817"N	104°48'04.259"W	
SEC.30-T06N-REVIEW-NORTHERN	9.00	1182.60	821.14	3194449.66	1411671.99	40°27'40.817"N	104°48'04.259"W	
SEC.30-T06N-REVIEW-SOUTHERN	9.00	1182.60	821.14	3194449.66	1411671.99	40°27'40.817"N	104°48'04.259"W	
GOETZEL 32C-30-M2 BHL ON PLAT (2551'FSL & 150'FWL SEC.30)	7141.00	-107.81	-7381.78	3186257.43	1410317.30	40°27'31.891"N	104°48'08.143"W	
GOETZEL 32C-30-M2 BHL REV-1 (2551'FSL & 150'FWL SEC.30)	16005.21	7141.00	-127.37	-7741.61	3185897.78	1410294.91	40°27'31.891"N	104°48'08.143"W
GOETZEL 32C-30-M2 TOP OF PROD REV-1 (2562'FSL & 2573'FWL SEC.29)	7733.66	7141.00	259.05	520.91	3194156.70	1410746.15	40°27'31.891"N	104°48'08.143"W

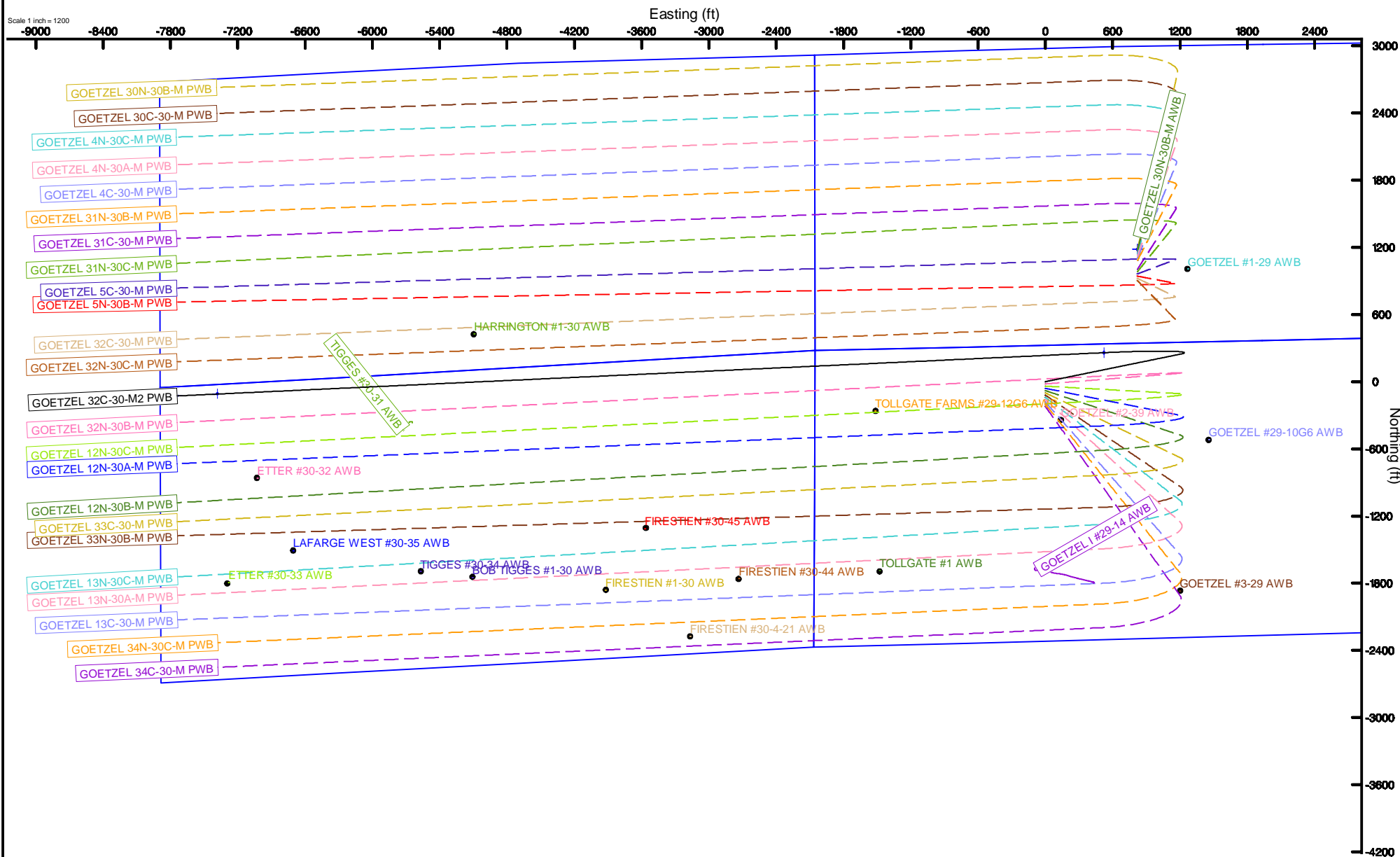
SYNERGY RESOURCES CORPORATION

Location: COLORADO Slot: SLOT#13 GOETZEL 32C-30-M2 (2317FSL & 2053FWL SEC.29)
Field: WELD COUNTY (NAD83, TRUE NORTH) Well: GOETZEL 32C-30-M2
Facility: SEC.29-T06N-R66W Wellbore: GOETZEL 32C-30-M2 PWB



BGGM (1900.0 to 2018.0) Dip: 66.92° Field: 52499.6 nT
Magnetic North is 8.43 degrees East of True North (at 2/22/2017)

To correct azimuth from Magnetic to True add 8.43 degrees



GOETZEL_32C-30-M2_REV-A.0_PWP.1as

~VERSION INFORMATION

VERS. 2.0 : CWLS LOG ASCII STANDARD-VERSION 2.0
 WRAP. NO : ASCII DATA SECTION CONTAINS ONE ROW PER WELLPATH STATION

~WELL INFORMATION

#MNEM	.UNITS	DATA	:DESCRIPTION
#----	.-----	----	:-----
STRT	.ft	0.00	:START MD
STOP	.ft	16005.21	:STOP MD
STEP	.ft	0.0	:STEP (non-uniform increment)
NULL	.	-999.99	:NULL
COMP	.	SYNERGY RESOURCES CORPORATION	:OPERATOR
WELL	.	GOETZEL 32C-30-M2	:WELL
FLD	.	WELD COUNTY (NAD83,TRUE NORTH)	:FIELD
LOC	.	COLORADO	:AREA (aka: Location)
CNTY	.	N/A	:COUNTY
STAT	.	N/A	:STATE
CTRY	.	N/A	:COUNTRY
SRVC	.	Baker Hughes	:CONTRACTOR
DATE	.	02/22/2017	:LOG REV DATE
API	.		:API NUMBER

~OTHER INFORMATION

#Software: wellArchitect(R) Version 5.0

#MNEM	.UNITS	DATA	:DESCRIPTION
#----	.-----	----	:-----
WPTYPE	.	PLANNED WELLPATH	:WELLPATH TYPE
FACILITY	.	SEC.29-T06N-R66W	:FACILITY
SLOT	.	SLOT#13 GOETZEL 32C-30-M2 (2317'FSL & 2053'FWL SEC.29:SLOT	
WELLBORE	.	GOETZEL 32C-30-M2 PWB	:WELLBORE
WELLPATH	.	GOETZEL 32C-30-M2 REV-A.0 PWP	:WELLPATH
MDREFPT	.	PRECISION 562 (25') (RKB)	:MD REFERENCE POINT
TVDREFPT	.	PRECISION 562 (25') (RKB)	:TVD REFERENCE POINT
LCLREFPT	.	slot	:LOCAL COORDINATE REFERENCE PT
VSAZIMUTH.deg		269.06	:VERTICAL SECTION AZIMUTH
VSORIGN .ft		0.00	:VERTICAL SECTION ORIGIN NORTH
VSORIGE .ft		0.00	:VERTICAL SECTION ORIGIN EAST

~CURVE (WELLPATH) INFORMATION

#MNEM	.UNITS	:DESCRIPTION
#----	.-----	:-----
DEPT	.ft	:MEASURED DEPTH
INC	.deg	:INCLINATION
AZI	.deg	:AZIMUTH

GOETZEL_32C-30-M2_REV-A.0_PWP.1as

TVD .ft :TRUE VERTICAL DEPTH
 SECT .ft :CROSS SECTION (CURTAIN/VERTICAL)
 LOCALN .ft :LOCAL NORTH
 LOCALE .ft :LOCAL EAST
 LAT .deg :LATITUDE
 LONG .deg :LONGITUDE
 DLS .deg/100ft :DOGLEG SEVERITY

~ASCII DATA

0.00	0.00	78.44	0.00	0.00	0.00	0.00	40.4580919	-104.8041339	0.00
25.00	0.00	78.44	25.00	0.00	0.00	0.00	40.4580919	-104.8041339	0.00
125.00	0.00	78.44	125.00	0.00	0.00	0.00	40.4580919	-104.8041339	0.00
225.00	0.00	78.44	225.00	0.00	0.00	0.00	40.4580919	-104.8041339	0.00
325.00	0.00	78.44	325.00	0.00	0.00	0.00	40.4580919	-104.8041339	0.00
425.00	0.00	78.44	425.00	0.00	0.00	0.00	40.4580919	-104.8041339	0.00
525.00	0.00	78.44	525.00	0.00	0.00	0.00	40.4580919	-104.8041339	0.00
625.00	0.00	78.44	625.00	0.00	0.00	0.00	40.4580919	-104.8041339	0.00
725.00	0.00	78.44	725.00	0.00	0.00	0.00	40.4580919	-104.8041339	0.00
825.00	0.00	78.44	825.00	0.00	0.00	0.00	40.4580919	-104.8041339	0.00
925.00	0.00	78.44	925.00	0.00	0.00	0.00	40.4580919	-104.8041339	0.00
1025.00	0.00	78.44	1025.00	0.00	0.00	0.00	40.4580919	-104.8041339	0.00
1125.00	0.00	78.44	1125.00	0.00	0.00	0.00	40.4580919	-104.8041339	0.00
1225.00	0.00	78.44	1225.00	0.00	0.00	0.00	40.4580919	-104.8041339	0.00
1325.00	0.00	78.44	1325.00	0.00	0.00	0.00	40.4580919	-104.8041339	0.00
1425.00	0.00	78.44	1425.00	0.00	0.00	0.00	40.4580919	-104.8041339	0.00
1525.00	0.00	78.44	1525.00	0.00	0.00	0.00	40.4580919	-104.8041339	0.00
1625.00	0.00	78.44	1625.00	0.00	0.00	0.00	40.4580919	-104.8041339	0.00
1725.00	0.00	78.44	1725.00	0.00	0.00	0.00	40.4580919	-104.8041339	0.00
1800.00	0.00	78.44	1800.00	0.00	0.00	0.00	40.4580919	-104.8041339	0.00
1825.00	0.50	78.44	1825.00	-0.11	0.02	0.11	40.4580920	-104.8041335	2.00
1925.00	2.50	78.44	1924.96	-2.68	0.55	2.67	40.4580934	-104.8041243	2.00
2025.00	4.50	78.44	2024.77	-8.68	1.77	8.65	40.4580968	-104.8041028	2.00
2125.00	6.50	78.44	2124.30	-18.10	3.69	18.04	40.4581021	-104.8040691	2.00
2225.00	8.50	78.44	2223.44	-30.93	6.31	30.83	40.4581093	-104.8040231	2.00
2325.00	10.50	78.44	2322.07	-47.15	9.61	47.00	40.4581183	-104.8039650	2.00
2425.00	12.50	78.44	2420.05	-66.74	13.61	66.53	40.4581293	-104.8038948	2.00
2525.00	14.50	78.44	2517.29	-89.69	18.29	89.40	40.4581421	-104.8038126	2.00
2625.00	16.50	78.44	2613.64	-115.95	23.64	115.58	40.4581568	-104.8037186	2.00
2659.35	17.19	78.44	2646.52	-125.74	25.64	125.33	40.4581623	-104.8036835	2.00
2725.00	17.19	78.44	2709.24	-144.80	29.53	144.34	40.4581730	-104.8036152	0.00
2825.00	17.19	78.44	2804.77	-173.85	35.45	173.29	40.4581892	-104.8035112	0.00
2925.00	17.19	78.44	2900.31	-202.89	41.37	202.24	40.4582055	-104.8034072	0.00
3025.00	17.19	78.44	2995.84	-231.93	47.29	231.19	40.4582218	-104.8033031	0.00
3125.00	17.19	78.44	3091.38	-260.98	53.21	260.13	40.4582380	-104.8031991	0.00

GOETZEL_32C-30-M2_REV-A.0_PWP.1as

3225.00	17.19	78.44	3186.91	-290.02	59.14	289.08	40.4582543	-104.8030951	0.00
3325.00	17.19	78.44	3282.45	-319.06	65.06	318.03	40.4582705	-104.8029910	0.00
3425.00	17.19	78.44	3377.98	-348.10	70.98	346.98	40.4582868	-104.8028870	0.00
3525.00	17.19	78.44	3473.51	-377.15	76.90	375.93	40.4583030	-104.8027830	0.00
3625.00	17.19	78.44	3569.05	-406.19	82.83	404.88	40.4583193	-104.8026789	0.00
3725.00	17.19	78.44	3664.58	-435.23	88.75	433.83	40.4583355	-104.8025749	0.00
3825.00	17.19	78.44	3760.12	-464.28	94.67	462.78	40.4583518	-104.8024709	0.00
3925.00	17.19	78.44	3855.65	-493.32	100.59	491.73	40.4583680	-104.8023669	0.00
4025.00	17.19	78.44	3951.19	-522.36	106.51	520.68	40.4583843	-104.8022628	0.00
4125.00	17.19	78.44	4046.72	-551.41	112.44	549.63	40.4584006	-104.8021588	0.00
4225.00	17.19	78.44	4142.26	-580.45	118.36	578.58	40.4584168	-104.8020548	0.00
4325.00	17.19	78.44	4237.79	-609.49	124.28	607.53	40.4584331	-104.8019507	0.00
4425.00	17.19	78.44	4333.33	-638.54	130.20	636.48	40.4584493	-104.8018467	0.00
4525.00	17.19	78.44	4428.86	-667.58	136.13	665.43	40.4584656	-104.8017427	0.00
4625.00	17.19	78.44	4524.39	-696.62	142.05	694.38	40.4584818	-104.8016386	0.00
4725.00	17.19	78.44	4619.93	-725.67	147.97	723.33	40.4584981	-104.8015346	0.00
4825.00	17.19	78.44	4715.46	-754.71	153.89	752.28	40.4585143	-104.8014306	0.00
4925.00	17.19	78.44	4811.00	-783.75	159.81	781.23	40.4585306	-104.8013265	0.00
5025.00	17.19	78.44	4906.53	-812.80	165.74	810.18	40.4585468	-104.8012225	0.00
5125.00	17.19	78.44	5002.07	-841.84	171.66	839.13	40.4585631	-104.8011185	0.00
5225.00	17.19	78.44	5097.60	-870.88	177.58	868.08	40.4585793	-104.8010144	0.00
5325.00	17.19	78.44	5193.14	-899.93	183.50	897.03	40.4585956	-104.8009104	0.00
5425.00	17.19	78.44	5288.67	-928.97	189.42	925.98	40.4586118	-104.8008064	0.00
5525.00	17.19	78.44	5384.20	-958.01	195.35	954.93	40.4586281	-104.8007024	0.00
5625.00	17.19	78.44	5479.74	-987.06	201.27	983.88	40.4586443	-104.8005983	0.00
5725.00	17.19	78.44	5575.27	-1016.10	207.19	1012.83	40.4586606	-104.8004943	0.00
5825.00	17.19	78.44	5670.81	-1045.14	213.11	1041.78	40.4586769	-104.8003903	0.00
5925.00	17.19	78.44	5766.34	-1074.19	219.04	1070.73	40.4586931	-104.8002862	0.00
6025.00	17.19	78.44	5861.88	-1103.23	224.96	1099.68	40.4587094	-104.8001822	0.00
6125.00	17.19	78.44	5957.41	-1132.27	230.88	1128.63	40.4587256	-104.8000782	0.00
6225.00	17.19	78.44	6052.95	-1161.32	236.80	1157.58	40.4587419	-104.7999741	0.00
6325.00	17.19	78.44	6148.48	-1190.36	242.72	1186.53	40.4587581	-104.7998701	0.00
6396.48	17.19	78.44	6216.76	-1211.12	246.96	1207.22	40.4587697	-104.7997957	0.00
6425.00	14.94	77.01	6244.17	-1218.86	248.63	1214.93	40.4587743	-104.7997680	8.00
6525.00	7.23	65.20	6342.25	-1237.25	254.17	1233.23	40.4587895	-104.7997023	8.00
6625.00	3.03	331.76	6441.94	-1241.79	259.15	1237.70	40.4588032	-104.7996862	8.00
6725.00	9.70	283.55	6541.32	-1232.41	263.46	1228.24	40.4588150	-104.7997202	8.00
6825.00	17.52	276.03	6638.44	-1209.28	267.02	1205.05	40.4588248	-104.7998035	8.00
6925.00	25.45	273.08	6731.43	-1172.86	269.76	1168.58	40.4588323	-104.7999346	8.00
7025.00	33.41	271.48	6818.46	-1123.84	271.63	1119.53	40.4588375	-104.8001109	8.00
7125.00	41.38	270.43	6897.84	-1063.20	272.59	1058.86	40.4588401	-104.8003289	8.00
7225.00	49.36	269.67	6968.03	-992.10	272.62	987.75	40.4588402	-104.8005844	8.00
7325.00	57.35	269.08	7027.67	-911.93	271.72	907.58	40.4588377	-104.8008725	8.00
7425.00	65.34	268.58	7075.59	-824.25	269.91	819.92	40.4588328	-104.8011875	8.00

GOETZEL_32C-30-M2_REV-A.0_PWP.1as

7525.00	73.33	268.14	7110.85	-730.77	267.23	726.47	40.4588254	-104.8015233	8.00
7625.00	81.32	267.74	7132.78	-633.30	263.72	629.05	40.4588158	-104.8018734	8.00
7725.00	89.31	267.36	7140.95	-533.75	259.46	529.56	40.4588041	-104.8022309	8.00
7733.66	90.00	267.32	7141.00	-525.10	259.05	520.91	40.4588030	-104.8022620	8.00
7825.00	90.00	267.32	7141.00	-433.80	254.79	429.67	40.4587913	-104.8025899	0.00
7925.00	90.00	267.32	7141.00	-333.85	250.12	329.78	40.4587785	-104.8029488	0.00
8025.00	90.00	267.32	7141.00	-233.89	245.44	229.88	40.4587657	-104.8033078	0.00
8125.00	90.00	267.32	7141.00	-133.94	240.77	129.99	40.4587528	-104.8036668	0.00
8225.00	90.00	267.32	7141.00	-33.98	236.10	30.10	40.4587400	-104.8040257	0.00
8325.00	90.00	267.32	7141.00	65.97	231.43	-69.79	40.4587272	-104.8043847	0.00
8425.00	90.00	267.32	7141.00	165.93	226.76	-169.68	40.4587144	-104.8047436	0.00
8525.00	90.00	267.32	7141.00	265.88	222.09	-269.57	40.4587015	-104.8051026	0.00
8625.00	90.00	267.32	7141.00	365.83	217.41	-369.46	40.4586887	-104.8054615	0.00
8725.00	90.00	267.32	7141.00	465.79	212.74	-469.35	40.4586759	-104.8058205	0.00
8825.00	90.00	267.32	7141.00	565.74	208.07	-569.24	40.4586631	-104.8061795	0.00
8925.00	90.00	267.32	7141.00	665.70	203.40	-669.13	40.4586502	-104.8065384	0.00
9025.00	90.00	267.32	7141.00	765.65	198.73	-769.02	40.4586374	-104.8068974	0.00
9125.00	90.00	267.32	7141.00	865.60	194.05	-868.91	40.4586246	-104.8072563	0.00
9225.00	90.00	267.32	7141.00	965.56	189.38	-968.81	40.4586117	-104.8076153	0.00
9325.00	90.00	267.32	7141.00	1065.51	184.71	-1068.70	40.4585989	-104.8079742	0.00
9425.00	90.00	267.32	7141.00	1165.47	180.04	-1168.59	40.4585861	-104.8083332	0.00
9525.00	90.00	267.32	7141.00	1265.42	175.37	-1268.48	40.4585732	-104.8086922	0.00
9625.00	90.00	267.32	7141.00	1365.38	170.70	-1368.37	40.4585604	-104.8090511	0.00
9725.00	90.00	267.32	7141.00	1465.33	166.02	-1468.26	40.4585475	-104.8094101	0.00
9825.00	90.00	267.32	7141.00	1565.28	161.35	-1568.15	40.4585347	-104.8097690	0.00
9925.00	90.00	267.32	7141.00	1665.24	156.68	-1668.04	40.4585219	-104.8101280	0.00
10025.00	90.00	267.32	7141.00	1765.19	152.01	-1767.93	40.4585090	-104.8104869	0.00
10125.00	90.00	267.32	7141.00	1865.15	147.34	-1867.82	40.4584962	-104.8108459	0.00
10225.00	90.00	267.32	7141.00	1965.10	142.67	-1967.71	40.4584833	-104.8112049	0.00
10325.00	90.00	267.32	7141.00	2065.05	137.99	-2067.60	40.4584705	-104.8115638	0.00
10425.00	90.00	267.32	7141.00	2165.01	133.32	-2167.50	40.4584576	-104.8119228	0.00
10525.00	90.00	267.32	7141.00	2264.96	128.65	-2267.39	40.4584448	-104.8122817	0.00
10625.00	90.00	267.32	7141.00	2364.92	123.98	-2367.28	40.4584319	-104.8126407	0.00
10725.00	90.00	267.32	7141.00	2464.87	119.31	-2467.17	40.4584191	-104.8129996	0.00
10825.00	90.00	267.32	7141.00	2564.83	114.64	-2567.06	40.4584062	-104.8133586	0.00
10925.00	90.00	267.32	7141.00	2664.78	109.96	-2666.95	40.4583934	-104.8137175	0.00
11025.00	90.00	267.32	7141.00	2764.73	105.29	-2766.84	40.4583805	-104.8140765	0.00
11125.00	90.00	267.32	7141.00	2864.69	100.62	-2866.73	40.4583677	-104.8144354	0.00
11225.00	90.00	267.32	7141.00	2964.64	95.95	-2966.62	40.4583548	-104.8147944	0.00
11325.00	90.00	267.32	7141.00	3064.60	91.28	-3066.51	40.4583420	-104.8151534	0.00
11425.00	90.00	267.32	7141.00	3164.55	86.61	-3166.40	40.4583291	-104.8155123	0.00
11525.00	90.00	267.32	7141.00	3264.50	81.93	-3266.29	40.4583162	-104.8158713	0.00
11625.00	90.00	267.32	7141.00	3364.46	77.26	-3366.18	40.4583034	-104.8162302	0.00
11725.00	90.00	267.32	7141.00	3464.41	72.59	-3466.08	40.4582905	-104.8165892	0.00

GOETZEL_32C-30-M2_REV-A.0_PWP.1as									
11825.00	90.00	267.32	7141.00	3564.37	67.92	-3565.97	40.4582777	-104.8169481	0.00
11925.00	90.00	267.32	7141.00	3664.32	63.25	-3665.86	40.4582648	-104.8173071	0.00
12025.00	90.00	267.32	7141.00	3764.28	58.58	-3765.75	40.4582519	-104.8176660	0.00
12125.00	90.00	267.32	7141.00	3864.23	53.90	-3865.64	40.4582391	-104.8180250	0.00
12225.00	90.00	267.32	7141.00	3964.18	49.23	-3965.53	40.4582262	-104.8183839	0.00
12325.00	90.00	267.32	7141.00	4064.14	44.56	-4065.42	40.4582133	-104.8187429	0.00
12425.00	90.00	267.32	7141.00	4164.09	39.89	-4165.31	40.4582005	-104.8191018	0.00
12525.00	90.00	267.32	7141.00	4264.05	35.22	-4265.20	40.4581876	-104.8194608	0.00
12625.00	90.00	267.32	7141.00	4364.00	30.54	-4365.09	40.4581747	-104.8198197	0.00
12725.00	90.00	267.32	7141.00	4463.95	25.87	-4464.98	40.4581619	-104.8201787	0.00
12825.00	90.00	267.32	7141.00	4563.91	21.20	-4564.87	40.4581490	-104.8205376	0.00
12925.00	90.00	267.32	7141.00	4663.86	16.53	-4664.77	40.4581361	-104.8208966	0.00
13025.00	90.00	267.32	7141.00	4763.82	11.86	-4764.66	40.4581232	-104.8212556	0.00
13125.00	90.00	267.32	7141.00	4863.77	7.19	-4864.55	40.4581104	-104.8216145	0.00
13225.00	90.00	267.32	7141.00	4963.72	2.51	-4964.44	40.4580975	-104.8219735	0.00
13325.00	90.00	267.32	7141.00	5063.68	-2.16	-5064.33	40.4580846	-104.8223324	0.00
13425.00	90.00	267.32	7141.00	5163.63	-6.83	-5164.22	40.4580717	-104.8226914	0.00
13525.00	90.00	267.32	7141.00	5263.59	-11.50	-5264.11	40.4580588	-104.8230503	0.00
13625.00	90.00	267.32	7141.00	5363.54	-16.17	-5364.00	40.4580460	-104.8234093	0.00
13725.00	90.00	267.32	7141.00	5463.50	-20.84	-5463.89	40.4580331	-104.8237682	0.00
13825.00	90.00	267.32	7141.00	5563.45	-25.52	-5563.78	40.4580202	-104.8241272	0.00
13925.00	90.00	267.32	7141.00	5663.40	-30.19	-5663.67	40.4580073	-104.8244861	0.00
14025.00	90.00	267.32	7141.00	5763.36	-34.86	-5763.56	40.4579944	-104.8248451	0.00
14125.00	90.00	267.32	7141.00	5863.31	-39.53	-5863.46	40.4579815	-104.8252040	0.00
14225.00	90.00	267.32	7141.00	5963.27	-44.20	-5963.35	40.4579686	-104.8255630	0.00
14325.00	90.00	267.32	7141.00	6063.22	-48.87	-6063.24	40.4579557	-104.8259219	0.00
14425.00	90.00	267.32	7141.00	6163.17	-53.55	-6163.13	40.4579429	-104.8262809	0.00
14525.00	90.00	267.32	7141.00	6263.13	-58.22	-6263.02	40.4579300	-104.8266398	0.00
14625.00	90.00	267.32	7141.00	6363.08	-62.89	-6362.91	40.4579171	-104.8269988	0.00
14725.00	90.00	267.32	7141.00	6463.04	-67.56	-6462.80	40.4579042	-104.8273577	0.00
14825.00	90.00	267.32	7141.00	6562.99	-72.23	-6562.69	40.4578913	-104.8277167	0.00
14925.00	90.00	267.32	7141.00	6662.95	-76.90	-6662.58	40.4578784	-104.8280756	0.00
15025.00	90.00	267.32	7141.00	6762.90	-81.58	-6762.47	40.4578655	-104.8284346	0.00
15125.00	90.00	267.32	7141.00	6862.85	-86.25	-6862.36	40.4578526	-104.8287935	0.00
15225.00	90.00	267.32	7141.00	6962.81	-90.92	-6962.25	40.4578397	-104.8291525	0.00
15325.00	90.00	267.32	7141.00	7062.76	-95.59	-7062.15	40.4578268	-104.8295114	0.00
15425.00	90.00	267.32	7141.00	7162.72	-100.26	-7162.04	40.4578139	-104.8298704	0.00
15525.00	90.00	267.32	7141.00	7262.67	-104.93	-7261.93	40.4578010	-104.8302293	0.00
15625.00	90.00	267.32	7141.00	7362.62	-109.61	-7361.82	40.4577881	-104.8305883	0.00
15725.00	90.00	267.32	7141.00	7462.58	-114.28	-7461.71	40.4577752	-104.8309472	0.00
15825.00	90.00	267.32	7141.00	7562.53	-118.95	-7561.60	40.4577623	-104.8313061	0.00
15925.00	90.00	267.32	7141.00	7662.49	-123.62	-7661.49	40.4577494	-104.8316651	0.00
16005.21	90.00	267.32	7141.00	7742.66	-127.37	-7741.61	40.4577390	-104.8319530	0.00



Planned Wellpath Report

GOETZEL 32C-30-M2 REV-A.0 PWP

Page 1 of 8



REFERENCE WELLPATH IDENTIFICATION

Operator	SYNERGY RESOURCES CORPORATION	Slot	SLOT#13 GOETZEL 32C-30-M2 (2317'FSL & 2053'FWL SEC.29
Area	COLORADO	Well	GOETZEL 32C-30-M2
Field	WELD COUNTY (NAD83,TRUE NORTH)	Wellbore	GOETZEL 32C-30-M2 PWB
Facility	SEC.29-T06N-R66W		

REPORT SETUP INFORMATION

Projection System	NAD83 / Lambert Colorado SP, Northern Zone (501), US feet	Software System	WellArchitect® 5.0
North Reference	True	User	Wagnjam
Scale	0.999963	Report Generated	2/27/2017 at 4:48:29 PM
Convergence at slot	0.45° East	Database/Source file	WA_DEN_Denver_Defn/GOETZEL_32C-30-M2_REV-A.0_PWP.xml

WELLPATH LOCATION

	Local coordinates		Grid coordinates		Geographic coordinates	
	North[ft]	East[ft]	Easting[US ft]	Northing[US ft]	Latitude	Longitude
Slot Location	-1182.60	-821.16	3193637.86	1410483.02	40°27'29.131"N	104°48'14.882"W
Facility Reference Pt			3194449.65	1411672.01	40°27'40.817"N	104°48'04.259"W
Field Reference Pt			3171284.48	1426358.81	40°30'07.643"N	104°53'02.634"W

WELLPATH DATUM

Calculation method	Minimum curvature	PRECISION 562 (25') (RKB) to Facility Vertical Datum	4757.00ft
Horizontal Reference Pt	Slot	PRECISION 562 (25') (RKB) to Mean Sea Level	4757.00ft
Vertical Reference Pt	PRECISION 562 (25') (RKB)	PRECISION 562 (25') (RKB) to Mud Line at Slot (SLOT#13 GOETZEL 32C-30-M2 (2317'FSL & 2053'FWL SEC.29)	4757.00ft
MD Reference Pt	PRECISION 562 (25') (RKB)	Section Origin	N 0.00, E 0.00 ft
Field Vertical Reference	Mean Sea Level	Section Azimuth	269.06°



Planned Wellpath Report

GOETZEL 32C-30-M2 REV-A.0 PWP

Page 2 of 8



REFERENCE WELLPATH IDENTIFICATION

Operator	SYNERGY RESOURCES CORPORATION	Slot	SLOT#13 GOETZEL 32C-30-M2 (2317'FSL & 2053'FWL SEC.29
Area	COLORADO	Well	GOETZEL 32C-30-M2
Field	WELD COUNTY (NAD83,TRUE NORTH)	Wellbore	GOETZEL 32C-30-M2 PWB
Facility	SEC.29-T06N-R66W		

WELLPATH DATA (166 stations) † = interpolated/extrapolated station

MD [ft]	Inclination [°]	Azimuth [°]	TVD [ft]	Vert Sect [ft]	North [ft]	East [ft]	DLS [°/100ft]	Comments
0.00†	0.000	78.439	0.00	0.00	0.00	0.00	0.00	
25.00	0.000	78.439	25.00	0.00	0.00	0.00	0.00	Tie On
125.00†	0.000	78.439	125.00	0.00	0.00	0.00	0.00	
225.00†	0.000	78.439	225.00	0.00	0.00	0.00	0.00	
325.00†	0.000	78.439	325.00	0.00	0.00	0.00	0.00	
425.00†	0.000	78.439	425.00	0.00	0.00	0.00	0.00	
525.00†	0.000	78.439	525.00	0.00	0.00	0.00	0.00	
625.00†	0.000	78.439	625.00	0.00	0.00	0.00	0.00	
725.00†	0.000	78.439	725.00	0.00	0.00	0.00	0.00	
825.00†	0.000	78.439	825.00	0.00	0.00	0.00	0.00	
925.00†	0.000	78.439	925.00	0.00	0.00	0.00	0.00	
1025.00†	0.000	78.439	1025.00	0.00	0.00	0.00	0.00	
1125.00†	0.000	78.439	1125.00	0.00	0.00	0.00	0.00	
1225.00†	0.000	78.439	1225.00	0.00	0.00	0.00	0.00	
1325.00†	0.000	78.439	1325.00	0.00	0.00	0.00	0.00	
1425.00†	0.000	78.439	1425.00	0.00	0.00	0.00	0.00	
1525.00†	0.000	78.439	1525.00	0.00	0.00	0.00	0.00	
1625.00†	0.000	78.439	1625.00	0.00	0.00	0.00	0.00	
1725.00†	0.000	78.439	1725.00	0.00	0.00	0.00	0.00	
1800.00	0.000	78.439	1800.00	0.00	0.00	0.00	0.00	End of Tangent
1825.00†	0.500	78.439	1825.00	-0.11	0.02	0.11	2.00	
1925.00†	2.500	78.439	1924.96	-2.68	0.55	2.67	2.00	
2025.00†	4.500	78.439	2024.77	-8.68	1.77	8.65	2.00	
2125.00†	6.500	78.439	2124.30	-18.10	3.69	18.04	2.00	
2225.00†	8.500	78.439	2223.44	-30.93	6.31	30.83	2.00	
2325.00†	10.500	78.439	2322.07	-47.15	9.61	47.00	2.00	
2425.00†	12.500	78.439	2420.05	-66.74	13.61	66.53	2.00	
2525.00†	14.500	78.439	2517.29	-89.69	18.29	89.40	2.00	
2625.00†	16.500	78.439	2613.64	-115.95	23.64	115.58	2.00	
2659.35	17.187	78.439	2646.52	-125.74	25.64	125.33	2.00	End of Build



Planned Wellpath Report

GOETZEL 32C-30-M2 REV-A.0 PWP

Page 3 of 8



REFERENCE WELLPATH IDENTIFICATION

Operator	SYNERGY RESOURCES CORPORATION	Slot	SLOT#13 GOETZEL 32C-30-M2 (2317'FSL & 2053'FWL SEC.29
Area	COLORADO	Well	GOETZEL 32C-30-M2
Field	WELD COUNTY (NAD83,TRUE NORTH)	Wellbore	GOETZEL 32C-30-M2 PWB
Facility	SEC.29-T06N-R66W		

WELLPATH DATA (166 stations) † = interpolated/extrapolated station

MD [ft]	Inclination [°]	Azimuth [°]	TVD [ft]	Vert Sect [ft]	North [ft]	East [ft]	DLS [°/100ft]	Comments
2725.00†	17.187	78.439	2709.24	-144.80	29.53	144.34	0.00	
2825.00†	17.187	78.439	2804.77	-173.85	35.45	173.29	0.00	
2925.00†	17.187	78.439	2900.31	-202.89	41.37	202.24	0.00	
3025.00†	17.187	78.439	2995.84	-231.93	47.29	231.19	0.00	
3125.00†	17.187	78.439	3091.38	-260.98	53.21	260.13	0.00	
3225.00†	17.187	78.439	3186.91	-290.02	59.14	289.08	0.00	
3325.00†	17.187	78.439	3282.45	-319.06	65.06	318.03	0.00	
3425.00†	17.187	78.439	3377.98	-348.10	70.98	346.98	0.00	
3525.00†	17.187	78.439	3473.51	-377.15	76.90	375.93	0.00	
3625.00†	17.187	78.439	3569.05	-406.19	82.83	404.88	0.00	
3725.00†	17.187	78.439	3664.58	-435.23	88.75	433.83	0.00	
3825.00†	17.187	78.439	3760.12	-464.28	94.67	462.78	0.00	
3925.00†	17.187	78.439	3855.65	-493.32	100.59	491.73	0.00	
4025.00†	17.187	78.439	3951.19	-522.36	106.51	520.68	0.00	
4125.00†	17.187	78.439	4046.72	-551.41	112.44	549.63	0.00	
4225.00†	17.187	78.439	4142.26	-580.45	118.36	578.58	0.00	
4325.00†	17.187	78.439	4237.79	-609.49	124.28	607.53	0.00	
4425.00†	17.187	78.439	4333.33	-638.54	130.20	636.48	0.00	
4525.00†	17.187	78.439	4428.86	-667.58	136.13	665.43	0.00	
4625.00†	17.187	78.439	4524.39	-696.62	142.05	694.38	0.00	
4725.00†	17.187	78.439	4619.93	-725.67	147.97	723.33	0.00	
4825.00†	17.187	78.439	4715.46	-754.71	153.89	752.28	0.00	
4925.00†	17.187	78.439	4811.00	-783.75	159.81	781.23	0.00	
5025.00†	17.187	78.439	4906.53	-812.80	165.74	810.18	0.00	
5125.00†	17.187	78.439	5002.07	-841.84	171.66	839.13	0.00	
5225.00†	17.187	78.439	5097.60	-870.88	177.58	868.08	0.00	
5325.00†	17.187	78.439	5193.14	-899.93	183.50	897.03	0.00	
5425.00†	17.187	78.439	5288.67	-928.97	189.42	925.98	0.00	
5525.00†	17.187	78.439	5384.20	-958.01	195.35	954.93	0.00	
5625.00†	17.187	78.439	5479.74	-987.06	201.27	983.88	0.00	



Planned Wellpath Report

GOETZEL 32C-30-M2 REV-A.0 PWP

Page 4 of 8



REFERENCE WELLPATH IDENTIFICATION

Operator	SYNERGY RESOURCES CORPORATION	Slot	SLOT#13 GOETZEL 32C-30-M2 (2317'FSL & 2053'FWL SEC.29
Area	COLORADO	Well	GOETZEL 32C-30-M2
Field	WELD COUNTY (NAD83,TRUE NORTH)	Wellbore	GOETZEL 32C-30-M2 PWB
Facility	SEC.29-T06N-R66W		

WELLPATH DATA (166 stations) † = interpolated/extrapolated station

MD [ft]	Inclination [°]	Azimuth [°]	TVD [ft]	Vert Sect [ft]	North [ft]	East [ft]	DLS [°/100ft]	Comments
5725.00†	17.187	78.439	5575.27	-1016.10	207.19	1012.83	0.00	
5825.00†	17.187	78.439	5670.81	-1045.14	213.11	1041.78	0.00	
5925.00†	17.187	78.439	5766.34	-1074.19	219.04	1070.73	0.00	
6025.00†	17.187	78.439	5861.88	-1103.23	224.96	1099.68	0.00	
6125.00†	17.187	78.439	5957.41	-1132.27	230.88	1128.63	0.00	
6225.00†	17.187	78.439	6052.95	-1161.32	236.80	1157.58	0.00	
6325.00†	17.187	78.439	6148.48	-1190.36	242.72	1186.53	0.00	
6396.48	17.187	78.439	6216.76	-1211.12	246.96	1207.22	0.00	End of Tangent
6425.00†	14.939	77.010	6244.17	-1218.86	248.63	1214.93	8.00	
6525.00†	7.227	65.196	6342.25	-1237.25	254.17	1233.23	8.00	
6625.00†	3.031	331.759	6441.94	-1241.79	259.15	1237.70	8.00	
6725.00†	9.697	283.554	6541.32	-1232.41	263.46	1228.24	8.00	
6825.00†	17.516	276.027	6638.44	-1209.28	267.02	1205.05	8.00	
6925.00†	25.445	273.084	6731.43	-1172.86	269.76	1168.58	8.00	
7025.00†	33.407	271.475	6818.46	-1123.84	271.63	1119.53	8.00	
7125.00†	41.382	270.430	6897.84	-1063.20	272.59	1058.86	8.00	
7225.00†	49.363	269.672	6968.03	-992.10	272.62	987.75	8.00	
7325.00†	57.349	269.076	7027.67	-911.93	271.72	907.58	8.00	
7425.00†	65.337	268.579	7075.59	-824.25	269.91	819.92	8.00	
7525.00†	73.327	268.142	7110.85	-730.77	267.23	726.47	8.00	
7625.00†	81.317	267.740	7132.78	-633.30	263.72	629.05	8.00	
7725.00†	89.308	267.355	7140.95	-533.75	259.46	529.56	8.00	
7733.66	90.000	267.322	7141.00†	-525.10	259.05	520.91	8.00	End of 3D Arc
7825.00†	90.000	267.322	7141.00	-433.80	254.79	429.67	0.00	
7925.00†	90.000	267.322	7141.00	-333.85	250.12	329.78	0.00	
8025.00†	90.000	267.322	7141.00	-233.89	245.44	229.88	0.00	
8125.00†	90.000	267.322	7141.00	-133.94	240.77	129.99	0.00	
8225.00†	90.000	267.322	7141.00	-33.98	236.10	30.10	0.00	
8325.00†	90.000	267.322	7141.00	65.97	231.43	-69.79	0.00	
8425.00†	90.000	267.322	7141.00	165.93	226.76	-169.68	0.00	



Planned Wellpath Report

GOETZEL 32C-30-M2 REV-A.0 PWP

Page 5 of 8



REFERENCE WELLPATH IDENTIFICATION

Operator	SYNERGY RESOURCES CORPORATION	Slot	SLOT#13 GOETZEL 32C-30-M2 (2317'FSL & 2053'FWL SEC.29
Area	COLORADO	Well	GOETZEL 32C-30-M2
Field	WELD COUNTY (NAD83,TRUE NORTH)	Wellbore	GOETZEL 32C-30-M2 PWB
Facility	SEC.29-T06N-R66W		

WELLPATH DATA (166 stations) † = interpolated/extrapolated station

MD [ft]	Inclination [°]	Azimuth [°]	TVD [ft]	Vert Sect [ft]	North [ft]	East [ft]	DLS [°/100ft]	Comments
8525.00†	90.000	267.322	7141.00	265.88	222.09	-269.57	0.00	
8625.00†	90.000	267.322	7141.00	365.83	217.41	-369.46	0.00	
8725.00†	90.000	267.322	7141.00	465.79	212.74	-469.35	0.00	
8825.00†	90.000	267.322	7141.00	565.74	208.07	-569.24	0.00	
8925.00†	90.000	267.322	7141.00	665.70	203.40	-669.13	0.00	
9025.00†	90.000	267.322	7141.00	765.65	198.73	-769.02	0.00	
9125.00†	90.000	267.322	7141.00	865.60	194.05	-868.91	0.00	
9225.00†	90.000	267.322	7141.00	965.56	189.38	-968.81	0.00	
9325.00†	90.000	267.322	7141.00	1065.51	184.71	-1068.70	0.00	
9425.00†	90.000	267.322	7141.00	1165.47	180.04	-1168.59	0.00	
9525.00†	90.000	267.322	7141.00	1265.42	175.37	-1268.48	0.00	
9625.00†	90.000	267.322	7141.00	1365.38	170.70	-1368.37	0.00	
9725.00†	90.000	267.322	7141.00	1465.33	166.02	-1468.26	0.00	
9825.00†	90.000	267.322	7141.00	1565.28	161.35	-1568.15	0.00	
9925.00†	90.000	267.322	7141.00	1665.24	156.68	-1668.04	0.00	
10025.00†	90.000	267.322	7141.00	1765.19	152.01	-1767.93	0.00	
10125.00†	90.000	267.322	7141.00	1865.15	147.34	-1867.82	0.00	
10225.00†	90.000	267.322	7141.00	1965.10	142.67	-1967.71	0.00	
10325.00†	90.000	267.322	7141.00	2065.05	137.99	-2067.60	0.00	
10425.00†	90.000	267.322	7141.00	2165.01	133.32	-2167.50	0.00	
10525.00†	90.000	267.322	7141.00	2264.96	128.65	-2267.39	0.00	
10625.00†	90.000	267.322	7141.00	2364.92	123.98	-2367.28	0.00	
10725.00†	90.000	267.322	7141.00	2464.87	119.31	-2467.17	0.00	
10825.00†	90.000	267.322	7141.00	2564.83	114.64	-2567.06	0.00	
10925.00†	90.000	267.322	7141.00	2664.78	109.96	-2666.95	0.00	
11025.00†	90.000	267.322	7141.00	2764.73	105.29	-2766.84	0.00	
11125.00†	90.000	267.322	7141.00	2864.69	100.62	-2866.73	0.00	
11225.00†	90.000	267.322	7141.00	2964.64	95.95	-2966.62	0.00	
11325.00†	90.000	267.322	7141.00	3064.60	91.28	-3066.51	0.00	
11425.00†	90.000	267.322	7141.00	3164.55	86.61	-3166.40	0.00	



Planned Wellpath Report

GOETZEL 32C-30-M2 REV-A.0 PWP

Page 6 of 8



REFERENCE WELLPATH IDENTIFICATION

Operator	SYNERGY RESOURCES CORPORATION	Slot	SLOT#13 GOETZEL 32C-30-M2 (2317'FSL & 2053'FWL SEC.29
Area	COLORADO	Well	GOETZEL 32C-30-M2
Field	WELD COUNTY (NAD83,TRUE NORTH)	Wellbore	GOETZEL 32C-30-M2 PWB
Facility	SEC.29-T06N-R66W		

WELLPATH DATA (166 stations) † = interpolated/extrapolated station

MD [ft]	Inclination [°]	Azimuth [°]	TVD [ft]	Vert Sect [ft]	North [ft]	East [ft]	DLS [°/100ft]	Comments
11525.00†	90.000	267.322	7141.00	3264.50	81.93	-3266.29	0.00	
11625.00†	90.000	267.322	7141.00	3364.46	77.26	-3366.18	0.00	
11725.00†	90.000	267.322	7141.00	3464.41	72.59	-3466.08	0.00	
11825.00†	90.000	267.322	7141.00	3564.37	67.92	-3565.97	0.00	
11925.00†	90.000	267.322	7141.00	3664.32	63.25	-3665.86	0.00	
12025.00†	90.000	267.322	7141.00	3764.28	58.58	-3765.75	0.00	
12125.00†	90.000	267.322	7141.00	3864.23	53.90	-3865.64	0.00	
12225.00†	90.000	267.322	7141.00	3964.18	49.23	-3965.53	0.00	
12325.00†	90.000	267.322	7141.00	4064.14	44.56	-4065.42	0.00	
12425.00†	90.000	267.322	7141.00	4164.09	39.89	-4165.31	0.00	
12525.00†	90.000	267.322	7141.00	4264.05	35.22	-4265.20	0.00	
12625.00†	90.000	267.322	7141.00	4364.00	30.54	-4365.09	0.00	
12725.00†	90.000	267.322	7141.00	4463.95	25.87	-4464.98	0.00	
12825.00†	90.000	267.322	7141.00	4563.91	21.20	-4564.87	0.00	
12925.00†	90.000	267.322	7141.00	4663.86	16.53	-4664.77	0.00	
13025.00†	90.000	267.322	7141.00	4763.82	11.86	-4764.66	0.00	
13125.00†	90.000	267.322	7141.00	4863.77	7.19	-4864.55	0.00	
13225.00†	90.000	267.322	7141.00	4963.72	2.51	-4964.44	0.00	
13325.00†	90.000	267.322	7141.00	5063.68	-2.16	-5064.33	0.00	
13425.00†	90.000	267.322	7141.00	5163.63	-6.83	-5164.22	0.00	
13525.00†	90.000	267.322	7141.00	5263.59	-11.50	-5264.11	0.00	
13625.00†	90.000	267.322	7141.00	5363.54	-16.17	-5364.00	0.00	
13725.00†	90.000	267.322	7141.00	5463.50	-20.84	-5463.89	0.00	
13825.00†	90.000	267.322	7141.00	5563.45	-25.52	-5563.78	0.00	
13925.00†	90.000	267.322	7141.00	5663.40	-30.19	-5663.67	0.00	
14025.00†	90.000	267.322	7141.00	5763.36	-34.86	-5763.56	0.00	
14125.00†	90.000	267.322	7141.00	5863.31	-39.53	-5863.46	0.00	
14225.00†	90.000	267.322	7141.00	5963.27	-44.20	-5963.35	0.00	
14325.00†	90.000	267.322	7141.00	6063.22	-48.87	-6063.24	0.00	
14425.00†	90.000	267.322	7141.00	6163.17	-53.55	-6163.13	0.00	



Planned Wellpath Report

GOETZEL 32C-30-M2 REV-A.0 PWP

Page 7 of 8



REFERENCE WELLPATH IDENTIFICATION

Operator	SYNERGY RESOURCES CORPORATION	Slot	SLOT#13 GOETZEL 32C-30-M2 (2317'FSL & 2053'FWL SEC.29
Area	COLORADO	Well	GOETZEL 32C-30-M2
Field	WELD COUNTY (NAD83,TRUE NORTH)	Wellbore	GOETZEL 32C-30-M2 PWB
Facility	SEC.29-T06N-R66W		

WELLPATH DATA (166 stations) † = interpolated/extrapolated station

MD [ft]	Inclination [°]	Azimuth [°]	TVD [ft]	Vert Sect [ft]	North [ft]	East [ft]	DLS [°/100ft]	Comments
14525.00†	90.000	267.322	7141.00	6263.13	-58.22	-6263.02	0.00	
14625.00†	90.000	267.322	7141.00	6363.08	-62.89	-6362.91	0.00	
14725.00†	90.000	267.322	7141.00	6463.04	-67.56	-6462.80	0.00	
14825.00†	90.000	267.322	7141.00	6562.99	-72.23	-6562.69	0.00	
14925.00†	90.000	267.322	7141.00	6662.95	-76.90	-6662.58	0.00	
15025.00†	90.000	267.322	7141.00	6762.90	-81.58	-6762.47	0.00	
15125.00†	90.000	267.322	7141.00	6862.85	-86.25	-6862.36	0.00	
15225.00†	90.000	267.322	7141.00	6962.81	-90.92	-6962.25	0.00	
15325.00†	90.000	267.322	7141.00	7062.76	-95.59	-7062.15	0.00	
15425.00†	90.000	267.322	7141.00	7162.72	-100.26	-7162.04	0.00	
15525.00†	90.000	267.322	7141.00	7262.67	-104.93	-7261.93	0.00	
15625.00†	90.000	267.322	7141.00	7362.62	-109.61	-7361.82	0.00	
15725.00†	90.000	267.322	7141.00	7462.58	-114.28	-7461.71	0.00	
15825.00†	90.000	267.322	7141.00	7562.53	-118.95	-7561.60	0.00	
15925.00†	90.000	267.322	7141.00	7662.49	-123.62	-7661.49	0.00	
16005.21	90.000	267.322	7141.00 ²	7742.66	-127.37	-7741.61	0.00	End of Tangent

HOLE & CASING SECTIONS - Ref Wellbore: GOETZEL 32C-30-M2 PWB Ref Wellpath: GOETZEL 32C-30-M2 REV-A.0 PWP

String/Diameter	Start MD [ft]	End MD [ft]	Interval [ft]	Start TVD [ft]	End TVD [ft]	Start N/S [ft]	Start E/W [ft]	End N/S [ft]	End E/W [ft]
13.5in Open Hole	25.00	1700.00	1675.00	25.00	1700.00	0.00	0.00	0.00	0.00
8.5in Open Hole	1700.00	16005.00	14305.00	1700.00	7141.00	0.00	0.00	-127.36	-7741.40



Planned Wellpath Report

GOETZEL 32C-30-M2 REV-A.0 PWP

Page 8 of 8



REFERENCE WELLPATH IDENTIFICATION

Operator	SYNERGY RESOURCES CORPORATION	Slot	SLOT#13 GOETZEL 32C-30-M2 (2317'FSL & 2053'FWL SEC.29
Area	COLORADO	Well	GOETZEL 32C-30-M2
Field	WELD COUNTY (NAD83,TRUE NORTH)	Wellbore	GOETZEL 32C-30-M2 PWB
Facility	SEC.29-T06N-R66W		

TARGETS

Name	MD [ft]	TVD [ft]	North [ft]	East [ft]	Grid East [US ft]	Grid North [US ft]	Latitude	Longitude	Shape
SEC.29-T06N-R66W NORTHERN		9.00	1182.60	821.14	3194449.66	1411671.99	40°27'40.817"N	104°48'04.259"W	polygon
SEC.29-T06N-R66W SOUTHERN		9.00	1182.60	821.14	3194449.66	1411671.99	40°27'40.817"N	104°48'04.259"W	polygon
SEC.30-T06N-R66W NORTHERN		9.00	1182.60	821.14	3194449.66	1411671.99	40°27'40.817"N	104°48'04.259"W	polygon
SEC.30-T06N-R66W SOUTHERN		9.00	1182.60	821.14	3194449.66	1411671.99	40°27'40.817"N	104°48'04.259"W	polygon
GOETZEL 32C-30-M2 BHL ON PLAT (2551'FSL & 510'FWL SEC.30)		7141.00	-107.81	-7381.78	3186257.43	1410317.30	40°27'28.055"N	104°49'50.376"W	circle
2) GOETZEL 32C-30-M2 BHL REV-1 (2551'FSL & 150'FWL SEC.30)	16005.21	7141.00	-127.37	-7741.61	3185897.78	1410294.91	40°27'27.860"N	104°49'55.031"W	point
1) GOETZEL 32C-30-M2 TOP OF PROD REV-1 (2562'FSL & 2573'FWL SEC.29)	7733.66	7141.00	259.05	520.91	3194156.70	1410746.15	40°27'31.691"N	104°48'08.143"W	circle

SURVEY PROGRAM - Ref Wellbore: GOETZEL 32C-30-M2 PWB Ref Wellpath: GOETZEL 32C-30-M2 REV-A.0 PWP

Start MD [ft]	End MD [ft]	Positional Uncertainty Model	Log Name/Comment	Wellbore
25.00	1700.00	Custom BHI NaviTrak (Standard Rotating+Axial Corr) (Rockies 0.03Gt model)		GOETZEL 32C-30-M2 PWB
1700.00	16005.21	Custom BHI AutoTrak Curve (IFR1, Short) (Rockies 0.03Gt model)		GOETZEL 32C-30-M2 PWB