

GAMMA RAY / CCL  
CEMENT BOND  
VDL

Company	Petroleum Development Corporation	Company	Petroleum Development Corporation
Well	Wells Ranch # 31-5	Well	Wells Ranch # 31-5
Field	Wattenberg	Field	Wattenberg
County	Weld	County	Weld
State	Colo.	State	Colo.
Location:	645' FNL & 1966' FEL NW / NE	Other Services	perforate
Permanent Datum	SEC 5 TWP 5N RGE 63W	Elevation	
Log Measured From	GL KB	K.B. 4725'	
Drilling Measured From	KB	D.F. 4724'	
		G.L. 4710'	
Date	12-16-02		
Run Number	one		
Depth Driller	6963'		
Depth Logger	6932'		
Bottom Logged Interval	6927'-5600'		
Top Log Interval	3700'-1900'		
Open Hole Size			
Type Fluid	water		
Density / Viscosity			
Max. Recorded Temp			
Estimated Cement Top			
Time Well Ready			
Time Logger on Bottom			
Equipment Number	T2 GMVP2 BR2.13		
Location	WCR 61+WCR64 E1.5 S1 2n10		
Recorded By	R F Mesner		
Witnessed By	Steve Trippett		
Run Number			
Bit			
From			
To			
Size			
Weight			
From			
To			
Casing Record			
Surface String	Size	Wgt/Ft	Top Bottom
Prot. String			
Production String	4.5"		
Liner			

<<< Fold Here >>>

All interpretations are opinions based on inferences from electrical or other measurements and we cannot and do not guarantee the accuracy or correctness of any interpretation, and we shall not, except in the case of gross or willful negligence on our part, be liable or responsible for any loss, costs, damages, or expenses incurred or sustained by anyone resulting from any interpretation made by any of our officers, agents or employees. These interpretations are also subject to our general terms and conditions set out in our current Price Schedule.

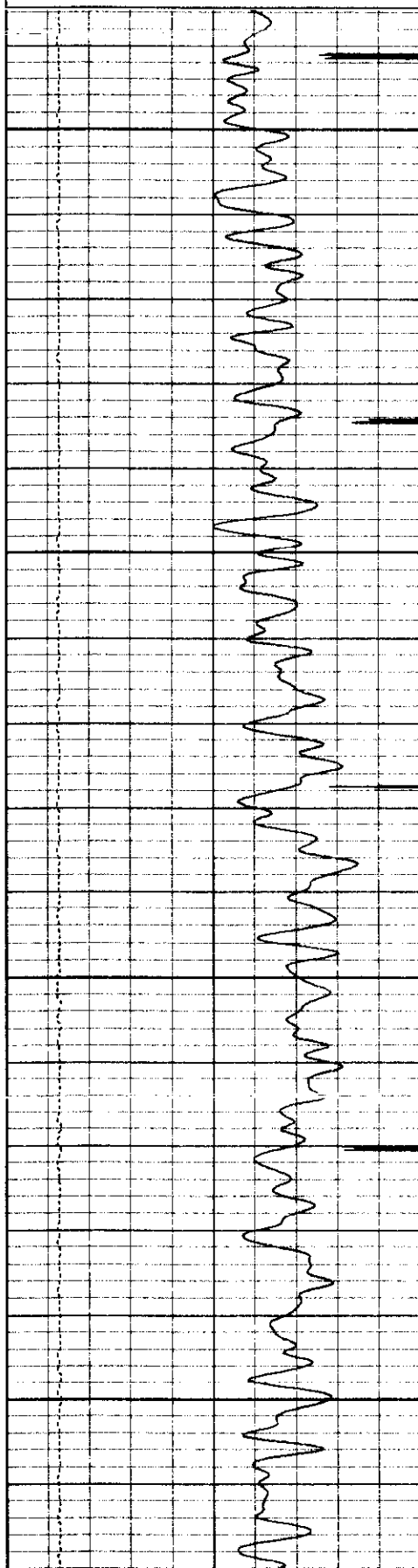
Comments

THANK-YOU FOR USING "NUEX" WIRELINE SERVICES INC. !!!

Database File: pdcw1515.ab  
Dataset Pathname: pass2  
Presentation Format: cbl01  
Dataset Creation: Mon Dec 16 13:37:34 2002 by Log 6.2\_B4  
Charted by: Depth in Feet scaled 1:240

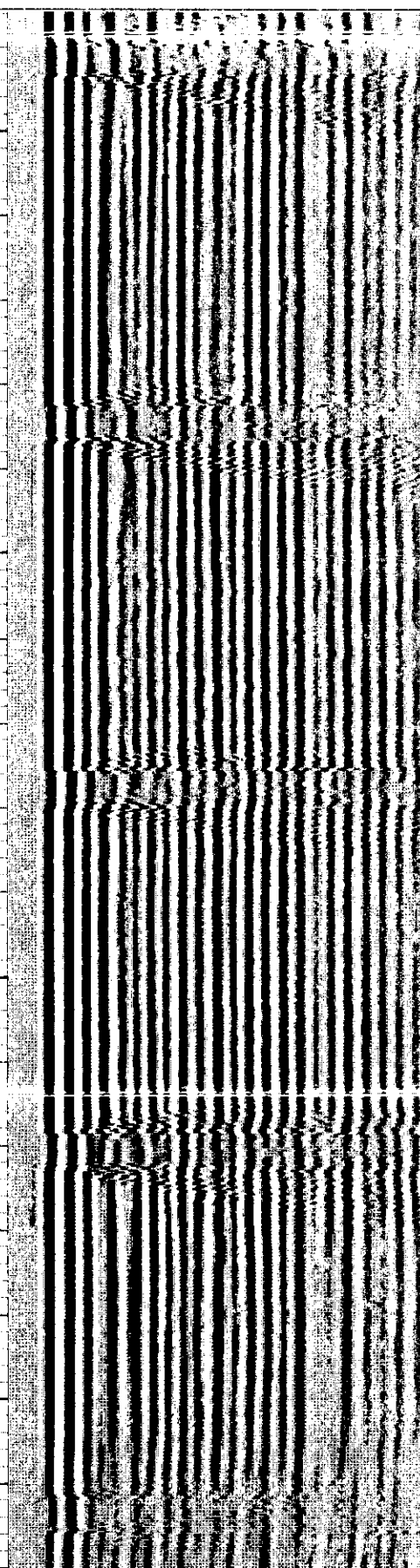
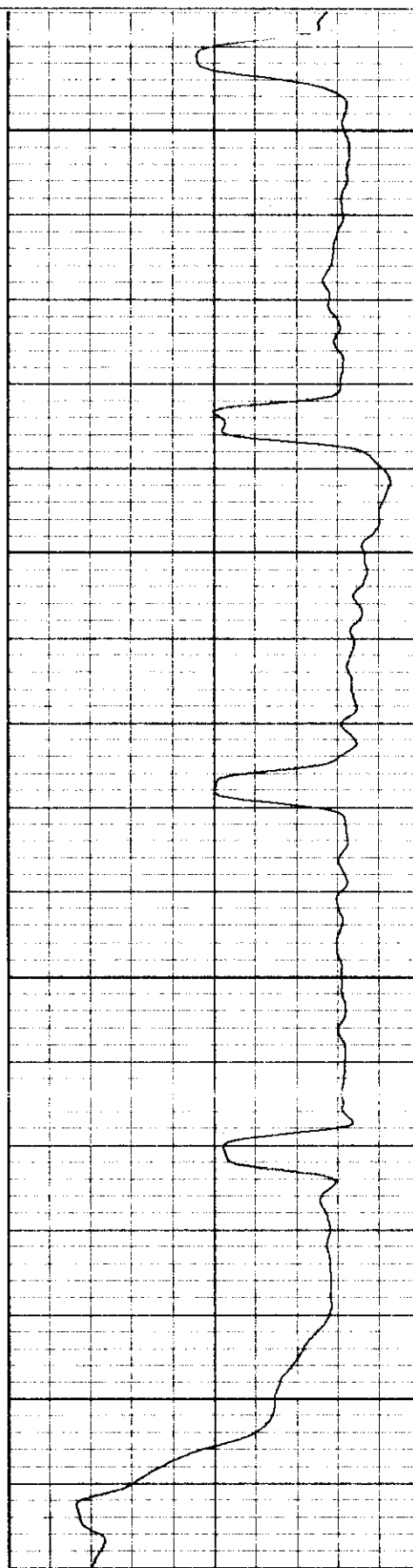
9	Collar Locator	0
20	Gamma Ray (GAPI)	130
30	LSPD (ft/min)	230

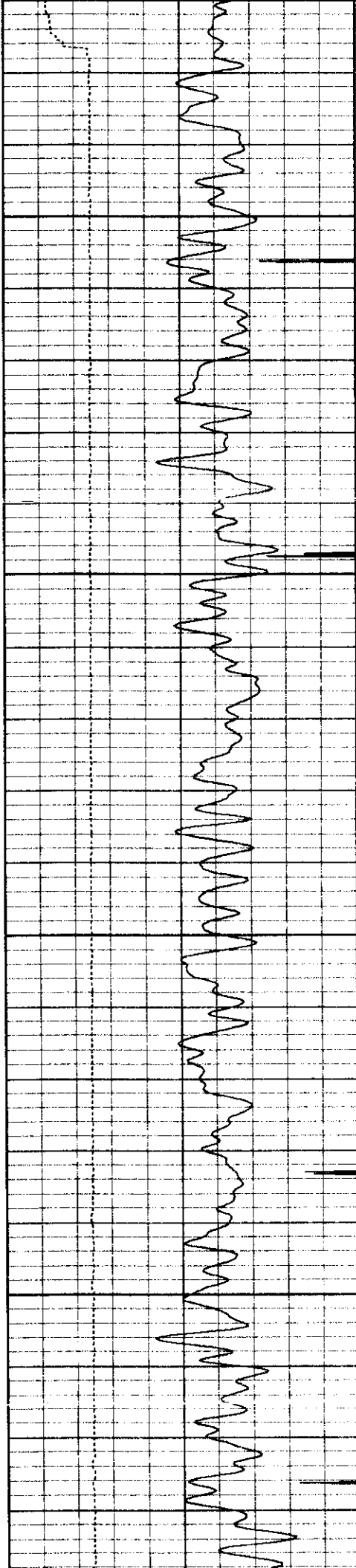
0	Amplified Amplitude (mV)	10	200	Variable Density	1200
0	Amplitude (mV)	100			



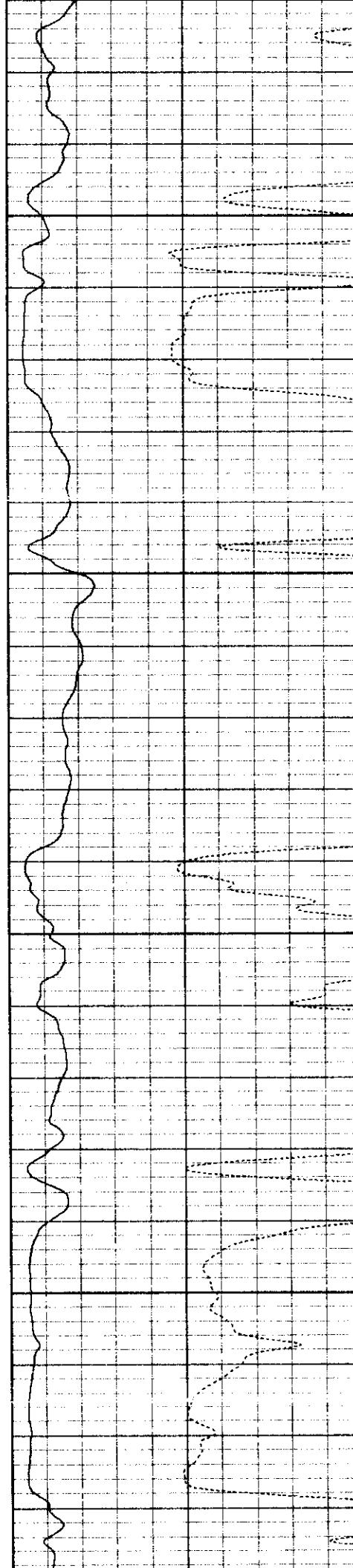
1900

2000

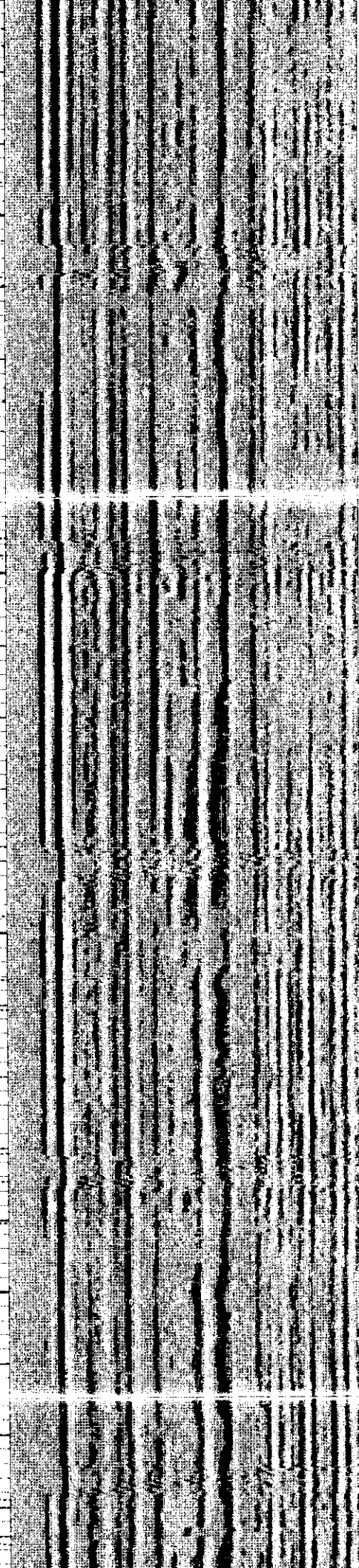


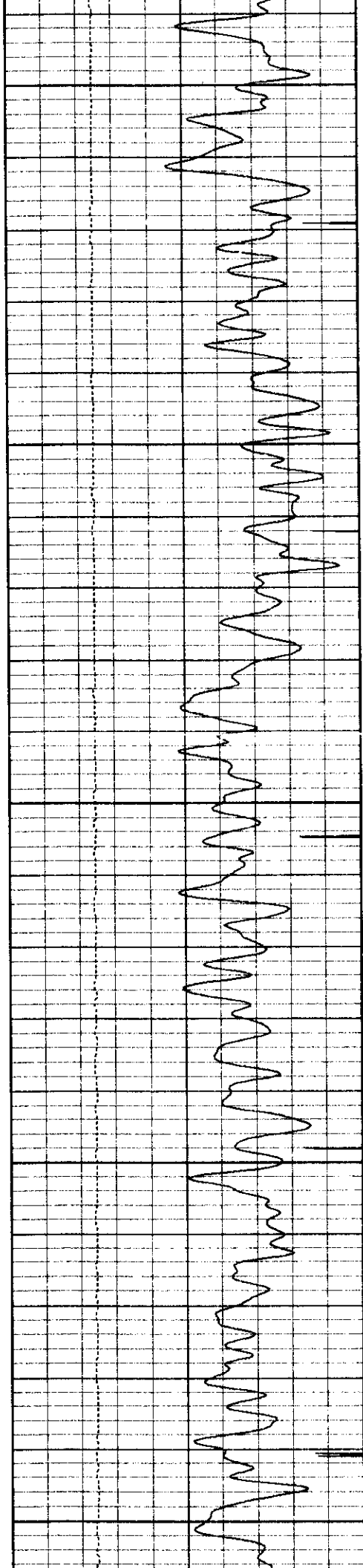


2100

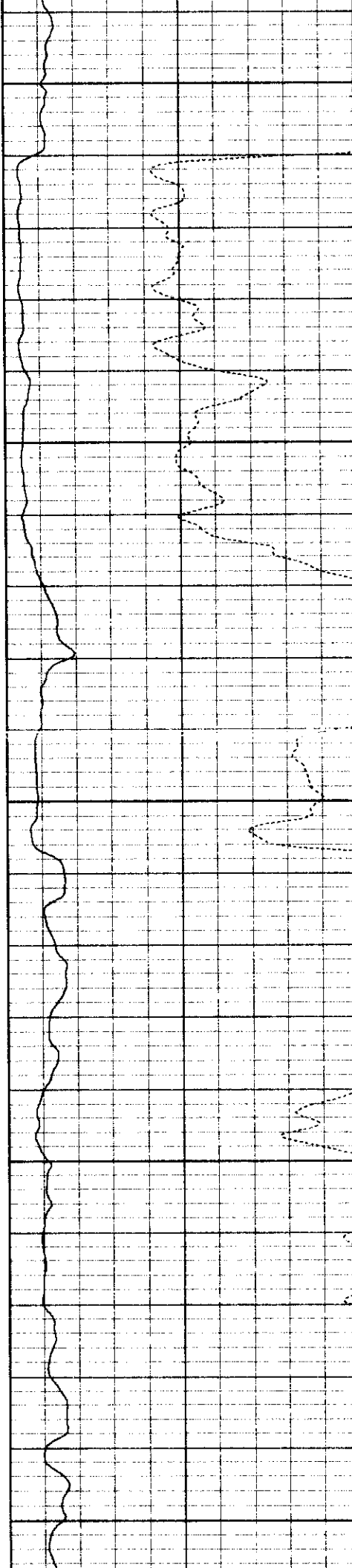


2200

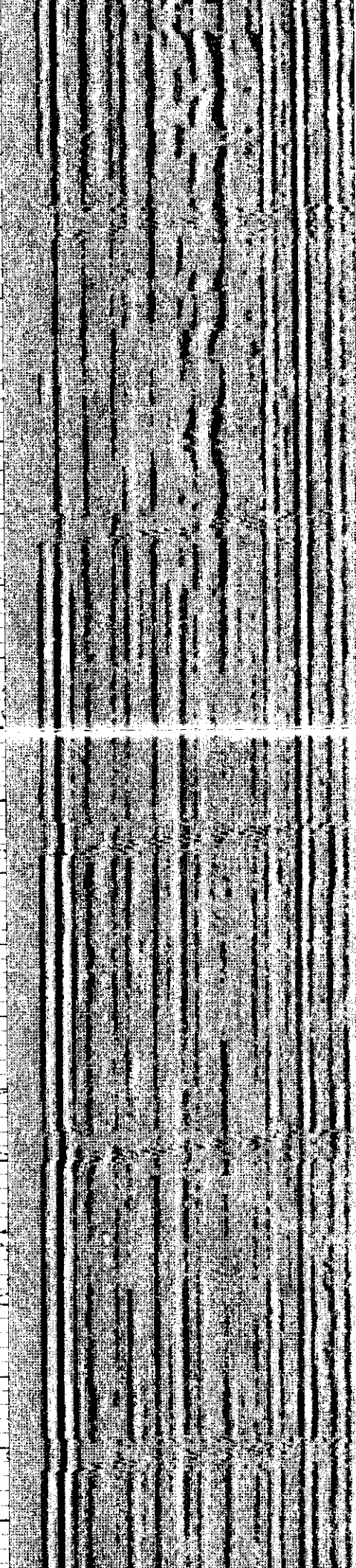




2300

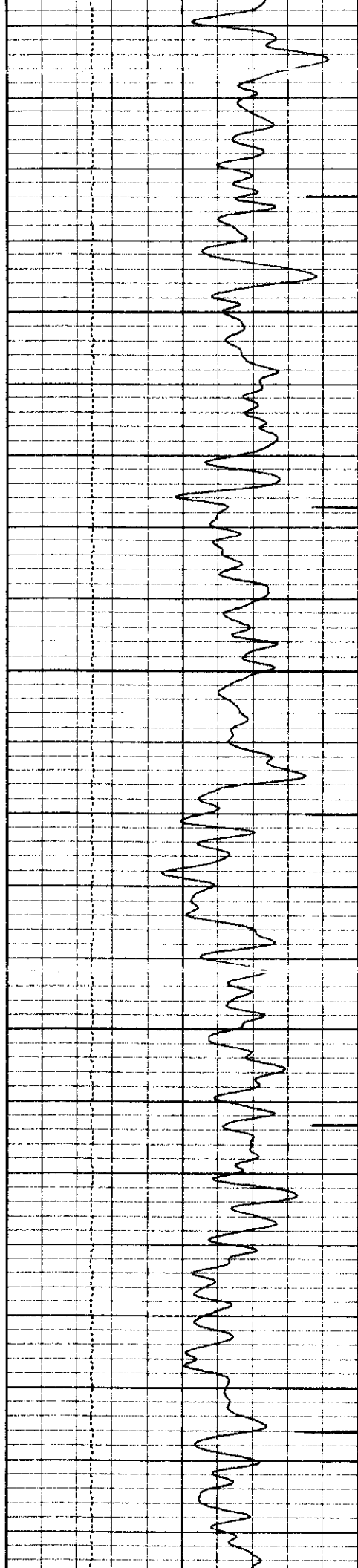


2400

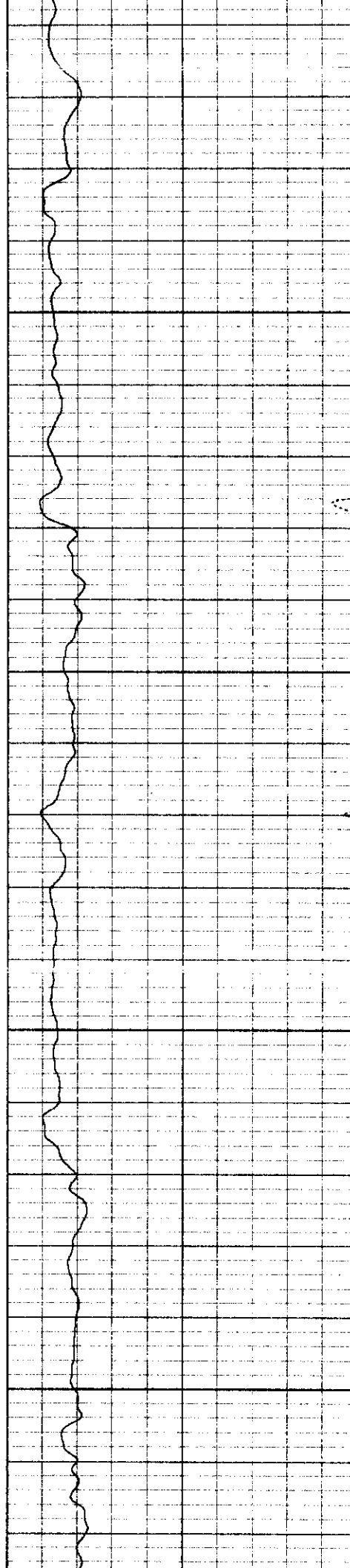


2500

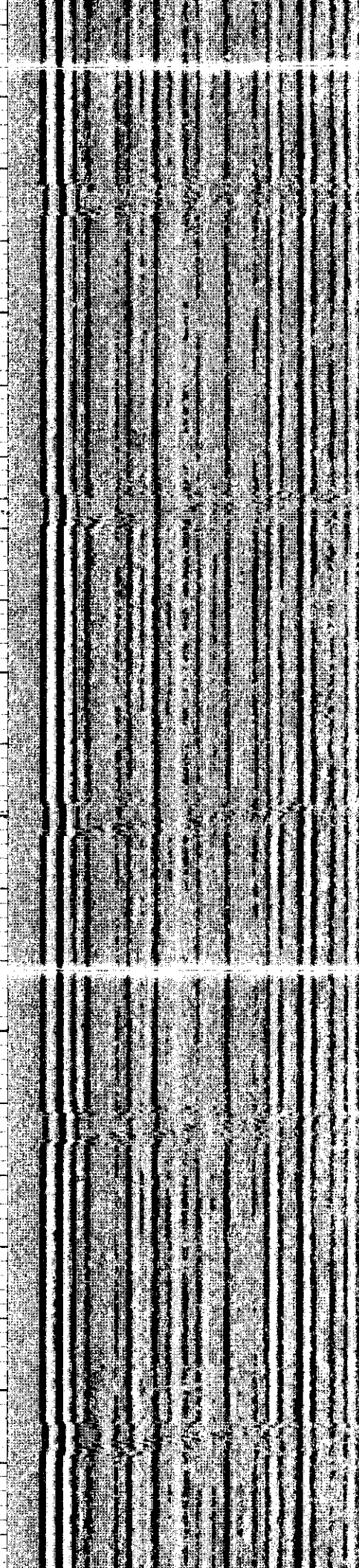


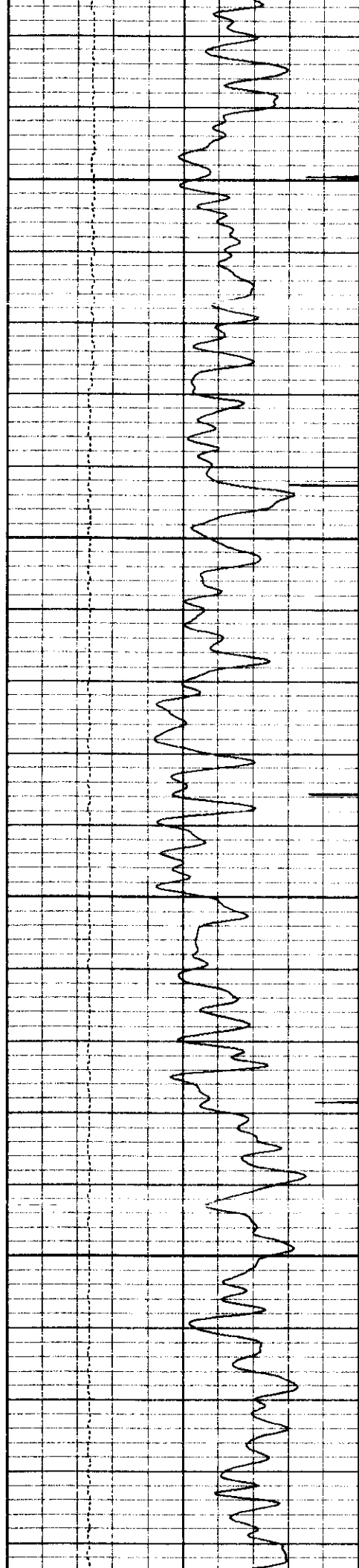


2600



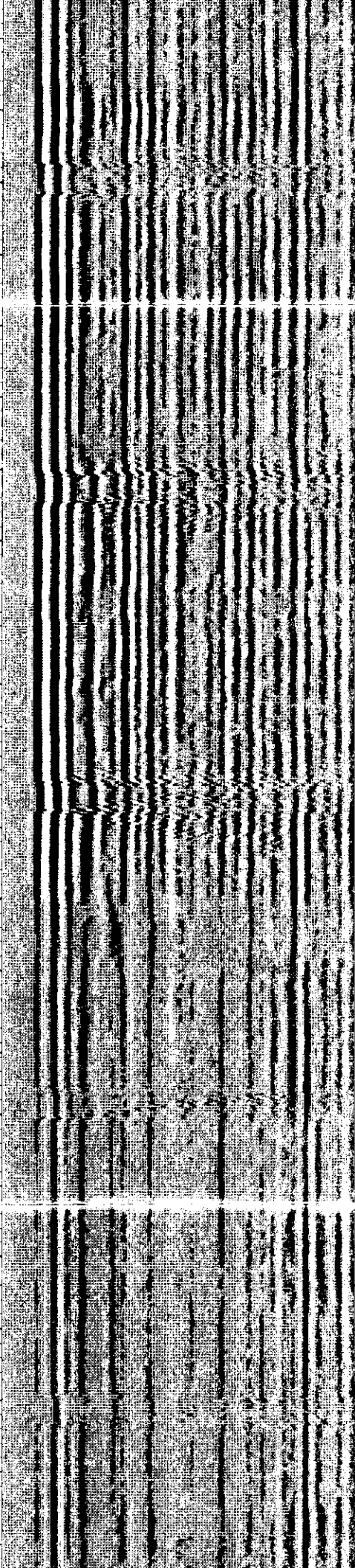
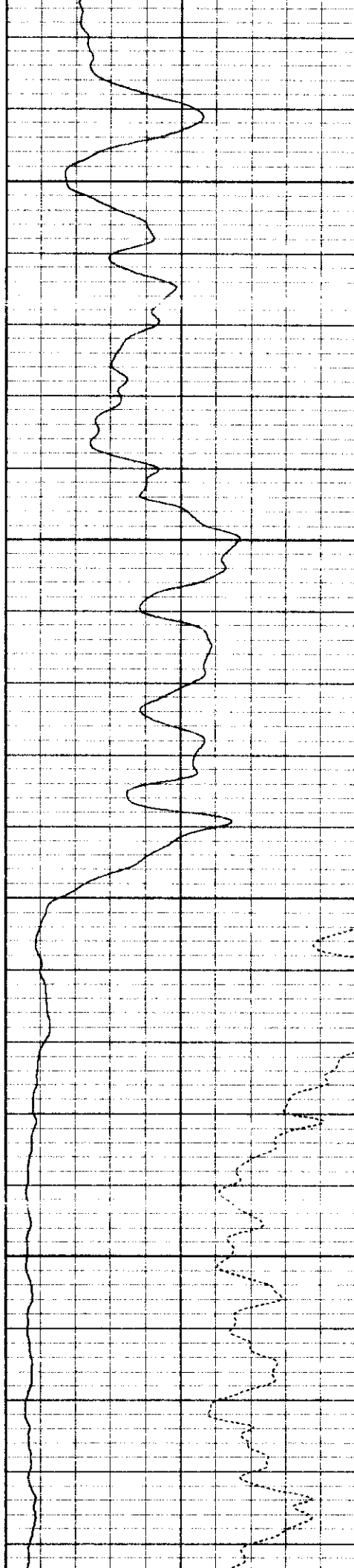
2700

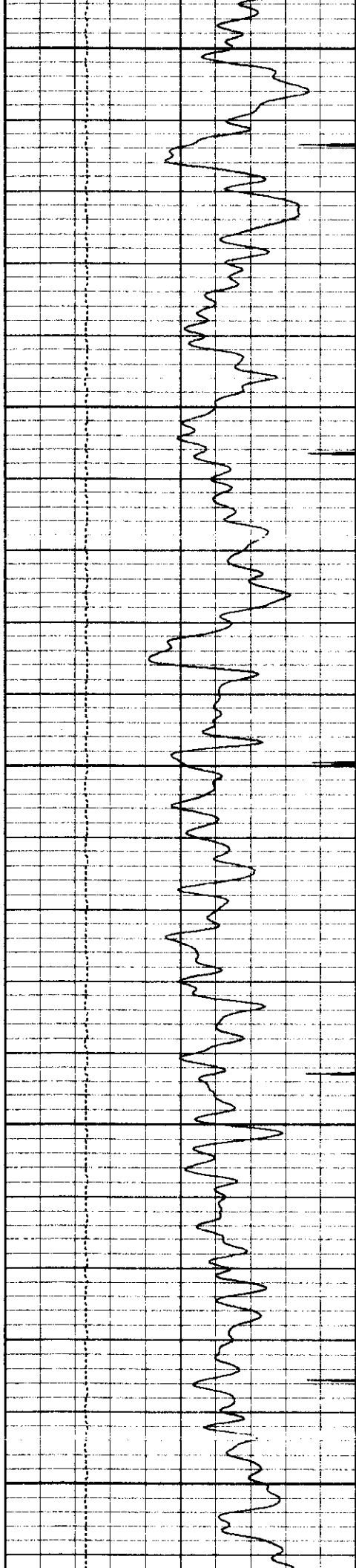




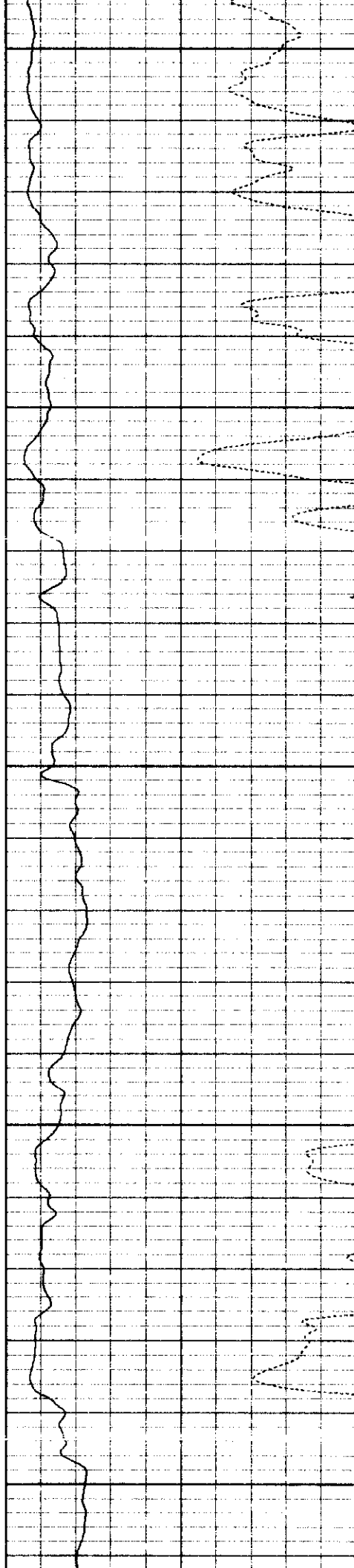
2800

2900

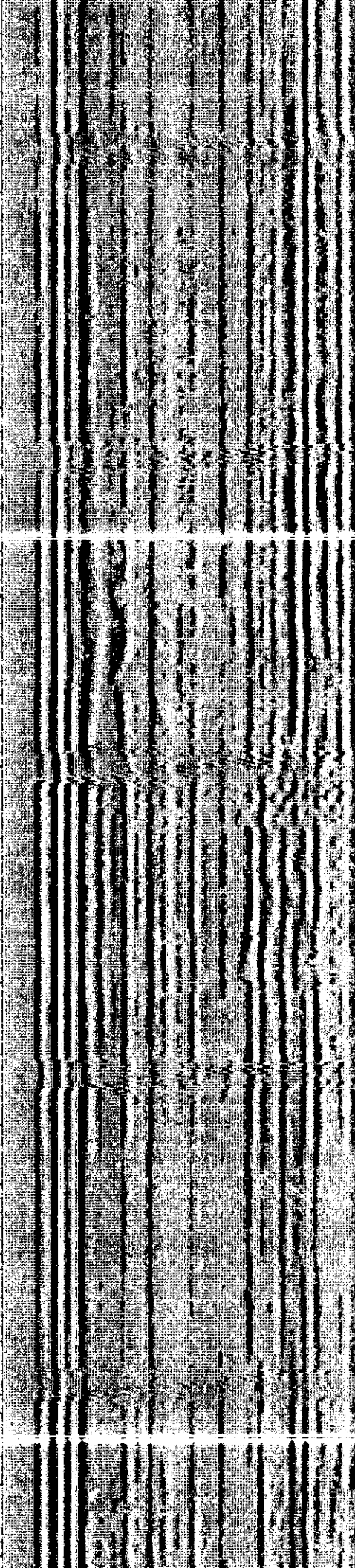


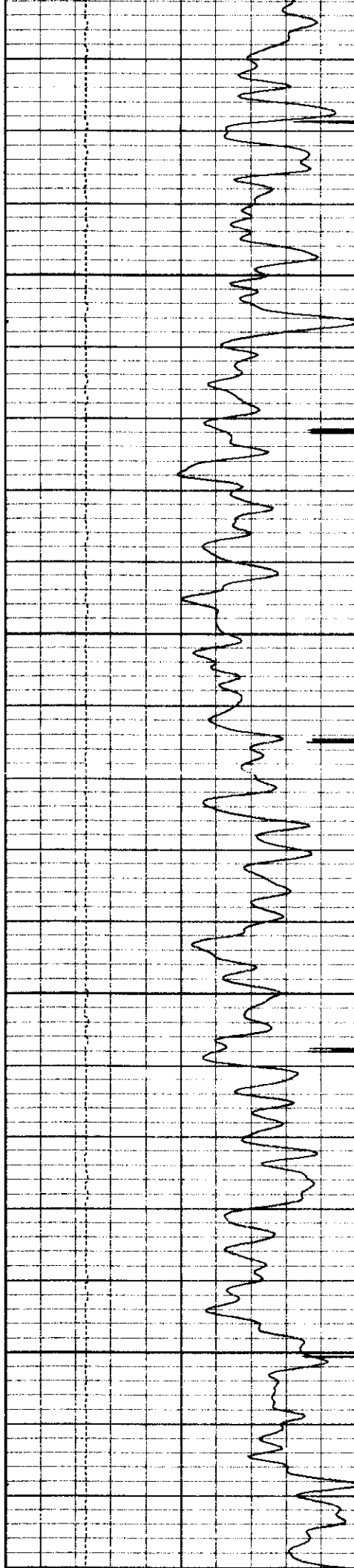


3000

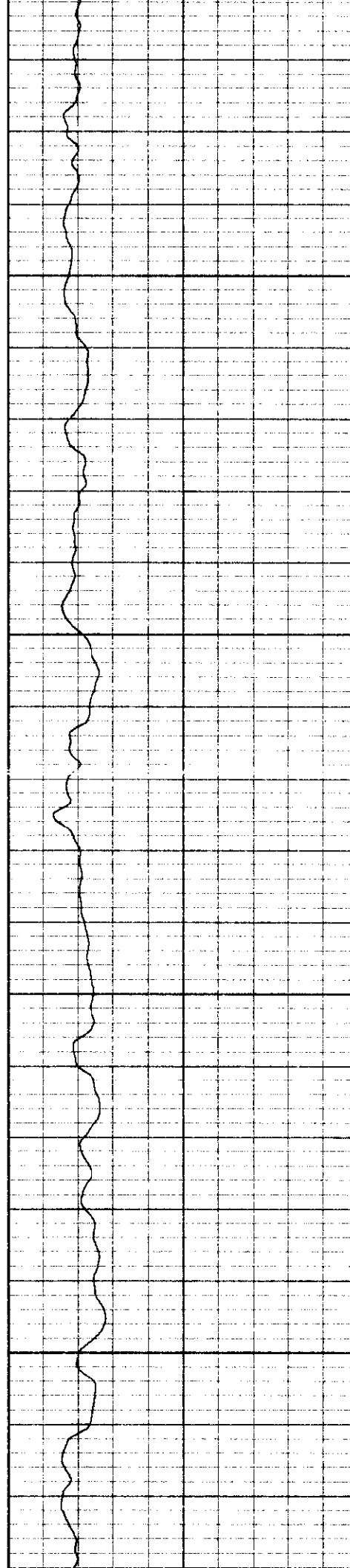


3100

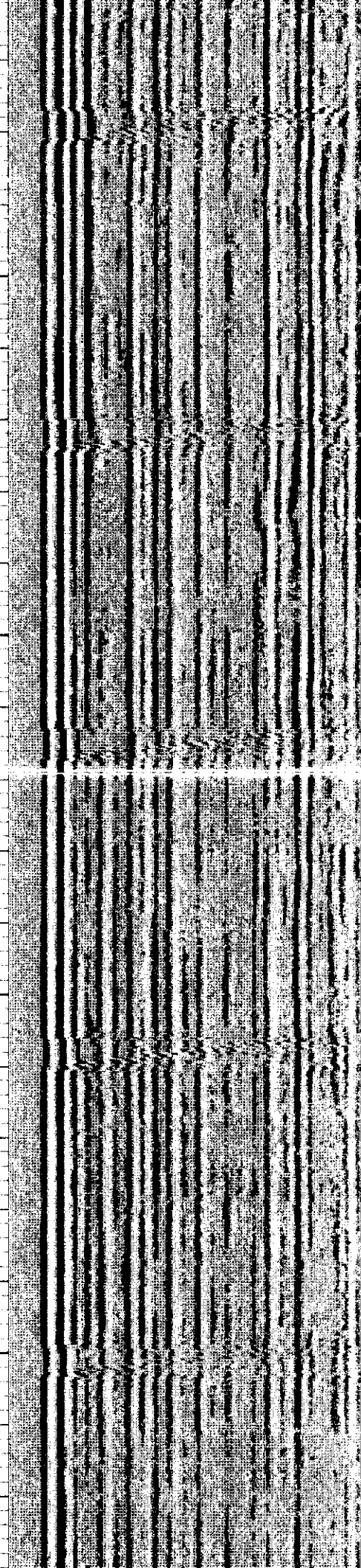




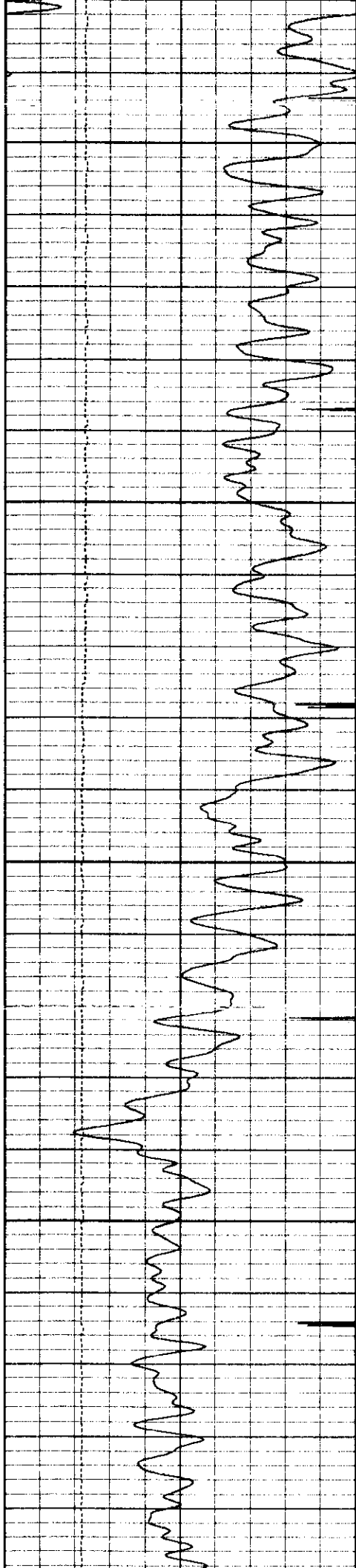
3200



3300

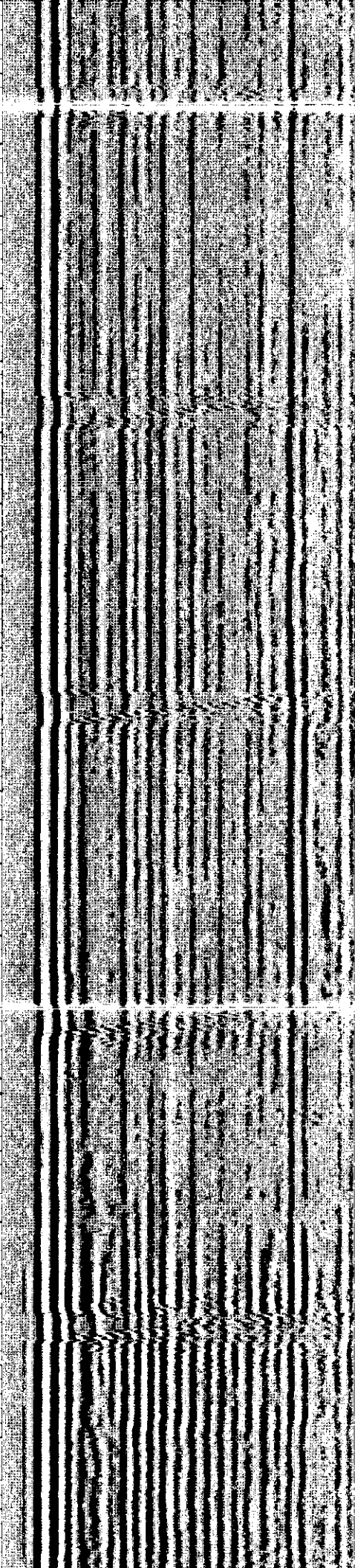
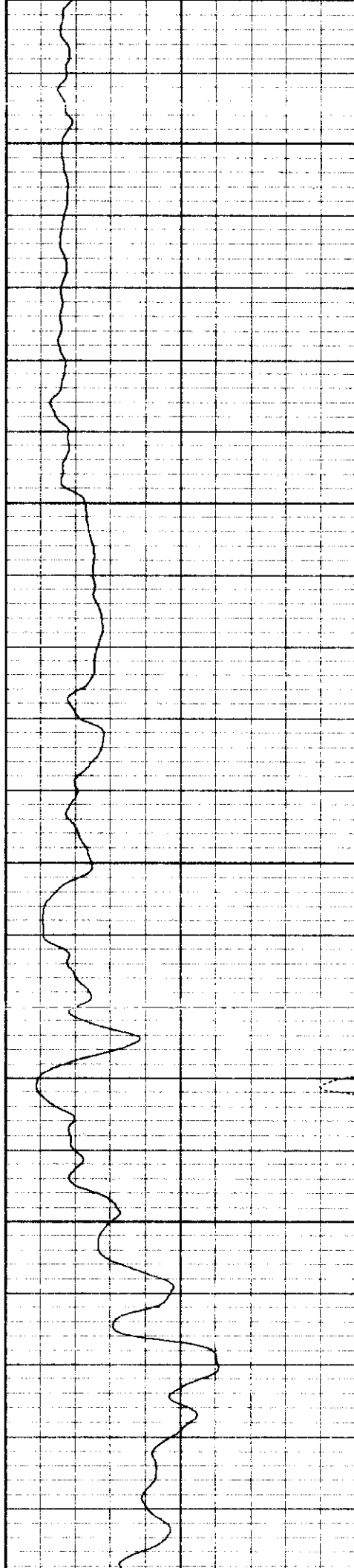


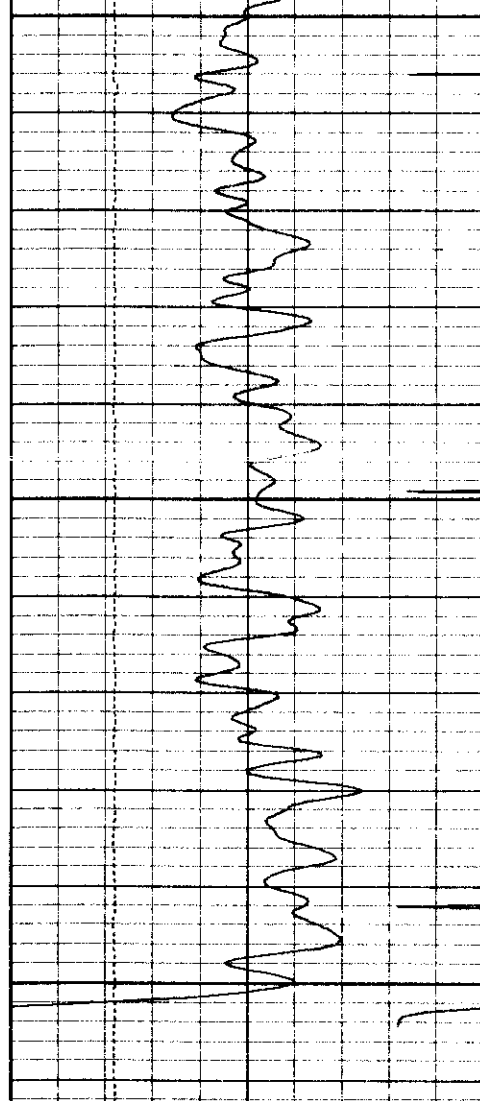




3400

3500

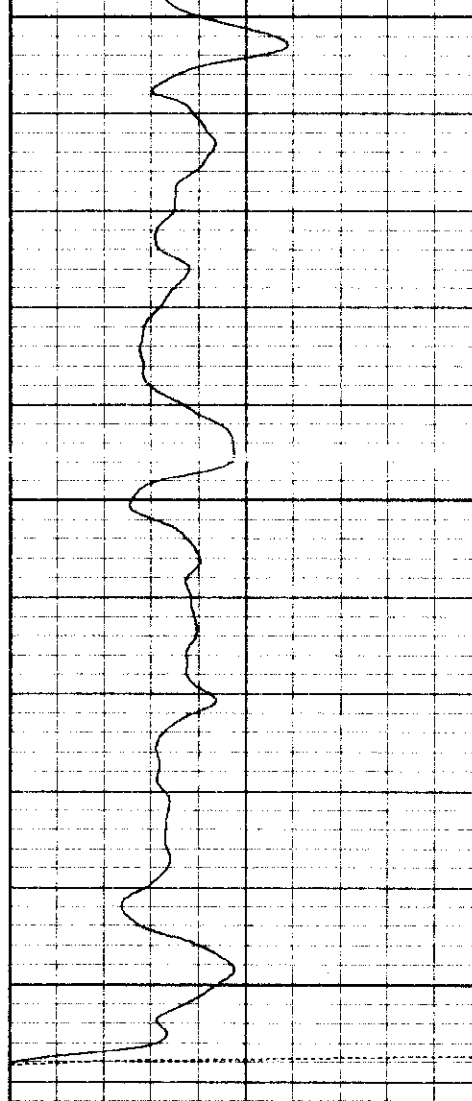




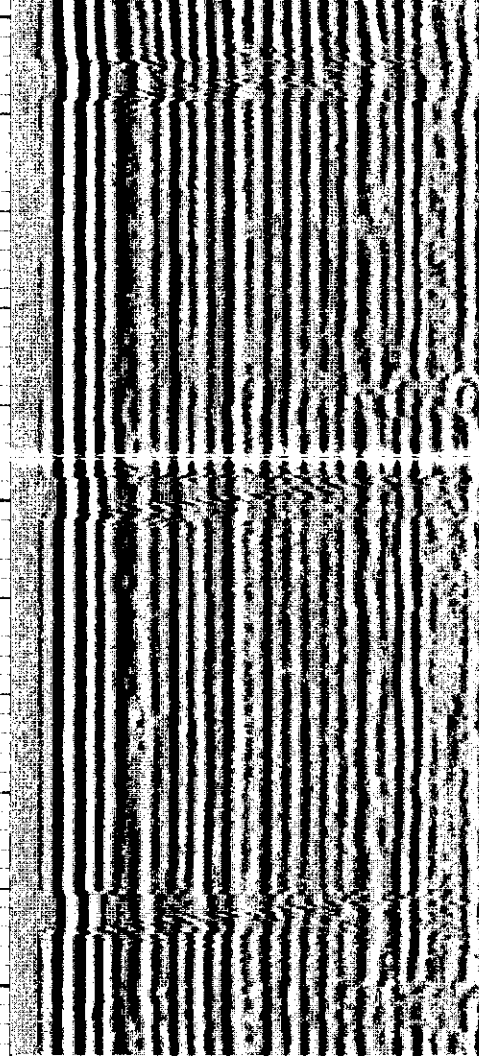
3600

3700

9	Collar Locator	0
20	Gamma Ray (GAPI)	130
30	LSPD (ft/min)	230



0	Amplified Amplitude (mV)	10
0	Amplitude (mV)	100



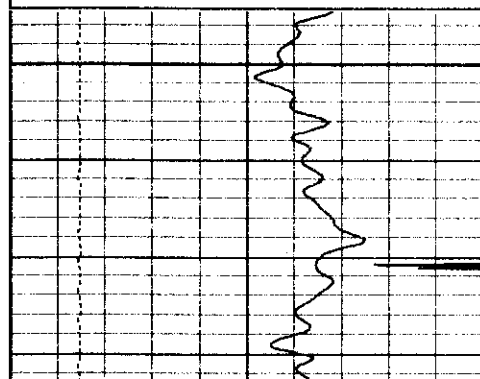
200	Variable Density	1200
-----	------------------	------

Database File: pdcwr315.db  
 Dataset Pathname: pass1  
 Presentation Format: cbl01  
 Dataset Creation: Mon Dec 16 13:14:52 2002 by Log 6.2\_B4  
 Charted by: Depth in Feet scaled 1:240

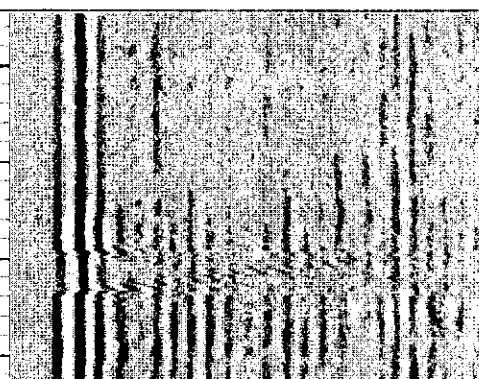
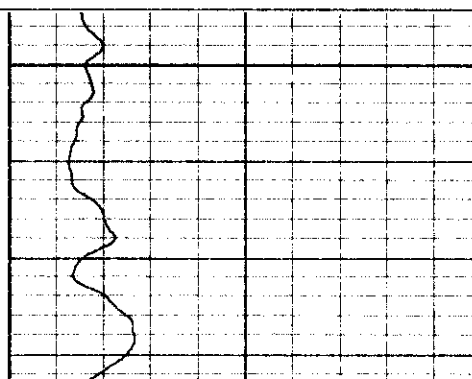
9	Collar Locator	0
0	Gamma Ray (GAPI)	150
30	LSPD (ft/min)	230

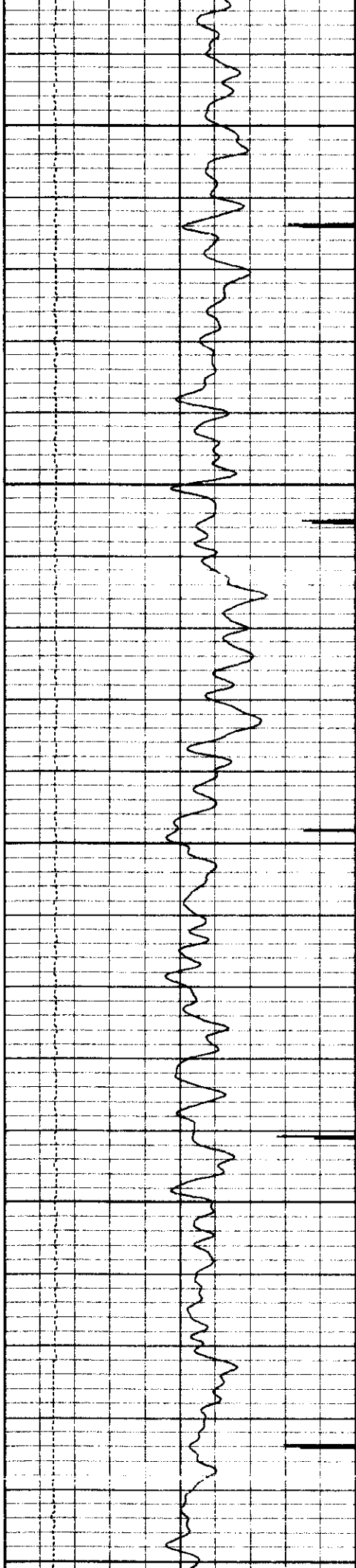
0	Amplified Amplitude (mV)	10
0	Amplitude (mV)	100

200	Variable Density	1200
-----	------------------	------

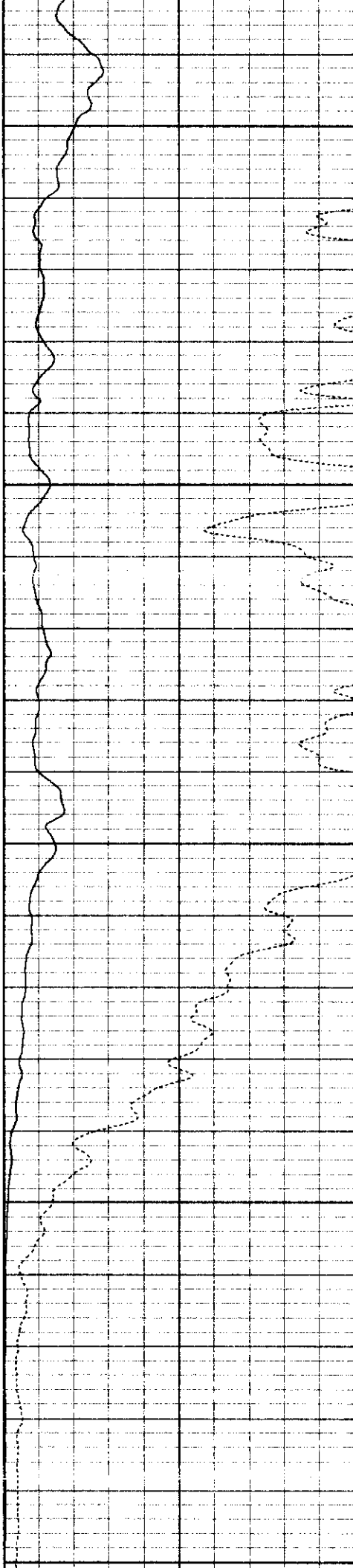


5900

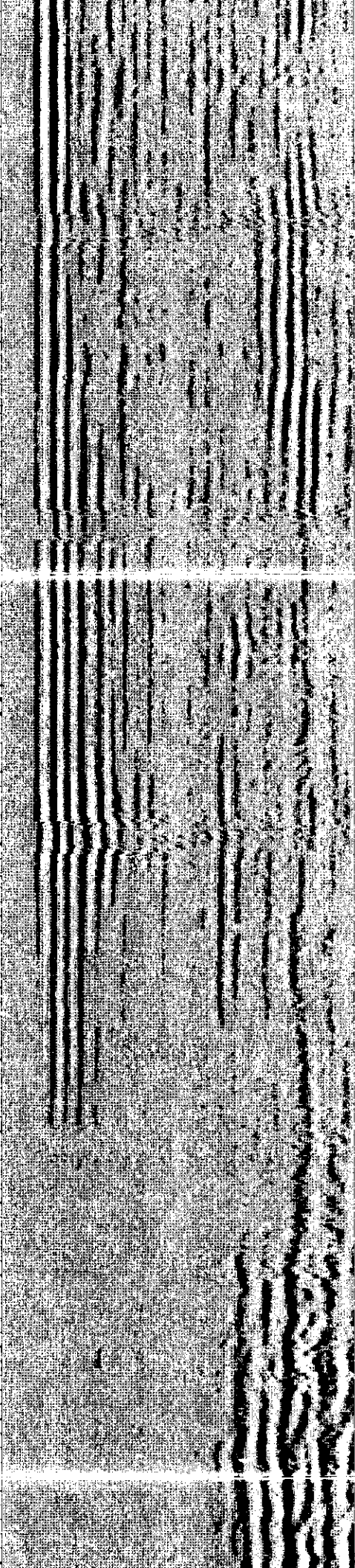


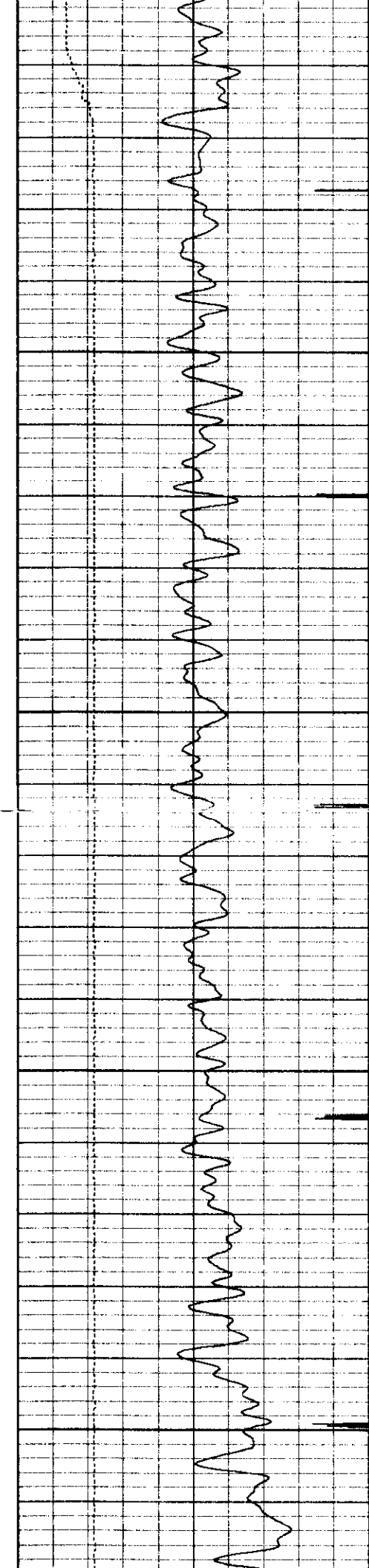


6000

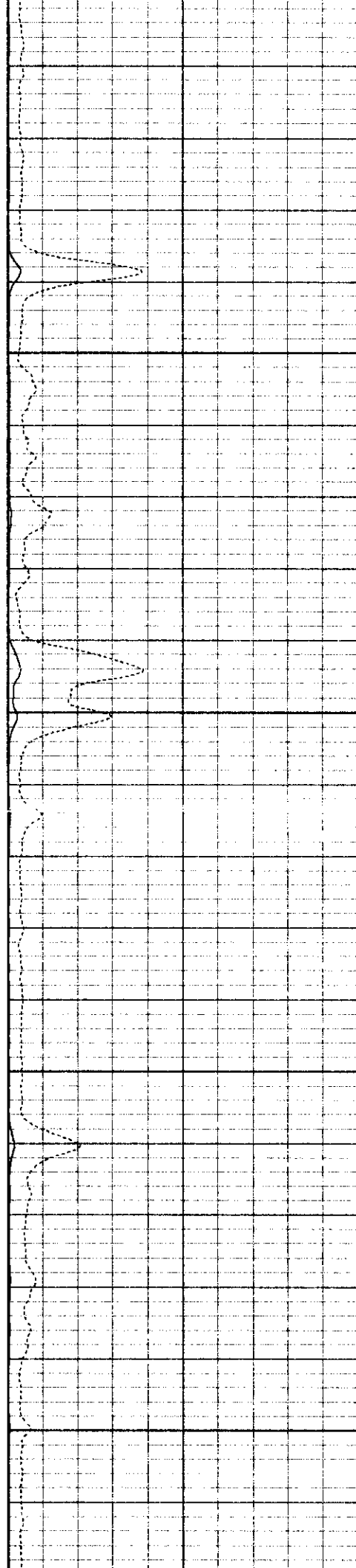


6100

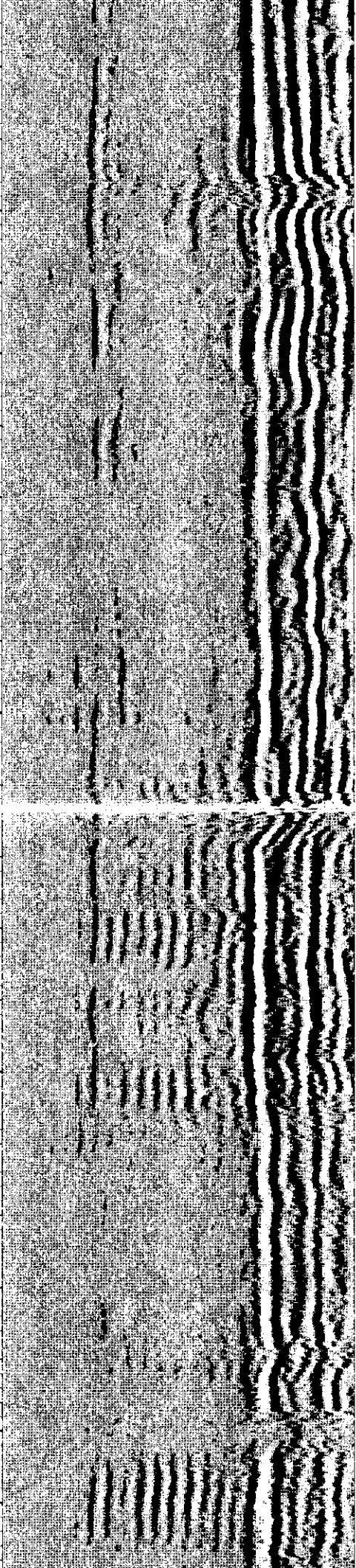




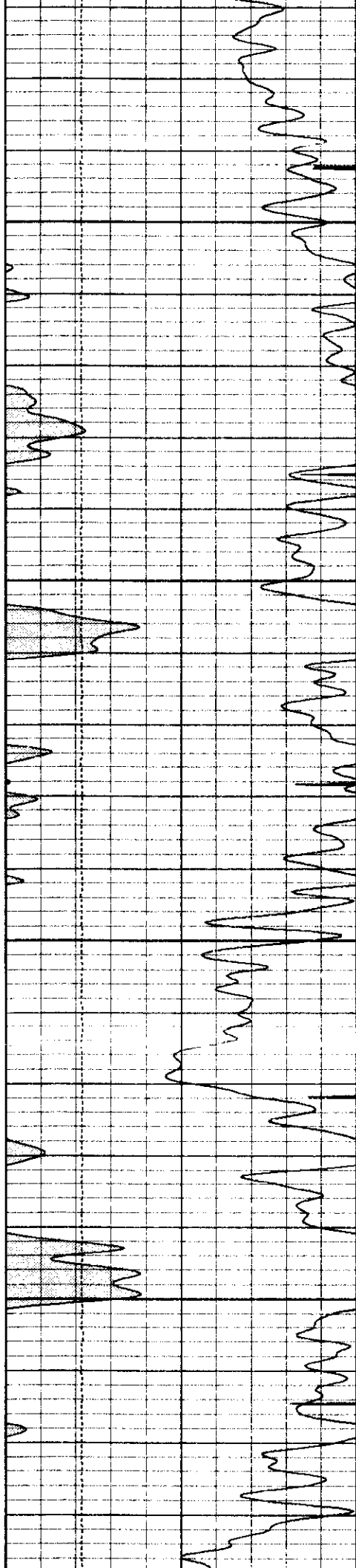
6200



6300



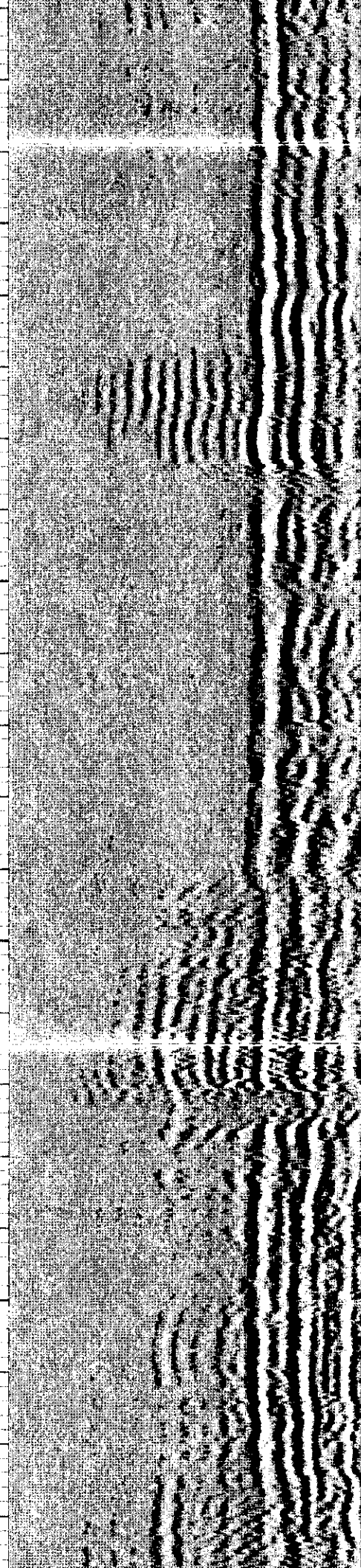
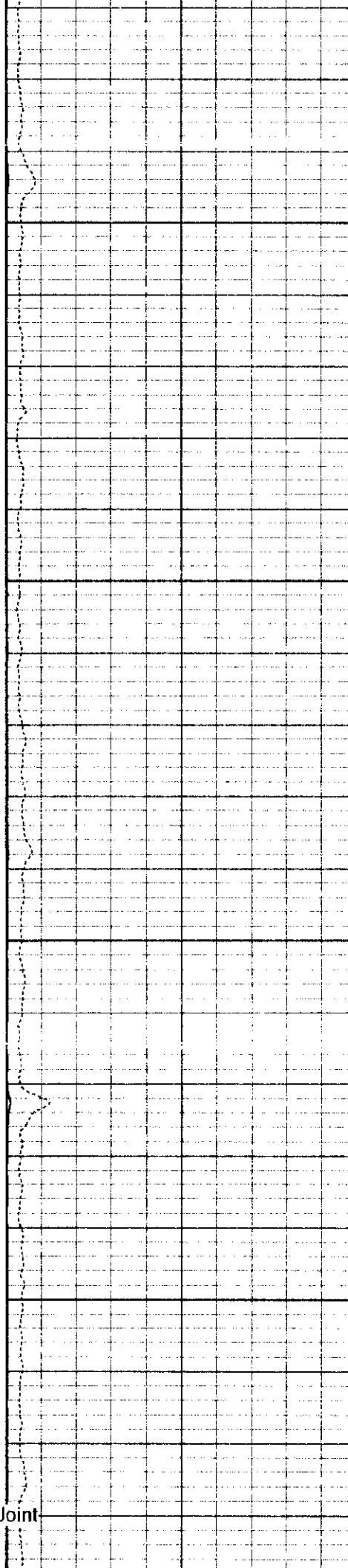


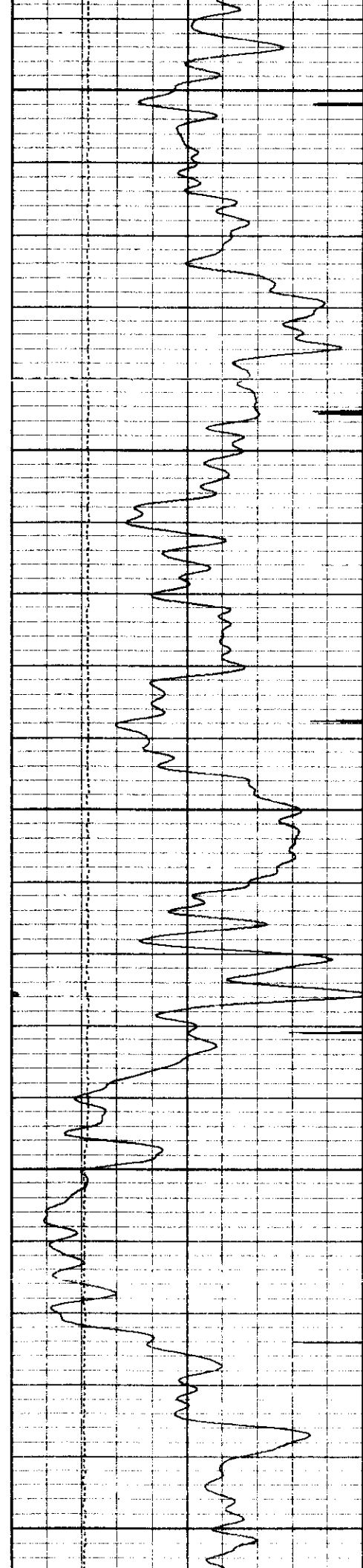


6400

6500

← Flag Joint





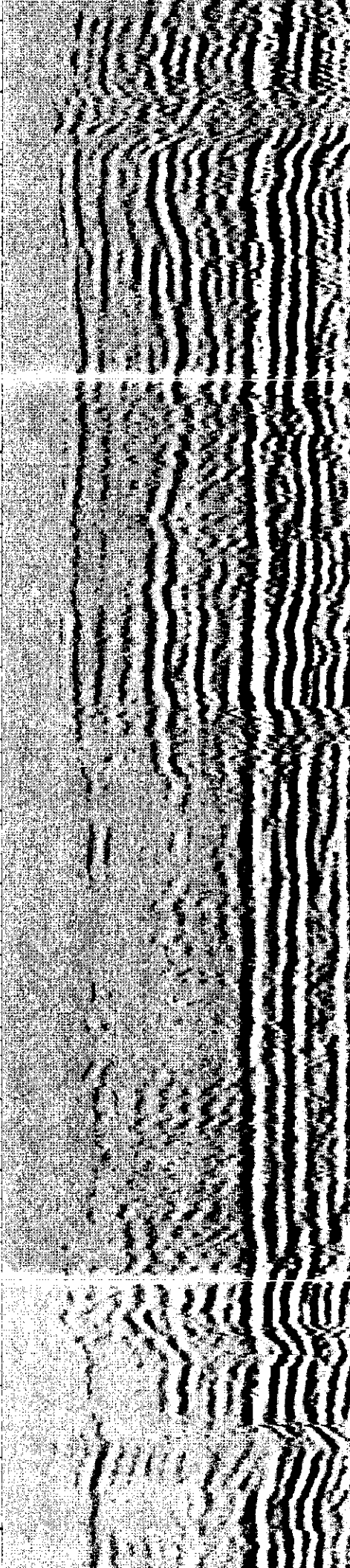
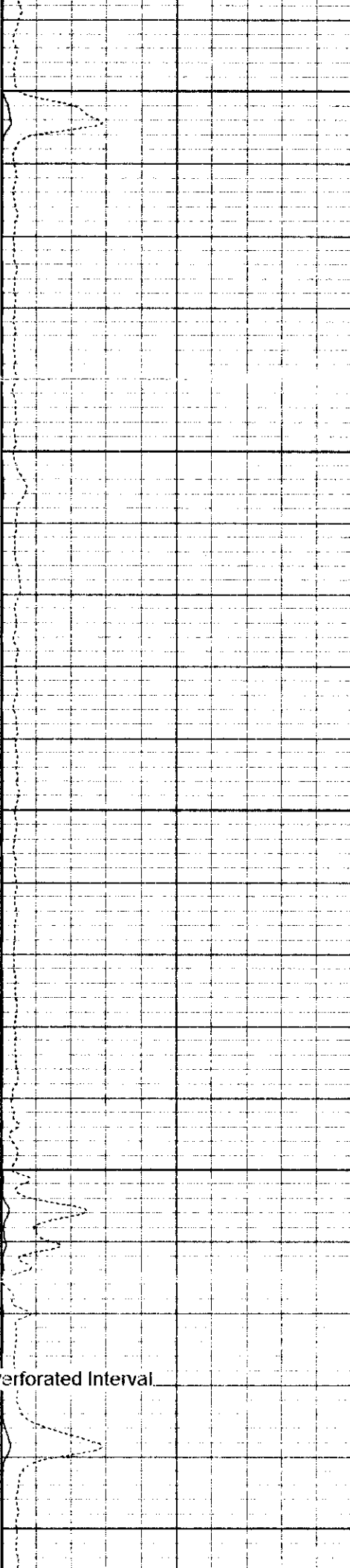
6600

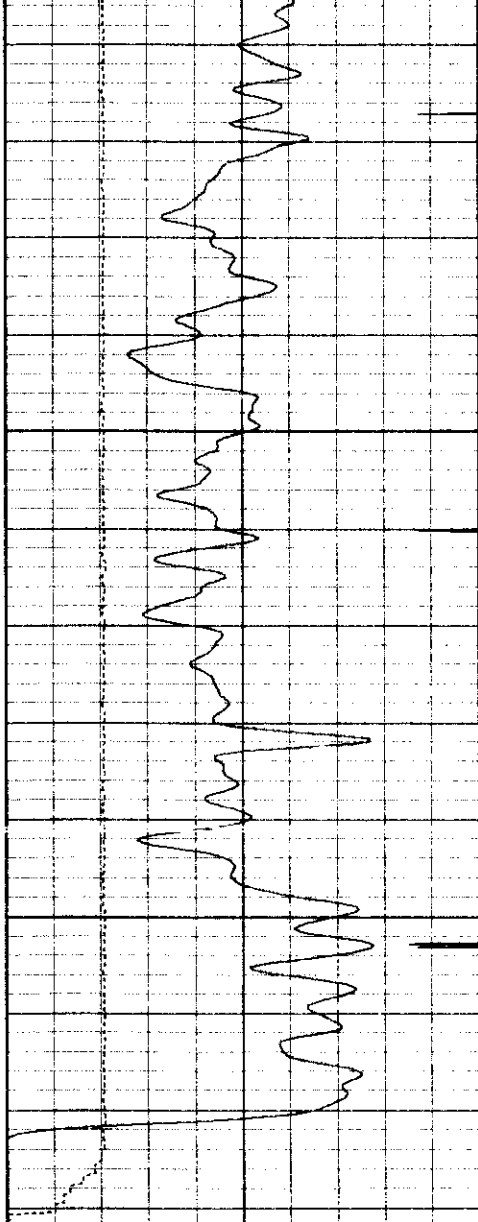
6700

6800

ooooo

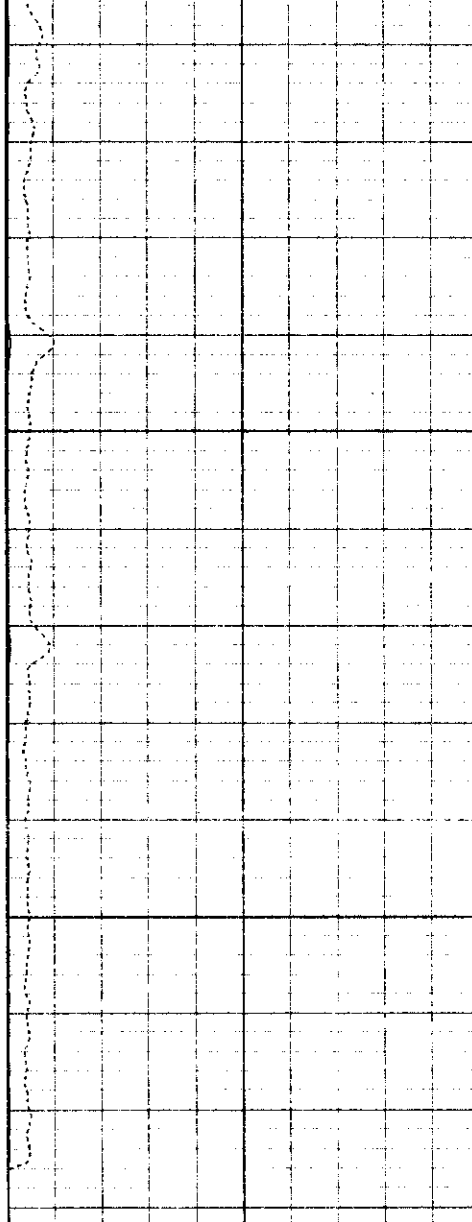
← Perforated Interval



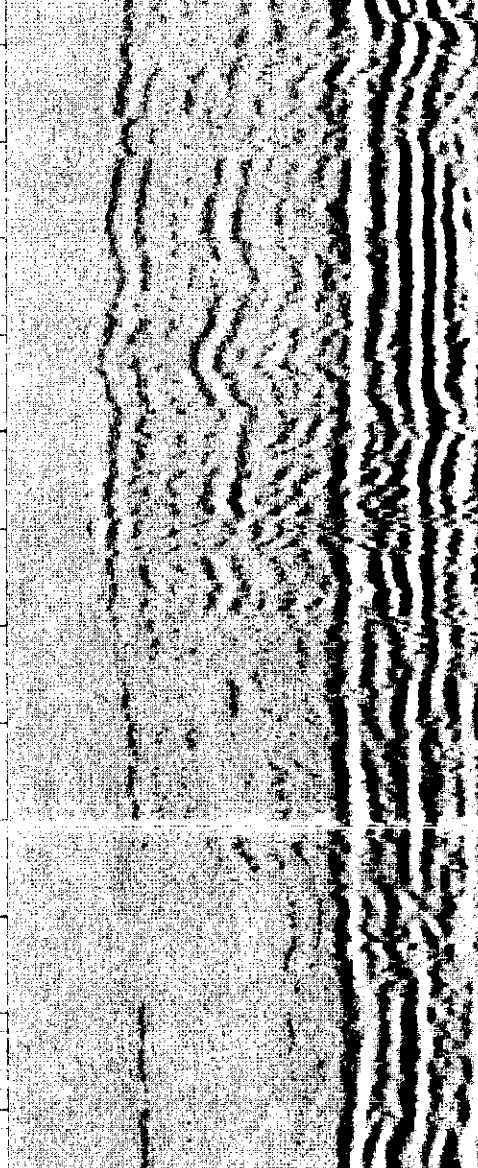


9	Collar Locator	0
0	Gamma Ray (GAPI)	150
30	LSPD (ft/min)	230

6900



0	Amplified Amplitude (mV)	10
0	Amplitude (mV)	100



200	Variable Density	1200
-----	------------------	------

