



Well State 12-4

Field Wattenberg

County Weld State Colo.

Location:

1940' FNL & 652' FWL
SW / NW

SEC 4 TWP 5N RGE 63W

Permanent Datum	GL	Elevation	4760
Log Measured From	KB		
Drilling Measured From	KB		

Other Services	
perforate	
Elevation	
K.B. 4770'	
D.F. 4769'	
G.L. 4760'	

September 5, 2003

2007

6954'

3830'-3040'

water

236 deg. F.

FOR THE OFFICIALS

WCR61+WCR64, E1.5, S.9, E.4, S.3, SEIMO

Dirk Olsen

10

size

Weight

From

19

Size

Wqgt/H-t

1

Bottom

4.5"

1

Abstract

1

11

TABLE 1

<<< Fold Here >>>

All interpretations are opinions based on inferences from electrical or other measurements and we cannot and do not guarantee the accuracy or correctness of any interpretation, and we shall not, except in the case of gross or willful negligence on our part, be liable or responsible for any loss, costs, damages, or expenses incurred or sustained by anyone resulting from any interpretation made by any of our officers, agents or employees. These interpretations are also subject to our general terms and conditions set out in our current Price Schedule.

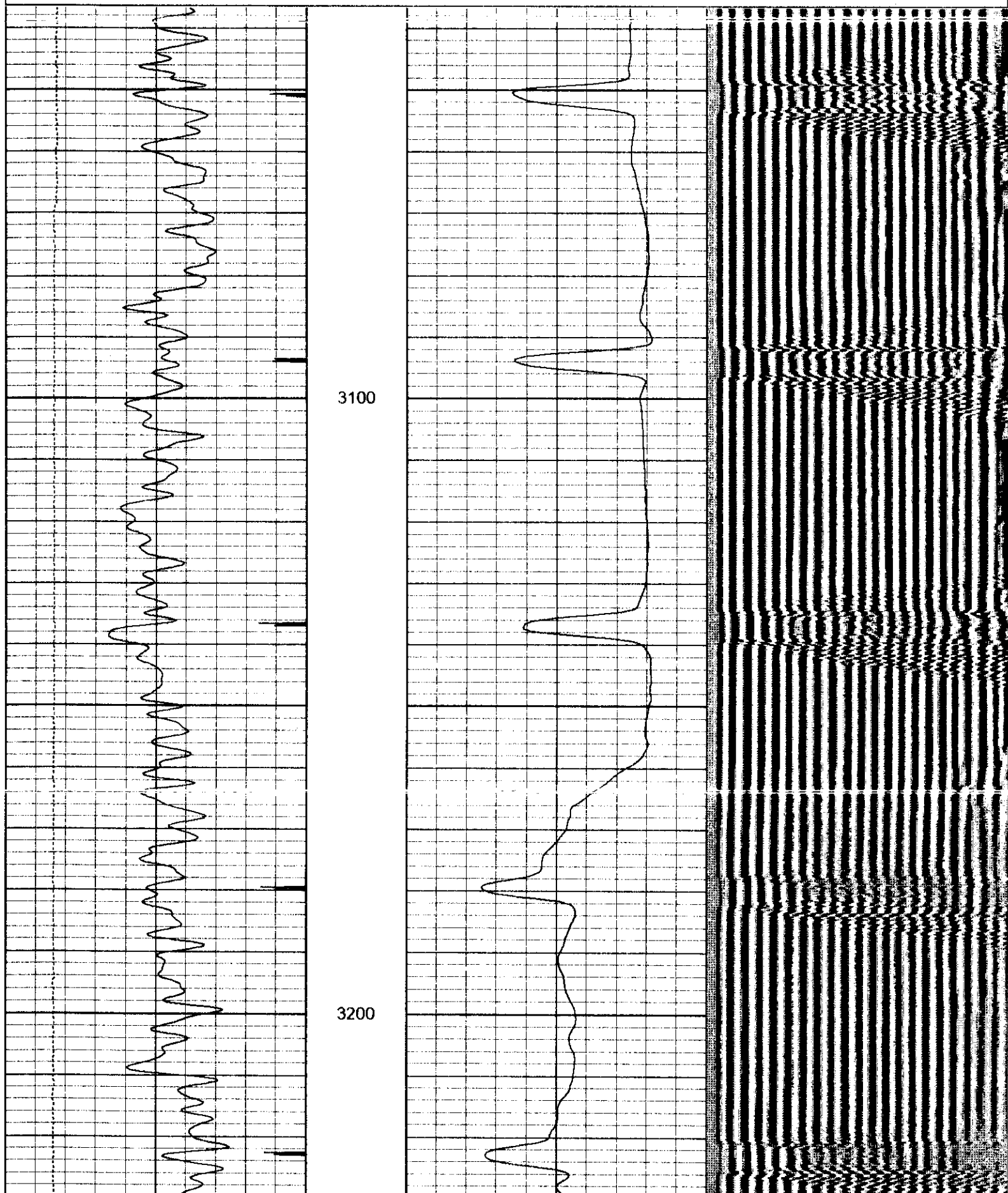
Comments

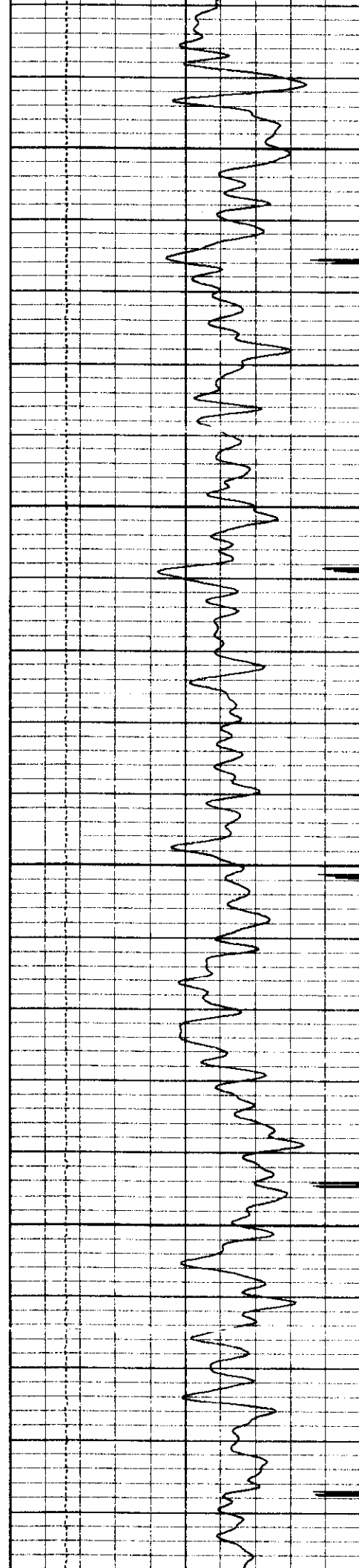
THANK-YOU FOR USING "NUEX" WIRELINE SERVICES INC. !!!
970.526.1084 FAX:970.526.1085

```
Database File:      pdcs124.db
Dataset Pathname:  pass2
Presentation Format: cbl_dr
Dataset Creation:   Fri Sep 05 00:34:13 2003 by Log-G2-P4
```

9	Collar Locator	0
30	Gamma Ray (GAPI)	130
30	Line Speed (ft/min)	230

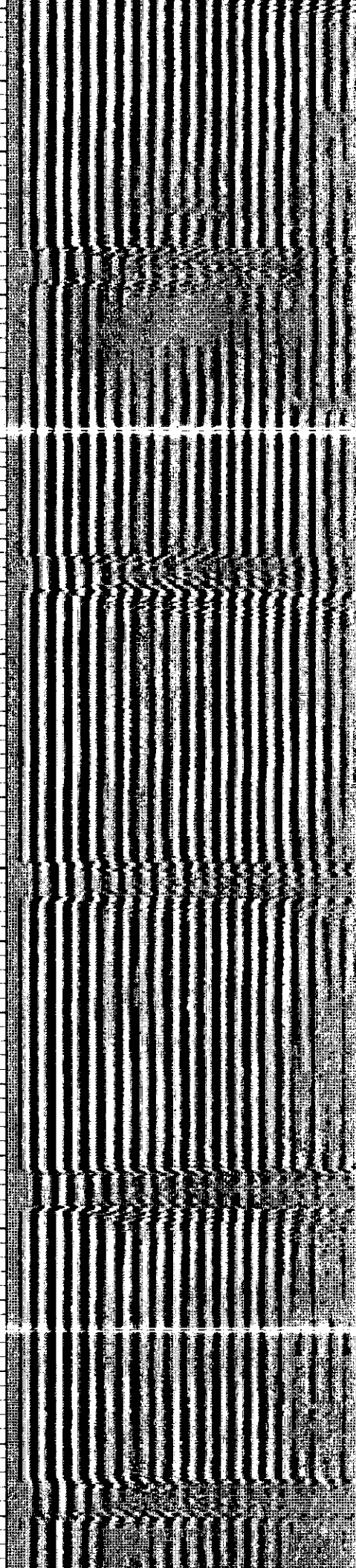
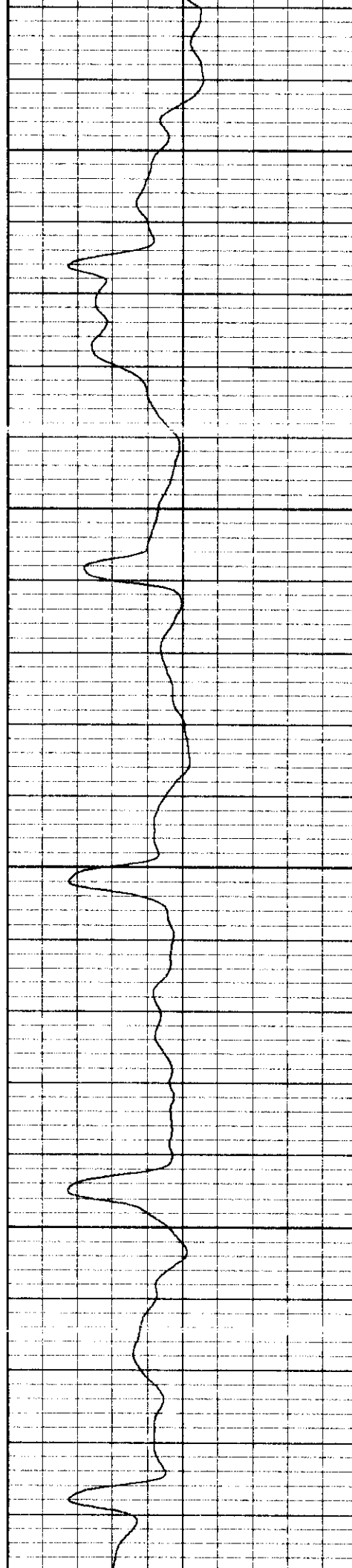
0	Amplified Amplitude (mV)	10	300	Variable Density	1200
0	Amplitude (mV)	100			

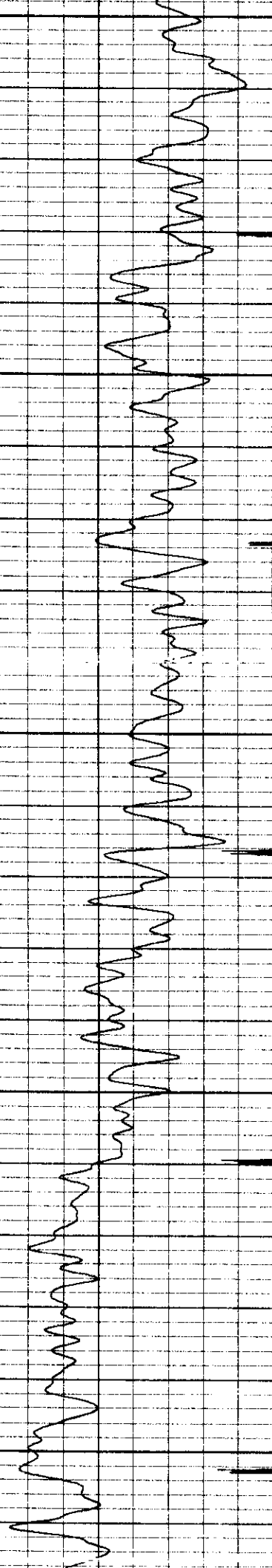




3300

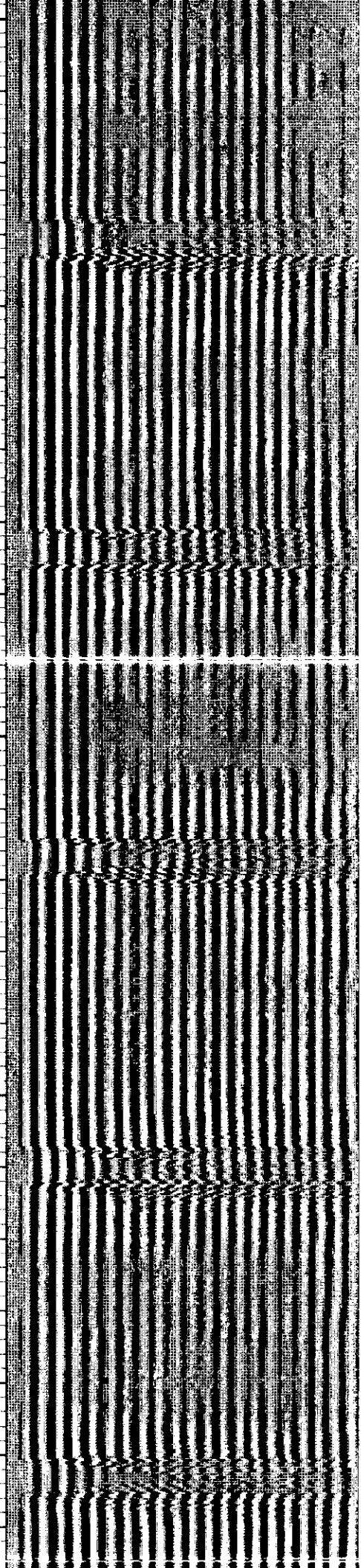
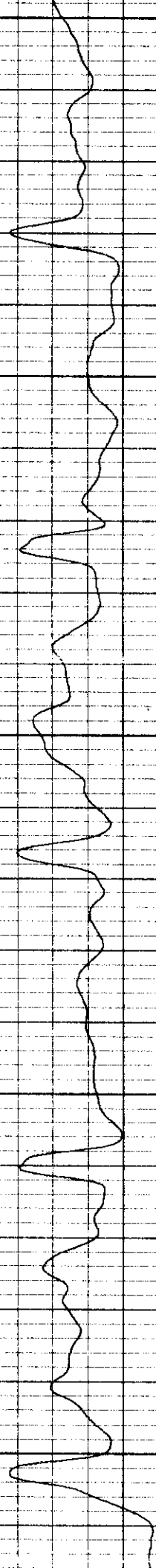
3400

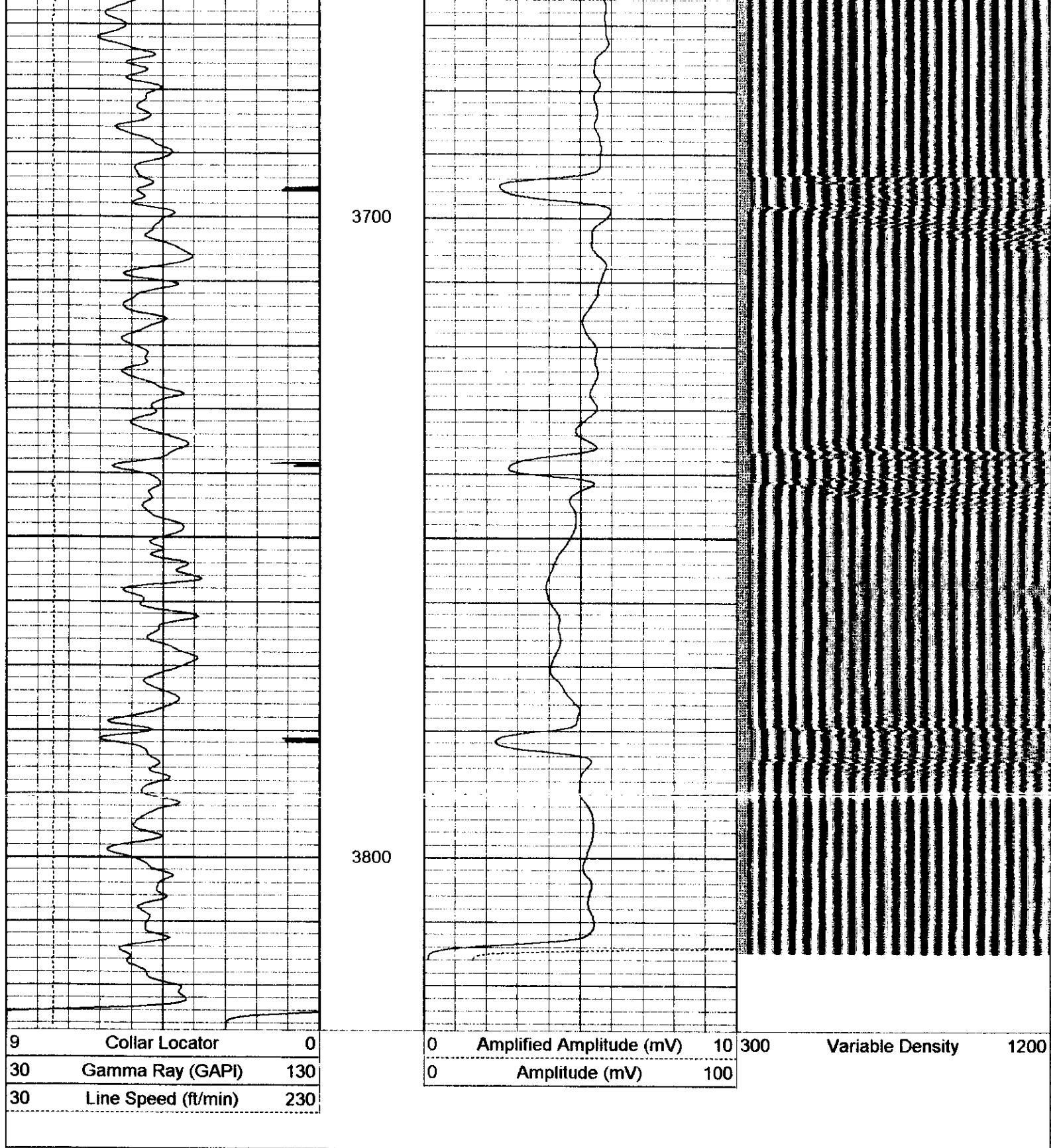




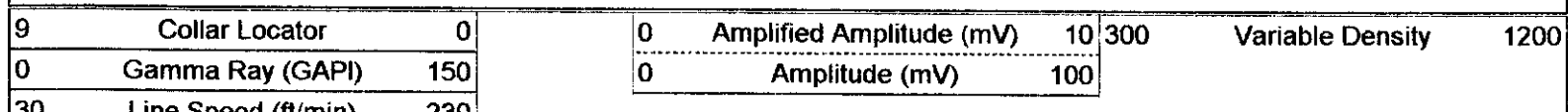
3500

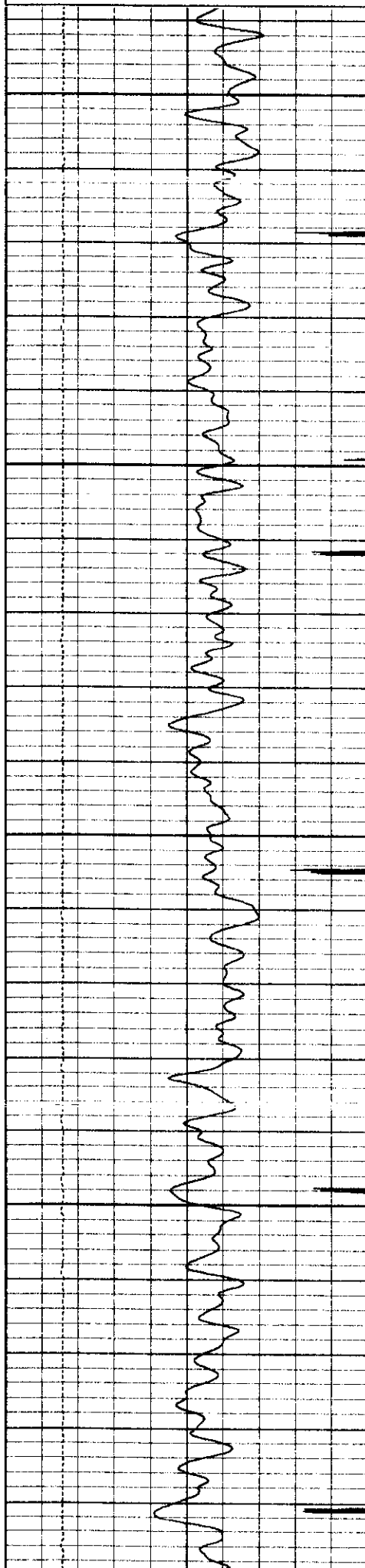
3600





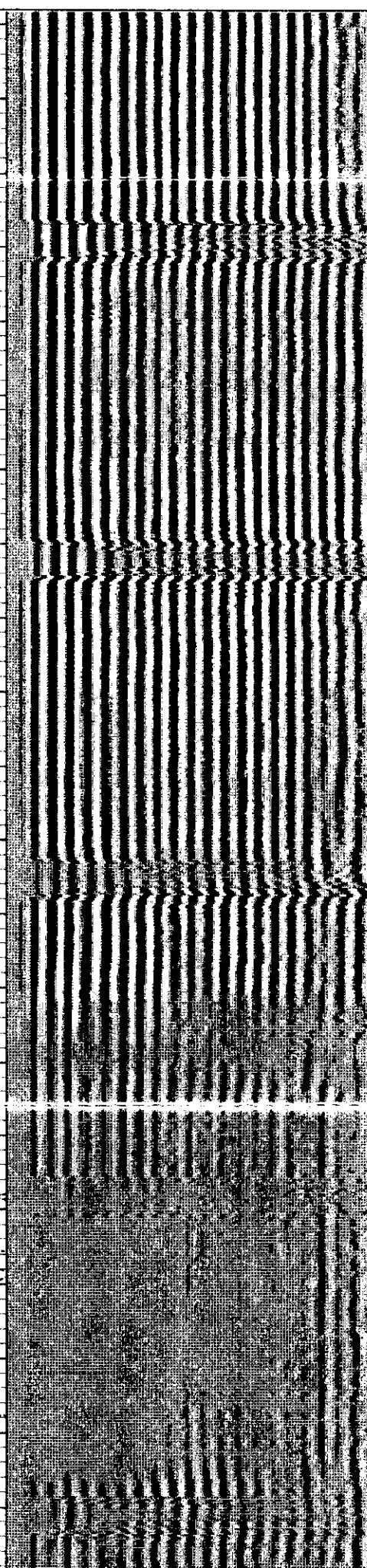
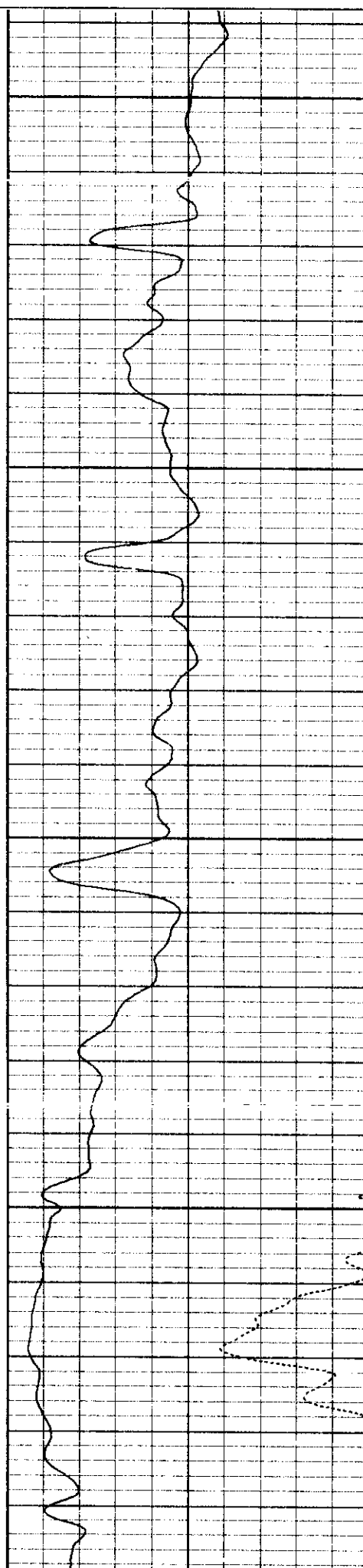
Database File: pdcs124.db
 Dataset Pathname: pass1.1
 Presentation Format: cbl_dr
 Dataset Creation: Fri Sep 05 08:47:26 2003 by Calc 6.2_B4
 Charted by: Depth in Feet scaled 1:240

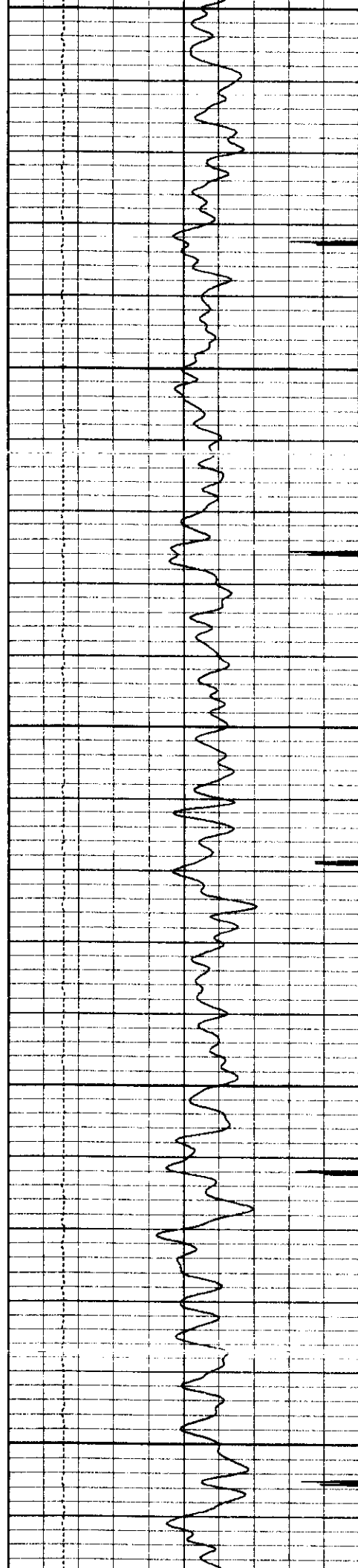




6000

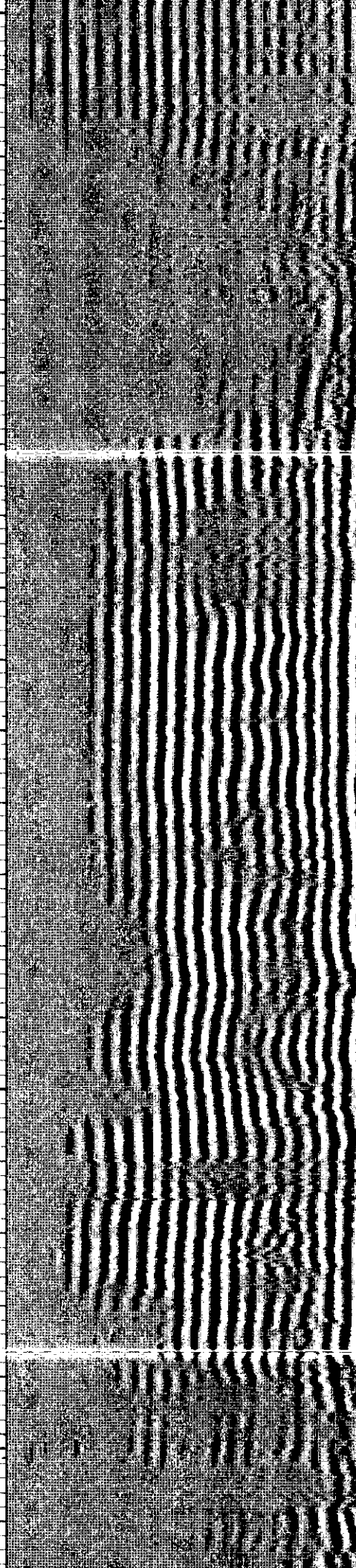
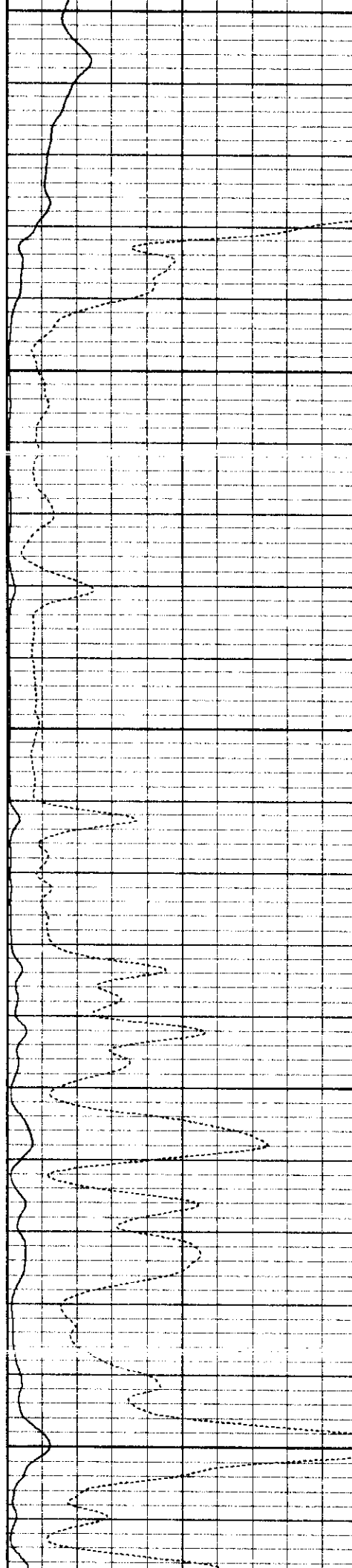
6100

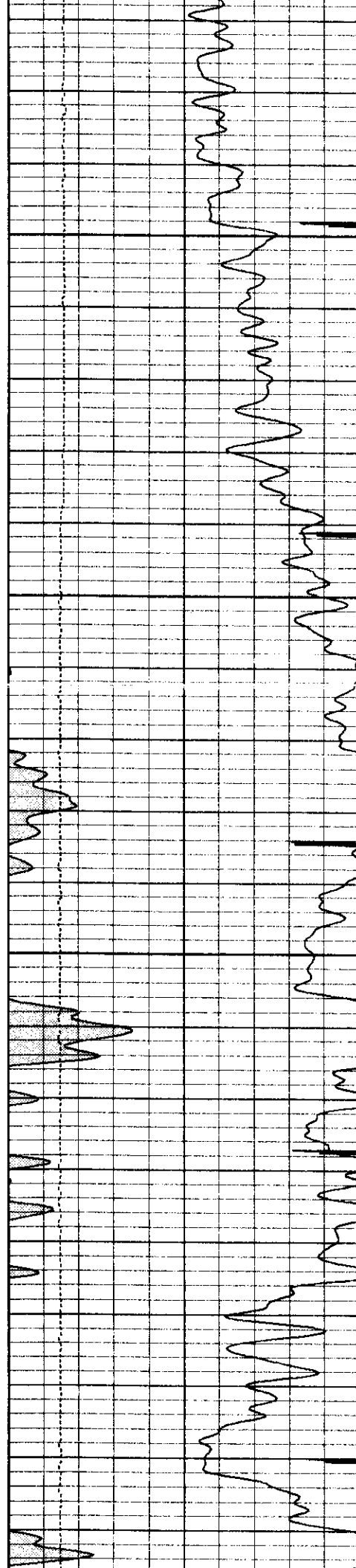




6200

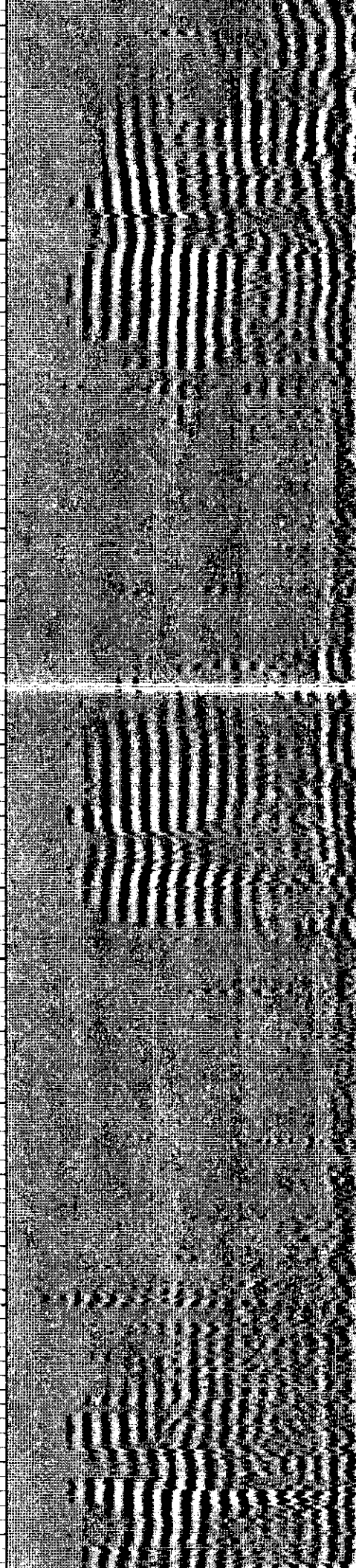
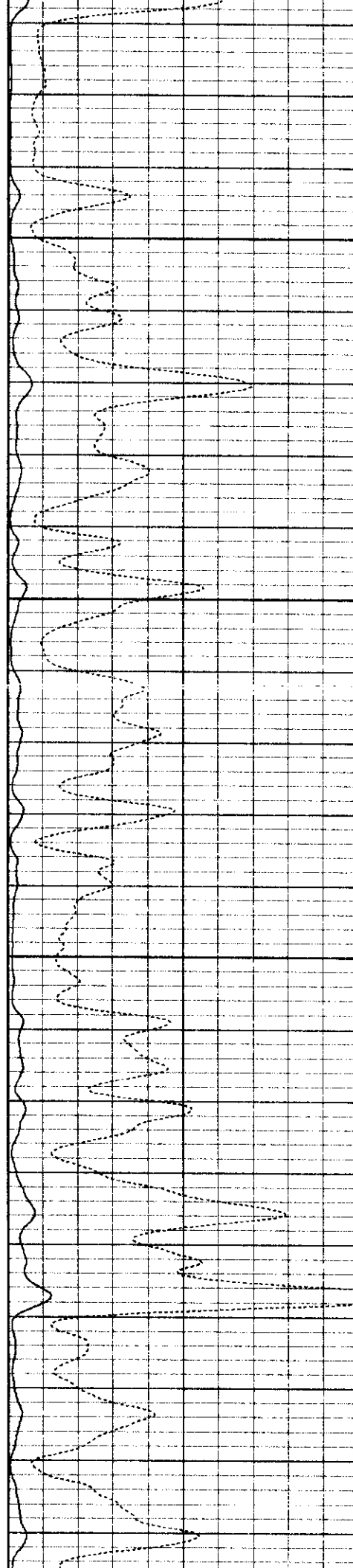
6300

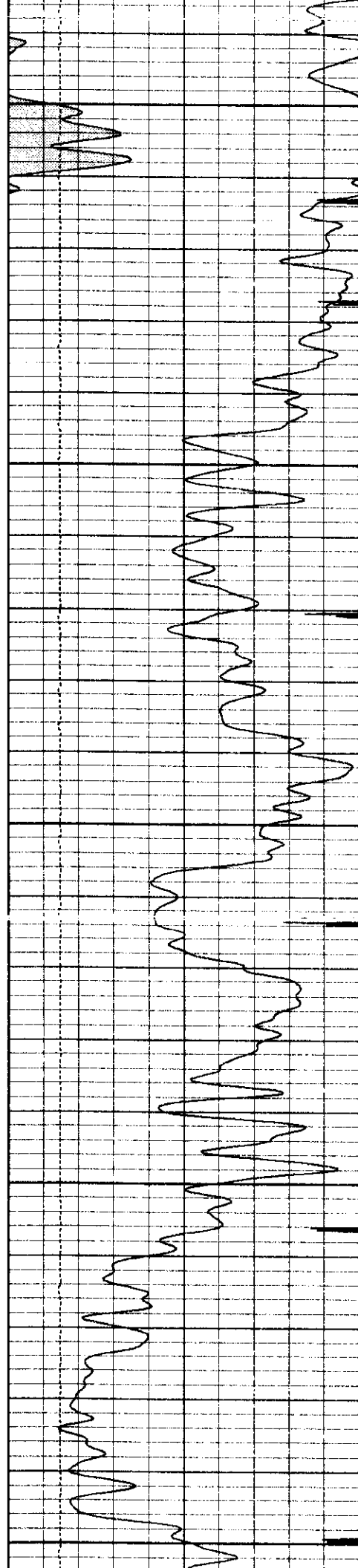




6400

6500



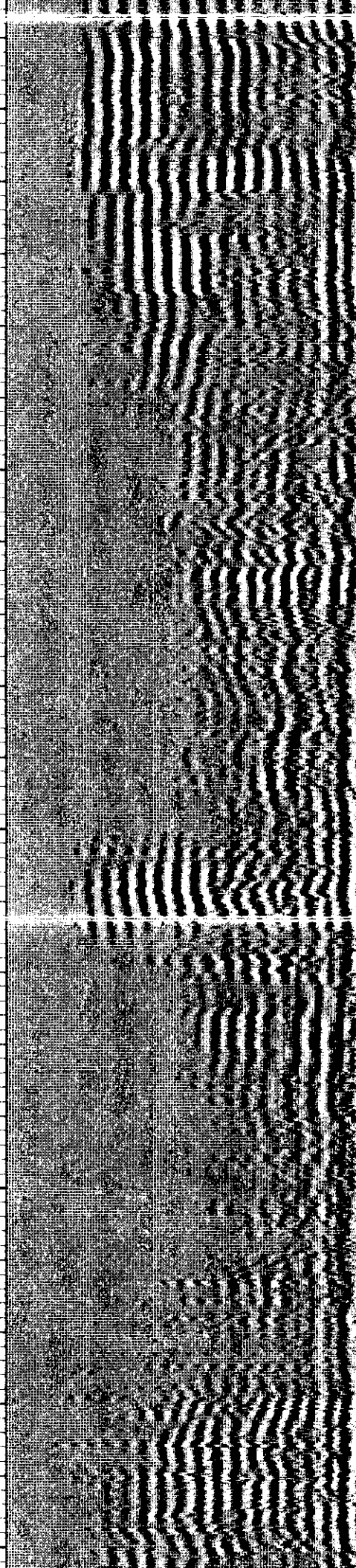
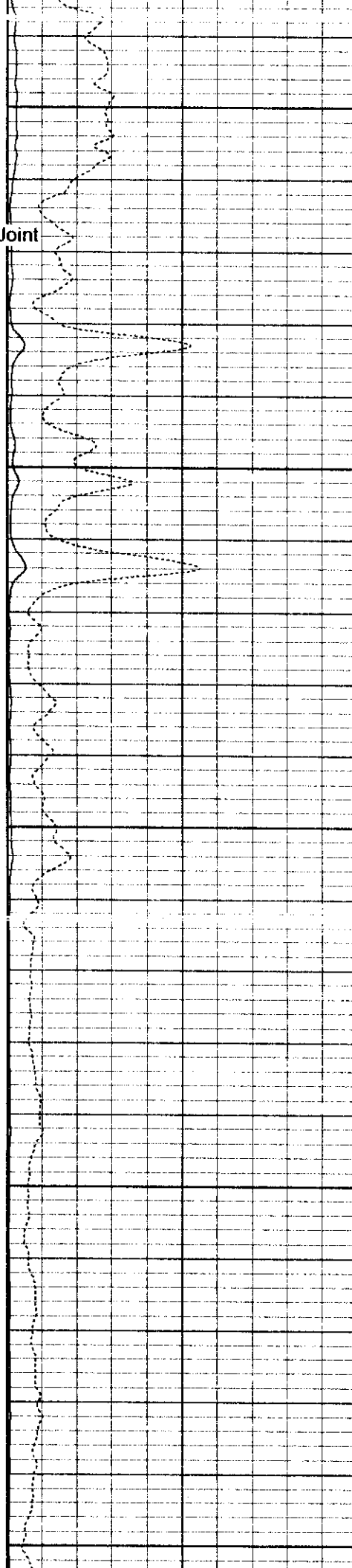


6600

← Flag Joint

6700

6800



Cement Bond Log Calibration Report

Serial Number: TEKCO-01
 Tool Model: TEKCO-1x2
 Performed: Fri Sep 05 07:44:33 2003

Depth: 2946.72 ft
 Casing Diameter: 4.5 in

3' Spacing

5' Spacing

Signal Zero:	0	0	mV
Calibrated Amplitude:	81.1961	81.1961	mV
Reading at Signal Zero:	-0.03	-0.0226074	V
Reading in Free Pipe:	1.51392	1.67549	V

Gain:	52.591	47.816
Offset:	1.57773	1.08099