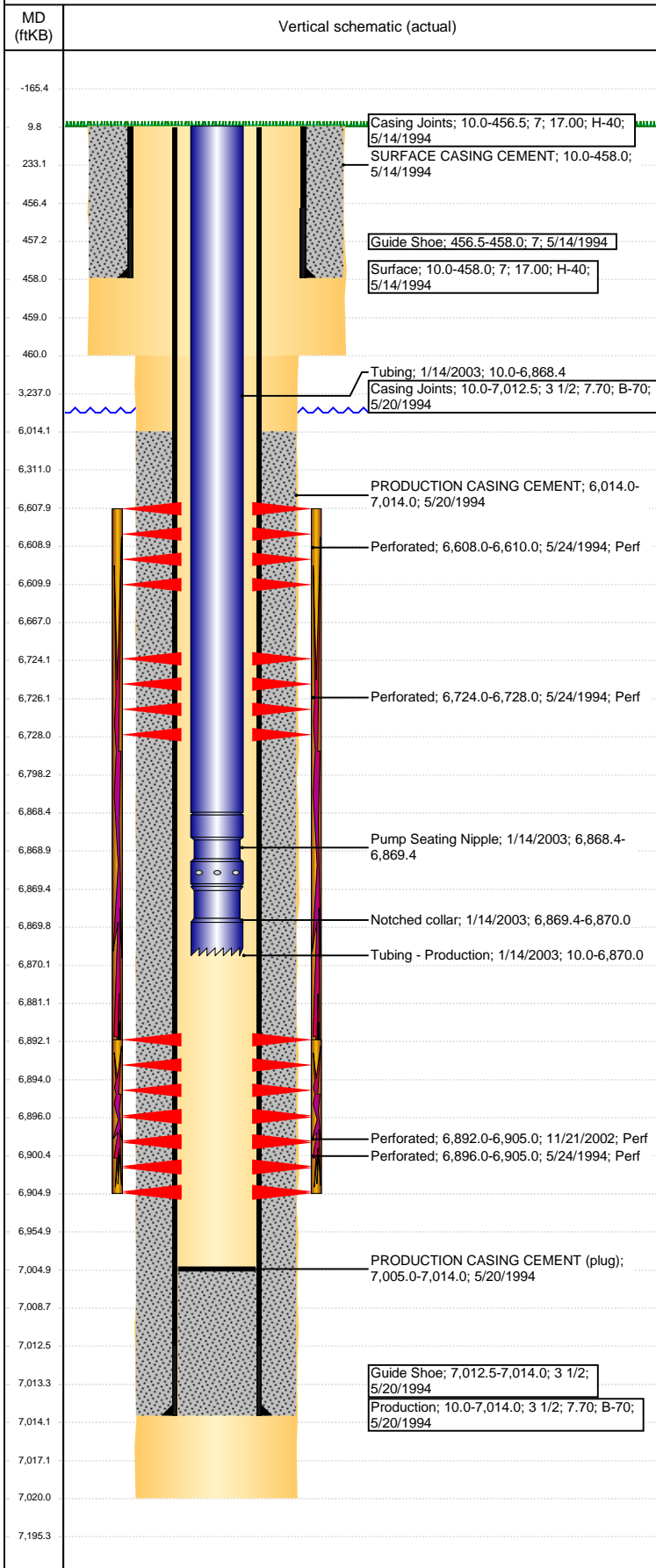


Well Name: DPG BIRD FARM 12-01H5

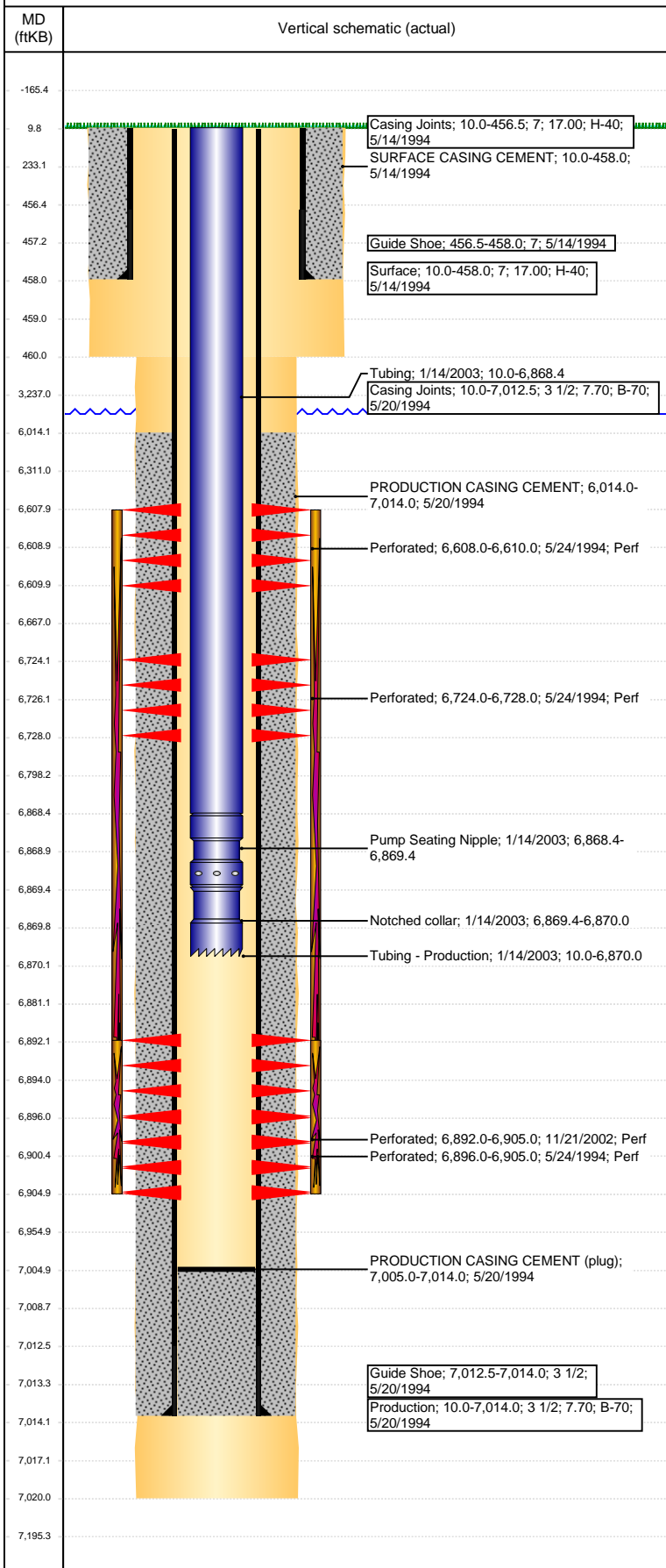
VERTICAL - ORIGINAL HOLE, 3/21/2017 2:25:08 PM



Well Header						
API 05-123-18251		Business Unit DJ BASIN		District 15		Well Config VERTICAL
Original KB Elevation (ft) 4,612		KB - GL / MSL (ftKB) 10.00		Spud Date 5/13/1994		P & A Date
Comment						
Directions To Well						
Congressional Location						
Quarter 3 NE	Quarter 4 NE	Section 12	Township 5	Twntshp N/S Dir N	Range 65	Range E/W Dir W
Bottom Hole Location						
North-South Distance (ft)		From N or S Line		East-West Distance (ft)		From E or W Line
Plug Back Total Depths						
Date	Depth (ftKB)	Method		Com		
5/20/1994	7,005.0	CASING TALLY		GUIDE SHOE		
1/14/2003	7,005.0	TAG		C/O W/222 JTS		
Wellbore Sections						
Section Des		Size (in)		Act Top, MD (ftKB)		Act Btm, MD (ftKB)
SURFACE		9 7/8		10		460
PRODUCTION		6 1/4		460		7,020
Zone Statuses						
Zone Name	Status Date	Status	Fluid Type	Job	Prod Method	
CODELL	6/21/1994	PR	Oil	DRILLING/CO...		
CODELL	12/19/2002	PR	Oil	RE-FRAC, 11/2...		
NIOBRARA-C...	6/21/1994	PR	Oil	DRILLING/CO...		
NIOBRARA	6/21/1994	PR	Oil	DRILLING/CO...		
Casing Strings						
Surface, 458.0ftKB						
Casing Description Surface		Run Date 5/14/1994	OD (in) 7	Wt/Len (l... 17.00	Grade H-40	Top, MD (ft... 10.0
						MD (ftKB) 458.0
Production, 7,014.0ftKB						
Casing Description Production		Run Date 5/20/1994	OD (in) 3 1/2	Wt/Len (l... 7.70	Grade B-70	Top, MD (ft... 10.0
						MD (ftKB) 7,014.0
Cement						
Description SURFACE CASING CEMENT				Top Depth (ftKB) 10.0		Bottom Depth (ftKB) 458.0
Description PRODUCTION CASING CEMENT				Top Depth (ftKB) 6,014.0		Bottom Depth (ftKB) 7,014.0
Tubing Strings						
Tubing Description Tubing - Production		Run Date 1/14/2003	String... 2 1/16	ID (in) 1.75	Wt (lb/ft) 3.25	Grade J-55
						Len (ft) 6,860.00
						Set De...
Tubing Components						
Item Des	OD (in)	Wt (lb/ft)	Grade	Jts	Len (ft)	Btm (ftKB)
Tubing	2 1/16	3.25	J-55	217	6,858.40	6,868.4
Pump Seating Nipple	2 1/16			1	1.00	6,869.4
Notched collar	2 1/16			1	0.60	6,870.0
Other In Hole						
Run Date	Des			OD (in)	Top (ftKB)	Btm (ftKB)
Logs						
Date	Type				Top, MD (ftKB)	Btm, MD (ftKB)
5/24/1994	GAMMA RAY				6,450.0	6,975.0
5/24/1994	INDUCTION				458.0	7,014.0
Perforation Data						
Linked Zone	Bnch/St g	Sum of Entered Shot Total	Top (ftKB)	Btm (ftKB)	Date	
NIOBRARA, ORIGINAL HOLE	A	2	6,608.00	6,610.00	5/24/1994	
NIOBRARA, ORIGINAL HOLE	B	4	6,724.00	6,728.00	5/24/1994	
CODELL, ORIGINAL HOLE		52	6,892.00	6,905.00	11/21/2002	
CODELL, ORIGINAL HOLE		9	6,896.00	6,905.00	5/24/1994	

Well Name: DPG BIRD FARM 12-01H5

VERTICAL - ORIGINAL HOLE, 3/21/2017 2:25:11 PM



Perforation Data					
Linked Zone	Bnch/St g	Sum of Entered Shot Total	Top (ftKB)	Btm (ftKB)	Date
Total (Sum)		67			
Stimulation Intervals					
Start Date 5/25/1994		Primary Job Type DRILLING/COMPLETION - ORIGINAL			
Technical Result		Tech Result Details		Tech Result Note	
Comment FRAC'D VIA LTD ENTRY					
Start Date 12/18/2002		Primary Job Type RE-FRAC			
Technical Result		Tech Result Details		Tech Result Note	
Comment Weatherford AS1X pkr set @ 6818' KB, tested to 1500 psi					