

**NOBLE ENERGY INC.**  
 UPV 05-06H3  
 SENW 5-5N-63W  
 1987 FNL & 1966 FWL  
 WELD COUNTY, CO  
 Wattenberg  
**CURRENT WELLBORE SCHEMATIC**  
 with PROPOSED P&A  
 2/7/2017

API: 05-123-18861

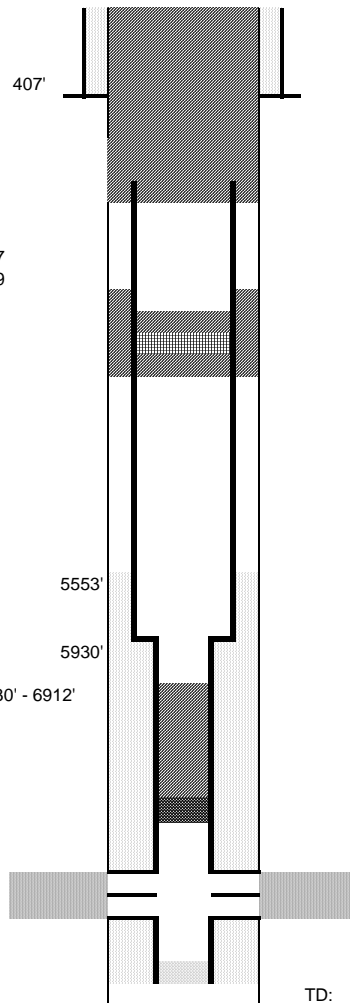
KB Elev: 4703'  
 GL Elev: 4692'

Spud Date: 2/5/1995

**Surface Casing :**  
 7", 17#, H-40 @ 407'  
 Cement: 200 sx  
 TOC: Surface

<b>WW</b>	N/A	
<b>SC</b>	407	607
<b>FH</b>	379	579

**Production Casing :**  
 3 1/2", 7.7#, N-80 @ 5930' + 2 7/8", 6.4# @ 5930' - 6912'  
 Cement: 152 sx  
 TD: 6974'



Cut surface casing off 6'-8' below surface.

Cut production casing @ 607'  
 Cmt job 1: 115 sx 607'-307'  
 Cmt job 2: 65 sx to surface

Pump 225 sx through/on top of CIBP.  
 Cmt Coverage inside PC: 2180'  
 Cmt Coverage outside PC: 2000'  
 Set CIBP @ 2,400'  
 Perforate csg @ 2,500'

Pump 12 sx cement from 6710' (CIBP) to 6272' for Niobrara coverage.  
 CIBP @ 6710'

Codell Perforations: 6760' - 6780'

TD: 6974'