

HALLIBURTON

iCem[®] Service

TEP ROCKY MOUNTAIN LLC

For: Terra

Date: Wednesday, January 18, 2017

RU 24-7 Production

API #05-045-23261-00

Sincerely,

Grand Junction Cement Engineering

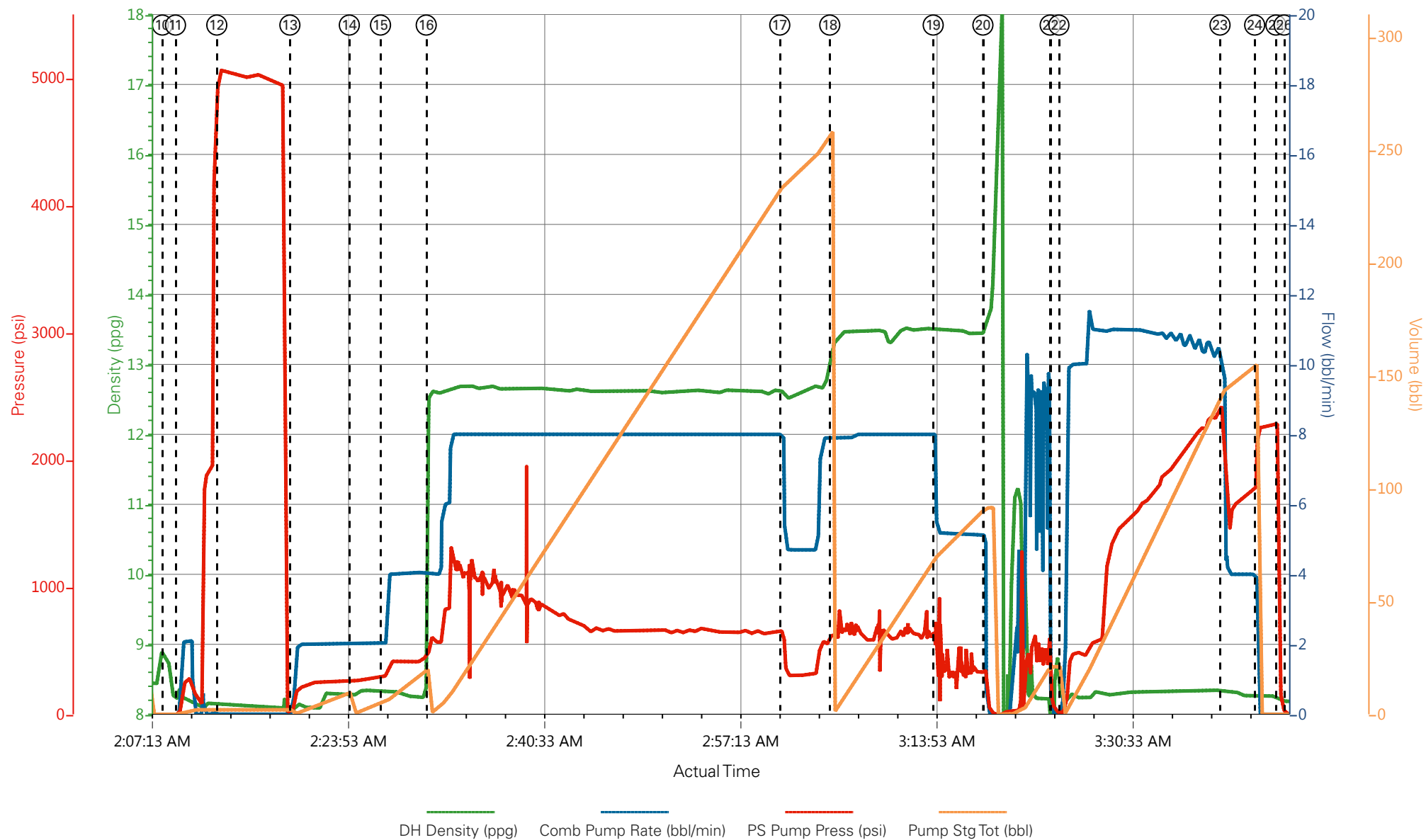
1.0 Real-Time Job Summary

1.1 Job Event Log

Type	Seq. No.	Graph Label	Date	Time	Source	DH Density (ppg)	Comb Pump Rate (bbl/min)	PS Pump Press (psi)	Pump Stg Tot (bbl)	Comments
Event	1	Call Out	1/17/2017	15:00:00	USER					REQUESTED ON LOCATION @ 22:00
Event	2	Pre-Convoy Safety Meeting	1/17/2017	16:45:00	USER					ALL HES PRESENT
Event	3	Crew Leave Yard	1/17/2017	17:00:00	USER					1 660 BULK TRUCK, THE REST OF CREW IN FIELD
Event	4	Arrive At Loc	1/17/2017	22:10:00	USER					RIG RUNNING CASING
Event	5	Assessment Of Location Safety Meeting	1/17/2017	22:30:00	USER					MET WITH COMP REP, AND WENT OVER NUMBERS AND JOB PROCEDURE. WALKED AROUND LOCATION AND COLLECTED WATER SAMPLE (PH- 7.0, CHLORIDES- 0, TEMP- 70 F). COMP REP WAS OFFERED SDS FOR ALL CHEMICLES USED BY HES.
Event	6	Other	1/17/2017	23:00:00	USER					RIGGED UP PLUG CONTAINER FOR RIG TO CIRCULATE.
Event	7	Spot Equipment	1/17/2017	23:15:00	USER					1 HT 400 PUMP TRUCK E1, 1 660 BULK TRUCK, 1 550 SERVICE PICKUP
Event	8	Pre-Rig Up Safety Meeting	1/17/2017	23:40:00	USER					ALL HES PRESENT
Event	9	Pre-Job Safety Meeting	1/18/2017	01:40:00	USER					ALL HES EMPLOYEES AND RIG CREW PRESENT, RIG CIRCULATED FOR 3 HRS @ 13 BPM PRIOR TO JOB PRESSURE @ 1200 PSI
Event	10	Start Job	1/18/2017	02:08:22	USER					.TD 10,042', TP 10,000', SJ 27.75', SURFACE CSG 9 5/8" 32.3# H-40 SET @ 1140' PRODUCTION CSG 4 1/2" 11.6# P-110, OH 8 3/4", MUD 10.1 PPG
Event	11	Prime Lines	1/18/2017	02:09:28	USER	8.33	2.0	310	2	FRESH WATER
Event	12	Test Lines	1/18/2017	02:12:59	COM5			5053		PRESSURE HELD
Event	13	Pump H2O Spacer	1/18/2017	02:19:12	COM5	8.33	2.0	236	10	FRESH WATER
Event	14	Pump Mud Flush III	1/18/2017	02:24:15	COM5	8.4	4.0	420	20	20 BBL MUD FLUSH III 80 LBS MUD FLUSH

Event	15	Check weight	1/18/2017	02:26:54	COM5					WEIGHT VERIFIED VIA PRESSUREIZED MUD SCALES
Event	16	Pump Lead Cement	1/18/2017	02:30:47	COM5	12.5	8.0	1188	263	760 SKS NEOCEM CMT 12.5 PPG, 1.94 FT3/SK, 9.623 GAL/SK. USED 45 LBS. OF TUF-FIBER THROUGHOUT LEAD CMT
Event	17	Slow Rate	1/18/2017	03:00:49	USER					SLOWED TO END SILO
Event	18	Pump Tail Cement	1/18/2017	03:05:04	COM5	13.3	8.0	650	82	265 SKS THERMACEM CMT 13.3 PPG, 1.73 FT3/SK, 7.799 GAL/SK
Event	19	Slow Rate	1/18/2017	03:13:51	USER					SLOWED TO END CMT
Event	20	Shutdown	1/18/2017	03:18:04	COM5					END OF CMT
Event	21	Drop Top Plug	1/18/2017	03:23:47	USER					VERIFIED BY FLAG INDICATOR
Event	22	Pump Displacement	1/18/2017	03:24:32	COM5	8.33	11.0	2400	145	1 GAL MMCR IN FIRST 10 BBLS, 3 LBS BE-6 IN FIRST 30 BBLS, ONE 50 LB. BAG KCL THROUGHOUT DISPLACEMENT
Event	23	Slow Rate	1/18/2017	03:38:13	USER	8.33	2.0	1670	10	SLOWED TO BUMP PLUG
Event	24	Bump Plug	1/18/2017	03:41:10	COM5	8.33	4.0	1750	155	BUMPED PLUG
Event	25	Check Floats	1/18/2017	03:42:58	USER			2290		FLOATS HELD 1.5 BBL FLOW BACK
Event	26	End Job	1/18/2017	03:43:40	USER					RETURNS THROUGH OUT JOB
Event	27	Post-Job Safety Meeting (Pre Rig-Down)	1/18/2017	04:00:00	USER					ALL HES PRESENT
Event	28	Pre-Convoy Safety Meeting	1/18/2017	06:45:00	USER					
Event	29	Crew Leave Location	1/18/2017	07:00:00	USER					THANK YOU FOR USING HALLIBURONT CMT, DUSTIN HYDE AND CREW

Terra Energy, Youberg RU 24-7, 4 1/2" Production



- | | | | | | |
|-----------------------------------------|-----------------------------|----------------------|--------------------|----------------------|-------------------------------------------|
| ① Call Out | ⑥ Other | ⑪ Prime Lines | ⑯ Pump Lead Cement | 21 Drop Top Plug | 26 End Job |
| ② Pre-Convoy Safety Meeting | ⑦ Spot Equipment | ⑫ Test Lines | ⑰ Slow Rate | 22 Pump Displacement | 27 Post-Job Safety Meeting (Pre Rig-Down) |
| ③ Crew Leave Yard | ⑧ Pre-Rig Up Safety Meeting | ⑬ Pump H2O Spacer | ⑱ Pump Tail Cement | 23 Slow Rate | 28 Pre-Convoy Safety Meeting |
| ④ Arrive At Loc | ⑨ Pre-Job Safety Meeting | ⑭ Pump Mud Flush III | ⑲ Slow Rate | 24 Bump Plug | 29 Crew Leave Location |
| ⑤ Assessment Of Location Safety Meeting | ⑩ Start Job | ⑮ Check weight | 20 Shutdown | 25 Check Floats | |

▼ **HALLIBURTON** | iCem® Service

Created: 2017-01-18 00:34:42, Version: 4.2.393

Edit

Customer: TEP ROCKY MOUNTAIN LLC

Job Date: 1/18/2017

Well: Youberg RU 24-7

Representative: BRANDON HAIRE

Sales Order #: 903779850

ELITE 1: HYDE / ANGELO

Terra Energy, Youberg RU 24-7, 4 1/2" Production

