

# SYNERGY RESOURCES CORPORATION

Location: COLORADO Slot: SLOT#11 GOETZEL 32C-30-M (2073FNL & 2446FEL, SEC.29)  
Field: WELD COUNTY (NAD83, TRUE NORTH) Well: GOETZEL 32C-30-M  
Facility: SEC.29-T06N-R66W Wellbore: GOETZEL 32C-30-M PWB

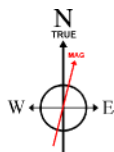
Plot reference wellpath is GOETZEL 32C-30-M PWP (REV-C.0)	Grid System: NAD83 / Lambert Colorado SP, Northern Zone (501), US feet
True vertical depths are referenced to PROPETRO 12 (4) (RKB)	* = Wellpath was transformed from a different geodetic datum
Measured depths are referenced to PROPETRO 12 (4) (RKB)	North Reference: True north
PROPETRO 12 (4) (RKB) to Mean Sea Level: 4732 feet	Scale: True distance
Mean Sea Level to Mud line (At Slot: SLOT#11 GOETZEL 32C-30-M (2073FNL & 2446FEL, SEC.29)): 0 feet	Depths are in feet
Coordinates are in feet referenced to Slot:	Created by: wagnjam on 2017-02-24
	Database: WA_DEN_Denver_Defn

## Location Information

Facility Name			Grid East (US ft)	Grid North (US ft)	Latitude	Longitude
SEC.29-T06N-R66W			3194449.646	1411672.008	40°27'40.817"N	104°48'04.259"W
Slot	Local N (ft)	Local E (ft)	Grid East (US ft)	Grid North (US ft)	Latitude	Longitude
SLOT#11 GOETZEL 32C-30-M (2073FNL & 2446FEL, SEC.29)	-260.18	-1.39	3194450.305	1411411.832	40°27'38.246"N	104°48'04.277"W
PROPETRO 12 (4) (RKB) to Mud line (At Slot: SLOT#11 GOETZEL 32C-30-M (2073FNL & 2446FEL, SEC.29))					4732ft	
Mean Sea Level to Mud line (At Slot: SLOT#11 GOETZEL 32C-30-M (2073FNL & 2446FEL, SEC.29))					0ft	
PROPETRO 12 (4) (RKB) to Mean Sea Level					4732ft	

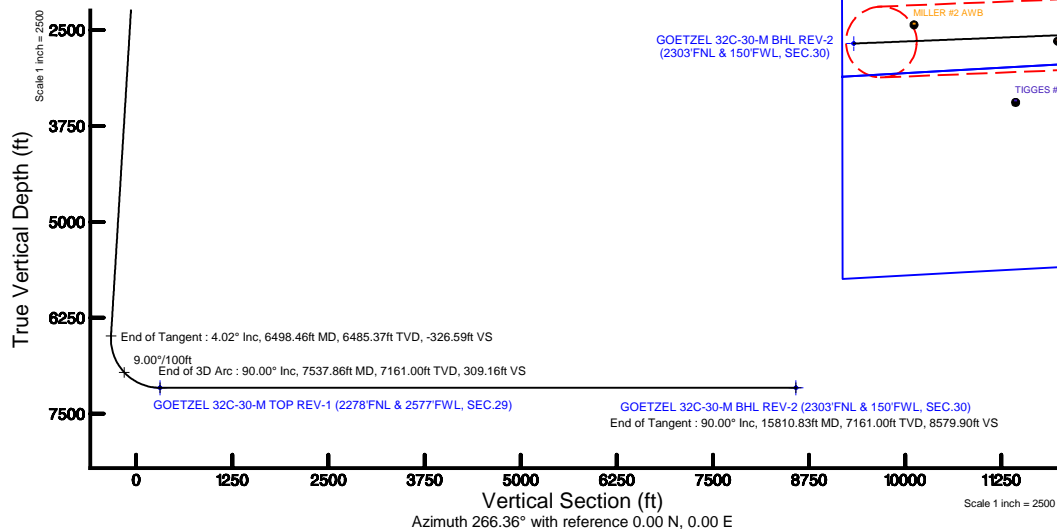
## Tie-On Position

MD (ft)	Inc (°)	Az (°)	TVD (ft)	Local N (ft)	Local E (ft)	Grid East (US ft)	Grid North (US ft)	Latitude	Longitude
4.00	0.000	115.810	4.00	0.00	0.00	3194450.31	1411411.83	40°27'38.246"N	104°48'04.277"W



BGGM (1900.0 to 2018.0) Dip: 66.92° Field: 52499.6 nT  
Magnetic North is 8.43 degrees East of True North (at 2/22/2017)

To correct azimuth from Magnetic to True add 8.43 degrees



## Well Profile Data

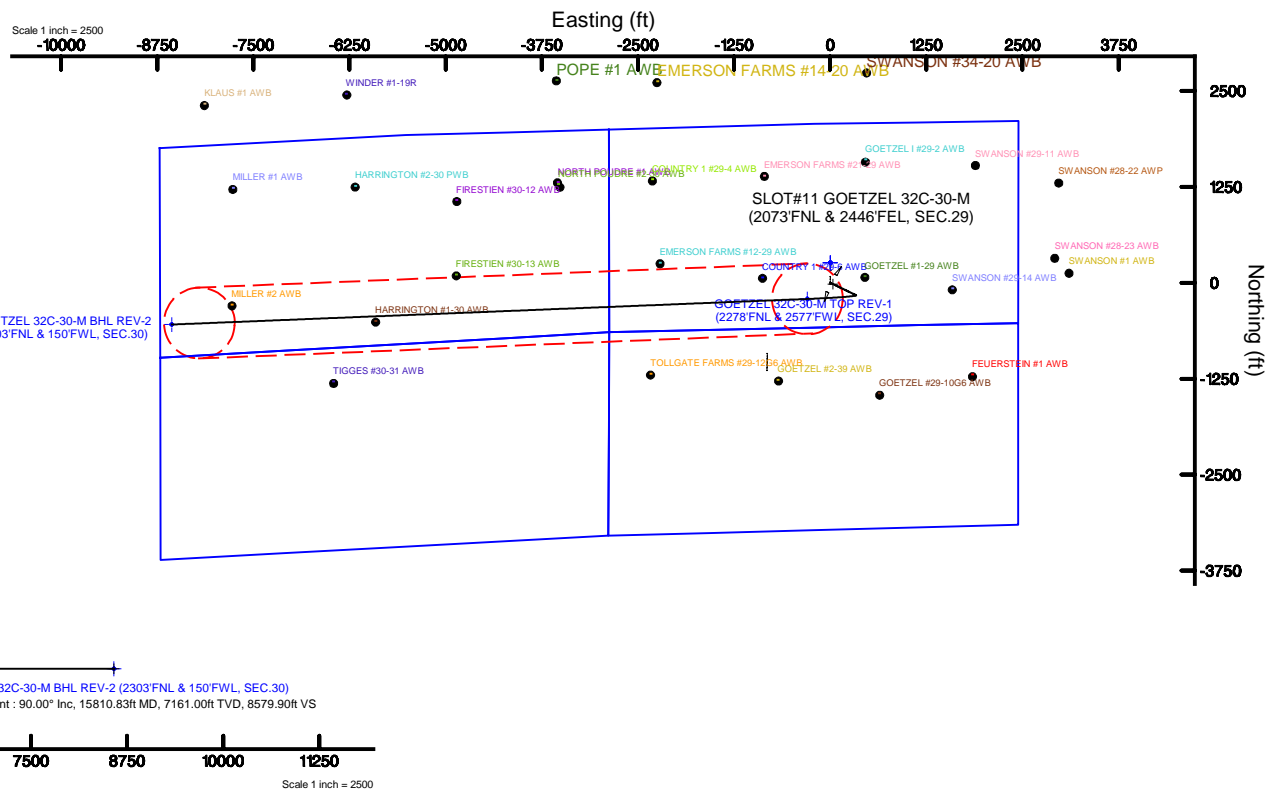
Design Comment	MD (ft)	Inc (°)	Az (°)	TVD (ft)	Local N (ft)	Local E (ft)	DLS (°/100ft)	VS (ft)
Tie On	4.00	0.000	115.810	4.00	0.00	0.00	0.00	0.00
End of Tangent	1050.00	0.000	115.810	1050.00	0.00	0.00	0.00	0.00
End of Build	1251.07	4.021	115.810	1250.91	-3.07	6.35	2.00	-6.14
End of Tangent	6498.46	4.021	115.810	6485.37	-163.29	337.64	0.00	-326.59
End of 3D Arc	7537.86	90.000	267.691	7161.00	-211.26	-296.35	9.00	309.16
End of Tangent	15810.83	90.000	267.691	7161.00	-544.58	-8562.60	0.00	8579.90

## Survey Program

Start MD (ft)	End MD (ft)	Tool	Model	Log Name/Comment	Wellbore
4.00	1700.00	BHI NavTrak	Custom BHI NavTrak (Standard Rotating) (Rockies 0.03Gt model)		GOETZEL 32C-30-M PWB
1700.00	15811.00	BHI AutoTrak Curve	Custom BHI AutoTrak Curve (IFR1, Short) (Rockies 0.03Gt model)		GOETZEL 32C-30-M PWB

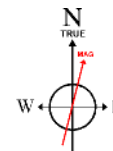
## Targets

Name	MD (ft)	TVD (ft)	Local N (ft)	Local E (ft)	Grid East (US ft)	Grid North (US ft)	Latitude	Longitude
SEC.29-T06N-R66W NORTHERN	-16.00	260.16	1.41	3194449.66	1411671.99	40°27'40.817"N	104°48'04.259"W	
SEC.29-T06N-R66W SOUTHERN	-16.00	260.16	1.41	3194449.66	1411671.99	40°27'40.817"N	104°48'04.259"W	
SEC.30-T06N-R66W NORTHERN	-16.00	260.16	1.41	3194449.66	1411671.99	40°27'40.817"N	104°48'04.259"W	
SEC.30-T06N-R66W SOUTHERN	-16.00	260.16	1.41	3194449.66	1411671.99	40°27'40.817"N	104°48'04.259"W	
GOETZEL 32C-30-M BHL REV-1 (2303FNL & 150FWL, SEC.30)	7161.00	-525.40	-8202.50	3196252.51	1410821.83	40°27'33.041"N	104°49'50.380"W	
GOETZEL 32C-30-M BHL REV-2 (2303FNL & 150FWL, SEC.30)	15810.83	7161.00	-544.58	-8562.60	3195892.59	1410799.81	40°27'32.850"N	104°49'55.049"W
GOETZEL 32C-30-M TOP REV-1 (2278FNL & 2577FWL, SEC.29)	7537.86	7161.00	-211.26	-296.35	3194165.64	1411198.25	40°27'36.198"N	104°48'08.111"W



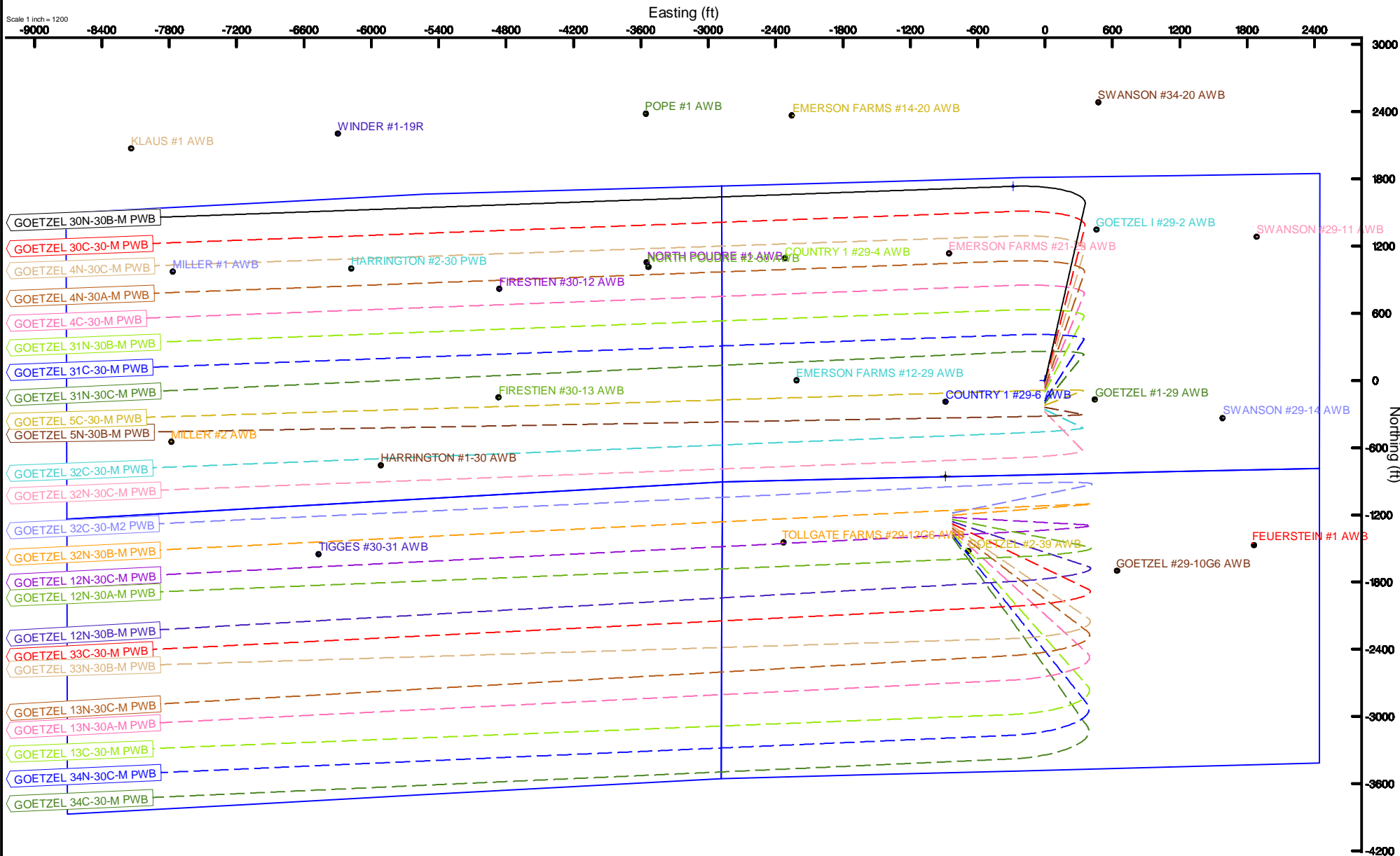
# SYNERGY RESOURCES CORPORATION

Location: COLORADO Slot: SLOT#01 GOETZEL 30N-30B-M (1813'FNL & 2445'FEL, SEC.29)  
Field: WELD COUNTY (NAD83,TRUE NORTH) Well: GOETZEL 30N-30B-M  
Facility: SEC.29-T06N-R66W Wellbore: GOETZEL 30N-30B-M-PWB



BGGM (1900.0 to 2018.0) Dip: 66.92° Field: 52499.6 nT  
Magnetic North is 8.43 degrees East of True North (at 2/22/2017)

To correct azimuth from Magnetic to True add 8.43 degrees



GOETZEL\_32C-30-M\_PWP\_\_REV-C.0\_.las

~VERSION INFORMATION

VERS. 2.0 : CWLS LOG ASCII STANDARD-VERSION 2.0  
 WRAP. NO : ASCII DATA SECTION CONTAINS ONE ROW PER WELLPATH STATION

~WELL INFORMATION

#MNEM	.UNITS	DATA	:DESCRIPTION
#----	.-----	----	:-----
STRT	.ft	0.00	:START MD
STOP	.ft	15810.83	:STOP MD
STEP	.ft	0.0	:STEP (non-uniform increment)
NULL	.	-999.99	:NULL
COMP	.	SYNERGY RESOURCES CORPORATION	:OPERATOR
WELL	.	GOETZEL 32C-30-M	:WELL
FLD	.	WELD COUNTY (NAD83,TRUE NORTH)	:FIELD
LOC	.	COLORADO	:AREA (aka: Location)
CNTY	.	N/A	:COUNTY
STAT	.	N/A	:STATE
CTRY	.	N/A	:COUNTRY
SRVC	.	Baker Hughes	:CONTRACTOR
DATE	.	11/10/2016	:LOG REV DATE
API	.		:API NUMBER

~OTHER INFORMATION

#Software: wellArchitect(R) Version 5.0

#MNEM	.UNITS	DATA	:DESCRIPTION
#----	.-----	----	:-----
WPTYPE	.	PLANNED WELLPATH	:WELLPATH TYPE
FACILITY	.	SEC.29-T06N-R66W	:FACILITY
SLOT	.	SLOT#11 GOETZEL 32C-30-M (2073'FNL & 2446'FEL, SEC.29)	:SLOT
WELLBORE	.	GOETZEL 32C-30-M PWB	:WELLBORE
WELLPATH	.	GOETZEL 32C-30-M PWP (REV-C.0)	:WELLPATH
MDREFPT	.	PROPETRO 12 (4') (RKB)	:MD REFERENCE POINT
TVDREFPT	.	PROPETRO 12 (4') (RKB)	:TVD REFERENCE POINT
LCLREFPT	.	Slot	:LOCAL COORDINATE REFERENCE PT
VSAZIMUTH.deg		266.36	:VERTICAL SECTION AZIMUTH
VSORIGN .ft		0.00	:VERTICAL SECTION ORIGIN NORTH
VSORIGE .ft		0.00	:VERTICAL SECTION ORIGIN EAST

~CURVE (WELLPATH) INFORMATION

#MNEM	.UNITS	:DESCRIPTION
#----	.-----	:-----
DEPT	.ft	:MEASURED DEPTH
INC	.deg	:INCLINATION
AZI	.deg	:AZIMUTH

GOETZEL\_32C-30-M\_PWP\_\_REV-C.0\_.las

TVD .ft :TRUE VERTICAL DEPTH  
 SECT .ft :CROSS SECTION (CURTAIN/VERTICAL)  
 LOCALN .ft :LOCAL NORTH  
 LOCALE .ft :LOCAL EAST  
 LAT .deg :LATITUDE  
 LONG .deg :LONGITUDE  
 DLS .deg/100ft :DOGLEG SEVERITY

~ASCII DATA

0.00	0.00	115.81	0.00	0.00	0.00	0.00	40.4606239	-104.8011881	0.00
4.00	0.00	115.81	4.00	0.00	0.00	0.00	40.4606239	-104.8011881	0.00
104.00	0.00	115.81	104.00	0.00	0.00	0.00	40.4606239	-104.8011881	0.00
204.00	0.00	115.81	204.00	0.00	0.00	0.00	40.4606239	-104.8011881	0.00
304.00	0.00	115.81	304.00	0.00	0.00	0.00	40.4606239	-104.8011881	0.00
404.00	0.00	115.81	404.00	0.00	0.00	0.00	40.4606239	-104.8011881	0.00
504.00	0.00	115.81	504.00	0.00	0.00	0.00	40.4606239	-104.8011881	0.00
604.00	0.00	115.81	604.00	0.00	0.00	0.00	40.4606239	-104.8011881	0.00
704.00	0.00	115.81	704.00	0.00	0.00	0.00	40.4606239	-104.8011881	0.00
804.00	0.00	115.81	804.00	0.00	0.00	0.00	40.4606239	-104.8011881	0.00
904.00	0.00	115.81	904.00	0.00	0.00	0.00	40.4606239	-104.8011881	0.00
1004.00	0.00	115.81	1004.00	0.00	0.00	0.00	40.4606239	-104.8011881	0.00
1050.00	0.00	115.81	1050.00	0.00	0.00	0.00	40.4606239	-104.8011881	0.00
1104.00	1.08	115.81	1104.00	-0.44	-0.22	0.46	40.4606233	-104.8011864	2.00
1204.00	3.08	115.81	1203.93	-3.60	-1.80	3.73	40.4606189	-104.8011747	2.00
1251.07	4.02	115.81	1250.91	-6.14	-3.07	6.35	40.4606155	-104.8011652	2.00
1304.00	4.02	115.81	1303.70	-9.37	-4.69	9.69	40.4606110	-104.8011532	0.00
1404.00	4.02	115.81	1403.46	-15.48	-7.74	16.00	40.4606026	-104.8011305	0.00
1504.00	4.02	115.81	1503.21	-21.59	-10.79	22.32	40.4605943	-104.8011079	0.00
1604.00	4.02	115.81	1602.97	-27.69	-13.85	28.63	40.4605859	-104.8010852	0.00
1704.00	4.02	115.81	1702.72	-33.80	-16.90	34.94	40.4605775	-104.8010625	0.00
1804.00	4.02	115.81	1802.47	-39.91	-19.95	41.26	40.4605691	-104.8010398	0.00
1904.00	4.02	115.81	1902.23	-46.02	-23.01	47.57	40.4605607	-104.8010171	0.00
2004.00	4.02	115.81	2001.98	-52.12	-26.06	53.88	40.4605524	-104.8009944	0.00
2104.00	4.02	115.81	2101.73	-58.23	-29.11	60.20	40.4605440	-104.8009717	0.00
2204.00	4.02	115.81	2201.49	-64.34	-32.17	66.51	40.4605356	-104.8009490	0.00
2304.00	4.02	115.81	2301.24	-70.44	-35.22	72.82	40.4605272	-104.8009264	0.00
2404.00	4.02	115.81	2401.00	-76.55	-38.27	79.14	40.4605188	-104.8009037	0.00
2504.00	4.02	115.81	2500.75	-82.66	-41.33	85.45	40.4605105	-104.8008810	0.00
2604.00	4.02	115.81	2600.50	-88.76	-44.38	91.77	40.4605021	-104.8008583	0.00
2704.00	4.02	115.81	2700.26	-94.87	-47.43	98.08	40.4604937	-104.8008356	0.00
2804.00	4.02	115.81	2800.01	-100.98	-50.49	104.39	40.4604853	-104.8008129	0.00
2904.00	4.02	115.81	2899.77	-107.08	-53.54	110.71	40.4604769	-104.8007902	0.00
3004.00	4.02	115.81	2999.52	-113.19	-56.59	117.02	40.4604685	-104.8007675	0.00
3104.00	4.02	115.81	3099.27	-119.30	-59.65	123.33	40.4604602	-104.8007449	0.00

GOETZEL\_32C-30-M\_PWP\_REV-C.0\_.las

3204.00	4.02	115.81	3199.03	-125.40	-62.70	129.65	40.4604518	-104.8007222	0.00
3304.00	4.02	115.81	3298.78	-131.51	-65.75	135.96	40.4604434	-104.8006995	0.00
3404.00	4.02	115.81	3398.53	-137.62	-68.81	142.27	40.4604350	-104.8006768	0.00
3504.00	4.02	115.81	3498.29	-143.72	-71.86	148.59	40.4604266	-104.8006541	0.00
3604.00	4.02	115.81	3598.04	-149.83	-74.91	154.90	40.4604183	-104.8006314	0.00
3704.00	4.02	115.81	3697.80	-155.94	-77.97	161.21	40.4604099	-104.8006087	0.00
3804.00	4.02	115.81	3797.55	-162.04	-81.02	167.53	40.4604015	-104.8005860	0.00
3904.00	4.02	115.81	3897.30	-168.15	-84.07	173.84	40.4603931	-104.8005633	0.00
4004.00	4.02	115.81	3997.06	-174.26	-87.13	180.15	40.4603847	-104.8005407	0.00
4104.00	4.02	115.81	4096.81	-180.37	-90.18	186.47	40.4603764	-104.8005180	0.00
4204.00	4.02	115.81	4196.56	-186.47	-93.23	192.78	40.4603680	-104.8004953	0.00
4304.00	4.02	115.81	4296.32	-192.58	-96.29	199.09	40.4603596	-104.8004726	0.00
4404.00	4.02	115.81	4396.07	-198.69	-99.34	205.41	40.4603512	-104.8004499	0.00
4504.00	4.02	115.81	4495.83	-204.79	-102.39	211.72	40.4603428	-104.8004272	0.00
4604.00	4.02	115.81	4595.58	-210.90	-105.45	218.03	40.4603344	-104.8004045	0.00
4704.00	4.02	115.81	4695.33	-217.01	-108.50	224.35	40.4603261	-104.8003818	0.00
4804.00	4.02	115.81	4795.09	-223.11	-111.55	230.66	40.4603177	-104.8003592	0.00
4904.00	4.02	115.81	4894.84	-229.22	-114.61	236.97	40.4603093	-104.8003365	0.00
5004.00	4.02	115.81	4994.59	-235.33	-117.66	243.29	40.4603009	-104.8003138	0.00
5104.00	4.02	115.81	5094.35	-241.43	-120.71	249.60	40.4602925	-104.8002911	0.00
5204.00	4.02	115.81	5194.10	-247.54	-123.77	255.91	40.4602842	-104.8002684	0.00
5304.00	4.02	115.81	5293.86	-253.65	-126.82	262.23	40.4602758	-104.8002457	0.00
5404.00	4.02	115.81	5393.61	-259.75	-129.87	268.54	40.4602674	-104.8002230	0.00
5504.00	4.02	115.81	5493.36	-265.86	-132.93	274.85	40.4602590	-104.8002003	0.00
5604.00	4.02	115.81	5593.12	-271.97	-135.98	281.17	40.4602506	-104.8001777	0.00
5704.00	4.02	115.81	5692.87	-278.07	-139.03	287.48	40.4602423	-104.8001550	0.00
5804.00	4.02	115.81	5792.63	-284.18	-142.09	293.79	40.4602339	-104.8001323	0.00
5904.00	4.02	115.81	5892.38	-290.29	-145.14	300.11	40.4602255	-104.8001096	0.00
6004.00	4.02	115.81	5992.13	-296.40	-148.19	306.42	40.4602171	-104.8000869	0.00
6104.00	4.02	115.81	6091.89	-302.50	-151.25	312.73	40.4602087	-104.8000642	0.00
6204.00	4.02	115.81	6191.64	-308.61	-154.30	319.05	40.4602003	-104.8000415	0.00
6304.00	4.02	115.81	6291.39	-314.72	-157.35	325.36	40.4601920	-104.8000188	0.00
6404.00	4.02	115.81	6391.15	-320.82	-160.41	331.67	40.4601836	-104.7999962	0.00
6498.46	4.02	115.81	6485.37	-326.59	-163.29	337.64	40.4601757	-104.7999747	0.00
6504.00	3.59	119.57	6490.90	-326.91	-163.46	337.96	40.4601752	-104.7999736	9.00
6604.00	6.25	250.07	6590.71	-324.30	-166.87	335.56	40.4601658	-104.7999822	9.00
6704.00	15.07	260.62	6688.90	-306.10	-170.85	317.59	40.4601549	-104.8000468	9.00
6804.00	24.02	263.43	6783.04	-272.77	-175.31	284.47	40.4601427	-104.8001658	9.00
6904.00	33.00	264.77	6870.82	-225.12	-180.13	237.03	40.4601294	-104.8003363	9.00
7004.00	41.99	265.58	6950.09	-164.33	-185.20	176.44	40.4601155	-104.8005540	9.00
7104.00	50.98	266.15	7018.87	-91.89	-190.40	104.19	40.4601013	-104.8008137	9.00
7204.00	59.97	266.59	7075.49	-9.59	-195.59	22.05	40.4600870	-104.8011088	9.00
7304.00	68.97	266.96	7118.55	80.55	-200.64	-67.95	40.4600731	-104.8014322	9.00
7404.00	77.96	267.29	7146.99	176.31	-205.44	-163.60	40.4600600	-104.8017760	9.00

GOETZEL_32C-30-M_PWP_REV-C.0_.las									
7504.00	86.95	267.59	7160.10	275.32	-209.87	-262.53	40.4600478	-104.8021315	9.00
7537.86	90.00	267.69	7161.00	309.16	-211.26	-296.35	40.4600440	-104.8022530	9.00
7604.00	90.00	267.69	7161.00	375.28	-213.93	-362.43	40.4600367	-104.8024905	0.00
7704.00	90.00	267.69	7161.00	475.25	-217.95	-462.35	40.4600256	-104.8028495	0.00
7804.00	90.00	267.69	7161.00	575.23	-221.98	-562.27	40.4600146	-104.8032086	0.00
7904.00	90.00	267.69	7161.00	675.20	-226.01	-662.19	40.4600035	-104.8035677	0.00
8004.00	90.00	267.69	7161.00	775.17	-230.04	-762.11	40.4599924	-104.8039267	0.00
8104.00	90.00	267.69	7161.00	875.15	-234.07	-862.03	40.4599814	-104.8042858	0.00
8204.00	90.00	267.69	7161.00	975.12	-238.10	-961.95	40.4599703	-104.8046449	0.00
8304.00	90.00	267.69	7161.00	1075.09	-242.13	-1061.86	40.4599592	-104.8050039	0.00
8404.00	90.00	267.69	7161.00	1175.06	-246.16	-1161.78	40.4599481	-104.8053630	0.00
8504.00	90.00	267.69	7161.00	1275.04	-250.19	-1261.70	40.4599371	-104.8057221	0.00
8604.00	90.00	267.69	7161.00	1375.01	-254.22	-1361.62	40.4599260	-104.8060811	0.00
8704.00	90.00	267.69	7161.00	1474.98	-258.25	-1461.54	40.4599149	-104.8064402	0.00
8804.00	90.00	267.69	7161.00	1574.96	-262.27	-1561.46	40.4599038	-104.8067993	0.00
8904.00	90.00	267.69	7161.00	1674.93	-266.30	-1661.38	40.4598928	-104.8071583	0.00
9004.00	90.00	267.69	7161.00	1774.90	-270.33	-1761.30	40.4598817	-104.8075174	0.00
9104.00	90.00	267.69	7161.00	1874.88	-274.36	-1861.21	40.4598706	-104.8078765	0.00
9204.00	90.00	267.69	7161.00	1974.85	-278.39	-1961.13	40.4598595	-104.8082355	0.00
9304.00	90.00	267.69	7161.00	2074.82	-282.42	-2061.05	40.4598484	-104.8085946	0.00
9404.00	90.00	267.69	7161.00	2174.79	-286.45	-2160.97	40.4598374	-104.8089536	0.00
9504.00	90.00	267.69	7161.00	2274.77	-290.48	-2260.89	40.4598263	-104.8093127	0.00
9604.00	90.00	267.69	7161.00	2374.74	-294.51	-2360.81	40.4598152	-104.8096718	0.00
9704.00	90.00	267.69	7161.00	2474.71	-298.54	-2460.73	40.4598041	-104.8100308	0.00
9804.00	90.00	267.69	7161.00	2574.69	-302.56	-2560.65	40.4597930	-104.8103899	0.00
9904.00	90.00	267.69	7161.00	2674.66	-306.59	-2660.56	40.4597819	-104.8107490	0.00
10004.00	90.00	267.69	7161.00	2774.63	-310.62	-2760.48	40.4597708	-104.8111080	0.00
10104.00	90.00	267.69	7161.00	2874.61	-314.65	-2860.40	40.4597598	-104.8114671	0.00
10204.00	90.00	267.69	7161.00	2974.58	-318.68	-2960.32	40.4597487	-104.8118261	0.00
10304.00	90.00	267.69	7161.00	3074.55	-322.71	-3060.24	40.4597376	-104.8121852	0.00
10404.00	90.00	267.69	7161.00	3174.53	-326.74	-3160.16	40.4597265	-104.8125443	0.00
10504.00	90.00	267.69	7161.00	3274.50	-330.77	-3260.08	40.4597154	-104.8129033	0.00
10604.00	90.00	267.69	7161.00	3374.47	-334.80	-3360.00	40.4597043	-104.8132624	0.00
10704.00	90.00	267.69	7161.00	3474.44	-338.83	-3459.92	40.4596932	-104.8136215	0.00
10804.00	90.00	267.69	7161.00	3574.42	-342.86	-3559.83	40.4596821	-104.8139805	0.00
10904.00	90.00	267.69	7161.00	3674.39	-346.88	-3659.75	40.4596710	-104.8143396	0.00
11004.00	90.00	267.69	7161.00	3774.36	-350.91	-3759.67	40.4596599	-104.8146986	0.00
11104.00	90.00	267.69	7161.00	3874.34	-354.94	-3859.59	40.4596488	-104.8150577	0.00
11204.00	90.00	267.69	7161.00	3974.31	-358.97	-3959.51	40.4596377	-104.8154168	0.00
11304.00	90.00	267.69	7161.00	4074.28	-363.00	-4059.43	40.4596266	-104.8157758	0.00
11404.00	90.00	267.69	7161.00	4174.26	-367.03	-4159.35	40.4596155	-104.8161349	0.00
11504.00	90.00	267.69	7161.00	4274.23	-371.06	-4259.27	40.4596044	-104.8164939	0.00
11604.00	90.00	267.69	7161.00	4374.20	-375.09	-4359.18	40.4595933	-104.8168530	0.00
11704.00	90.00	267.69	7161.00	4474.18	-379.12	-4459.10	40.4595822	-104.8172121	0.00

GOETZEL_32C-30-M_PWP_REV-C.0_.las									
11804.00	90.00	267.69	7161.00	4574.15	-383.15	-4559.02	40.4595710	-104.8175711	0.00
11904.00	90.00	267.69	7161.00	4674.12	-387.17	-4658.94	40.4595599	-104.8179302	0.00
12004.00	90.00	267.69	7161.00	4774.09	-391.20	-4758.86	40.4595488	-104.8182893	0.00
12104.00	90.00	267.69	7161.00	4874.07	-395.23	-4858.78	40.4595377	-104.8186483	0.00
12204.00	90.00	267.69	7161.00	4974.04	-399.26	-4958.70	40.4595266	-104.8190074	0.00
12304.00	90.00	267.69	7161.00	5074.01	-403.29	-5058.62	40.4595155	-104.8193664	0.00
12404.00	90.00	267.69	7161.00	5173.99	-407.32	-5158.53	40.4595044	-104.8197255	0.00
12504.00	90.00	267.69	7161.00	5273.96	-411.35	-5258.45	40.4594933	-104.8200846	0.00
12604.00	90.00	267.69	7161.00	5373.93	-415.38	-5358.37	40.4594821	-104.8204436	0.00
12704.00	90.00	267.69	7161.00	5473.91	-419.41	-5458.29	40.4594710	-104.8208027	0.00
12804.00	90.00	267.69	7161.00	5573.88	-423.44	-5558.21	40.4594599	-104.8211617	0.00
12904.00	90.00	267.69	7161.00	5673.85	-427.47	-5658.13	40.4594488	-104.8215208	0.00
13004.00	90.00	267.69	7161.00	5773.82	-431.49	-5758.05	40.4594376	-104.8218798	0.00
13104.00	90.00	267.69	7161.00	5873.80	-435.52	-5857.97	40.4594265	-104.8222389	0.00
13204.00	90.00	267.69	7161.00	5973.77	-439.55	-5957.89	40.4594154	-104.8225980	0.00
13304.00	90.00	267.69	7161.00	6073.74	-443.58	-6057.80	40.4594043	-104.8229570	0.00
13404.00	90.00	267.69	7161.00	6173.72	-447.61	-6157.72	40.4593931	-104.8233161	0.00
13504.00	90.00	267.69	7161.00	6273.69	-451.64	-6257.64	40.4593820	-104.8236751	0.00
13604.00	90.00	267.69	7161.00	6373.66	-455.67	-6357.56	40.4593709	-104.8240342	0.00
13704.00	90.00	267.69	7161.00	6473.64	-459.70	-6457.48	40.4593598	-104.8243933	0.00
13804.00	90.00	267.69	7161.00	6573.61	-463.73	-6557.40	40.4593486	-104.8247523	0.00
13904.00	90.00	267.69	7161.00	6673.58	-467.76	-6657.32	40.4593375	-104.8251114	0.00
14004.00	90.00	267.69	7161.00	6773.56	-471.79	-6757.24	40.4593264	-104.8254704	0.00
14104.00	90.00	267.69	7161.00	6873.53	-475.81	-6857.15	40.4593152	-104.8258295	0.00
14204.00	90.00	267.69	7161.00	6973.50	-479.84	-6957.07	40.4593041	-104.8261886	0.00
14304.00	90.00	267.69	7161.00	7073.47	-483.87	-7056.99	40.4592930	-104.8265476	0.00
14404.00	90.00	267.69	7161.00	7173.45	-487.90	-7156.91	40.4592818	-104.8269067	0.00
14504.00	90.00	267.69	7161.00	7273.42	-491.93	-7256.83	40.4592707	-104.8272657	0.00
14604.00	90.00	267.69	7161.00	7373.39	-495.96	-7356.75	40.4592595	-104.8276248	0.00
14704.00	90.00	267.69	7161.00	7473.37	-499.99	-7456.67	40.4592484	-104.8279838	0.00
14804.00	90.00	267.69	7161.00	7573.34	-504.02	-7556.59	40.4592373	-104.8283429	0.00
14904.00	90.00	267.69	7161.00	7673.31	-508.05	-7656.50	40.4592261	-104.8287020	0.00
15004.00	90.00	267.69	7161.00	7773.29	-512.08	-7756.42	40.4592150	-104.8290610	0.00
15104.00	90.00	267.69	7161.00	7873.26	-516.10	-7856.34	40.4592038	-104.8294201	0.00
15204.00	90.00	267.69	7161.00	7973.23	-520.13	-7956.26	40.4591927	-104.8297791	0.00
15304.00	90.00	267.69	7161.00	8073.21	-524.16	-8056.18	40.4591815	-104.8301382	0.00
15404.00	90.00	267.69	7161.00	8173.18	-528.19	-8156.10	40.4591704	-104.8304972	0.00
15504.00	90.00	267.69	7161.00	8273.15	-532.22	-8256.02	40.4591592	-104.8308563	0.00
15604.00	90.00	267.69	7161.00	8373.12	-536.25	-8355.94	40.4591481	-104.8312153	0.00
15704.00	90.00	267.69	7161.00	8473.10	-540.28	-8455.86	40.4591369	-104.8315744	0.00
15804.00	90.00	267.69	7161.00	8573.07	-544.31	-8555.77	40.4591258	-104.8319335	0.00
15810.83	90.00	267.69	7161.00	8579.90	-544.58	-8562.60	40.4591250	-104.8319580	0.00



# Planned Wellpath Report

GOETZEL 32C-30-M PWP (REV-C.0)

Page 1 of 8



## REFERENCE WELLPATH IDENTIFICATION

Operator	SYNERGY RESOURCES CORPORATION	Slot	SLOT#11 GOETZEL 32C-30-M (2073'FNL & 2446'FEL, SEC.29)
Area	COLORADO	Well	GOETZEL 32C-30-M
Field	WELD COUNTY (NAD83,TRUE NORTH)	Wellbore	GOETZEL 32C-30-M PWB
Facility	SEC.29-T06N-R66W		

## REPORT SETUP INFORMATION

Projection System	NAD83 / Lambert Colorado SP, Northern Zone (501), US feet	Software System	WellArchitect® 5.0
North Reference	True	User	Wagnjam
Scale	0.999964	Report Generated	2/24/2017 at 6:10:40 PM
Convergence at slot	0.46° East	Database/Source file	WA_DEN_Denver_Defn/GOETZEL_32C-30-M_PWP__REV-C.0_.xml

## WELLPATH LOCATION

	Local coordinates		Grid coordinates		Geographic coordinates	
	North[ft]	East[ft]	Easting[US ft]	Northing[US ft]	Latitude	Longitude
Slot Location	-260.18	-1.39	3194450.31	1411411.83	40°27'38.246"N	104°48'04.277"W
Facility Reference Pt			3194449.65	1411672.01	40°27'40.817"N	104°48'04.259"W
Field Reference Pt			3171284.48	1426358.81	40°30'07.643"N	104°53'02.634"W

## WELLPATH DATUM

Calculation method	Minimum curvature	PROPETRO 12 (4') (RKB) to Facility Vertical Datum	4732.00ft
Horizontal Reference Pt	Slot	PROPETRO 12 (4') (RKB) to Mean Sea Level	4732.00ft
Vertical Reference Pt	PROPETRO 12 (4') (RKB)	PROPETRO 12 (4') (RKB) to Mud Line at Slot (SLOT#11 GOETZEL 32C-30-M (2073'FNL & 2446'FEL, SEC.29))	4732.00ft
MD Reference Pt	PROPETRO 12 (4') (RKB)	Section Origin	N 0.00, E 0.00 ft
Field Vertical Reference	Mean Sea Level	Section Azimuth	266.36°





# Planned Wellpath Report

GOETZEL 32C-30-M PWP (REV-C.0)

Page 2 of 8



## REFERENCE WELLPATH IDENTIFICATION

Operator	SYNERGY RESOURCES CORPORATION	Slot	SLOT#11 GOETZEL 32C-30-M (2073'FNL & 2446'FEL, SEC.29)
Area	COLORADO	Well	GOETZEL 32C-30-M
Field	WELD COUNTY (NAD83,TRUE NORTH)	Wellbore	GOETZEL 32C-30-M PWB
Facility	SEC.29-T06N-R66W		

## WELLPATH DATA (165 stations) † = interpolated/extrapolated station

MD [ft]	Inclination [°]	Azimuth [°]	TVD [ft]	Vert Sect [ft]	North [ft]	East [ft]	DLS [°/100ft]	Comments
0.00†	0.000	115.810	0.00	0.00	0.00	0.00	0.00	
4.00	0.000	115.810	4.00	0.00	0.00	0.00	0.00	Tie On
104.00†	0.000	115.810	104.00	0.00	0.00	0.00	0.00	
204.00†	0.000	115.810	204.00	0.00	0.00	0.00	0.00	
304.00†	0.000	115.810	304.00	0.00	0.00	0.00	0.00	
404.00†	0.000	115.810	404.00	0.00	0.00	0.00	0.00	
504.00†	0.000	115.810	504.00	0.00	0.00	0.00	0.00	
604.00†	0.000	115.810	604.00	0.00	0.00	0.00	0.00	
704.00†	0.000	115.810	704.00	0.00	0.00	0.00	0.00	
804.00†	0.000	115.810	804.00	0.00	0.00	0.00	0.00	
904.00†	0.000	115.810	904.00	0.00	0.00	0.00	0.00	
1004.00†	0.000	115.810	1004.00	0.00	0.00	0.00	0.00	
1050.00	0.000	115.810	1050.00	0.00	0.00	0.00	0.00	End of Tangent
1104.00†	1.080	115.810	1104.00	-0.44	-0.22	0.46	2.00	
1204.00†	3.080	115.810	1203.93	-3.60	-1.80	3.73	2.00	
1251.07	4.021	115.810	1250.91	-6.14	-3.07	6.35	2.00	End of Build
1304.00†	4.021	115.810	1303.70	-9.37	-4.69	9.69	0.00	
1404.00†	4.021	115.810	1403.46	-15.48	-7.74	16.00	0.00	
1504.00†	4.021	115.810	1503.21	-21.59	-10.79	22.32	0.00	
1604.00†	4.021	115.810	1602.97	-27.69	-13.85	28.63	0.00	
1704.00†	4.021	115.810	1702.72	-33.80	-16.90	34.94	0.00	
1804.00†	4.021	115.810	1802.47	-39.91	-19.95	41.26	0.00	
1904.00†	4.021	115.810	1902.23	-46.02	-23.01	47.57	0.00	
2004.00†	4.021	115.810	2001.98	-52.12	-26.06	53.88	0.00	
2104.00†	4.021	115.810	2101.73	-58.23	-29.11	60.20	0.00	
2204.00†	4.021	115.810	2201.49	-64.34	-32.17	66.51	0.00	
2304.00†	4.021	115.810	2301.24	-70.44	-35.22	72.82	0.00	
2404.00†	4.021	115.810	2401.00	-76.55	-38.27	79.14	0.00	
2504.00†	4.021	115.810	2500.75	-82.66	-41.33	85.45	0.00	
2604.00†	4.021	115.810	2600.50	-88.76	-44.38	91.77	0.00	



# Planned Wellpath Report

GOETZEL 32C-30-M PWP (REV-C.0)

Page 3 of 8



## REFERENCE WELLPATH IDENTIFICATION

Operator	SYNERGY RESOURCES CORPORATION	Slot	SLOT#11 GOETZEL 32C-30-M (2073'FNL & 2446'FEL, SEC.29)
Area	COLORADO	Well	GOETZEL 32C-30-M
Field	WELD COUNTY (NAD83,TRUE NORTH)	Wellbore	GOETZEL 32C-30-M PWB
Facility	SEC.29-T06N-R66W		

## WELLPATH DATA (165 stations) † = interpolated/extrapolated station

MD [ft]	Inclination [°]	Azimuth [°]	TVD [ft]	Vert Sect [ft]	North [ft]	East [ft]	DLS [°/100ft]	Comments
2704.00†	4.021	115.810	2700.26	-94.87	-47.43	98.08	0.00	
2804.00†	4.021	115.810	2800.01	-100.98	-50.49	104.39	0.00	
2904.00†	4.021	115.810	2899.77	-107.08	-53.54	110.71	0.00	
3004.00†	4.021	115.810	2999.52	-113.19	-56.59	117.02	0.00	
3104.00†	4.021	115.810	3099.27	-119.30	-59.65	123.33	0.00	
3204.00†	4.021	115.810	3199.03	-125.40	-62.70	129.65	0.00	
3304.00†	4.021	115.810	3298.78	-131.51	-65.75	135.96	0.00	
3404.00†	4.021	115.810	3398.53	-137.62	-68.81	142.27	0.00	
3504.00†	4.021	115.810	3498.29	-143.72	-71.86	148.59	0.00	
3604.00†	4.021	115.810	3598.04	-149.83	-74.91	154.90	0.00	
3704.00†	4.021	115.810	3697.80	-155.94	-77.97	161.21	0.00	
3804.00†	4.021	115.810	3797.55	-162.04	-81.02	167.53	0.00	
3904.00†	4.021	115.810	3897.30	-168.15	-84.07	173.84	0.00	
4004.00†	4.021	115.810	3997.06	-174.26	-87.13	180.15	0.00	
4104.00†	4.021	115.810	4096.81	-180.37	-90.18	186.47	0.00	
4204.00†	4.021	115.810	4196.56	-186.47	-93.23	192.78	0.00	
4304.00†	4.021	115.810	4296.32	-192.58	-96.29	199.09	0.00	
4404.00†	4.021	115.810	4396.07	-198.69	-99.34	205.41	0.00	
4504.00†	4.021	115.810	4495.83	-204.79	-102.39	211.72	0.00	
4604.00†	4.021	115.810	4595.58	-210.90	-105.45	218.03	0.00	
4704.00†	4.021	115.810	4695.33	-217.01	-108.50	224.35	0.00	
4804.00†	4.021	115.810	4795.09	-223.11	-111.55	230.66	0.00	
4904.00†	4.021	115.810	4894.84	-229.22	-114.61	236.97	0.00	
5004.00†	4.021	115.810	4994.59	-235.33	-117.66	243.29	0.00	
5104.00†	4.021	115.810	5094.35	-241.43	-120.71	249.60	0.00	
5204.00†	4.021	115.810	5194.10	-247.54	-123.77	255.91	0.00	
5304.00†	4.021	115.810	5293.86	-253.65	-126.82	262.23	0.00	
5404.00†	4.021	115.810	5393.61	-259.75	-129.87	268.54	0.00	
5504.00†	4.021	115.810	5493.36	-265.86	-132.93	274.85	0.00	
5604.00†	4.021	115.810	5593.12	-271.97	-135.98	281.17	0.00	



# Planned Wellpath Report

GOETZEL 32C-30-M PWP (REV-C.0)

Page 4 of 8



## REFERENCE WELLPATH IDENTIFICATION

Operator	SYNERGY RESOURCES CORPORATION	Slot	SLOT#11 GOETZEL 32C-30-M (2073'FNL & 2446'FEL, SEC.29)
Area	COLORADO	Well	GOETZEL 32C-30-M
Field	WELD COUNTY (NAD83,TRUE NORTH)	Wellbore	GOETZEL 32C-30-M PWB
Facility	SEC.29-T06N-R66W		

## WELLPATH DATA (165 stations) † = interpolated/extrapolated station

MD [ft]	Inclination [°]	Azimuth [°]	TVD [ft]	Vert Sect [ft]	North [ft]	East [ft]	DLS [°/100ft]	Comments
5704.00†	4.021	115.810	5692.87	-278.07	-139.03	287.48	0.00	
5804.00†	4.021	115.810	5792.63	-284.18	-142.09	293.79	0.00	
5904.00†	4.021	115.810	5892.38	-290.29	-145.14	300.11	0.00	
6004.00†	4.021	115.810	5992.13	-296.40	-148.19	306.42	0.00	
6104.00†	4.021	115.810	6091.89	-302.50	-151.25	312.73	0.00	
6204.00†	4.021	115.810	6191.64	-308.61	-154.30	319.05	0.00	
6304.00†	4.021	115.810	6291.39	-314.72	-157.35	325.36	0.00	
6404.00†	4.021	115.810	6391.15	-320.82	-160.41	331.67	0.00	
6498.46	4.021	115.810	6485.37	-326.59	-163.29	337.64	0.00	End of Tangent
6504.00†	3.590	119.574	6490.90	-326.91	-163.46	337.96	9.00	
6604.00†	6.247	250.071	6590.71	-324.30	-166.87	335.56	9.00	
6704.00†	15.070	260.622	6688.90	-306.10	-170.85	317.59	9.00	
6804.00†	24.023	263.428	6783.04	-272.77	-175.31	284.47	9.00	
6904.00†	33.001	264.766	6870.82	-225.12	-180.13	237.03	9.00	
7004.00†	41.987	265.581	6950.09	-164.33	-185.20	176.44	9.00	
7104.00†	50.978	266.152	7018.87	-91.89	-190.40	104.19	9.00	
7204.00†	59.971	266.593	7075.49	-9.59	-195.59	22.05	9.00	
7304.00†	68.965	266.961	7118.55	80.55	-200.64	-67.95	9.00	
7404.00†	77.959	267.286	7146.99	176.31	-205.44	-163.60	9.00	
7504.00†	86.954	267.590	7160.10	275.32	-209.87	-262.53	9.00	
7537.86	90.000	267.691	7161.00 <sup>1</sup>	309.16	-211.26	-296.35	9.00	End of 3D Arc
7604.00†	90.000	267.691	7161.00	375.28	-213.93	-362.43	0.00	
7704.00†	90.000	267.691	7161.00	475.25	-217.95	-462.35	0.00	
7804.00†	90.000	267.691	7161.00	575.23	-221.98	-562.27	0.00	
7904.00†	90.000	267.691	7161.00	675.20	-226.01	-662.19	0.00	
8004.00†	90.000	267.691	7161.00	775.17	-230.04	-762.11	0.00	
8104.00†	90.000	267.691	7161.00	875.15	-234.07	-862.03	0.00	
8204.00†	90.000	267.691	7161.00	975.12	-238.10	-961.95	0.00	
8304.00†	90.000	267.691	7161.00	1075.09	-242.13	-1061.86	0.00	
8404.00†	90.000	267.691	7161.00	1175.06	-246.16	-1161.78	0.00	



# Planned Wellpath Report

GOETZEL 32C-30-M PWP (REV-C.0)

Page 5 of 8



## REFERENCE WELLPATH IDENTIFICATION

Operator	SYNERGY RESOURCES CORPORATION	Slot	SLOT#11 GOETZEL 32C-30-M (2073'FNL & 2446'FEL, SEC.29)
Area	COLORADO	Well	GOETZEL 32C-30-M
Field	WELD COUNTY (NAD83,TRUE NORTH)	Wellbore	GOETZEL 32C-30-M PWB
Facility	SEC.29-T06N-R66W		

## WELLPATH DATA (165 stations) † = interpolated/extrapolated station

MD [ft]	Inclination [°]	Azimuth [°]	TVD [ft]	Vert Sect [ft]	North [ft]	East [ft]	DLS [°/100ft]	Comments
8504.00†	90.000	267.691	7161.00	1275.04	-250.19	-1261.70	0.00	
8604.00†	90.000	267.691	7161.00	1375.01	-254.22	-1361.62	0.00	
8704.00†	90.000	267.691	7161.00	1474.98	-258.25	-1461.54	0.00	
8804.00†	90.000	267.691	7161.00	1574.96	-262.27	-1561.46	0.00	
8904.00†	90.000	267.691	7161.00	1674.93	-266.30	-1661.38	0.00	
9004.00†	90.000	267.691	7161.00	1774.90	-270.33	-1761.30	0.00	
9104.00†	90.000	267.691	7161.00	1874.88	-274.36	-1861.21	0.00	
9204.00†	90.000	267.691	7161.00	1974.85	-278.39	-1961.13	0.00	
9304.00†	90.000	267.691	7161.00	2074.82	-282.42	-2061.05	0.00	
9404.00†	90.000	267.691	7161.00	2174.79	-286.45	-2160.97	0.00	
9504.00†	90.000	267.691	7161.00	2274.77	-290.48	-2260.89	0.00	
9604.00†	90.000	267.691	7161.00	2374.74	-294.51	-2360.81	0.00	
9704.00†	90.000	267.691	7161.00	2474.71	-298.54	-2460.73	0.00	
9804.00†	90.000	267.691	7161.00	2574.69	-302.56	-2560.65	0.00	
9904.00†	90.000	267.691	7161.00	2674.66	-306.59	-2660.56	0.00	
10004.00†	90.000	267.691	7161.00	2774.63	-310.62	-2760.48	0.00	
10104.00†	90.000	267.691	7161.00	2874.61	-314.65	-2860.40	0.00	
10204.00†	90.000	267.691	7161.00	2974.58	-318.68	-2960.32	0.00	
10304.00†	90.000	267.691	7161.00	3074.55	-322.71	-3060.24	0.00	
10404.00†	90.000	267.691	7161.00	3174.53	-326.74	-3160.16	0.00	
10504.00†	90.000	267.691	7161.00	3274.50	-330.77	-3260.08	0.00	
10604.00†	90.000	267.691	7161.00	3374.47	-334.80	-3360.00	0.00	
10704.00†	90.000	267.691	7161.00	3474.44	-338.83	-3459.92	0.00	
10804.00†	90.000	267.691	7161.00	3574.42	-342.86	-3559.83	0.00	
10904.00†	90.000	267.691	7161.00	3674.39	-346.88	-3659.75	0.00	
11004.00†	90.000	267.691	7161.00	3774.36	-350.91	-3759.67	0.00	
11104.00†	90.000	267.691	7161.00	3874.34	-354.94	-3859.59	0.00	
11204.00†	90.000	267.691	7161.00	3974.31	-358.97	-3959.51	0.00	
11304.00†	90.000	267.691	7161.00	4074.28	-363.00	-4059.43	0.00	
11404.00†	90.000	267.691	7161.00	4174.26	-367.03	-4159.35	0.00	



# Planned Wellpath Report

GOETZEL 32C-30-M PWP (REV-C.0)

Page 6 of 8



## REFERENCE WELLPATH IDENTIFICATION

Operator	SYNERGY RESOURCES CORPORATION	Slot	SLOT#11 GOETZEL 32C-30-M (2073'FNL & 2446'FEL, SEC.29)
Area	COLORADO	Well	GOETZEL 32C-30-M
Field	WELD COUNTY (NAD83,TRUE NORTH)	Wellbore	GOETZEL 32C-30-M PWB
Facility	SEC.29-T06N-R66W		

## WELLPATH DATA (165 stations) † = interpolated/extrapolated station

MD [ft]	Inclination [°]	Azimuth [°]	TVD [ft]	Vert Sect [ft]	North [ft]	East [ft]	DLS [°/100ft]	Comments
11504.00†	90.000	267.691	7161.00	4274.23	-371.06	-4259.27	0.00	
11604.00†	90.000	267.691	7161.00	4374.20	-375.09	-4359.18	0.00	
11704.00†	90.000	267.691	7161.00	4474.18	-379.12	-4459.10	0.00	
11804.00†	90.000	267.691	7161.00	4574.15	-383.15	-4559.02	0.00	
11904.00†	90.000	267.691	7161.00	4674.12	-387.17	-4658.94	0.00	
12004.00†	90.000	267.691	7161.00	4774.09	-391.20	-4758.86	0.00	
12104.00†	90.000	267.691	7161.00	4874.07	-395.23	-4858.78	0.00	
12204.00†	90.000	267.691	7161.00	4974.04	-399.26	-4958.70	0.00	
12304.00†	90.000	267.691	7161.00	5074.01	-403.29	-5058.62	0.00	
12404.00†	90.000	267.691	7161.00	5173.99	-407.32	-5158.53	0.00	
12504.00†	90.000	267.691	7161.00	5273.96	-411.35	-5258.45	0.00	
12604.00†	90.000	267.691	7161.00	5373.93	-415.38	-5358.37	0.00	
12704.00†	90.000	267.691	7161.00	5473.91	-419.41	-5458.29	0.00	
12804.00†	90.000	267.691	7161.00	5573.88	-423.44	-5558.21	0.00	
12904.00†	90.000	267.691	7161.00	5673.85	-427.47	-5658.13	0.00	
13004.00†	90.000	267.691	7161.00	5773.82	-431.49	-5758.05	0.00	
13104.00†	90.000	267.691	7161.00	5873.80	-435.52	-5857.97	0.00	
13204.00†	90.000	267.691	7161.00	5973.77	-439.55	-5957.89	0.00	
13304.00†	90.000	267.691	7161.00	6073.74	-443.58	-6057.80	0.00	
13404.00†	90.000	267.691	7161.00	6173.72	-447.61	-6157.72	0.00	
13504.00†	90.000	267.691	7161.00	6273.69	-451.64	-6257.64	0.00	
13604.00†	90.000	267.691	7161.00	6373.66	-455.67	-6357.56	0.00	
13704.00†	90.000	267.691	7161.00	6473.64	-459.70	-6457.48	0.00	
13804.00†	90.000	267.691	7161.00	6573.61	-463.73	-6557.40	0.00	
13904.00†	90.000	267.691	7161.00	6673.58	-467.76	-6657.32	0.00	
14004.00†	90.000	267.691	7161.00	6773.56	-471.79	-6757.24	0.00	
14104.00†	90.000	267.691	7161.00	6873.53	-475.81	-6857.15	0.00	
14204.00†	90.000	267.691	7161.00	6973.50	-479.84	-6957.07	0.00	
14304.00†	90.000	267.691	7161.00	7073.47	-483.87	-7056.99	0.00	
14404.00†	90.000	267.691	7161.00	7173.45	-487.90	-7156.91	0.00	



# Planned Wellpath Report

GOETZEL 32C-30-M PWP (REV-C.0)

Page 7 of 8



## REFERENCE WELLPATH IDENTIFICATION

Operator	SYNERGY RESOURCES CORPORATION	Slot	SLOT#11 GOETZEL 32C-30-M (2073'FNL & 2446'FEL, SEC.29)
Area	COLORADO	Well	GOETZEL 32C-30-M
Field	WELD COUNTY (NAD83,TRUE NORTH)	Wellbore	GOETZEL 32C-30-M PWB
Facility	SEC.29-T06N-R66W		

## WELLPATH DATA (165 stations) † = interpolated/extrapolated station

MD [ft]	Inclination [°]	Azimuth [°]	TVD [ft]	Vert Sect [ft]	North [ft]	East [ft]	DLS [°/100ft]	Comments
14504.00†	90.000	267.691	7161.00	7273.42	-491.93	-7256.83	0.00	
14604.00†	90.000	267.691	7161.00	7373.39	-495.96	-7356.75	0.00	
14704.00†	90.000	267.691	7161.00	7473.37	-499.99	-7456.67	0.00	
14804.00†	90.000	267.691	7161.00	7573.34	-504.02	-7556.59	0.00	
14904.00†	90.000	267.691	7161.00	7673.31	-508.05	-7656.50	0.00	
15004.00†	90.000	267.691	7161.00	7773.29	-512.08	-7756.42	0.00	
15104.00†	90.000	267.691	7161.00	7873.26	-516.10	-7856.34	0.00	
15204.00†	90.000	267.691	7161.00	7973.23	-520.13	-7956.26	0.00	
15304.00†	90.000	267.691	7161.00	8073.21	-524.16	-8056.18	0.00	
15404.00†	90.000	267.691	7161.00	8173.18	-528.19	-8156.10	0.00	
15504.00†	90.000	267.691	7161.00	8273.15	-532.22	-8256.02	0.00	
15604.00†	90.000	267.691	7161.00	8373.12	-536.25	-8355.94	0.00	
15704.00†	90.000	267.691	7161.00	8473.10	-540.28	-8455.86	0.00	
15804.00†	90.000	267.691	7161.00	8573.07	-544.31	-8555.77	0.00	
15810.83	90.000	267.691	7161.00 <sup>2</sup>	8579.90	-544.58	-8562.60	0.00	End of Tangent

## HOLE & CASING SECTIONS - Ref Wellbore: GOETZEL 32C-30-M PWB Ref Wellpath: GOETZEL 32C-30-M PWP (REV-C.0)

String/Diameter	Start MD [ft]	End MD [ft]	Interval [ft]	Start TVD [ft]	End TVD [ft]	Start N/S [ft]	Start E/W [ft]	End N/S [ft]	End E/W [ft]
13.5in Open Hole	4.00	1700.00	1696.00	4.00	1698.73	0.00	0.00	-16.78	34.69
9.625in Casing Surface	4.00	1700.00	1696.00	4.00	1698.73	0.00	0.00	-16.78	34.69
8.5in Open Hole	1700.00	15810.83	14110.83	1698.73	7161.00	-16.78	34.69	-544.58	-8562.60



# Planned Wellpath Report

GOETZEL 32C-30-M PWP (REV-C.0)

Page 8 of 8



## REFERENCE WELLPATH IDENTIFICATION

Operator	SYNERGY RESOURCES CORPORATION	Slot	SLOT#11 GOETZEL 32C-30-M (2073'FNL & 2446'FEL, SEC.29)
Area	COLORADO	Well	GOETZEL 32C-30-M
Field	WELD COUNTY (NAD83,TRUE NORTH)	Wellbore	GOETZEL 32C-30-M PWB
Facility	SEC.29-T06N-R66W		

## TARGETS

Name	MD [ft]	TVD [ft]	North [ft]	East [ft]	Grid East [US ft]	Grid North [US ft]	Latitude	Longitude	Shape
SEC.29-T06N-R66W NORTHERN		-16.00	260.16	1.41	3194449.66	1411671.99	40°27'40.817"N	104°48'04.259"W	polygon
SEC.29-T06N-R66W SOUTHERN		-16.00	260.16	1.41	3194449.66	1411671.99	40°27'40.817"N	104°48'04.259"W	polygon
SEC.30-T06N-R66W NORTHERN		-16.00	260.16	1.41	3194449.66	1411671.99	40°27'40.817"N	104°48'04.259"W	polygon
SEC.30-T06N-R66W SOUTHERN		-16.00	260.16	1.41	3194449.66	1411671.99	40°27'40.817"N	104°48'04.259"W	polygon
GOETZEL 32C-30-M BHL REV-1 (2303'FNL & 510'FWL, SEC.30)		7161.00	-525.40	-8202.50	3186252.51	1410821.83	40°27'33.041"N	104°49'50.390"W	circle
2) GOETZEL 32C-30-M BHL REV-2 (2303'FNL & 150'FWL, SEC.30)	15810.83	7161.00	-544.58	-8562.60	3185892.59	1410799.81	40°27'32.850"N	104°49'55.049"W	point
1) GOETZEL 32C-30-M TOP REV-1 (2278'FNL & 2577'FWL, SEC.29)	7537.86	7161.00	-211.26	-296.35	3194155.64	1411198.25	40°27'36.158"N	104°48'08.111"W	circle

## SURVEY PROGRAM - Ref Wellbore: GOETZEL 32C-30-M PWB Ref Wellpath: GOETZEL 32C-30-M PWP (REV-C.0)

Start MD [ft]	End MD [ft]	Positional Uncertainty Model	Log Name/Comment	Wellbore
4.00	1700.00	Custom BHI NaviTrak (Standard Rotating) (Rockies 0.03Gt model)		GOETZEL 32C-30-M PWB
1700.00	15811.00	Custom BHI AutoTrak Curve (IFR1, Short) (Rockies 0.03Gt model)		GOETZEL 32C-30-M PWB