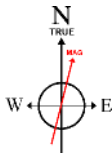


Location:	COLORADO	Slot:	SLOT#07 GOETZEL 31C-30-M (1993)FNL & 2446)FEL, SEC.29)
Field:	WELD COUNTY (NAD83,TRUE NORTH)	Well:	GOETZEL 31C-30-M
Facility:	SEC.29-T06N-R66W	Wellbore:	GOETZEL 31C-30-M PWB

Plot reference wellpath is GOETZEL 31C-30-M PWP (REV-C.0)		Grid System: NAD83 Lambert Colorado SP, Northern Zone [501], US feet	
True vertical depths are referenced to PROPETRO 12 (4) (RKB)		* = Wellpath was transformed from a different geoidetic datum	
Measured depths are referenced to PROPETRO 12 (4) (RKB)		North Reference: True north	
PROPETRO 12 (4) (RKB) to Mean Sea Level: 4732 feet		Scale: True distance	
Mean Sea Level to Mud line (At Slot: SLO7K07 GOETZEL 31C-30-M (1903FNL & 2446FEL, SEC.29)): 0 feet		Depths are in feet	
Coordinates are in feet referenced to Slot		Created by: waggam on 2017-02-24	
		Database: WA_DEN_Denver_Dein	

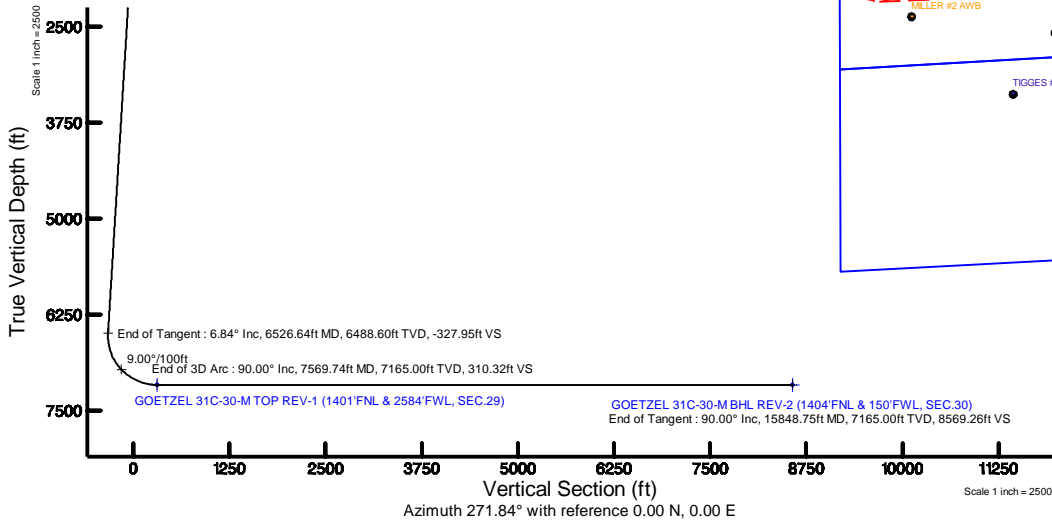
Facility Name				Grid East (US ft)	Grid North (US ft)	Latitude	Longitude
SEC 29-T06N-R66W				3194449.646	1411672.008	40°27'40.817"N	104°48'54.259"W
Slot	Local N (ft)	Local E (ft)	Grid East (US ft)	Grid North (US ft)	Latitude	Longitude	
SLOT#07 GOETZEL 31C-30-M(1993FNL & 2446FEL, SEC.29)	-180.03	-1.08	3194449.983	1411491.979	40°27'39.038"N	104°48'54.273"W	
PROPTETO 12 (4) (RKB) to Mud line (N Slot: SLOT#07 GOETZEL 31C-30-M(1993FNL & 2446FEL, SEC.29))						4732ft	
Mean Sea Level to Mud line (N Slot: SLOT#07 GOETZEL 31C-30-M(1993FNL & 2446FEL, SEC.29))						0ft	
PROPTETO 12 (4) (RKB) to Mean Sea Level						4732ft	

MD (ft)	Inc (°)	Az (°)	TVD (ft)	Local N (ft)	Local E (ft)	Grid East (US ft)	Grid North (US ft)	Latitude	Longitude
4.00	0.000	32.475	4.00	0.00	0.00	3194449.98	1411491.98	40°27'39.038"N	104°48'04.273"W



BGGM (1900.0 to 2018.0) Dip: 66.92° Field: 52499.6 nT
Magnetic North is 8.43 degrees East of True North (at 2/22/2017)

To correct azimuth from Magnetic to True add 8.43 degrees



Design Comment	MD (ft)	Inc (°)	Az (°)	TVD (ft)	Local N (ft)	Local E (ft)	DLS (°/100ft)	VS (ft)
Tie On	4.00	0.000	32.475	4.00	0.00	0.00	0.00	0.00
End of Tangent	950.00	0.000	32.475	950.00	0.00	0.00	0.00	0.00
End of Build	1291.89	6.838	32.475	1291.08	17.19	10.94	2.00	-10.38
End of Tangent	6526.64	6.838	32.475	6488.60	542.98	345.58	0.00	-327.95
End of 3D Arc	7569.74	90.000	267.852	7165.00	585.86	-291.64	9.00	310.32
End of Tangent	15848.75	90.000	267.852	7165.00	275.49	-8564.83	0.00	8569.26

Start MD (ft)	End MD (ft)	Tool	Model	Log Name/Comment	Wellbore
4.00	1700.00	BHI NaviTrak	Custom BHI NaviTrak (Standard Rotating) (Rockies 0.03Gt model)		GOETZEL 31C-30-M PWB
1700.00	15849.00	BHI AutoTrak Curve	Custom BHI AutoTrak Curve (IFR1, Short) (Rockies 0.03Gt model)		GOETZEL 31C-30-M PWB

Name	MD (ft)	TVO (ft)	Local N (ft)	Local E (ft)	Grid East (US N)	Grid North (US N)	Latitude	Longitude
SEC.29-T06N-R66W NORTHERN		-16.00	180.01	1.10	3194449.66	1411671.99	40°27'40.817"N	104°48'04.259"W
SEC.29-T06N-R66W SOUTHERN		-16.00	180.01	1.10	3194449.66	1411671.99	40°27'40.817"N	104°48'04.259"W
SEC.30-T06N-R66W NORTHERN		-16.00	180.01	1.10	3194449.66	1411671.99	40°27'40.817"N	104°48'04.259"W
SEC.30-T06N-R66W SOUTHERN		-16.00	180.01	1.10	3194449.66	1411671.99	40°27'40.817"N	104°48'04.259"W
GOETZEL 31C-30-MBHL REV.1 (1404FNL & 510FWL SEC.30)		7165.00	294.68	-8204.74	3186243.49	1411721.38	40°27'41.306"N	104°49'50.419"W
GOETZEL 31C-30-MBHL REV.2 (1404FNL & 150FWL SEC.30)	15848.75	7165.00	275.49	-8564.83	3185983.58	1411699.96	40°27'41.746"N	104°49'55.078"W
GOETZEL 31C-30-MBHL REV.1 (1401FNL & 2584FWL SEC.29)	7589.74	7165.00	585.86	-291.64	3194310.75	1420075.50	40°27'44.827"N	104°48'08.046"W



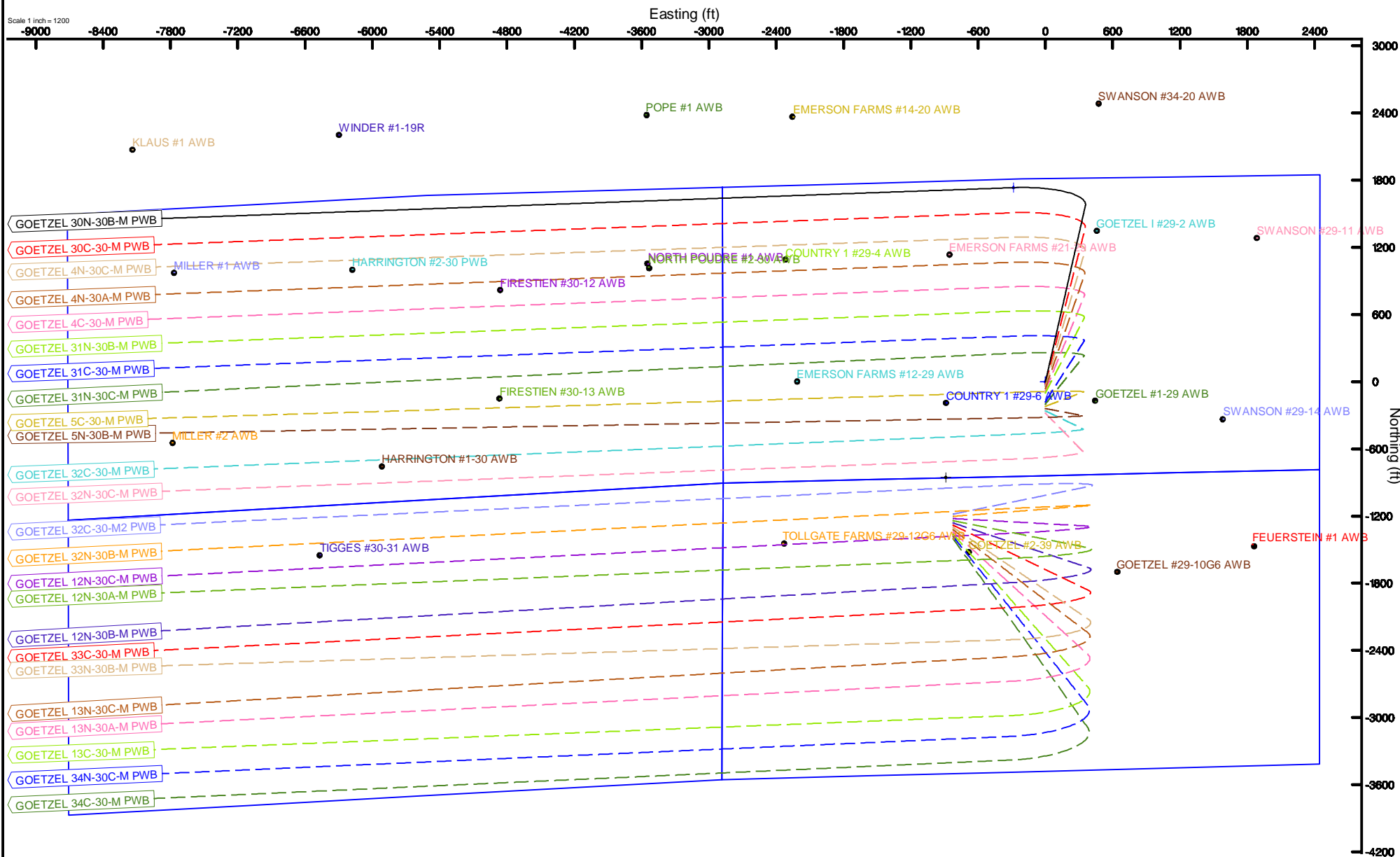
SYNERGY RESOURCES CORPORATION

Location: COLORADO Slot: SLOT#01 GOETZEL 30N-30B-M (1813'FNL & 2445'FEL, SEC.29)
Field: WELD COUNTY (NAD83,TRUE NORTH) Well: GOETZEL 30N-30B-M
Facility: SEC.29-T06N-R66W Wellbore: GOETZEL 30N-30B-M-PWB



BGGM (1900.0 to 2018.0) Dip: 66.92° Field: 52499.6 nT
Magnetic North is 8.43 degrees East of True North (at 2/22/2017)

To correct azimuth from Magnetic to True add 8.43 degrees



GOETZEL_31C-30-M_PWP__REV-C.0_.las

~VERSION INFORMATION

VERS. 2.0 : CWLS LOG ASCII STANDARD-VERSION 2.0
 WRAP. NO : ASCII DATA SECTION CONTAINS ONE ROW PER WELLPATH STATION

~WELL INFORMATION

#MNEM	.UNITS	DATA	:DESCRIPTION
#----	.-----	----	:-----
STRT	.ft	0.00	:START MD
STOP	.ft	15848.75	:STOP MD
STEP	.ft	0.0	:STEP (non-uniform increment)
NULL	.	-999.99	:NULL
COMP	.	SYNERGY RESOURCES CORPORATION	:OPERATOR
WELL	.	GOETZEL 31C-30-M	:WELL
FLD	.	WELD COUNTY (NAD83,TRUE NORTH)	:FIELD
LOC	.	COLORADO	:AREA (aka: Location)
CNTY	.	N/A	:COUNTY
STAT	.	N/A	:STATE
CTRY	.	N/A	:COUNTRY
SRVC	.	Baker Hughes	:CONTRACTOR
DATE	.	11/10/2016	:LOG REV DATE
API	.		:API NUMBER

~OTHER INFORMATION

#Software: wellArchitect(R) Version 5.0

#MNEM	.UNITS	DATA	:DESCRIPTION
#----	.-----	----	:-----
WPTYPE	.	PLANNED WELLPATH	:WELLPATH TYPE
FACILITY	.	SEC.29-T06N-R66W	:FACILITY
SLOT	.	SLOT#07 GOETZEL 31C-30-M (1993'FNL & 2446'FEL, SEC.29)	:SLOT
WELLBORE	.	GOETZEL 31C-30-M PWB	:WELLBORE
WELLPATH	.	GOETZEL 31C-30-M PWP (REV-C.0)	:WELLPATH
MDREFPT	.	PROPETRO 12 (4') (RKB)	:MD REFERENCE POINT
TVDREFPT	.	PROPETRO 12 (4') (RKB)	:TVD REFERENCE POINT
LCLREFPT	.	Slot	:LOCAL COORDINATE REFERENCE PT
VSAZIMUTH	.deg	271.84	:VERTICAL SECTION AZIMUTH
VSORIGN	.ft	0.00	:VERTICAL SECTION ORIGIN NORTH
VSORIGE	.ft	0.00	:VERTICAL SECTION ORIGIN EAST

~CURVE (WELLPATH) INFORMATION

#MNEM	.UNITS	:DESCRIPTION
#----	.-----	:-----
DEPT	.ft	:MEASURED DEPTH
INC	.deg	:INCLINATION
AZI	.deg	:AZIMUTH

GOETZEL_31C-30-M_PWP__REV-C.0_.las

TVD .ft :TRUE VERTICAL DEPTH
 SECT .ft :CROSS SECTION (CURTAIN/VERTICAL)
 LOCALN .ft :LOCAL NORTH
 LOCALE .ft :LOCAL EAST
 LAT .deg :LATITUDE
 LONG .deg :LONGITUDE
 DLS .deg/100ft :DOGLEG SEVERITY

~ASCII DATA

0.00	0.00	32.48	0.00	0.00	0.00	0.00	40.4608439	-104.8011869	0.00
4.00	0.00	32.48	4.00	0.00	0.00	0.00	40.4608439	-104.8011869	0.00
104.00	0.00	32.48	104.00	0.00	0.00	0.00	40.4608439	-104.8011869	0.00
204.00	0.00	32.48	204.00	0.00	0.00	0.00	40.4608439	-104.8011869	0.00
304.00	0.00	32.48	304.00	0.00	0.00	0.00	40.4608439	-104.8011869	0.00
404.00	0.00	32.48	404.00	0.00	0.00	0.00	40.4608439	-104.8011869	0.00
504.00	0.00	32.48	504.00	0.00	0.00	0.00	40.4608439	-104.8011869	0.00
604.00	0.00	32.48	604.00	0.00	0.00	0.00	40.4608439	-104.8011869	0.00
704.00	0.00	32.48	704.00	0.00	0.00	0.00	40.4608439	-104.8011869	0.00
804.00	0.00	32.48	804.00	0.00	0.00	0.00	40.4608439	-104.8011869	0.00
904.00	0.00	32.48	904.00	0.00	0.00	0.00	40.4608439	-104.8011869	0.00
950.00	0.00	32.48	950.00	0.00	0.00	0.00	40.4608439	-104.8011869	0.00
1004.00	1.08	32.48	1004.00	-0.26	0.43	0.27	40.4608451	-104.8011860	2.00
1104.00	3.08	32.48	1103.93	-2.11	3.49	2.22	40.4608535	-104.8011790	2.00
1204.00	5.08	32.48	1203.67	-5.73	9.49	6.04	40.4608699	-104.8011652	2.00
1291.89	6.84	32.48	1291.08	-10.38	17.19	10.94	40.4608911	-104.8011476	2.00
1304.00	6.84	32.48	1303.10	-11.12	18.41	11.72	40.4608944	-104.8011448	0.00
1404.00	6.84	32.48	1402.39	-17.18	28.45	18.11	40.4609220	-104.8011219	0.00
1504.00	6.84	32.48	1501.68	-23.25	38.49	24.50	40.4609496	-104.8010989	0.00
1604.00	6.84	32.48	1600.97	-29.32	48.54	30.89	40.4609771	-104.8010759	0.00
1704.00	6.84	32.48	1700.26	-35.38	58.58	37.29	40.4610047	-104.8010530	0.00
1804.00	6.84	32.48	1799.55	-41.45	68.63	43.68	40.4610323	-104.8010300	0.00
1904.00	6.84	32.48	1898.84	-47.52	78.67	50.07	40.4610598	-104.8010070	0.00
2004.00	6.84	32.48	1998.12	-53.58	88.72	56.46	40.4610874	-104.8009840	0.00
2104.00	6.84	32.48	2097.41	-59.65	98.76	62.86	40.4611150	-104.8009611	0.00
2204.00	6.84	32.48	2196.70	-65.72	108.80	69.25	40.4611425	-104.8009381	0.00
2304.00	6.84	32.48	2295.99	-71.78	118.85	75.64	40.4611701	-104.8009151	0.00
2404.00	6.84	32.48	2395.28	-77.85	128.89	82.03	40.4611977	-104.8008921	0.00
2504.00	6.84	32.48	2494.57	-83.91	138.94	88.43	40.4612253	-104.8008692	0.00
2604.00	6.84	32.48	2593.86	-89.98	148.98	94.82	40.4612528	-104.8008462	0.00
2704.00	6.84	32.48	2693.14	-96.05	159.02	101.21	40.4612804	-104.8008232	0.00
2804.00	6.84	32.48	2792.43	-102.11	169.07	107.60	40.4613080	-104.8008003	0.00
2904.00	6.84	32.48	2891.72	-108.18	179.11	114.00	40.4613355	-104.8007773	0.00
3004.00	6.84	32.48	2991.01	-114.25	189.16	120.39	40.4613631	-104.8007543	0.00
3104.00	6.84	32.48	3090.30	-120.31	199.20	126.78	40.4613907	-104.8007313	0.00

GOETZEL_31C-30-M_PWP_REV-C.0_.las

3204.00	6.84	32.48	3189.59	-126.38	209.25	133.18	40.4614182	-104.8007084	0.00
3304.00	6.84	32.48	3288.88	-132.45	219.29	139.57	40.4614458	-104.8006854	0.00
3404.00	6.84	32.48	3388.17	-138.51	229.33	145.96	40.4614734	-104.8006624	0.00
3504.00	6.84	32.48	3487.45	-144.58	239.38	152.35	40.4615009	-104.8006394	0.00
3604.00	6.84	32.48	3586.74	-150.65	249.42	158.75	40.4615285	-104.8006165	0.00
3704.00	6.84	32.48	3686.03	-156.71	259.47	165.14	40.4615561	-104.8005935	0.00
3804.00	6.84	32.48	3785.32	-162.78	269.51	171.53	40.4615837	-104.8005705	0.00
3904.00	6.84	32.48	3884.61	-168.84	279.55	177.92	40.4616112	-104.8005475	0.00
4004.00	6.84	32.48	3983.90	-174.91	289.60	184.32	40.4616388	-104.8005246	0.00
4104.00	6.84	32.48	4083.19	-180.98	299.64	190.71	40.4616664	-104.8005016	0.00
4204.00	6.84	32.48	4182.48	-187.04	309.69	197.10	40.4616939	-104.8004786	0.00
4304.00	6.84	32.48	4281.76	-193.11	319.73	203.49	40.4617215	-104.8004557	0.00
4404.00	6.84	32.48	4381.05	-199.18	329.77	209.89	40.4617491	-104.8004327	0.00
4504.00	6.84	32.48	4480.34	-205.24	339.82	216.28	40.4617766	-104.8004097	0.00
4604.00	6.84	32.48	4579.63	-211.31	349.86	222.67	40.4618042	-104.8003867	0.00
4704.00	6.84	32.48	4678.92	-217.38	359.91	229.07	40.4618318	-104.8003638	0.00
4804.00	6.84	32.48	4778.21	-223.44	369.95	235.46	40.4618594	-104.8003408	0.00
4904.00	6.84	32.48	4877.50	-229.51	380.00	241.85	40.4618869	-104.8003178	0.00
5004.00	6.84	32.48	4976.79	-235.58	390.04	248.24	40.4619145	-104.8002948	0.00
5104.00	6.84	32.48	5076.07	-241.64	400.08	254.64	40.4619421	-104.8002719	0.00
5204.00	6.84	32.48	5175.36	-247.71	410.13	261.03	40.4619696	-104.8002489	0.00
5304.00	6.84	32.48	5274.65	-253.77	420.17	267.42	40.4619972	-104.8002259	0.00
5404.00	6.84	32.48	5373.94	-259.84	430.22	273.81	40.4620248	-104.8002029	0.00
5504.00	6.84	32.48	5473.23	-265.91	440.26	280.21	40.4620523	-104.8001800	0.00
5604.00	6.84	32.48	5572.52	-271.97	450.30	286.60	40.4620799	-104.8001570	0.00
5704.00	6.84	32.48	5671.81	-278.04	460.35	292.99	40.4621075	-104.8001340	0.00
5804.00	6.84	32.48	5771.10	-284.11	470.39	299.38	40.4621351	-104.8001111	0.00
5904.00	6.84	32.48	5870.38	-290.17	480.44	305.78	40.4621626	-104.8000881	0.00
6004.00	6.84	32.48	5969.67	-296.24	490.48	312.17	40.4621902	-104.8000651	0.00
6104.00	6.84	32.48	6068.96	-302.31	500.53	318.56	40.4622178	-104.8000421	0.00
6204.00	6.84	32.48	6168.25	-308.37	510.57	324.95	40.4622453	-104.8000192	0.00
6304.00	6.84	32.48	6267.54	-314.44	520.61	331.35	40.4622729	-104.7999962	0.00
6404.00	6.84	32.48	6366.83	-320.51	530.66	337.74	40.4623005	-104.7999732	0.00
6504.00	6.84	32.48	6466.12	-326.57	540.70	344.13	40.4623280	-104.7999502	0.00
6526.64	6.84	32.48	6488.60	-327.95	542.98	345.58	40.4623343	-104.7999450	0.00
6604.00	6.42	329.11	6565.53	-327.95	550.58	345.83	40.4623552	-104.7999441	9.00
6704.00	13.32	292.49	6664.08	-314.13	559.81	332.29	40.4623805	-104.7999928	9.00
6804.00	21.79	282.14	6759.36	-285.03	568.13	303.45	40.4624033	-104.8000964	9.00
6904.00	30.56	277.47	6849.02	-241.38	575.36	260.01	40.4624232	-104.8002525	9.00
7004.00	39.42	274.75	6930.87	-184.25	581.30	203.05	40.4624395	-104.8004573	9.00
7104.00	48.33	272.89	7002.89	-115.06	585.82	133.96	40.4624519	-104.8007055	9.00
7204.00	57.26	271.49	7063.29	-35.49	588.80	54.45	40.4624601	-104.8009913	9.00
7304.00	66.21	270.35	7110.60	52.48	590.17	-33.52	40.4624638	-104.8013074	9.00
7404.00	75.16	269.35	7143.65	146.69	589.90	-127.80	40.4624631	-104.8016462	9.00

GOETZEL_31C-30-M_PWP_REV-C.0_.las									
7504.00	84.11	268.44	7161.62	244.83	587.99	-226.04	40.4624578	-104.8019993	9.00
7569.74	90.00	267.85	7165.00	310.32	585.86	-291.64	40.4624520	-104.8022350	9.00
7604.00	90.00	267.85	7165.00	344.49	584.58	-325.87	40.4624485	-104.8023580	0.00
7704.00	90.00	267.85	7165.00	444.25	580.83	-425.80	40.4624382	-104.8027171	0.00
7804.00	90.00	267.85	7165.00	544.01	577.08	-525.73	40.4624279	-104.8030763	0.00
7904.00	90.00	267.85	7165.00	643.77	573.33	-625.66	40.4624176	-104.8034354	0.00
8004.00	90.00	267.85	7165.00	743.52	569.58	-725.59	40.4624073	-104.8037945	0.00
8104.00	90.00	267.85	7165.00	843.28	565.83	-825.52	40.4623970	-104.8041536	0.00
8204.00	90.00	267.85	7165.00	943.04	562.08	-925.45	40.4623867	-104.8045127	0.00
8304.00	90.00	267.85	7165.00	1042.80	558.34	-1025.38	40.4623764	-104.8048718	0.00
8404.00	90.00	267.85	7165.00	1142.55	554.59	-1125.31	40.4623661	-104.8052310	0.00
8504.00	90.00	267.85	7165.00	1242.31	550.84	-1225.24	40.4623558	-104.8055901	0.00
8604.00	90.00	267.85	7165.00	1342.07	547.09	-1325.17	40.4623455	-104.8059492	0.00
8704.00	90.00	267.85	7165.00	1441.83	543.34	-1425.10	40.4623352	-104.8063083	0.00
8804.00	90.00	267.85	7165.00	1541.58	539.59	-1525.03	40.4623249	-104.8066674	0.00
8904.00	90.00	267.85	7165.00	1641.34	535.84	-1624.96	40.4623146	-104.8070265	0.00
9004.00	90.00	267.85	7165.00	1741.10	532.09	-1724.89	40.4623043	-104.8073857	0.00
9104.00	90.00	267.85	7165.00	1840.86	528.34	-1824.82	40.4622939	-104.8077448	0.00
9204.00	90.00	267.85	7165.00	1940.61	524.60	-1924.74	40.4622836	-104.8081039	0.00
9304.00	90.00	267.85	7165.00	2040.37	520.85	-2024.67	40.4622733	-104.8084630	0.00
9404.00	90.00	267.85	7165.00	2140.13	517.10	-2124.60	40.4622630	-104.8088221	0.00
9504.00	90.00	267.85	7165.00	2239.89	513.35	-2224.53	40.4622527	-104.8091812	0.00
9604.00	90.00	267.85	7165.00	2339.65	509.60	-2324.46	40.4622424	-104.8095404	0.00
9704.00	90.00	267.85	7165.00	2439.40	505.85	-2424.39	40.4622321	-104.8098995	0.00
9804.00	90.00	267.85	7165.00	2539.16	502.10	-2524.32	40.4622217	-104.8102586	0.00
9904.00	90.00	267.85	7165.00	2638.92	498.35	-2624.25	40.4622114	-104.8106177	0.00
10004.00	90.00	267.85	7165.00	2738.68	494.61	-2724.18	40.4622011	-104.8109768	0.00
10104.00	90.00	267.85	7165.00	2838.43	490.86	-2824.11	40.4621908	-104.8113359	0.00
10204.00	90.00	267.85	7165.00	2938.19	487.11	-2924.04	40.4621805	-104.8116950	0.00
10304.00	90.00	267.85	7165.00	3037.95	483.36	-3023.97	40.4621701	-104.8120542	0.00
10404.00	90.00	267.85	7165.00	3137.71	479.61	-3123.90	40.4621598	-104.8124133	0.00
10504.00	90.00	267.85	7165.00	3237.46	475.86	-3223.83	40.4621495	-104.8127724	0.00
10604.00	90.00	267.85	7165.00	3337.22	472.11	-3323.76	40.4621392	-104.8131315	0.00
10704.00	90.00	267.85	7165.00	3436.98	468.36	-3423.69	40.4621288	-104.8134906	0.00
10804.00	90.00	267.85	7165.00	3536.74	464.61	-3523.62	40.4621185	-104.8138497	0.00
10904.00	90.00	267.85	7165.00	3636.49	460.87	-3623.55	40.4621082	-104.8142088	0.00
11004.00	90.00	267.85	7165.00	3736.25	457.12	-3723.48	40.4620978	-104.8145680	0.00
11104.00	90.00	267.85	7165.00	3836.01	453.37	-3823.41	40.4620875	-104.8149271	0.00
11204.00	90.00	267.85	7165.00	3935.77	449.62	-3923.34	40.4620772	-104.8152862	0.00
11304.00	90.00	267.85	7165.00	4035.52	445.87	-4023.27	40.4620668	-104.8156453	0.00
11404.00	90.00	267.85	7165.00	4135.28	442.12	-4123.20	40.4620565	-104.8160044	0.00
11504.00	90.00	267.85	7165.00	4235.04	438.37	-4223.13	40.4620462	-104.8163635	0.00
11604.00	90.00	267.85	7165.00	4334.80	434.62	-4323.06	40.4620358	-104.8167226	0.00
11704.00	90.00	267.85	7165.00	4434.55	430.87	-4422.99	40.4620255	-104.8170817	0.00

GOETZEL_31C-30-M_PWP_REV-C.0_.las									
11804.00	90.00	267.85	7165.00	4534.31	427.13	-4522.92	40.4620152	-104.8174409	0.00
11904.00	90.00	267.85	7165.00	4634.07	423.38	-4622.85	40.4620048	-104.8178000	0.00
12004.00	90.00	267.85	7165.00	4733.83	419.63	-4722.78	40.4619945	-104.8181591	0.00
12104.00	90.00	267.85	7165.00	4833.58	415.88	-4822.71	40.4619841	-104.8185182	0.00
12204.00	90.00	267.85	7165.00	4933.34	412.13	-4922.64	40.4619738	-104.8188773	0.00
12304.00	90.00	267.85	7165.00	5033.10	408.38	-5022.57	40.4619634	-104.8192364	0.00
12404.00	90.00	267.85	7165.00	5132.86	404.63	-5122.50	40.4619531	-104.8195955	0.00
12504.00	90.00	267.85	7165.00	5232.61	400.88	-5222.42	40.4619427	-104.8199546	0.00
12604.00	90.00	267.85	7165.00	5332.37	397.13	-5322.35	40.4619324	-104.8203138	0.00
12704.00	90.00	267.85	7165.00	5432.13	393.39	-5422.28	40.4619220	-104.8206729	0.00
12804.00	90.00	267.85	7165.00	5531.89	389.64	-5522.21	40.4619117	-104.8210320	0.00
12904.00	90.00	267.85	7165.00	5631.64	385.89	-5622.14	40.4619013	-104.8213911	0.00
13004.00	90.00	267.85	7165.00	5731.40	382.14	-5722.07	40.4618910	-104.8217502	0.00
13104.00	90.00	267.85	7165.00	5831.16	378.39	-5822.00	40.4618806	-104.8221093	0.00
13204.00	90.00	267.85	7165.00	5930.92	374.64	-5921.93	40.4618703	-104.8224684	0.00
13304.00	90.00	267.85	7165.00	6030.67	370.89	-6021.86	40.4618599	-104.8228275	0.00
13404.00	90.00	267.85	7165.00	6130.43	367.14	-6121.79	40.4618496	-104.8231867	0.00
13504.00	90.00	267.85	7165.00	6230.19	363.39	-6221.72	40.4618392	-104.8235458	0.00
13604.00	90.00	267.85	7165.00	6329.95	359.65	-6321.65	40.4618288	-104.8239049	0.00
13704.00	90.00	267.85	7165.00	6429.70	355.90	-6421.58	40.4618185	-104.8242640	0.00
13804.00	90.00	267.85	7165.00	6529.46	352.15	-6521.51	40.4618081	-104.8246231	0.00
13904.00	90.00	267.85	7165.00	6629.22	348.40	-6621.44	40.4617978	-104.8249822	0.00
14004.00	90.00	267.85	7165.00	6728.98	344.65	-6721.37	40.4617874	-104.8253413	0.00
14104.00	90.00	267.85	7165.00	6828.73	340.90	-6821.30	40.4617770	-104.8257004	0.00
14204.00	90.00	267.85	7165.00	6928.49	337.15	-6921.23	40.4617667	-104.8260595	0.00
14304.00	90.00	267.85	7165.00	7028.25	333.40	-7021.16	40.4617563	-104.8264187	0.00
14404.00	90.00	267.85	7165.00	7128.01	329.65	-7121.09	40.4617459	-104.8267778	0.00
14504.00	90.00	267.85	7165.00	7227.76	325.91	-7221.02	40.4617356	-104.8271369	0.00
14604.00	90.00	267.85	7165.00	7327.52	322.16	-7320.95	40.4617252	-104.8274960	0.00
14704.00	90.00	267.85	7165.00	7427.28	318.41	-7420.88	40.4617148	-104.8278551	0.00
14804.00	90.00	267.85	7165.00	7527.04	314.66	-7520.81	40.4617044	-104.8282142	0.00
14904.00	90.00	267.85	7165.00	7626.79	310.91	-7620.74	40.4616941	-104.8285733	0.00
15004.00	90.00	267.85	7165.00	7726.55	307.16	-7720.67	40.4616837	-104.8289324	0.00
15104.00	90.00	267.85	7165.00	7826.31	303.41	-7820.60	40.4616733	-104.8292915	0.00
15204.00	90.00	267.85	7165.00	7926.07	299.66	-7920.53	40.4616629	-104.8296506	0.00
15304.00	90.00	267.85	7165.00	8025.82	295.91	-8020.46	40.4616526	-104.8300097	0.00
15404.00	90.00	267.85	7165.00	8125.58	292.17	-8120.39	40.4616422	-104.8303689	0.00
15504.00	90.00	267.85	7165.00	8225.34	288.42	-8220.32	40.4616318	-104.8307280	0.00
15604.00	90.00	267.85	7165.00	8325.10	284.67	-8320.25	40.4616214	-104.8310871	0.00
15704.00	90.00	267.85	7165.00	8424.85	280.92	-8420.18	40.4616110	-104.8314462	0.00
15804.00	90.00	267.85	7165.00	8524.61	277.17	-8520.11	40.4616006	-104.8318053	0.00
15848.75	90.00	267.85	7165.00	8569.26	275.49	-8564.83	40.4615960	-104.8319660	0.00



Planned Wellpath Report

GOETZEL 31C-30-M PWP (REV-C.0)

Page 1 of 8



REFERENCE WELLPATH IDENTIFICATION

Operator	SYNERGY RESOURCES CORPORATION	Slot	SLOT#07 GOETZEL 31C-30-M (1993'FNL & 2446'FEL, SEC.29)
Area	COLORADO	Well	GOETZEL 31C-30-M
Field	WELD COUNTY (NAD83,TRUE NORTH)	Wellbore	GOETZEL 31C-30-M PWB
Facility	SEC.29-T06N-R66W		

REPORT SETUP INFORMATION

Projection System	NAD83 / Lambert Colorado SP, Northern Zone (501), US feet	Software System	WellArchitect® 5.0
North Reference	True	User	Wagnjam
Scale	0.999964	Report Generated	2/24/2017 at 5:22:02 PM
Convergence at slot	0.46° East	Database/Source file	WA_DEN_Denver_Defn/GOETZEL_31C-30-M_PWP__REV-C.0_.xml

WELLPATH LOCATION

	Local coordinates		Grid coordinates		Geographic coordinates	
	North[ft]	East[ft]	Easting[US ft]	Northing[US ft]	Latitude	Longitude
Slot Location	-180.03	-1.08	3194449.98	1411491.98	40°27'39.038"N	104°48'04.273"W
Facility Reference Pt			3194449.65	1411672.01	40°27'40.817"N	104°48'04.259"W
Field Reference Pt			3171284.48	1426358.81	40°30'07.643"N	104°53'02.634"W

WELLPATH DATUM

Calculation method	Minimum curvature	PROPETRO 12 (4') (RKB) to Facility Vertical Datum	4732.00ft
Horizontal Reference Pt	Slot	PROPETRO 12 (4') (RKB) to Mean Sea Level	4732.00ft
Vertical Reference Pt	PROPETRO 12 (4') (RKB)	PROPETRO 12 (4') (RKB) to Mud Line at Slot (SLOT#07 GOETZEL 31C-30-M (1993'FNL & 2446'FEL, SEC.29))	4732.00ft
MD Reference Pt	PROPETRO 12 (4') (RKB)	Section Origin	N 0.00, E 0.00 ft
Field Vertical Reference	Mean Sea Level	Section Azimuth	271.84°



Planned Wellpath Report

GOETZEL 31C-30-M PWP (REV-C.0)

Page 2 of 8



REFERENCE WELLPATH IDENTIFICATION

Operator	SYNERGY RESOURCES CORPORATION	Slot	SLOT#07 GOETZEL 31C-30-M (1993'FNL & 2446'FEL, SEC.29)
Area	COLORADO	Well	GOETZEL 31C-30-M
Field	WELD COUNTY (NAD83,TRUE NORTH)	Wellbore	GOETZEL 31C-30-M PWB
Facility	SEC.29-T06N-R66W		

WELLPATH DATA (165 stations) † = interpolated/extrapolated station

MD [ft]	Inclination [°]	Azimuth [°]	TVD [ft]	Vert Sect [ft]	North [ft]	East [ft]	DLS [°/100ft]	Comments
0.00†	0.000	32.475	0.00	0.00	0.00	0.00	0.00	
4.00	0.000	32.475	4.00	0.00	0.00	0.00	0.00	Tie On
104.00†	0.000	32.475	104.00	0.00	0.00	0.00	0.00	
204.00†	0.000	32.475	204.00	0.00	0.00	0.00	0.00	
304.00†	0.000	32.475	304.00	0.00	0.00	0.00	0.00	
404.00†	0.000	32.475	404.00	0.00	0.00	0.00	0.00	
504.00†	0.000	32.475	504.00	0.00	0.00	0.00	0.00	
604.00†	0.000	32.475	604.00	0.00	0.00	0.00	0.00	
704.00†	0.000	32.475	704.00	0.00	0.00	0.00	0.00	
804.00†	0.000	32.475	804.00	0.00	0.00	0.00	0.00	
904.00†	0.000	32.475	904.00	0.00	0.00	0.00	0.00	
950.00	0.000	32.475	950.00	0.00	0.00	0.00	0.00	End of Tangent
1004.00†	1.080	32.475	1004.00	-0.26	0.43	0.27	2.00	
1104.00†	3.080	32.475	1103.93	-2.11	3.49	2.22	2.00	
1204.00†	5.080	32.475	1203.67	-5.73	9.49	6.04	2.00	
1291.89	6.838	32.475	1291.08	-10.38	17.19	10.94	2.00	End of Build
1304.00†	6.838	32.475	1303.10	-11.12	18.41	11.72	0.00	
1404.00†	6.838	32.475	1402.39	-17.18	28.45	18.11	0.00	
1504.00†	6.838	32.475	1501.68	-23.25	38.49	24.50	0.00	
1604.00†	6.838	32.475	1600.97	-29.32	48.54	30.89	0.00	
1704.00†	6.838	32.475	1700.26	-35.38	58.58	37.29	0.00	
1804.00†	6.838	32.475	1799.55	-41.45	68.63	43.68	0.00	
1904.00†	6.838	32.475	1898.84	-47.52	78.67	50.07	0.00	
2004.00†	6.838	32.475	1998.12	-53.58	88.72	56.46	0.00	
2104.00†	6.838	32.475	2097.41	-59.65	98.76	62.86	0.00	
2204.00†	6.838	32.475	2196.70	-65.72	108.80	69.25	0.00	
2304.00†	6.838	32.475	2295.99	-71.78	118.85	75.64	0.00	
2404.00†	6.838	32.475	2395.28	-77.85	128.89	82.03	0.00	
2504.00†	6.838	32.475	2494.57	-83.91	138.94	88.43	0.00	
2604.00†	6.838	32.475	2593.86	-89.98	148.98	94.82	0.00	



Planned Wellpath Report

GOETZEL 31C-30-M PWP (REV-C.0)

Page 3 of 8



REFERENCE WELLPATH IDENTIFICATION

Operator	SYNERGY RESOURCES CORPORATION	Slot	SLOT#07 GOETZEL 31C-30-M (1993'FNL & 2446'FEL, SEC.29)
Area	COLORADO	Well	GOETZEL 31C-30-M
Field	WELD COUNTY (NAD83,TRUE NORTH)	Wellbore	GOETZEL 31C-30-M PWB
Facility	SEC.29-T06N-R66W		

WELLPATH DATA (165 stations) † = interpolated/extrapolated station

MD [ft]	Inclination [°]	Azimuth [°]	TVD [ft]	Vert Sect [ft]	North [ft]	East [ft]	DLS [°/100ft]	Comments
2704.00†	6.838	32.475	2693.14	-96.05	159.02	101.21	0.00	
2804.00†	6.838	32.475	2792.43	-102.11	169.07	107.60	0.00	
2904.00†	6.838	32.475	2891.72	-108.18	179.11	114.00	0.00	
3004.00†	6.838	32.475	2991.01	-114.25	189.16	120.39	0.00	
3104.00†	6.838	32.475	3090.30	-120.31	199.20	126.78	0.00	
3204.00†	6.838	32.475	3189.59	-126.38	209.25	133.18	0.00	
3304.00†	6.838	32.475	3288.88	-132.45	219.29	139.57	0.00	
3404.00†	6.838	32.475	3388.17	-138.51	229.33	145.96	0.00	
3504.00†	6.838	32.475	3487.45	-144.58	239.38	152.35	0.00	
3604.00†	6.838	32.475	3586.74	-150.65	249.42	158.75	0.00	
3704.00†	6.838	32.475	3686.03	-156.71	259.47	165.14	0.00	
3804.00†	6.838	32.475	3785.32	-162.78	269.51	171.53	0.00	
3904.00†	6.838	32.475	3884.61	-168.84	279.55	177.92	0.00	
4004.00†	6.838	32.475	3983.90	-174.91	289.60	184.32	0.00	
4104.00†	6.838	32.475	4083.19	-180.98	299.64	190.71	0.00	
4204.00†	6.838	32.475	4182.48	-187.04	309.69	197.10	0.00	
4304.00†	6.838	32.475	4281.76	-193.11	319.73	203.49	0.00	
4404.00†	6.838	32.475	4381.05	-199.18	329.77	209.89	0.00	
4504.00†	6.838	32.475	4480.34	-205.24	339.82	216.28	0.00	
4604.00†	6.838	32.475	4579.63	-211.31	349.86	222.67	0.00	
4704.00†	6.838	32.475	4678.92	-217.38	359.91	229.07	0.00	
4804.00†	6.838	32.475	4778.21	-223.44	369.95	235.46	0.00	
4904.00†	6.838	32.475	4877.50	-229.51	380.00	241.85	0.00	
5004.00†	6.838	32.475	4976.79	-235.58	390.04	248.24	0.00	
5104.00†	6.838	32.475	5076.07	-241.64	400.08	254.64	0.00	
5204.00†	6.838	32.475	5175.36	-247.71	410.13	261.03	0.00	
5304.00†	6.838	32.475	5274.65	-253.77	420.17	267.42	0.00	
5404.00†	6.838	32.475	5373.94	-259.84	430.22	273.81	0.00	
5504.00†	6.838	32.475	5473.23	-265.91	440.26	280.21	0.00	
5604.00†	6.838	32.475	5572.52	-271.97	450.30	286.60	0.00	



Planned Wellpath Report

GOETZEL 31C-30-M PWP (REV-C.0)

Page 4 of 8



REFERENCE WELLPATH IDENTIFICATION

Operator	SYNERGY RESOURCES CORPORATION	Slot	SLOT#07 GOETZEL 31C-30-M (1993'FNL & 2446'FEL, SEC.29)
Area	COLORADO	Well	GOETZEL 31C-30-M
Field	WELD COUNTY (NAD83,TRUE NORTH)	Wellbore	GOETZEL 31C-30-M PWB
Facility	SEC.29-T06N-R66W		

WELLPATH DATA (165 stations) † = interpolated/extrapolated station

MD [ft]	Inclination [°]	Azimuth [°]	TVD [ft]	Vert Sect [ft]	North [ft]	East [ft]	DLS [°/100ft]	Comments
5704.00†	6.838	32.475	5671.81	-278.04	460.35	292.99	0.00	
5804.00†	6.838	32.475	5771.10	-284.11	470.39	299.38	0.00	
5904.00†	6.838	32.475	5870.38	-290.17	480.44	305.78	0.00	
6004.00†	6.838	32.475	5969.67	-296.24	490.48	312.17	0.00	
6104.00†	6.838	32.475	6068.96	-302.31	500.53	318.56	0.00	
6204.00†	6.838	32.475	6168.25	-308.37	510.57	324.95	0.00	
6304.00†	6.838	32.475	6267.54	-314.44	520.61	331.35	0.00	
6404.00†	6.838	32.475	6366.83	-320.51	530.66	337.74	0.00	
6504.00†	6.838	32.475	6466.12	-326.57	540.70	344.13	0.00	
6526.64	6.838	32.475	6488.60	-327.95	542.98	345.58	0.00	End of Tangent
6604.00†	6.421	329.107	6565.53	-327.95	550.58	345.83	9.00	
6704.00†	13.315	292.493	6664.08	-314.13	559.81	332.29	9.00	
6804.00†	21.790	282.142	6759.36	-285.03	568.13	303.45	9.00	
6904.00†	30.558	277.473	6849.02	-241.38	575.36	260.01	9.00	
7004.00†	39.423	274.746	6930.87	-184.25	581.30	203.05	9.00	
7104.00†	48.331	272.890	7002.89	-115.06	585.82	133.96	9.00	
7204.00†	57.262	271.489	7063.29	-35.49	588.80	54.45	9.00	
7304.00†	66.206	270.345	7110.60	52.48	590.17	-33.52	9.00	
7404.00†	75.157	269.350	7143.65	146.69	589.90	-127.80	9.00	
7504.00†	84.112	268.435	7161.62	244.83	587.99	-226.04	9.00	
7569.74	90.000	267.852	7165.00†	310.32	585.86	-291.64	9.00	End of 3D Arc
7604.00†	90.000	267.852	7165.00	344.49	584.58	-325.87	0.00	
7704.00†	90.000	267.852	7165.00	444.25	580.83	-425.80	0.00	
7804.00†	90.000	267.852	7165.00	544.01	577.08	-525.73	0.00	
7904.00†	90.000	267.852	7165.00	643.77	573.33	-625.66	0.00	
8004.00†	90.000	267.852	7165.00	743.52	569.58	-725.59	0.00	
8104.00†	90.000	267.852	7165.00	843.28	565.83	-825.52	0.00	
8204.00†	90.000	267.852	7165.00	943.04	562.08	-925.45	0.00	
8304.00†	90.000	267.852	7165.00	1042.80	558.34	-1025.38	0.00	
8404.00†	90.000	267.852	7165.00	1142.55	554.59	-1125.31	0.00	



Planned Wellpath Report

GOETZEL 31C-30-M PWP (REV-C.0)

Page 5 of 8



REFERENCE WELLPATH IDENTIFICATION

Operator	SYNERGY RESOURCES CORPORATION	Slot	SLOT#07 GOETZEL 31C-30-M (1993'FNL & 2446'FEL, SEC.29)
Area	COLORADO	Well	GOETZEL 31C-30-M
Field	WELD COUNTY (NAD83,TRUE NORTH)	Wellbore	GOETZEL 31C-30-M PWB
Facility	SEC.29-T06N-R66W		

WELLPATH DATA (165 stations) † = interpolated/extrapolated station

MD [ft]	Inclination [°]	Azimuth [°]	TVD [ft]	Vert Sect [ft]	North [ft]	East [ft]	DLS [°/100ft]	Comments
8504.00†	90.000	267.852	7165.00	1242.31	550.84	-1225.24	0.00	
8604.00†	90.000	267.852	7165.00	1342.07	547.09	-1325.17	0.00	
8704.00†	90.000	267.852	7165.00	1441.83	543.34	-1425.10	0.00	
8804.00†	90.000	267.852	7165.00	1541.58	539.59	-1525.03	0.00	
8904.00†	90.000	267.852	7165.00	1641.34	535.84	-1624.96	0.00	
9004.00†	90.000	267.852	7165.00	1741.10	532.09	-1724.89	0.00	
9104.00†	90.000	267.852	7165.00	1840.86	528.34	-1824.82	0.00	
9204.00†	90.000	267.852	7165.00	1940.61	524.60	-1924.74	0.00	
9304.00†	90.000	267.852	7165.00	2040.37	520.85	-2024.67	0.00	
9404.00†	90.000	267.852	7165.00	2140.13	517.10	-2124.60	0.00	
9504.00†	90.000	267.852	7165.00	2239.89	513.35	-2224.53	0.00	
9604.00†	90.000	267.852	7165.00	2339.65	509.60	-2324.46	0.00	
9704.00†	90.000	267.852	7165.00	2439.40	505.85	-2424.39	0.00	
9804.00†	90.000	267.852	7165.00	2539.16	502.10	-2524.32	0.00	
9904.00†	90.000	267.852	7165.00	2638.92	498.35	-2624.25	0.00	
10004.00†	90.000	267.852	7165.00	2738.68	494.61	-2724.18	0.00	
10104.00†	90.000	267.852	7165.00	2838.43	490.86	-2824.11	0.00	
10204.00†	90.000	267.852	7165.00	2938.19	487.11	-2924.04	0.00	
10304.00†	90.000	267.852	7165.00	3037.95	483.36	-3023.97	0.00	
10404.00†	90.000	267.852	7165.00	3137.71	479.61	-3123.90	0.00	
10504.00†	90.000	267.852	7165.00	3237.46	475.86	-3223.83	0.00	
10604.00†	90.000	267.852	7165.00	3337.22	472.11	-3323.76	0.00	
10704.00†	90.000	267.852	7165.00	3436.98	468.36	-3423.69	0.00	
10804.00†	90.000	267.852	7165.00	3536.74	464.61	-3523.62	0.00	
10904.00†	90.000	267.852	7165.00	3636.49	460.87	-3623.55	0.00	
11004.00†	90.000	267.852	7165.00	3736.25	457.12	-3723.48	0.00	
11104.00†	90.000	267.852	7165.00	3836.01	453.37	-3823.41	0.00	
11204.00†	90.000	267.852	7165.00	3935.77	449.62	-3923.34	0.00	
11304.00†	90.000	267.852	7165.00	4035.52	445.87	-4023.27	0.00	
11404.00†	90.000	267.852	7165.00	4135.28	442.12	-4123.20	0.00	



Planned Wellpath Report

GOETZEL 31C-30-M PWP (REV-C.0)

Page 6 of 8



REFERENCE WELLPATH IDENTIFICATION

Operator	SYNERGY RESOURCES CORPORATION	Slot	SLOT#07 GOETZEL 31C-30-M (1993'FNL & 2446'FEL, SEC.29)
Area	COLORADO	Well	GOETZEL 31C-30-M
Field	WELD COUNTY (NAD83,TRUE NORTH)	Wellbore	GOETZEL 31C-30-M PWB
Facility	SEC.29-T06N-R66W		

WELLPATH DATA (165 stations) † = interpolated/extrapolated station

MD [ft]	Inclination [°]	Azimuth [°]	TVD [ft]	Vert Sect [ft]	North [ft]	East [ft]	DLS [°/100ft]	Comments
11504.00†	90.000	267.852	7165.00	4235.04	438.37	-4223.13	0.00	
11604.00†	90.000	267.852	7165.00	4334.80	434.62	-4323.06	0.00	
11704.00†	90.000	267.852	7165.00	4434.55	430.87	-4422.99	0.00	
11804.00†	90.000	267.852	7165.00	4534.31	427.13	-4522.92	0.00	
11904.00†	90.000	267.852	7165.00	4634.07	423.38	-4622.85	0.00	
12004.00†	90.000	267.852	7165.00	4733.83	419.63	-4722.78	0.00	
12104.00†	90.000	267.852	7165.00	4833.58	415.88	-4822.71	0.00	
12204.00†	90.000	267.852	7165.00	4933.34	412.13	-4922.64	0.00	
12304.00†	90.000	267.852	7165.00	5033.10	408.38	-5022.57	0.00	
12404.00†	90.000	267.852	7165.00	5132.86	404.63	-5122.50	0.00	
12504.00†	90.000	267.852	7165.00	5232.61	400.88	-5222.42	0.00	
12604.00†	90.000	267.852	7165.00	5332.37	397.13	-5322.35	0.00	
12704.00†	90.000	267.852	7165.00	5432.13	393.39	-5422.28	0.00	
12804.00†	90.000	267.852	7165.00	5531.89	389.64	-5522.21	0.00	
12904.00†	90.000	267.852	7165.00	5631.64	385.89	-5622.14	0.00	
13004.00†	90.000	267.852	7165.00	5731.40	382.14	-5722.07	0.00	
13104.00†	90.000	267.852	7165.00	5831.16	378.39	-5822.00	0.00	
13204.00†	90.000	267.852	7165.00	5930.92	374.64	-5921.93	0.00	
13304.00†	90.000	267.852	7165.00	6030.67	370.89	-6021.86	0.00	
13404.00†	90.000	267.852	7165.00	6130.43	367.14	-6121.79	0.00	
13504.00†	90.000	267.852	7165.00	6230.19	363.39	-6221.72	0.00	
13604.00†	90.000	267.852	7165.00	6329.95	359.65	-6321.65	0.00	
13704.00†	90.000	267.852	7165.00	6429.70	355.90	-6421.58	0.00	
13804.00†	90.000	267.852	7165.00	6529.46	352.15	-6521.51	0.00	
13904.00†	90.000	267.852	7165.00	6629.22	348.40	-6621.44	0.00	
14004.00†	90.000	267.852	7165.00	6728.98	344.65	-6721.37	0.00	
14104.00†	90.000	267.852	7165.00	6828.73	340.90	-6821.30	0.00	
14204.00†	90.000	267.852	7165.00	6928.49	337.15	-6921.23	0.00	
14304.00†	90.000	267.852	7165.00	7028.25	333.40	-7021.16	0.00	
14404.00†	90.000	267.852	7165.00	7128.01	329.65	-7121.09	0.00	



Planned Wellpath Report

GOETZEL 31C-30-M PWP (REV-C.0)

Page 7 of 8



REFERENCE WELLPATH IDENTIFICATION

Operator	SYNERGY RESOURCES CORPORATION	Slot	SLOT#07 GOETZEL 31C-30-M (1993'FNL & 2446'FEL, SEC.29)
Area	COLORADO	Well	GOETZEL 31C-30-M
Field	WELD COUNTY (NAD83,TRUE NORTH)	Wellbore	GOETZEL 31C-30-M PWB
Facility	SEC.29-T06N-R66W		

WELLPATH DATA (165 stations) † = interpolated/extrapolated station

MD [ft]	Inclination [°]	Azimuth [°]	TVD [ft]	Vert Sect [ft]	North [ft]	East [ft]	DLS [°/100ft]	Comments
14504.00†	90.000	267.852	7165.00	7227.76	325.91	-7221.02	0.00	
14604.00†	90.000	267.852	7165.00	7327.52	322.16	-7320.95	0.00	
14704.00†	90.000	267.852	7165.00	7427.28	318.41	-7420.88	0.00	
14804.00†	90.000	267.852	7165.00	7527.04	314.66	-7520.81	0.00	
14904.00†	90.000	267.852	7165.00	7626.79	310.91	-7620.74	0.00	
15004.00†	90.000	267.852	7165.00	7726.55	307.16	-7720.67	0.00	
15104.00†	90.000	267.852	7165.00	7826.31	303.41	-7820.60	0.00	
15204.00†	90.000	267.852	7165.00	7926.07	299.66	-7920.53	0.00	
15304.00†	90.000	267.852	7165.00	8025.82	295.91	-8020.46	0.00	
15404.00†	90.000	267.852	7165.00	8125.58	292.17	-8120.39	0.00	
15504.00†	90.000	267.852	7165.00	8225.34	288.42	-8220.32	0.00	
15604.00†	90.000	267.852	7165.00	8325.10	284.67	-8320.25	0.00	
15704.00†	90.000	267.852	7165.00	8424.85	280.92	-8420.18	0.00	
15804.00†	90.000	267.852	7165.00	8524.61	277.17	-8520.11	0.00	
15848.75	90.000	267.852	7165.00 ²	8569.26	275.49	-8564.83	0.00	End of Tangent

HOLE & CASING SECTIONS - Ref Wellbore: GOETZEL 31C-30-M PWB Ref Wellpath: GOETZEL 31C-30-M PWP (REV-C.0)

String/Diameter	Start MD [ft]	End MD [ft]	Interval [ft]	Start TVD [ft]	End TVD [ft]	Start N/S [ft]	Start E/W [ft]	End N/S [ft]	End E/W [ft]
13.5in Open Hole	4.00	1700.00	1696.00	4.00	1696.29	0.00	0.00	58.18	37.03
9.625in Casing Surface	4.00	1700.00	1696.00	4.00	1696.29	0.00	0.00	58.18	37.03
8.5in Open Hole	1700.00	15848.75	14148.75	1696.29	7165.00	58.18	37.03	275.49	-8564.83



Planned Wellpath Report

GOETZEL 31C-30-M PWP (REV-C.0)

Page 8 of 8



REFERENCE WELLPATH IDENTIFICATION

Operator	SYNERGY RESOURCES CORPORATION	Slot	SLOT#07 GOETZEL 31C-30-M (1993'FNL & 2446'FEL, SEC.29)
Area	COLORADO	Well	GOETZEL 31C-30-M
Field	WELD COUNTY (NAD83,TRUE NORTH)	Wellbore	GOETZEL 31C-30-M PWB
Facility	SEC.29-T06N-R66W		

TARGETS

Name	MD [ft]	TVD [ft]	North [ft]	East [ft]	Grid East [US ft]	Grid North [US ft]	Latitude	Longitude	Shape
SEC.29-T06N-R66W NORTHERN		-16.00	180.01	1.10	3194449.66	1411671.99	40°27'40.817"N	104°48'04.259"W	polygon
SEC.29-T06N-R66W SOUTHERN		-16.00	180.01	1.10	3194449.66	1411671.99	40°27'40.817"N	104°48'04.259"W	polygon
SEC.30-T06N-R66W NORTHERN		-16.00	180.01	1.10	3194449.66	1411671.99	40°27'40.817"N	104°48'04.259"W	polygon
SEC.30-T06N-R66W SOUTHERN		-16.00	180.01	1.10	3194449.66	1411671.99	40°27'40.817"N	104°48'04.259"W	polygon
GOETZEL 31C-30-M BHL REV-1 (1404'FNL & 510'FWL, SEC.30)		7165.00	294.68	-8204.74	3186243.49	1411721.98	40°27'41.936"N	104°49'50.419"W	circle
2) GOETZEL 31C-30-M BHL REV-2 (1404'FNL & 150'FWL, SEC.30)	15848.75	7165.00	275.49	-8564.83	3185883.58	1411699.96	40°27'41.746"N	104°49'55.078"W	point
1) GOETZEL 31C-30-M TOP REV-1 (1401'FNL & 2584'FWL, SEC.29)	7569.74	7165.00	585.86	-291.64	3194153.75	1412075.50	40°27'44.827"N	104°48'08.046"W	circle

SURVEY PROGRAM - Ref Wellbore: GOETZEL 31C-30-M PWB Ref Wellpath: GOETZEL 31C-30-M PWP (REV-C.0)

Start MD [ft]	End MD [ft]	Positional Uncertainty Model	Log Name/Comment	Wellbore
4.00	1700.00	Custom BHI NaviTrak (Standard Rotating) (Rockies 0.03Gt model)		GOETZEL 31C-30-M PWB
1700.00	15849.00	Custom BHI AutoTrak Curve (IFR1, Short) (Rockies 0.03Gt model)		GOETZEL 31C-30-M PWB