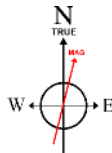


Location:	COLORADO	Slot:	SLOT#06 GOETZEL 31N-30B-M (1913'FNL & 2446'FEL, SEC.29)
Field:	WELD COUNTY (NAD83,TRUE NORTH)	Well:	GOETZEL 31N-30B-M
Facility:	SEC.29-T06N-R66W	Wellbore:	GOETZEL 31N-30B-M PWB

Plot reference wellpath is GOETZEL 31N-30B-M PWP (REV-C.0)	
True vertical depths are referenced to PROPETRO 12 (4) (RKB)	" = Wellpath was transformed from a different geodetic datum
Measured depths are referenced to PROPETRO 12 (4) (RKB)	North Reference: True north
PROPETRO 12 (4) (RKB) to Mean Sea Level: 4732 feet	Scale: True distance
Mean Sea Level to Mud line (At Slot: SLOTR06 GOETZEL 31N-30B-M (1913FNL & 2446FEL, SEC.29): 0 feet	Depths are in feet
Coordinates are in feet referenced to Slot	Created by: wagnerj on 2017-02-23
	Database: WA_DEN_Denver_Dein

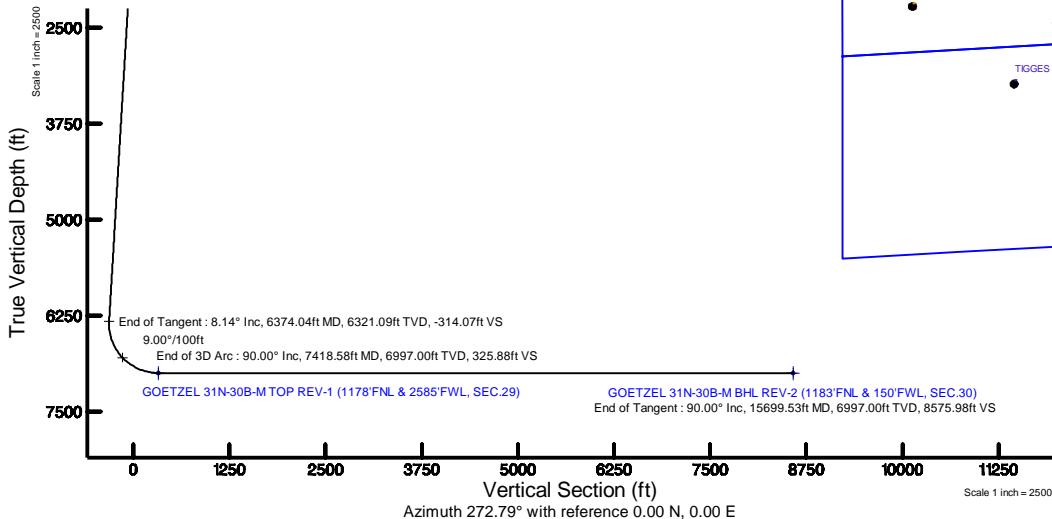
Facility Name			Grid East (US ft)	Grid North (US ft)	Latitude	Longitude
SEC 29-T06N-R66W			31944.49.646	1411672.008	40°27'40.817"N	104°48'04.259"W
Spot	Local N (ft)	Local E (ft)	Grid East (US ft)	Grid North (US ft)	Latitude	Longitude
SLOT#06 GOETZEL 31N-30B-M(1913FNL & 2446FTEL, SEC.29)	-99.88	-0.54	31944.49.892	1411572.127	40°27'39.830"N	104°48'04.266"W
PROPETO 12 (4') (RKB) to Mud line (At Slot: SLOT#06 GOETZEL 31N-30B-M(1913FNL & 2446FTEL, SEC.29))					4732ft	
Mean Sea Level to Mud line (At Slot: SLOT#06 GOETZEL 31N-30B-M(1913FNL & 2446FTEL, SEC.29))					0ft	
PROPETO 12 (4') (RKB) to Mean Sea Level					4732ft	

MD (ft)	Inc (°)	Az (°)	TVD (ft)	Local N (ft)	Local E (ft)	Grid East (US ft)	Grid North (US ft)	Latitude	Longitude
4.00	0.000	27.417	4.00	0.00	0.00	3194449.89	1411572.13	40°27'39.830"N	104°48'04.266"W



BGGM (1900.0 to 2018.0) Dip: 66.92° Field: 52499.6 nT  
Magnetic North is 8.43 degrees East of True North (at 2/22/2017)

To correct azimuth from Magnetic to True add 8.43 degrees



Well Profile Data								
Design Comment	MD (ft)	Inc (°)	Az (°)	TVD (ft)	Local N (ft)	Local E (ft)	DLS (°/100ft)	VS (ft)
Tie On	4.00	0.000	27.417	4.00	0.00	0.00	0.00	0.00
End of Tangent	850.00	0.000	27.417	850.00	0.00	0.00	0.00	0.00
End of Build	1257.11	8.142	27.417	1255.74	25.63	13.30	2.00	-12.04
End of Tangent	6374.04	8.142	27.417	6321.09	668.94	347.00	0.00	-314.07
End of 3D Arc	7418.58	90.000	267.839	6997.00	729.04	-290.78	9.00	325.88
End of Tangent	15699.53	90.000	267.839	6997.00	416.85	-8565.85	0.00	8575.98

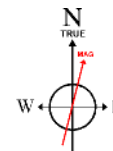
Start MD (ft)	End MD (ft)	Tool	Model	Log Name/Comment	Wellbore
4.00	1700.00	BHI NavTrak	Custom BHI NavTrak (Standard Rotating) (Rockies 0.03Gt model)		GOETZEL 31N-308-M PWB
1700.00	15700.00	BHI AutoTrak Curve	Custom BHI AutoTrak Curve (IFR1, Short) (Rockies 0.03Gt model)		GOETZEL 31N-308-M PWB

Name	MD (ft)	TVD (ft)	Local N (ft)	Local E (ft)	Grid East (US ft)	Grid North (US ft)	Latitude	Longitude
SEC 29-T06N-R66W NORTHERN		-16.00	99.86	0.56	3194449.66	1411671.99	40°27'40.817"N	104°48'04.259"W
SEC 29-T06N-R66W SOUTHERN		-16.00	99.86	0.56	3194449.66	1411671.99	40°27'40.817"N	104°48'04.259"W
SEC 30-T06N-R66W NORTHERN		-16.00	99.86	0.56	3194449.66	1411671.99	40°27'40.817"N	104°48'04.259"W
SEC 30-T06N-R66W SOUTHERN		-16.00	99.86	0.56	3194449.66	1411671.99	40°27'40.817"N	104°48'04.259"W
GOETZEL 31N-30B-MBHL REV1 (1183FNL & 510FWL SEC.30)	6997.00	435.67	-8205.76	318621.24	111943.10	40°27'44.122"N	104°49'50.426"W	
GOETZEL 31N-30B-MBHL REV2 (1183FNL & 150FWL SEC.30)	15699.53	6997.00	416.85	-8565.85	318589.81	141921.44	40°27'43.934"N	104°49'55.085"W
GOETZEL 31N-30B-MTOP REV1 (1178FNL & 258FWL SEC.30)	7418.58	6997.00	729.04	-290.78	319415.38	142296.82	40°27'47.034"N	104°48'08.026"W



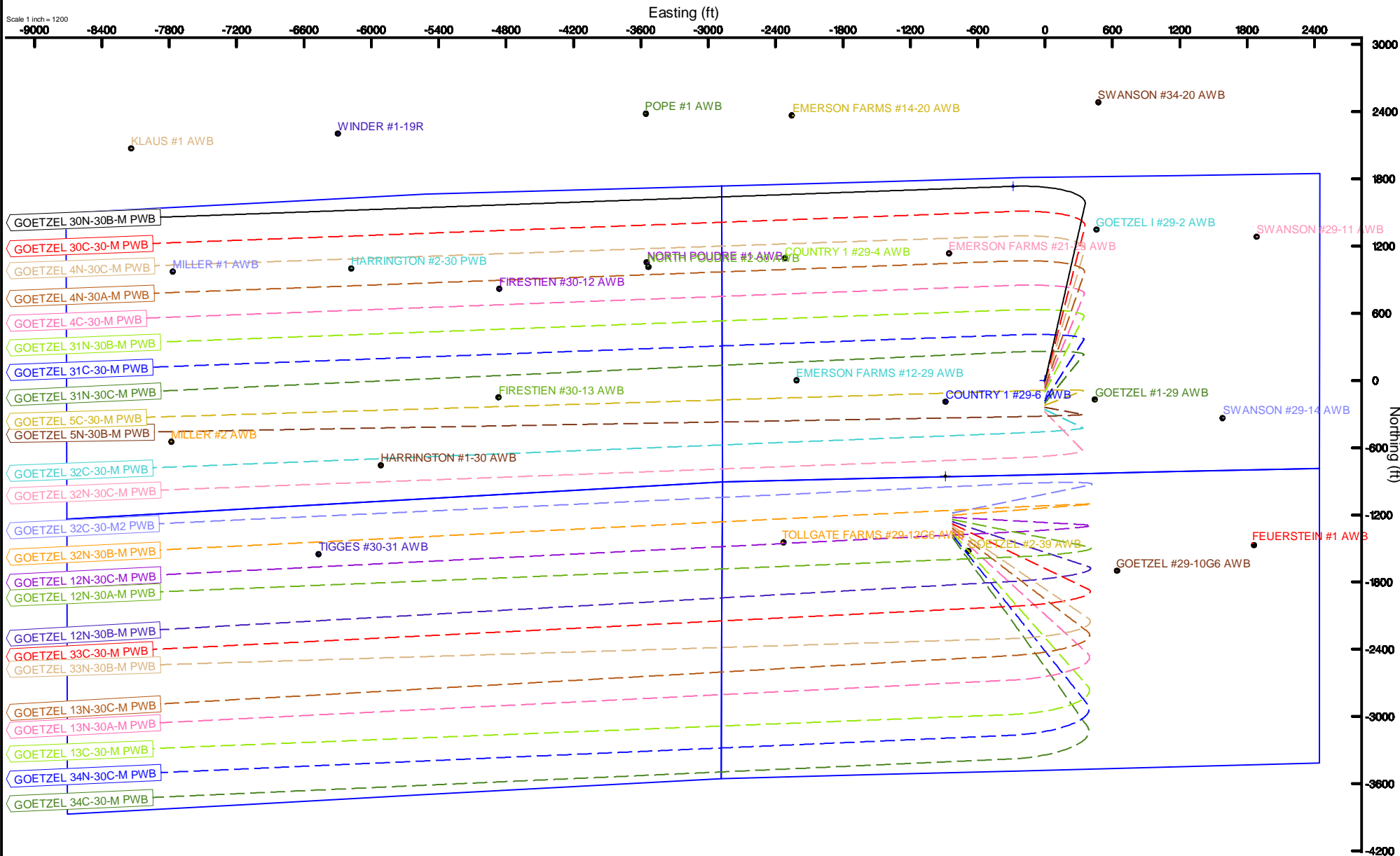
# SYNERGY RESOURCES CORPORATION

Location: COLORADO Slot: SLOT#01 GOETZEL 30N-30B-M (1813'FNL & 2445'FEL, SEC.29)  
Field: WELD COUNTY (NAD83,TRUE NORTH) Well: GOETZEL 30N-30B-M  
Facility: SEC.29-T06N-R66W Wellbore: GOETZEL 30N-30B-M-PWB



BGGM (1900.0 to 2018.0) Dip: 66.92° Field: 52499.6 nT  
Magnetic North is 8.43 degrees East of True North (at 2/22/2017)

To correct azimuth from Magnetic to True add 8.43 degrees



GOETZEL\_31N-30B-M\_PWP\_\_REV-C.0\_.las

~VERSION INFORMATION

VERS. 2.0 : CWLS LOG ASCII STANDARD-VERSION 2.0

WRAP. NO : ASCII DATA SECTION CONTAINS ONE ROW PER WELLPATH STATION

~WELL INFORMATION

#MNEM	.UNITS	DATA	:DESCRIPTION
#----	.-----	----	:-----
STRT	.ft	0.00	:START MD
STOP	.ft	15699.53	:STOP MD
STEP	.ft	0.0	:STEP (non-uniform increment)
NULL	.	-999.99	:NULL
COMP	.	SYNERGY RESOURCES CORPORATION	:OPERATOR
WELL	.	GOETZEL 31N-30B-M	:WELL
FLD	.	WELD COUNTY (NAD83,TRUE NORTH)	:FIELD
LOC	.	COLORADO	:AREA (aka: Location)
CNTY	.	N/A	:COUNTY
STAT	.	N/A	:STATE
CTRY	.	N/A	:COUNTRY
SRVC	.	Baker Hughes	:CONTRACTOR
DATE	.	11/10/2016	:LOG REV DATE
API	.		:API NUMBER

~OTHER INFORMATION

#Software: WellArchitect(R) Version 5.0

#MNEM	.UNITS	DATA	:DESCRIPTION
#----	.-----	----	:-----
WPTYPE	.	PLANNED WELLPATH	:WELLPATH TYPE
FACILITY	.	SEC.29-T06N-R66W	:FACILITY
SLOT	.	SLOT#06 GOETZEL 31N-30B-M (1913'FNL & 2446'FEL, SEC.29):SLOT	:SLOT
WELLBORE	.	GOETZEL 31N-30B-M PWB	:WELLBORE
WELLPATH	.	GOETZEL 31N-30B-M PWP (REV-C.0)	:WELLPATH
MDREFPT	.	PROPETRO 12 (4') (RKB)	:MD REFERENCE POINT
TVDREFPT	.	PROPETRO 12 (4') (RKB)	:TVD REFERENCE POINT
LCLREFPT	.	Slot	:LOCAL COORDINATE REFERENCE PT
VSAZIMUTH.deg		272.79	:VERTICAL SECTION AZIMUTH
VSORIGN .ft		0.00	:VERTICAL SECTION ORIGIN NORTH
VSORIGE .ft		0.00	:VERTICAL SECTION ORIGIN EAST

~CURVE (WELLPATH) INFORMATION

#MNEM	.UNITS	:DESCRIPTION
#----	.-----	:-----
DEPT	.ft	:MEASURED DEPTH
INC	.deg	:INCLINATION
AZI	.deg	:AZIMUTH

GOETZEL\_31N-30B-M\_PWP\_\_REV-C.0\_.las

TVD .ft :TRUE VERTICAL DEPTH  
 SECT .ft :CROSS SECTION (CURTAIN/VERTICAL)  
 LOCALN .ft :LOCAL NORTH  
 LOCALE .ft :LOCAL EAST  
 LAT .deg :LATITUDE  
 LONG .deg :LONGITUDE  
 DLS .deg/100ft :DOGLEG SEVERITY

~ASCII DATA

0.00	0.00	27.42	0.00	0.00	0.00	0.00	40.4610639	-104.8011850	0.00
4.00	0.00	27.42	4.00	0.00	0.00	0.00	40.4610639	-104.8011850	0.00
104.00	0.00	27.42	104.00	0.00	0.00	0.00	40.4610639	-104.8011850	0.00
204.00	0.00	27.42	204.00	0.00	0.00	0.00	40.4610639	-104.8011850	0.00
304.00	0.00	27.42	304.00	0.00	0.00	0.00	40.4610639	-104.8011850	0.00
404.00	0.00	27.42	404.00	0.00	0.00	0.00	40.4610639	-104.8011850	0.00
504.00	0.00	27.42	504.00	0.00	0.00	0.00	40.4610639	-104.8011850	0.00
604.00	0.00	27.42	604.00	0.00	0.00	0.00	40.4610639	-104.8011850	0.00
704.00	0.00	27.42	704.00	0.00	0.00	0.00	40.4610639	-104.8011850	0.00
804.00	0.00	27.42	804.00	0.00	0.00	0.00	40.4610639	-104.8011850	0.00
850.00	0.00	27.42	850.00	0.00	0.00	0.00	40.4610639	-104.8011850	0.00
904.00	1.08	27.42	904.00	-0.21	0.45	0.23	40.4610651	-104.8011842	2.00
1004.00	3.08	27.42	1003.93	-1.72	3.67	1.91	40.4610740	-104.8011782	2.00
1104.00	5.08	27.42	1103.67	-4.69	9.99	5.18	40.4610913	-104.8011664	2.00
1204.00	7.08	27.42	1203.10	-9.10	19.39	10.06	40.4611171	-104.8011489	2.00
1257.11	8.14	27.42	1255.74	-12.04	25.63	13.30	40.4611343	-104.8011372	2.00
1304.00	8.14	27.42	1302.16	-14.80	31.53	16.36	40.4611504	-104.8011262	0.00
1404.00	8.14	27.42	1401.15	-20.71	44.10	22.88	40.4611849	-104.8011028	0.00
1504.00	8.14	27.42	1500.14	-26.61	56.67	29.40	40.4612195	-104.8010794	0.00
1604.00	8.14	27.42	1599.13	-32.51	69.25	35.92	40.4612540	-104.8010559	0.00
1704.00	8.14	27.42	1698.13	-38.41	81.82	42.44	40.4612885	-104.8010325	0.00
1804.00	8.14	27.42	1797.12	-44.32	94.39	48.96	40.4613230	-104.8010090	0.00
1904.00	8.14	27.42	1896.11	-50.22	106.96	55.48	40.4613575	-104.8009856	0.00
2004.00	8.14	27.42	1995.10	-56.12	119.53	62.01	40.4613920	-104.8009622	0.00
2104.00	8.14	27.42	2094.09	-62.03	132.11	68.53	40.4614265	-104.8009387	0.00
2204.00	8.14	27.42	2193.09	-67.93	144.68	75.05	40.4614610	-104.8009153	0.00
2304.00	8.14	27.42	2292.08	-73.83	157.25	81.57	40.4614955	-104.8008919	0.00
2404.00	8.14	27.42	2391.07	-79.73	169.82	88.09	40.4615300	-104.8008684	0.00
2504.00	8.14	27.42	2490.06	-85.64	182.39	94.61	40.4615645	-104.8008450	0.00
2604.00	8.14	27.42	2589.05	-91.54	194.97	101.13	40.4615990	-104.8008216	0.00
2704.00	8.14	27.42	2688.05	-97.44	207.54	107.66	40.4616336	-104.8007981	0.00
2804.00	8.14	27.42	2787.04	-103.34	220.11	114.18	40.4616681	-104.8007747	0.00
2904.00	8.14	27.42	2886.03	-109.25	232.68	120.70	40.4617026	-104.8007512	0.00
3004.00	8.14	27.42	2985.02	-115.15	245.25	127.22	40.4617371	-104.8007278	0.00
3104.00	8.14	27.42	3084.01	-121.05	257.83	133.74	40.4617716	-104.8007044	0.00

GOETZEL\_31N-30B-M\_PWP\_\_REV-C.0\_.las

3204.00	8.14	27.42	3183.01	-126.95	270.40	140.26	40.4618061	-104.8006809	0.00
3304.00	8.14	27.42	3282.00	-132.86	282.97	146.79	40.4618406	-104.8006575	0.00
3404.00	8.14	27.42	3380.99	-138.76	295.54	153.31	40.4618751	-104.8006341	0.00
3504.00	8.14	27.42	3479.98	-144.66	308.12	159.83	40.4619096	-104.8006106	0.00
3604.00	8.14	27.42	3578.97	-150.57	320.69	166.35	40.4619441	-104.8005872	0.00
3704.00	8.14	27.42	3677.97	-156.47	333.26	172.87	40.4619786	-104.8005638	0.00
3804.00	8.14	27.42	3776.96	-162.37	345.83	179.39	40.4620131	-104.8005403	0.00
3904.00	8.14	27.42	3875.95	-168.27	358.40	185.91	40.4620477	-104.8005169	0.00
4004.00	8.14	27.42	3974.94	-174.18	370.98	192.44	40.4620822	-104.8004934	0.00
4104.00	8.14	27.42	4073.93	-180.08	383.55	198.96	40.4621167	-104.8004700	0.00
4204.00	8.14	27.42	4172.93	-185.98	396.12	205.48	40.4621512	-104.8004466	0.00
4304.00	8.14	27.42	4271.92	-191.88	408.69	212.00	40.4621857	-104.8004231	0.00
4404.00	8.14	27.42	4370.91	-197.79	421.26	218.52	40.4622202	-104.8003997	0.00
4504.00	8.14	27.42	4469.90	-203.69	433.84	225.04	40.4622547	-104.8003763	0.00
4604.00	8.14	27.42	4568.89	-209.59	446.41	231.56	40.4622892	-104.8003528	0.00
4704.00	8.14	27.42	4667.89	-215.50	458.98	238.09	40.4623237	-104.8003294	0.00
4804.00	8.14	27.42	4766.88	-221.40	471.55	244.61	40.4623582	-104.8003060	0.00
4904.00	8.14	27.42	4865.87	-227.30	484.12	251.13	40.4623927	-104.8002825	0.00
5004.00	8.14	27.42	4964.86	-233.20	496.70	257.65	40.4624273	-104.8002591	0.00
5104.00	8.14	27.42	5063.85	-239.11	509.27	264.17	40.4624618	-104.8002356	0.00
5204.00	8.14	27.42	5162.85	-245.01	521.84	270.69	40.4624963	-104.8002122	0.00
5304.00	8.14	27.42	5261.84	-250.91	534.41	277.22	40.4625308	-104.8001888	0.00
5404.00	8.14	27.42	5360.83	-256.81	546.98	283.74	40.4625653	-104.8001653	0.00
5504.00	8.14	27.42	5459.82	-262.72	559.56	290.26	40.4625998	-104.8001419	0.00
5604.00	8.14	27.42	5558.81	-268.62	572.13	296.78	40.4626343	-104.8001185	0.00
5704.00	8.14	27.42	5657.81	-274.52	584.70	303.30	40.4626688	-104.8000950	0.00
5804.00	8.14	27.42	5756.80	-280.43	597.27	309.82	40.4627033	-104.8000716	0.00
5904.00	8.14	27.42	5855.79	-286.33	609.85	316.34	40.4627378	-104.8000481	0.00
6004.00	8.14	27.42	5954.78	-292.23	622.42	322.87	40.4627723	-104.8000247	0.00
6104.00	8.14	27.42	6053.77	-298.13	634.99	329.39	40.4628068	-104.8000013	0.00
6204.00	8.14	27.42	6152.77	-304.04	647.56	335.91	40.4628414	-104.7999778	0.00
6304.00	8.14	27.42	6251.76	-309.94	660.13	342.43	40.4628759	-104.7999544	0.00
6374.04	8.14	27.42	6321.09	-314.07	668.94	347.00	40.4629000	-104.7999380	0.00
6404.00	7.21	8.35	6350.79	-315.14	672.68	348.25	40.4629103	-104.7999335	9.00
6504.00	10.45	310.29	6449.77	-308.54	684.78	342.23	40.4629435	-104.7999551	9.00
6604.00	18.09	290.23	6546.67	-286.49	696.03	320.70	40.4629744	-104.8000325	9.00
6704.00	26.59	282.24	6639.10	-249.53	706.17	284.19	40.4630022	-104.8001637	9.00
6804.00	35.32	277.96	6724.78	-198.56	714.93	233.59	40.4630263	-104.8003455	9.00
6904.00	44.15	275.21	6801.62	-134.85	722.10	170.15	40.4630460	-104.8005735	9.00
7004.00	53.02	273.21	6867.71	-59.96	727.51	95.44	40.4630608	-104.8008420	9.00
7104.00	61.92	271.65	6921.43	24.26	731.03	11.29	40.4630705	-104.8011444	9.00
7204.00	70.84	270.32	6961.45	115.74	732.56	-80.23	40.4630747	-104.8014733	9.00
7304.00	79.77	269.13	6986.80	212.23	732.07	-176.86	40.4630733	-104.8018206	9.00
7404.00	88.70	268.00	6996.83	311.35	729.57	-276.22	40.4630665	-104.8021777	9.00

GOETZEL_31N-30B-M_PWP__REV-C.0_.las									
7418.58	90.00	267.84	6997.00	325.88	729.04	-290.78	40.4630650	-104.8022300	9.00
7504.00	90.00	267.84	6997.00	410.98	725.82	-376.15	40.4630562	-104.8025368	0.00
7604.00	90.00	267.84	6997.00	510.61	722.05	-476.07	40.4630458	-104.8028959	0.00
7704.00	90.00	267.84	6997.00	610.24	718.28	-576.00	40.4630355	-104.8032550	0.00
7804.00	90.00	267.84	6997.00	709.86	714.51	-675.93	40.4630251	-104.8036141	0.00
7904.00	90.00	267.84	6997.00	809.49	710.74	-775.86	40.4630147	-104.8039732	0.00
8004.00	90.00	267.84	6997.00	909.12	706.97	-875.79	40.4630044	-104.8043324	0.00
8104.00	90.00	267.84	6997.00	1008.75	703.20	-975.72	40.4629940	-104.8046915	0.00
8204.00	90.00	267.84	6997.00	1108.37	699.43	-1075.65	40.4629837	-104.8050506	0.00
8304.00	90.00	267.84	6997.00	1208.00	695.66	-1175.58	40.4629733	-104.8054097	0.00
8404.00	90.00	267.84	6997.00	1307.63	691.89	-1275.51	40.4629629	-104.8057688	0.00
8504.00	90.00	267.84	6997.00	1407.26	688.12	-1375.44	40.4629526	-104.8061279	0.00
8604.00	90.00	267.84	6997.00	1506.88	684.35	-1475.36	40.4629422	-104.8064871	0.00
8704.00	90.00	267.84	6997.00	1606.51	680.58	-1575.29	40.4629318	-104.8068462	0.00
8804.00	90.00	267.84	6997.00	1706.14	676.81	-1675.22	40.4629215	-104.8072053	0.00
8904.00	90.00	267.84	6997.00	1805.77	673.04	-1775.15	40.4629111	-104.8075644	0.00
9004.00	90.00	267.84	6997.00	1905.39	669.27	-1875.08	40.4629007	-104.8079235	0.00
9104.00	90.00	267.84	6997.00	2005.02	665.50	-1975.01	40.4628904	-104.8082826	0.00
9204.00	90.00	267.84	6997.00	2104.65	661.73	-2074.94	40.4628800	-104.8086418	0.00
9304.00	90.00	267.84	6997.00	2204.28	657.96	-2174.87	40.4628696	-104.8090009	0.00
9404.00	90.00	267.84	6997.00	2303.90	654.19	-2274.80	40.4628593	-104.8093600	0.00
9504.00	90.00	267.84	6997.00	2403.53	650.42	-2374.72	40.4628489	-104.8097191	0.00
9604.00	90.00	267.84	6997.00	2503.16	646.65	-2474.65	40.4628385	-104.8100782	0.00
9704.00	90.00	267.84	6997.00	2602.79	642.88	-2574.58	40.4628281	-104.8104373	0.00
9804.00	90.00	267.84	6997.00	2702.41	639.11	-2674.51	40.4628178	-104.8107965	0.00
9904.00	90.00	267.84	6997.00	2802.04	635.34	-2774.44	40.4628074	-104.8111556	0.00
10004.00	90.00	267.84	6997.00	2901.67	631.57	-2874.37	40.4627970	-104.8115147	0.00
10104.00	90.00	267.84	6997.00	3001.30	627.80	-2974.30	40.4627866	-104.8118738	0.00
10204.00	90.00	267.84	6997.00	3100.92	624.03	-3074.23	40.4627762	-104.8122329	0.00
10304.00	90.00	267.84	6997.00	3200.55	620.26	-3174.16	40.4627659	-104.8125920	0.00
10404.00	90.00	267.84	6997.00	3300.18	616.49	-3274.08	40.4627555	-104.8129511	0.00
10504.00	90.00	267.84	6997.00	3399.81	612.72	-3374.01	40.4627451	-104.8133103	0.00
10604.00	90.00	267.84	6997.00	3499.43	608.95	-3473.94	40.4627347	-104.8136694	0.00
10704.00	90.00	267.84	6997.00	3599.06	605.18	-3573.87	40.4627243	-104.8140285	0.00
10804.00	90.00	267.84	6997.00	3698.69	601.41	-3673.80	40.4627139	-104.8143876	0.00
10904.00	90.00	267.84	6997.00	3798.32	597.64	-3773.73	40.4627035	-104.8147467	0.00
11004.00	90.00	267.84	6997.00	3897.95	593.87	-3873.66	40.4626931	-104.8151058	0.00
11104.00	90.00	267.84	6997.00	3997.57	590.10	-3973.59	40.4626828	-104.8154649	0.00
11204.00	90.00	267.84	6997.00	4097.20	586.33	-4073.52	40.4626724	-104.8158241	0.00
11304.00	90.00	267.84	6997.00	4196.83	582.56	-4173.44	40.4626620	-104.8161832	0.00
11404.00	90.00	267.84	6997.00	4296.46	578.79	-4273.37	40.4626516	-104.8165423	0.00
11504.00	90.00	267.84	6997.00	4396.08	575.02	-4373.30	40.4626412	-104.8169014	0.00
11604.00	90.00	267.84	6997.00	4495.71	571.25	-4473.23	40.4626308	-104.8172605	0.00
11704.00	90.00	267.84	6997.00	4595.34	567.48	-4573.16	40.4626204	-104.8176196	0.00

GOETZEL_31N-30B-M_PWP__REV-C.0_.las									
11804.00	90.00	267.84	6997.00	4694.97	563.71	-4673.09	40.4626100	-104.8179787	0.00
11904.00	90.00	267.84	6997.00	4794.59	559.94	-4773.02	40.4625996	-104.8183378	0.00
12004.00	90.00	267.84	6997.00	4894.22	556.17	-4872.95	40.4625892	-104.8186970	0.00
12104.00	90.00	267.84	6997.00	4993.85	552.40	-4972.88	40.4625788	-104.8190561	0.00
12204.00	90.00	267.84	6997.00	5093.48	548.63	-5072.80	40.4625684	-104.8194152	0.00
12304.00	90.00	267.84	6997.00	5193.10	544.86	-5172.73	40.4625580	-104.8197743	0.00
12404.00	90.00	267.84	6997.00	5292.73	541.09	-5272.66	40.4625476	-104.8201334	0.00
12504.00	90.00	267.84	6997.00	5392.36	537.32	-5372.59	40.4625372	-104.8204925	0.00
12604.00	90.00	267.84	6997.00	5491.99	533.55	-5472.52	40.4625267	-104.8208516	0.00
12704.00	90.00	267.84	6997.00	5591.61	529.78	-5572.45	40.4625163	-104.8212107	0.00
12804.00	90.00	267.84	6997.00	5691.24	526.01	-5672.38	40.4625059	-104.8215699	0.00
12904.00	90.00	267.84	6997.00	5790.87	522.24	-5772.31	40.4624955	-104.8219290	0.00
13004.00	90.00	267.84	6997.00	5890.50	518.47	-5872.24	40.4624851	-104.8222881	0.00
13104.00	90.00	267.84	6997.00	5990.12	514.70	-5972.16	40.4624747	-104.8226472	0.00
13204.00	90.00	267.84	6997.00	6089.75	510.93	-6072.09	40.4624643	-104.8230063	0.00
13304.00	90.00	267.84	6997.00	6189.38	507.16	-6172.02	40.4624539	-104.8233654	0.00
13404.00	90.00	267.84	6997.00	6289.01	503.39	-6271.95	40.4624434	-104.8237245	0.00
13504.00	90.00	267.84	6997.00	6388.63	499.62	-6371.88	40.4624330	-104.8240836	0.00
13604.00	90.00	267.84	6997.00	6488.26	495.85	-6471.81	40.4624226	-104.8244428	0.00
13704.00	90.00	267.84	6997.00	6587.89	492.08	-6571.74	40.4624122	-104.8248019	0.00
13804.00	90.00	267.84	6997.00	6687.52	488.31	-6671.67	40.4624018	-104.8251610	0.00
13904.00	90.00	267.84	6997.00	6787.14	484.54	-6771.60	40.4623913	-104.8255201	0.00
14004.00	90.00	267.84	6997.00	6886.77	480.77	-6871.53	40.4623809	-104.8258792	0.00
14104.00	90.00	267.84	6997.00	6986.40	477.00	-6971.45	40.4623705	-104.8262383	0.00
14204.00	90.00	267.84	6997.00	7086.03	473.23	-7071.38	40.4623601	-104.8265974	0.00
14304.00	90.00	267.84	6997.00	7185.65	469.46	-7171.31	40.4623496	-104.8269565	0.00
14404.00	90.00	267.84	6997.00	7285.28	465.69	-7271.24	40.4623392	-104.8273156	0.00
14504.00	90.00	267.84	6997.00	7384.91	461.92	-7371.17	40.4623288	-104.8276747	0.00
14604.00	90.00	267.84	6997.00	7484.54	458.15	-7471.10	40.4623183	-104.8280339	0.00
14704.00	90.00	267.84	6997.00	7584.16	454.38	-7571.03	40.4623079	-104.8283930	0.00
14804.00	90.00	267.84	6997.00	7683.79	450.61	-7670.96	40.4622975	-104.8287521	0.00
14904.00	90.00	267.84	6997.00	7783.42	446.84	-7770.89	40.4622870	-104.8291112	0.00
15004.00	90.00	267.84	6997.00	7883.05	443.07	-7870.81	40.4622766	-104.8294703	0.00
15104.00	90.00	267.84	6997.00	7982.67	439.30	-7970.74	40.4622662	-104.8298294	0.00
15204.00	90.00	267.84	6997.00	8082.30	435.53	-8070.67	40.4622557	-104.8301885	0.00
15304.00	90.00	267.84	6997.00	8181.93	431.76	-8170.60	40.4622453	-104.8305476	0.00
15404.00	90.00	267.84	6997.00	8281.56	427.99	-8270.53	40.4622349	-104.8309067	0.00
15504.00	90.00	267.84	6997.00	8381.18	424.22	-8370.46	40.4622244	-104.8312658	0.00
15604.00	90.00	267.84	6997.00	8480.81	420.45	-8470.39	40.4622140	-104.8316250	0.00
15699.53	90.00	267.84	6997.00	8575.98	416.85	-8565.85	40.4622040	-104.8319680	0.00



# Planned Wellpath Report

GOETZEL 31N-30B-M PWP (REV-C.0)

Page 1 of 8



## REFERENCE WELLPATH IDENTIFICATION

Operator	SYNERGY RESOURCES CORPORATION	Slot	SLOT#06 GOETZEL 31N-30B-M (1913'FNL & 2446'FEL, SEC.29)
Area	COLORADO	Well	GOETZEL 31N-30B-M
Field	WELD COUNTY (NAD83,TRUE NORTH)	Wellbore	GOETZEL 31N-30B-M PWB
Facility	SEC.29-T06N-R66W		

## REPORT SETUP INFORMATION

Projection System	NAD83 / Lambert Colorado SP, Northern Zone (501), US feet	Software System	WellArchitect® 5.0
North Reference	True	User	Wagnjam
Scale	0.999964	Report Generated	2/23/2017 at 7:48:28 PM
Convergence at slot	0.46° East	Database/Source file	WA_DEN_Denver_Defn/GOETZEL_31N-30B-M_PWP__REV-C.0_.xml

## WELLPATH LOCATION

	Local coordinates		Grid coordinates		Geographic coordinates	
	North[ft]	East[ft]	Easting[US ft]	Northing[US ft]	Latitude	Longitude
Slot Location	-99.88	-0.54	3194449.89	1411572.13	40°27'39.830"N	104°48'04.266"W
Facility Reference Pt			3194449.65	1411672.01	40°27'40.817"N	104°48'04.259"W
Field Reference Pt			3171284.48	1426358.81	40°30'07.643"N	104°53'02.634"W

## WELLPATH DATUM

Calculation method	Minimum curvature	PROPETRO 12 (4') (RKB) to Facility Vertical Datum	4732.00ft
Horizontal Reference Pt	Slot	PROPETRO 12 (4') (RKB) to Mean Sea Level	4732.00ft
Vertical Reference Pt	PROPETRO 12 (4') (RKB)	PROPETRO 12 (4') (RKB) to Mud Line at Slot (SLOT#06 GOETZEL 31N-30B-M (1913'FNL & 2446'FEL, SEC.29))	4732.00ft
MD Reference Pt	PROPETRO 12 (4') (RKB)	Section Origin	N 0.00, E 0.00 ft
Field Vertical Reference	Mean Sea Level	Section Azimuth	272.79°





# Planned Wellpath Report

GOETZEL 31N-30B-M PWP (REV-C.0)

Page 2 of 8



## REFERENCE WELLPATH IDENTIFICATION

Operator	SYNERGY RESOURCES CORPORATION	Slot	SLOT#06 GOETZEL 31N-30B-M (1913'FNL & 2446'FEL, SEC.29)
Area	COLORADO	Well	GOETZEL 31N-30B-M
Field	WELD COUNTY (NAD83,TRUE NORTH)	Wellbore	GOETZEL 31N-30B-M PWB
Facility	SEC.29-T06N-R66W		

## WELLPATH DATA (163 stations) † = interpolated/extrapolated station

MD [ft]	Inclination [°]	Azimuth [°]	TVD [ft]	Vert Sect [ft]	North [ft]	East [ft]	DLS [°/100ft]	Comments
0.00†	0.000	27.417	0.00	0.00	0.00	0.00	0.00	
4.00	0.000	27.417	4.00	0.00	0.00	0.00	0.00	Tie On
104.00†	0.000	27.417	104.00	0.00	0.00	0.00	0.00	
204.00†	0.000	27.417	204.00	0.00	0.00	0.00	0.00	
304.00†	0.000	27.417	304.00	0.00	0.00	0.00	0.00	
404.00†	0.000	27.417	404.00	0.00	0.00	0.00	0.00	
504.00†	0.000	27.417	504.00	0.00	0.00	0.00	0.00	
604.00†	0.000	27.417	604.00	0.00	0.00	0.00	0.00	
704.00†	0.000	27.417	704.00	0.00	0.00	0.00	0.00	
804.00†	0.000	27.417	804.00	0.00	0.00	0.00	0.00	
850.00	0.000	27.417	850.00	0.00	0.00	0.00	0.00	End of Tangent
904.00†	1.080	27.417	904.00	-0.21	0.45	0.23	2.00	
1004.00†	3.080	27.417	1003.93	-1.72	3.67	1.91	2.00	
1104.00†	5.080	27.417	1103.67	-4.69	9.99	5.18	2.00	
1204.00†	7.080	27.417	1203.10	-9.10	19.39	10.06	2.00	
1257.11	8.142	27.417	1255.74	-12.04	25.63	13.30	2.00	End of Build
1304.00†	8.142	27.417	1302.16	-14.80	31.53	16.36	0.00	
1404.00†	8.142	27.417	1401.15	-20.71	44.10	22.88	0.00	
1504.00†	8.142	27.417	1500.14	-26.61	56.67	29.40	0.00	
1604.00†	8.142	27.417	1599.13	-32.51	69.25	35.92	0.00	
1704.00†	8.142	27.417	1698.13	-38.41	81.82	42.44	0.00	
1804.00†	8.142	27.417	1797.12	-44.32	94.39	48.96	0.00	
1904.00†	8.142	27.417	1896.11	-50.22	106.96	55.48	0.00	
2004.00†	8.142	27.417	1995.10	-56.12	119.53	62.01	0.00	
2104.00†	8.142	27.417	2094.09	-62.03	132.11	68.53	0.00	
2204.00†	8.142	27.417	2193.09	-67.93	144.68	75.05	0.00	
2304.00†	8.142	27.417	2292.08	-73.83	157.25	81.57	0.00	
2404.00†	8.142	27.417	2391.07	-79.73	169.82	88.09	0.00	
2504.00†	8.142	27.417	2490.06	-85.64	182.39	94.61	0.00	
2604.00†	8.142	27.417	2589.05	-91.54	194.97	101.13	0.00	



# Planned Wellpath Report

GOETZEL 31N-30B-M PWP (REV-C.0)

Page 3 of 8



## REFERENCE WELLPATH IDENTIFICATION

Operator	SYNERGY RESOURCES CORPORATION	Slot	SLOT#06 GOETZEL 31N-30B-M (1913'FNL & 2446'FEL, SEC.29)
Area	COLORADO	Well	GOETZEL 31N-30B-M
Field	WELD COUNTY (NAD83,TRUE NORTH)	Wellbore	GOETZEL 31N-30B-M PWB
Facility	SEC.29-T06N-R66W		

## WELLPATH DATA (163 stations) † = interpolated/extrapolated station

MD [ft]	Inclination [°]	Azimuth [°]	TVD [ft]	Vert Sect [ft]	North [ft]	East [ft]	DLS [°/100ft]	Comments
2704.00†	8.142	27.417	2688.05	-97.44	207.54	107.66	0.00	
2804.00†	8.142	27.417	2787.04	-103.34	220.11	114.18	0.00	
2904.00†	8.142	27.417	2886.03	-109.25	232.68	120.70	0.00	
3004.00†	8.142	27.417	2985.02	-115.15	245.25	127.22	0.00	
3104.00†	8.142	27.417	3084.01	-121.05	257.83	133.74	0.00	
3204.00†	8.142	27.417	3183.01	-126.95	270.40	140.26	0.00	
3304.00†	8.142	27.417	3282.00	-132.86	282.97	146.79	0.00	
3404.00†	8.142	27.417	3380.99	-138.76	295.54	153.31	0.00	
3504.00†	8.142	27.417	3479.98	-144.66	308.12	159.83	0.00	
3604.00†	8.142	27.417	3578.97	-150.57	320.69	166.35	0.00	
3704.00†	8.142	27.417	3677.97	-156.47	333.26	172.87	0.00	
3804.00†	8.142	27.417	3776.96	-162.37	345.83	179.39	0.00	
3904.00†	8.142	27.417	3875.95	-168.27	358.40	185.91	0.00	
4004.00†	8.142	27.417	3974.94	-174.18	370.98	192.44	0.00	
4104.00†	8.142	27.417	4073.93	-180.08	383.55	198.96	0.00	
4204.00†	8.142	27.417	4172.93	-185.98	396.12	205.48	0.00	
4304.00†	8.142	27.417	4271.92	-191.88	408.69	212.00	0.00	
4404.00†	8.142	27.417	4370.91	-197.79	421.26	218.52	0.00	
4504.00†	8.142	27.417	4469.90	-203.69	433.84	225.04	0.00	
4604.00†	8.142	27.417	4568.89	-209.59	446.41	231.56	0.00	
4704.00†	8.142	27.417	4667.89	-215.50	458.98	238.09	0.00	
4804.00†	8.142	27.417	4766.88	-221.40	471.55	244.61	0.00	
4904.00†	8.142	27.417	4865.87	-227.30	484.12	251.13	0.00	
5004.00†	8.142	27.417	4964.86	-233.20	496.70	257.65	0.00	
5104.00†	8.142	27.417	5063.85	-239.11	509.27	264.17	0.00	
5204.00†	8.142	27.417	5162.85	-245.01	521.84	270.69	0.00	
5304.00†	8.142	27.417	5261.84	-250.91	534.41	277.22	0.00	
5404.00†	8.142	27.417	5360.83	-256.81	546.98	283.74	0.00	
5504.00†	8.142	27.417	5459.82	-262.72	559.56	290.26	0.00	
5604.00†	8.142	27.417	5558.81	-268.62	572.13	296.78	0.00	



# Planned Wellpath Report

GOETZEL 31N-30B-M PWP (REV-C.0)

Page 4 of 8



## REFERENCE WELLPATH IDENTIFICATION

Operator	SYNERGY RESOURCES CORPORATION	Slot	SLOT#06 GOETZEL 31N-30B-M (1913'FNL & 2446'FEL, SEC.29)
Area	COLORADO	Well	GOETZEL 31N-30B-M
Field	WELD COUNTY (NAD83,TRUE NORTH)	Wellbore	GOETZEL 31N-30B-M PWB
Facility	SEC.29-T06N-R66W		

## WELLPATH DATA (163 stations) † = interpolated/extrapolated station

MD [ft]	Inclination [°]	Azimuth [°]	TVD [ft]	Vert Sect [ft]	North [ft]	East [ft]	DLS [°/100ft]	Comments
5704.00†	8.142	27.417	5657.81	-274.52	584.70	303.30	0.00	
5804.00†	8.142	27.417	5756.80	-280.43	597.27	309.82	0.00	
5904.00†	8.142	27.417	5855.79	-286.33	609.85	316.34	0.00	
6004.00†	8.142	27.417	5954.78	-292.23	622.42	322.87	0.00	
6104.00†	8.142	27.417	6053.77	-298.13	634.99	329.39	0.00	
6204.00†	8.142	27.417	6152.77	-304.04	647.56	335.91	0.00	
6304.00†	8.142	27.417	6251.76	-309.94	660.13	342.43	0.00	
6374.04	8.142	27.417	6321.09	-314.07	668.94	347.00	0.00	End of Tangent
6404.00†	7.212	8.347	6350.79	-315.14	672.68	348.25	9.00	
6504.00†	10.446	310.288	6449.77	-308.54	684.78	342.23	9.00	
6604.00†	18.093	290.225	6546.67	-286.49	696.03	320.70	9.00	
6704.00†	26.585	282.236	6639.10	-249.53	706.17	284.19	9.00	
6804.00†	35.317	277.955	6724.78	-198.56	714.93	233.59	9.00	
6904.00†	44.145	275.205	6801.62	-134.85	722.10	170.15	9.00	
7004.00†	53.021	273.215	6867.71	-59.96	727.51	95.44	9.00	
7104.00†	61.924	271.645	6921.43	24.26	731.03	11.29	9.00	
7204.00†	70.842	270.317	6961.45	115.74	732.56	-80.23	9.00	
7304.00†	79.768	269.126	6986.80	212.23	732.07	-176.86	9.00	
7404.00†	88.698	268.001	6996.83	311.35	729.57	-276.22	9.00	
7418.58	90.000	267.839	6997.00†	325.88	729.04	-290.78	9.00	End of 3D Arc
7504.00†	90.000	267.839	6997.00	410.98	725.82	-376.15	0.00	
7604.00†	90.000	267.839	6997.00	510.61	722.05	-476.07	0.00	
7704.00†	90.000	267.839	6997.00	610.24	718.28	-576.00	0.00	
7804.00†	90.000	267.839	6997.00	709.86	714.51	-675.93	0.00	
7904.00†	90.000	267.839	6997.00	809.49	710.74	-775.86	0.00	
8004.00†	90.000	267.839	6997.00	909.12	706.97	-875.79	0.00	
8104.00†	90.000	267.839	6997.00	1008.75	703.20	-975.72	0.00	
8204.00†	90.000	267.839	6997.00	1108.37	699.43	-1075.65	0.00	
8304.00†	90.000	267.839	6997.00	1208.00	695.66	-1175.58	0.00	
8404.00†	90.000	267.839	6997.00	1307.63	691.89	-1275.51	0.00	



# Planned Wellpath Report

GOETZEL 31N-30B-M PWP (REV-C.0)

Page 5 of 8



## REFERENCE WELLPATH IDENTIFICATION

Operator	SYNERGY RESOURCES CORPORATION	Slot	SLOT#06 GOETZEL 31N-30B-M (1913'FNL & 2446'FEL, SEC.29)
Area	COLORADO	Well	GOETZEL 31N-30B-M
Field	WELD COUNTY (NAD83,TRUE NORTH)	Wellbore	GOETZEL 31N-30B-M PWB
Facility	SEC.29-T06N-R66W		

## WELLPATH DATA (163 stations) † = interpolated/extrapolated station

MD [ft]	Inclination [°]	Azimuth [°]	TVD [ft]	Vert Sect [ft]	North [ft]	East [ft]	DLS [°/100ft]	Comments
8504.00†	90.000	267.839	6997.00	1407.26	688.12	-1375.44	0.00	
8604.00†	90.000	267.839	6997.00	1506.88	684.35	-1475.36	0.00	
8704.00†	90.000	267.839	6997.00	1606.51	680.58	-1575.29	0.00	
8804.00†	90.000	267.839	6997.00	1706.14	676.81	-1675.22	0.00	
8904.00†	90.000	267.839	6997.00	1805.77	673.04	-1775.15	0.00	
9004.00†	90.000	267.839	6997.00	1905.39	669.27	-1875.08	0.00	
9104.00†	90.000	267.839	6997.00	2005.02	665.50	-1975.01	0.00	
9204.00†	90.000	267.839	6997.00	2104.65	661.73	-2074.94	0.00	
9304.00†	90.000	267.839	6997.00	2204.28	657.96	-2174.87	0.00	
9404.00†	90.000	267.839	6997.00	2303.90	654.19	-2274.80	0.00	
9504.00†	90.000	267.839	6997.00	2403.53	650.42	-2374.72	0.00	
9604.00†	90.000	267.839	6997.00	2503.16	646.65	-2474.65	0.00	
9704.00†	90.000	267.839	6997.00	2602.79	642.88	-2574.58	0.00	
9804.00†	90.000	267.839	6997.00	2702.41	639.11	-2674.51	0.00	
9904.00†	90.000	267.839	6997.00	2802.04	635.34	-2774.44	0.00	
10004.00†	90.000	267.839	6997.00	2901.67	631.57	-2874.37	0.00	
10104.00†	90.000	267.839	6997.00	3001.30	627.80	-2974.30	0.00	
10204.00†	90.000	267.839	6997.00	3100.92	624.03	-3074.23	0.00	
10304.00†	90.000	267.839	6997.00	3200.55	620.26	-3174.16	0.00	
10404.00†	90.000	267.839	6997.00	3300.18	616.49	-3274.08	0.00	
10504.00†	90.000	267.839	6997.00	3399.81	612.72	-3374.01	0.00	
10604.00†	90.000	267.839	6997.00	3499.43	608.95	-3473.94	0.00	
10704.00†	90.000	267.839	6997.00	3599.06	605.18	-3573.87	0.00	
10804.00†	90.000	267.839	6997.00	3698.69	601.41	-3673.80	0.00	
10904.00†	90.000	267.839	6997.00	3798.32	597.64	-3773.73	0.00	
11004.00†	90.000	267.839	6997.00	3897.95	593.87	-3873.66	0.00	
11104.00†	90.000	267.839	6997.00	3997.57	590.10	-3973.59	0.00	
11204.00†	90.000	267.839	6997.00	4097.20	586.33	-4073.52	0.00	
11304.00†	90.000	267.839	6997.00	4196.83	582.56	-4173.44	0.00	
11404.00†	90.000	267.839	6997.00	4296.46	578.79	-4273.37	0.00	



# Planned Wellpath Report

GOETZEL 31N-30B-M PWP (REV-C.0)

Page 6 of 8



## REFERENCE WELLPATH IDENTIFICATION

Operator	SYNERGY RESOURCES CORPORATION	Slot	SLOT#06 GOETZEL 31N-30B-M (1913'FNL & 2446'FEL, SEC.29)
Area	COLORADO	Well	GOETZEL 31N-30B-M
Field	WELD COUNTY (NAD83,TRUE NORTH)	Wellbore	GOETZEL 31N-30B-M PWB
Facility	SEC.29-T06N-R66W		

## WELLPATH DATA (163 stations) † = interpolated/extrapolated station

MD [ft]	Inclination [°]	Azimuth [°]	TVD [ft]	Vert Sect [ft]	North [ft]	East [ft]	DLS [°/100ft]	Comments
11504.00†	90.000	267.839	6997.00	4396.08	575.02	-4373.30	0.00	
11604.00†	90.000	267.839	6997.00	4495.71	571.25	-4473.23	0.00	
11704.00†	90.000	267.839	6997.00	4595.34	567.48	-4573.16	0.00	
11804.00†	90.000	267.839	6997.00	4694.97	563.71	-4673.09	0.00	
11904.00†	90.000	267.839	6997.00	4794.59	559.94	-4773.02	0.00	
12004.00†	90.000	267.839	6997.00	4894.22	556.17	-4872.95	0.00	
12104.00†	90.000	267.839	6997.00	4993.85	552.40	-4972.88	0.00	
12204.00†	90.000	267.839	6997.00	5093.48	548.63	-5072.80	0.00	
12304.00†	90.000	267.839	6997.00	5193.10	544.86	-5172.73	0.00	
12404.00†	90.000	267.839	6997.00	5292.73	541.09	-5272.66	0.00	
12504.00†	90.000	267.839	6997.00	5392.36	537.32	-5372.59	0.00	
12604.00†	90.000	267.839	6997.00	5491.99	533.55	-5472.52	0.00	
12704.00†	90.000	267.839	6997.00	5591.61	529.78	-5572.45	0.00	
12804.00†	90.000	267.839	6997.00	5691.24	526.01	-5672.38	0.00	
12904.00†	90.000	267.839	6997.00	5790.87	522.24	-5772.31	0.00	
13004.00†	90.000	267.839	6997.00	5890.50	518.47	-5872.24	0.00	
13104.00†	90.000	267.839	6997.00	5990.12	514.70	-5972.16	0.00	
13204.00†	90.000	267.839	6997.00	6089.75	510.93	-6072.09	0.00	
13304.00†	90.000	267.839	6997.00	6189.38	507.16	-6172.02	0.00	
13404.00†	90.000	267.839	6997.00	6289.01	503.39	-6271.95	0.00	
13504.00†	90.000	267.839	6997.00	6388.63	499.62	-6371.88	0.00	
13604.00†	90.000	267.839	6997.00	6488.26	495.85	-6471.81	0.00	
13704.00†	90.000	267.839	6997.00	6587.89	492.08	-6571.74	0.00	
13804.00†	90.000	267.839	6997.00	6687.52	488.31	-6671.67	0.00	
13904.00†	90.000	267.839	6997.00	6787.14	484.54	-6771.60	0.00	
14004.00†	90.000	267.839	6997.00	6886.77	480.77	-6871.53	0.00	
14104.00†	90.000	267.839	6997.00	6986.40	477.00	-6971.45	0.00	
14204.00†	90.000	267.839	6997.00	7086.03	473.23	-7071.38	0.00	
14304.00†	90.000	267.839	6997.00	7185.65	469.46	-7171.31	0.00	
14404.00†	90.000	267.839	6997.00	7285.28	465.69	-7271.24	0.00	



# Planned Wellpath Report

GOETZEL 31N-30B-M PWP (REV-C.0)

Page 7 of 8



## REFERENCE WELLPATH IDENTIFICATION

Operator	SYNERGY RESOURCES CORPORATION	Slot	SLOT#06 GOETZEL 31N-30B-M (1913'FNL & 2446'FEL, SEC.29)
Area	COLORADO	Well	GOETZEL 31N-30B-M
Field	WELD COUNTY (NAD83,TRUE NORTH)	Wellbore	GOETZEL 31N-30B-M PWB
Facility	SEC.29-T06N-R66W		

## WELLPATH DATA (163 stations) † = interpolated/extrapolated station

MD [ft]	Inclination [°]	Azimuth [°]	TVD [ft]	Vert Sect [ft]	North [ft]	East [ft]	DLS [°/100ft]	Comments
14504.00†	90.000	267.839	6997.00	7384.91	461.92	-7371.17	0.00	
14604.00†	90.000	267.839	6997.00	7484.54	458.15	-7471.10	0.00	
14704.00†	90.000	267.839	6997.00	7584.16	454.38	-7571.03	0.00	
14804.00†	90.000	267.839	6997.00	7683.79	450.61	-7670.96	0.00	
14904.00†	90.000	267.839	6997.00	7783.42	446.84	-7770.89	0.00	
15004.00†	90.000	267.839	6997.00	7883.05	443.07	-7870.81	0.00	
15104.00†	90.000	267.839	6997.00	7982.67	439.30	-7970.74	0.00	
15204.00†	90.000	267.839	6997.00	8082.30	435.53	-8070.67	0.00	
15304.00†	90.000	267.839	6997.00	8181.93	431.76	-8170.60	0.00	
15404.00†	90.000	267.839	6997.00	8281.56	427.99	-8270.53	0.00	
15504.00†	90.000	267.839	6997.00	8381.18	424.22	-8370.46	0.00	
15604.00†	90.000	267.839	6997.00	8480.81	420.45	-8470.39	0.00	
15699.53	90.000	267.839	6997.00 <sup>2</sup>	8575.98	416.85	-8565.85	0.00	End of Tangent

## HOLE & CASING SECTIONS - Ref Wellbore: GOETZEL 31N-30B-M PWB Ref Wellpath: GOETZEL 31N-30B-M PWP (REV-C.0)

String/Diameter	Start MD [ft]	End MD [ft]	Interval [ft]	Start TVD [ft]	End TVD [ft]	Start N/S [ft]	Start E/W [ft]	End N/S [ft]	End E/W [ft]
13.5in Open Hole	4.00	1700.00	1696.00	4.00	1694.17	0.00	0.00	81.32	42.18
9.625in Casing Surface	4.00	1700.00	1696.00	4.00	1694.17	0.00	0.00	81.32	42.18
8.5in Open Hole	1700.00	15699.53	13999.53	1694.17	6997.00	81.32	42.18	416.85	-8565.85



# Planned Wellpath Report

GOETZEL 31N-30B-M PWP (REV-C.0)

Page 8 of 8



## REFERENCE WELLPATH IDENTIFICATION

Operator	SYNERGY RESOURCES CORPORATION	Slot	SLOT#06 GOETZEL 31N-30B-M (1913'FNL & 2446'FEL, SEC.29)
Area	COLORADO	Well	GOETZEL 31N-30B-M
Field	WELD COUNTY (NAD83,TRUE NORTH)	Wellbore	GOETZEL 31N-30B-M PWB
Facility	SEC.29-T06N-R66W		

## TARGETS

Name	MD [ft]	TVD [ft]	North [ft]	East [ft]	Grid East [US ft]	Grid North [US ft]	Latitude	Longitude	Shape
SEC.29-T06N-R66W NORTHERN		-16.00	99.86	0.56	3194449.66	1411671.99	40°27'40.817"N	104°48'04.259"W	polygon
SEC.29-T06N-R66W SOUTHERN		-16.00	99.86	0.56	3194449.66	1411671.99	40°27'40.817"N	104°48'04.259"W	polygon
SEC.30-T06N-R66W NORTHERN		-16.00	99.86	0.56	3194449.66	1411671.99	40°27'40.817"N	104°48'04.259"W	polygon
SEC.30-T06N-R66W SOUTHERN		-16.00	99.86	0.56	3194449.66	1411671.99	40°27'40.817"N	104°48'04.259"W	polygon
GOETZEL 31N-30B-M BHL REV-1 (1183'FNL & 510'FWL, SEC.30)		6997.00	435.67	-8205.76	3186241.26	1411943.10	40°27'44.122"N	104°49'50.426"W	circle
2) GOETZEL 31N-30B-M BHL REV-2 (1183'FNL & 150'FWL, SEC.30)	15699.53	6997.00	416.85	-8565.85	3185881.36	1411921.44	40°27'43.934"N	104°49'55.085"W	point
1) GOETZEL 31N-30B-M TOP REV-1 (1178'FNL & 2585'FWL, SEC.29)	7418.58	6997.00	729.04	-290.78	3194153.38	1412298.82	40°27'47.034"N	104°48'08.028"W	circle

## SURVEY PROGRAM - Ref Wellbore: GOETZEL 31N-30B-M PWB Ref Wellpath: GOETZEL 31N-30B-M PWP (REV-C.0)

Start MD [ft]	End MD [ft]	Positional Uncertainty Model	Log Name/Comment	Wellbore
4.00	1700.00	Custom BHI NaviTrak (Standard Rotating) (Rockies 0.03Gt model)		GOETZEL 31N-30B-M PWB
1700.00	15700.00	Custom BHI AutoTrak Curve (IFR1, Short) (Rockies 0.03Gt model)		GOETZEL 31N-30B-M PWB