

SYNERGY RESOURCES CORPORATION

Location: COLORADO Slot: SLOT#08 GOETZEL 31N-30C-M (2013'FNL & 2446'FEL, SEC.29)
Field: WELD COUNTY (NAD83,TRUE NORTH) Well: GOETZEL 31N-30C-M
Facility: SEC.29-T06N-R66W Wellbore: GOETZEL 31N-30C-M PWB

Plot reference wellpath is GOETZEL 31N-30C-M PWP (REV-C.0)	Grid System: NAD83 / Lambert Colorado SP, Northern Zone (501), US feet
True vertical depths are referenced to PROPETRO 12 (4) (RKB)	* = Wellpath was transformed from a different geoidic datum
Measured depths are referenced to PROPETRO 12 (4) (RKB)	North Reference: True north
PROPETRO 12 (4) (RKB) to Mean Sea Level: 4732 feet	Scale: True distance
Mean Sea Level to Mud line (At Slot: SLOTH08 GOETZEL 31N-30C-M (2013'FNL & 2446'FEL, SEC.29)): 0 feet	Depths are in feet
Coordinates are in feet referenced to Slot	Created by: wajrign on 2017-02-24
	Database: WA_DEN_Denver, Deln

Location Information

Facility Name			Grid East (US ft)	Grid North (US ft)	Latitude	Longitude
SEC.29-T06N-R66W			3194449.846	1411672.008	40°27'40.817"N	104°48'04.259"W
Slot	Local N (ft)	Local E (ft)	Grid East (US ft)	Grid North (US ft)	Latitude	Longitude
SLOT#08 GOETZEL 31N-30C-M (2013'FNL & 2446'FEL, SEC.29)	-200.07	-1.08	3194450.141	1411471.943	40°27'38.840"N	104°48'04.273"W
PROPETRO 12 (4) (RKB) to Mud line (At Slot: SLOTH08 GOETZEL 31N-30C-M (2013'FNL & 2446'FEL, SEC.29))						4732ft
Mean Sea Level to Mud line (At Slot: SLOTH08 GOETZEL 31N-30C-M (2013'FNL & 2446'FEL, SEC.29))						0ft
PROPETRO 12 (4) (RKB) to Mean Sea Level						4732ft

Tie-On Position

MD (ft)	Inc (°)	Az (°)	TVD (ft)	Local N (ft)	Local E (ft)	Grid East (US ft)	Grid North (US ft)	Latitude	Longitude
4.00	0.000	38.825	4.00	0.00	0.00	3194450.14	1411471.94	40°27'38.840"N	104°48'04.273"W

Well Profile Data

Design Comment	MD (ft)	Inc (°)	Az (°)	TVD (ft)	Local N (ft)	Local E (ft)	DLS (°/100ft)	VS (ft)
Tie On	4.00	0.000	38.825	4.00	0.00	0.00	0.00	0.00
End of Tangent	1050.00	0.000	38.825	1050.00	0.00	0.00	0.00	0.00
End of Build	1352.88	6.058	38.825	1352.31	12.46	10.03	2.00	-9.92
End of Tangent	6406.84	6.058	38.825	6378.06	427.96	344.40	0.00	-340.67
End of 3D Arc	7451.34	90.000	267.380	7057.00	452.89	-292.47	9.00	296.40
End of Tangent	15731.87	90.000	267.380	7057.00	74.39	-8564.35	0.00	8564.67

Survey Program

Start MD (ft)	End MD (ft)	Tool	Model	Log Name/Comment	Wellbore
4.00	1700.00	BHI NavTrak	Custom BHI NavTrak (Standard Rotating) (Rockies 0.03Gt model)		GOETZEL 31N-30C-M PWB
1700.00	15732.00	BHI AutoTrak Curve	Custom BHI AutoTrak Curve (IFR1, Short) (Rockies 0.03Gt model)		GOETZEL 31N-30C-M PWB

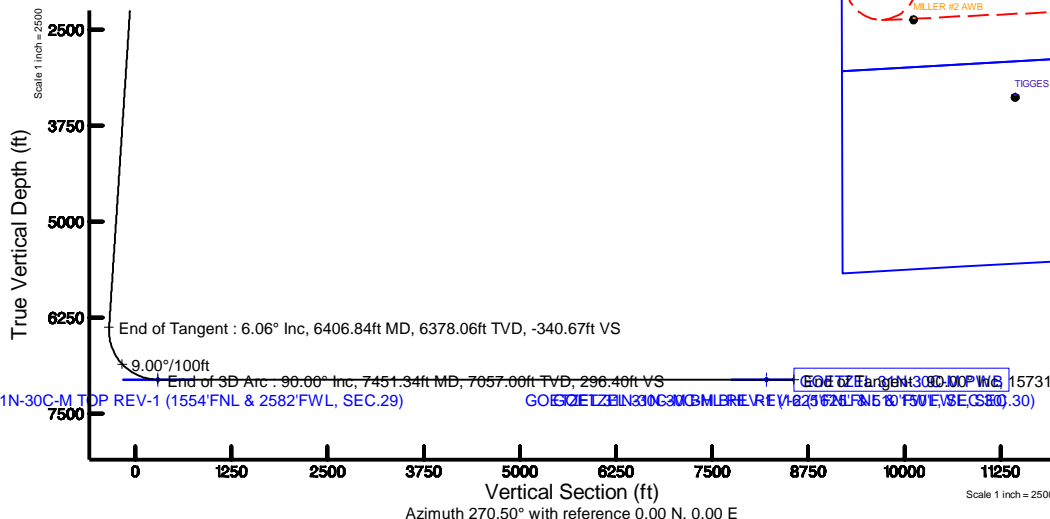
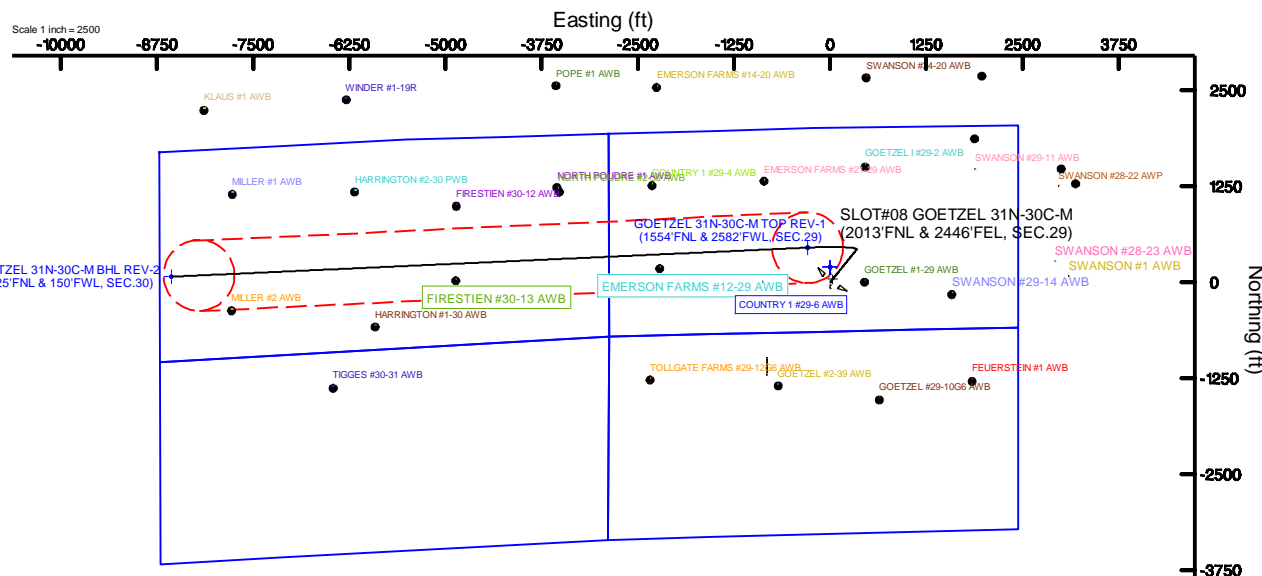
Targets

Name	MD (ft)	TVD (ft)	Local N (ft)	Local E (ft)	Grid East (US ft)	Grid North (US ft)	Latitude	Longitude
SEC.29-T06N-R66W NORTHERN		-16.00	200.05	1.10	3194449.66	1411671.99	40°27'40.817"N	104°48'04.259"W
SEC.29-T06N-R66W SOUTHERN		-16.00	200.05	1.10	3194449.66	1411671.99	40°27'40.817"N	104°48'04.259"W
SEC.30-T06N-R66W NORTHERN		-16.00	200.05	1.10	3194449.66	1411671.99	40°27'40.817"N	104°48'04.259"W
SEC.30-T06N-R66W SOUTHERN		-16.00	200.05	1.10	3194449.66	1411671.99	40°27'40.817"N	104°48'04.259"W
GOETZEL 31N-30C-MBHL REV-1 (1625'FNL & 510'FWL, SEC.30)		7057.00	93.21	-8204.26	3186245.72	1411500.50	40°27'39.748"N	104°49'50.412"W
GOETZEL 31N-30C-MBHL REV-2 (1625'FNL & 150'FWL, SEC.30)	15731.87	7057.00	74.39	-8564.35	3185885.80	1411478.84	40°27'39.560"N	104°49'55.070"W
GOETZEL 31N-30C-MTOP REV-1 (1554'FNL & 2582'FWL, SEC.29)	7451.34	7057.00	452.89	-292.47	3194154.12	1411922.49	40°27'43.315"N	104°48'08.057"W



BGGM (1900.0 to 2018.0) Dip: 66.92° Field: 52499.6 nT
Magnetic North is 8.43 degrees East of True North (at 2/22/2017)

To correct azimuth from Magnetic to True add 8.43 degrees



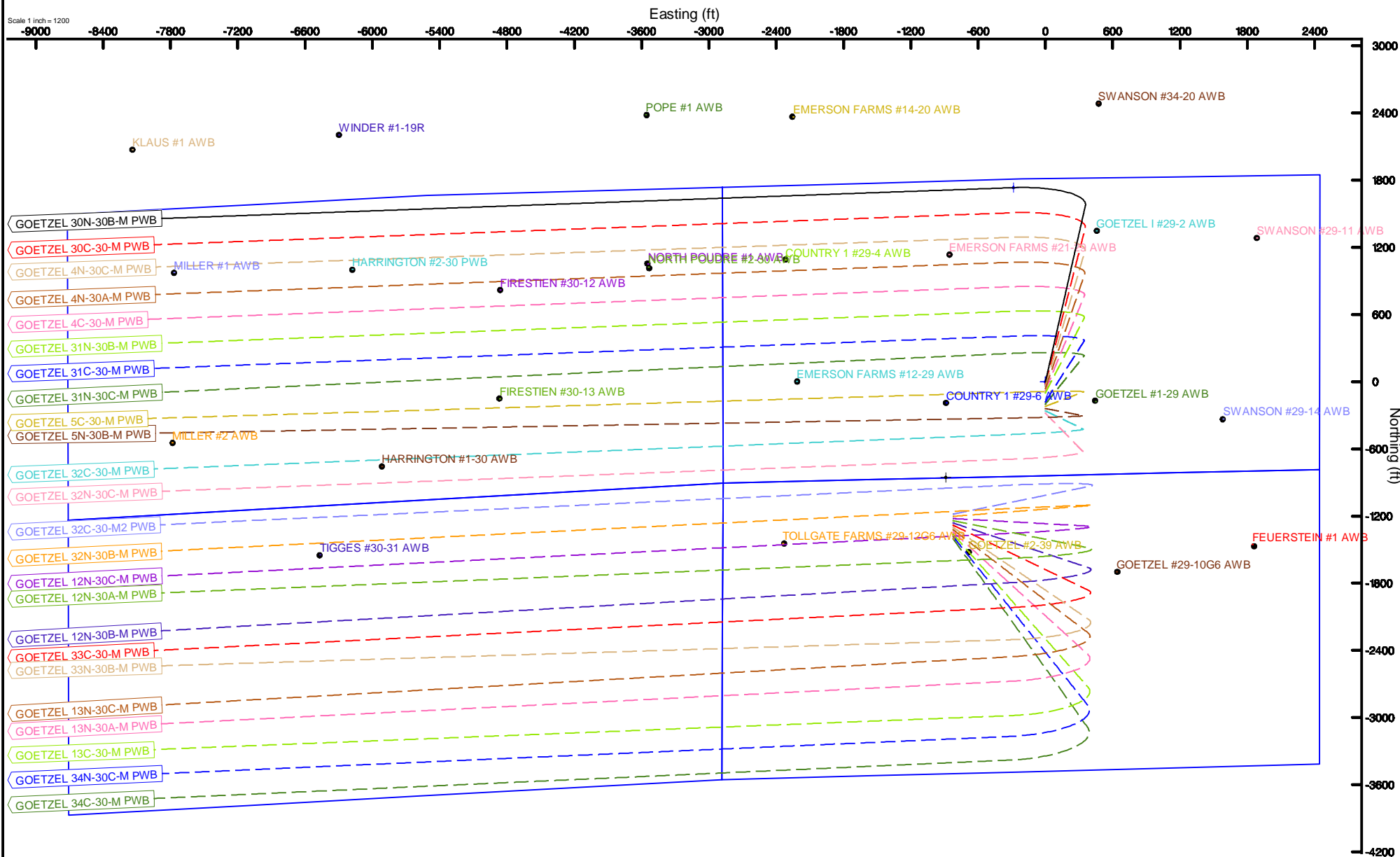
SYNERGY RESOURCES CORPORATION

Location: COLORADO Slot: SLOT#01 GOETZEL 30N-30B-M (1813'FNL & 2445'FEL, SEC.29)
Field: WELD COUNTY (NAD83,TRUE NORTH) Well: GOETZEL 30N-30B-M
Facility: SEC.29-T06N-R66W Wellbore: GOETZEL 30N-30B-M-PWB



BGGM (1900.0 to 2018.0) Dip: 66.92° Field: 52499.6 nT
Magnetic North is 8.43 degrees East of True North (at 2/22/2017)

To correct azimuth from Magnetic to True add 8.43 degrees



GOETZEL_31N-30C-M_PWP__REV-C.0_.las

~VERSION INFORMATION

VERS. 2.0 : CWLS LOG ASCII STANDARD-VERSION 2.0

WRAP. NO : ASCII DATA SECTION CONTAINS ONE ROW PER WELLPATH STATION

~WELL INFORMATION

#MNEM	.UNITS	DATA	:DESCRIPTION
#----	.-----	----	:-----
STRT	.ft	0.00	:START MD
STOP	.ft	15731.87	:STOP MD
STEP	.ft	0.0	:STEP (non-uniform increment)
NULL	.	-999.99	:NULL
COMP	.	SYNERGY RESOURCES CORPORATION	:OPERATOR
WELL	.	GOETZEL 31N-30C-M	:WELL
FLD	.	WELD COUNTY (NAD83,TRUE NORTH)	:FIELD
LOC	.	COLORADO	:AREA (aka: Location)
CNTY	.	N/A	:COUNTY
STAT	.	N/A	:STATE
CTRY	.	N/A	:COUNTRY
SRVC	.	Baker Hughes	:CONTRACTOR
DATE	.	11/10/2016	:LOG REV DATE
API	.		:API NUMBER

~OTHER INFORMATION

#Software: WellArchitect(R) Version 5.0

#MNEM	.UNITS	DATA	:DESCRIPTION
#----	.-----	----	:-----
WPTYPE	.	PLANNED WELLPATH	:WELLPATH TYPE
FACILITY	.	SEC.29-T06N-R66W	:FACILITY
SLOT	.	SLOT#08 GOETZEL 31N-30C-M (2013'FNL & 2446'FEL, SEC.29):SLOT	:SLOT
WELLBORE	.	GOETZEL 31N-30C-M PWB	:WELLBORE
WELLPATH	.	GOETZEL 31N-30C-M PWP (REV-C.0)	:WELLPATH
MDREFPT	.	PROPETRO 12 (4') (RKB)	:MD REFERENCE POINT
TVDREFPT	.	PROPETRO 12 (4') (RKB)	:TVD REFERENCE POINT
LCLREFPT	.	SLOT	:LOCAL COORDINATE REFERENCE PT
VSAZIMUTH	.deg	270.50	:VERTICAL SECTION AZIMUTH
VSORIGN	.ft	0.00	:VERTICAL SECTION ORIGIN NORTH
VSORIGE	.ft	0.00	:VERTICAL SECTION ORIGIN EAST

~CURVE (WELLPATH) INFORMATION

#MNEM	.UNITS	:DESCRIPTION
#----	.-----	:-----
DEPT	.ft	:MEASURED DEPTH
INC	.deg	:INCLINATION
AZI	.deg	:AZIMUTH

GOETZEL_31N-30C-M_PWP__REV-C.0_.las

TVD .ft :TRUE VERTICAL DEPTH
 SECT .ft :CROSS SECTION (CURTAIN/VERTICAL)
 LOCALN .ft :LOCAL NORTH
 LOCALE .ft :LOCAL EAST
 LAT .deg :LATITUDE
 LONG .deg :LONGITUDE
 DLS .deg/100ft :DOGLEG SEVERITY

~ASCII DATA

0.00	0.00	38.83	0.00	0.00	0.00	0.00	40.4607889	-104.8011869	0.00
4.00	0.00	38.83	4.00	0.00	0.00	0.00	40.4607889	-104.8011869	0.00
104.00	0.00	38.83	104.00	0.00	0.00	0.00	40.4607889	-104.8011869	0.00
204.00	0.00	38.83	204.00	0.00	0.00	0.00	40.4607889	-104.8011869	0.00
304.00	0.00	38.83	304.00	0.00	0.00	0.00	40.4607889	-104.8011869	0.00
404.00	0.00	38.83	404.00	0.00	0.00	0.00	40.4607889	-104.8011869	0.00
504.00	0.00	38.83	504.00	0.00	0.00	0.00	40.4607889	-104.8011869	0.00
604.00	0.00	38.83	604.00	0.00	0.00	0.00	40.4607889	-104.8011869	0.00
704.00	0.00	38.83	704.00	0.00	0.00	0.00	40.4607889	-104.8011869	0.00
804.00	0.00	38.83	804.00	0.00	0.00	0.00	40.4607889	-104.8011869	0.00
904.00	0.00	38.83	904.00	0.00	0.00	0.00	40.4607889	-104.8011869	0.00
1004.00	0.00	38.83	1004.00	0.00	0.00	0.00	40.4607889	-104.8011869	0.00
1050.00	0.00	38.83	1050.00	0.00	0.00	0.00	40.4607889	-104.8011869	0.00
1104.00	1.08	38.83	1104.00	-0.32	0.40	0.32	40.4607900	-104.8011858	2.00
1204.00	3.08	38.83	1203.93	-2.57	3.22	2.59	40.4607977	-104.8011776	2.00
1304.00	5.08	38.83	1303.67	-6.98	8.77	7.05	40.4608130	-104.8011616	2.00
1352.88	6.06	38.83	1352.31	-9.92	12.46	10.03	40.4608231	-104.8011509	2.00
1404.00	6.06	38.83	1403.15	-13.27	16.66	13.41	40.4608346	-104.8011388	0.00
1504.00	6.06	38.83	1502.59	-19.81	24.89	20.03	40.4608572	-104.8011150	0.00
1604.00	6.06	38.83	1602.03	-26.35	33.11	26.64	40.4608798	-104.8010912	0.00
1704.00	6.06	38.83	1701.48	-32.90	41.33	33.26	40.4609023	-104.8010674	0.00
1804.00	6.06	38.83	1800.92	-39.44	49.55	39.87	40.4609249	-104.8010437	0.00
1904.00	6.06	38.83	1900.36	-45.99	57.77	46.49	40.4609475	-104.8010199	0.00
2004.00	6.06	38.83	1999.80	-52.53	65.99	53.11	40.4609700	-104.8009961	0.00
2104.00	6.06	38.83	2099.24	-59.08	74.21	59.72	40.4609926	-104.8009723	0.00
2204.00	6.06	38.83	2198.68	-65.62	82.44	66.34	40.4610152	-104.8009485	0.00
2304.00	6.06	38.83	2298.13	-72.16	90.66	72.95	40.4610377	-104.8009248	0.00
2404.00	6.06	38.83	2397.57	-78.71	98.88	79.57	40.4610603	-104.8009010	0.00
2504.00	6.06	38.83	2497.01	-85.25	107.10	86.19	40.4610829	-104.8008772	0.00
2604.00	6.06	38.83	2596.45	-91.80	115.32	92.80	40.4611054	-104.8008534	0.00
2704.00	6.06	38.83	2695.89	-98.34	123.54	99.42	40.4611280	-104.8008297	0.00
2804.00	6.06	38.83	2795.33	-104.89	131.76	106.03	40.4611506	-104.8008059	0.00
2904.00	6.06	38.83	2894.78	-111.43	139.98	112.65	40.4611731	-104.8007821	0.00
3004.00	6.06	38.83	2994.22	-117.97	148.21	119.27	40.4611957	-104.8007583	0.00
3104.00	6.06	38.83	3093.66	-124.52	156.43	125.88	40.4612183	-104.8007346	0.00

GOETZEL_31N-30C-M_PWP__REV-C.0_.las

3204.00	6.06	38.83	3193.10	-131.06	164.65	132.50	40.4612408	-104.8007108	0.00
3304.00	6.06	38.83	3292.54	-137.61	172.87	139.11	40.4612634	-104.8006870	0.00
3404.00	6.06	38.83	3391.98	-144.15	181.09	145.73	40.4612860	-104.8006632	0.00
3504.00	6.06	38.83	3491.43	-150.70	189.31	152.35	40.4613085	-104.8006395	0.00
3604.00	6.06	38.83	3590.87	-157.24	197.53	158.96	40.4613311	-104.8006157	0.00
3704.00	6.06	38.83	3690.31	-163.78	205.75	165.58	40.4613537	-104.8005919	0.00
3804.00	6.06	38.83	3789.75	-170.33	213.98	172.19	40.4613762	-104.8005681	0.00
3904.00	6.06	38.83	3889.19	-176.87	222.20	178.81	40.4613988	-104.8005444	0.00
4004.00	6.06	38.83	3988.63	-183.42	230.42	185.43	40.4614214	-104.8005206	0.00
4104.00	6.06	38.83	4088.07	-189.96	238.64	192.04	40.4614439	-104.8004968	0.00
4204.00	6.06	38.83	4187.52	-196.51	246.86	198.66	40.4614665	-104.8004730	0.00
4304.00	6.06	38.83	4286.96	-203.05	255.08	205.27	40.4614891	-104.8004493	0.00
4404.00	6.06	38.83	4386.40	-209.59	263.30	211.89	40.4615116	-104.8004255	0.00
4504.00	6.06	38.83	4485.84	-216.14	271.53	218.51	40.4615342	-104.8004017	0.00
4604.00	6.06	38.83	4585.28	-222.68	279.75	225.12	40.4615568	-104.8003779	0.00
4704.00	6.06	38.83	4684.72	-229.23	287.97	231.74	40.4615793	-104.8003542	0.00
4804.00	6.06	38.83	4784.17	-235.77	296.19	238.35	40.4616019	-104.8003304	0.00
4904.00	6.06	38.83	4883.61	-242.32	304.41	244.97	40.4616245	-104.8003066	0.00
5004.00	6.06	38.83	4983.05	-248.86	312.63	251.59	40.4616470	-104.8002828	0.00
5104.00	6.06	38.83	5082.49	-255.40	320.85	258.20	40.4616696	-104.8002591	0.00
5204.00	6.06	38.83	5181.93	-261.95	329.07	264.82	40.4616922	-104.8002353	0.00
5304.00	6.06	38.83	5281.37	-268.49	337.30	271.43	40.4617147	-104.8002115	0.00
5404.00	6.06	38.83	5380.82	-275.04	345.52	278.05	40.4617373	-104.8001877	0.00
5504.00	6.06	38.83	5480.26	-281.58	353.74	284.66	40.4617599	-104.8001640	0.00
5604.00	6.06	38.83	5579.70	-288.13	361.96	291.28	40.4617824	-104.8001402	0.00
5704.00	6.06	38.83	5679.14	-294.67	370.18	297.90	40.4618050	-104.8001164	0.00
5804.00	6.06	38.83	5778.58	-301.21	378.40	304.51	40.4618275	-104.8000926	0.00
5904.00	6.06	38.83	5878.02	-307.76	386.62	311.13	40.4618501	-104.8000688	0.00
6004.00	6.06	38.83	5977.47	-314.30	394.85	317.74	40.4618727	-104.8000451	0.00
6104.00	6.06	38.83	6076.91	-320.85	403.07	324.36	40.4618952	-104.8000213	0.00
6204.00	6.06	38.83	6176.35	-327.39	411.29	330.98	40.4619178	-104.7999975	0.00
6304.00	6.06	38.83	6275.79	-333.94	419.51	337.59	40.4619404	-104.7999737	0.00
6404.00	6.06	38.83	6375.23	-340.48	427.73	344.21	40.4619629	-104.7999500	0.00
6406.84	6.06	38.83	6378.06	-340.67	427.96	344.40	40.4619636	-104.7999493	0.00
6504.00	6.57	311.11	6474.81	-339.63	435.62	343.42	40.4619846	-104.7999528	9.00
6604.00	14.46	285.35	6573.11	-323.19	442.70	327.04	40.4620040	-104.8000117	9.00
6704.00	23.17	278.09	6667.69	-291.56	448.79	295.47	40.4620207	-104.8001251	9.00
6804.00	32.03	274.69	6756.22	-245.52	453.73	249.47	40.4620343	-104.8002904	9.00
6904.00	40.95	272.64	6836.54	-186.20	457.42	190.18	40.4620444	-104.8005035	9.00
7004.00	49.89	271.22	6906.66	-115.07	459.75	119.07	40.4620508	-104.8007590	9.00
7104.00	58.85	270.14	6964.86	-33.88	460.67	37.88	40.4620534	-104.8010508	9.00
7204.00	67.81	269.24	7009.70	55.38	460.15	-51.38	40.4620519	-104.8013716	9.00
7304.00	76.78	268.45	7040.08	150.51	458.22	-146.53	40.4620466	-104.8017135	9.00
7404.00	85.75	267.72	7055.25	249.16	454.91	-245.22	40.4620376	-104.8020682	9.00

GOETZEL_31N-30C-M_PWP__REV-C.0_.las									
7451.34	90.00	267.38	7057.00	296.40	452.89	-292.47	40.4620320	-104.8022380	9.00
7504.00	90.00	267.38	7057.00	348.97	450.48	-345.07	40.4620254	-104.8024270	0.00
7604.00	90.00	267.38	7057.00	448.83	445.91	-444.97	40.4620128	-104.8027860	0.00
7704.00	90.00	267.38	7057.00	548.68	441.34	-544.86	40.4620003	-104.8031450	0.00
7804.00	90.00	267.38	7057.00	648.53	436.77	-644.76	40.4619877	-104.8035040	0.00
7904.00	90.00	267.38	7057.00	748.38	432.20	-744.66	40.4619752	-104.8038630	0.00
8004.00	90.00	267.38	7057.00	848.23	427.63	-844.55	40.4619626	-104.8042220	0.00
8104.00	90.00	267.38	7057.00	948.09	423.05	-944.45	40.4619501	-104.8045810	0.00
8204.00	90.00	267.38	7057.00	1047.94	418.48	-1044.34	40.4619375	-104.8049400	0.00
8304.00	90.00	267.38	7057.00	1147.79	413.91	-1144.24	40.4619250	-104.8052990	0.00
8404.00	90.00	267.38	7057.00	1247.64	409.34	-1244.13	40.4619124	-104.8056580	0.00
8504.00	90.00	267.38	7057.00	1347.49	404.77	-1344.03	40.4618998	-104.8060169	0.00
8604.00	90.00	267.38	7057.00	1447.35	400.20	-1443.92	40.4618873	-104.8063759	0.00
8704.00	90.00	267.38	7057.00	1547.20	395.63	-1543.82	40.4618747	-104.8067349	0.00
8804.00	90.00	267.38	7057.00	1647.05	391.06	-1643.71	40.4618621	-104.8070939	0.00
8904.00	90.00	267.38	7057.00	1746.90	386.49	-1743.61	40.4618496	-104.8074529	0.00
9004.00	90.00	267.38	7057.00	1846.75	381.92	-1843.51	40.4618370	-104.8078119	0.00
9104.00	90.00	267.38	7057.00	1946.61	377.35	-1943.40	40.4618244	-104.8081709	0.00
9204.00	90.00	267.38	7057.00	2046.46	372.77	-2043.30	40.4618119	-104.8085299	0.00
9304.00	90.00	267.38	7057.00	2146.31	368.20	-2143.19	40.4617993	-104.8088889	0.00
9404.00	90.00	267.38	7057.00	2246.16	363.63	-2243.09	40.4617867	-104.8092479	0.00
9504.00	90.00	267.38	7057.00	2346.01	359.06	-2342.98	40.4617742	-104.8096068	0.00
9604.00	90.00	267.38	7057.00	2445.87	354.49	-2442.88	40.4617616	-104.8099658	0.00
9704.00	90.00	267.38	7057.00	2545.72	349.92	-2542.77	40.4617490	-104.8103248	0.00
9804.00	90.00	267.38	7057.00	2645.57	345.35	-2642.67	40.4617364	-104.8106838	0.00
9904.00	90.00	267.38	7057.00	2745.42	340.78	-2742.57	40.4617239	-104.8110428	0.00
10004.00	90.00	267.38	7057.00	2845.27	336.21	-2842.46	40.4617113	-104.8114018	0.00
10104.00	90.00	267.38	7057.00	2945.13	331.64	-2942.36	40.4616987	-104.8117608	0.00
10204.00	90.00	267.38	7057.00	3044.98	327.07	-3042.25	40.4616861	-104.8121198	0.00
10304.00	90.00	267.38	7057.00	3144.83	322.49	-3142.15	40.4616735	-104.8124788	0.00
10404.00	90.00	267.38	7057.00	3244.68	317.92	-3242.04	40.4616610	-104.8128377	0.00
10504.00	90.00	267.38	7057.00	3344.53	313.35	-3341.94	40.4616484	-104.8131967	0.00
10604.00	90.00	267.38	7057.00	3444.39	308.78	-3441.83	40.4616358	-104.8135557	0.00
10704.00	90.00	267.38	7057.00	3544.24	304.21	-3541.73	40.4616232	-104.8139147	0.00
10804.00	90.00	267.38	7057.00	3644.09	299.64	-3641.62	40.4616106	-104.8142737	0.00
10904.00	90.00	267.38	7057.00	3743.94	295.07	-3741.52	40.4615980	-104.8146327	0.00
11004.00	90.00	267.38	7057.00	3843.79	290.50	-3841.42	40.4615854	-104.8149917	0.00
11104.00	90.00	267.38	7057.00	3943.65	285.93	-3941.31	40.4615729	-104.8153507	0.00
11204.00	90.00	267.38	7057.00	4043.50	281.36	-4041.21	40.4615603	-104.8157096	0.00
11304.00	90.00	267.38	7057.00	4143.35	276.78	-4141.10	40.4615477	-104.8160686	0.00
11404.00	90.00	267.38	7057.00	4243.20	272.21	-4241.00	40.4615351	-104.8164276	0.00
11504.00	90.00	267.38	7057.00	4343.05	267.64	-4340.89	40.4615225	-104.8167866	0.00
11604.00	90.00	267.38	7057.00	4442.91	263.07	-4440.79	40.4615099	-104.8171456	0.00
11704.00	90.00	267.38	7057.00	4542.76	258.50	-4540.68	40.4614973	-104.8175046	0.00

GOETZEL_31N-30C-M_PWP__REV-C.0_.las									
11804.00	90.00	267.38	7057.00	4642.61	253.93	-4640.58	40.4614847	-104.8178636	0.00
11904.00	90.00	267.38	7057.00	4742.46	249.36	-4740.47	40.4614721	-104.8182226	0.00
12004.00	90.00	267.38	7057.00	4842.31	244.79	-4840.37	40.4614595	-104.8185815	0.00
12104.00	90.00	267.38	7057.00	4942.17	240.22	-4940.27	40.4614469	-104.8189405	0.00
12204.00	90.00	267.38	7057.00	5042.02	235.65	-5040.16	40.4614343	-104.8192995	0.00
12304.00	90.00	267.38	7057.00	5141.87	231.08	-5140.06	40.4614217	-104.8196585	0.00
12404.00	90.00	267.38	7057.00	5241.72	226.50	-5239.95	40.4614091	-104.8200175	0.00
12504.00	90.00	267.38	7057.00	5341.57	221.93	-5339.85	40.4613965	-104.8203765	0.00
12604.00	90.00	267.38	7057.00	5441.43	217.36	-5439.74	40.4613839	-104.8207355	0.00
12704.00	90.00	267.38	7057.00	5541.28	212.79	-5539.64	40.4613713	-104.8210944	0.00
12804.00	90.00	267.38	7057.00	5641.13	208.22	-5639.53	40.4613587	-104.8214534	0.00
12904.00	90.00	267.38	7057.00	5740.98	203.65	-5739.43	40.4613460	-104.8218124	0.00
13004.00	90.00	267.38	7057.00	5840.83	199.08	-5839.32	40.4613334	-104.8221714	0.00
13104.00	90.00	267.38	7057.00	5940.69	194.51	-5939.22	40.4613208	-104.8225304	0.00
13204.00	90.00	267.38	7057.00	6040.54	189.94	-6039.12	40.4613082	-104.8228894	0.00
13304.00	90.00	267.38	7057.00	6140.39	185.37	-6139.01	40.4612956	-104.8232484	0.00
13404.00	90.00	267.38	7057.00	6240.24	180.80	-6238.91	40.4612830	-104.8236073	0.00
13504.00	90.00	267.38	7057.00	6340.09	176.22	-6338.80	40.4612704	-104.8239663	0.00
13604.00	90.00	267.38	7057.00	6439.95	171.65	-6438.70	40.4612577	-104.8243253	0.00
13704.00	90.00	267.38	7057.00	6539.80	167.08	-6538.59	40.4612451	-104.8246843	0.00
13804.00	90.00	267.38	7057.00	6639.65	162.51	-6638.49	40.4612325	-104.8250433	0.00
13904.00	90.00	267.38	7057.00	6739.50	157.94	-6738.38	40.4612199	-104.8254023	0.00
14004.00	90.00	267.38	7057.00	6839.35	153.37	-6838.28	40.4612073	-104.8257612	0.00
14104.00	90.00	267.38	7057.00	6939.21	148.80	-6938.18	40.4611946	-104.8261202	0.00
14204.00	90.00	267.38	7057.00	7039.06	144.23	-7038.07	40.4611820	-104.8264792	0.00
14304.00	90.00	267.38	7057.00	7138.91	139.66	-7137.97	40.4611694	-104.8268382	0.00
14404.00	90.00	267.38	7057.00	7238.76	135.09	-7237.86	40.4611568	-104.8271972	0.00
14504.00	90.00	267.38	7057.00	7338.61	130.52	-7337.76	40.4611441	-104.8275562	0.00
14604.00	90.00	267.38	7057.00	7438.47	125.94	-7437.65	40.4611315	-104.8279151	0.00
14704.00	90.00	267.38	7057.00	7538.32	121.37	-7537.55	40.4611189	-104.8282741	0.00
14804.00	90.00	267.38	7057.00	7638.17	116.80	-7637.44	40.4611063	-104.8286331	0.00
14904.00	90.00	267.38	7057.00	7738.02	112.23	-7737.34	40.4610936	-104.8289921	0.00
15004.00	90.00	267.38	7057.00	7837.87	107.66	-7837.23	40.4610810	-104.8293511	0.00
15104.00	90.00	267.38	7057.00	7937.73	103.09	-7937.13	40.4610684	-104.8297101	0.00
15204.00	90.00	267.38	7057.00	8037.58	98.52	-8037.03	40.4610557	-104.8300690	0.00
15304.00	90.00	267.38	7057.00	8137.43	93.95	-8136.92	40.4610431	-104.8304280	0.00
15404.00	90.00	267.38	7057.00	8237.28	89.38	-8236.82	40.4610304	-104.8307870	0.00
15504.00	90.00	267.38	7057.00	8337.13	84.81	-8336.71	40.4610178	-104.8311460	0.00
15604.00	90.00	267.38	7057.00	8436.99	80.23	-8436.61	40.4610052	-104.8315050	0.00
15704.00	90.00	267.38	7057.00	8536.84	75.66	-8536.50	40.4609925	-104.8318639	0.00
15731.87	90.00	267.38	7057.00	8564.67	74.39	-8564.35	40.4609890	-104.8319640	0.00



Planned Wellpath Report

GOETZEL 31N-30C-M PWP (REV-C.0)

Page 1 of 8



REFERENCE WELLPATH IDENTIFICATION

Operator	SYNERGY RESOURCES CORPORATION	Slot	SLOT#08 GOETZEL 31N-30C-M (2013'FNL & 2446'FEL, SEC.29)
Area	COLORADO	Well	GOETZEL 31N-30C-M
Field	WELD COUNTY (NAD83,TRUE NORTH)	Wellbore	GOETZEL 31N-30C-M PWB
Facility	SEC.29-T06N-R66W		

REPORT SETUP INFORMATION

Projection System	NAD83 / Lambert Colorado SP, Northern Zone (501), US feet	Software System	WellArchitect® 5.0
North Reference	True	User	Wagnjam
Scale	0.999964	Report Generated	2/24/2017 at 5:37:33 PM
Convergence at slot	0.46° East	Database/Source file	WA_DEN_Denver_Defn/GOETZEL_31N-30C-M_PWP__REV-C.0_.xml

WELLPATH LOCATION

	Local coordinates		Grid coordinates		Geographic coordinates	
	North[ft]	East[ft]	Easting[US ft]	Northing[US ft]	Latitude	Longitude
Slot Location	-200.07	-1.08	3194450.14	1411471.94	40°27'38.840"N	104°48'04.273"W
Facility Reference Pt			3194449.65	1411672.01	40°27'40.817"N	104°48'04.259"W
Field Reference Pt			3171284.48	1426358.81	40°30'07.643"N	104°53'02.634"W

WELLPATH DATUM

Calculation method	Minimum curvature	PROPETRO 12 (4') (RKB) to Facility Vertical Datum	4732.00ft
Horizontal Reference Pt	Slot	PROPETRO 12 (4') (RKB) to Mean Sea Level	4732.00ft
Vertical Reference Pt	PROPETRO 12 (4') (RKB)	PROPETRO 12 (4') (RKB) to Mud Line at Slot (SLOT#08 GOETZEL 31N-30C-M (2013'FNL & 2446'FEL, SEC.29))	4732.00ft
MD Reference Pt	PROPETRO 12 (4') (RKB)	Section Origin	N 0.00, E 0.00 ft
Field Vertical Reference	Mean Sea Level	Section Azimuth	270.50°



Planned Wellpath Report

GOETZEL 31N-30C-M PWP (REV-C.0)

Page 2 of 8



REFERENCE WELLPATH IDENTIFICATION

Operator	SYNERGY RESOURCES CORPORATION	Slot	SLOT#08 GOETZEL 31N-30C-M (2013'FNL & 2446'FEL, SEC.29)
Area	COLORADO	Well	GOETZEL 31N-30C-M
Field	WELD COUNTY (NAD83,TRUE NORTH)	Wellbore	GOETZEL 31N-30C-M PWB
Facility	SEC.29-T06N-R66W		

WELLPATH DATA (164 stations) † = interpolated/extrapolated station

MD [ft]	Inclination [°]	Azimuth [°]	TVD [ft]	Vert Sect [ft]	North [ft]	East [ft]	DLS [°/100ft]	Comments
0.00†	0.000	38.825	0.00	0.00	0.00	0.00	0.00	
4.00	0.000	38.825	4.00	0.00	0.00	0.00	0.00	Tie On
104.00†	0.000	38.825	104.00	0.00	0.00	0.00	0.00	
204.00†	0.000	38.825	204.00	0.00	0.00	0.00	0.00	
304.00†	0.000	38.825	304.00	0.00	0.00	0.00	0.00	
404.00†	0.000	38.825	404.00	0.00	0.00	0.00	0.00	
504.00†	0.000	38.825	504.00	0.00	0.00	0.00	0.00	
604.00†	0.000	38.825	604.00	0.00	0.00	0.00	0.00	
704.00†	0.000	38.825	704.00	0.00	0.00	0.00	0.00	
804.00†	0.000	38.825	804.00	0.00	0.00	0.00	0.00	
904.00†	0.000	38.825	904.00	0.00	0.00	0.00	0.00	
1004.00†	0.000	38.825	1004.00	0.00	0.00	0.00	0.00	
1050.00	0.000	38.825	1050.00	0.00	0.00	0.00	0.00	End of Tangent
1104.00†	1.080	38.825	1104.00	-0.32	0.40	0.32	2.00	
1204.00†	3.080	38.825	1203.93	-2.57	3.22	2.59	2.00	
1304.00†	5.080	38.825	1303.67	-6.98	8.77	7.05	2.00	
1352.88	6.058	38.825	1352.31	-9.92	12.46	10.03	2.00	End of Build
1404.00†	6.058	38.825	1403.15	-13.27	16.66	13.41	0.00	
1504.00†	6.058	38.825	1502.59	-19.81	24.89	20.03	0.00	
1604.00†	6.058	38.825	1602.03	-26.35	33.11	26.64	0.00	
1704.00†	6.058	38.825	1701.48	-32.90	41.33	33.26	0.00	
1804.00†	6.058	38.825	1800.92	-39.44	49.55	39.87	0.00	
1904.00†	6.058	38.825	1900.36	-45.99	57.77	46.49	0.00	
2004.00†	6.058	38.825	1999.80	-52.53	65.99	53.11	0.00	
2104.00†	6.058	38.825	2099.24	-59.08	74.21	59.72	0.00	
2204.00†	6.058	38.825	2198.68	-65.62	82.44	66.34	0.00	
2304.00†	6.058	38.825	2298.13	-72.16	90.66	72.95	0.00	
2404.00†	6.058	38.825	2397.57	-78.71	98.88	79.57	0.00	
2504.00†	6.058	38.825	2497.01	-85.25	107.10	86.19	0.00	
2604.00†	6.058	38.825	2596.45	-91.80	115.32	92.80	0.00	



Planned Wellpath Report

GOETZEL 31N-30C-M PWP (REV-C.0)

Page 3 of 8



REFERENCE WELLPATH IDENTIFICATION

Operator	SYNERGY RESOURCES CORPORATION	Slot	SLOT#08 GOETZEL 31N-30C-M (2013'FNL & 2446'FEL, SEC.29)
Area	COLORADO	Well	GOETZEL 31N-30C-M
Field	WELD COUNTY (NAD83,TRUE NORTH)	Wellbore	GOETZEL 31N-30C-M PWB
Facility	SEC.29-T06N-R66W		

WELLPATH DATA (164 stations) † = interpolated/extrapolated station

MD [ft]	Inclination [°]	Azimuth [°]	TVD [ft]	Vert Sect [ft]	North [ft]	East [ft]	DLS [°/100ft]	Comments
2704.00†	6.058	38.825	2695.89	-98.34	123.54	99.42	0.00	
2804.00†	6.058	38.825	2795.33	-104.89	131.76	106.03	0.00	
2904.00†	6.058	38.825	2894.78	-111.43	139.98	112.65	0.00	
3004.00†	6.058	38.825	2994.22	-117.97	148.21	119.27	0.00	
3104.00†	6.058	38.825	3093.66	-124.52	156.43	125.88	0.00	
3204.00†	6.058	38.825	3193.10	-131.06	164.65	132.50	0.00	
3304.00†	6.058	38.825	3292.54	-137.61	172.87	139.11	0.00	
3404.00†	6.058	38.825	3391.98	-144.15	181.09	145.73	0.00	
3504.00†	6.058	38.825	3491.43	-150.70	189.31	152.35	0.00	
3604.00†	6.058	38.825	3590.87	-157.24	197.53	158.96	0.00	
3704.00†	6.058	38.825	3690.31	-163.78	205.75	165.58	0.00	
3804.00†	6.058	38.825	3789.75	-170.33	213.98	172.19	0.00	
3904.00†	6.058	38.825	3889.19	-176.87	222.20	178.81	0.00	
4004.00†	6.058	38.825	3988.63	-183.42	230.42	185.43	0.00	
4104.00†	6.058	38.825	4088.07	-189.96	238.64	192.04	0.00	
4204.00†	6.058	38.825	4187.52	-196.51	246.86	198.66	0.00	
4304.00†	6.058	38.825	4286.96	-203.05	255.08	205.27	0.00	
4404.00†	6.058	38.825	4386.40	-209.59	263.30	211.89	0.00	
4504.00†	6.058	38.825	4485.84	-216.14	271.53	218.51	0.00	
4604.00†	6.058	38.825	4585.28	-222.68	279.75	225.12	0.00	
4704.00†	6.058	38.825	4684.72	-229.23	287.97	231.74	0.00	
4804.00†	6.058	38.825	4784.17	-235.77	296.19	238.35	0.00	
4904.00†	6.058	38.825	4883.61	-242.32	304.41	244.97	0.00	
5004.00†	6.058	38.825	4983.05	-248.86	312.63	251.59	0.00	
5104.00†	6.058	38.825	5082.49	-255.40	320.85	258.20	0.00	
5204.00†	6.058	38.825	5181.93	-261.95	329.07	264.82	0.00	
5304.00†	6.058	38.825	5281.37	-268.49	337.30	271.43	0.00	
5404.00†	6.058	38.825	5380.82	-275.04	345.52	278.05	0.00	
5504.00†	6.058	38.825	5480.26	-281.58	353.74	284.66	0.00	
5604.00†	6.058	38.825	5579.70	-288.13	361.96	291.28	0.00	



Planned Wellpath Report

GOETZEL 31N-30C-M PWP (REV-C.0)

Page 4 of 8



REFERENCE WELLPATH IDENTIFICATION

Operator	SYNERGY RESOURCES CORPORATION	Slot	SLOT#08 GOETZEL 31N-30C-M (2013'FNL & 2446'FEL, SEC.29)
Area	COLORADO	Well	GOETZEL 31N-30C-M
Field	WELD COUNTY (NAD83,TRUE NORTH)	Wellbore	GOETZEL 31N-30C-M PWB
Facility	SEC.29-T06N-R66W		

WELLPATH DATA (164 stations) † = interpolated/extrapolated station

MD [ft]	Inclination [°]	Azimuth [°]	TVD [ft]	Vert Sect [ft]	North [ft]	East [ft]	DLS [°/100ft]	Comments
5704.00†	6.058	38.825	5679.14	-294.67	370.18	297.90	0.00	
5804.00†	6.058	38.825	5778.58	-301.21	378.40	304.51	0.00	
5904.00†	6.058	38.825	5878.02	-307.76	386.62	311.13	0.00	
6004.00†	6.058	38.825	5977.47	-314.30	394.85	317.74	0.00	
6104.00†	6.058	38.825	6076.91	-320.85	403.07	324.36	0.00	
6204.00†	6.058	38.825	6176.35	-327.39	411.29	330.98	0.00	
6304.00†	6.058	38.825	6275.79	-333.94	419.51	337.59	0.00	
6404.00†	6.058	38.825	6375.23	-340.48	427.73	344.21	0.00	
6406.84	6.058	38.825	6378.06	-340.67	427.96	344.40	0.00	End of Tangent
6504.00†	6.565	311.107	6474.81	-339.63	435.62	343.42	9.00	
6604.00†	14.458	285.350	6573.11	-323.19	442.70	327.04	9.00	
6704.00†	23.166	278.094	6667.69	-291.56	448.79	295.47	9.00	
6804.00†	32.029	274.685	6756.22	-245.52	453.73	249.47	9.00	
6904.00†	40.948	272.640	6836.54	-186.20	457.42	190.18	9.00	
7004.00†	49.892	271.222	6906.66	-115.07	459.75	119.07	9.00	
7104.00†	58.848	270.136	6964.86	-33.88	460.67	37.88	9.00	
7204.00†	67.813	269.239	7009.70	55.38	460.15	-51.38	9.00	
7304.00†	76.782	268.451	7040.08	150.51	458.22	-146.53	9.00	
7404.00†	85.752	267.719	7055.25	249.16	454.91	-245.22	9.00	
7451.34	90.000	267.380	7057.00†	296.40	452.89	-292.47	9.00	End of 3D Arc
7504.00†	90.000	267.380	7057.00	348.97	450.48	-345.07	0.00	
7604.00†	90.000	267.380	7057.00	448.83	445.91	-444.97	0.00	
7704.00†	90.000	267.380	7057.00	548.68	441.34	-544.86	0.00	
7804.00†	90.000	267.380	7057.00	648.53	436.77	-644.76	0.00	
7904.00†	90.000	267.380	7057.00	748.38	432.20	-744.66	0.00	
8004.00†	90.000	267.380	7057.00	848.23	427.63	-844.55	0.00	
8104.00†	90.000	267.380	7057.00	948.09	423.05	-944.45	0.00	
8204.00†	90.000	267.380	7057.00	1047.94	418.48	-1044.34	0.00	
8304.00†	90.000	267.380	7057.00	1147.79	413.91	-1144.24	0.00	
8404.00†	90.000	267.380	7057.00	1247.64	409.34	-1244.13	0.00	



Planned Wellpath Report

GOETZEL 31N-30C-M PWP (REV-C.0)

Page 5 of 8



REFERENCE WELLPATH IDENTIFICATION

Operator	SYNERGY RESOURCES CORPORATION	Slot	SLOT#08 GOETZEL 31N-30C-M (2013'FNL & 2446'FEL, SEC.29)
Area	COLORADO	Well	GOETZEL 31N-30C-M
Field	WELD COUNTY (NAD83,TRUE NORTH)	Wellbore	GOETZEL 31N-30C-M PWB
Facility	SEC.29-T06N-R66W		

WELLPATH DATA (164 stations) † = interpolated/extrapolated station

MD [ft]	Inclination [°]	Azimuth [°]	TVD [ft]	Vert Sect [ft]	North [ft]	East [ft]	DLS [°/100ft]	Comments
8504.00†	90.000	267.380	7057.00	1347.49	404.77	-1344.03	0.00	
8604.00†	90.000	267.380	7057.00	1447.35	400.20	-1443.92	0.00	
8704.00†	90.000	267.380	7057.00	1547.20	395.63	-1543.82	0.00	
8804.00†	90.000	267.380	7057.00	1647.05	391.06	-1643.71	0.00	
8904.00†	90.000	267.380	7057.00	1746.90	386.49	-1743.61	0.00	
9004.00†	90.000	267.380	7057.00	1846.75	381.92	-1843.51	0.00	
9104.00†	90.000	267.380	7057.00	1946.61	377.35	-1943.40	0.00	
9204.00†	90.000	267.380	7057.00	2046.46	372.77	-2043.30	0.00	
9304.00†	90.000	267.380	7057.00	2146.31	368.20	-2143.19	0.00	
9404.00†	90.000	267.380	7057.00	2246.16	363.63	-2243.09	0.00	
9504.00†	90.000	267.380	7057.00	2346.01	359.06	-2342.98	0.00	
9604.00†	90.000	267.380	7057.00	2445.87	354.49	-2442.88	0.00	
9704.00†	90.000	267.380	7057.00	2545.72	349.92	-2542.77	0.00	
9804.00†	90.000	267.380	7057.00	2645.57	345.35	-2642.67	0.00	
9904.00†	90.000	267.380	7057.00	2745.42	340.78	-2742.57	0.00	
10004.00†	90.000	267.380	7057.00	2845.27	336.21	-2842.46	0.00	
10104.00†	90.000	267.380	7057.00	2945.13	331.64	-2942.36	0.00	
10204.00†	90.000	267.380	7057.00	3044.98	327.07	-3042.25	0.00	
10304.00†	90.000	267.380	7057.00	3144.83	322.49	-3142.15	0.00	
10404.00†	90.000	267.380	7057.00	3244.68	317.92	-3242.04	0.00	
10504.00†	90.000	267.380	7057.00	3344.53	313.35	-3341.94	0.00	
10604.00†	90.000	267.380	7057.00	3444.39	308.78	-3441.83	0.00	
10704.00†	90.000	267.380	7057.00	3544.24	304.21	-3541.73	0.00	
10804.00†	90.000	267.380	7057.00	3644.09	299.64	-3641.62	0.00	
10904.00†	90.000	267.380	7057.00	3743.94	295.07	-3741.52	0.00	
11004.00†	90.000	267.380	7057.00	3843.79	290.50	-3841.42	0.00	
11104.00†	90.000	267.380	7057.00	3943.65	285.93	-3941.31	0.00	
11204.00†	90.000	267.380	7057.00	4043.50	281.36	-4041.21	0.00	
11304.00†	90.000	267.380	7057.00	4143.35	276.78	-4141.10	0.00	
11404.00†	90.000	267.380	7057.00	4243.20	272.21	-4241.00	0.00	



Planned Wellpath Report

GOETZEL 31N-30C-M PWP (REV-C.0)

Page 6 of 8



REFERENCE WELLPATH IDENTIFICATION

Operator	SYNERGY RESOURCES CORPORATION	Slot	SLOT#08 GOETZEL 31N-30C-M (2013'FNL & 2446'FEL, SEC.29)
Area	COLORADO	Well	GOETZEL 31N-30C-M
Field	WELD COUNTY (NAD83,TRUE NORTH)	Wellbore	GOETZEL 31N-30C-M PWB
Facility	SEC.29-T06N-R66W		

WELLPATH DATA (164 stations) † = interpolated/extrapolated station

MD [ft]	Inclination [°]	Azimuth [°]	TVD [ft]	Vert Sect [ft]	North [ft]	East [ft]	DLS [°/100ft]	Comments
11504.00†	90.000	267.380	7057.00	4343.05	267.64	-4340.89	0.00	
11604.00†	90.000	267.380	7057.00	4442.91	263.07	-4440.79	0.00	
11704.00†	90.000	267.380	7057.00	4542.76	258.50	-4540.68	0.00	
11804.00†	90.000	267.380	7057.00	4642.61	253.93	-4640.58	0.00	
11904.00†	90.000	267.380	7057.00	4742.46	249.36	-4740.47	0.00	
12004.00†	90.000	267.380	7057.00	4842.31	244.79	-4840.37	0.00	
12104.00†	90.000	267.380	7057.00	4942.17	240.22	-4940.27	0.00	
12204.00†	90.000	267.380	7057.00	5042.02	235.65	-5040.16	0.00	
12304.00†	90.000	267.380	7057.00	5141.87	231.08	-5140.06	0.00	
12404.00†	90.000	267.380	7057.00	5241.72	226.50	-5239.95	0.00	
12504.00†	90.000	267.380	7057.00	5341.57	221.93	-5339.85	0.00	
12604.00†	90.000	267.380	7057.00	5441.43	217.36	-5439.74	0.00	
12704.00†	90.000	267.380	7057.00	5541.28	212.79	-5539.64	0.00	
12804.00†	90.000	267.380	7057.00	5641.13	208.22	-5639.53	0.00	
12904.00†	90.000	267.380	7057.00	5740.98	203.65	-5739.43	0.00	
13004.00†	90.000	267.380	7057.00	5840.83	199.08	-5839.32	0.00	
13104.00†	90.000	267.380	7057.00	5940.69	194.51	-5939.22	0.00	
13204.00†	90.000	267.380	7057.00	6040.54	189.94	-6039.12	0.00	
13304.00†	90.000	267.380	7057.00	6140.39	185.37	-6139.01	0.00	
13404.00†	90.000	267.380	7057.00	6240.24	180.80	-6238.91	0.00	
13504.00†	90.000	267.380	7057.00	6340.09	176.22	-6338.80	0.00	
13604.00†	90.000	267.380	7057.00	6439.95	171.65	-6438.70	0.00	
13704.00†	90.000	267.380	7057.00	6539.80	167.08	-6538.59	0.00	
13804.00†	90.000	267.380	7057.00	6639.65	162.51	-6638.49	0.00	
13904.00†	90.000	267.380	7057.00	6739.50	157.94	-6738.38	0.00	
14004.00†	90.000	267.380	7057.00	6839.35	153.37	-6838.28	0.00	
14104.00†	90.000	267.380	7057.00	6939.21	148.80	-6938.18	0.00	
14204.00†	90.000	267.380	7057.00	7039.06	144.23	-7038.07	0.00	
14304.00†	90.000	267.380	7057.00	7138.91	139.66	-7137.97	0.00	
14404.00†	90.000	267.380	7057.00	7238.76	135.09	-7237.86	0.00	



Planned Wellpath Report

GOETZEL 31N-30C-M PWP (REV-C.0)

Page 7 of 8



REFERENCE WELLPATH IDENTIFICATION

Operator	SYNERGY RESOURCES CORPORATION	Slot	SLOT#08 GOETZEL 31N-30C-M (2013'FNL & 2446'FEL, SEC.29)
Area	COLORADO	Well	GOETZEL 31N-30C-M
Field	WELD COUNTY (NAD83,TRUE NORTH)	Wellbore	GOETZEL 31N-30C-M PWB
Facility	SEC.29-T06N-R66W		

WELLPATH DATA (164 stations) † = interpolated/extrapolated station

MD [ft]	Inclination [°]	Azimuth [°]	TVD [ft]	Vert Sect [ft]	North [ft]	East [ft]	DLS [°/100ft]	Comments
14504.00†	90.000	267.380	7057.00	7338.61	130.52	-7337.76	0.00	
14604.00†	90.000	267.380	7057.00	7438.47	125.94	-7437.65	0.00	
14704.00†	90.000	267.380	7057.00	7538.32	121.37	-7537.55	0.00	
14804.00†	90.000	267.380	7057.00	7638.17	116.80	-7637.44	0.00	
14904.00†	90.000	267.380	7057.00	7738.02	112.23	-7737.34	0.00	
15004.00†	90.000	267.380	7057.00	7837.87	107.66	-7837.23	0.00	
15104.00†	90.000	267.380	7057.00	7937.73	103.09	-7937.13	0.00	
15204.00†	90.000	267.380	7057.00	8037.58	98.52	-8037.03	0.00	
15304.00†	90.000	267.380	7057.00	8137.43	93.95	-8136.92	0.00	
15404.00†	90.000	267.380	7057.00	8237.28	89.38	-8236.82	0.00	
15504.00†	90.000	267.380	7057.00	8337.13	84.81	-8336.71	0.00	
15604.00†	90.000	267.380	7057.00	8436.99	80.23	-8436.61	0.00	
15704.00†	90.000	267.380	7057.00	8536.84	75.66	-8536.50	0.00	
15731.87	90.000	267.380	7057.00 ²	8564.67	74.39	-8564.35	0.00	End of Tangent

HOLE & CASING SECTIONS - Ref Wellbore: GOETZEL 31N-30C-M PWB Ref Wellpath: GOETZEL 31N-30C-M PWP (REV-C.0)

String/Diameter	Start MD [ft]	End MD [ft]	Interval [ft]	Start TVD [ft]	End TVD [ft]	Start N/S [ft]	Start E/W [ft]	End N/S [ft]	End E/W [ft]
13.5in Open Hole	4.00	1700.00	1696.00	4.00	1697.50	0.00	0.00	41.00	32.99
9.625in Casing Surface	4.00	1700.00	1696.00	4.00	1697.50	0.00	0.00	41.00	32.99
8.5in Open Hole	1700.00	15731.87	14031.87	1697.50	7057.00	41.00	32.99	74.39	-8564.35



Planned Wellpath Report

GOETZEL 31N-30C-M PWP (REV-C.0)

Page 8 of 8



REFERENCE WELLPATH IDENTIFICATION

Operator	SYNERGY RESOURCES CORPORATION	Slot	SLOT#08 GOETZEL 31N-30C-M (2013'FNL & 2446'FEL, SEC.29)
Area	COLORADO	Well	GOETZEL 31N-30C-M
Field	WELD COUNTY (NAD83, TRUE NORTH)	Wellbore	GOETZEL 31N-30C-M PWB
Facility	SEC.29-T06N-R66W		

TARGETS

Name	MD [ft]	TVD [ft]	North [ft]	East [ft]	Grid East [US ft]	Grid North [US ft]	Latitude	Longitude	Shape
SEC.29-T06N-R66W NORTHERN		-16.00	200.05	1.10	3194449.66	1411671.99	40°27'40.817"N	104°48'04.259"W	polygon
SEC.29-T06N-R66W SOUTHERN		-16.00	200.05	1.10	3194449.66	1411671.99	40°27'40.817"N	104°48'04.259"W	polygon
SEC.30-T06N-R66W NORTHERN		-16.00	200.05	1.10	3194449.66	1411671.99	40°27'40.817"N	104°48'04.259"W	polygon
SEC.30-T06N-R66W SOUTHERN		-16.00	200.05	1.10	3194449.66	1411671.99	40°27'40.817"N	104°48'04.259"W	polygon
GOETZEL 31N-30C-M BHL REV-1 (1625'FNL & 510'FWL, SEC.30)		7057.00	93.21	-8204.26	3186245.72	1411500.50	40°27'39.748"N	104°49'50.412"W	circle
2) GOETZEL 31N-30C-M BHL REV-2 (1625'FNL & 150'FWL, SEC.30)	15731.87	7057.00	74.39	-8564.35	3185885.80	1411478.84	40°27'39.560"N	104°49'55.070"W	point
1) GOETZEL 31N-30C-M TOP REV-1 (1554'FNL & 2582'FWL, SEC.29)	7451.34	7057.00	452.89	-292.47	3194154.12	1411922.49	40°27'43.315"N	104°48'08.057"W	circle

SURVEY PROGRAM - Ref Wellbore: GOETZEL 31N-30C-M PWB Ref Wellpath: GOETZEL 31N-30C-M PWP (REV-C.0)

Start MD [ft]	End MD [ft]	Positional Uncertainty Model	Log Name/Comment	Wellbore
4.00	1700.00	Custom BHI NaviTrak (Standard Rotating) (Rockies 0.03Gt model)		GOETZEL 31N-30C-M PWB
1700.00	15732.00	Custom BHI AutoTrak Curve (IFR1, Short) (Rockies 0.03Gt model)		GOETZEL 31N-30C-M PWB