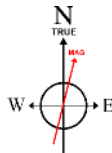


Location:	COLORADO	Slot:	SLOT#04 GOETZEL 4N-30A-M (1873'FNL & 2446'FEL, SEC.29)
Field:	WELD COUNTY (NAD83,TRUE NORTH)	Well:	GOETZEL 4N-30A-M
Facility:	SEC.29-T06N-R66W	Wellbore:	GOETZEL 4N-30A-M PWB

Plot reference wellpath is GOETZEL 4N-30A-M PWP (REV-C.0)	Grid System: NAD83 / Lambert Colorado SP, Northern Zone (501), US feet
True vertical depths are referenced to PROPETRO 12 (4) (RKB)	* = Wellpath was transformed from a different geodetic datum
Measured depths are referenced to PROPETRO 12 (4) (RKB)	North Reference: True north
PROPETRO 12 (4) (RKB) to Mean Sea Level: 4732 feet	Scale: True distance
Mean Sea Level to Mud line (At Slot: SLOTH04 GOETZEL 4N-30A-M (1873FNL & 2446FEL, SEC.29): 0 feet	Depths are in feet
Coordinates are in feet referenced to Slot	Created by: waggman on 2017-02-23
	Database: WA_DEN_Driver_Defn

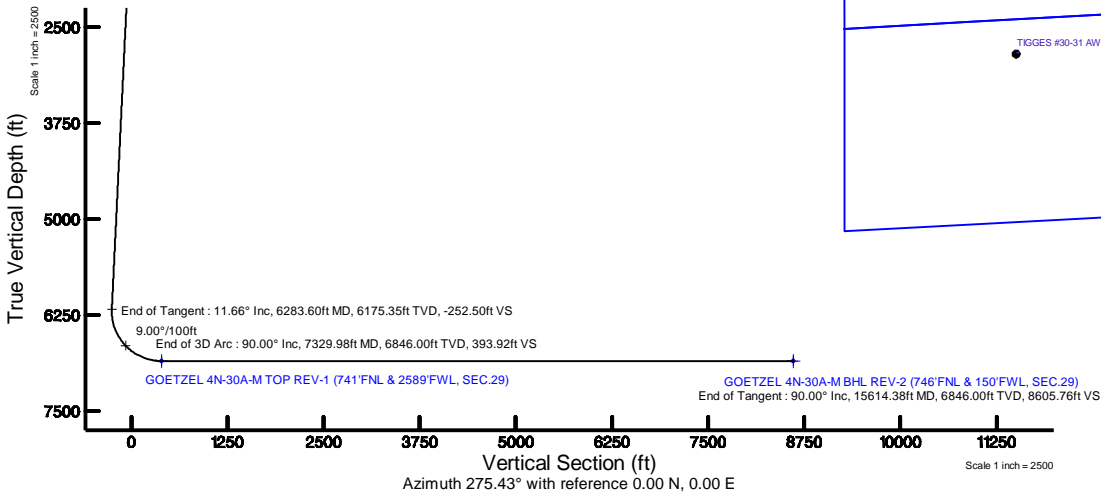
Facility Name				Grid East (US ft)	Grid North (US ft)	Latitude	Longitude
SEC 29-T06N-R66W				3194449.646	1411672.008	40°27'40.817"N	104°48'04.259"W
Slot	Local N (ft)	Local E (ft)	Grid East (US ft)	Grid North (US ft)	Latitude	Longitude	
SLOT#04 GOETZEL 4N-30AM (1873FTN. & 2446FEL SEC 29)	-60.11	-0.23	3194449.888	1411611.898	40°27'40.223"N	104°48'04.262"W	
PROPTYPE 12 (4) (RKB) to Mud line (At Slot: SLOT#04 GOETZEL 4N-30AM (1873FTN. & 2446FEL SEC 29))						4732R	
Mean Sea Level to Mud line (At Slot: SLOT#04 GOETZEL 4N-30AM (1873FTN. & 2446FEL SEC 29))						OR	
PROPTYPE 12 (4) (RKB) to Mean Sea Level						4732R	

MD (ft)	Inc (°)	Az (°)	TVD (ft)	Local N (ft)	Local E (ft)	Grid East (US ft)	Grid North (US ft)	Latitude	Longitude
4.00	0.000	18.954	4.00	0.00	0.00	3194449.89	1411611.90	40°27'40.223"N	104°48'04.262"W



BGGM (1900.0 to 2018.0) Dip: 66.92° Field: 52499.6 nT
Magnetic North is 8.43 degrees East of True North (at 2/22/2017)

To correct azimuth from Magnetic to True add 8.43 degrees



Well Profile Data								
Design Comment	MD (ft)	Inc (°)	Az (°)	TVD (ft)	Local N (ft)	Local E (ft)	DLS (°/100ft)	VS (ft)
Tie On	4.00	0.000	18.954	4.00	0.00	0.00	0.00	0.00
End of Tangent	650.00	0.000	18.954	650.00	0.00	0.00	0.00	0.00
End of Build	1233.01	11.660	18.954	1228.99	55.91	19.20	2.00	-13.82
End of Tangent	6283.60	11.660	18.954	6175.35	1021.33	350.76	0.00	-252.50
End of 3D Arc	7329.98	90.000	267.843	6846.00	1126.45	-288.58	9.00	393.92
End of Tangent	15614.38	90.000	267.843	6846.00	814.62	-8567.12	0.00	8605.76

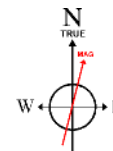
Start MD (ft)	End MD (ft)	Tool	Model	Log Name/Comment	Wellbore
4.00	1700.00	BH-1 NaviTrak	Custom BH-1 NaviTrak (Standard Rotating) (Rockies 0.03Gt model)		GOETZEL 4N-30A-M PWB
1700.00	15615.00	BH-1 AutoTrak Curve	Custom BH-1 AutoTrak Curve (IFR1, Short) (Rockies 0.03Gt model)		GOETZEL 4N-30A-M PWB

Name	MD (ft)	TWD (ft)	Local N (ft)	Local E (ft)	Grid East (US ft)	Grid North (US ft)	Latitude	Longitude
SEC 29-T6N-R66W NORTHERN	-16.00	60.09	0.25		13944-69.66	1411671.99	40°27'40.817"N	104°48'04.259"W
SEC 29-T6N-R66W SOUTHERN	-16.00	60.09	0.25		13944-69.66	1411671.99	40°27'40.817"N	104°48'04.259"W
SEC 30-T6N-R66W NORTHERN	-16.00	60.09	0.25		13944-69.66	1411671.99	40°27'40.817"N	104°48'04.259"W
SEC 30-T6N-R66W SOUTHERN	-16.00	60.09	0.25		13944-69.66	1411671.99	40°27'40.817"N	104°48'04.259"W
GOETZEL 4N-30A-MBHL REV-1 (746PFL & 510PFL, SEC 29)	686.46	833.44	-8207.04		3186236.85	1412380.61	40°27'48.445"N	104°49'50.441"W
GOETZEL 4N-30A-MBHL REV-2 (746PFL & 510PFL, SEC 29)	15614.38	6846.04	814.62	-8567.12	3185876.95	1412358.95	40°27'48.256"N	104°49'55.099"W
GOETZEL 4N-30A-MT TOP REV-1 (741PFL & 2589PFL, SEC 29)	7329.98	6846.04	1126.45	-288.58	3140152.45	1412735.95	40°27'51.354"N	104°48'07.946"W



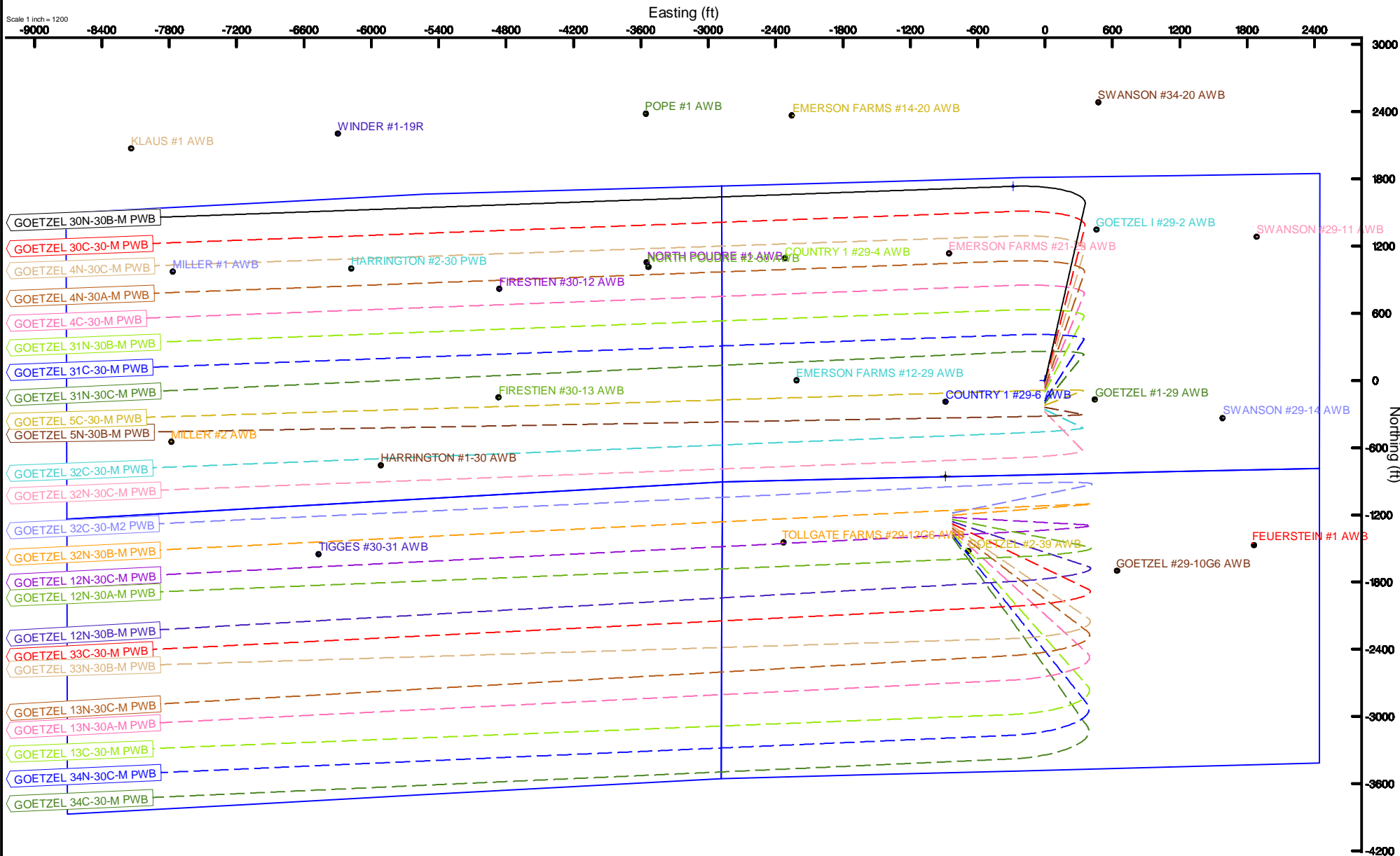
SYNERGY RESOURCES CORPORATION

Location: COLORADO Slot: SLOT#01 GOETZEL 30N-30B-M (1813'FNL & 2445'FEL, SEC.29)
Field: WELD COUNTY (NAD83,TRUE NORTH) Well: GOETZEL 30N-30B-M
Facility: SEC.29-T06N-R66W Wellbore: GOETZEL 30N-30B-M-PWB



BGGM (1900.0 to 2018.0) Dip: 66.92° Field: 52499.6 nT
Magnetic North is 8.43 degrees East of True North (at 2/22/2017)

To correct azimuth from Magnetic to True add 8.43 degrees



GOETZEL_4N-30A-M_PWP__REV-C.0_.las

~VERSION INFORMATION

VERS. 2.0 : CWLS LOG ASCII STANDARD-VERSION 2.0
 WRAP. NO : ASCII DATA SECTION CONTAINS ONE ROW PER WELLPATH STATION

~WELL INFORMATION

#MNEM	.UNITS	DATA	:DESCRIPTION
#----	.-----	----	:-----
STRT	.ft	0.00	:START MD
STOP	.ft	15614.38	:STOP MD
STEP	.ft	0.0	:STEP (non-uniform increment)
NULL	.	-999.99	:NULL
COMP	.	SYNERGY RESOURCES CORPORATION	:OPERATOR
WELL	.	GOETZEL 4N-30A-M	:WELL
FLD	.	WELD COUNTY (NAD83,TRUE NORTH)	:FIELD
LOC	.	COLORADO	:AREA (aka: Location)
CNTY	.	N/A	:COUNTY
STAT	.	N/A	:STATE
CTRY	.	N/A	:COUNTRY
SRVC	.	Baker Hughes	:CONTRACTOR
DATE	.	11/10/2016	:LOG REV DATE
API	.		:API NUMBER

~OTHER INFORMATION

#Software: wellArchitect(R) Version 5.0

#MNEM	.UNITS	DATA	:DESCRIPTION
#----	.-----	----	:-----
WPTYPE	.	PLANNED WELLPATH	:WELLPATH TYPE
FACILITY	.	SEC.29-T06N-R66W	:FACILITY
SLOT	.	SLOT#04 GOETZEL 4N-30A-M (1873'FNL & 2446'FEL, SEC.29):SLOT	:SLOT
WELLBORE	.	GOETZEL 4N-30A-M PWB	:WELLBORE
WELLPATH	.	GOETZEL 4N-30A-M PWP (REV-C.0)	:WELLPATH
MDREFPT	.	PROPETRO 12 (4') (RKB)	:MD REFERENCE POINT
TVDREFPT	.	PROPETRO 12 (4') (RKB)	:TVD REFERENCE POINT
LCLREFPT	.	SLOT	:LOCAL COORDINATE REFERENCE PT
VSAZIMUTH.deg		275.43	:VERTICAL SECTION AZIMUTH
VSORIGN .ft		0.00	:VERTICAL SECTION ORIGIN NORTH
VSORIGE .ft		0.00	:VERTICAL SECTION ORIGIN EAST

~CURVE (WELLPATH) INFORMATION

#MNEM	.UNITS	:DESCRIPTION
#----	.-----	:-----
DEPT	.ft	:MEASURED DEPTH
INC	.deg	:INCLINATION
AZI	.deg	:AZIMUTH

GOETZEL_4N-30A-M_PWP__REV-C.0_.las

TVD .ft :TRUE VERTICAL DEPTH
 SECT .ft :CROSS SECTION (CURTAIN/VERTICAL)
 LOCALN .ft :LOCAL NORTH
 LOCALE .ft :LOCAL EAST
 LAT .deg :LATITUDE
 LONG .deg :LONGITUDE
 DLS .deg/100ft :DOGLEG SEVERITY

~ASCII DATA

0.00	0.00	18.95	0.00	0.00	0.00	0.00	40.4611731	-104.8011839	0.00
4.00	0.00	18.95	4.00	0.00	0.00	0.00	40.4611731	-104.8011839	0.00
104.00	0.00	18.95	104.00	0.00	0.00	0.00	40.4611731	-104.8011839	0.00
204.00	0.00	18.95	204.00	0.00	0.00	0.00	40.4611731	-104.8011839	0.00
304.00	0.00	18.95	304.00	0.00	0.00	0.00	40.4611731	-104.8011839	0.00
404.00	0.00	18.95	404.00	0.00	0.00	0.00	40.4611731	-104.8011839	0.00
504.00	0.00	18.95	504.00	0.00	0.00	0.00	40.4611731	-104.8011839	0.00
604.00	0.00	18.95	604.00	0.00	0.00	0.00	40.4611731	-104.8011839	0.00
650.00	0.00	18.95	650.00	0.00	0.00	0.00	40.4611731	-104.8011839	0.00
704.00	1.08	18.95	704.00	-0.12	0.48	0.17	40.4611744	-104.8011833	2.00
804.00	3.08	18.95	803.93	-0.97	3.91	1.34	40.4611838	-104.8011791	2.00
904.00	5.08	18.95	903.67	-2.63	10.64	3.66	40.4612023	-104.8011708	2.00
1004.00	7.08	18.95	1003.10	-5.11	20.66	7.10	40.4612298	-104.8011584	2.00
1104.00	9.08	18.95	1102.10	-8.39	33.95	11.66	40.4612663	-104.8011420	2.00
1204.00	11.08	18.95	1200.55	-12.49	50.50	17.34	40.4613117	-104.8011216	2.00
1233.01	11.66	18.95	1228.99	-13.82	55.91	19.20	40.4613265	-104.8011149	2.00
1304.00	11.66	18.95	1298.52	-17.18	69.48	23.86	40.4613638	-104.8010981	0.00
1404.00	11.66	18.95	1396.46	-21.90	88.60	30.43	40.4614162	-104.8010745	0.00
1504.00	11.66	18.95	1494.39	-26.63	107.71	36.99	40.4614687	-104.8010510	0.00
1604.00	11.66	18.95	1592.33	-31.36	126.83	43.56	40.4615212	-104.8010274	0.00
1704.00	11.66	18.95	1690.26	-36.08	145.94	50.12	40.4615737	-104.8010038	0.00
1804.00	11.66	18.95	1788.20	-40.81	165.06	56.69	40.4616261	-104.8009802	0.00
1904.00	11.66	18.95	1886.14	-45.53	184.17	63.25	40.4616786	-104.8009566	0.00
2004.00	11.66	18.95	1984.07	-50.26	203.29	69.82	40.4617311	-104.8009330	0.00
2104.00	11.66	18.95	2082.01	-54.98	222.40	76.38	40.4617835	-104.8009094	0.00
2204.00	11.66	18.95	2179.95	-59.71	241.52	82.94	40.4618360	-104.8008858	0.00
2304.00	11.66	18.95	2277.88	-64.44	260.63	89.51	40.4618885	-104.8008622	0.00
2404.00	11.66	18.95	2375.82	-69.16	279.75	96.07	40.4619409	-104.8008386	0.00
2504.00	11.66	18.95	2473.76	-73.89	298.86	102.64	40.4619934	-104.8008150	0.00
2604.00	11.66	18.95	2571.69	-78.61	317.98	109.20	40.4620459	-104.8007914	0.00
2704.00	11.66	18.95	2669.63	-83.34	337.09	115.77	40.4620983	-104.8007679	0.00
2804.00	11.66	18.95	2767.56	-88.07	356.21	122.33	40.4621508	-104.8007443	0.00
2904.00	11.66	18.95	2865.50	-92.79	375.32	128.90	40.4622033	-104.8007207	0.00
3004.00	11.66	18.95	2963.44	-97.52	394.44	135.46	40.4622557	-104.8006971	0.00
3104.00	11.66	18.95	3061.37	-102.24	413.55	142.03	40.4623082	-104.8006735	0.00

GOETZEL_4N-30A-M_PWP_REV-C.0_.las

3204.00	11.66	18.95	3159.31	-106.97	432.67	148.59	40.4623607	-104.8006499	0.00
3304.00	11.66	18.95	3257.25	-111.69	451.78	155.16	40.4624131	-104.8006263	0.00
3404.00	11.66	18.95	3355.18	-116.42	470.90	161.72	40.4624656	-104.8006027	0.00
3504.00	11.66	18.95	3453.12	-121.15	490.01	168.29	40.4625181	-104.8005791	0.00
3604.00	11.66	18.95	3551.05	-125.87	509.13	174.85	40.4625705	-104.8005555	0.00
3704.00	11.66	18.95	3648.99	-130.60	528.24	181.42	40.4626230	-104.8005319	0.00
3804.00	11.66	18.95	3746.93	-135.32	547.36	187.98	40.4626755	-104.8005083	0.00
3904.00	11.66	18.95	3844.86	-140.05	566.47	194.54	40.4627279	-104.8004848	0.00
4004.00	11.66	18.95	3942.80	-144.77	585.59	201.11	40.4627804	-104.8004612	0.00
4104.00	11.66	18.95	4040.74	-149.50	604.70	207.67	40.4628329	-104.8004376	0.00
4204.00	11.66	18.95	4138.67	-154.23	623.82	214.24	40.4628853	-104.8004140	0.00
4304.00	11.66	18.95	4236.61	-158.95	642.93	220.80	40.4629378	-104.8003904	0.00
4404.00	11.66	18.95	4334.55	-163.68	662.04	227.37	40.4629903	-104.8003668	0.00
4504.00	11.66	18.95	4432.48	-168.40	681.16	233.93	40.4630427	-104.8003432	0.00
4604.00	11.66	18.95	4530.42	-173.13	700.27	240.50	40.4630952	-104.8003196	0.00
4704.00	11.66	18.95	4628.35	-177.86	719.39	247.06	40.4631477	-104.8002960	0.00
4804.00	11.66	18.95	4726.29	-182.58	738.50	253.63	40.4632002	-104.8002724	0.00
4904.00	11.66	18.95	4824.23	-187.31	757.62	260.19	40.4632526	-104.8002488	0.00
5004.00	11.66	18.95	4922.16	-192.03	776.73	266.76	40.4633051	-104.8002252	0.00
5104.00	11.66	18.95	5020.10	-196.76	795.85	273.32	40.4633576	-104.8002016	0.00
5204.00	11.66	18.95	5118.04	-201.48	814.96	279.89	40.4634100	-104.8001781	0.00
5304.00	11.66	18.95	5215.97	-206.21	834.08	286.45	40.4634625	-104.8001545	0.00
5404.00	11.66	18.95	5313.91	-210.94	853.19	293.01	40.4635150	-104.8001309	0.00
5504.00	11.66	18.95	5411.85	-215.66	872.31	299.58	40.4635674	-104.8001073	0.00
5604.00	11.66	18.95	5509.78	-220.39	891.42	306.14	40.4636199	-104.8000837	0.00
5704.00	11.66	18.95	5607.72	-225.11	910.54	312.71	40.4636724	-104.8000601	0.00
5804.00	11.66	18.95	5705.65	-229.84	929.65	319.27	40.4637248	-104.8000365	0.00
5904.00	11.66	18.95	5803.59	-234.56	948.77	325.84	40.4637773	-104.8000129	0.00
6004.00	11.66	18.95	5901.53	-239.29	967.88	332.40	40.4638298	-104.7999893	0.00
6104.00	11.66	18.95	5999.46	-244.02	987.00	338.97	40.4638822	-104.7999657	0.00
6204.00	11.66	18.95	6097.40	-248.74	1006.11	345.53	40.4639347	-104.7999421	0.00
6283.60	11.66	18.95	6175.35	-252.50	1021.33	350.76	40.4639765	-104.7999233	0.00
6304.00	11.14	10.03	6195.36	-253.14	1025.22	351.77	40.4639871	-104.7999197	9.00
6404.00	12.75	326.13	6293.38	-246.92	1043.94	347.29	40.4640385	-104.7999358	9.00
6504.00	19.00	301.83	6389.62	-225.30	1061.72	327.27	40.4640873	-104.8000077	9.00
6604.00	26.82	290.22	6481.71	-188.83	1078.14	292.20	40.4641324	-104.8001338	9.00
6704.00	35.18	283.69	6567.37	-138.40	1092.79	242.93	40.4641726	-104.8003108	9.00
6804.00	43.77	279.44	6644.50	-75.25	1105.30	180.69	40.4642070	-104.8005345	9.00
6904.00	52.47	276.35	6711.20	-0.95	1115.38	107.01	40.4642346	-104.8007993	9.00
7004.00	61.24	273.91	6765.82	82.69	1122.76	23.70	40.4642549	-104.8010987	9.00
7104.00	70.04	271.85	6807.03	173.60	1127.28	-67.19	40.4642673	-104.8014254	9.00
7204.00	78.87	270.01	6833.80	269.54	1128.81	-163.43	40.4642715	-104.8017712	9.00
7304.00	87.70	268.29	6845.48	368.16	1127.32	-262.63	40.4642674	-104.8021277	9.00
7329.98	90.00	267.84	6846.00	393.92	1126.45	-288.58	40.4642650	-104.8022210	9.00

GOETZEL_4N-30A-M_PWP_REV-C.0_.las									
7404.00	90.00	267.84	6846.00	467.29	1123.66	-362.55	40.4642573	-104.8024868	0.00
7504.00	90.00	267.84	6846.00	566.41	1119.90	-462.48	40.4642470	-104.8028460	0.00
7604.00	90.00	267.84	6846.00	665.54	1116.13	-562.41	40.4642367	-104.8032051	0.00
7704.00	90.00	267.84	6846.00	764.66	1112.37	-662.34	40.4642263	-104.8035642	0.00
7804.00	90.00	267.84	6846.00	863.79	1108.60	-762.27	40.4642160	-104.8039233	0.00
7904.00	90.00	267.84	6846.00	962.91	1104.84	-862.20	40.4642057	-104.8042825	0.00
8004.00	90.00	267.84	6846.00	1062.03	1101.08	-962.13	40.4641953	-104.8046416	0.00
8104.00	90.00	267.84	6846.00	1161.16	1097.31	-1062.06	40.4641850	-104.8050007	0.00
8204.00	90.00	267.84	6846.00	1260.28	1093.55	-1161.99	40.4641746	-104.8053598	0.00
8304.00	90.00	267.84	6846.00	1359.41	1089.78	-1261.91	40.4641643	-104.8057189	0.00
8404.00	90.00	267.84	6846.00	1458.53	1086.02	-1361.84	40.4641539	-104.8060781	0.00
8504.00	90.00	267.84	6846.00	1557.65	1082.26	-1461.77	40.4641436	-104.8064372	0.00
8604.00	90.00	267.84	6846.00	1656.78	1078.49	-1561.70	40.4641332	-104.8067963	0.00
8704.00	90.00	267.84	6846.00	1755.90	1074.73	-1661.63	40.4641229	-104.8071554	0.00
8804.00	90.00	267.84	6846.00	1855.03	1070.96	-1761.56	40.4641125	-104.8075146	0.00
8904.00	90.00	267.84	6846.00	1954.15	1067.20	-1861.49	40.4641022	-104.8078737	0.00
9004.00	90.00	267.84	6846.00	2053.28	1063.44	-1961.42	40.4640918	-104.8082328	0.00
9104.00	90.00	267.84	6846.00	2152.40	1059.67	-2061.35	40.4640815	-104.8085919	0.00
9204.00	90.00	267.84	6846.00	2251.52	1055.91	-2161.28	40.4640711	-104.8089511	0.00
9304.00	90.00	267.84	6846.00	2350.65	1052.14	-2261.21	40.4640608	-104.8093102	0.00
9404.00	90.00	267.84	6846.00	2449.77	1048.38	-2361.13	40.4640504	-104.8096693	0.00
9504.00	90.00	267.84	6846.00	2548.90	1044.62	-2461.06	40.4640401	-104.8100284	0.00
9604.00	90.00	267.84	6846.00	2648.02	1040.85	-2560.99	40.4640297	-104.8103876	0.00
9704.00	90.00	267.84	6846.00	2747.14	1037.09	-2660.92	40.4640193	-104.8107467	0.00
9804.00	90.00	267.84	6846.00	2846.27	1033.32	-2760.85	40.4640090	-104.8111058	0.00
9904.00	90.00	267.84	6846.00	2945.39	1029.56	-2860.78	40.4639986	-104.8114649	0.00
10004.00	90.00	267.84	6846.00	3044.52	1025.80	-2960.71	40.4639882	-104.8118240	0.00
10104.00	90.00	267.84	6846.00	3143.64	1022.03	-3060.64	40.4639779	-104.8121832	0.00
10204.00	90.00	267.84	6846.00	3242.76	1018.27	-3160.57	40.4639675	-104.8125423	0.00
10304.00	90.00	267.84	6846.00	3341.89	1014.50	-3260.50	40.4639571	-104.8129014	0.00
10404.00	90.00	267.84	6846.00	3441.01	1010.74	-3360.43	40.4639468	-104.8132605	0.00
10504.00	90.00	267.84	6846.00	3540.14	1006.98	-3460.36	40.4639364	-104.8136197	0.00
10604.00	90.00	267.84	6846.00	3639.26	1003.21	-3560.28	40.4639260	-104.8139788	0.00
10704.00	90.00	267.84	6846.00	3738.39	999.45	-3660.21	40.4639157	-104.8143379	0.00
10804.00	90.00	267.84	6846.00	3837.51	995.68	-3760.14	40.4639053	-104.8146970	0.00
10904.00	90.00	267.84	6846.00	3936.63	991.92	-3860.07	40.4638949	-104.8150561	0.00
11004.00	90.00	267.84	6846.00	4035.76	988.16	-3960.00	40.4638845	-104.8154153	0.00
11104.00	90.00	267.84	6846.00	4134.88	984.39	-4059.93	40.4638742	-104.8157744	0.00
11204.00	90.00	267.84	6846.00	4234.01	980.63	-4159.86	40.4638638	-104.8161335	0.00
11304.00	90.00	267.84	6846.00	4333.13	976.86	-4259.79	40.4638534	-104.8164926	0.00
11404.00	90.00	267.84	6846.00	4432.25	973.10	-4359.72	40.4638430	-104.8168517	0.00
11504.00	90.00	267.84	6846.00	4531.38	969.34	-4459.65	40.4638326	-104.8172109	0.00
11604.00	90.00	267.84	6846.00	4630.50	965.57	-4559.58	40.4638223	-104.8175700	0.00
11704.00	90.00	267.84	6846.00	4729.63	961.81	-4659.50	40.4638119	-104.8179291	0.00

GOETZEL_4N-30A-M_PWP_REV-C.0_.las									
11804.00	90.00	267.84	6846.00	4828.75	958.04	-4759.43	40.4638015	-104.8182882	0.00
11904.00	90.00	267.84	6846.00	4927.88	954.28	-4859.36	40.4637911	-104.8186473	0.00
12004.00	90.00	267.84	6846.00	5027.00	950.52	-4959.29	40.4637807	-104.8190065	0.00
12104.00	90.00	267.84	6846.00	5126.12	946.75	-5059.22	40.4637703	-104.8193656	0.00
12204.00	90.00	267.84	6846.00	5225.25	942.99	-5159.15	40.4637600	-104.8197247	0.00
12304.00	90.00	267.84	6846.00	5324.37	939.22	-5259.08	40.4637496	-104.8200838	0.00
12404.00	90.00	267.84	6846.00	5423.50	935.46	-5359.01	40.4637392	-104.8204429	0.00
12504.00	90.00	267.84	6846.00	5522.62	931.70	-5458.94	40.4637288	-104.8208021	0.00
12604.00	90.00	267.84	6846.00	5621.74	927.93	-5558.87	40.4637184	-104.8211612	0.00
12704.00	90.00	267.84	6846.00	5720.87	924.17	-5658.80	40.4637080	-104.8215203	0.00
12804.00	90.00	267.84	6846.00	5819.99	920.40	-5758.73	40.4636976	-104.8218794	0.00
12904.00	90.00	267.84	6846.00	5919.12	916.64	-5858.65	40.4636872	-104.8222385	0.00
13004.00	90.00	267.84	6846.00	6018.24	912.88	-5958.58	40.4636768	-104.8225977	0.00
13104.00	90.00	267.84	6846.00	6117.36	909.11	-6058.51	40.4636664	-104.8229568	0.00
13204.00	90.00	267.84	6846.00	6216.49	905.35	-6158.44	40.4636560	-104.8233159	0.00
13304.00	90.00	267.84	6846.00	6315.61	901.58	-6258.37	40.4636456	-104.8236750	0.00
13404.00	90.00	267.84	6846.00	6414.74	897.82	-6358.30	40.4636352	-104.8240341	0.00
13504.00	90.00	267.84	6846.00	6513.86	894.06	-6458.23	40.4636248	-104.8243933	0.00
13604.00	90.00	267.84	6846.00	6612.99	890.29	-6558.16	40.4636144	-104.8247524	0.00
13704.00	90.00	267.84	6846.00	6712.11	886.53	-6658.09	40.4636040	-104.8251115	0.00
13804.00	90.00	267.84	6846.00	6811.23	882.76	-6758.02	40.4635936	-104.8254706	0.00
13904.00	90.00	267.84	6846.00	6910.36	879.00	-6857.95	40.4635832	-104.8258297	0.00
14004.00	90.00	267.84	6846.00	7009.48	875.24	-6957.87	40.4635728	-104.8261888	0.00
14104.00	90.00	267.84	6846.00	7108.61	871.47	-7057.80	40.4635624	-104.8265480	0.00
14204.00	90.00	267.84	6846.00	7207.73	867.71	-7157.73	40.4635519	-104.8269071	0.00
14304.00	90.00	267.84	6846.00	7306.85	863.94	-7257.66	40.4635415	-104.8272662	0.00
14404.00	90.00	267.84	6846.00	7405.98	860.18	-7357.59	40.4635311	-104.8276253	0.00
14504.00	90.00	267.84	6846.00	7505.10	856.42	-7457.52	40.4635207	-104.8279844	0.00
14604.00	90.00	267.84	6846.00	7604.23	852.65	-7557.45	40.4635103	-104.8283435	0.00
14704.00	90.00	267.84	6846.00	7703.35	848.89	-7657.38	40.4634999	-104.8287027	0.00
14804.00	90.00	267.84	6846.00	7802.47	845.12	-7757.31	40.4634895	-104.8290618	0.00
14904.00	90.00	267.84	6846.00	7901.60	841.36	-7857.24	40.4634790	-104.8294209	0.00
15004.00	90.00	267.84	6846.00	8000.72	837.60	-7957.17	40.4634686	-104.8297800	0.00
15104.00	90.00	267.84	6846.00	8099.85	833.83	-8057.10	40.4634582	-104.8301391	0.00
15204.00	90.00	267.84	6846.00	8198.97	830.07	-8157.02	40.4634478	-104.8304982	0.00
15304.00	90.00	267.84	6846.00	8298.10	826.30	-8256.95	40.4634374	-104.8308574	0.00
15404.00	90.00	267.84	6846.00	8397.22	822.54	-8356.88	40.4634269	-104.8312165	0.00
15504.00	90.00	267.84	6846.00	8496.34	818.78	-8456.81	40.4634165	-104.8315756	0.00
15604.00	90.00	267.84	6846.00	8595.47	815.01	-8556.74	40.4634061	-104.8319347	0.00
15614.38	90.00	267.84	6846.00	8605.76	814.62	-8567.12	40.4634050	-104.8319720	0.00



Planned Wellpath Report

GOETZEL 4N-30A-M PWP (REV-C.0)

Page 1 of 8



REFERENCE WELLPATH IDENTIFICATION

Operator	SYNERGY RESOURCES CORPORATION	Slot	SLOT#04 GOETZEL 4N-30A-M (1873'FNL & 2446'FEL, SEC.29)
Area	COLORADO	Well	GOETZEL 4N-30A-M
Field	WELD COUNTY (NAD83,TRUE NORTH)	Wellbore	GOETZEL 4N-30A-M PWB
Facility	SEC.29-T06N-R66W		

REPORT SETUP INFORMATION

Projection System	NAD83 / Lambert Colorado SP, Northern Zone (501), US feet	Software System	WellArchitect® 5.0
North Reference	True	User	Wagnjam
Scale	0.999964	Report Generated	2/23/2017 at 7:17:16 PM
Convergence at slot	0.46° East	Database/Source file	WA_DEN_Denver_Defn/GOETZEL_4N-30A-M_PWP__REV-C.0_.xml

WELLPATH LOCATION

	Local coordinates		Grid coordinates		Geographic coordinates	
	North[ft]	East[ft]	Easting[US ft]	Northing[US ft]	Latitude	Longitude
Slot Location	-60.11	-0.23	3194449.89	1411611.90	40°27'40.223"N	104°48'04.262"W
Facility Reference Pt			3194449.65	1411672.01	40°27'40.817"N	104°48'04.259"W
Field Reference Pt			3171284.48	1426358.81	40°30'07.643"N	104°53'02.634"W

WELLPATH DATUM

Calculation method	Minimum curvature	PROPETRO 12 (4') (RKB) to Facility Vertical Datum	4732.00ft
Horizontal Reference Pt	Slot	PROPETRO 12 (4') (RKB) to Mean Sea Level	4732.00ft
Vertical Reference Pt	PROPETRO 12 (4') (RKB)	PROPETRO 12 (4') (RKB) to Mud Line at Slot (SLOT#04 GOETZEL 4N-30A-M (1873'FNL & 2446'FEL, SEC.29))	4732.00ft
MD Reference Pt	PROPETRO 12 (4') (RKB)	Section Origin	N 0.00, E 0.00 ft
Field Vertical Reference	Mean Sea Level	Section Azimuth	275.43°



Planned Wellpath Report

GOETZEL 4N-30A-M PWP (REV-C.0)

Page 2 of 8



REFERENCE WELLPATH IDENTIFICATION

Operator	SYNERGY RESOURCES CORPORATION	Slot	SLOT#04 GOETZEL 4N-30A-M (1873'FNL & 2446'FEL, SEC.29)
Area	COLORADO	Well	GOETZEL 4N-30A-M
Field	WELD COUNTY (NAD83,TRUE NORTH)	Wellbore	GOETZEL 4N-30A-M PWB
Facility	SEC.29-T06N-R66W		

WELLPATH DATA (163 stations) † = interpolated/extrapolated station

MD [ft]	Inclination [°]	Azimuth [°]	TVD [ft]	Vert Sect [ft]	North [ft]	East [ft]	DLS [°/100ft]	Comments
0.00†	0.000	18.954	0.00	0.00	0.00	0.00	0.00	
4.00	0.000	18.954	4.00	0.00	0.00	0.00	0.00	Tie On
104.00†	0.000	18.954	104.00	0.00	0.00	0.00	0.00	
204.00†	0.000	18.954	204.00	0.00	0.00	0.00	0.00	
304.00†	0.000	18.954	304.00	0.00	0.00	0.00	0.00	
404.00†	0.000	18.954	404.00	0.00	0.00	0.00	0.00	
504.00†	0.000	18.954	504.00	0.00	0.00	0.00	0.00	
604.00†	0.000	18.954	604.00	0.00	0.00	0.00	0.00	
650.00	0.000	18.954	650.00	0.00	0.00	0.00	0.00	End of Tangent
704.00†	1.080	18.954	704.00	-0.12	0.48	0.17	2.00	
804.00†	3.080	18.954	803.93	-0.97	3.91	1.34	2.00	
904.00†	5.080	18.954	903.67	-2.63	10.64	3.66	2.00	
1004.00†	7.080	18.954	1003.10	-5.11	20.66	7.10	2.00	
1104.00†	9.080	18.954	1102.10	-8.39	33.95	11.66	2.00	
1204.00†	11.080	18.954	1200.55	-12.49	50.50	17.34	2.00	
1233.01	11.660	18.954	1228.99	-13.82	55.91	19.20	2.00	End of Build
1304.00†	11.660	18.954	1298.52	-17.18	69.48	23.86	0.00	
1404.00†	11.660	18.954	1396.46	-21.90	88.60	30.43	0.00	
1504.00†	11.660	18.954	1494.39	-26.63	107.71	36.99	0.00	
1604.00†	11.660	18.954	1592.33	-31.36	126.83	43.56	0.00	
1704.00†	11.660	18.954	1690.26	-36.08	145.94	50.12	0.00	
1804.00†	11.660	18.954	1788.20	-40.81	165.06	56.69	0.00	
1904.00†	11.660	18.954	1886.14	-45.53	184.17	63.25	0.00	
2004.00†	11.660	18.954	1984.07	-50.26	203.29	69.82	0.00	
2104.00†	11.660	18.954	2082.01	-54.98	222.40	76.38	0.00	
2204.00†	11.660	18.954	2179.95	-59.71	241.52	82.94	0.00	
2304.00†	11.660	18.954	2277.88	-64.44	260.63	89.51	0.00	
2404.00†	11.660	18.954	2375.82	-69.16	279.75	96.07	0.00	
2504.00†	11.660	18.954	2473.76	-73.89	298.86	102.64	0.00	
2604.00†	11.660	18.954	2571.69	-78.61	317.98	109.20	0.00	



Planned Wellpath Report

GOETZEL 4N-30A-M PWP (REV-C.0)

Page 3 of 8



REFERENCE WELLPATH IDENTIFICATION

Operator	SYNERGY RESOURCES CORPORATION	Slot	SLOT#04 GOETZEL 4N-30A-M (1873'FNL & 2446'FEL, SEC.29)
Area	COLORADO	Well	GOETZEL 4N-30A-M
Field	WELD COUNTY (NAD83,TRUE NORTH)	Wellbore	GOETZEL 4N-30A-M PWB
Facility	SEC.29-T06N-R66W		

WELLPATH DATA (163 stations) † = interpolated/extrapolated station

MD [ft]	Inclination [°]	Azimuth [°]	TVD [ft]	Vert Sect [ft]	North [ft]	East [ft]	DLS [°/100ft]	Comments
2704.00†	11.660	18.954	2669.63	-83.34	337.09	115.77	0.00	
2804.00†	11.660	18.954	2767.56	-88.07	356.21	122.33	0.00	
2904.00†	11.660	18.954	2865.50	-92.79	375.32	128.90	0.00	
3004.00†	11.660	18.954	2963.44	-97.52	394.44	135.46	0.00	
3104.00†	11.660	18.954	3061.37	-102.24	413.55	142.03	0.00	
3204.00†	11.660	18.954	3159.31	-106.97	432.67	148.59	0.00	
3304.00†	11.660	18.954	3257.25	-111.69	451.78	155.16	0.00	
3404.00†	11.660	18.954	3355.18	-116.42	470.90	161.72	0.00	
3504.00†	11.660	18.954	3453.12	-121.15	490.01	168.29	0.00	
3604.00†	11.660	18.954	3551.05	-125.87	509.13	174.85	0.00	
3704.00†	11.660	18.954	3648.99	-130.60	528.24	181.42	0.00	
3804.00†	11.660	18.954	3746.93	-135.32	547.36	187.98	0.00	
3904.00†	11.660	18.954	3844.86	-140.05	566.47	194.54	0.00	
4004.00†	11.660	18.954	3942.80	-144.77	585.59	201.11	0.00	
4104.00†	11.660	18.954	4040.74	-149.50	604.70	207.67	0.00	
4204.00†	11.660	18.954	4138.67	-154.23	623.82	214.24	0.00	
4304.00†	11.660	18.954	4236.61	-158.95	642.93	220.80	0.00	
4404.00†	11.660	18.954	4334.55	-163.68	662.04	227.37	0.00	
4504.00†	11.660	18.954	4432.48	-168.40	681.16	233.93	0.00	
4604.00†	11.660	18.954	4530.42	-173.13	700.27	240.50	0.00	
4704.00†	11.660	18.954	4628.35	-177.86	719.39	247.06	0.00	
4804.00†	11.660	18.954	4726.29	-182.58	738.50	253.63	0.00	
4904.00†	11.660	18.954	4824.23	-187.31	757.62	260.19	0.00	
5004.00†	11.660	18.954	4922.16	-192.03	776.73	266.76	0.00	
5104.00†	11.660	18.954	5020.10	-196.76	795.85	273.32	0.00	
5204.00†	11.660	18.954	5118.04	-201.48	814.96	279.89	0.00	
5304.00†	11.660	18.954	5215.97	-206.21	834.08	286.45	0.00	
5404.00†	11.660	18.954	5313.91	-210.94	853.19	293.01	0.00	
5504.00†	11.660	18.954	5411.85	-215.66	872.31	299.58	0.00	
5604.00†	11.660	18.954	5509.78	-220.39	891.42	306.14	0.00	



Planned Wellpath Report

GOETZEL 4N-30A-M PWP (REV-C.0)

Page 4 of 8



REFERENCE WELLPATH IDENTIFICATION

Operator	SYNERGY RESOURCES CORPORATION	Slot	SLOT#04 GOETZEL 4N-30A-M (1873'FNL & 2446'FEL, SEC.29)
Area	COLORADO	Well	GOETZEL 4N-30A-M
Field	WELD COUNTY (NAD83,TRUE NORTH)	Wellbore	GOETZEL 4N-30A-M PWB
Facility	SEC.29-T06N-R66W		

WELLPATH DATA (163 stations) † = interpolated/extrapolated station

MD [ft]	Inclination [°]	Azimuth [°]	TVD [ft]	Vert Sect [ft]	North [ft]	East [ft]	DLS [°/100ft]	Comments
5704.00†	11.660	18.954	5607.72	-225.11	910.54	312.71	0.00	
5804.00†	11.660	18.954	5705.65	-229.84	929.65	319.27	0.00	
5904.00†	11.660	18.954	5803.59	-234.56	948.77	325.84	0.00	
6004.00†	11.660	18.954	5901.53	-239.29	967.88	332.40	0.00	
6104.00†	11.660	18.954	5999.46	-244.02	987.00	338.97	0.00	
6204.00†	11.660	18.954	6097.40	-248.74	1006.11	345.53	0.00	
6283.60	11.660	18.954	6175.35	-252.50	1021.33	350.76	0.00	End of Tangent
6304.00†	11.142	10.031	6195.36	-253.14	1025.22	351.77	9.00	
6404.00†	12.751	326.133	6293.38	-246.92	1043.94	347.29	9.00	
6504.00†	19.002	301.833	6389.62	-225.30	1061.72	327.27	9.00	
6604.00†	26.824	290.221	6481.71	-188.83	1078.14	292.20	9.00	
6704.00†	35.183	283.690	6567.37	-138.40	1092.79	242.93	9.00	
6804.00†	43.771	279.436	6644.50	-75.25	1105.30	180.69	9.00	
6904.00†	52.474	276.346	6711.20	-0.95	1115.38	107.01	9.00	
7004.00†	61.241	273.908	6765.82	82.69	1122.76	23.70	9.00	
7104.00†	70.044	271.851	6807.03	173.60	1127.28	-67.19	9.00	
7204.00†	78.869	270.014	6833.80	269.54	1128.81	-163.43	9.00	
7304.00†	87.704	268.285	6845.48	368.16	1127.32	-262.63	9.00	
7329.98	90.000	267.843	6846.00†	393.92	1126.45	-288.58	9.00	End of 3D Arc
7404.00†	90.000	267.843	6846.00	467.29	1123.66	-362.55	0.00	
7504.00†	90.000	267.843	6846.00	566.41	1119.90	-462.48	0.00	
7604.00†	90.000	267.843	6846.00	665.54	1116.13	-562.41	0.00	
7704.00†	90.000	267.843	6846.00	764.66	1112.37	-662.34	0.00	
7804.00†	90.000	267.843	6846.00	863.79	1108.60	-762.27	0.00	
7904.00†	90.000	267.843	6846.00	962.91	1104.84	-862.20	0.00	
8004.00†	90.000	267.843	6846.00	1062.03	1101.08	-962.13	0.00	
8104.00†	90.000	267.843	6846.00	1161.16	1097.31	-1062.06	0.00	
8204.00†	90.000	267.843	6846.00	1260.28	1093.55	-1161.99	0.00	
8304.00†	90.000	267.843	6846.00	1359.41	1089.78	-1261.91	0.00	
8404.00†	90.000	267.843	6846.00	1458.53	1086.02	-1361.84	0.00	



Planned Wellpath Report

GOETZEL 4N-30A-M PWP (REV-C.0)

Page 5 of 8



REFERENCE WELLPATH IDENTIFICATION

Operator	SYNERGY RESOURCES CORPORATION	Slot	SLOT#04 GOETZEL 4N-30A-M (1873'FNL & 2446'FEL, SEC.29)
Area	COLORADO	Well	GOETZEL 4N-30A-M
Field	WELD COUNTY (NAD83,TRUE NORTH)	Wellbore	GOETZEL 4N-30A-M PWB
Facility	SEC.29-T06N-R66W		

WELLPATH DATA (163 stations) † = interpolated/extrapolated station

MD [ft]	Inclination [°]	Azimuth [°]	TVD [ft]	Vert Sect [ft]	North [ft]	East [ft]	DLS [°/100ft]	Comments
8504.00†	90.000	267.843	6846.00	1557.65	1082.26	-1461.77	0.00	
8604.00†	90.000	267.843	6846.00	1656.78	1078.49	-1561.70	0.00	
8704.00†	90.000	267.843	6846.00	1755.90	1074.73	-1661.63	0.00	
8804.00†	90.000	267.843	6846.00	1855.03	1070.96	-1761.56	0.00	
8904.00†	90.000	267.843	6846.00	1954.15	1067.20	-1861.49	0.00	
9004.00†	90.000	267.843	6846.00	2053.28	1063.44	-1961.42	0.00	
9104.00†	90.000	267.843	6846.00	2152.40	1059.67	-2061.35	0.00	
9204.00†	90.000	267.843	6846.00	2251.52	1055.91	-2161.28	0.00	
9304.00†	90.000	267.843	6846.00	2350.65	1052.14	-2261.21	0.00	
9404.00†	90.000	267.843	6846.00	2449.77	1048.38	-2361.13	0.00	
9504.00†	90.000	267.843	6846.00	2548.90	1044.62	-2461.06	0.00	
9604.00†	90.000	267.843	6846.00	2648.02	1040.85	-2560.99	0.00	
9704.00†	90.000	267.843	6846.00	2747.14	1037.09	-2660.92	0.00	
9804.00†	90.000	267.843	6846.00	2846.27	1033.32	-2760.85	0.00	
9904.00†	90.000	267.843	6846.00	2945.39	1029.56	-2860.78	0.00	
10004.00†	90.000	267.843	6846.00	3044.52	1025.80	-2960.71	0.00	
10104.00†	90.000	267.843	6846.00	3143.64	1022.03	-3060.64	0.00	
10204.00†	90.000	267.843	6846.00	3242.76	1018.27	-3160.57	0.00	
10304.00†	90.000	267.843	6846.00	3341.89	1014.50	-3260.50	0.00	
10404.00†	90.000	267.843	6846.00	3441.01	1010.74	-3360.43	0.00	
10504.00†	90.000	267.843	6846.00	3540.14	1006.98	-3460.36	0.00	
10604.00†	90.000	267.843	6846.00	3639.26	1003.21	-3560.28	0.00	
10704.00†	90.000	267.843	6846.00	3738.39	999.45	-3660.21	0.00	
10804.00†	90.000	267.843	6846.00	3837.51	995.68	-3760.14	0.00	
10904.00†	90.000	267.843	6846.00	3936.63	991.92	-3860.07	0.00	
11004.00†	90.000	267.843	6846.00	4035.76	988.16	-3960.00	0.00	
11104.00†	90.000	267.843	6846.00	4134.88	984.39	-4059.93	0.00	
11204.00†	90.000	267.843	6846.00	4234.01	980.63	-4159.86	0.00	
11304.00†	90.000	267.843	6846.00	4333.13	976.86	-4259.79	0.00	
11404.00†	90.000	267.843	6846.00	4432.25	973.10	-4359.72	0.00	



Planned Wellpath Report

GOETZEL 4N-30A-M PWP (REV-C.0)

Page 6 of 8



REFERENCE WELLPATH IDENTIFICATION

Operator	SYNERGY RESOURCES CORPORATION	Slot	SLOT#04 GOETZEL 4N-30A-M (1873'FNL & 2446'FEL, SEC.29)
Area	COLORADO	Well	GOETZEL 4N-30A-M
Field	WELD COUNTY (NAD83,TRUE NORTH)	Wellbore	GOETZEL 4N-30A-M PWB
Facility	SEC.29-T06N-R66W		

WELLPATH DATA (163 stations) † = interpolated/extrapolated station

MD [ft]	Inclination [°]	Azimuth [°]	TVD [ft]	Vert Sect [ft]	North [ft]	East [ft]	DLS [°/100ft]	Comments
11504.00†	90.000	267.843	6846.00	4531.38	969.34	-4459.65	0.00	
11604.00†	90.000	267.843	6846.00	4630.50	965.57	-4559.58	0.00	
11704.00†	90.000	267.843	6846.00	4729.63	961.81	-4659.50	0.00	
11804.00†	90.000	267.843	6846.00	4828.75	958.04	-4759.43	0.00	
11904.00†	90.000	267.843	6846.00	4927.88	954.28	-4859.36	0.00	
12004.00†	90.000	267.843	6846.00	5027.00	950.52	-4959.29	0.00	
12104.00†	90.000	267.843	6846.00	5126.12	946.75	-5059.22	0.00	
12204.00†	90.000	267.843	6846.00	5225.25	942.99	-5159.15	0.00	
12304.00†	90.000	267.843	6846.00	5324.37	939.22	-5259.08	0.00	
12404.00†	90.000	267.843	6846.00	5423.50	935.46	-5359.01	0.00	
12504.00†	90.000	267.843	6846.00	5522.62	931.70	-5458.94	0.00	
12604.00†	90.000	267.843	6846.00	5621.74	927.93	-5558.87	0.00	
12704.00†	90.000	267.843	6846.00	5720.87	924.17	-5658.80	0.00	
12804.00†	90.000	267.843	6846.00	5819.99	920.40	-5758.73	0.00	
12904.00†	90.000	267.843	6846.00	5919.12	916.64	-5858.65	0.00	
13004.00†	90.000	267.843	6846.00	6018.24	912.88	-5958.58	0.00	
13104.00†	90.000	267.843	6846.00	6117.36	909.11	-6058.51	0.00	
13204.00†	90.000	267.843	6846.00	6216.49	905.35	-6158.44	0.00	
13304.00†	90.000	267.843	6846.00	6315.61	901.58	-6258.37	0.00	
13404.00†	90.000	267.843	6846.00	6414.74	897.82	-6358.30	0.00	
13504.00†	90.000	267.843	6846.00	6513.86	894.06	-6458.23	0.00	
13604.00†	90.000	267.843	6846.00	6612.99	890.29	-6558.16	0.00	
13704.00†	90.000	267.843	6846.00	6712.11	886.53	-6658.09	0.00	
13804.00†	90.000	267.843	6846.00	6811.23	882.76	-6758.02	0.00	
13904.00†	90.000	267.843	6846.00	6910.36	879.00	-6857.95	0.00	
14004.00†	90.000	267.843	6846.00	7009.48	875.24	-6957.87	0.00	
14104.00†	90.000	267.843	6846.00	7108.61	871.47	-7057.80	0.00	
14204.00†	90.000	267.843	6846.00	7207.73	867.71	-7157.73	0.00	
14304.00†	90.000	267.843	6846.00	7306.85	863.94	-7257.66	0.00	
14404.00†	90.000	267.843	6846.00	7405.98	860.18	-7357.59	0.00	



Planned Wellpath Report

GOETZEL 4N-30A-M PWP (REV-C.0)

Page 7 of 8



REFERENCE WELLPATH IDENTIFICATION

Operator	SYNERGY RESOURCES CORPORATION	Slot	SLOT#04 GOETZEL 4N-30A-M (1873'FNL & 2446'FEL, SEC.29)
Area	COLORADO	Well	GOETZEL 4N-30A-M
Field	WELD COUNTY (NAD83,TRUE NORTH)	Wellbore	GOETZEL 4N-30A-M PWB
Facility	SEC.29-T06N-R66W		

WELLPATH DATA (163 stations) † = interpolated/extrapolated station

MD [ft]	Inclination [°]	Azimuth [°]	TVD [ft]	Vert Sect [ft]	North [ft]	East [ft]	DLS [°/100ft]	Comments
14504.00†	90.000	267.843	6846.00	7505.10	856.42	-7457.52	0.00	
14604.00†	90.000	267.843	6846.00	7604.23	852.65	-7557.45	0.00	
14704.00†	90.000	267.843	6846.00	7703.35	848.89	-7657.38	0.00	
14804.00†	90.000	267.843	6846.00	7802.47	845.12	-7757.31	0.00	
14904.00†	90.000	267.843	6846.00	7901.60	841.36	-7857.24	0.00	
15004.00†	90.000	267.843	6846.00	8000.72	837.60	-7957.17	0.00	
15104.00†	90.000	267.843	6846.00	8099.85	833.83	-8057.10	0.00	
15204.00†	90.000	267.843	6846.00	8198.97	830.07	-8157.02	0.00	
15304.00†	90.000	267.843	6846.00	8298.10	826.30	-8256.95	0.00	
15404.00†	90.000	267.843	6846.00	8397.22	822.54	-8356.88	0.00	
15504.00†	90.000	267.843	6846.00	8496.34	818.78	-8456.81	0.00	
15604.00†	90.000	267.843	6846.00	8595.47	815.01	-8556.74	0.00	
15614.38	90.000	267.843	6846.00 ²	8605.76	814.62	-8567.12	0.00	End of Tangent

HOLE & CASING SECTIONS - Ref Wellbore: GOETZEL 4N-30A-M PWB Ref Wellpath: GOETZEL 4N-30A-M PWP (REV-C.0)

String/Diameter	Start MD [ft]	End MD [ft]	Interval [ft]	Start TVD [ft]	End TVD [ft]	Start N/S [ft]	Start E/W [ft]	End N/S [ft]	End E/W [ft]
13.5in Open Hole	4.00	1700.00	1696.00	4.00	1686.35	0.00	0.00	145.18	49.86
9.625in Casing Surface	4.00	1700.00	1696.00	4.00	1686.35	0.00	0.00	145.18	49.86
8.5in Open Hole	1700.00	15614.38	13914.38	1686.35	6846.00	145.18	49.86	814.62	-8567.12



Planned Wellpath Report

GOETZEL 4N-30A-M PWP (REV-C.0)

Page 8 of 8



REFERENCE WELLPATH IDENTIFICATION

Operator	SYNERGY RESOURCES CORPORATION	Slot	SLOT#04 GOETZEL 4N-30A-M (1873'FNL & 2446'FEL, SEC.29)
Area	COLORADO	Well	GOETZEL 4N-30A-M
Field	WELD COUNTY (NAD83,TRUE NORTH)	Wellbore	GOETZEL 4N-30A-M PWB
Facility	SEC.29-T06N-R66W		

TARGETS

Name	MD [ft]	TVD [ft]	North [ft]	East [ft]	Grid East [US ft]	Grid North [US ft]	Latitude	Longitude	Shape
SEC.29-T06N-R66W NORTHERN		-16.00	60.09	0.25	3194449.66	1411671.99	40°27'40.817"N	104°48'04.259"W	polygon
SEC.29-T06N-R66W SOUTHERN		-16.00	60.09	0.25	3194449.66	1411671.99	40°27'40.817"N	104°48'04.259"W	polygon
SEC.30-T06N-R66W NORTHERN		-16.00	60.09	0.25	3194449.66	1411671.99	40°27'40.817"N	104°48'04.259"W	polygon
SEC.30-T06N-R66W SOUTHERN		-16.00	60.09	0.25	3194449.66	1411671.99	40°27'40.817"N	104°48'04.259"W	polygon
GOETZEL 4N-30A-M BHL REV-1 (746'FNL & 510'FWL, SEC.29)		6846.00	833.44	-8207.04	3186236.85	1412380.61	40°27'48.445"N	104°49'50.441"W	circle
2) GOETZEL 4N-30A-M BHL REV-2 (746'FNL & 150'FWL, SEC.29)	15614.38	6846.00	814.62	-8567.12	3185876.95	1412358.95	40°27'48.258"N	104°49'55.099"W	point
1) GOETZEL 4N-30A-M TOP REV-1 (741'FNL & 2589'FWL, SEC.29)	7329.98	6846.00	1126.45	-288.58	3194152.45	1412735.99	40°27'51.354"N	104°48'07.996"W	circle

SURVEY PROGRAM - Ref Wellbore: GOETZEL 4N-30A-M PWB Ref Wellpath: GOETZEL 4N-30A-M PWP (REV-C.0)

Start MD [ft]	End MD [ft]	Positional Uncertainty Model	Log Name/Comment	Wellbore
4.00	1700.00	Custom BHI NaviTrak (Standard Rotating) (Rockies 0.03Gt model)		GOETZEL 4N-30A-M PWB
1700.00	15615.00	Custom BHI AutoTrak Curve (IFR1, Short) (Rockies 0.03Gt model)		GOETZEL 4N-30A-M PWB