

LEGEND:

- └─ = 90° SYMBOL
● = PROPOSED WELLHEAD.
◆ = HEEL.
○ = TARGET BOTTOM HOLE.
▲ = SECTION CORNERS LOCATED. (NAD 83)

T11N, R63W, 6th P.M.

2009 Alum. Cap,
#17492, 0.5' Below
Road Surface
Lat: 40.944096°
Long: 104.428467°

2009 Alum. Cap,
#17492, 1.0' Below
Ground, Gravel Road
Lat: 40.944132°
Long: 104.419047°

1921 Brass Cap,
1.2' Below Ground,
Gravel Road
Lat: 40.944161°
Long: 104.409628°

2009 Alum. Cap,
#17492, 0.7' Below
Road Surface
Lat: 40.936919°
Long: 104.409572°

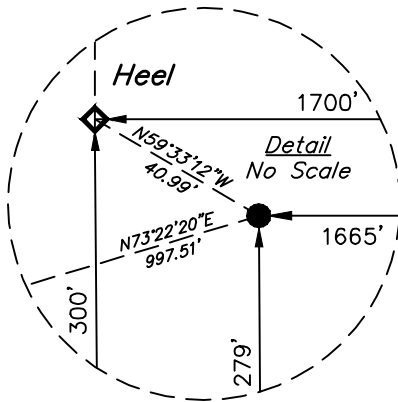
2009 Alum. Cap,
#17492
Lat: 40.929681°
Long: 104.409519°

2009 Alum. Cap,
#17492, 0.4' Below
Ground
Lat: 40.922456°
Long: 104.409517°

2009 Alum. Cap,
#17492
Lat: 40.915222°
Long: 104.409506°

2009 Alum. Cap,
#17492, 0.5' Below
Road Surface
Lat: 40.929660°
Long: 104.418994°

2009 Alum. Cap,
0.4' Below Ground
Lat: 40.915169°
Long: 104.418983°



CRITTER CREEK #230-1510H
Elev. Ungraded Ground = 5227.6'

See Detail
@ Upper Left

PDOP = 1.2



NAD 83 (SURFACE LOCATION)	NAD 83 (HEEL)	NAD 83 (TARGET BOTTOM HOLE)
LATITUDE = 40°54'57.43" (40.915953)	LATITUDE = 40°54'57.64" (40.916011)	LATITUDE = 40°56'35.94" (40.943317)
LONGITUDE = 104°24'55.90" (104.415528)	LONGITUDE = 104°24'56.36" (104.415656)	LONGITUDE = 104°24'56.13" (104.415592)
NAD 27 (SURFACE LOCATION)	NAD 27 (HEEL)	NAD 27 (TARGET BOTTOM HOLE)
LATITUDE = 40°54'57.50" (40.915972)	LATITUDE = 40°54'57.70" (40.916028)	LATITUDE = 40°56'36.00" (40.943333)
LONGITUDE = 104°24'54.05" (104.415014)	LONGITUDE = 104°24'54.52" (104.415144)	LONGITUDE = 104°24'54.29" (104.415081)
STATE PLANE NAD 83 (CO. NORTH)	STATE PLANE NAD 83 (CO. NORTH)	STATE PLANE NAD 83 (CO. NORTH)
N: 1578366.88 E: 3299730.63	N: 1578387.20 E: 3299695.04	N: 1588335.84 E: 3299590.60
STATE PLANE NAD 27 (CO. NORTH)	STATE PLANE NAD 27 (CO. NORTH)	STATE PLANE NAD 27 (CO. NORTH)
N: 578364.89 E: 2299880.02	N: 578385.21 E: 2299844.43	N: 588333.65 E: 2299740.05

CERTIFICATE
THIS IS TO CERTIFY THAT THE ABOVE DRAWING WAS PREPARED FROM FIELD
NOTES OF ACTUAL SURVEYS MADE BY ME OR UNDER MY SUPERVISION
AND THAT THE SAME ARE TRUE AND CORRECT TO THE BEST OF MY
KNOWLEDGE AND BELIEF.

REGISTERED LAND SURVEYOR
REGISTRATION NO. 28285
STATE OF COLORADO

REV: 1 02-24-17 T.B. (HEEL CHANGE)

BASIS OF BEARINGS
BASIS OF BEARINGS IS A G.P.S. OBSERVATION

BASIS OF ELEVATION

SPOT ELEVATION LOCATED AT THE NORTHEAST CORNER OF SECTION 1, T11N, R63W,
6th P.M. TAKEN FROM THE HEREFORD, QUADRANGLE, COLORADO, WELD COUNTY, 7.5
MINUTE QUAD (TOPOGRAPHIC MAP) PUBLISHED BY THE UNITED STATES DEPARTMENT
OF THE INTERIOR, GEOLOGICAL SURVEY. SAID ELEVATION IS MARKED AS BEING 5352
FEET.



UELS, LLC
Corporate Office * 85 South 200 East
Vernal, UT 84078 * (435) 789-1017



FIFTH CREEK ENERGY COMPANY, LLC

CRITTER CREEK #230-1510H
SW 1/4 SE 1/4, SECTION 15, T11N, R63W, 6th P.M.
WELD COUNTY, COLORADO

SURVEYED BY	GREG WEIMER, N.P.	01-20-17	SCALE
DRAWN BY	T.B.	01-24-17	1" = 1000'

WELL LOCATION PLAT