

**Longs Peak Resources**  
**Project: Weld County, Co (NAD 83)**  
**Site: Pismo West Pad**  
**Well: Pismo West 2623-6CH**  
**Wellbore: Wellbore #1**  
**Plan: Plan #1 (Pismo West 2623-6CH/Wellbore #1)**



<b>WELL DETAILS: Pismo West 2623-6CH</b>			
<b>Ground Elevation:: 6216.00</b>			
<b>RKB Elevation: KB=25 @ 6241.00ft</b>			
<b>Rig Name:</b>			
<b>Northing</b>	<b>Easting</b>	<b>Latitude</b>	<b>Longitude</b>
<b>1598646.5351</b>	<b>3208375.6431</b>	<b>40° 58' 27.156 N</b>	<b>104° 44' 43.512 W</b>

<b>WELL DETAILS: Pismo West 2623-6CH</b>			
<b>Ground Elevation:: 6216.00</b>			
<b>RKB Elevation: KB=25 @ 6241.00ft</b>			
<b>Rig Name:</b>			
<b>Northing</b>	<b>Easting</b>	<b>Latitude</b>	<b>Longitude</b>
<b>1598646.5351</b>	<b>3208375.6431</b>	<b>40° 58' 27.156 N</b>	<b>104° 44' 43.512 W</b>

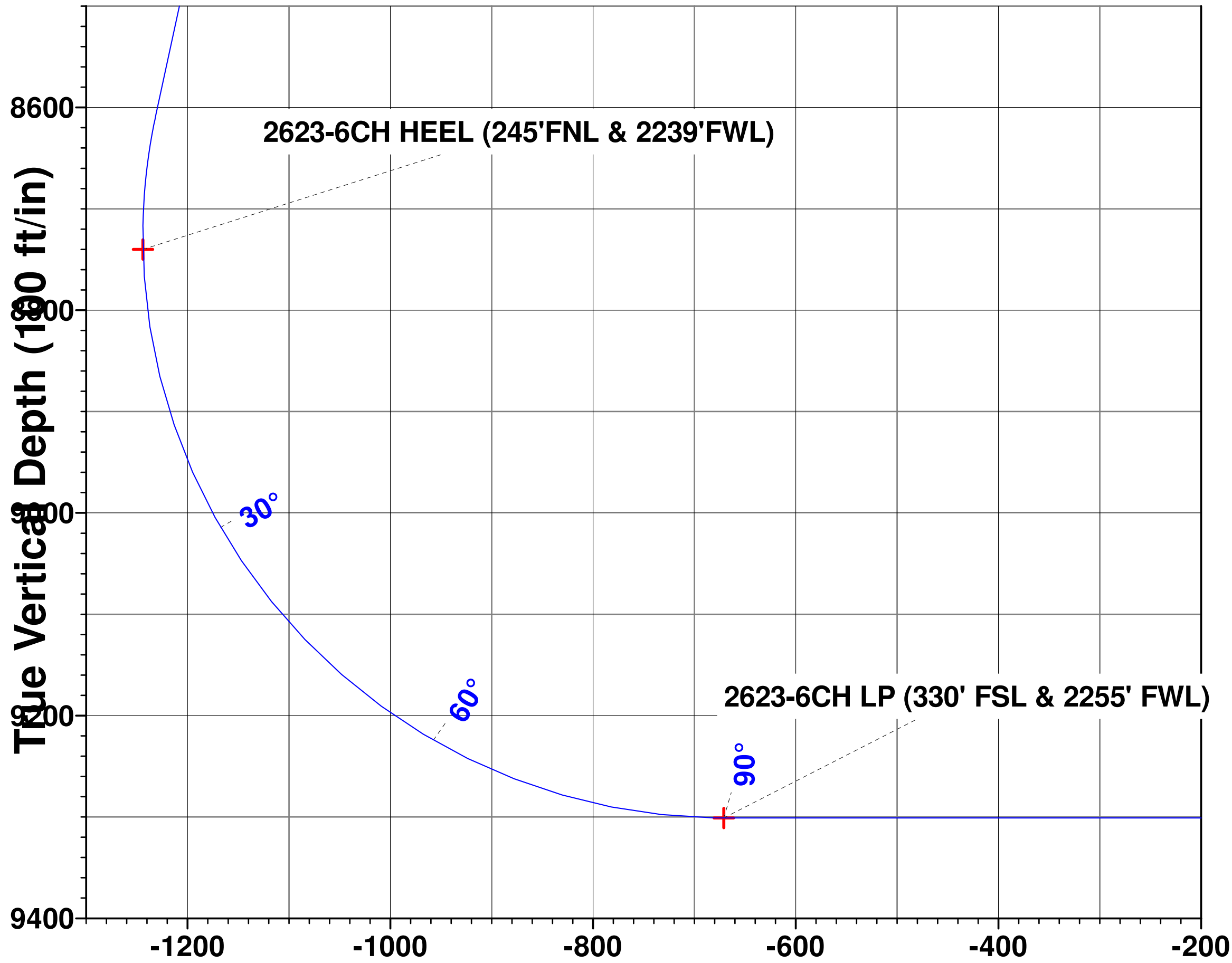
<b>WELL DETAILS: Pismo West 2623-6CH</b>			
<b>Ground Elevation:: 6216.00</b>			
<b>RKB Elevation: KB=25 @ 6241.00ft</b>			
<b>Rig Name:</b>			
<b>Northing</b>	<b>Easting</b>	<b>Latitude</b>	<b>Longitude</b>
<b>1598646.5351</b>	<b>3208375.6431</b>	<b>40° 58' 27.156 N</b>	<b>104° 44' 43.512 W</b>

<b>PROJECT DETAILS:</b> Weld County, Co (NAD 83) Geodetic System: US State Plane 1983 Datum: North American Datum 1983 Ellipsoid: GRS 1980 Zone: Colorado Northern Zone System Datum: Mean Sea Level Local North: Grid
--

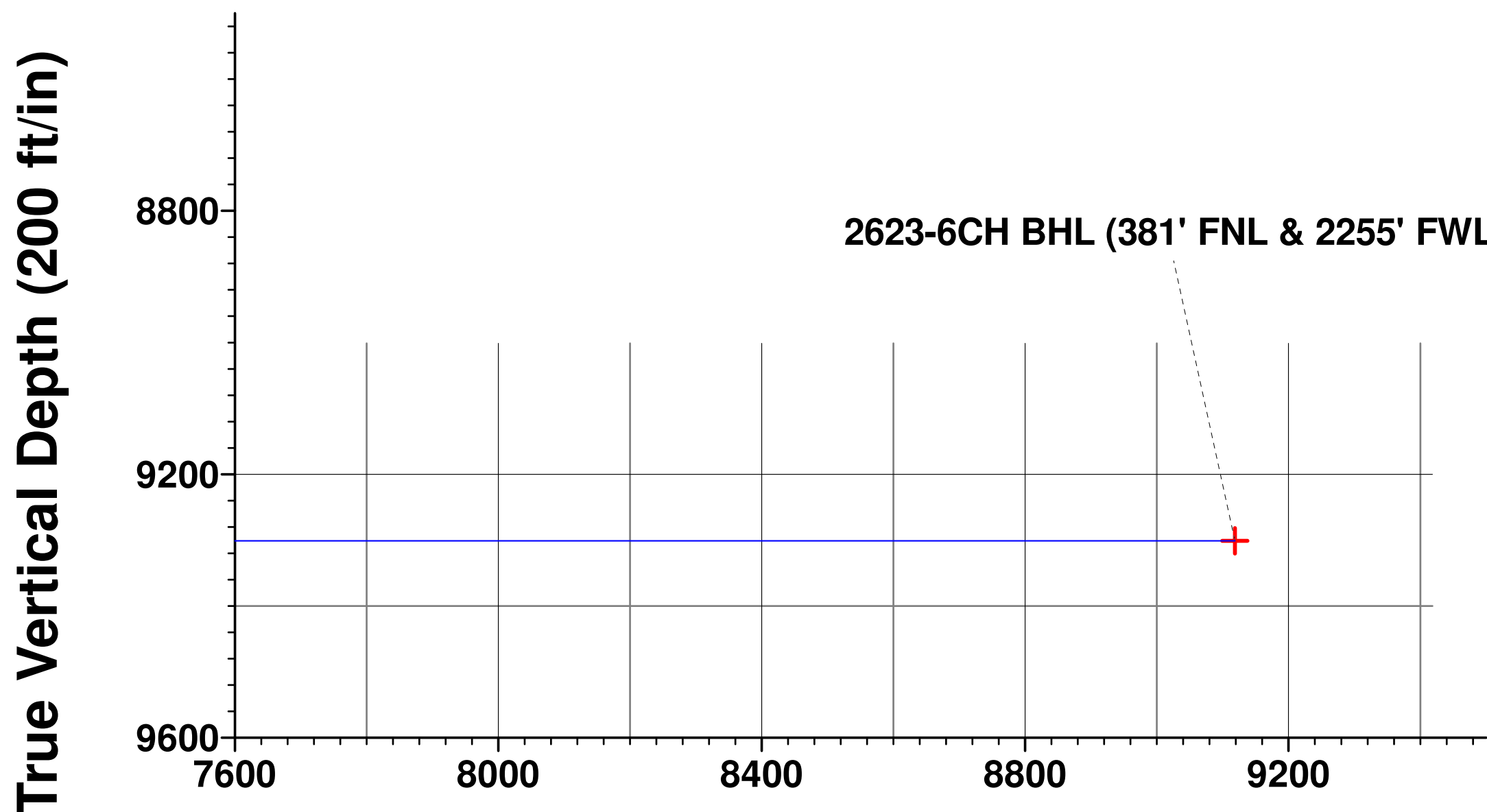
**Azimuths to Grid North**  
**True North: -0.49°**  
**Magnetic North: 8.20°**

**Magnetic Field**  
**Strength: 52740.7snT**  
**Dip Angle: 67.30°**  
**Date: 2/28/2017**  
**Model: HDGM**

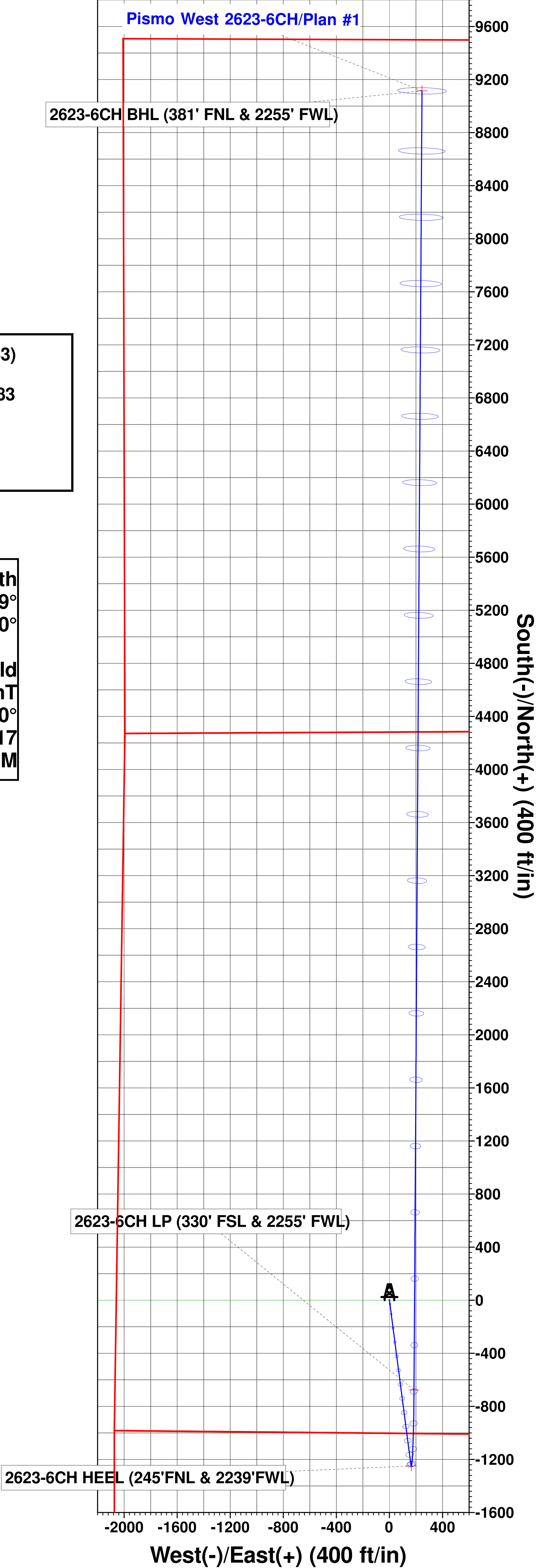
Planned Section Details									
Sec	MD	Inc	Azi	TVD	+N/-S	+E/-W	Dleg	TFace	VSect
1	0.00	0.00	0.00	0.00	0.00	0.00	0.00	0.00	0.00
2	2600.00	0.00	0.00	2600.00	0.00	0.00	0.00	0.00	0.00
3	3217.03	12.34	172.57	3212.27	-65.64	8.56	2.00	172.57	-65.38
4	8739.38	12.34	172.57	8607.02	-1235.97	161.26	0.00	0.00	-1231.18
5	9761.63	90.00	0.35	9301.00	-676.14	185.26	10.00	-172.03	-670.91
6	19553.13	90.00	0.35	9301.00	9115.18	245.42	0.00	0.00	9118.48



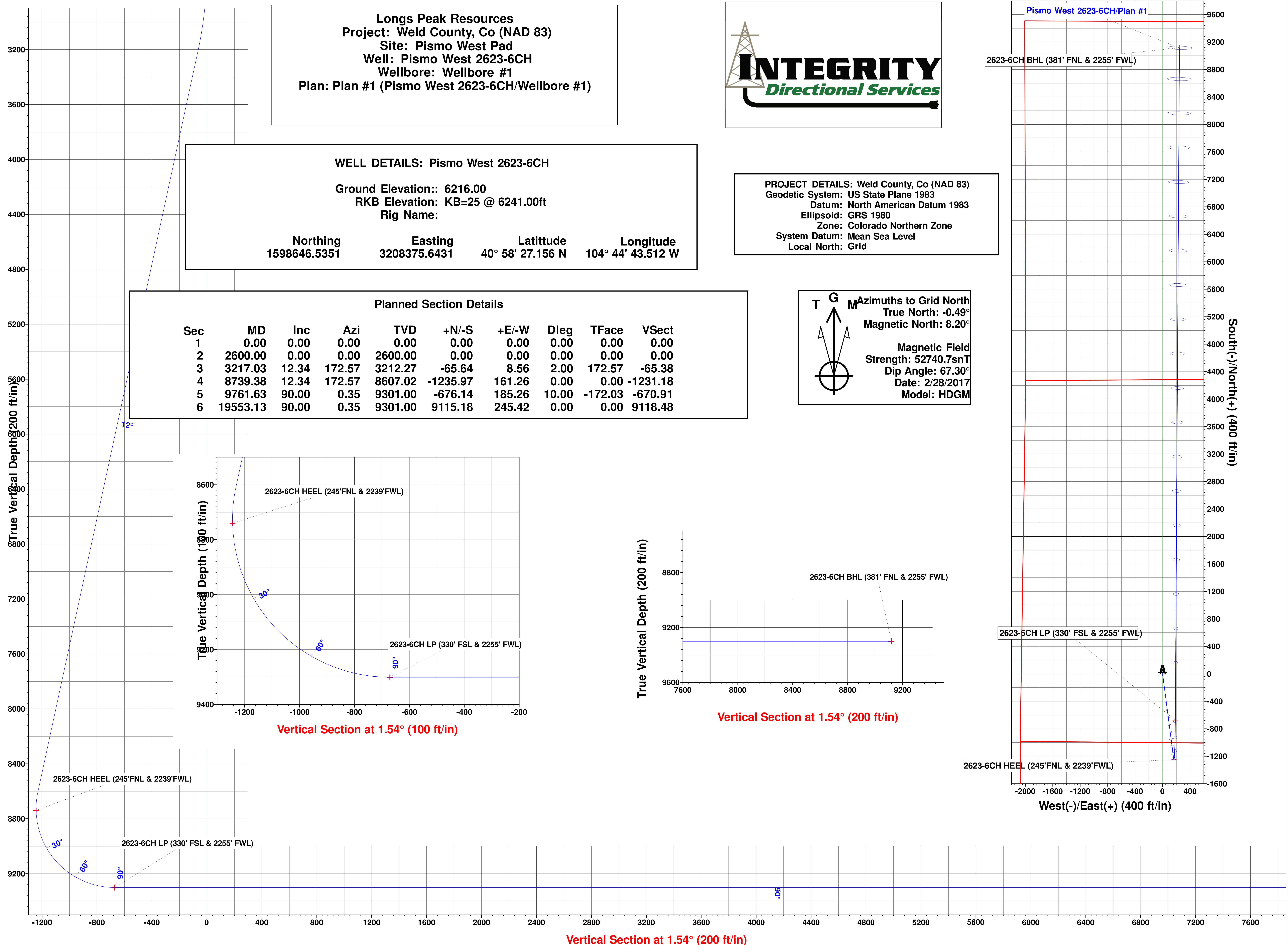
### Vertical Section at 1.54° (100 ft/in)



### Vertical Section at 1.54° (200 ft/in)



**West(-)/East(+) (400 ft/in)**



### Vertical Section at 1.54° (200 ft/in)

# **Longs Peak Resources**

**Weld County, Co (NAD 83)**

**Pismo West Pad**

**Pismo West 2623-6CH**

**Wellbore #1**

**Plan: Plan #1**

## **Standard Survey Report**

**02 March, 2017**



# Integrity Directional Services, LLC

## Survey Report



<b>Company:</b>	Longs Peak Resources	<b>Local Co-ordinate Reference:</b>	Well Pismo West 2623-6CH
<b>Project:</b>	Weld County, Co (NAD 83)	<b>TVD Reference:</b>	KB=25 @ 6241.00ft
<b>Site:</b>	Pismo West Pad	<b>MD Reference:</b>	KB=25 @ 6241.00ft
<b>Well:</b>	Pismo West 2623-6CH	<b>North Reference:</b>	Grid
<b>Wellbore:</b>	Wellbore #1	<b>Survey Calculation Method:</b>	Minimum Curvature
<b>Design:</b>	Plan #1	<b>Database:</b>	EDM 5000.1 Multi User Db

<b>Project</b>	Weld County, Co (NAD 83)		
<b>Map System:</b>	US State Plane 1983	<b>System Datum:</b>	Mean Sea Level
<b>Geo Datum:</b>	North American Datum 1983		
<b>Map Zone:</b>	Colorado Northern Zone		

<b>Site</b>	Pismo West Pad		
<b>Site Position:</b>		<b>Northing:</b>	1,598,646.5584 usft
<b>From:</b>	Lat/Long	<b>Easting:</b>	3,208,375.6429 usft
<b>Position Uncertainty:</b>	0.00 ft	<b>Slot Radius:</b>	13-3/16 "
		<b>Latitude:</b>	40° 58' 27.156 N
		<b>Longitude:</b>	104° 44' 43.512 W
		<b>Grid Convergence:</b>	0.49 °

<b>Well</b>	Pismo West 2623-6CH		
<b>Well Position</b>	<b>+N/-S</b>	0.00 ft	<b>Northing:</b>
	<b>+E/-W</b>	0.00 ft	<b>Easting:</b>
<b>Position Uncertainty</b>	0.00 ft	<b>Wellhead Elevation:</b>	0.00 ft
		<b>Latitude:</b>	40° 58' 27.156 N
		<b>Longitude:</b>	104° 44' 43.512 W
		<b>Ground Level:</b>	6,216.00 ft

<b>Wellbore</b>	Wellbore #1		
<b>Magnetics</b>	<b>Model Name</b>	<b>Sample Date</b>	<b>Declination (°)</b>
	HDGM	2/28/2017	8.68
			<b>Dip Angle (°)</b>
			67.30
			<b>Field Strength (nT)</b>
			52,741

<b>Design</b>	Plan #1		
<b>Audit Notes:</b>			
<b>Version:</b>	<b>Phase:</b>	PLAN	<b>Tie On Depth:</b>
			0.00
<b>Vertical Section:</b>	<b>Depth From (TVD) (ft)</b>	<b>+N/-S (ft)</b>	<b>+E/-W (ft)</b>
	0.00	0.00	0.00
			<b>Direction (°)</b>
			1.54

<b>Survey Tool Program</b>	<b>Date</b> 3/2/2017		
<b>From (ft)</b>	<b>To (ft)</b>	<b>Survey (Wellbore)</b>	<b>Tool Name</b>
0.00	19,553.13	Plan #1 (Wellbore #1)	MWD
			<b>Description</b>
			MWD - Standard

<b>Planned Survey</b>									
<b>Measured Depth (ft)</b>	<b>Inclination (°)</b>	<b>Azimuth (°)</b>	<b>Vertical Depth (ft)</b>	<b>+N/-S (ft)</b>	<b>+E/-W (ft)</b>	<b>Vertical Section (ft)</b>	<b>Dogleg Rate (°/100usft)</b>	<b>Build Rate (°/100usft)</b>	<b>Turn Rate (°/100usft)</b>
0.00	0.00	0.00	0.00	0.00	0.00	0.00	0.00	0.00	0.00
100.00	0.00	0.00	100.00	0.00	0.00	0.00	0.00	0.00	0.00
200.00	0.00	0.00	200.00	0.00	0.00	0.00	0.00	0.00	0.00
300.00	0.00	0.00	300.00	0.00	0.00	0.00	0.00	0.00	0.00
400.00	0.00	0.00	400.00	0.00	0.00	0.00	0.00	0.00	0.00
500.00	0.00	0.00	500.00	0.00	0.00	0.00	0.00	0.00	0.00
600.00	0.00	0.00	600.00	0.00	0.00	0.00	0.00	0.00	0.00
700.00	0.00	0.00	700.00	0.00	0.00	0.00	0.00	0.00	0.00
800.00	0.00	0.00	800.00	0.00	0.00	0.00	0.00	0.00	0.00
900.00	0.00	0.00	900.00	0.00	0.00	0.00	0.00	0.00	0.00

# Integrity Directional Services, LLC

## Survey Report



<b>Company:</b>	Longs Peak Resources	<b>Local Co-ordinate Reference:</b>	Well Pismo West 2623-6CH
<b>Project:</b>	Weld County, Co (NAD 83)	<b>TVD Reference:</b>	KB=25 @ 6241.00ft
<b>Site:</b>	Pismo West Pad	<b>MD Reference:</b>	KB=25 @ 6241.00ft
<b>Well:</b>	Pismo West 2623-6CH	<b>North Reference:</b>	Grid
<b>Wellbore:</b>	Wellbore #1	<b>Survey Calculation Method:</b>	Minimum Curvature
<b>Design:</b>	Plan #1	<b>Database:</b>	EDM 5000.1 Multi User Db

### Planned Survey

Measured Depth (ft)	Inclination (°)	Azimuth (°)	Vertical Depth (ft)	+N/-S (ft)	+E/-W (ft)	Vertical Section (ft)	Dogleg Rate (°/100usft)	Build Rate (°/100usft)	Turn Rate (°/100usft)
1,000.00	0.00	0.00	1,000.00	0.00	0.00	0.00	0.00	0.00	0.00
1,100.00	0.00	0.00	1,100.00	0.00	0.00	0.00	0.00	0.00	0.00
1,200.00	0.00	0.00	1,200.00	0.00	0.00	0.00	0.00	0.00	0.00
1,300.00	0.00	0.00	1,300.00	0.00	0.00	0.00	0.00	0.00	0.00
1,400.00	0.00	0.00	1,400.00	0.00	0.00	0.00	0.00	0.00	0.00
1,500.00	0.00	0.00	1,500.00	0.00	0.00	0.00	0.00	0.00	0.00
1,600.00	0.00	0.00	1,600.00	0.00	0.00	0.00	0.00	0.00	0.00
1,700.00	0.00	0.00	1,700.00	0.00	0.00	0.00	0.00	0.00	0.00
1,800.00	0.00	0.00	1,800.00	0.00	0.00	0.00	0.00	0.00	0.00
1,900.00	0.00	0.00	1,900.00	0.00	0.00	0.00	0.00	0.00	0.00
2,000.00	0.00	0.00	2,000.00	0.00	0.00	0.00	0.00	0.00	0.00
2,100.00	0.00	0.00	2,100.00	0.00	0.00	0.00	0.00	0.00	0.00
2,200.00	0.00	0.00	2,200.00	0.00	0.00	0.00	0.00	0.00	0.00
2,300.00	0.00	0.00	2,300.00	0.00	0.00	0.00	0.00	0.00	0.00
2,400.00	0.00	0.00	2,400.00	0.00	0.00	0.00	0.00	0.00	0.00
2,500.00	0.00	0.00	2,500.00	0.00	0.00	0.00	0.00	0.00	0.00
2,600.00	0.00	0.00	2,600.00	0.00	0.00	0.00	0.00	0.00	0.00
<b>Start Build 2.00</b>									
2,700.00	2.00	172.57	2,699.98	-1.73	0.23	-1.72	2.00	2.00	0.00
2,800.00	4.00	172.57	2,799.84	-6.92	0.90	-6.89	2.00	2.00	0.00
2,900.00	6.00	172.57	2,899.45	-15.56	2.03	-15.50	2.00	2.00	0.00
3,000.00	8.00	172.57	2,998.70	-27.65	3.61	-27.54	2.00	2.00	0.00
3,100.00	10.00	172.57	3,097.47	-43.16	5.63	-42.99	2.00	2.00	0.00
3,200.00	12.00	172.57	3,195.62	-62.08	8.10	-61.84	2.00	2.00	0.00
3,217.03	12.34	172.57	3,212.27	-65.64	8.56	-65.38	2.00	2.00	0.00
<b>Start 5522.35 hold at 3217.03 MD</b>									
3,300.00	12.34	172.57	3,293.32	-83.22	10.86	-82.90	0.00	0.00	0.00
3,400.00	12.34	172.57	3,391.01	-104.41	13.62	-104.01	0.00	0.00	0.00
3,500.00	12.34	172.57	3,488.70	-125.61	16.39	-125.12	0.00	0.00	0.00
3,600.00	12.34	172.57	3,586.39	-146.80	19.15	-146.23	0.00	0.00	0.00
3,700.00	12.34	172.57	3,684.08	-167.99	21.92	-167.34	0.00	0.00	0.00
3,800.00	12.34	172.57	3,781.77	-189.18	24.68	-188.45	0.00	0.00	0.00
3,900.00	12.34	172.57	3,879.46	-210.38	27.45	-209.56	0.00	0.00	0.00
4,000.00	12.34	172.57	3,977.15	-231.57	30.21	-230.67	0.00	0.00	0.00
4,100.00	12.34	172.57	4,074.84	-252.76	32.98	-251.78	0.00	0.00	0.00
4,200.00	12.34	172.57	4,172.53	-273.95	35.74	-272.89	0.00	0.00	0.00
4,300.00	12.34	172.57	4,270.22	-295.15	38.51	-294.00	0.00	0.00	0.00
4,400.00	12.34	172.57	4,367.91	-316.34	41.27	-315.11	0.00	0.00	0.00
4,500.00	12.34	172.57	4,465.60	-337.53	44.04	-336.22	0.00	0.00	0.00
4,600.00	12.34	172.57	4,563.29	-358.72	46.80	-357.33	0.00	0.00	0.00
4,700.00	12.34	172.57	4,660.98	-379.92	49.57	-378.44	0.00	0.00	0.00
4,800.00	12.34	172.57	4,758.67	-401.11	52.33	-399.56	0.00	0.00	0.00
4,900.00	12.34	172.57	4,856.35	-422.30	55.10	-420.67	0.00	0.00	0.00
5,000.00	12.34	172.57	4,954.04	-443.49	57.86	-441.78	0.00	0.00	0.00

# Integrity Directional Services, LLC

## Survey Report



<b>Company:</b>	Longs Peak Resources	<b>Local Co-ordinate Reference:</b>	Well Pismo West 2623-6CH
<b>Project:</b>	Weld County, Co (NAD 83)	<b>TVD Reference:</b>	KB=25 @ 6241.00ft
<b>Site:</b>	Pismo West Pad	<b>MD Reference:</b>	KB=25 @ 6241.00ft
<b>Well:</b>	Pismo West 2623-6CH	<b>North Reference:</b>	Grid
<b>Wellbore:</b>	Wellbore #1	<b>Survey Calculation Method:</b>	Minimum Curvature
<b>Design:</b>	Plan #1	<b>Database:</b>	EDM 5000.1 Multi User Db

### Planned Survey

Measured Depth (ft)	Inclination (°)	Azimuth (°)	Vertical Depth (ft)	+N/-S (ft)	+E/-W (ft)	Vertical Section (ft)	Dogleg Rate (°/100usft)	Build Rate (°/100usft)	Turn Rate (°/100usft)
5,100.00	12.34	172.57	5,051.73	-464.69	60.63	-462.89	0.00	0.00	0.00
5,200.00	12.34	172.57	5,149.42	-485.88	63.39	-484.00	0.00	0.00	0.00
5,300.00	12.34	172.57	5,247.11	-507.07	66.16	-505.11	0.00	0.00	0.00
5,400.00	12.34	172.57	5,344.80	-528.26	68.92	-526.22	0.00	0.00	0.00
5,500.00	12.34	172.57	5,442.49	-549.46	71.69	-547.33	0.00	0.00	0.00
5,600.00	12.34	172.57	5,540.18	-570.65	74.45	-568.44	0.00	0.00	0.00
5,700.00	12.34	172.57	5,637.87	-591.84	77.22	-589.55	0.00	0.00	0.00
5,800.00	12.34	172.57	5,735.56	-613.04	79.98	-610.66	0.00	0.00	0.00
5,900.00	12.34	172.57	5,833.25	-634.23	82.75	-631.77	0.00	0.00	0.00
6,000.00	12.34	172.57	5,930.94	-655.42	85.51	-652.88	0.00	0.00	0.00
6,100.00	12.34	172.57	6,028.63	-676.61	88.28	-673.99	0.00	0.00	0.00
6,200.00	12.34	172.57	6,126.32	-697.81	91.04	-695.10	0.00	0.00	0.00
6,300.00	12.34	172.57	6,224.01	-719.00	93.81	-716.21	0.00	0.00	0.00
6,400.00	12.34	172.57	6,321.70	-740.19	96.57	-737.32	0.00	0.00	0.00
6,500.00	12.34	172.57	6,419.39	-761.38	99.34	-758.43	0.00	0.00	0.00
6,600.00	12.34	172.57	6,517.08	-782.58	102.10	-779.54	0.00	0.00	0.00
6,700.00	12.34	172.57	6,614.76	-803.77	104.87	-800.65	0.00	0.00	0.00
6,800.00	12.34	172.57	6,712.45	-824.96	107.63	-821.77	0.00	0.00	0.00
6,900.00	12.34	172.57	6,810.14	-846.15	110.40	-842.88	0.00	0.00	0.00
7,000.00	12.34	172.57	6,907.83	-867.35	113.16	-863.99	0.00	0.00	0.00
7,100.00	12.34	172.57	7,005.52	-888.54	115.93	-885.10	0.00	0.00	0.00
7,200.00	12.34	172.57	7,103.21	-909.73	118.69	-906.21	0.00	0.00	0.00
7,300.00	12.34	172.57	7,200.90	-930.92	121.46	-927.32	0.00	0.00	0.00
7,400.00	12.34	172.57	7,298.59	-952.12	124.22	-948.43	0.00	0.00	0.00
7,500.00	12.34	172.57	7,396.28	-973.31	126.99	-969.54	0.00	0.00	0.00
7,600.00	12.34	172.57	7,493.97	-994.50	129.75	-990.65	0.00	0.00	0.00
7,700.00	12.34	172.57	7,591.66	-1,015.69	132.52	-1,011.76	0.00	0.00	0.00
7,800.00	12.34	172.57	7,689.35	-1,036.89	135.28	-1,032.87	0.00	0.00	0.00
7,900.00	12.34	172.57	7,787.04	-1,058.08	138.05	-1,053.98	0.00	0.00	0.00
8,000.00	12.34	172.57	7,884.73	-1,079.27	140.81	-1,075.09	0.00	0.00	0.00
8,100.00	12.34	172.57	7,982.42	-1,100.47	143.58	-1,096.20	0.00	0.00	0.00
8,200.00	12.34	172.57	8,080.11	-1,121.66	146.34	-1,117.31	0.00	0.00	0.00
8,300.00	12.34	172.57	8,177.80	-1,142.85	149.11	-1,138.42	0.00	0.00	0.00
8,400.00	12.34	172.57	8,275.49	-1,164.04	151.87	-1,159.53	0.00	0.00	0.00
8,500.00	12.34	172.57	8,373.17	-1,185.24	154.64	-1,180.64	0.00	0.00	0.00
8,600.00	12.34	172.57	8,470.86	-1,206.43	157.40	-1,201.75	0.00	0.00	0.00
8,700.00	12.34	172.57	8,568.55	-1,227.62	160.17	-1,222.87	0.00	0.00	0.00
8,739.38	12.34	172.57	8,607.02	-1,235.97	161.26	-1,231.18	0.00	0.00	0.00
<b>Start DLS 10.00 TFO -172.03</b>									
8,800.00	6.39	165.01	8,666.81	-1,245.66	162.97	-1,240.82	10.00	-9.81	-12.46
8,900.00	4.20	24.18	8,766.62	-1,247.70	165.91	-1,242.79	10.00	-2.20	-140.83
9,000.00	13.94	7.21	8,865.26	-1,232.38	168.93	-1,227.38	10.00	9.74	-16.97
9,100.00	23.89	4.19	8,959.75	-1,200.15	171.93	-1,195.09	10.00	9.96	-3.02
9,200.00	33.87	2.88	9,047.20	-1,151.99	174.82	-1,146.87	10.00	9.98	-1.31



# Integrity Directional Services, LLC

## Survey Report



<b>Company:</b>	Longs Peak Resources	<b>Local Co-ordinate Reference:</b>	Well Pismo West 2623-6CH
<b>Project:</b>	Weld County, Co (NAD 83)	<b>TVD Reference:</b>	KB=25 @ 6241.00ft
<b>Site:</b>	Pismo West Pad	<b>MD Reference:</b>	KB=25 @ 6241.00ft
<b>Well:</b>	Pismo West 2623-6CH	<b>North Reference:</b>	Grid
<b>Wellbore:</b>	Wellbore #1	<b>Survey Calculation Method:</b>	Minimum Curvature
<b>Design:</b>	Plan #1	<b>Database:</b>	EDM 5000.1 Multi User Db

### Planned Survey

Measured Depth (ft)	Inclination (°)	Azimuth (°)	Vertical Depth (ft)	+N/-S (ft)	+E/-W (ft)	Vertical Section (ft)	Dogleg Rate (°/100usft)	Build Rate (°/100usft)	Turn Rate (°/100usft)
9,300.00	43.86	2.12	9,124.96	-1,089.38	177.51	-1,084.21	10.00	9.99	-0.76
9,400.00	53.86	1.59	9,190.66	-1,014.20	179.92	-1,008.99	10.00	9.99	-0.53
9,500.00	63.85	1.19	9,242.32	-928.75	181.97	-923.52	10.00	9.99	-0.41
9,600.00	73.84	0.84	9,278.36	-835.62	183.61	-830.38	10.00	9.99	-0.34
9,700.00	83.84	0.54	9,297.69	-737.65	184.79	-732.40	10.00	10.00	-0.31
9,761.63	90.00	0.35	9,301.00	-676.14	185.26	-670.91	10.00	10.00	-0.30
<b>Start 9791.50 hold at 9761.63 MD</b>									
9,800.00	90.00	0.35	9,301.00	-637.77	185.50	-632.54	0.00	0.00	0.00
9,900.00	90.00	0.35	9,301.00	-537.77	186.11	-532.56	0.00	0.00	0.00
10,000.00	90.00	0.35	9,301.00	-437.77	186.73	-432.59	0.00	0.00	0.00
10,100.00	90.00	0.35	9,301.00	-337.77	187.34	-332.61	0.00	0.00	0.00
10,200.00	90.00	0.35	9,301.00	-237.77	187.96	-232.63	0.00	0.00	0.00
10,300.00	90.00	0.35	9,301.00	-137.78	188.57	-132.65	0.00	0.00	0.00
10,400.00	90.00	0.35	9,301.00	-37.78	189.19	-32.67	0.00	0.00	0.00
10,500.00	90.00	0.35	9,301.00	62.22	189.80	67.31	0.00	0.00	0.00
10,600.00	90.00	0.35	9,301.00	162.22	190.41	167.28	0.00	0.00	0.00
10,700.00	90.00	0.35	9,301.00	262.22	191.03	267.26	0.00	0.00	0.00
10,800.00	90.00	0.35	9,301.00	362.21	191.64	367.24	0.00	0.00	0.00
10,900.00	90.00	0.35	9,301.00	462.21	192.26	467.22	0.00	0.00	0.00
11,000.00	90.00	0.35	9,301.00	562.21	192.87	567.20	0.00	0.00	0.00
11,100.00	90.00	0.35	9,301.00	662.21	193.49	667.18	0.00	0.00	0.00
11,200.00	90.00	0.35	9,301.00	762.21	194.10	767.15	0.00	0.00	0.00
11,300.00	90.00	0.35	9,301.00	862.20	194.72	867.13	0.00	0.00	0.00
11,400.00	90.00	0.35	9,301.00	962.20	195.33	967.11	0.00	0.00	0.00
11,500.00	90.00	0.35	9,301.00	1,062.20	195.94	1,067.09	0.00	0.00	0.00
11,600.00	90.00	0.35	9,301.00	1,162.20	196.56	1,167.07	0.00	0.00	0.00
11,700.00	90.00	0.35	9,301.00	1,262.20	197.17	1,267.05	0.00	0.00	0.00
11,800.00	90.00	0.35	9,301.00	1,362.20	197.79	1,367.03	0.00	0.00	0.00
11,900.00	90.00	0.35	9,301.00	1,462.19	198.40	1,467.00	0.00	0.00	0.00
12,000.00	90.00	0.35	9,301.00	1,562.19	199.02	1,566.98	0.00	0.00	0.00
12,100.00	90.00	0.35	9,301.00	1,662.19	199.63	1,666.96	0.00	0.00	0.00
12,200.00	90.00	0.35	9,301.00	1,762.19	200.24	1,766.94	0.00	0.00	0.00
12,300.00	90.00	0.35	9,301.00	1,862.19	200.86	1,866.92	0.00	0.00	0.00
12,400.00	90.00	0.35	9,301.00	1,962.18	201.47	1,966.90	0.00	0.00	0.00
12,500.00	90.00	0.35	9,301.00	2,062.18	202.09	2,066.87	0.00	0.00	0.00
12,600.00	90.00	0.35	9,301.00	2,162.18	202.70	2,166.85	0.00	0.00	0.00
12,700.00	90.00	0.35	9,301.00	2,262.18	203.32	2,266.83	0.00	0.00	0.00
12,800.00	90.00	0.35	9,301.00	2,362.18	203.93	2,366.81	0.00	0.00	0.00
12,900.00	90.00	0.35	9,301.00	2,462.17	204.55	2,466.79	0.00	0.00	0.00
13,000.00	90.00	0.35	9,301.00	2,562.17	205.16	2,566.77	0.00	0.00	0.00
13,100.00	90.00	0.35	9,301.00	2,662.17	205.77	2,666.74	0.00	0.00	0.00
13,200.00	90.00	0.35	9,301.00	2,762.17	206.39	2,766.72	0.00	0.00	0.00
13,300.00	90.00	0.35	9,301.00	2,862.17	207.00	2,866.70	0.00	0.00	0.00

# Integrity Directional Services, LLC

## Survey Report



<b>Company:</b>	Longs Peak Resources	<b>Local Co-ordinate Reference:</b>	Well Pismo West 2623-6CH
<b>Project:</b>	Weld County, Co (NAD 83)	<b>TVD Reference:</b>	KB=25 @ 6241.00ft
<b>Site:</b>	Pismo West Pad	<b>MD Reference:</b>	KB=25 @ 6241.00ft
<b>Well:</b>	Pismo West 2623-6CH	<b>North Reference:</b>	Grid
<b>Wellbore:</b>	Wellbore #1	<b>Survey Calculation Method:</b>	Minimum Curvature
<b>Design:</b>	Plan #1	<b>Database:</b>	EDM 5000.1 Multi User Db

### Planned Survey

Measured Depth (ft)	Inclination (°)	Azimuth (°)	Vertical Depth (ft)	+N/-S (ft)	+E/-W (ft)	Vertical Section (ft)	Dogleg Rate (°/100usft)	Build Rate (°/100usft)	Turn Rate (°/100usft)
13,400.00	90.00	0.35	9,301.00	2,962.17	207.62	2,966.68	0.00	0.00	0.00
13,500.00	90.00	0.35	9,301.00	3,062.16	208.23	3,066.66	0.00	0.00	0.00
13,600.00	90.00	0.35	9,301.00	3,162.16	208.85	3,166.64	0.00	0.00	0.00
13,700.00	90.00	0.35	9,301.00	3,262.16	209.46	3,266.62	0.00	0.00	0.00
13,800.00	90.00	0.35	9,301.00	3,362.16	210.07	3,366.59	0.00	0.00	0.00
13,900.00	90.00	0.35	9,301.00	3,462.16	210.69	3,466.57	0.00	0.00	0.00
14,000.00	90.00	0.35	9,301.00	3,562.15	211.30	3,566.55	0.00	0.00	0.00
14,100.00	90.00	0.35	9,301.00	3,662.15	211.92	3,666.53	0.00	0.00	0.00
14,200.00	90.00	0.35	9,301.00	3,762.15	212.53	3,766.51	0.00	0.00	0.00
14,300.00	90.00	0.35	9,301.00	3,862.15	213.15	3,866.49	0.00	0.00	0.00
14,400.00	90.00	0.35	9,301.00	3,962.15	213.76	3,966.46	0.00	0.00	0.00
14,500.00	90.00	0.35	9,301.00	4,062.14	214.38	4,066.44	0.00	0.00	0.00
14,600.00	90.00	0.35	9,301.00	4,162.14	214.99	4,166.42	0.00	0.00	0.00
14,700.00	90.00	0.35	9,301.00	4,262.14	215.60	4,266.40	0.00	0.00	0.00
14,800.00	90.00	0.35	9,301.00	4,362.14	216.22	4,366.38	0.00	0.00	0.00
14,900.00	90.00	0.35	9,301.00	4,462.14	216.83	4,466.36	0.00	0.00	0.00
15,000.00	90.00	0.35	9,301.00	4,562.14	217.45	4,566.33	0.00	0.00	0.00
15,100.00	90.00	0.35	9,301.00	4,662.13	218.06	4,666.31	0.00	0.00	0.00
15,200.00	90.00	0.35	9,301.00	4,762.13	218.68	4,766.29	0.00	0.00	0.00
15,300.00	90.00	0.35	9,301.00	4,862.13	219.29	4,866.27	0.00	0.00	0.00
15,400.00	90.00	0.35	9,301.00	4,962.13	219.91	4,966.25	0.00	0.00	0.00
15,500.00	90.00	0.35	9,301.00	5,062.13	220.52	5,066.23	0.00	0.00	0.00
15,600.00	90.00	0.35	9,301.00	5,162.12	221.13	5,166.21	0.00	0.00	0.00
15,700.00	90.00	0.35	9,301.00	5,262.12	221.75	5,266.18	0.00	0.00	0.00
15,800.00	90.00	0.35	9,301.00	5,362.12	222.36	5,366.16	0.00	0.00	0.00
15,900.00	90.00	0.35	9,301.00	5,462.12	222.98	5,466.14	0.00	0.00	0.00
16,000.00	90.00	0.35	9,301.00	5,562.12	223.59	5,566.12	0.00	0.00	0.00
16,100.00	90.00	0.35	9,301.00	5,662.11	224.21	5,666.10	0.00	0.00	0.00
16,200.00	90.00	0.35	9,301.00	5,762.11	224.82	5,766.08	0.00	0.00	0.00
16,300.00	90.00	0.35	9,301.00	5,862.11	225.43	5,866.05	0.00	0.00	0.00
16,400.00	90.00	0.35	9,301.00	5,962.11	226.05	5,966.03	0.00	0.00	0.00
16,500.00	90.00	0.35	9,301.00	6,062.11	226.66	6,066.01	0.00	0.00	0.00
16,600.00	90.00	0.35	9,301.00	6,162.10	227.28	6,165.99	0.00	0.00	0.00
16,700.00	90.00	0.35	9,301.00	6,262.10	227.89	6,265.97	0.00	0.00	0.00
16,800.00	90.00	0.35	9,301.00	6,362.10	228.51	6,365.95	0.00	0.00	0.00
16,900.00	90.00	0.35	9,301.00	6,462.10	229.12	6,465.93	0.00	0.00	0.00
17,000.00	90.00	0.35	9,301.00	6,562.10	229.74	6,565.90	0.00	0.00	0.00
17,100.00	90.00	0.35	9,301.00	6,662.10	230.35	6,665.88	0.00	0.00	0.00
17,200.00	90.00	0.35	9,301.00	6,762.09	230.96	6,765.86	0.00	0.00	0.00
17,300.00	90.00	0.35	9,301.00	6,862.09	231.58	6,865.84	0.00	0.00	0.00
17,400.00	90.00	0.35	9,301.00	6,962.09	232.19	6,965.82	0.00	0.00	0.00
17,500.00	90.00	0.35	9,301.00	7,062.09	232.81	7,065.80	0.00	0.00	0.00
17,600.00	90.00	0.35	9,301.00	7,162.09	233.42	7,165.77	0.00	0.00	0.00

# Integrity Directional Services, LLC

## Survey Report



<b>Company:</b>	Longs Peak Resources	<b>Local Co-ordinate Reference:</b>	Well Pismo West 2623-6CH
<b>Project:</b>	Weld County, Co (NAD 83)	<b>TVD Reference:</b>	KB=25 @ 6241.00ft
<b>Site:</b>	Pismo West Pad	<b>MD Reference:</b>	KB=25 @ 6241.00ft
<b>Well:</b>	Pismo West 2623-6CH	<b>North Reference:</b>	Grid
<b>Wellbore:</b>	Wellbore #1	<b>Survey Calculation Method:</b>	Minimum Curvature
<b>Design:</b>	Plan #1	<b>Database:</b>	EDM 5000.1 Multi User Db

### Planned Survey

Measured Depth (ft)	Inclination (°)	Azimuth (°)	Vertical Depth (ft)	+N/-S (ft)	+E/-W (ft)	Vertical Section (ft)	Dogleg Rate (°/100usft)	Build Rate (°/100usft)	Turn Rate (°/100usft)
17,700.00	90.00	0.35	9,301.00	7,262.08	234.04	7,265.75	0.00	0.00	0.00
17,800.00	90.00	0.35	9,301.00	7,362.08	234.65	7,365.73	0.00	0.00	0.00
17,900.00	90.00	0.35	9,301.00	7,462.08	235.26	7,465.71	0.00	0.00	0.00
18,000.00	90.00	0.35	9,301.00	7,562.08	235.88	7,565.69	0.00	0.00	0.00
18,100.00	90.00	0.35	9,301.00	7,662.08	236.49	7,665.67	0.00	0.00	0.00
18,200.00	90.00	0.35	9,301.00	7,762.07	237.11	7,765.64	0.00	0.00	0.00
18,300.00	90.00	0.35	9,301.00	7,862.07	237.72	7,865.62	0.00	0.00	0.00
18,400.00	90.00	0.35	9,301.00	7,962.07	238.34	7,965.60	0.00	0.00	0.00
18,500.00	90.00	0.35	9,301.00	8,062.07	238.95	8,065.58	0.00	0.00	0.00
18,600.00	90.00	0.35	9,301.00	8,162.07	239.57	8,165.56	0.00	0.00	0.00
18,700.00	90.00	0.35	9,301.00	8,262.07	240.18	8,265.54	0.00	0.00	0.00
18,800.00	90.00	0.35	9,301.00	8,362.06	240.79	8,365.52	0.00	0.00	0.00
18,900.00	90.00	0.35	9,301.00	8,462.06	241.41	8,465.49	0.00	0.00	0.00
19,000.00	90.00	0.35	9,301.00	8,562.06	242.02	8,565.47	0.00	0.00	0.00
19,100.00	90.00	0.35	9,301.00	8,662.06	242.64	8,665.45	0.00	0.00	0.00
19,200.00	90.00	0.35	9,301.00	8,762.06	243.25	8,765.43	0.00	0.00	0.00
19,300.00	90.00	0.35	9,301.00	8,862.05	243.87	8,865.41	0.00	0.00	0.00
19,400.00	90.00	0.35	9,301.00	8,962.05	244.48	8,965.39	0.00	0.00	0.00
19,500.00	90.00	0.35	9,301.00	9,062.05	245.09	9,065.36	0.00	0.00	0.00
19,553.13	90.00	0.35	9,301.00	9,115.18	245.42	9,118.48	0.00	0.00	0.00
TD at 19553.13									

### Design Targets

Target Name	Dip Angle (°)	Dip Dir. (°)	TVD (ft)	+N/-S (ft)	+E/-W (ft)	Northing (usft)	Easting (usft)	Latitude	Longitude
2623-6CH HEEL (245°) - hit/miss target - Shape	0.00	0.00	8,740.14	-1,248.86	165.12	1,597,397.677 6	3,208,540.765 6	40° 58' 14.803 N	104° 44' 41.498 W
- plan misses target center by 0.02ft at 8873.51ft MD (8740.16 TVD, -1248.86 N, 165.12 E)									
- Point									
2623-6CH LP (330° F) - plan hits target center - Point	0.00	0.00	9,301.00	-676.14	185.26	1,597,970.399 8	3,208,560.906 5	40° 58' 20.460 N	104° 44' 41.172 W
2623-6CH BHL (381° I) - plan hits target center - Point	0.00	0.00	9,301.00	9,115.18	245.42	1,607,761.694 0	3,208,621.063 9	40° 59' 57.192 N	104° 44' 39.300 W



# Integrity Directional Services, LLC

## Survey Report



<b>Company:</b>	Longs Peak Resources	<b>Local Co-ordinate Reference:</b>	Well Pismo West 2623-6CH
<b>Project:</b>	Weld County, Co (NAD 83)	<b>TVD Reference:</b>	KB=25 @ 6241.00ft
<b>Site:</b>	Pismo West Pad	<b>MD Reference:</b>	KB=25 @ 6241.00ft
<b>Well:</b>	Pismo West 2623-6CH	<b>North Reference:</b>	Grid
<b>Wellbore:</b>	Wellbore #1	<b>Survey Calculation Method:</b>	Minimum Curvature
<b>Design:</b>	Plan #1	<b>Database:</b>	EDM 5000.1 Multi User Db

### Plan Annotations

Measured Depth (ft)	Vertical Depth (ft)	Local Coordinates		Comment
		+N/-S (ft)	+E/-W (ft)	
2600	2600	0	0	Start Build 2.00
3217	3212	-66	9	Start 5522.35 hold at 3217.03 MD
8739	8607	-1236	161	Start DLS 10.00 TFO -172.03
9762	9301	-676	185	Start 9791.50 hold at 9761.63 MD
19,553	9301	9115	245	TD at 19553.13

Checked By: \_\_\_\_\_ Approved By: \_\_\_\_\_ Date: \_\_\_\_\_