

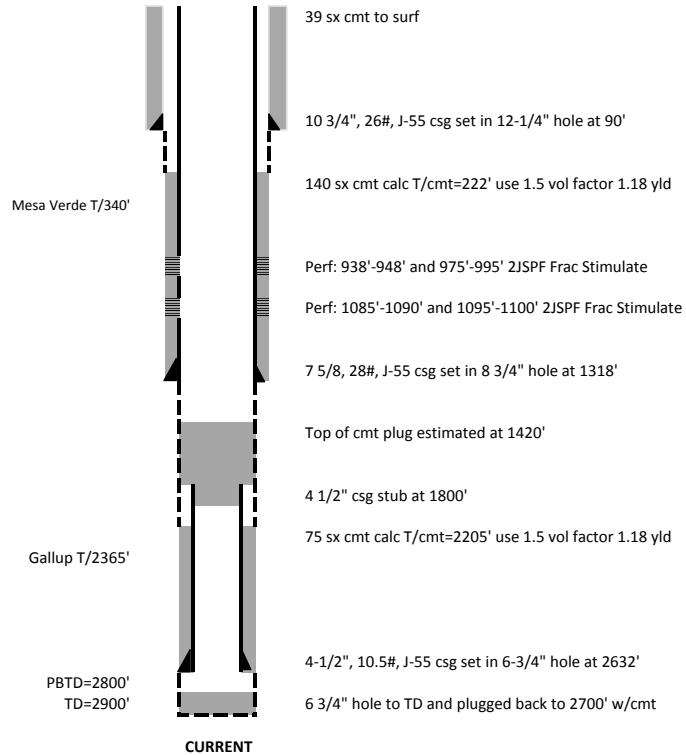
TRASK, CONCEPT AND ASSOCIATES - OP #89205

API No. 067-06020

Wheeler #2

NWSW 5 33N 11W

La Plata County, CO



Cut casings off 3' below grade
Plug #3: 24 sx at surface
Install PA plate 3' below grade c/w weep hole for venting

Plug #2 : Perf: 200' 4 JSPF cmt to surf w/120 sx cmt

Plug #1: CIBP or CIGR 900' w/25 sx cmt on top

Mesa Verde T/340'

Gallup T/2365'

PBTD=2800'
TD=2900'

