

1801 Broadway
Suite 500
Denver, Colorado 80202



Allison Schieber
Regulatory Technician
Tel: 303.398.0355
E-mail: aschieber@gwogco.com

February 28, 2017

Colorado Oil and Gas Conservation Commission
1120 Lincoln Street, Suite 801
Denver, Colorado 80203

RE: **Proposed Wellbore Spacing Unit**
Schnieder HD 11-382HNX
Niobrara New Drill

SWSW Section 7
Township 4N, Range 66W, 6th P.M.
Weld County, Colorado

Dear Director:

Great Western Operating Company, LLC is planning to drill the above captioned well in accordance with the provisions of COGCC Rule 318A.e.
Great Western proposed wellbore spacing unit consists of:

- **Sec 11: S2S2**
- **Sec 12: S2S2**
- **Sec 13: N2N2**
- **Sec 14: N2N2**
- **640 Acres**

The 30 day notification time period has passed and we have not received any objections to such well locations or proposed spacing unit, therefore Great Western hereby requests the Director to approve the above mentioned well. Great Western Operating Company, LLC respectfully requests that the COGCC review the enclosed map illustrating the proposed wellbore spacing unit.

Respectfully,

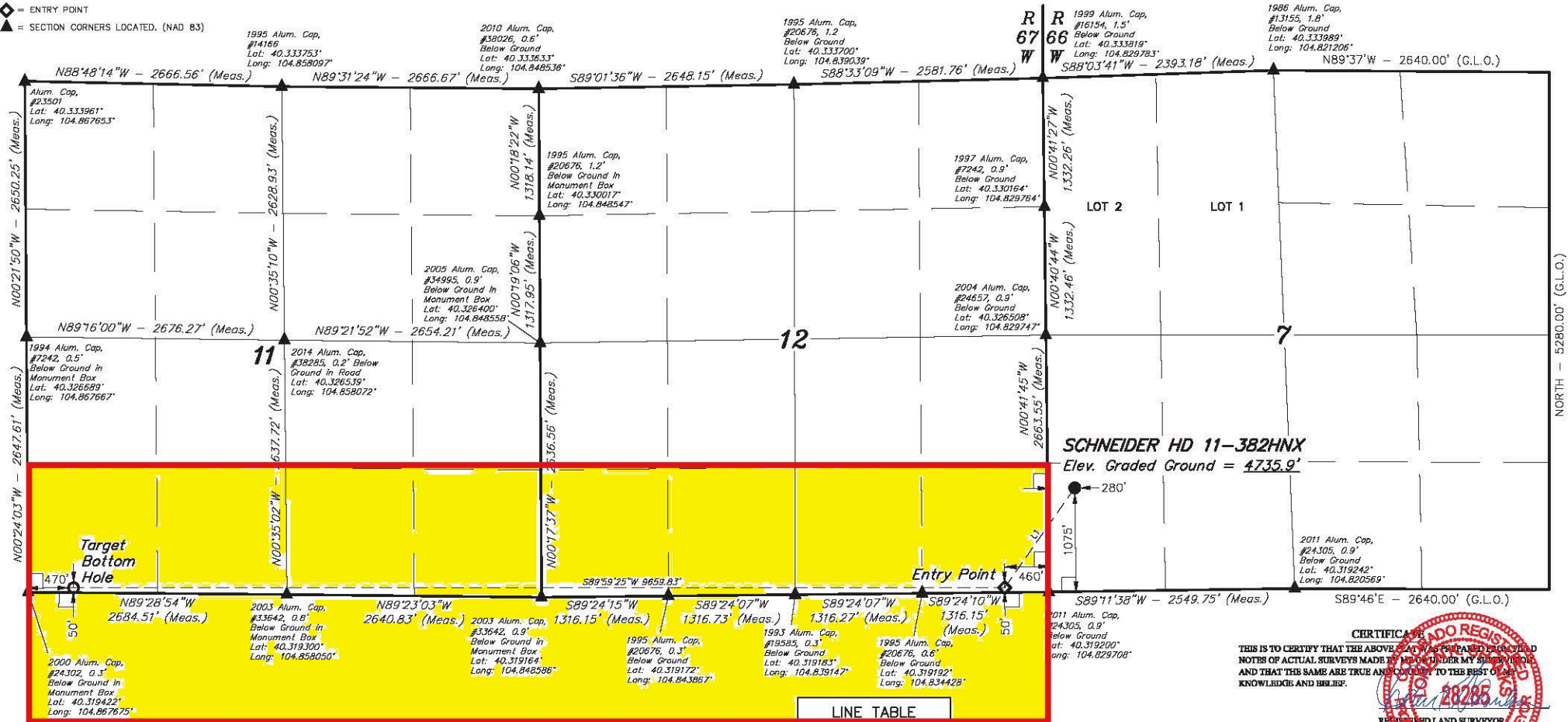
Allison Schieber

Allison Schieber
Regulatory Technician
Great Western Operating Company, LLC

LEGEND:

- = 90° SYMBOL
- = PROPOSED WELLHEAD.
- = TARGET BOTTOM HOLE.
- ◆ = ENTRY POINT
- ▲ = SECTION CORNERS LOCATED. (NAD 83)

T4N, R66W, 6th P.M.



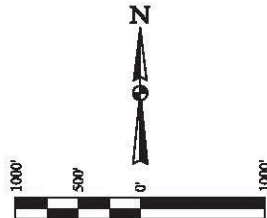
LINE TABLE		
LINE	DIRECTION	LENGTH
L1	S35°07'54"W	1264.15'

BASIS OF BEARINGS

BASIS OF BEARINGS IS A G.P.S. OBSERVATION

BASIS OF ELEVATION

USGS COOPERATIVE BASE NETWORK CONTROL STATION, DESIGNATION "VERMILYRA". NGS DATA SHEET LISTS THE NAVD 88 ELEVATION AS BEING 5026 FEET.



UELS, LLC
Corporate Office • 85 South 200 East
Vernal, UT 84078 • (435) 789-1017

NAD 83 (SURFACE LOCATION)	NAD 83 (ENTRY POINT)	NAD 83 (TARGET BOTTOM HOLE)
LATITUDE = 40°19'19.75" (40.322153)	LATITUDE = 40°19'09.60" (40.319333)	LATITUDE = 40°19'10.34" (40.319339)
LONGITUDE = 104°49'43.39" (104.828719)	LONGITUDE = 104°49'52.89" (104.831358)	LONGITUDE = 104°51'57.56" (104.865989)
NAD 27 (SURFACE LOCATION)	NAD 27 (ENTRY POINT)	NAD 27 (TARGET BOTTOM HOLE)
LATITUDE = 40°19'19.82" (40.322172)	LATITUDE = 40°19'09.66" (40.319350)	LATITUDE = 40°19'10.40" (40.319356)
LONGITUDE = 104°49'41.30" (104.828194)	LONGITUDE = 104°49'50.99" (104.830831)	LONGITUDE = 104°51'55.66" (104.865461)

PDOP = 1.3

GREAT WESTERN OPERATING COMPANY

SCHNEIDER HD 11-382HNX
SW 1/4 SW 1/4, SECTION 7, T4N, R66W, 6th P.M.
WELD COUNTY, COLORADO

SURVEYED BY	CHAD MEIERS, D.N.	11-10-16	SCALE
DRAWN BY	K.B.	11-16-16	1" = 1000'

WELL LOCATION PLAT



CERTIFICATE
THIS IS TO CERTIFY THAT THE ABOVE PLAT WAS PREPARED IN ACCORDANCE WITH THE NOTES OF ACTUAL SURVEYS MADE BY ME OR UNDER MY SUPERVISION, AND THAT THE SAME ARE TRUE AND CORRECT TO THE BEST OF MY KNOWLEDGE AND BELIEF.

REV: 1 12-16-16 C.C. (BHL & NAME CHANGE)