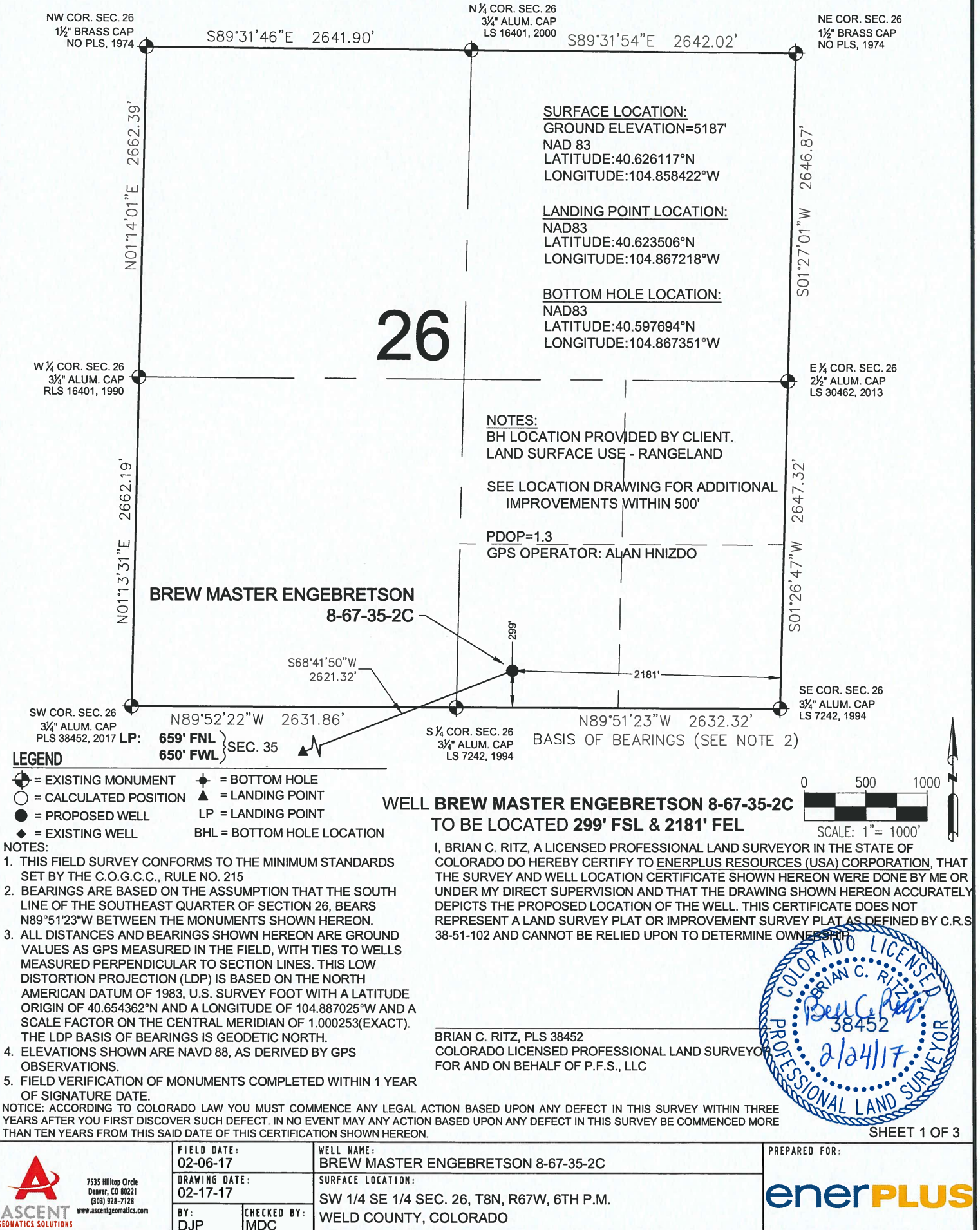
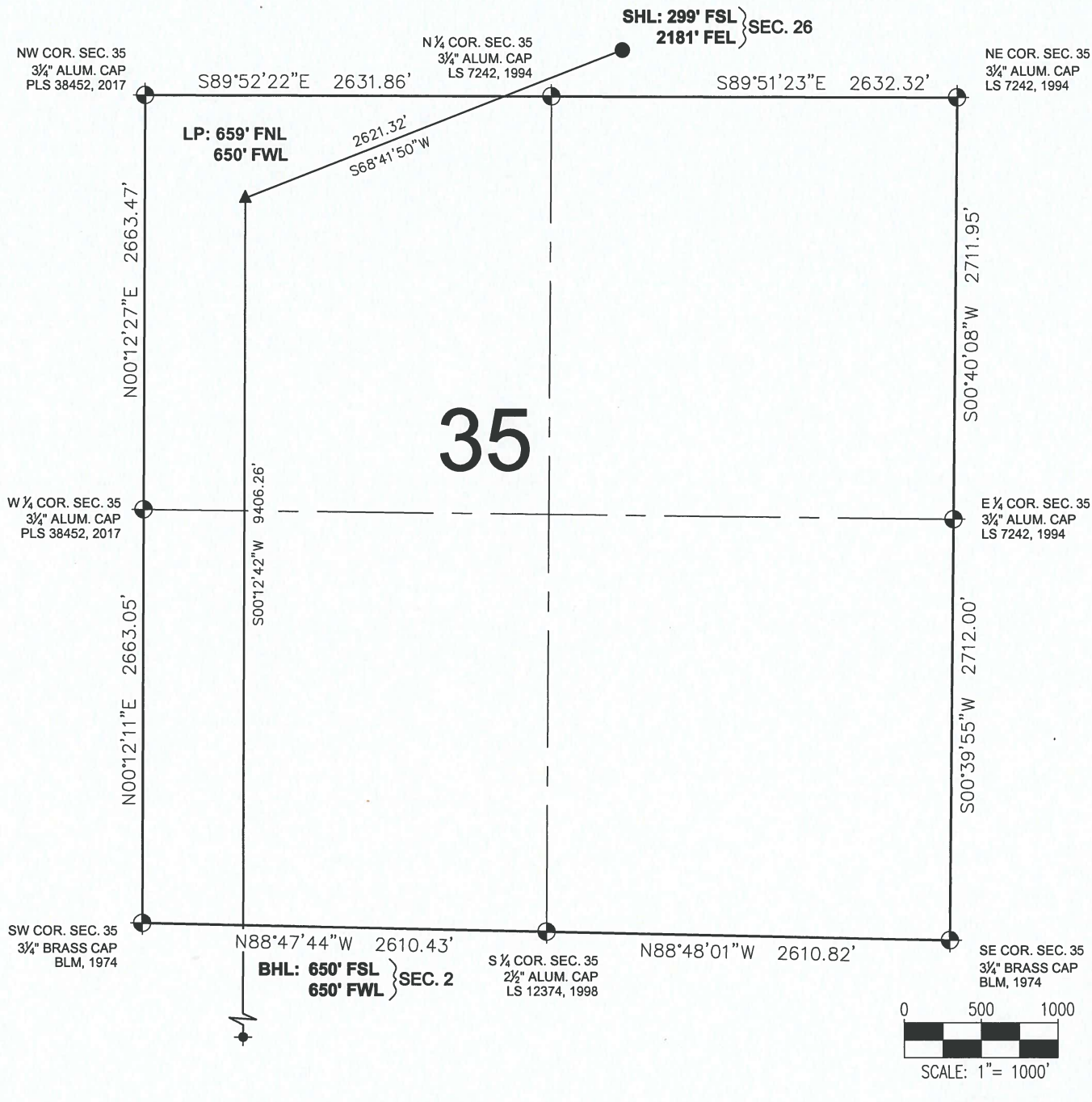


BREW MASTER ENGBRETSON 8-67-35-2C WELL LOCATION CERTIFICATE



BREW MASTER ENGBRETSON 8-67-35-2C WELL LOCATION CERTIFICATE



LEGEND

- ⊙ = EXISTING MONUMENT
- = CALCULATED POSITION
- = PROPOSED WELL
- ◆ = EXISTING WELL
- ⬮ = BOTTOM HOLE
- ▲ = LANDING POINT
- LP = LANDING POINT
- BHL = BOTTOM HOLE LOCATION

BRIAN C. RITZ, PLS 38452
COLORADO LICENSED PROFESSIONAL LAND SURVEYOR
FOR AND ON BEHALF OF P.F.S., LLC



SHEET 2 OF 3

FIELD DATE:
02-06-17

DRAWING DATE:
02-17-17

BY:
DJP

CHECKED BY:
MDC

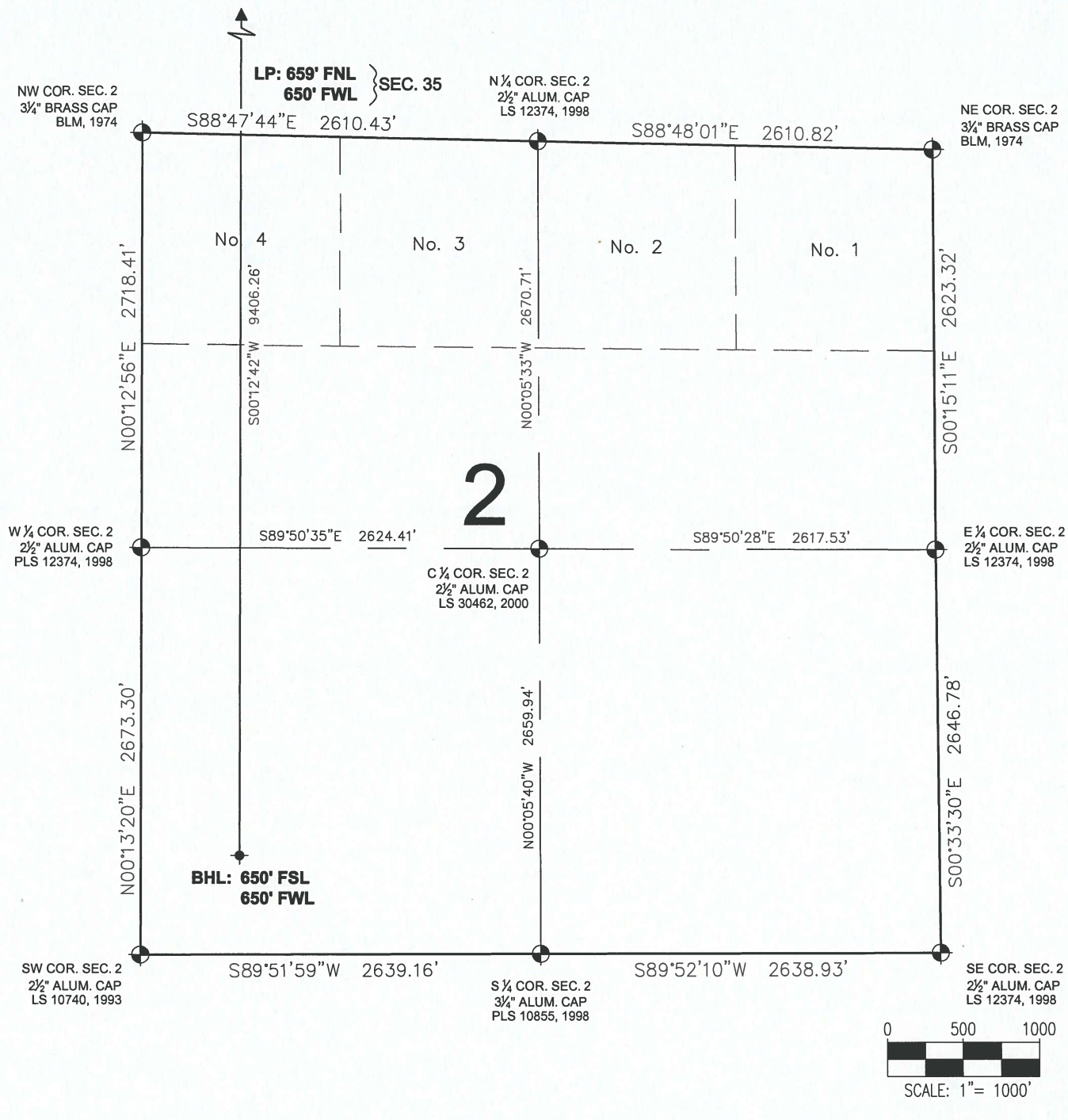
WELL NAME:
BREW MASTER ENGBRETSON 8-67-35-2C

SURFACE LOCATION:
SW 1/4 SE 1/4 SEC. 26, T8N, R67W, 6TH P.M.
WELD COUNTY, COLORADO

PREPARED FOR:

enerPLUS

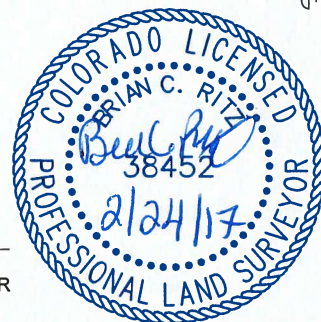
BREW MASTER ENGBRETSON 8-67-35-2C WELL LOCATION CERTIFICATE



LEGEND

- ⊕ = EXISTING MONUMENT ◆ = BOTTOM HOLE
- = CALCULATED POSITION ▲ = LANDING POINT
- = PROPOSED WELL LP = LANDING POINT
- ◆ = EXISTING WELL BHL = BOTTOM HOLE LOCATION

BRIAN C. RITZ, PLS 38452
COLORADO LICENSED PROFESSIONAL LAND SURVEYOR
FOR AND ON BEHALF OF P.F.S., LLC



SHEET 3 OF 3