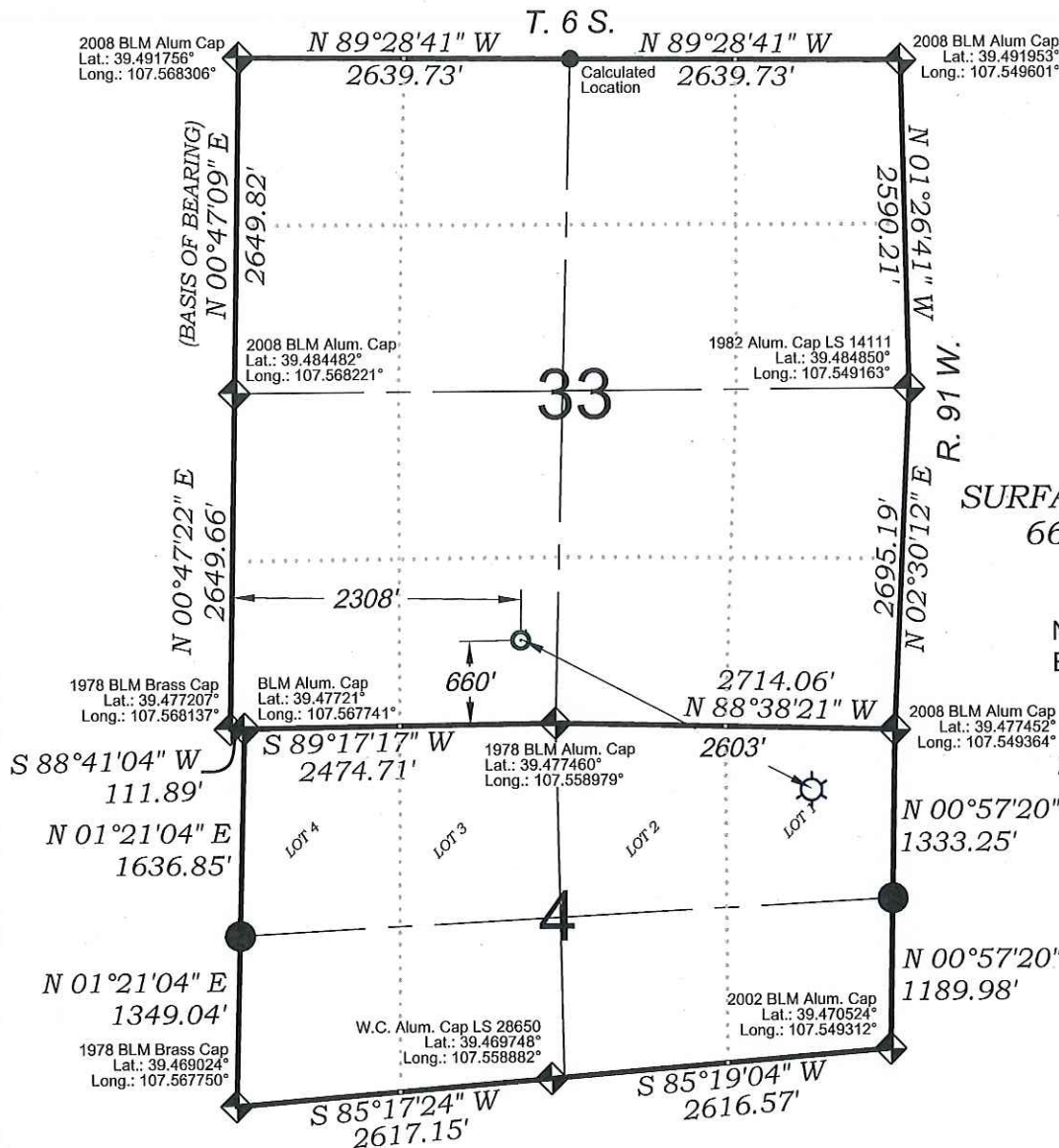


CSF 41C-4-791



SURFACE HOLE LOCATION

660 FSL, 2308 FWL

Lat.: 39.479245°

Long.: -107.559985°

N.: 1606036.2 (COSP)

E.: 2418582.6 (COSP)

BOTTOM HOLE LOCATION

489 FNL, 662 FEL

Lat.: 39.476111°

Long.: -107.551698

N.: 1604842.1 (COSP)

E.: 2420895.5 (COSP)

EXISTING GROUND ELEV.: 6539.8
 PROPOSED PAD ELEV.: 6540.4

SEE CONSTRUCTION LAYOUT PLAT
 FOR VISIBLE IMPROVEMENTS
 WITHIN 500' OF THIS LOCATION

SURVEYORS STATEMENT

I, MICHAEL J. LANGHORNE, A REGISTERED LAND SURVEYOR IN THE STATE OF COLORADO DO HEREBY CERTIFY THAT THE SURVEY SHOWN HEREON WAS PREPARED UNDER MY DIRECT SUPERVISION AND HAS BEEN STAKED ON THE GROUND AS SHOWN ON THE PLAT AND CHECKING THAT THIS MAP IS A TRUE REPRESENTATION THEREOF.

Michael J. Langhorne

MICHAEL J. LANGHORNE, COLORADO REGISTRATION NO. 36572
 FOR AND ON BEHALF OF
 BOOKCLIFF SURVEY SERVICES, INC.

REFERENCES

- 1) Corrective Dependent Resurvey T. 6 S., R. 91 W., 6th P.M (BLM PLAT)
- 2) Dependent Resurvey T. 7 S., R. 91 W., 6th P.M (BLM PLAT)
- 3) U.S.G.S. QUAD: Gibson Gulch, CO

REVISED: 2/15/17

136 East Third Street
 Rifle, Colorado
 81650 Ph. (970)
 625-2720 Fax (970)
 625-2773



BOOKCLIFF
 Survey Services, Inc.

SURVEY DATE: 11/11/16
 MAP DATE: 11/18/16
 SCALE: 1" = 1500'
 PLAT: 1 of 10
 PROJECT: VG

- LEGEND -

FIELD LOCATED SECTION
 MONUMENTS AS DESCRIBED



FIELD SURVEYED
 WELL LOCATION



CALCULATED BOTTOM
 HOLE LOCATION



CALCULATED SECTION
 CORNER LOCATION



NOTES

- 1) ELEVATIONS BASED ON N.A.V.D. 1988 PUBLISHED COORDINATES.
- 2) LATITUDES AND LONGITUDES ARE BASE ON NAD 83, PUBLISHED COORDINATES
- 3) STATE PLANE COORDINATES ARE BASED ON COLORADO CENTRAL ZONE, U.S. SURVEY FEET.
- 4) ELEVATION MASK SET TO 15"
- 5) GPS OPERATOR J. KIRKPATRICK, OBSERVED A PDOP 1.8 ON SURVEY POINT NUMBER 251.
- 6) SURFACE AND BOTTOM HOLE LOCATIONS ARE MEASURED 90° FROM SECTION LINES.

WELL LOCATION PLAT Prepared for:



VANGUARD
 OPERATING, LLC

Vanguard Operating, LLC

SE1/4 SW1/4, SECTION 33
 T. 6 S., R. 91 W. of the 6th. P.M.
 GARFIELD COUNTY, COLORADO