

US ROCKIES WATTENBERG PLANNING

**WELD-NAD83-UTMFT13N
2N-65W-13 Swartz 16-13HZ Pad
SWARTZ 26C-12HZ**

Plan B

Plan: Permit Rev-1

Standard Planning Report

08 December, 2016

Project: WELD-NAD83-UTMFT13N
Site: 2N-65W-13 Swartz 16-13HZ Pad
Well: SWARTZ 26C-12HZ
Wellbore: Plan B
Design: Permit Rev-1

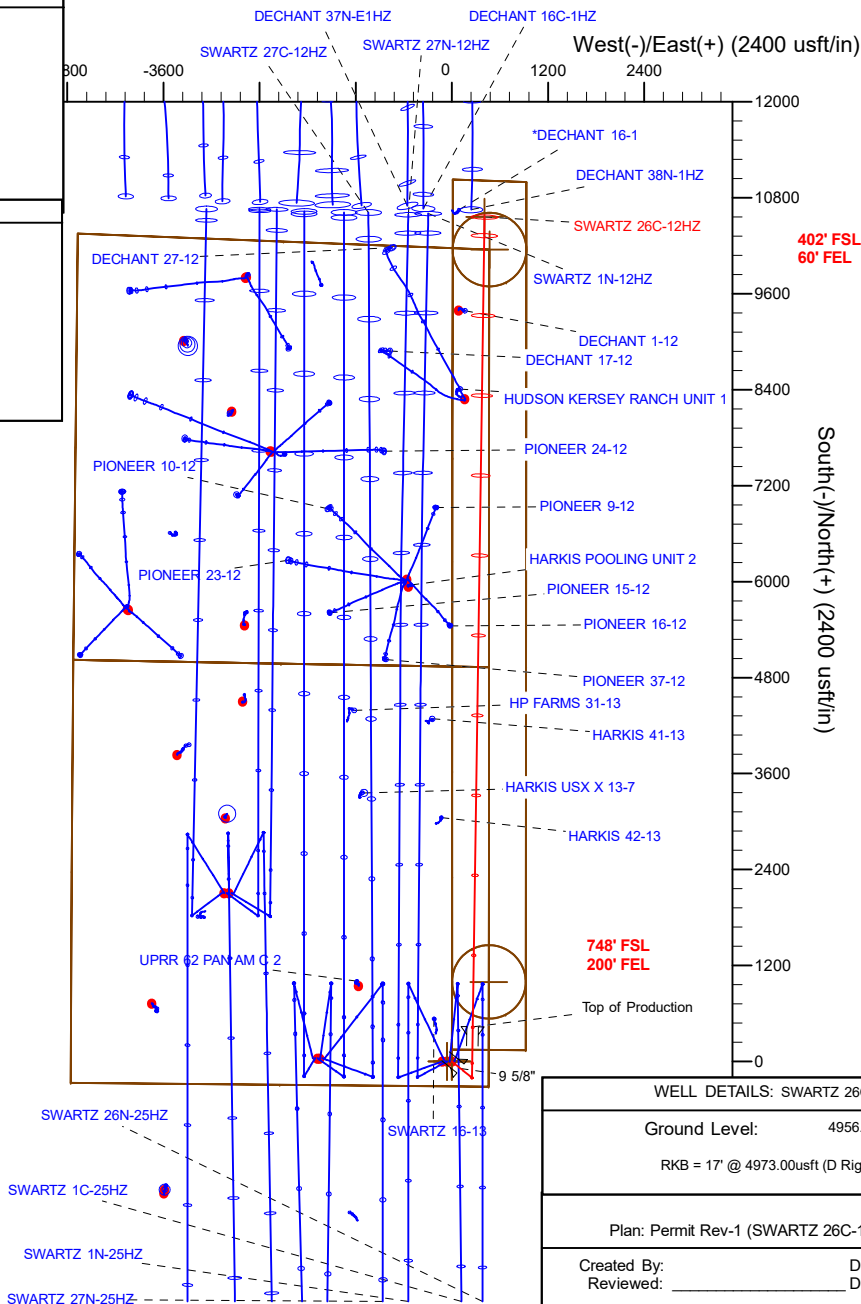
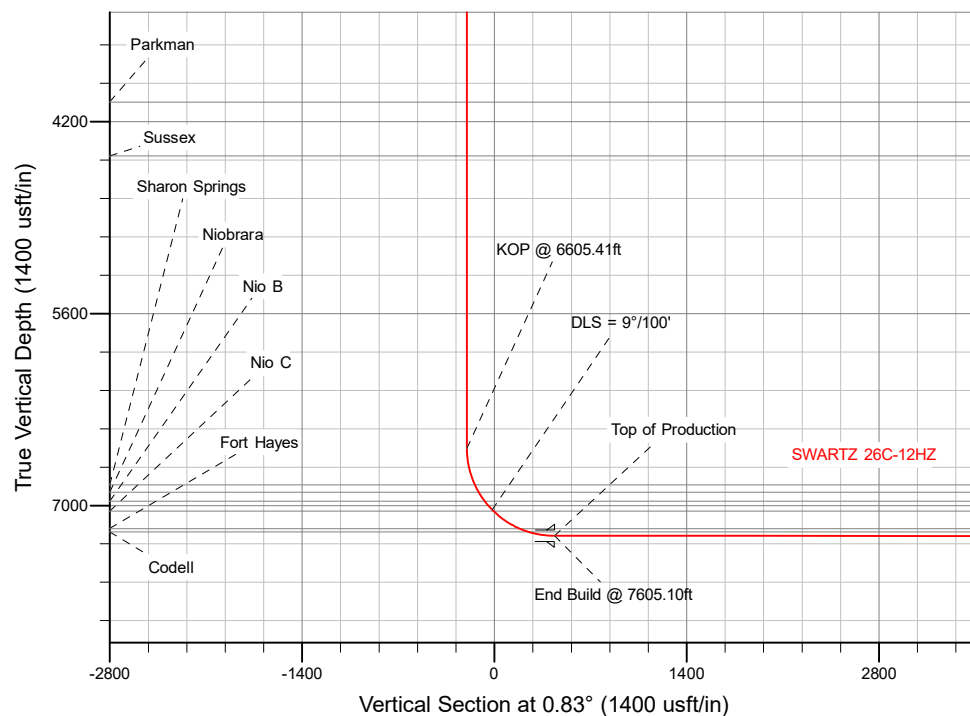
US ROCKIES WATTENBERG PLANNING

SECTION DETAILS

Sec	MD	Inc	Azi	TVD	+N/-S	+E/-W	Dleg	TFace	Vsect	Target
1	0.00	0.00	0.00	0.00	0.00	0.00	0.00	0.00	0.00	
2	250.00	0.00	0.00	250.00	0.00	0.00	0.00	0.00	0.00	
3	783.33	8.00	129.00	781.60	-23.39	28.89	1.50	129.00	-22.97	
4	2633.33	8.00	129.00	2613.60	-185.43	228.98	0.00	0.00	-182.09	
5	3033.33	0.00	0.00	3012.30	-202.97	250.65	2.00	180.00	-199.32	
6	6605.41	0.00	0.00	6584.38	-202.97	250.65	0.00	0.00	-199.32	
7	7605.10	89.97	0.83	7221.00	433.27	259.90	9.00	0.83	436.99	
8	17733.56	89.97	0.83	7226.00	10560.65	407.19	0.00	0.00	10565.44	SWARTZ 26C-12HZ_BHL

WELLBORE TARGET DETAILS (LAT/LONG)

Name	TVD	+N/-S	+E/-W	Latitude	Longitude	Shape
SWARTZ 26C-12HZ_SHL	0.00	0.00	0.00	40.131976	-104.604581	Point
SWARTZ 26C-12HZ_BHL	7226.00	10560.65	407.19	40.160976	-104.603124	Point



WELL DETAILS: SWARTZ 26C-12HZ

Ground Level: 4956.00

RKB = 17' @ 4973.00usft (D Rig)

Plan: Permit Rev-1 (SWARTZ 26C-12HZ/Plan B)

Created By: _____ Date: 12/08/2016
Reviewed: _____ Date: _____

Corporate Planning Report

Database:	PLANNING	Local Co-ordinate Reference:	Well SWARTZ 26C-12HZ
Company:	US ROCKIES WATTENBERG PLANNING	TVD Reference:	RKB = 17' @ 4973.00usft (D Rig)
Project:	WELD-NAD83-UTMFT13N	MD Reference:	RKB = 17' @ 4973.00usft (D Rig)
Site:	2N-65W-13 Swartz 16-13HZ Pad	North Reference:	True
Well:	SWARTZ 26C-12HZ	Survey Calculation Method:	Minimum Curvature
Wellbore:	Plan B		
Design:	Permit Rev-1		

Project	WELD-NAD83-UTMFT13N		
Map System:	Universal Transverse Mercator (US Survey Feet)	System Datum:	Mean Sea Level
Geo Datum:	North American Datum 1983		
Map Zone:	Zone 13N (108 W to 102 W)		

Site		2N-65W-13 Swartz 16-13HZ Pad			
Site Position:		Northing:	14,575,037.83 usft	Latitude:	40.131978
From:	Lat/Long	Easting:	1,750,820.88 usft	Longitude:	-104.605010
Position Uncertainty:	0.00 usft	Slot Radius:	13-3/16 "	Grid Convergence:	0.25 °

Well	SWARTZ 26C-12HZ					
Well Position	+N/-S	-0.73 usft	Northing:	14,575,037.64 usft	Latitude:	40.131976
	+E/-W	119.91 usft	Easting:	1,750,940.80 usft	Longitude:	-104.604581
Position Uncertainty		3.28 usft	Wellhead Elevation:	0.00 usft	Ground Level:	4,956.00 usft

Wellbore	Plan B				
Magnetics	Model Name	Sample Date	Declination (°)	Dip Angle (°)	Field Strength (nT)
	IGRF2010	7/29/2015	8.20	66.72	52,572.25661174

Design	Permit Rev-1			
Audit Notes:				
Version:	Phase:	PROTOTYPE	Tie On Depth:	0.00
Vertical Section:	Depth From (TVD) (usft)	+N/-S (usft)	+E/-W (usft)	Direction (°)
	0.00	0.00	0.00	0.83

Plan Survey Tool Program	Date	12/8/2016		
Depth From (usft)	Depth To (usft)	Survey (Wellbore)	Tool Name	Remarks
1	0.00	1,500.00	Permit Rev-1 (Plan B)	APC_ISCWSA REV 2 MWD+II Fixed:v2:crustal field declination
2	1,500.00	17,733.56	Permit Rev-1 (Plan B)	APC_ISCWSA REV 2 MWD+II Fixed:v2:crustal field declination

Corporate Planning Report

Database:	PLANNING	Local Co-ordinate Reference:	Well SWARTZ 26C-12HZ
Company:	US ROCKIES WATTENBERG PLANNING	TVD Reference:	RKB = 17' @ 4973.00usft (D Rig)
Project:	WELD-NAD83-UTMFT13N	MD Reference:	RKB = 17' @ 4973.00usft (D Rig)
Site:	2N-65W-13 Swartz 16-13HZ Pad	North Reference:	True
Well:	SWARTZ 26C-12HZ	Survey Calculation Method:	Minimum Curvature
Wellbore:	Plan B		
Design:	Permit Rev-1		

Plan Sections										
Measured Depth (usft)	Inclination (°)	Azimuth (°)	Vertical Depth (usft)	+N/-S (usft)	+E/-W (usft)	Dogleg Rate (°/100usft)	Build Rate (°/100usft)	Turn Rate (°/100usft)	TFO (°)	Target
0.00	0.00	0.00	0.00	0.00	0.00	0.00	0.00	0.00	0.00	
250.00	0.00	0.00	250.00	0.00	0.00	0.00	0.00	0.00	0.00	
783.33	8.00	129.00	781.60	-23.39	28.89	1.50	1.50	0.00	129.00	
2,633.33	8.00	129.00	2,613.60	-185.43	228.98	0.00	0.00	0.00	0.00	
3,033.33	0.00	0.00	3,012.30	-202.97	250.65	2.00	-2.00	0.00	180.00	
6,605.41	0.00	0.00	6,584.38	-202.97	250.65	0.00	0.00	0.00	0.00	
7,605.10	89.97	0.83	7,221.00	433.27	259.90	9.00	9.00	0.08	0.83	
17,733.56	89.97	0.83	7,226.00	10,560.65	407.19	0.00	0.00	0.00	0.00	SWARTZ 26C-12HZ_

Corporate
Planning Report

Database:	PLANNING	Local Co-ordinate Reference:	Well SWARTZ 26C-12HZ
Company:	US ROCKIES WATTENBERG PLANNING	TVD Reference:	RKB = 17' @ 4973.00usft (D Rig)
Project:	WELD-NAD83-UTMFT13N	MD Reference:	RKB = 17' @ 4973.00usft (D Rig)
Site:	2N-65W-13 Swartz 16-13HZ Pad	North Reference:	True
Well:	SWARTZ 26C-12HZ	Survey Calculation Method:	Minimum Curvature
Wellbore:	Plan B		
Design:	Permit Rev-1		

Planned Survey									
Measured Depth (usft)	Inclination (°)	Azimuth (°)	Vertical Depth (usft)	+N/-S (usft)	+E/-W (usft)	Vertical Section (usft)	Dogleg Rate (°/100usft)	Build Rate (°/100usft)	Turn Rate (°/100usft)
0.00	0.00	0.00	0.00	0.00	0.00	0.00	0.00	0.00	0.00
100.00	0.00	0.00	100.00	0.00	0.00	0.00	0.00	0.00	0.00
200.00	0.00	0.00	200.00	0.00	0.00	0.00	0.00	0.00	0.00
250.00	0.00	0.00	250.00	0.00	0.00	0.00	0.00	0.00	0.00
Begin Nudge @ 250.00ft									
300.00	0.75	129.00	300.00	-0.21	0.25	-0.20	1.50	1.50	0.00
400.00	2.25	129.00	399.96	-1.85	2.29	-1.82	1.50	1.50	0.00
500.00	3.75	129.00	499.82	-5.15	6.36	-5.05	1.50	1.50	0.00
600.00	5.25	129.00	599.51	-10.08	12.45	-9.90	1.50	1.50	0.00
700.00	6.75	129.00	698.96	-16.66	20.58	-16.36	1.50	1.50	0.00
783.33	8.00	129.00	781.60	-23.39	28.89	-22.97	1.50	1.50	0.00
End Nudge @ 783.33ft									
800.00	8.00	129.00	798.11	-24.85	30.69	-24.41	0.00	0.00	0.00
900.00	8.00	129.00	897.13	-33.61	41.51	-33.01	0.00	0.00	0.00
1,000.00	8.00	129.00	996.16	-42.37	52.32	-41.61	0.00	0.00	0.00
1,100.00	8.00	129.00	1,095.19	-51.13	63.14	-50.21	0.00	0.00	0.00
1,200.00	8.00	129.00	1,194.21	-59.89	73.95	-58.81	0.00	0.00	0.00
1,300.00	8.00	129.00	1,293.24	-68.65	84.77	-67.41	0.00	0.00	0.00
1,379.53	8.00	129.00	1,372.00	-75.61	93.37	-74.25	0.00	0.00	0.00
Fox Hills Mkr									
1,400.00	8.00	129.00	1,392.27	-77.40	95.59	-76.01	0.00	0.00	0.00
1,500.00	8.00	129.00	1,491.29	-86.16	106.40	-84.61	0.00	0.00	0.00
1,508.79	8.00	129.00	1,500.00	-86.93	107.35	-85.37	0.00	0.00	0.00
9 5/8"									
1,600.00	8.00	129.00	1,590.32	-94.92	117.22	-93.21	0.00	0.00	0.00
1,700.00	8.00	129.00	1,689.35	-103.68	128.03	-101.81	0.00	0.00	0.00
1,800.00	8.00	129.00	1,788.37	-112.44	138.85	-110.41	0.00	0.00	0.00
1,900.00	8.00	129.00	1,887.40	-121.20	149.67	-119.02	0.00	0.00	0.00
2,000.00	8.00	129.00	1,986.43	-129.95	160.48	-127.62	0.00	0.00	0.00
2,100.00	8.00	129.00	2,085.46	-138.71	171.30	-136.22	0.00	0.00	0.00
2,200.00	8.00	129.00	2,184.48	-147.47	182.11	-144.82	0.00	0.00	0.00
2,300.00	8.00	129.00	2,283.51	-156.23	192.93	-153.42	0.00	0.00	0.00
2,400.00	8.00	129.00	2,382.54	-164.99	203.74	-162.02	0.00	0.00	0.00
2,500.00	8.00	129.00	2,481.56	-173.75	214.56	-170.62	0.00	0.00	0.00
2,600.00	8.00	129.00	2,580.59	-182.51	225.38	-179.22	0.00	0.00	0.00
2,633.33	8.00	129.00	2,613.59	-185.42	228.98	-182.09	0.00	0.00	0.00
Begin Drop @ 2633.33ft									
2,700.00	6.67	129.00	2,679.72	-190.78	235.59	-187.35	2.00	-2.00	0.00
2,800.00	4.67	129.00	2,779.22	-196.99	243.27	-193.45	2.00	-2.00	0.00
2,900.00	2.67	129.00	2,879.01	-201.02	248.24	-197.40	2.00	-2.00	0.00
3,000.00	0.67	129.00	2,978.97	-202.85	250.50	-199.20	2.00	-2.00	0.00
3,033.33	0.00	0.00	3,012.30	-202.97	250.65	-199.32	2.00	-2.00	-387.04
End Drop @ 3033.33ft									
3,100.00	0.00	0.00	3,078.97	-202.97	250.65	-199.32	0.00	0.00	0.00
3,200.00	0.00	0.00	3,178.97	-202.97	250.65	-199.32	0.00	0.00	0.00
3,300.00	0.00	0.00	3,278.97	-202.97	250.65	-199.32	0.00	0.00	0.00
3,400.00	0.00	0.00	3,378.97	-202.97	250.65	-199.32	0.00	0.00	0.00
3,500.00	0.00	0.00	3,478.97	-202.97	250.65	-199.32	0.00	0.00	0.00
3,600.00	0.00	0.00	3,578.97	-202.97	250.65	-199.32	0.00	0.00	0.00
3,700.00	0.00	0.00	3,678.97	-202.97	250.65	-199.32	0.00	0.00	0.00
3,800.00	0.00	0.00	3,778.97	-202.97	250.65	-199.32	0.00	0.00	0.00
3,900.00	0.00	0.00	3,878.97	-202.97	250.65	-199.32	0.00	0.00	0.00
4,000.00	0.00	0.00	3,978.97	-202.97	250.65	-199.32	0.00	0.00	0.00

Corporate
Planning Report

Database:	PLANNING	Local Co-ordinate Reference:	Well SWARTZ 26C-12HZ
Company:	US ROCKIES WATTENBERG PLANNING	TVD Reference:	RKB = 17' @ 4973.00usft (D Rig)
Project:	WELD-NAD83-UTMFT13N	MD Reference:	RKB = 17' @ 4973.00usft (D Rig)
Site:	2N-65W-13 Swartz 16-13HZ Pad	North Reference:	True
Well:	SWARTZ 26C-12HZ	Survey Calculation Method:	Minimum Curvature
Wellbore:	Plan B		
Design:	Permit Rev-1		

Planned Survey									
Measured Depth (usft)	Inclination (°)	Azimuth (°)	Vertical Depth (usft)	+N/-S (usft)	+E/-W (usft)	Vertical Section (usft)	Dogleg Rate (°/100usft)	Build Rate (°/100usft)	Turn Rate (°/100usft)
4,079.03	0.00	0.00	4,058.00	-202.97	250.65	-199.32	0.00	0.00	0.00
Parkman									
4,100.00	0.00	0.00	4,078.97	-202.97	250.65	-199.32	0.00	0.00	0.00
4,200.00	0.00	0.00	4,178.97	-202.97	250.65	-199.32	0.00	0.00	0.00
4,300.00	0.00	0.00	4,278.97	-202.97	250.65	-199.32	0.00	0.00	0.00
4,400.00	0.00	0.00	4,378.97	-202.97	250.65	-199.32	0.00	0.00	0.00
4,470.03	0.00	0.00	4,449.00	-202.97	250.65	-199.32	0.00	0.00	0.00
Sussex									
4,500.00	0.00	0.00	4,478.97	-202.97	250.65	-199.32	0.00	0.00	0.00
4,600.00	0.00	0.00	4,578.97	-202.97	250.65	-199.32	0.00	0.00	0.00
4,700.00	0.00	0.00	4,678.97	-202.97	250.65	-199.32	0.00	0.00	0.00
4,800.00	0.00	0.00	4,778.97	-202.97	250.65	-199.32	0.00	0.00	0.00
4,900.00	0.00	0.00	4,878.97	-202.97	250.65	-199.32	0.00	0.00	0.00
5,000.00	0.00	0.00	4,978.97	-202.97	250.65	-199.32	0.00	0.00	0.00
5,100.00	0.00	0.00	5,078.97	-202.97	250.65	-199.32	0.00	0.00	0.00
5,200.00	0.00	0.00	5,178.97	-202.97	250.65	-199.32	0.00	0.00	0.00
5,300.00	0.00	0.00	5,278.97	-202.97	250.65	-199.32	0.00	0.00	0.00
5,400.00	0.00	0.00	5,378.97	-202.97	250.65	-199.32	0.00	0.00	0.00
5,500.00	0.00	0.00	5,478.97	-202.97	250.65	-199.32	0.00	0.00	0.00
5,600.00	0.00	0.00	5,578.97	-202.97	250.65	-199.32	0.00	0.00	0.00
5,700.00	0.00	0.00	5,678.97	-202.97	250.65	-199.32	0.00	0.00	0.00
5,800.00	0.00	0.00	5,778.97	-202.97	250.65	-199.32	0.00	0.00	0.00
5,900.00	0.00	0.00	5,878.97	-202.97	250.65	-199.32	0.00	0.00	0.00
6,000.00	0.00	0.00	5,978.97	-202.97	250.65	-199.32	0.00	0.00	0.00
6,100.00	0.00	0.00	6,078.97	-202.97	250.65	-199.32	0.00	0.00	0.00
6,200.00	0.00	0.00	6,178.97	-202.97	250.65	-199.32	0.00	0.00	0.00
6,300.00	0.00	0.00	6,278.97	-202.97	250.65	-199.32	0.00	0.00	0.00
6,400.00	0.00	0.00	6,378.97	-202.97	250.65	-199.32	0.00	0.00	0.00
6,500.00	0.00	0.00	6,478.97	-202.97	250.65	-199.32	0.00	0.00	0.00
6,600.00	0.00	0.00	6,578.97	-202.97	250.65	-199.32	0.00	0.00	0.00
6,605.41	0.00	0.00	6,584.38	-202.97	250.65	-199.32	0.00	0.00	0.00
KOP @ 6605.41ft									
6,700.00	8.51	0.83	6,678.62	-195.96	250.75	-192.30	9.00	9.00	0.00
6,800.00	17.51	0.83	6,775.95	-173.47	251.08	-169.81	9.00	9.00	0.00
6,879.42	24.66	0.83	6,850.00	-144.92	251.49	-141.26	9.00	9.00	0.00
Sharon Springs									
6,900.00	26.51	0.83	6,868.57	-136.03	251.62	-132.37	9.00	9.00	0.00
6,937.95	29.93	0.83	6,902.00	-118.09	251.88	-114.43	9.00	9.00	0.00
Niobrara									
7,000.00	35.51	0.83	6,954.18	-84.56	252.37	-80.90	9.00	9.00	0.00
7,018.40	37.17	0.83	6,969.00	-73.66	252.53	-70.00	9.00	9.00	0.00
Nio B									
7,100.00	44.51	0.83	7,030.69	-20.34	253.30	-16.67	9.00	9.00	0.00
DLS = 9°/100'									
7,113.19	45.70	0.83	7,040.00	-11.00	253.44	-7.33	9.00	9.00	0.00
Nio C									
7,200.00	53.51	0.83	7,096.22	55.06	254.40	58.74	9.00	9.00	0.00
7,300.00	62.51	0.83	7,149.13	139.78	255.63	143.47	9.00	9.00	0.00
7,346.32	66.68	0.83	7,169.00	181.61	256.24	185.30	9.00	9.00	0.00
Fort Hayes									
7,400.00	71.51	0.83	7,188.15	231.74	256.97	235.43	9.00	9.00	0.00
7,412.52	72.64	0.83	7,192.00	243.65	257.14	247.35	9.00	9.00	0.00
Codell									

Corporate Planning Report

Database:	PLANNING	Local Co-ordinate Reference:	Well SWARTZ 26C-12HZ
Company:	US ROCKIES WATTENBERG PLANNING	TVD Reference:	RKB = 17' @ 4973.00usft (D Rig)
Project:	WELD-NAD83-UTMFT13N	MD Reference:	RKB = 17' @ 4973.00usft (D Rig)
Site:	2N-65W-13 Swartz 16-13HZ Pad	North Reference:	True
Well:	SWARTZ 26C-12HZ	Survey Calculation Method:	Minimum Curvature
Wellbore:	Plan B		
Design:	Permit Rev-1		

Planned Survey									
Measured Depth (usft)	Inclination (°)	Azimuth (°)	Vertical Depth (usft)	+N/-S (usft)	+E/-W (usft)	Vertical Section (usft)	Dogleg Rate (°/100usft)	Build Rate (°/100usft)	Turn Rate (°/100usft)
7,500.00	80.51	0.83	7,212.29	328.66	258.38	332.37	9.00	9.00	0.00
7,600.00	89.51	0.83	7,220.98	428.17	259.83	431.89	9.00	9.00	0.00
7,605.10	89.97	0.83	7,221.00	433.27	259.90	436.99	9.00	9.00	0.00
End Build @ 7605.10ft - Top of Production									
7,700.00	89.97	0.83	7,221.05	528.16	261.28	531.89	0.00	0.00	0.00
7,800.00	89.97	0.83	7,221.10	628.15	262.73	631.89	0.00	0.00	0.00
7,900.00	89.97	0.83	7,221.15	728.14	264.19	731.89	0.00	0.00	0.00
8,000.00	89.97	0.83	7,221.19	828.13	265.64	831.89	0.00	0.00	0.00
8,100.00	89.97	0.83	7,221.24	928.12	267.10	931.89	0.00	0.00	0.00
8,200.00	89.97	0.83	7,221.29	1,028.11	268.55	1,031.89	0.00	0.00	0.00
8,300.00	89.97	0.83	7,221.34	1,128.10	270.01	1,131.89	0.00	0.00	0.00
8,400.00	89.97	0.83	7,221.39	1,228.08	271.46	1,231.89	0.00	0.00	0.00
8,500.00	89.97	0.83	7,221.44	1,328.07	272.91	1,331.89	0.00	0.00	0.00
8,600.00	89.97	0.83	7,221.49	1,428.06	274.37	1,431.89	0.00	0.00	0.00
8,700.00	89.97	0.83	7,221.54	1,528.05	275.82	1,531.89	0.00	0.00	0.00
8,800.00	89.97	0.83	7,221.59	1,628.04	277.28	1,631.89	0.00	0.00	0.00
8,900.00	89.97	0.83	7,221.64	1,728.03	278.73	1,731.89	0.00	0.00	0.00
9,000.00	89.97	0.83	7,221.69	1,828.02	280.19	1,831.89	0.00	0.00	0.00
9,100.00	89.97	0.83	7,221.74	1,928.01	281.64	1,931.89	0.00	0.00	0.00
9,200.00	89.97	0.83	7,221.79	2,028.00	283.09	2,031.89	0.00	0.00	0.00
9,300.00	89.97	0.83	7,221.84	2,127.99	284.55	2,131.89	0.00	0.00	0.00
9,400.00	89.97	0.83	7,221.89	2,227.98	286.00	2,231.89	0.00	0.00	0.00
9,500.00	89.97	0.83	7,221.94	2,327.97	287.46	2,331.89	0.00	0.00	0.00
9,600.00	89.97	0.83	7,221.98	2,427.96	288.91	2,431.89	0.00	0.00	0.00
9,700.00	89.97	0.83	7,222.03	2,527.95	290.36	2,531.89	0.00	0.00	0.00
9,800.00	89.97	0.83	7,222.08	2,627.94	291.82	2,631.89	0.00	0.00	0.00
9,900.00	89.97	0.83	7,222.13	2,727.93	293.27	2,731.89	0.00	0.00	0.00
10,000.00	89.97	0.83	7,222.18	2,827.92	294.73	2,831.89	0.00	0.00	0.00
10,100.00	89.97	0.83	7,222.23	2,927.90	296.18	2,931.89	0.00	0.00	0.00
10,200.00	89.97	0.83	7,222.28	3,027.89	297.64	3,031.89	0.00	0.00	0.00
10,300.00	89.97	0.83	7,222.33	3,127.88	299.09	3,131.89	0.00	0.00	0.00
10,400.00	89.97	0.83	7,222.38	3,227.87	300.54	3,231.89	0.00	0.00	0.00
10,500.00	89.97	0.83	7,222.43	3,327.86	302.00	3,331.89	0.00	0.00	0.00
10,600.00	89.97	0.83	7,222.48	3,427.85	303.45	3,431.89	0.00	0.00	0.00
10,700.00	89.97	0.83	7,222.53	3,527.84	304.91	3,531.89	0.00	0.00	0.00
10,800.00	89.97	0.83	7,222.58	3,627.83	306.36	3,631.89	0.00	0.00	0.00
10,900.00	89.97	0.83	7,222.63	3,727.82	307.81	3,731.89	0.00	0.00	0.00
11,000.00	89.97	0.83	7,222.68	3,827.81	309.27	3,831.89	0.00	0.00	0.00
11,100.00	89.97	0.83	7,222.72	3,927.80	310.72	3,931.89	0.00	0.00	0.00
11,200.00	89.97	0.83	7,222.77	4,027.79	312.18	4,031.89	0.00	0.00	0.00
11,300.00	89.97	0.83	7,222.82	4,127.78	313.63	4,131.89	0.00	0.00	0.00
11,400.00	89.97	0.83	7,222.87	4,227.77	315.09	4,231.89	0.00	0.00	0.00
11,500.00	89.97	0.83	7,222.92	4,327.76	316.54	4,331.89	0.00	0.00	0.00
11,600.00	89.97	0.83	7,222.97	4,427.75	317.99	4,431.89	0.00	0.00	0.00
11,700.00	89.97	0.83	7,223.02	4,527.74	319.45	4,531.89	0.00	0.00	0.00
11,800.00	89.97	0.83	7,223.07	4,627.72	320.90	4,631.89	0.00	0.00	0.00
11,900.00	89.97	0.83	7,223.12	4,727.71	322.36	4,731.89	0.00	0.00	0.00
12,000.00	89.97	0.83	7,223.17	4,827.70	323.81	4,831.89	0.00	0.00	0.00
12,100.00	89.97	0.83	7,223.22	4,927.69	325.26	4,931.89	0.00	0.00	0.00
12,200.00	89.97	0.83	7,223.27	5,027.68	326.72	5,031.89	0.00	0.00	0.00
12,300.00	89.97	0.83	7,223.32	5,127.67	328.17	5,131.89	0.00	0.00	0.00
12,400.00	89.97	0.83	7,223.37	5,227.66	329.63	5,231.89	0.00	0.00	0.00
12,500.00	89.97	0.83	7,223.42	5,327.65	331.08	5,331.89	0.00	0.00	0.00

Corporate Planning Report

Database:	PLANNING	Local Co-ordinate Reference:	Well SWARTZ 26C-12HZ
Company:	US ROCKIES WATTENBERG PLANNING	TVD Reference:	RKB = 17' @ 4973.00usft (D Rig)
Project:	WELD-NAD83-UTMFT13N	MD Reference:	RKB = 17' @ 4973.00usft (D Rig)
Site:	2N-65W-13 Swartz 16-13HZ Pad	North Reference:	True
Well:	SWARTZ 26C-12HZ	Survey Calculation Method:	Minimum Curvature
Wellbore:	Plan B		
Design:	Permit Rev-1		

Planned Survey									
Measured Depth (usft)	Inclination (°)	Azimuth (°)	Vertical Depth (usft)	+N/-S (usft)	+E/-W (usft)	Vertical Section (usft)	Dogleg Rate (°/100usft)	Build Rate (°/100usft)	Turn Rate (°/100usft)
12,600.00	89.97	0.83	7,223.47	5,427.64	332.54	5,431.89	0.00	0.00	0.00
12,700.00	89.97	0.83	7,223.51	5,527.63	333.99	5,531.89	0.00	0.00	0.00
12,800.00	89.97	0.83	7,223.56	5,627.62	335.44	5,631.89	0.00	0.00	0.00
12,900.00	89.97	0.83	7,223.61	5,727.61	336.90	5,731.89	0.00	0.00	0.00
13,000.00	89.97	0.83	7,223.66	5,827.60	338.35	5,831.89	0.00	0.00	0.00
13,100.00	89.97	0.83	7,223.71	5,927.59	339.81	5,931.89	0.00	0.00	0.00
13,200.00	89.97	0.83	7,223.76	6,027.58	341.26	6,031.89	0.00	0.00	0.00
13,300.00	89.97	0.83	7,223.81	6,127.57	342.71	6,131.89	0.00	0.00	0.00
13,400.00	89.97	0.83	7,223.86	6,227.56	344.17	6,231.89	0.00	0.00	0.00
13,500.00	89.97	0.83	7,223.91	6,327.54	345.62	6,331.89	0.00	0.00	0.00
13,600.00	89.97	0.83	7,223.96	6,427.53	347.08	6,431.89	0.00	0.00	0.00
13,700.00	89.97	0.83	7,224.01	6,527.52	348.53	6,531.89	0.00	0.00	0.00
13,800.00	89.97	0.83	7,224.06	6,627.51	349.99	6,631.89	0.00	0.00	0.00
13,900.00	89.97	0.83	7,224.11	6,727.50	351.44	6,731.89	0.00	0.00	0.00
14,000.00	89.97	0.83	7,224.16	6,827.49	352.89	6,831.89	0.00	0.00	0.00
14,100.00	89.97	0.83	7,224.21	6,927.48	354.35	6,931.89	0.00	0.00	0.00
14,200.00	89.97	0.83	7,224.26	7,027.47	355.80	7,031.89	0.00	0.00	0.00
14,300.00	89.97	0.83	7,224.30	7,127.46	357.26	7,131.89	0.00	0.00	0.00
14,400.00	89.97	0.83	7,224.35	7,227.45	358.71	7,231.89	0.00	0.00	0.00
14,500.00	89.97	0.83	7,224.40	7,327.44	360.16	7,331.89	0.00	0.00	0.00
14,600.00	89.97	0.83	7,224.45	7,427.43	361.62	7,431.89	0.00	0.00	0.00
14,700.00	89.97	0.83	7,224.50	7,527.42	363.07	7,531.89	0.00	0.00	0.00
14,800.00	89.97	0.83	7,224.55	7,627.41	364.53	7,631.89	0.00	0.00	0.00
14,900.00	89.97	0.83	7,224.60	7,727.40	365.98	7,731.89	0.00	0.00	0.00
15,000.00	89.97	0.83	7,224.65	7,827.39	367.44	7,831.89	0.00	0.00	0.00
15,100.00	89.97	0.83	7,224.70	7,927.38	368.89	7,931.89	0.00	0.00	0.00
15,200.00	89.97	0.83	7,224.75	8,027.36	370.34	8,031.89	0.00	0.00	0.00
15,300.00	89.97	0.83	7,224.80	8,127.35	371.80	8,131.89	0.00	0.00	0.00
15,400.00	89.97	0.83	7,224.85	8,227.34	373.25	8,231.89	0.00	0.00	0.00
15,500.00	89.97	0.83	7,224.90	8,327.33	374.71	8,331.89	0.00	0.00	0.00
15,600.00	89.97	0.83	7,224.95	8,427.32	376.16	8,431.89	0.00	0.00	0.00
15,700.00	89.97	0.83	7,225.00	8,527.31	377.61	8,531.89	0.00	0.00	0.00
15,800.00	89.97	0.83	7,225.05	8,627.30	379.07	8,631.89	0.00	0.00	0.00
15,900.00	89.97	0.83	7,225.09	8,727.29	380.52	8,731.89	0.00	0.00	0.00
16,000.00	89.97	0.83	7,225.14	8,827.28	381.98	8,831.89	0.00	0.00	0.00
16,100.00	89.97	0.83	7,225.19	8,927.27	383.43	8,931.89	0.00	0.00	0.00
16,200.00	89.97	0.83	7,225.24	9,027.26	384.89	9,031.89	0.00	0.00	0.00
16,300.00	89.97	0.83	7,225.29	9,127.25	386.34	9,131.89	0.00	0.00	0.00
16,400.00	89.97	0.83	7,225.34	9,227.24	387.79	9,231.89	0.00	0.00	0.00
16,500.00	89.97	0.83	7,225.39	9,327.23	389.25	9,331.89	0.00	0.00	0.00
16,600.00	89.97	0.83	7,225.44	9,427.22	390.70	9,431.89	0.00	0.00	0.00
16,700.00	89.97	0.83	7,225.49	9,527.21	392.16	9,531.89	0.00	0.00	0.00
16,800.00	89.97	0.83	7,225.54	9,627.20	393.61	9,631.89	0.00	0.00	0.00
16,900.00	89.97	0.83	7,225.59	9,727.18	395.06	9,731.89	0.00	0.00	0.00
17,000.00	89.97	0.83	7,225.64	9,827.17	396.52	9,831.89	0.00	0.00	0.00
17,100.00	89.97	0.83	7,225.69	9,927.16	397.97	9,931.89	0.00	0.00	0.00
17,200.00	89.97	0.83	7,225.74	10,027.15	399.43	10,031.89	0.00	0.00	0.00
17,300.00	89.97	0.83	7,225.79	10,127.14	400.88	10,131.89	0.00	0.00	0.00
17,400.00	89.97	0.83	7,225.84	10,227.13	402.34	10,231.89	0.00	0.00	0.00
17,500.00	89.97	0.83	7,225.88	10,327.12	403.79	10,331.89	0.00	0.00	0.00
17,600.00	89.97	0.83	7,225.93	10,427.11	405.24	10,431.89	0.00	0.00	0.00
17,700.00	89.97	0.83	7,225.98	10,527.10	406.70	10,531.89	0.00	0.00	0.00
17,733.56	89.97	0.83	7,226.00	10,560.65	407.19	10,565.44	0.00	0.00	0.00
TD Well @ 17733.56ft									

Corporate Planning Report

Database:	PLANNING	Local Co-ordinate Reference:	Well SWARTZ 26C-12HZ
Company:	US ROCKIES WATTENBERG PLANNING	TVD Reference:	RKB = 17' @ 4973.00usft (D Rig)
Project:	WELD-NAD83-UTMFT13N	MD Reference:	RKB = 17' @ 4973.00usft (D Rig)
Site:	2N-65W-13 Swartz 16-13HZ Pad	North Reference:	True
Well:	SWARTZ 26C-12HZ	Survey Calculation Method:	Minimum Curvature
Wellbore:	Plan B		
Design:	Permit Rev-1		

Planned Survey									
Measured Depth (usft)	Inclination (°)	Azimuth (°)	Vertical Depth (usft)	+N/-S (usft)	+E/-W (usft)	Vertical Section (usft)	Dogleg Rate (°/100usft)	Build Rate (°/100usft)	Turn Rate (°/100usft)

Casing Points					
Measured Depth (usft)	Vertical Depth (usft)	Name	Casing Diameter (")	Hole Diameter (")	
1,508.79	1,500.00	9 5/8"	9-5/8	13-1/2	
7,605.10	7,221.00	Top of Production	5-1/2	7-7/8	

Formations						
Measured Depth (usft)	Vertical Depth (usft)	Name	Lithology	Dip (°)	Dip Direction (°)	
1,379.53	1,372.00	Fox Hills Mkr				
4,079.03	4,058.00	Parkman				
4,470.03	4,449.00	Sussex				
6,879.42	6,850.00	Sharon Springs				
6,937.95	6,902.00	Niobrara				
7,018.40	6,969.00	Nio B				
7,113.19	7,040.00	Nio C				
7,346.32	7,169.00	Fort Hayes				
7,412.52	7,192.00	Codell				