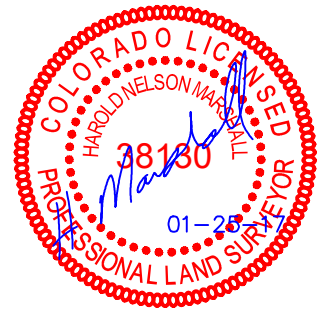




LINE TABLE		
LINE	DIRECTION	LENGTH
L1	S56°13'40"E	2345.08'
L2	S61°16'29"E	2222.97'
L3	S66°36'07"E	2124.13'
L4	S72°40'13"E	2042.17'
L5	S78°52'58"E	1986.79'
L6	S85°39'10"E	1955.46'
L7	N87°44'19"E	1951.39'

LINE TABLE		
LINE	DIRECTION	LENGTH
L8	N80°54'11"E	1974.75'
L9	N68°23'38"E	2097.36'
L10	N41°07'58"W	1035.44'
L11	N51°20'12"W	872.39'
L12	N64°51'12"W	752.58'
L13	N82°55'26"W	686.55'
L14	S78°21'59"W	695.67'

LINE TABLE		
LINE	DIRECTION	LENGTH
L15	S61°08'36"W	778.06'
L16	S48°36'18"W	908.48'
L17	S39°12'14"W	1078.31'
L18	S32°43'24"W	1260.93'
L19	S27°44'39"W	1464.38'



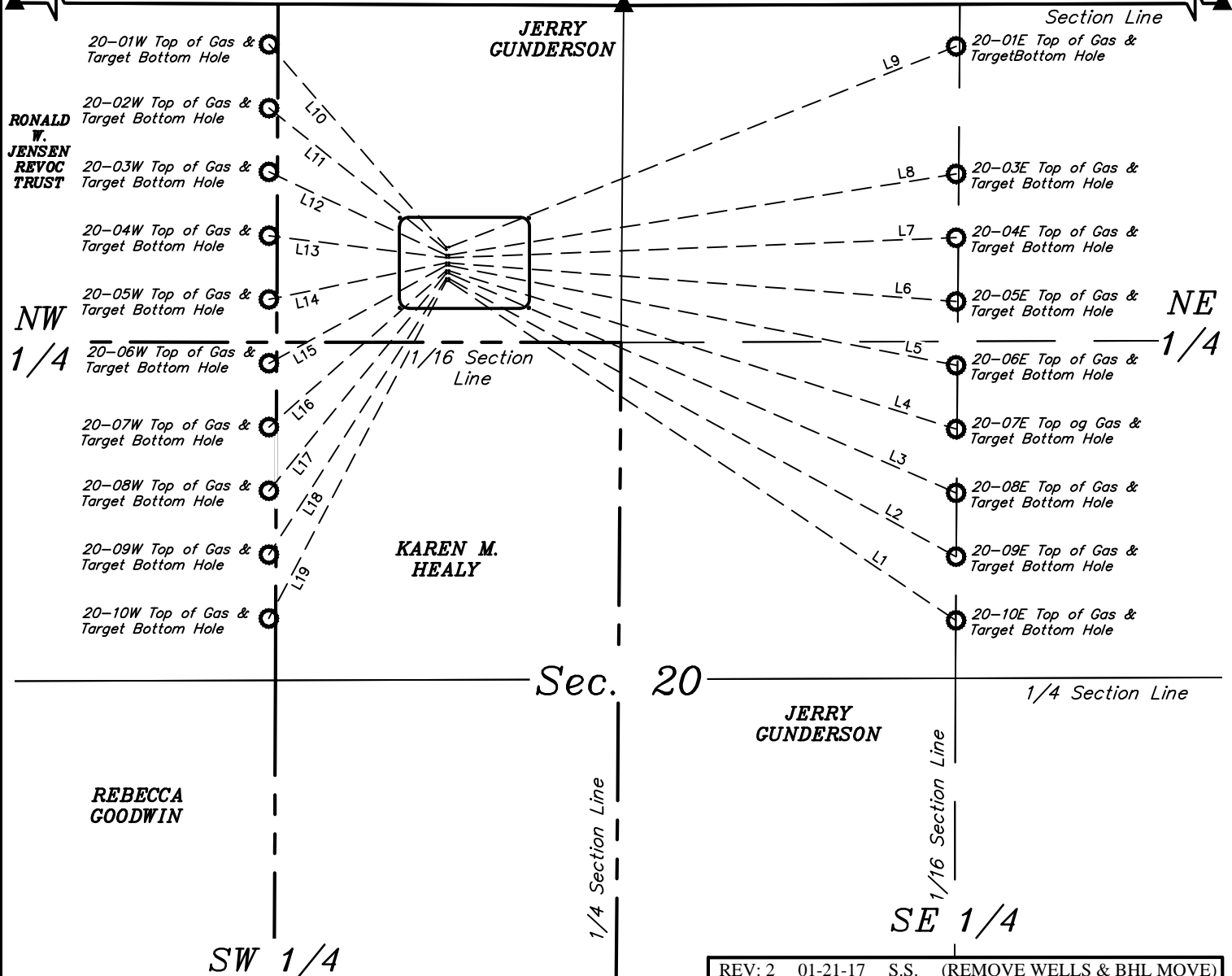
NW Cor. Sec. 20,  
2007 Alum. Cap  
#17492

N89°46'04"W - 2657.08' (Meas.)

1997 Alum. Cap  
#12093, 0.4' High

S89°48'48"W - 2583.18' (Meas.)

NE Cor. Sec. 20,  
Set Marked Stone,  
Steel Post



#### NOTES:

REV: 2 01-21-17 S.S. (REMOVE WELLS & BHL MOVE)

**LARAMIE ENERGY, LLC**

**GUNDERTSON 20-03 PAD**  
**NE 1/4 NW 1/4, SECTION 20, T9S, R93W, 6th P.M.**  
**MESA COUNTY, COLORADO**



**UELS, LLC**  
Corporate Office \* 85 South 200 East  
Vernal, UT 84078 \* (435) 789-1017

DRAWN BY: S.S.	DATE DRAWN: 10-20-16
SCALE: 1" = 600'	
<b>MULTI-WELL PLAN</b>	<b>FIGURE #7</b>