

Brian T. Brinkman—On behalf of East40, Inc.  
Colorado Licensed Professional Land Surveyor No. 38175  
DATE: 9/18/2015  
PROJECT#: 2014230

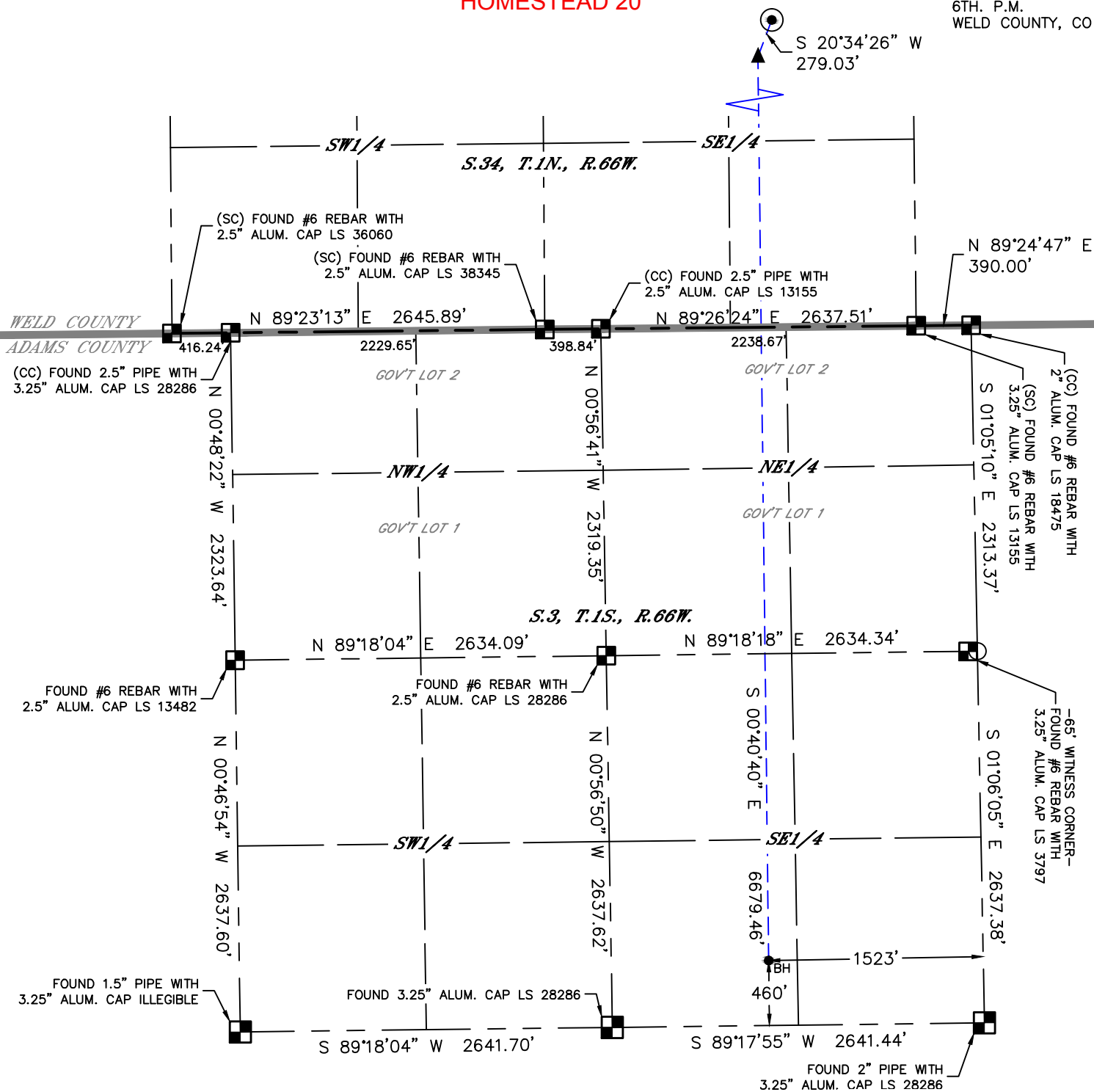


Lat40°, Inc. 6250 W. 10th Street, Unit 2, Greeley, CO 970-515-5294

# WELL LOCATION CERTIFICATE

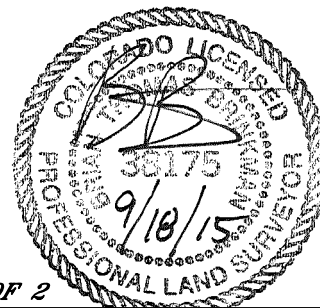
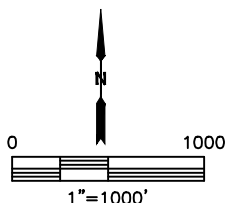
HOMESTEAD 20

SECTION: 34  
TOWNSHIP: 1N  
RANGE: 66W  
6TH. P.M.  
WELD COUNTY, CO



## LEGEND

- = ALIQUOT MONUMENT AS DESCRIBED
- = CALCULATED POSITION
- = SURFACE HOLE LOCATION (SHL)
- ▲ = ENTRY POINT LOCATION (EP)
- = BOTTOM HOLE LOCATION (BHL)
- ⊙ = EXISTING WELL
- ⊙ = ABANDONED WELL



SHEET 2 OF 2

Brian T. Brinkman—On behalf of Lat40°, Inc.  
Colorado Licensed Professional Land Surveyor No. 38175  
DATE: 9/18/2015  
PROJECT#: 2014230

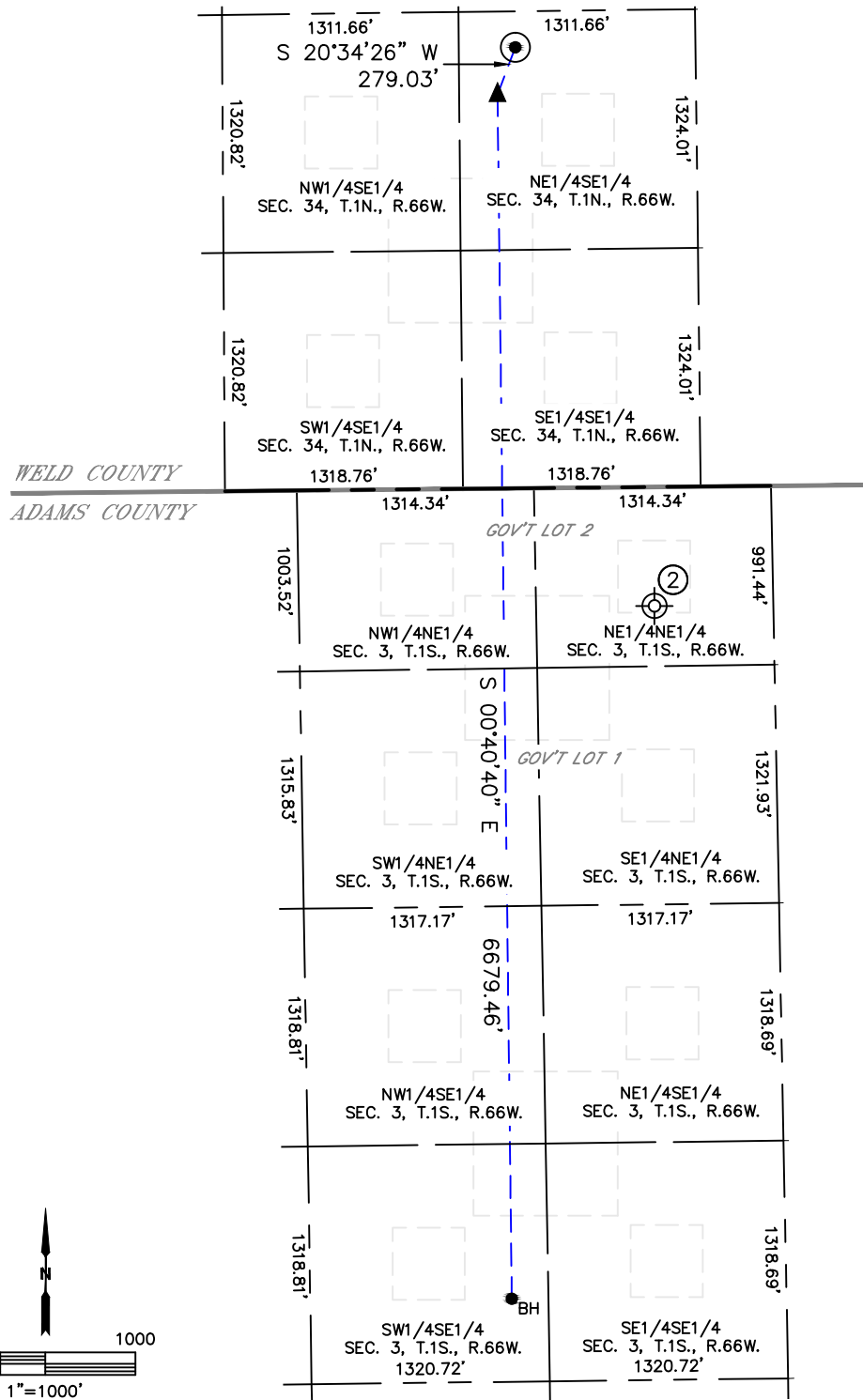


Lat40°, Inc. 6250 W. 10th Street, Unit 2, Greeley, CO 970-515-5294

# SITE SKETCH

## HOMESTEAD 20

SECTION: 34  
TOWNSHIP: 1N  
RANGE: 66W  
6TH. P.M.  
WELD COUNTY, CO



WELL NO.	WELL NAME	SHL FOOTAGE				SHL LAT°	SHL LONG°	PDOP	ELEV (FT.)	1/4/1/4
2	BERGMAN 1	660	FNL	660	FEL	39.99861	104.75491	NA	5097	NENE

DATE: 9/18/2015  
PROJECT#: 2014230