

Petro Operating Company

Location Weld County, CO
Field Wattenberg
Installation Homestead

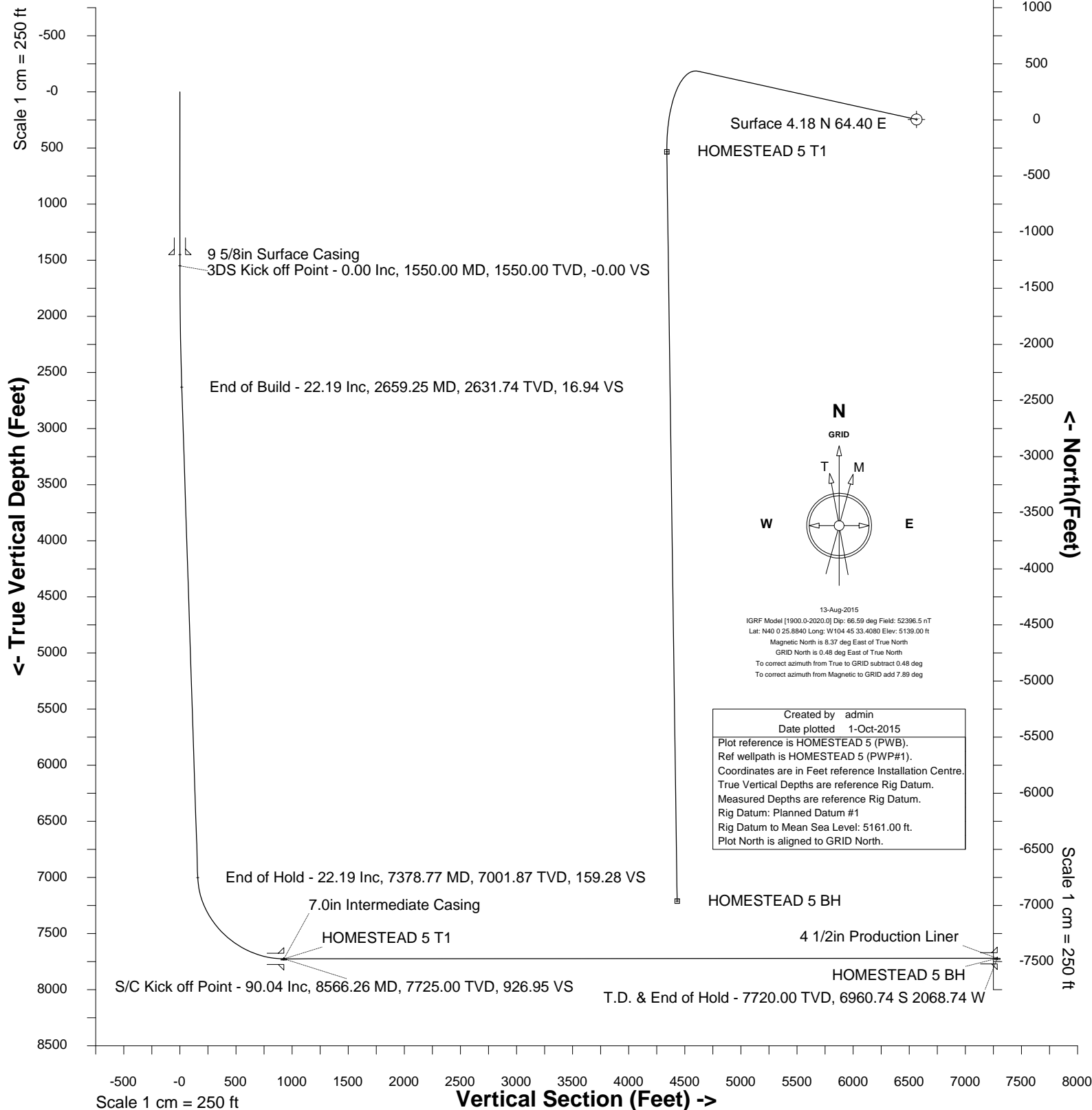
Slot HOMESTEAD 5
Well HOMESTEAD 5
Wellbore HOMESTEAD 5 (PWB)



Scale 1 cm = 250 ft

East (Feet) ->

-3000 -2500 -2000 -1500 -1000 -500 0 500





SYSDRILL
Well Design Combined Report
Wellbore: HOMESTEAD 5 (PWB)

Wellhead Details							
Name	Latitude	Longitude	Northing	Easting	North	East	Slot Elevation Above Ground
HOMESTEAD 5	40.00720000	-104.75905000	1246336.7544	3207555.4725	4.18N	64.40E	0.00

Declination		
Date	Source	Time
13-Aug-2015	IGRF Model [1900.0-2020.0]	08:38

Installation Details						
Name	Installation Position (Latitude)	Installation Position (Longitude)	Northing	Easting	Coord System Name	North Alignment
Homestead	40.00719000	-104.75928000	1246332.5735	3207491.0767	CO83-NF on NORTH AMERICAN DATUM 1983 datum	Grid

Summary Wellpath									
MD[ft]	Inc[deg]	Azi[deg]	TVD[ft]	North[ft]	East[ft]	Dogleg [deg/100ft]	Vertical Section[ft]	Northing	Easting
23.00	0.00	0.000	23.00	0.00N	0.00E		0.00	1246336.75	3207555.47
1550.00	0.00	282.450	1550.00	0.00N	0.00E	==>	0.00	1246336.75	3207555.47
2659.25	22.19	282.450	2631.74	45.71N	207.10W	2.00	16.94	1246382.46	3207348.38
7378.77	22.19	282.450	7001.87	429.82N	1947.30W	==>	159.28	1246766.56	3205608.24
8566.26	90.04	179.210	7725.00	288.07S	2224.76W	8.00	926.95	1246048.69	3205330.79
15243.74	90.04	179.210	7720.00	6964.92S	2133.14W	==>	7284.26	1239372.08	3205422.41

Interpolated Wellpath								
MD[ft]	Inc[deg]	Azi[deg]	TVD[ft]	North[ft]	East[ft]	Dogleg [deg/100ft]	Vertical Section[ft]	All Station Comments
0.00	0.00	0.000	0.00	0.00N	0.00E		0.00	Rig Datum
23.00	0.00	0.000	23.00	0.00N	0.00E	==>	0.00	Slot Datum
100.00	0.00	0.000	100.00	0.00N	0.00E	==>	0.00	
200.00	0.00	0.000	200.00	0.00N	0.00E	==>	0.00	
300.00	0.00	0.000	300.00	0.00N	0.00E	==>	0.00	
400.00	0.00	0.000	400.00	0.00N	0.00E	==>	0.00	
500.00	0.00	0.000	500.00	0.00N	0.00E	==>	0.00	
600.00	0.00	0.000	600.00	0.00N	0.00E	==>	0.00	
700.00	0.00	0.000	700.00	0.00N	0.00E	==>	0.00	
800.00	0.00	0.000	800.00	0.00N	0.00E	==>	0.00	
900.00	0.00	0.000	900.00	0.00N	0.00E	==>	0.00	
1000.00	0.00	0.000	1000.00	0.00N	0.00E	==>	0.00	
1100.00	0.00	0.000	1100.00	0.00N	0.00E	==>	0.00	
1200.00	0.00	0.000	1200.00	0.00N	0.00E	==>	0.00	
1300.00	0.00	0.000	1300.00	0.00N	0.00E	==>	0.00	
1400.00	0.00	0.000	1400.00	0.00N	0.00E	==>	0.00	9 5/8in Surface Casing 3DS Kick off Point
1450.00	0.00	0.000	1450.00	0.00N	0.00E	==>	0.00	
1500.00	0.00	0.000	1500.00	0.00N	0.00E	==>	0.00	
1550.00	0.00	282.450	1550.00	0.00N	0.00E	==>	0.00	
1600.00	1.00	282.450	1600.00	0.09N	0.43W	2.00	0.03	
1700.00	3.00	282.450	1699.93	0.85N	3.83W	2.00	0.31	
1800.00	5.00	282.450	1799.68	2.35N	10.65W	2.00	0.87	
1900.00	7.00	282.450	1899.13	4.60N	20.85W	2.00	1.71	
2000.00	9.00	282.450	1998.15	7.60N	34.44W	2.00	2.82	
2100.00	11.00	282.450	2096.63	11.34N	51.40W	2.00	4.20	
2200.00	13.00	282.450	2194.44	15.83N	71.70W	2.00	5.86	
2300.00	15.00	282.450	2291.46	21.04N	95.32W	2.00	7.80	
2400.00	17.00	282.450	2387.58	26.98N	122.24W	2.00	10.00	
2500.00	19.00	282.450	2482.68	33.64N	152.41W	2.00	12.47	
2600.00	21.00	282.450	2576.65	41.01N	185.81W	2.00	15.20	
2659.25	22.19	282.450	2631.74	45.71N	207.10W	2.00	16.94	End of Build
2700.00	22.19	282.450	2669.47	49.03N	222.12W	==>	18.17	
2800.00	22.19	282.450	2762.07	57.17N	258.99W	==>	21.18	
2900.00	22.19	282.450	2854.67	65.31N	295.87W	==>	24.20	
3000.00	22.19	282.450	2947.26	73.44N	332.74W	==>	27.22	
3100.00	22.19	282.450	3039.86	81.58N	369.61W	==>	30.23	

All data is in Feet unless otherwise stated
Coordinates are from Slot MD's are from Rig and TVD's are from Rig (Planned Datum #1 5161.0ft above Mean Sea Level)
Vertical Section is from 0.00N 0.00E on azimuth 197.030 degrees
Bottom hole distance is 7284.26 Feet on azimuth 197.03 degrees from Wellhead
Calculation method uses Minimum Curvature method
Prepared by Integrated Petroleum Technologies, Inc.
Date Printed: 1-Oct-2015



SYSDRILL
Well Design Combined Report
Wellbore: HOMESTEAD 5 (PWB)

Interpolated Wellpath								All Station Comments
MD[ft]	Inc[deg]	Azi[deg]	TVD[ft]	North[ft]	East[ft]	Dogleg [deg/100ft]	Vertical Section[ft]	
3200.00	22.19	282.450	3132.46	89.72N	406.48W	==>	33.25	
3300.00	22.19	282.450	3225.05	97.86N	443.36W	==>	36.26	
3400.00	22.19	282.450	3317.65	106.00N	480.23W	==>	39.28	
3500.00	22.19	282.450	3410.25	114.14N	517.10W	==>	42.30	
3600.00	22.19	282.450	3502.85	122.28N	553.97W	==>	45.31	
3700.00	22.19	282.450	3595.44	130.41N	590.85W	==>	48.33	
3800.00	22.19	282.450	3688.04	138.55N	627.72W	==>	51.34	
3900.00	22.19	282.450	3780.64	146.69N	664.59W	==>	54.36	
4000.00	22.19	282.450	3873.23	154.83N	701.46W	==>	57.38	
4100.00	22.19	282.450	3965.83	162.97N	738.34W	==>	60.39	
4200.00	22.19	282.450	4058.43	171.11N	775.21W	==>	63.41	
4300.00	22.19	282.450	4151.02	179.25N	812.08W	==>	66.42	
4400.00	22.19	282.450	4243.62	187.39N	848.95W	==>	69.44	
4500.00	22.19	282.450	4336.22	195.52N	885.83W	==>	72.46	
4600.00	22.19	282.450	4428.81	203.66N	922.70W	==>	75.47	
4700.00	22.19	282.450	4521.41	211.80N	959.57W	==>	78.49	
4800.00	22.19	282.450	4614.01	219.94N	996.44W	==>	81.50	
4900.00	22.19	282.450	4706.60	228.08N	1033.32W	==>	84.52	
5000.00	22.19	282.450	4799.20	236.22N	1070.19W	==>	87.53	
5100.00	22.19	282.450	4891.80	244.36N	1107.06W	==>	90.55	
5200.00	22.19	282.450	4984.40	252.49N	1143.93W	==>	93.57	
5300.00	22.19	282.450	5076.99	260.63N	1180.81W	==>	96.58	
5400.00	22.19	282.450	5169.59	268.77N	1217.68W	==>	99.60	
5500.00	22.19	282.450	5262.19	276.91N	1254.55W	==>	102.61	
5600.00	22.19	282.450	5354.78	285.05N	1291.42W	==>	105.63	
5700.00	22.19	282.450	5447.38	293.19N	1328.30W	==>	108.65	
5800.00	22.19	282.450	5539.98	301.33N	1365.17W	==>	111.66	
5900.00	22.19	282.450	5632.57	309.47N	1402.04W	==>	114.68	
6000.00	22.19	282.450	5725.17	317.60N	1438.91W	==>	117.69	
6100.00	22.19	282.450	5817.77	325.74N	1475.79W	==>	120.71	
6200.00	22.19	282.450	5910.36	333.88N	1512.66W	==>	123.73	
6300.00	22.19	282.450	6002.96	342.02N	1549.53W	==>	126.74	
6400.00	22.19	282.450	6095.56	350.16N	1586.40W	==>	129.76	
6500.00	22.19	282.450	6188.16	358.30N	1623.27W	==>	132.77	
6600.00	22.19	282.450	6280.75	366.44N	1660.15W	==>	135.79	
6700.00	22.19	282.450	6373.35	374.57N	1697.02W	==>	138.81	
6800.00	22.19	282.450	6465.95	382.71N	1733.89W	==>	141.82	
6900.00	22.19	282.450	6558.54	390.85N	1770.76W	==>	144.84	
7000.00	22.19	282.450	6651.14	398.99N	1807.64W	==>	147.85	
7100.00	22.19	282.450	6743.74	407.13N	1844.51W	==>	150.87	
7200.00	22.19	282.450	6836.33	415.27N	1881.38W	==>	153.89	End of Hold
7300.00	22.19	282.450	6928.93	423.41N	1918.25W	==>	156.90	
7378.77	22.19	282.450	7001.87	429.82N	1947.30W	==>	159.28	
7400.00	21.88	277.990	7021.55	431.23N	1955.13W	8.00	160.22	
7500.00	22.14	256.550	7114.41	429.44N	1991.98W	8.00	172.72	
7600.00	24.97	237.720	7206.20	413.76N	2028.21W	8.00	198.33	
7700.00	29.64	223.480	7295.13	384.50N	2063.12W	8.00	236.53	
7800.00	35.42	213.160	7379.47	342.23N	2096.04W	8.00	286.59	
7900.00	41.86	205.530	7457.58	287.77N	2126.32W	8.00	347.53	
8000.00	48.69	199.650	7527.94	222.18N	2153.37W	8.00	418.16	
8100.00	55.76	194.910	7589.18	146.74N	2176.67W	8.00	497.11	
8200.00	62.99	190.910	7640.10	62.92N	2195.77W	8.00	582.85	
8300.00	70.31	187.400	7679.72	27.65S	2210.28W	8.00	673.70	
8400.00	77.70	184.200	7707.27	123.21S	2219.93W	8.00	767.90	
8500.00	85.12	181.170	7722.20	221.90S	2224.54W	8.00	863.61	
8566.00	90.02	179.220	7725.00	287.82S	2224.76W	8.00	926.70	
8566.26	90.04	179.210	7725.00	288.07S	2224.76W	8.00	926.95	7.0in Intermediate Casing S/C Kick off Point/Target, HOMESTEAD 5 T1
8600.00	90.04	179.210	7724.97	321.81S	2224.30W	==>	959.07	
8700.00	90.04	179.210	7724.90	421.80S	2222.93W	==>	1054.28	
8800.00	90.04	179.210	7724.82	521.79S	2221.55W	==>	1149.48	
8900.00	90.04	179.210	7724.75	621.78S	2220.18W	==>	1244.69	
9000.00	90.04	179.210	7724.68	721.77S	2218.81W	==>	1339.89	

All data is in Feet unless otherwise stated
Coordinates are from Slot MD's are from Rig and TVD's are from Rig (Planned Datum #1 5161.0ft above Mean Sea Level)
Vertical Section is from 0.00N 0.00E on azimuth 197.030 degrees
Bottom hole distance is 7284.26 Feet on azimuth 197.03 degrees from Wellhead
Calculation method uses Minimum Curvature method
Prepared by Integrated Petroleum Technologies, Inc.
Date Printed: 1-Oct-2015



SYSDRILL
Well Design Combined Report
Wellbore: HOMESTEAD 5 (PWB)

Interpolated Wellpath								
MD[ft]	Inc[deg]	Azi[deg]	TVD[ft]	North[ft]	East[ft]	Dogleg [deg/100ft]	Vertical Section[ft]	All Station Comments
9100.00	90.04	179.210	7724.60	821.77S	2217.44W	==>	1435.10	
9200.00	90.04	179.210	7724.53	921.76S	2216.07W	==>	1530.30	
9300.00	90.04	179.210	7724.45	1021.75S	2214.69W	==>	1625.51	
9400.00	90.04	179.210	7724.38	1121.74S	2213.32W	==>	1720.71	
9500.00	90.04	179.210	7724.30	1221.73S	2211.95W	==>	1815.92	
9600.00	90.04	179.210	7724.23	1321.72S	2210.58W	==>	1911.13	
9700.00	90.04	179.210	7724.15	1421.71S	2209.21W	==>	2006.33	
9800.00	90.04	179.210	7724.08	1521.70S	2207.83W	==>	2101.54	
9900.00	90.04	179.210	7724.00	1621.69S	2206.46W	==>	2196.74	
10000.00	90.04	179.210	7723.93	1721.68S	2205.09W	==>	2291.95	
10100.00	90.04	179.210	7723.85	1821.67S	2203.72W	==>	2387.15	
10200.00	90.04	179.210	7723.78	1921.66S	2202.34W	==>	2482.36	
10300.00	90.04	179.210	7723.70	2021.65S	2200.97W	==>	2577.56	
10400.00	90.04	179.210	7723.63	2121.64S	2199.60W	==>	2672.77	
10500.00	90.04	179.210	7723.55	2221.63S	2198.23W	==>	2767.97	
10600.00	90.04	179.210	7723.48	2321.62S	2196.86W	==>	2863.18	
10700.00	90.04	179.210	7723.40	2421.61S	2195.48W	==>	2958.38	
10800.00	90.04	179.210	7723.33	2521.60S	2194.11W	==>	3053.59	
10900.00	90.04	179.210	7723.25	2621.60S	2192.74W	==>	3148.79	
11000.00	90.04	179.210	7723.18	2721.59S	2191.37W	==>	3244.00	
11100.00	90.04	179.210	7723.10	2821.58S	2190.00W	==>	3339.20	
11200.00	90.04	179.210	7723.03	2921.57S	2188.62W	==>	3434.41	
11300.00	90.04	179.210	7722.95	3021.56S	2187.25W	==>	3529.61	
11400.00	90.04	179.210	7722.88	3121.55S	2185.88W	==>	3624.82	
11500.00	90.04	179.210	7722.80	3221.54S	2184.51W	==>	3720.02	
11600.00	90.04	179.210	7722.73	3321.53S	2183.14W	==>	3815.23	
11700.00	90.04	179.210	7722.65	3421.52S	2181.76W	==>	3910.44	
11800.00	90.04	179.210	7722.58	3521.51S	2180.39W	==>	4005.64	
11900.00	90.04	179.210	7722.50	3621.50S	2179.02W	==>	4100.85	
12000.00	90.04	179.210	7722.43	3721.49S	2177.65W	==>	4196.05	
12100.00	90.04	179.210	7722.35	3821.48S	2176.27W	==>	4291.26	
12200.00	90.04	179.210	7722.28	3921.47S	2174.90W	==>	4386.46	
12300.00	90.04	179.210	7722.20	4021.46S	2173.53W	==>	4481.67	
12400.00	90.04	179.210	7722.13	4121.45S	2172.16W	==>	4576.87	
12500.00	90.04	179.210	7722.05	4221.44S	2170.79W	==>	4672.08	
12600.00	90.04	179.210	7721.98	4321.43S	2169.41W	==>	4767.28	
12700.00	90.04	179.210	7721.90	4421.43S	2168.04W	==>	4862.49	
12800.00	90.04	179.210	7721.83	4521.42S	2166.67W	==>	4957.69	
12900.00	90.04	179.210	7721.75	4621.41S	2165.30W	==>	5052.90	
13000.00	90.04	179.210	7721.68	4721.40S	2163.93W	==>	5148.10	
13100.00	90.04	179.210	7721.61	4821.39S	2162.55W	==>	5243.31	
13200.00	90.04	179.210	7721.53	4921.38S	2161.18W	==>	5338.51	
13300.00	90.04	179.210	7721.46	5021.37S	2159.81W	==>	5433.72	
13400.00	90.04	179.210	7721.38	5121.36S	2158.44W	==>	5528.92	
13500.00	90.04	179.210	7721.31	5221.35S	2157.07W	==>	5624.13	
13600.00	90.04	179.210	7721.23	5321.34S	2155.69W	==>	5719.33	
13700.00	90.04	179.210	7721.16	5421.33S	2154.32W	==>	5814.54	
13800.00	90.04	179.210	7721.08	5521.32S	2152.95W	==>	5909.75	
13900.00	90.04	179.210	7721.01	5621.31S	2151.58W	==>	6004.95	
14000.00	90.04	179.210	7720.93	5721.30S	2150.20W	==>	6100.16	
14100.00	90.04	179.210	7720.86	5821.29S	2148.83W	==>	6195.36	
14200.00	90.04	179.210	7720.78	5921.28S	2147.46W	==>	6290.57	
14300.00	90.04	179.210	7720.71	6021.27S	2146.09W	==>	6385.77	
14400.00	90.04	179.210	7720.63	6121.26S	2144.72W	==>	6480.98	
14500.00	90.04	179.210	7720.56	6221.26S	2143.34W	==>	6576.18	
14600.00	90.04	179.210	7720.48	6321.25S	2141.97W	==>	6671.39	
14700.00	90.04	179.210	7720.41	6421.24S	2140.60W	==>	6766.59	
14800.00	90.04	179.210	7720.33	6521.23S	2139.23W	==>	6861.80	
14900.00	90.04	179.210	7720.26	6621.22S	2137.86W	==>	6957.00	
15000.00	90.04	179.210	7720.18	6721.21S	2136.48W	==>	7052.21	
15100.00	90.04	179.210	7720.11	6821.20S	2135.11W	==>	7147.41	

All data is in Feet unless otherwise stated
Coordinates are from Slot MD's are from Rig and TVD's are from Rig (Planned Datum #1 5161.0ft above Mean Sea Level)
Vertical Section is from 0.00N 0.00E on azimuth 197.030 degrees
Bottom hole distance is 7284.26 Feet on azimuth 197.03 degrees from Wellhead
Calculation method uses Minimum Curvature method
Prepared by Integrated Petroleum Technologies, Inc.
Date Printed: 1-Oct-2015



SYSDRILL
Well Design Combined Report
Wellbore: HOMESTEAD 5 (PWB)

Interpolated Wellpath								
MD[ft]	Inc[deg]	Azi[deg]	TVD[ft]	North[ft]	East[ft]	Dogleg [deg/100ft]	Vertical Section[ft]	All Station Comments
15200.00	90.04	179.210	7720.03	6921.19S	2133.74W	==>	7242.62	
15243.74	90.04	179.210	7720.00	6964.92S	2133.14W	==>	7284.26	End of Hold/Target, 4 1/2in Production Liner, HOMESTEAD 5 BH

All data is in Feet unless otherwise stated
Coordinates are from Slot MD's are from Rig and TVD's are from Rig (Planned Datum #1 5161.0ft above Mean Sea Level)
Vertical Section is from 0.00N 0.00E on azimuth 197.030 degrees
Bottom hole distance is 7284.26 Feet on azimuth 197.03 degrees from Wellhead
Calculation method uses Minimum Curvature method
Prepared by Integrated Petroleum Technologies, Inc.
Date Printed: 1-Oct-2015



SYSDRILL
Well Design Combined Report
Wellbore: HOMESTEAD 5 (PWB)

Hole Sections								
Diameter [in]	Start MD[ft]	Start TVD[ft]	Start North[ft]	Start East[ft]	End MD[ft]	End TVD[ft]	End North[ft]	End East[ft]
13 1/2	23.00	23.00	0.00N	0.00E	1450.00	1450.00	0.00N	0.00E
8 3/4	1450.00	1450.00	0.00N	0.00E	8566.00	7725.00	287.82S	2224.76W
6 1/8	8566.00	7725.00	287.82S	2224.76W	15243.74	7720.00	6964.92S	2133.14W

Casings								
Name	Top MD[ft]	Top TVD[ft]	Top North[ft]	Top East[ft]	Shoe MD[ft]	Shoe TVD[ft]	Shoe North[ft]	Shoe East[ft]
9 5/8in Surface Casing	23.00	23.00	0.00N	0.00E	1450.00	1450.00	0.00N	0.00E
7.0in Intermediate Casing	23.00	23.00	0.00N	0.00E	8566.00	7725.00	287.82S	2224.76W
4 1/2in Production Liner	7444.00	7062.42	432.16N	1971.37W	15243.74	7720.00	6964.92S	2133.14W

Targets							
Name	North[ft]	East[ft]	TVD[ft]	Latitude	Longitude	Northing	Easting
HOMESTEAD 5 BH	6964.92S	2133.14W	7720.00	39.98813000	-104.76687000	1239372.08	3205422.41
HOMESTEAD 5 T1	288.07S	2224.76W	7725.00	40.00646000	-104.76700000	1246048.69	3205330.79

Survey Tool Program					
Reference	Survey Name	MD[ft]	TVD[ft]	Survey Tool	Error Model
400469	Planned	15243.74	7720.00	ISCWSA MWD	Rev 3 + Fixed Rig + Rotating

Notes



SYSDRILL
Closest Approach + Clearance Factor Summary Report
Wellbore: HOMESTEAD 5 (PWB)

Ellipse separations are reported ONLY if BOTH wells have uncertainty data
Only Depth and Magnetic Reference Field error terms are correlated across tie points
Scan limit is calculated on CENTRE to CENTRE distance
Summary data uses Closest Approach clearance calculation for all minima
Hole size/Casings ARE included
Hole size/Casings are NOT subtracted from Centre-Centre distance
Confidence limit of 95.00% / 2.80 SD.

Wellbore		
Name	Created	Last Revised
HOMESTEAD 5 (PWB)	17-Aug-2015	23-Sep-2015

Well		
Name	Government ID	Last Revised
HOMESTEAD 5		17-Aug-2015

Slot						
Name	Latitude	Longitude	Grid Northing	Grid Easting	North	East
HOMESTEAD 5	40.00720000	-104.75905000	1246336.7544	3207555.4725	4.18N	64.40E

Installation						
Name	Installation Position (Latitude)	Installation Position (Longitude)	Easting	Northing	Coord System Name	North Alignment
Homestead	40.00719000	-104.75928000	3207491.0767	1246332.5735	CO83-NF on NORTH AMERICAN DATUM 1983 datum	Grid

Clearance Summary							
Offset WellName	Separation [ft]	MD[ft]	Diverging From[ft]	Ellipse Separation [ft]	Ellipse MD[ft]	Clearance Factor	Clearance MD[ft]
HOMESTEAD 6	14.01	1550.00	8585.99	-31.11	15243.74	0.89	15243.74
HOMESTEAD 4	16.81	1525.00	15243.74	7.31	1550.00	1.09	15243.74
HOMESTEAD 7	30.81	1550.00	8569.59	21.12	1564.99	1.43	15243.74
HOMESTEAD 3	33.62	1499.38	7723.00	24.23	1523.00	1.17	15243.74
HOMESTEAD 8	47.62	1550.00	8569.59	37.93	1564.99	1.55	15243.74
HOMESTEAD 2	50.56	1474.00	15243.74	41.28	1433.76	1.53	15243.74
BERGMAN #2	58.05	14362.47	14362.47	-126.81	14343.87	0.32	14360.27
HOMESTEAD 9	61.63	1550.00	1550.00	51.94	1564.99	2.17	15243.74
HOMESTEAD 1	64.53	1449.00	15243.74	55.17	1449.00	2.18	15243.74
HOMESTEAD 10	78.44	1550.00	8569.59	68.75	1564.99	2.75	15243.74
HOMESTEAD 11	95.25	1550.00	8569.59	85.56	1564.99	3.09	15243.74
HOMESTEAD 12	112.05	1550.00	8585.99	102.37	1564.99	3.67	15243.74
HOMESTEAD 13	319.10	2106.33	15243.74	306.02	2123.00	4.24	15243.74
HOMESTEAD 14	344.76	2007.91	15243.74	332.25	2024.31	4.57	15243.74
HOMESTEAD 15	364.53	1958.70	15243.74	352.36	1975.10	5.09	15243.74
HOMESTEAD 16	386.54	1893.08	15243.74	374.77	1909.48	5.57	15243.74
HOMESTEAD 17	403.39	1564.99	15243.74	393.58	1630.61	5.93	15243.74
HOMESTEAD 18	420.20	1550.00	15243.74	410.53	1564.99	6.43	15243.74
HOMESTEAD 19	437.01	1550.00	15243.74	427.33	1564.99	6.90	15243.74
HOMESTEAD 20	453.82	1550.00	15243.74	444.13	1564.99	7.28	15243.74
HOMESTEAD 21	467.82	1532.19	15243.74	458.18	1564.99	7.77	15243.74
HOMESTEAD 22	484.63	1499.38	15243.74	475.17	1532.19	8.25	15243.74
HOMESTEAD 23	501.44	1482.97	15243.74	492.14	1515.78	8.63	15243.74

All data is in Feet unless otherwise stated
Coordinates are from Slot MD's are from Rig and TVD's are from Rig (Planned Datum #1 5161.0ft above Mean Sea Level)
Vertical Section is from 0.00N 0.00E on azimuth 197.030 degrees
Prepared by Integrated Petroleum Technologies, Inc.
Date Printed: 1-Oct-2015

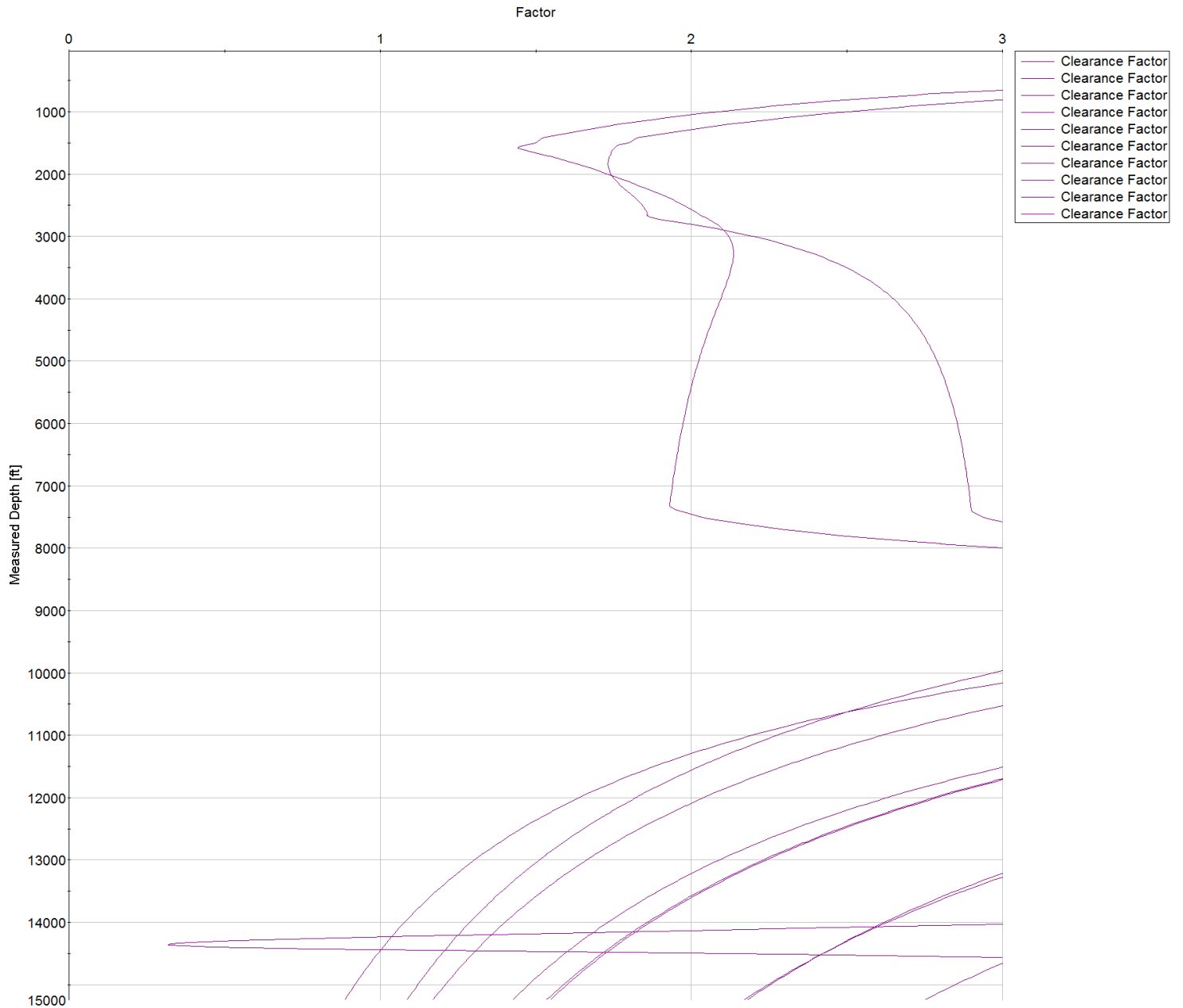


SYSDRILL
Closest Approach + Clearance Factor Summary Report
Wellbore: HOMESTEAD 5 (PWB)

Clearance Summary							
Offset WellName	Separation [ft]	MD[ft]	Diverging From[ft]	Ellipse Separation [ft]	Ellipse MD[ft]	Clearance Factor	Clearance MD[ft]
HOMESTEAD 24	515.45	1457.00	15243.74	506.20	1433.76	9.11	15243.74
WILLARD, JOHN W. GAS UNIT #1	1113.18	3353.05	3353.05	1079.64	3451.48	25.22	5190.32
VISTA USX #WW33-08D	2449.94	8093.87	8093.87	2384.09	8110.27	32.60	9471.82
UPRR 50 PAN AM M #1	2829.78	1550.00	9750.69	2813.37	1564.99	53.56	11965.26
BEN STEVENSON GAS UNIT #1	3203.84	15243.74	15243.74	3011.71	15243.74	16.68	15243.74
BERGMAN #1	3337.25	1550.00	11444.12	3261.33	11473.13	29.77	12080.09
BRIGHTON COMPANY #1	5712.11	14083.36	14083.36	5537.97	14179.82	30.83	15243.74
SHAW A #1	6778.94	15243.74	15243.74	6590.23	15243.74	35.92	15243.74



SYSDRILL
Closest Approach + Clearance Factor Summary Report
Wellbore: HOMESTEAD 5 (PWB)





SYSDRILL
Closest Approach + Clearance Factor Summary Report
Wellbore: HOMESTEAD 5 (PWB)



All data is in Feet unless otherwise stated
Coordinates are from Slot MD's are from Rig and TVD's are from Rig (Planned Datum #1 5161.0ft above Mean Sea Level)
Vertical Section is from 0.00N 0.00E on azimuth 197.030 degrees
Prepared by Integrated Petroleum Technologies, Inc.
Date Printed: 1-Oct-2015

