



# Kerr-McGee Oil & Gas Onshore LP

A subsidiary of Anadarko Petroleum Corporation

1099 18<sup>th</sup> Street  
Denver, CO 80202  
720-929-6000

February 23, 2017

Matt Lepore  
Director, Colorado Oil and Gas Conservation Commission  
Department of Natural Resources  
The Chancery Building  
1120 Lincoln Street, Suite 801  
Denver, CO 80203

Re: **30 Day Certification Letter - 318A.e**  
SWARTZ 2N-25HZ (API # 05-123-42685)  
Township 2 North, Range 65 West  
Section 13: SW/4SE/4  
Unit Acreage: 480  
Unit Spacing: 02N-65W-Sec 13 SE/4SW/4; SW/4SE/4  
02N-65W-Sec 24 E/2W/2; W/2E/2  
02N-65W-Sec 25 NE/4NW/4; NW/4NE/4  
Weld County, Colorado

Dear Director Lepore:

Kerr-McGee Oil and Gas Onshore LP ("KMG") hereby certifies that a thirty (30) day notice has been given by certified mail to all mineral owners in the proposed wellbore spacing unit. We have not received any objections to such well location, proposed spacing unit, or additional producing formation. KMG hereby respectfully requests approval of this boundary well.

If you have any questions or issues regarding this permit, please contact Cheryl Light at (720) 929-6461.

Very truly yours,

**KERR-McGEE OIL AND GAS ONSHORE LP**

A handwritten signature in blue ink that reads 'Cheryl Light'.

Cheryl Light  
Senior Regulatory Analyst

# WELL LOCATION CERTIFICATE: SWARTZ 2N-25HZ

## SECTION 13, TOWNSHIP 2 NORTH, RANGE 65 WEST, 6TH P.M.

NW COR. SEC. 13  
2" ALUM. CAP  
PLS 25937, 1996

S 89°36'41" E 2594.89'

S 89°36'50" E 2594.45'

NE COR. SEC. 13  
3/4" ALUM. CAP  
PLS 23520, 2002

N 1/4 COR. SEC. 13  
2" ALUM. CAP  
PLS 25937, 1996

(BASIS OF BEARINGS) SEE NOTE 2

SURFACE LOCATION  
GROUND ELEVATION= 4878'  
NAD83 STATE PLANE CO N  
LATITUDE= 40.132087°  
LONGITUDE= -104.610794°

LATITUDE= 40°07'55.514"  
LONGITUDE= -104°36'38.859°

HEEL LOCATION  
NAD83 STATE PLANE CO N  
LATITUDE= 40.132922°  
LONGITUDE= -104.611581°

LATITUDE= 40°07'58.518"  
LONGITUDE= -104°36'41.690°

NOTES:  
BH AND HEEL  
LOCATIONS PROVIDED BY CLIENT.  
SEE ATTACHED MAP FOR ADDITIONAL  
IMPROVEMENTS WITHIN 500'.

PDOP= 1.5  
GPS OPERATOR: BEN HARDENBERGH

W 1/4 COR. SEC. 13  
3/4" ALUM. CAP  
PLS 10855, 1998

S 89°55'24" E 2605.94'

S 89°49'20" E 2602.73'

E 1/4 COR. SEC. 13  
3/4" ALUM. CAP  
PLS 27269, 2004

BOTTOM HOLE LOCATION  
NAD83 STATE PLANE CO N  
LATITUDE= 40.114347°  
LONGITUDE= -104.610967°

LATITUDE= 40°06'51.649"  
LONGITUDE= -104°36'39.481°

C 1/4 COR. SEC. 13  
3/4" ALUM. CAP  
PLS 24307, 2006

SW COR. SEC. 13  
2 1/2" ALUM. CAP  
PLS 34980, 2007

S 89°57'07" W 2609.78'

S 89°57'07" W 2609.78'

SE COR. SEC. 13  
3/4" ALUM. CAP  
PLS 27269, 1998

S 1/4 COR. SEC. 13  
2 1/2" ALUM. CAP  
PLS 38345, 2013

BH-866' FNL  
2295' FEL

S 02°01'37" E 6769'  
(TRUE S 01°27'11" E)

HEEL- 636' FSL  
2415' FEL  
N 36°27'12" W 375'  
(TRUE N 35°52'43" W)

SWARTZ 2N-25HZ

2195'

### LEGEND

- = EXISTING MONUMENT    ♦ = BOTTOM HOLE  
 ● = PROPOSED WELL    ▲ = HEEL LOCATION  
 BH = BOTTOM HOLE    ○ = CALCULATED POSITION

WELL SWARTZ 2N-25HZ TO BE LOCATED 334' FSL AND 2195' FEL

0 500 1000

SCALE: 1"= 1000'

### NOTES:

- THIS FIELD SURVEY CONFORMS TO THE MINIMUM STANDARDS SET BY THE C.O.G.C.C., RULE NO. 215
- BEARINGS ARE BASED ON THE ASSUMPTION THAT THE NORTH LINE OF THE NORTHEAST QUARTER OF SECTION 13, BEARS S89°36'50"E BETWEEN THE MONUMENTS DESCRIBED HEREON.
- GRID DISTANCES ARE SHOWN, AS MEASURED IN THE FIELD, WITH TIES TO WELLS MEASURED PERPENDICULAR TO SECTION LINES. TO GET GROUND DISTANCES MULTIPLY THE SHOWN DISTANCE BY 1.000272228.
- ALL LINES SHOWN THAT ARE WITHOUT DIMENSION SHOULD BE CONSIDERED SCALED AND ONLY REPRESENT A GRAPHICAL DEPICTION OF THE APPROXIMATE LOCATION OF SAID LINE.
- CERTIFIED ON AUGUST 4, 2015 FOR WELLS STAKED ON JANUARY 5, 2015. THIRD REVISION DECEMBER 30, 2015 FOR HEEL AND BHL CHANGES.

SHEET 1 OF 3

I, JACOB S. FRISCH, A LICENSED PROFESSIONAL LAND SURVEYOR IN THE STATE OF COLORADO DO HEREBY CERTIFY TO **KERR-MCGEE OIL & GAS ONSHORE LP**, THAT THE SURVEY AND WELL LOCATION CERTIFICATE SHOWN HEREON WERE DONE BY ME OR UNDER MY DIRECT SUPERVISION AND THAT THE DRAWING SHOWN HEREON ACCURATELY DEPICTS THE PROPOSED LOCATION OF THE WELL. THIS CERTIFICATE DOES NOT REPRESENT A LAND SURVEY PLAT OR IMPROVEMENT SURVEY PLAT AS DEFINED BY C.R.S. 38-51-102 AND CANNOT BE RELIED UPON TO DETERMINE OWNERSHIP.



NOTICE: ACCORDING TO COLORADO LAW YOU MUST COMMENCE ANY LEGAL ACTION BASED UPON ANY DEFECT IN THIS SURVEY WITHIN THREE YEARS AFTER YOU FIRST DISCOVER SUCH DEFECT. IN NO EVENT MAY ANY ACTION BASED UPON ANY DEFECT IN THIS SURVEY BE COMMENCED MORE THAN TEN YEARS FROM THIS SAID DATE OF THIS CERTIFICATION SHOWN HEREON.

PREPARED BY:  
**PFS**  
Petroleum Field Services, LLC  
7535 Hilltop Circle  
Denver, CO 80221

FIELD DATE:

01-05-15

DRAWING DATE:

12-09-16

BY:

BMO

CHECKED:

CSG

SURFACE LOCATION:

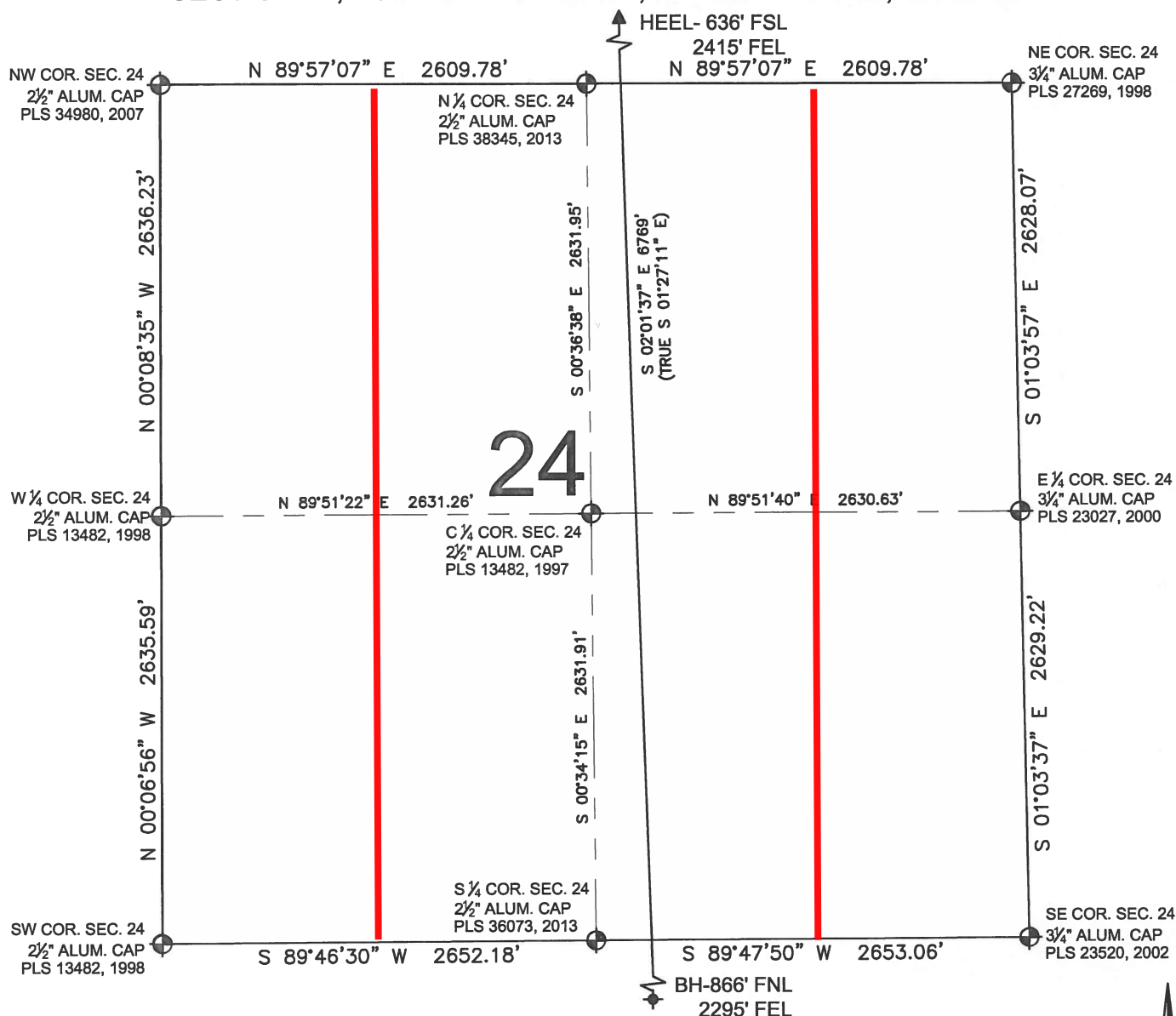
SW 1/4 SE 1/4,

SEC. 13, T2N, R65W, 6TH P.M.

WELD COUNTY, COLORADO

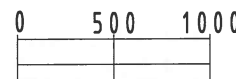
# WELL LOCATION CERTIFICATE: SWARTZ 2N-25HZ

SECTION 24, TOWNSHIP 2 NORTH, RANGE 65 WEST, 6TH P.M.



## LEGEND

- = EXISTING MONUMENT
- = PROPOSED WELL
- BH = BOTTOM HOLE
- ◆ = BOTTOM HOLE
- ▲ = HEEL LOCATION
- = CALCULATED POSITION



## NOTES:

- THIS FIELD SURVEY CONFORMS TO THE MINIMUM STANDARDS SET BY THE C.O.G.C.C., RULE NO. 215
- BEARINGS ARE BASED ON THE ASSUMPTION THAT THE NORTH LINE OF THE NORTHEAST QUARTER OF SECTION 13, BEARS S89°36'50"E BETWEEN THE MONUMENTS DESCRIBED HEREON.
- GRID DISTANCES ARE SHOWN, AS MEASURED IN THE FIELD, WITH TIES TO WELLS MEASURED PERPENDICULAR TO SECTION LINES. TO GET GROUND DISTANCES MULTIPLY THE SHOWN DISTANCE BY 1.000272228.
- ALL LINES SHOWN THAT ARE WITHOUT DIMENSION SHOULD BE CONSIDERED SCALED AND ONLY REPRESENT A GRAPHICAL DEPICTION OF THE APPROXIMATE LOCATION OF SAID LINE.
- CERTIFIED ON AUGUST 4, 2015 FOR WELLS STAKED ON JANUARY 5, 2015. THIRD REVISION DECEMBER 30, 2015 FOR HEEL AND BHL CHANGES.

SHEET 2 OF 3

PREPARED BY:



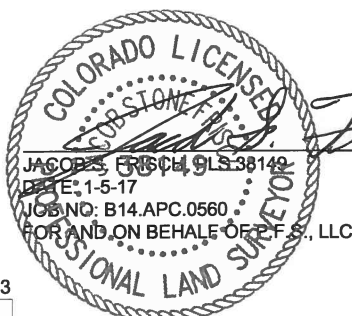
FIELD DATE:  
01-05-15

DRAWING DATE:  
12-09-16

BY: BMO  
CHECKED: CSG

SURFACE LOCATION:

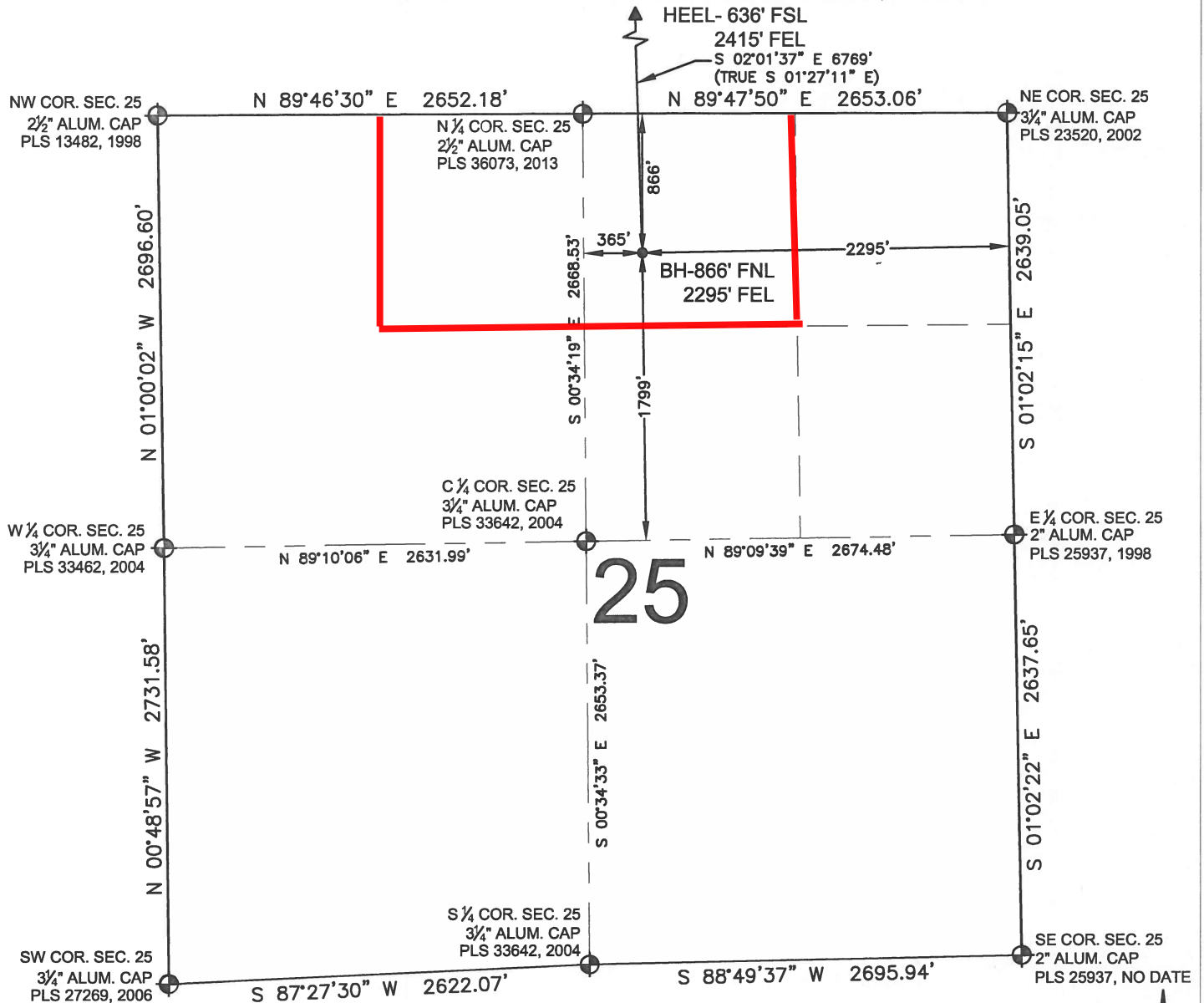
SW 1/4 SE 1/4,  
SEC. 13, T2N, R65W, 6TH P.M.  
WELD COUNTY, COLORADO



NOTICE: ACCORDING TO COLORADO LAW YOU MUST COMMENCE ANY LEGAL ACTION BASED UPON ANY DEFECT IN THIS SURVEY WITHIN THREE YEARS AFTER YOU FIRST DISCOVER SUCH DEFECT. IN NO EVENT MAY ANY ACTION BASED UPON ANY DEFECT IN THIS SURVEY BE COMMENCED MORE THAN TEN YEARS FROM THIS SAID DATE OF THIS CERTIFICATION SHOWN HEREON.

# WELL LOCATION CERTIFICATE: SWARTZ 2N-25HZ

SECTION 25, TOWNSHIP 2 NORTH, RANGE 65 WEST, 6TH P.M.



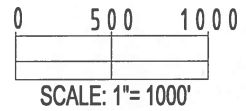
## NOTES:

1. THIS FIELD SURVEY CONFORMS TO THE MINIMUM STANDARDS SET BY THE C.O.G.C.C., RULE NO. 215
2. BEARINGS ARE BASED ON THE ASSUMPTION THAT THE NORTH LINE OF THE NORTHEAST QUARTER OF SECTION 13, BEARS S89°36'50"E BETWEEN THE MONUMENTS DESCRIBED HEREON.
3. GRID DISTANCES ARE SHOWN, AS MEASURED IN THE FIELD, WITH TIES TO WELLS MEASURED PERPENDICULAR TO SECTION LINES. TO GET GROUND DISTANCES MULTIPLY THE SHOWN DISTANCE BY 1.000272228.
4. ALL LINES SHOWN THAT ARE WITHOUT DIMENSION SHOULD BE CONSIDERED SCALED AND ONLY REPRESENT A GRAPHICAL DEPICTION OF THE APPROXIMATE LOCATION OF SAID LINE.
5. CERTIFIED ON AUGUST 4, 2015 FOR WELLS STAKED ON JANUARY 5, 2015. THIRD REVISION DECEMBER 30, 2015 FOR HEEL AND BHL CHANGES.

SHEET 3 OF 3

## LEGEND

- = EXISTING MONUMENT
- = PROPOSED WELL
- BH = BOTTOM HOLE
- ◆ = BOTTOM HOLE
- ▲ = HEEL LOCATION
- = CALCULATED POSITION



PREPARED BY



FIELD DATE:  
01-05-15

DRAWING DATE:  
12-09-16

BY: BMO  
CHECKED: CSG

SURFACE LOCATION:

SW 1/4 SE 1/4,  
SEC. 13, T2N, R65W, 6TH P.M.  
WELD COUNTY, COLORADO

NOTICE: ACCORDING TO COLORADO LAW YOU MUST COMMENCE ANY LEGAL ACTION BASED UPON ANY DEFECT IN THIS SURVEY WITHIN THREE YEARS AFTER YOU FIRST DISCOVER SUCH DEFECT. IN NO EVENT MAY ANY ACTION BASED UPON ANY DEFECT IN THIS SURVEY BE COMMENCED MORE THAN TEN YEARS FROM THIS SAID DATE OF THIS CERTIFICATION SHOWN HEREON.