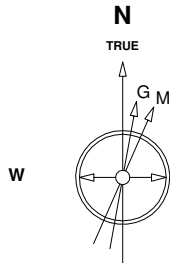


# Great Western Operating Company, LLC

Location	Colorado	Slot	Slot W05 - Kodak South FD 25-241HC
Field	Wattenburg	Well	Kodak South FD 25-241HC
Installation	Kodak South	Wellbore	Kodak South FD 25-241HC (PWB)

Created by	admin
Date plotted	15-Feb-2017
Plot reference is Kodak South FD 25-241HC (PWB).	
Ref wellpath is Kodak South FD 25-241HC (PWP#1).	
Coordinates are in Feet reference Slot W05 - Kodak South FD 25-241HC.	
True Vertical Depths are reference Rig Datum.	
Measured Depths are reference Rig Datum.	
Rig Datum: Planned Datum #1	
Rig Datum to Mean Sea Level: 4762.60 ft.	
Plot North is aligned to TRUE North.	



Scale 1 cm = 400 ft

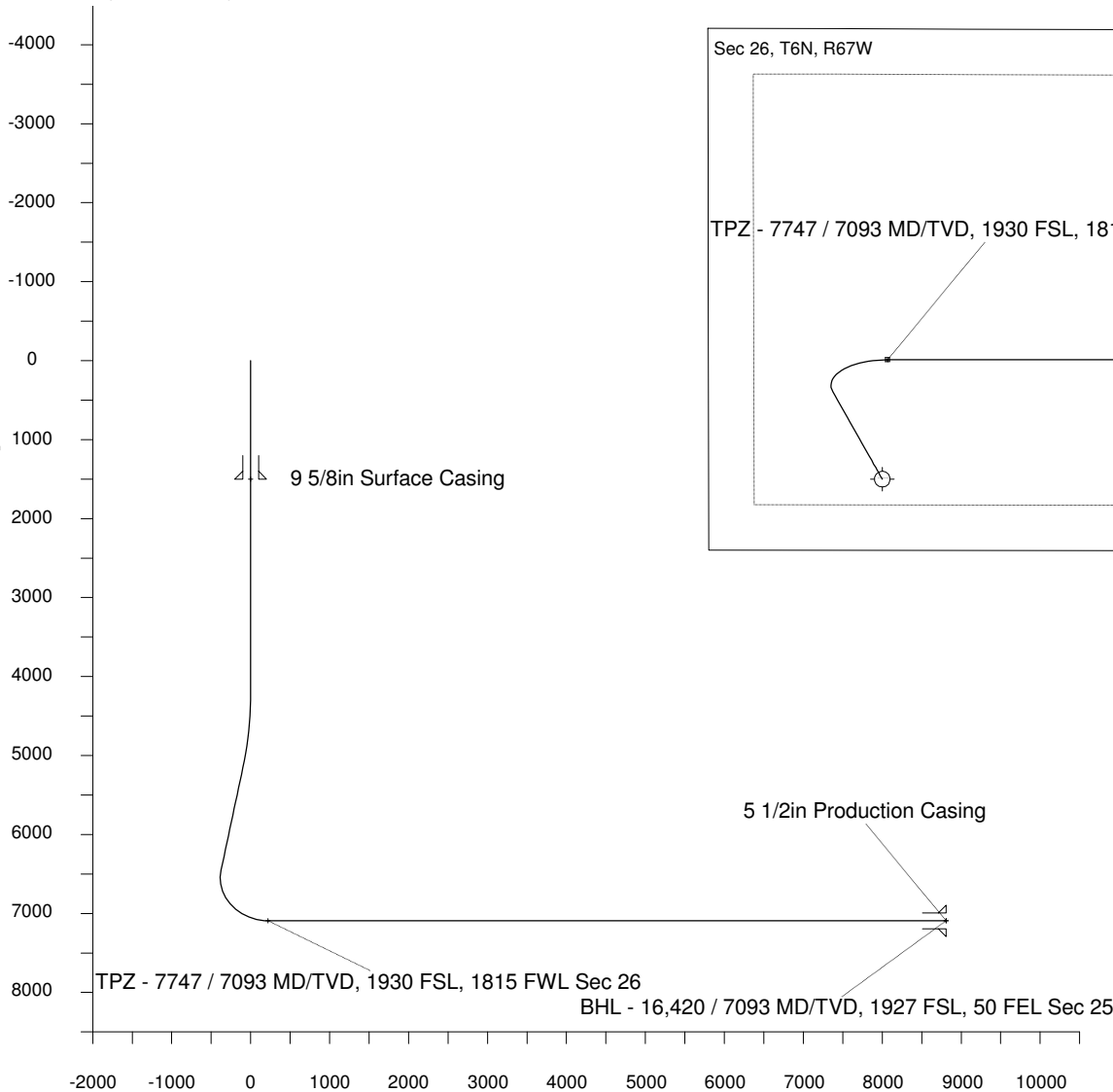
East (Feet) ->

-5600 -4800 -4000 -3200 -2400 -1600 -800 0 800 1600 2400 3200 4000 4800 5600 6400 7200 8000 8800 9600

15-Jul-2016  
IGRF Model [1900.0-2020.0] Dip: 66.91 deg Field: 52519.4 nT  
Lat: N40 27 32.4396 Long: W104 51 49.7592 Elev: 4742.60 ft  
Magnetic North is 8.37 deg East of TRUE North  
To correct azimuth from Magnetic to TRUE add 8.37 deg

Scale 1 cm = 500 ft

<- True Vertical Depth (Feet)



Scale 1 cm = 500 ft

Vertical Section (Feet) ->

Azimuth 82.11 with reference 0.00 N, 0.00 E from Slot W05 - Kodak South FD 25-241HC

<- North(Feet)

Scale 1 cm = 400 ft

## WELL PROFILE DATA

Point	MD	Inc	Azi	TVD	North	East	deg/100ft	V. Sect
Tie on	0.00	0.00	0.00	0.00	S 0.00	W 0.00		0.00
KOP	4177.00	0.00	330.51	4177.00	S 0.00	W 0.00	0.00	0.00
End of Build	5177.09	30.00	330.51	5132.01	N 222.75	W 126.00	9.84	-94.22
End of Hold	6704.88	30.00	330.51	6455.07	N 887.70	W 502.13	0.00	-375.46
Target TPZ - ...Sec 26	7747.36	90.00	89.99	7093.00	N 1208.43	E 53.15	32.81	218.61
T.D. & Target BHL... 25	16420.38	90.00	89.99	7093.00	N 1209.84	E 8726.17	0.00	8809.64