

EXTRACTION OIL & GAS

Weld County

Sec 21-T5N-R65W

AD-DOUBLE CLUTCH 1-20-24

ORIGINAL WELLBORE

Plan: PROPOSAL #1

Standard Planning Report

09 February, 2017



Project: Weld County
Site: Sec 21-T5N-R65W
Well: AD-DOUBLE CLUTCH 1-20-24
Wellbore: ORIGINAL WELLBORE
Design: PROPOSAL #1



Azimuths to True North
Magnetic North: 8.28°
Magnetic Field
Strength: 52516.5nT
Dip Angle: 66.88°
Date: 5/22/2016
Model: IGRF2015

WELL DETAILS: AD-DOUBLE CLUTCH 1-20-24

+N/-S	+E/-W	Northing	Ground Level:	4638.0	Easting	Latitude	Longitude	Slot
0.0	0.0	1383498.20	3229412.46	40° 22' 59.448 N	104° 40' 35.328 W			

SECTION DETAILS

Sec	MD	Inc	Azi	TVD	+N/-S	+E/-W	Dleg	TFace	VSect	Target
1	0.0	0.00	0.00	0.0	0.0	0.0	0.00	0.00	0.0	
2	1700.0	0.00	0.00	1700.0	0.0	0.0	0.00	0.00	0.0	
3	2199.0	9.98	341.06	2196.5	41.0	-14.1	2.00	341.06	16.9	
4	6545.4	9.98	341.06	6477.1	753.5	-258.6	0.00	0.00	310.2	
5	7412.6	90.00	270.32	7010.0	845.2	-830.1	10.00	-71.00	886.7	HZ LANDING PNT -
6	19742.3	90.00	270.32	7010.0	914.3	-13159.6	0.00	0.00	13191.3	BHL - AD-DOUBLE

ANNOTATIONS

MD	Inc	Azi	TVD	+N/-S	+E/-W	VSect	Departure	Annotation
1700.0	0.00	0.00	1700.0	0.0	0.0	0.0	0.0	Build 2°/100'
2199.0	9.98	341.06	2196.5	41.0	-14.1	16.9	43.4	Hold 9.98° Inc
6545.4	9.98	341.06	6477.1	753.5	-258.6	310.2	796.6	KOP, Build 10°/100'
7412.6	90.00	270.32	7010.0	845.2	-830.1	886.7	1385.2	LP @ 90° Inc, 270.32° Azm Hold
19742.3	90.00	270.32	7010.0	914.3	-13159.6	13191.3	13714.9	TD at 19742.3' MD

DESIGN TARGET DETAILS

Name	TVD	+N/-S	+E/-W	Northing	Easting	Latitude	Longitude	Shape
BHL - AD-DOUBLE CLUTCH 1-20-24	7010.0	914.3	-13159.6	1384290.20	3216244.93	40° 23' 8.448 N	104° 43' 25.392 W	Point
HZ LANDING PNT - AD-DOUBLE CLUTCH 1-20-24	7010.0	914.3	-830.1	1384335.64	3228574.51	40° 23' 7.800 N	104° 40' 46.056 W	Point

FORMATION TOP DETAILS

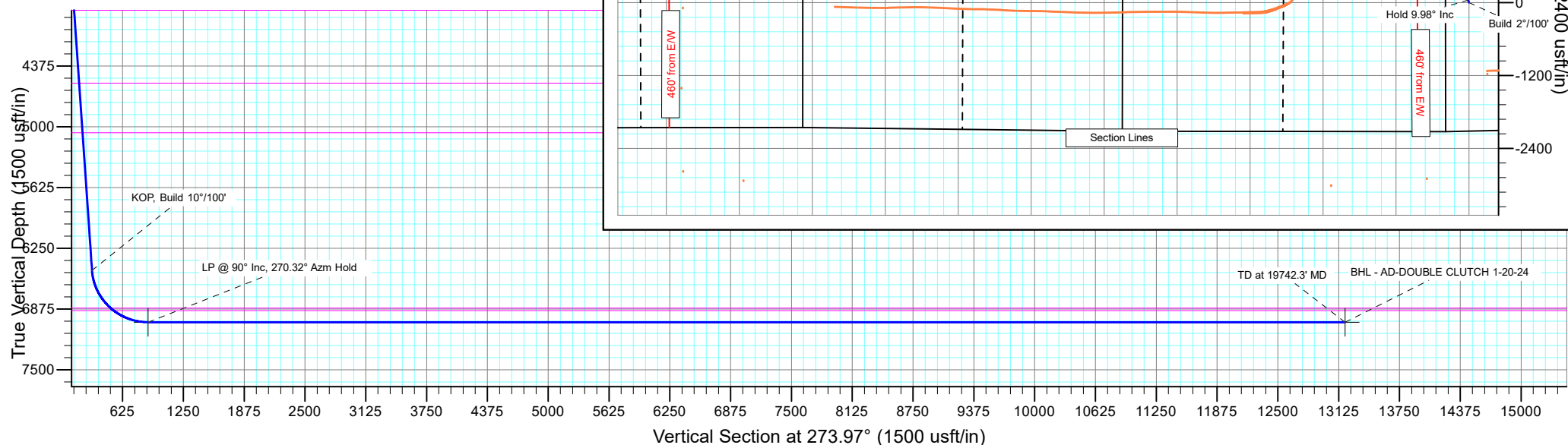
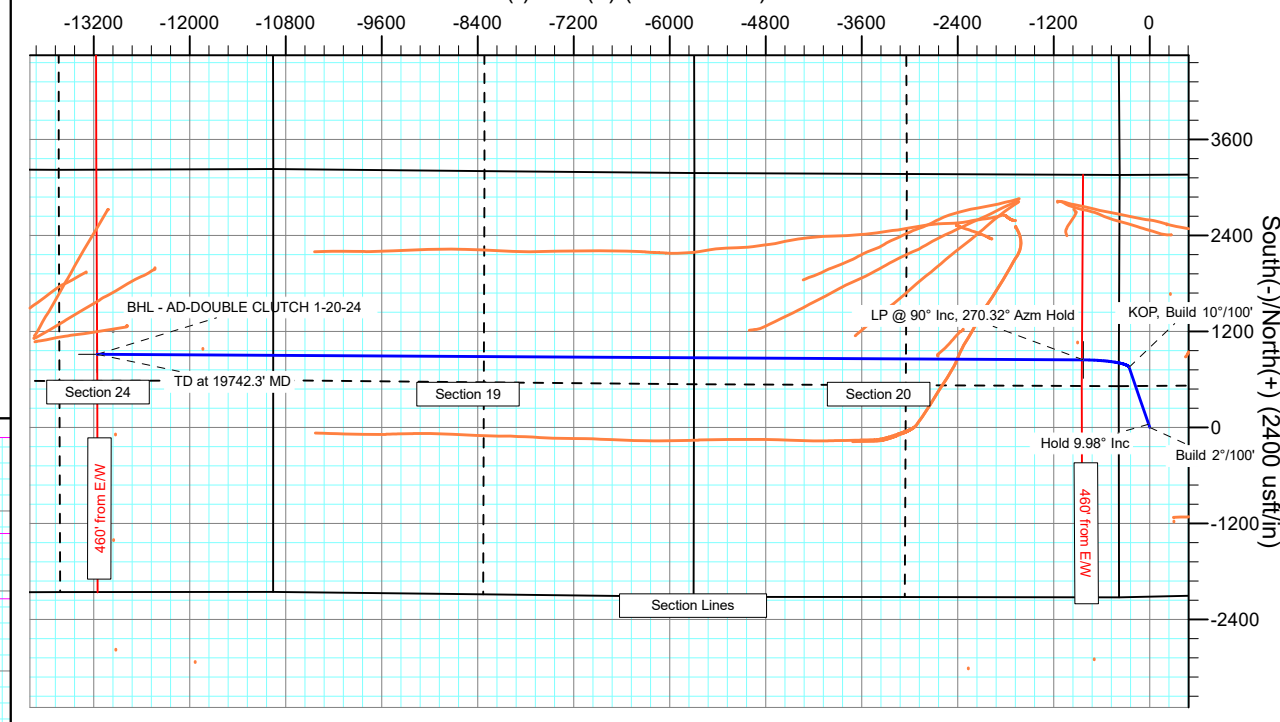
TVDPath	MDPath	Formation
3800.0	3827.2	PARKMAN
4550.0	4588.7	SUSSEX
5060.0	5106.5	SHANNON
6865.0	6992.9	SHARON SPRINGS
6890.0	7032.3	NIOBRARA

PROJECT DETAILS: Weld County

Geodetic System: US State Plane 1983
Datum: North American Datum 1983
Ellipsoid: GRS 1980
Zone: Colorado Northern Zone
System Datum: Mean Sea Level

SHL:
370' FWL, 2116' FSL
Sec 21-T5N-R65W
LP:
2314' FNL, 460' FEL
Sec 20-T5N-R65W
BHL:
2307' FNL, 2216' FEL
Sec 24-T5N-R66W

West(-)/East(+) (2400 usft/in)



Planning Report

Database:	EDT_32Bit_ODBC	Local Co-ordinate Reference:	Well AD-DOUBLE CLUTCH 1-20-24
Company:	EXTRACTION OIL & GAS	TVD Reference:	KB-EST @ 4654.0usft (Original Well Elev)
Project:	Weld County	MD Reference:	KB-EST @ 4654.0usft (Original Well Elev)
Site:	Sec 21-T5N-R65W	North Reference:	True
Well:	AD-DOUBLE CLUTCH 1-20-24	Survey Calculation Method:	Minimum Curvature
Wellbore:	ORIGINAL WELLBORE		
Design:	PROPOSAL #1		

Project	Weld County		
Map System:	US State Plane 1983	System Datum:	Mean Sea Level
Geo Datum:	North American Datum 1983		
Map Zone:	Colorado Northern Zone		

Site		Sec 21-T5N-R65W			
Site Position:		Northing:	1,383,619.20 usft	Latitude:	40° 23' 0.636 N
From:	Lat/Long	Easting:	3,229,494.91 usft	Longitude:	104° 40' 34.248 W
Position Uncertainty:	0.0 usft	Slot Radius:	13.200 in	Grid Convergence:	0.53 °

Well	AD-DOUBLE CLUTCH 1-20-24					
Well Position	+N/-S	-120.2 usft	Northing:	1,383,498.20 usft	Latitude:	40° 22' 59.448 N
	+E/-W	-83.6 usft	Easting:	3,229,412.46 usft	Longitude:	104° 40' 35.328 W
Position Uncertainty		0.0 usft	Wellhead Elevation:		Ground Level:	4,638.0 usft

Wellbore	ORIGINAL WELLBORE				
Magnetics	Model Name	Sample Date	Declination (°)	Dip Angle (°)	Field Strength (nT)
	IGRF2015	5/22/2016	8.28	66.88	52,516.45178884

Design	PROPOSAL #1			
Audit Notes:				
Version:	Phase:	PROTOTYPE	Tie On Depth:	0.0
Vertical Section:	Depth From (TVD) (usft)	+N/-S (usft)	+E/-W (usft)	Direction (°)
	0.0	0.0	0.0	0.00

Plan Survey Tool Program			Date	2/9/2017	
Depth From (usft)	Depth To (usft)	Survey (Wellbore)	Tool Name	Remarks	
1	0.0	19,742.3	PROPOSAL #1 (ORIGINAL WEL	MWD	
			OWSG MWD - Standard		

Plan Sections										
Measured Depth (usft)	Inclination (°)	Azimuth (°)	Vertical Depth (usft)	+N/-S (usft)	+E/-W (usft)	Dogleg Rate (°/100ft)	Build Rate (°/100ft)	Turn Rate (°/100ft)	TFO (°)	Target
0.0	0.00	0.00	0.0	0.0	0.0	0.00	0.00	0.00	0.00	
1,700.0	0.00	0.00	1,700.0	0.0	0.0	0.00	0.00	0.00	0.00	
2,199.0	9.98	341.06	2,196.5	41.0	-14.1	2.00	2.00	0.00	341.06	
6,545.4	9.98	341.06	6,477.1	753.5	-258.6	0.00	0.00	0.00	0.00	
7,412.6	90.00	270.32	7,010.0	845.2	-830.1	10.00	9.23	-8.16	-71.00	HZ LANDING PNT - /
19,742.3	90.00	270.32	7,010.0	914.3	-13,159.6	0.00	0.00	0.00	0.00	BHL - AD-DOUBLE C

Planning Report

Database:	EDT_32Bit_ODBC	Local Co-ordinate Reference:	Well AD-DOUBLE CLUTCH 1-20-24
Company:	EXTRACTION OIL & GAS	TVD Reference:	KB-EST @ 4654.0usft (Original Well Elev)
Project:	Weld County	MD Reference:	KB-EST @ 4654.0usft (Original Well Elev)
Site:	Sec 21-T5N-R65W	North Reference:	True
Well:	AD-DOUBLE CLUTCH 1-20-24	Survey Calculation Method:	Minimum Curvature
Wellbore:	ORIGINAL WELLBORE		
Design:	PROPOSAL #1		

Planned Survey									
Measured Depth (usft)	Inclination (°)	Azimuth (°)	Vertical Depth (usft)	+N/-S (usft)	+E/-W (usft)	Vertical Section (usft)	Dogleg Rate (°/100ft)	Build Rate (°/100ft)	Turn Rate (°/100ft)
0.0	0.00	0.00	0.0	0.0	0.0	0.0	0.00	0.00	0.00
100.0	0.00	0.00	100.0	0.0	0.0	0.0	0.00	0.00	0.00
200.0	0.00	0.00	200.0	0.0	0.0	0.0	0.00	0.00	0.00
300.0	0.00	0.00	300.0	0.0	0.0	0.0	0.00	0.00	0.00
400.0	0.00	0.00	400.0	0.0	0.0	0.0	0.00	0.00	0.00
500.0	0.00	0.00	500.0	0.0	0.0	0.0	0.00	0.00	0.00
600.0	0.00	0.00	600.0	0.0	0.0	0.0	0.00	0.00	0.00
700.0	0.00	0.00	700.0	0.0	0.0	0.0	0.00	0.00	0.00
800.0	0.00	0.00	800.0	0.0	0.0	0.0	0.00	0.00	0.00
900.0	0.00	0.00	900.0	0.0	0.0	0.0	0.00	0.00	0.00
1,000.0	0.00	0.00	1,000.0	0.0	0.0	0.0	0.00	0.00	0.00
1,100.0	0.00	0.00	1,100.0	0.0	0.0	0.0	0.00	0.00	0.00
1,200.0	0.00	0.00	1,200.0	0.0	0.0	0.0	0.00	0.00	0.00
1,300.0	0.00	0.00	1,300.0	0.0	0.0	0.0	0.00	0.00	0.00
1,400.0	0.00	0.00	1,400.0	0.0	0.0	0.0	0.00	0.00	0.00
1,500.0	0.00	0.00	1,500.0	0.0	0.0	0.0	0.00	0.00	0.00
1,600.0	0.00	0.00	1,600.0	0.0	0.0	0.0	0.00	0.00	0.00
1,700.0	0.00	0.00	1,700.0	0.0	0.0	0.0	0.00	0.00	0.00
Build 2°/100'									
1,800.0	2.00	341.06	1,800.0	1.7	-0.6	1.7	2.00	2.00	0.00
1,900.0	4.00	341.06	1,899.8	6.6	-2.3	6.6	2.00	2.00	0.00
2,000.0	6.00	341.06	1,999.5	14.8	-5.1	14.8	2.00	2.00	0.00
2,100.0	8.00	341.06	2,098.7	26.4	-9.1	26.4	2.00	2.00	0.00
2,199.0	9.98	341.06	2,196.5	41.0	-14.1	41.0	2.00	2.00	0.00
Hold 9.98° Inc									
2,300.0	9.98	341.06	2,296.0	57.6	-19.8	57.6	0.00	0.00	0.00
2,400.0	9.98	341.06	2,394.4	73.9	-25.4	73.9	0.00	0.00	0.00
2,500.0	9.98	341.06	2,492.9	90.3	-31.0	90.3	0.00	0.00	0.00
2,600.0	9.98	341.06	2,591.4	106.7	-36.6	106.7	0.00	0.00	0.00
2,700.0	9.98	341.06	2,689.9	123.1	-42.3	123.1	0.00	0.00	0.00
2,800.0	9.98	341.06	2,788.4	139.5	-47.9	139.5	0.00	0.00	0.00
2,900.0	9.98	341.06	2,886.9	155.9	-53.5	155.9	0.00	0.00	0.00
3,000.0	9.98	341.06	2,985.4	172.3	-59.1	172.3	0.00	0.00	0.00
3,100.0	9.98	341.06	3,083.8	188.7	-64.8	188.7	0.00	0.00	0.00
3,200.0	9.98	341.06	3,182.3	205.1	-70.4	205.1	0.00	0.00	0.00
3,300.0	9.98	341.06	3,280.8	221.5	-76.0	221.5	0.00	0.00	0.00
3,400.0	9.98	341.06	3,379.3	237.9	-81.6	237.9	0.00	0.00	0.00
3,500.0	9.98	341.06	3,477.8	254.3	-87.3	254.3	0.00	0.00	0.00
3,600.0	9.98	341.06	3,576.3	270.7	-92.9	270.7	0.00	0.00	0.00
3,700.0	9.98	341.06	3,674.8	287.0	-98.5	287.0	0.00	0.00	0.00
3,800.0	9.98	341.06	3,773.3	303.4	-104.2	303.4	0.00	0.00	0.00
3,827.2	9.98	341.06	3,800.0	307.9	-105.7	307.9	0.00	0.00	0.00
PARKMAN									
3,900.0	9.98	341.06	3,871.7	319.8	-109.8	319.8	0.00	0.00	0.00
4,000.0	9.98	341.06	3,970.2	336.2	-115.4	336.2	0.00	0.00	0.00
4,100.0	9.98	341.06	4,068.7	352.6	-121.0	352.6	0.00	0.00	0.00
4,200.0	9.98	341.06	4,167.2	369.0	-126.7	369.0	0.00	0.00	0.00
4,300.0	9.98	341.06	4,265.7	385.4	-132.3	385.4	0.00	0.00	0.00
4,400.0	9.98	341.06	4,364.2	401.8	-137.9	401.8	0.00	0.00	0.00
4,500.0	9.98	341.06	4,462.7	418.2	-143.5	418.2	0.00	0.00	0.00
4,588.7	9.98	341.06	4,550.0	432.7	-148.5	432.7	0.00	0.00	0.00
SUSSEX									
4,600.0	9.98	341.06	4,561.1	434.6	-149.2	434.6	0.00	0.00	0.00

Planning Report

Database:	EDT_32Bit_ODBC	Local Co-ordinate Reference:	Well AD-DOUBLE CLUTCH 1-20-24
Company:	EXTRACTION OIL & GAS	TVD Reference:	KB-EST @ 4654.0usft (Original Well Elev)
Project:	Weld County	MD Reference:	KB-EST @ 4654.0usft (Original Well Elev)
Site:	Sec 21-T5N-R65W	North Reference:	True
Well:	AD-DOUBLE CLUTCH 1-20-24	Survey Calculation Method:	Minimum Curvature
Wellbore:	ORIGINAL WELLBORE		
Design:	PROPOSAL #1		

Planned Survey									
Measured Depth (usft)	Inclination (°)	Azimuth (°)	Vertical Depth (usft)	+N/-S (usft)	+E/-W (usft)	Vertical Section (usft)	Dogleg Rate (°/100ft)	Build Rate (°/100ft)	Turn Rate (°/100ft)
4,700.0	9.98	341.06	4,659.6	451.0	-154.8	451.0	0.00	0.00	0.00
4,800.0	9.98	341.06	4,758.1	467.4	-160.4	467.4	0.00	0.00	0.00
4,900.0	9.98	341.06	4,856.6	483.7	-166.0	483.7	0.00	0.00	0.00
5,000.0	9.98	341.06	4,955.1	500.1	-171.7	500.1	0.00	0.00	0.00
5,100.0	9.98	341.06	5,053.6	516.5	-177.3	516.5	0.00	0.00	0.00
5,106.5	9.98	341.06	5,060.0	517.6	-177.7	517.6	0.00	0.00	0.00
SHANNON									
5,200.0	9.98	341.06	5,152.1	532.9	-182.9	532.9	0.00	0.00	0.00
5,300.0	9.98	341.06	5,250.6	549.3	-188.6	549.3	0.00	0.00	0.00
5,400.0	9.98	341.06	5,349.0	565.7	-194.2	565.7	0.00	0.00	0.00
5,500.0	9.98	341.06	5,447.5	582.1	-199.8	582.1	0.00	0.00	0.00
5,600.0	9.98	341.06	5,546.0	598.5	-205.4	598.5	0.00	0.00	0.00
5,700.0	9.98	341.06	5,644.5	614.9	-211.1	614.9	0.00	0.00	0.00
5,800.0	9.98	341.06	5,743.0	631.3	-216.7	631.3	0.00	0.00	0.00
5,900.0	9.98	341.06	5,841.5	647.7	-222.3	647.7	0.00	0.00	0.00
6,000.0	9.98	341.06	5,940.0	664.1	-227.9	664.1	0.00	0.00	0.00
6,100.0	9.98	341.06	6,038.4	680.5	-233.6	680.5	0.00	0.00	0.00
6,200.0	9.98	341.06	6,136.9	696.8	-239.2	696.8	0.00	0.00	0.00
6,300.0	9.98	341.06	6,235.4	713.2	-244.8	713.2	0.00	0.00	0.00
6,400.0	9.98	341.06	6,333.9	729.6	-250.4	729.6	0.00	0.00	0.00
6,500.0	9.98	341.06	6,432.4	746.0	-256.1	746.0	0.00	0.00	0.00
6,545.4	9.98	341.06	6,477.1	753.5	-258.6	753.5	0.00	0.00	0.00
KOP, Build 10°/100'									
6,550.0	10.14	338.58	6,481.6	754.2	-258.9	754.2	10.00	3.46	-53.73
6,600.0	12.83	317.15	6,530.7	762.4	-264.3	762.4	10.00	5.38	-42.86
6,650.0	16.61	304.15	6,579.0	770.5	-274.0	770.5	10.00	7.56	-26.00
6,700.0	20.90	296.10	6,626.4	778.4	-287.9	778.4	10.00	8.58	-16.10
6,750.0	25.44	290.76	6,672.3	786.2	-306.0	786.2	10.00	9.08	-10.69
6,800.0	30.12	286.96	6,716.5	793.6	-328.0	793.6	10.00	9.36	-7.60
6,850.0	34.88	284.11	6,758.7	800.8	-353.9	800.8	10.00	9.52	-5.71
6,900.0	39.69	281.87	6,798.5	807.5	-383.4	807.5	10.00	9.63	-4.48
6,950.0	44.54	280.04	6,835.6	813.9	-416.3	813.9	10.00	9.70	-3.65
6,992.9	48.72	278.71	6,865.0	819.0	-447.1	819.0	10.00	9.74	-3.11
SHARON SPRINGS									
7,000.0	49.41	278.50	6,869.7	819.8	-452.4	819.8	10.00	9.76	-2.87
7,032.3	52.57	277.62	6,890.0	823.3	-477.3	823.3	10.00	9.77	-2.72
NIOBRARA									
7,050.0	54.30	277.18	6,900.5	825.1	-491.4	825.1	10.00	9.79	-2.54
7,100.0	59.21	276.00	6,927.9	829.9	-532.9	829.9	10.00	9.81	-2.35
7,150.0	64.12	274.94	6,951.7	834.1	-576.7	834.1	10.00	9.82	-2.12
7,200.0	69.04	273.97	6,971.5	837.6	-622.4	837.6	10.00	9.84	-1.95
7,250.0	73.96	273.06	6,987.4	840.5	-669.7	840.5	10.00	9.85	-1.82
7,300.0	78.89	272.19	6,999.1	842.8	-718.3	842.8	10.00	9.86	-1.74
7,350.0	83.82	271.35	7,006.6	844.3	-767.7	844.3	10.00	9.86	-1.68
7,400.0	88.76	270.53	7,009.9	845.1	-817.5	845.1	10.00	9.86	-1.65
7,412.6	90.00	270.32	7,010.0	845.2	-830.1	845.2	10.00	9.86	-1.64
LP @ 90° Inc, 270.32° Azm Hold									
7,500.0	90.00	270.32	7,010.0	845.7	-917.5	845.7	0.00	0.00	0.00
7,600.0	90.00	270.32	7,010.0	846.2	-1,017.5	846.2	0.00	0.00	0.00
7,700.0	90.00	270.32	7,010.0	846.8	-1,117.5	846.8	0.00	0.00	0.00
7,800.0	90.00	270.32	7,010.0	847.4	-1,217.5	847.4	0.00	0.00	0.00
7,900.0	90.00	270.32	7,010.0	847.9	-1,317.5	847.9	0.00	0.00	0.00
8,000.0	90.00	270.32	7,010.0	848.5	-1,417.5	848.5	0.00	0.00	0.00

Planning Report

Database:	EDT_32Bit_ODBC	Local Co-ordinate Reference:	Well AD-DOUBLE CLUTCH 1-20-24
Company:	EXTRACTION OIL & GAS	TVD Reference:	KB-EST @ 4654.0usft (Original Well Elev)
Project:	Weld County	MD Reference:	KB-EST @ 4654.0usft (Original Well Elev)
Site:	Sec 21-T5N-R65W	North Reference:	True
Well:	AD-DOUBLE CLUTCH 1-20-24	Survey Calculation Method:	Minimum Curvature
Wellbore:	ORIGINAL WELLBORE		
Design:	PROPOSAL #1		

Planned Survey										
Measured Depth (usft)	Inclination (°)	Azimuth (°)	Vertical Depth (usft)	+N/-S (usft)	+E/-W (usft)	Vertical Section (usft)	Dogleg Rate (°/100ft)	Build Rate (°/100ft)	Turn Rate (°/100ft)	
8,100.0	90.00	270.32	7,010.0	849.0	-1,517.5	849.0	0.00	0.00	0.00	
8,200.0	90.00	270.32	7,010.0	849.6	-1,617.5	849.6	0.00	0.00	0.00	
8,300.0	90.00	270.32	7,010.0	850.2	-1,717.5	850.2	0.00	0.00	0.00	
8,400.0	90.00	270.32	7,010.0	850.7	-1,817.5	850.7	0.00	0.00	0.00	
8,500.0	90.00	270.32	7,010.0	851.3	-1,917.5	851.3	0.00	0.00	0.00	
8,600.0	90.00	270.32	7,010.0	851.8	-2,017.5	851.8	0.00	0.00	0.00	
8,700.0	90.00	270.32	7,010.0	852.4	-2,117.5	852.4	0.00	0.00	0.00	
8,800.0	90.00	270.32	7,010.0	853.0	-2,217.5	853.0	0.00	0.00	0.00	
8,900.0	90.00	270.32	7,010.0	853.5	-2,317.5	853.5	0.00	0.00	0.00	
9,000.0	90.00	270.32	7,010.0	854.1	-2,417.5	854.1	0.00	0.00	0.00	
9,100.0	90.00	270.32	7,010.0	854.6	-2,517.5	854.6	0.00	0.00	0.00	
9,200.0	90.00	270.32	7,010.0	855.2	-2,617.5	855.2	0.00	0.00	0.00	
9,300.0	90.00	270.32	7,010.0	855.8	-2,717.5	855.8	0.00	0.00	0.00	
9,400.0	90.00	270.32	7,010.0	856.3	-2,817.5	856.3	0.00	0.00	0.00	
9,500.0	90.00	270.32	7,010.0	856.9	-2,917.5	856.9	0.00	0.00	0.00	
9,600.0	90.00	270.32	7,010.0	857.4	-3,017.5	857.4	0.00	0.00	0.00	
9,700.0	90.00	270.32	7,010.0	858.0	-3,117.5	858.0	0.00	0.00	0.00	
9,800.0	90.00	270.32	7,010.0	858.6	-3,217.5	858.6	0.00	0.00	0.00	
9,900.0	90.00	270.32	7,010.0	859.1	-3,317.5	859.1	0.00	0.00	0.00	
10,000.0	90.00	270.32	7,010.0	859.7	-3,417.5	859.7	0.00	0.00	0.00	
10,100.0	90.00	270.32	7,010.0	860.3	-3,517.5	860.3	0.00	0.00	0.00	
10,200.0	90.00	270.32	7,010.0	860.8	-3,617.5	860.8	0.00	0.00	0.00	
10,300.0	90.00	270.32	7,010.0	861.4	-3,717.5	861.4	0.00	0.00	0.00	
10,400.0	90.00	270.32	7,010.0	861.9	-3,817.5	861.9	0.00	0.00	0.00	
10,500.0	90.00	270.32	7,010.0	862.5	-3,917.5	862.5	0.00	0.00	0.00	
10,600.0	90.00	270.32	7,010.0	863.1	-4,017.5	863.1	0.00	0.00	0.00	
10,700.0	90.00	270.32	7,010.0	863.6	-4,117.5	863.6	0.00	0.00	0.00	
10,800.0	90.00	270.32	7,010.0	864.2	-4,217.5	864.2	0.00	0.00	0.00	
10,900.0	90.00	270.32	7,010.0	864.7	-4,317.5	864.7	0.00	0.00	0.00	
11,000.0	90.00	270.32	7,010.0	865.3	-4,417.5	865.3	0.00	0.00	0.00	
11,100.0	90.00	270.32	7,010.0	865.9	-4,517.5	865.9	0.00	0.00	0.00	
11,200.0	90.00	270.32	7,010.0	866.4	-4,617.5	866.4	0.00	0.00	0.00	
11,300.0	90.00	270.32	7,010.0	867.0	-4,717.5	867.0	0.00	0.00	0.00	
11,400.0	90.00	270.32	7,010.0	867.5	-4,817.5	867.5	0.00	0.00	0.00	
11,500.0	90.00	270.32	7,010.0	868.1	-4,917.5	868.1	0.00	0.00	0.00	
11,600.0	90.00	270.32	7,010.0	868.7	-5,017.5	868.7	0.00	0.00	0.00	
11,700.0	90.00	270.32	7,010.0	869.2	-5,117.5	869.2	0.00	0.00	0.00	
11,800.0	90.00	270.32	7,010.0	869.8	-5,217.5	869.8	0.00	0.00	0.00	
11,900.0	90.00	270.32	7,010.0	870.3	-5,317.5	870.3	0.00	0.00	0.00	
12,000.0	90.00	270.32	7,010.0	870.9	-5,417.4	870.9	0.00	0.00	0.00	
12,100.0	90.00	270.32	7,010.0	871.5	-5,517.4	871.5	0.00	0.00	0.00	
12,200.0	90.00	270.32	7,010.0	872.0	-5,617.4	872.0	0.00	0.00	0.00	
12,300.0	90.00	270.32	7,010.0	872.6	-5,717.4	872.6	0.00	0.00	0.00	
12,400.0	90.00	270.32	7,010.0	873.1	-5,817.4	873.1	0.00	0.00	0.00	
12,500.0	90.00	270.32	7,010.0	873.7	-5,917.4	873.7	0.00	0.00	0.00	
12,600.0	90.00	270.32	7,010.0	874.3	-6,017.4	874.3	0.00	0.00	0.00	
12,700.0	90.00	270.32	7,010.0	874.8	-6,117.4	874.8	0.00	0.00	0.00	
19,742.3	90.00	270.32	7,010.0	914.3	-13,159.6	914.3	0.00	0.00	0.00	
TD at 19742.3' MD										

Planning Report

Database:	EDT_32Bit_ODBC	Local Co-ordinate Reference:	Well AD-DOUBLE CLUTCH 1-20-24
Company:	EXTRACTION OIL & GAS	TVD Reference:	KB-EST @ 4654.0usft (Original Well Elev)
Project:	Weld County	MD Reference:	KB-EST @ 4654.0usft (Original Well Elev)
Site:	Sec 21-T5N-R65W	North Reference:	True
Well:	AD-DOUBLE CLUTCH 1-20-24	Survey Calculation Method:	Minimum Curvature
Wellbore:	ORIGINAL WELLBORE		
Design:	PROPOSAL #1		

Formations					
Measured Depth (usft)	Vertical Depth (usft)	Name	Lithology	Dip (°)	Dip Direction (°)
3,827.2	3,800.0	PARKMAN			
4,588.7	4,550.0	SUSSEX			
5,106.5	5,060.0	SHANNON			
6,992.9	6,865.0	SHARON SPRINGS			
7,032.3	6,890.0	NIOBRARA			

Plan Annotations				
Measured Depth (usft)	Vertical Depth (usft)	Local Coordinates		Comment
		+N/-S (usft)	+E/-W (usft)	
1,700.0	1,700.0	0.0	0.0	Build 2°/100'
2,199.0	2,196.5	41.0	-14.1	Hold 9.98° Inc
6,545.4	6,477.1	753.5	-258.6	KOP, Build 10°/100'
7,412.6	7,010.0	845.2	-830.1	LP @ 90° Inc, 270.32° Azm Hold
19,742.3	7,010.0	914.3	-13,159.6	TD at 19742.3' MD