



# Kerr-McGee Oil & Gas Onshore LP

A subsidiary of Anadarko Petroleum Corporation

1099 18<sup>th</sup> Street  
Denver, CO 80202  
720-929-6000

February 7, 2017

Matt Lepore  
Director, Colorado Oil and Gas Conservation Commission  
Department of Natural Resources  
The Chancery Building  
1120 Lincoln Street, Suite 801  
Denver, CO 80203

Re: **30 Day Certification Letter - 318A.e**  
RW 4N-5HZ (Doc No. 401203288)  
Township 3 North, Range 65 West  
Section 29: SESW  
Unit Acreage: 240 acres  
Unit Spacing: 03N65W Sec 29: SWSW  
03N65W Sec 32: W2W2  
02N65W Sec 5: NWNW  
Weld County, Colorado

Dear Director Lepore:

Kerr McGee Oil and Gas Onshore LP ("KMG") hereby certifies that KMG owns one hundred percent (100%) of the leasehold interest in the mineral rights in the proposed spacing unit. KMG hereby respectfully requests approval of this boundary well.

If you have any questions or issues regarding this permit, please contact our office.

Sincerely,

**Kerr-McGee Oil and Gas Onshore LP**

A handwritten signature in black ink, reading "Shayelyn Marshall".

Shayelyn Marshall  
Regulatory Analyst I

Enclosure

# PROPOSED SPACING UNIT

## T3N, R65W

N. 1/4 COR.  
SEC. 29, T3N, R65W  
FOUND 3 1/4" ALUM. CAP  
L.S. NO. 33642

NW. COR.  
SEC. 29, T3N, R65W  
FOUND 3 1/4" ALUM. CAP  
W.C. 30' WEST  
OF TRUE CORNER  
P.L.S. NO. 10855

NE. COR.  
SEC. 29, T3N, R65W  
FOUND 2 1/2" ALUM. CAP  
L.S. NO. 23501

SURFACE LOCATION: NAD 83  
GROUND ELEVATION= 4887.3'  
LATITUDE= 40.190391°  
LONGITUDE= -104.690733°  
HEEL LOCATION: NAD 83  
LATITUDE= 40.11'25.409"  
LONGITUDE= -104.41'26.638"  
BOTTOM HOLE LOCATION: NAD 83  
LATITUDE= 40.173667°  
LONGITUDE= -104.694293°  
LATITUDE= 40°11'28.536"  
LONGITUDE= -104°41'39.455"  
LATITUDE= 40°10'25.201"  
LONGITUDE= -104°41'39.138"

W. 1/4 COR.  
SEC. 29, T3N, R65W  
FOUND 3 1/4" ALUM. CAP  
W.C. 30' WEST  
OF TRUE CORNER  
P.L.S. NO. 10855

E. 1/4 COR.  
SEC. 29, T3N, R65W  
FOUND 2 1/2" ALUM. CAP  
L.S. NO. 30120

S. 1/16 COR.  
SEC. 29 & SEC. 30,  
T3N, R65W  
FOUND 3 1/4" ALUM. CAP  
L.S. NO. 38285

SW. COR.  
SEC. 29, T3N, R65W  
FOUND 2 1/2" ALUM. CAP  
P.L.S. NO. 20671

S. 1/4 COR.  
SEC. 29, T3N, R65W  
FOUND 3 1/4" ALUM. CAP  
ILLEGIBLE

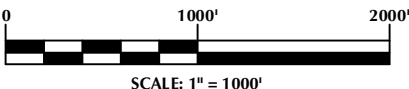
SE. COR.  
SEC. 29, T3N, R65W  
FOUND 2 1/2" ALUM. CAP  
L.S. NO. 23501

### CERTIFICATE OF SURVEYOR:

THIS IS TO CERTIFY THAT THE ABOVE PLAT WAS PREPARED FROM FIELD NOTES OF ACTUAL SURVEY MADE BY ME OR UNDER MY SUPERVISION AND THAT THE SAME ARE TRUE AND CORRECT TO THE BEST OF MY KNOWLEDGE AND BELIEF. THIS CERTIFICATE DOES NOT REPRESENT A LAND SURVEY PLAT OR IMPROVEMENT SURVEY PLAT AS DEFINED BY C.R.S. 38-51-302 AND CANNOT BE RELIED UPON TO DETERMINE OWNERSHIP.

*Randall K. French*  
PROFESSIONAL LAND SURVEYOR  
COLORADO REGISTRATION NUMBER 38512

NOTICE:  
ACCORDING TO COLORADO STATE LAW YOU MUST COMMENCE ANY LEGAL ACTION BASED UPON ANY DEFECT IN THIS SURVEY WITHIN THREE YEARS AFTER YOU FIRST DISCOVER SUCH DEFECT. IN NO EVENT MAY ANY ACTION BASED UPON ANY DEFECT IN THIS SURVEY BE COMMENCED MORE THAN TEN YEARS FROM THE DATE ON THE CERTIFICATION SHOWN HEREON.



NOTE:  
MAGNETIC NORTH IS CURRENT AS OF 12/2/2016.  
MAGNETIC NORTH CHANGES WEST 0°06' PER YEAR.

### NOTES:

- ▲ INDICATES SECTION CORNER
- INDICATES CALCULATED CORNER
- ELEVATION BASED ON NAVD88 (GEOID12B)
- BASIS OF BEARING DERIVED FROM COLORADO COORDINATE SYSTEM OF 1983 NORTH ZONE.
- ALL MEASURED DISTANCES ARE GRID.
- COMBINED SCALE FACTOR: .99972501 CALCULATED FROM THE W. 1/4 CORNER OF SECTION 29, T3N, R65W
- OPERATOR: ROB WILSON / PDOP = 1.3
- SEE ADDENDUM TO WELL LOCATION CERTIFICATE FOR EXISTING IMPROVEMENTS WITHIN 500' OF THE WELL PAD.
- WELL FOOTAGES ARE MEASURED AT RIGHT ANGLES TO THE SECTION LINES.
- THE BOTTOM OF HOLE BEARS S00°44'26"E, 6409' FROM THE HEEL LOCATION.

### WELL PAD - RW 29N-5HZ

RW 4N-5HZ  
LOCATION CERTIFICATE  
441' FSL & 1674' FWL SESW (SURFACE)  
756' FSL & 680' FWL SWSW (HEEL)  
LOCATED IN SECTION 29  
T3N, R65W, 6TH P.M.  
366' FNL & 747' FWL NWNW (BOTTOM)  
LOCATED IN SECTION 5  
T2N, R65W, 6TH P.M.  
WELD COUNTY, COLORADO

**Kerr-McGee Oil &  
Gas Onshore L.P.**  
1099 18th Street  
Denver, Colorado 80202



### CONSULTING, LLC

SHERIDAN OFFICE  
1095 Saberton Avenue  
Sheridan, Wyoming 82801  
Phone 307-674-0609

LOVELAND OFFICE  
1635 Foxtrail Drive, Suite 204  
Loveland, Colorado 80538  
Phone 970-776-4331

DRAFTED BY:	LMO	CHECKED BY:	RKF	SHEET NO:
DATE DRAFTED:	1/23/17	DATE SURVEYED:	12/1/16	1
REVISED:		FILE NAME:	16-147	1 OF 3

# PROPOSED SPACING UNIT

## T3N, R65W

N. 1/4 COR.  
SEC. 32, T3N, R65W  
FOUND 3 1/4" ALUM. CAP  
ILLEGIBLE

MATCH LINE  
SEE SHEET 1

NW. COR.  
SEC. 32, T3N, R65W  
FOUND 2 1/2" ALUM. CAP  
P.L.S. NO. 20671

NE. COR.  
SEC. 32, T3N, R65W  
FOUND 2 1/2" ALUM. CAP  
L.S. NO. 23501

N. 1/16 COR.  
SEC. 31 & SEC. 32  
T3N, R65W  
FOUND 2 1/2" ALUM. CAP  
P.L.S. NO. 24307

W. 1/4 COR.  
SEC. 32, T3N, R65W  
FOUND 3 1/4" ALUM. CAP  
L.S. NO. 12330

CW. 1/16 COR.  
SEC. 32, T3N, R65W  
FOUND 2 1/2" ALUM. CAP  
P.L.S. NO. 24307

CENTER 1/4 COR.  
SEC. 32, T3N, R65W  
FOUND 2" ALUM. CAP  
P.L.S. NO. 29413

SW. COR.  
SEC. 32, T3N, R65W  
FOUND 2 1/2" ALUM. CAP  
ILLEGIBLE

E. 1/4 COR.  
SEC. 32, T3N, R65W  
FOUND 2 1/2" ALUM. CAP  
L.S. NO. 38175

SE. COR.  
SEC. 32, T3N, R65W  
FOUND 2 1/2" ALUM. CAP  
L.S. NO. 23501

WELLBORE  
CONTINUES INTO  
SECTION 5, T2N, R65W

S. 1/4 COR.  
SEC. 32, T3N, R65W  
FOUND 2" ALUM. CAP  
P.L.S. NO. 29413

MATCH LINE  
SEE SHEET 3

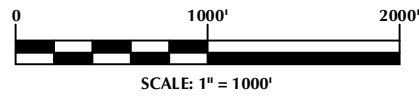
SURFACE LOCATION: NAD 83  
GROUND ELEVATION= 4887.3'  
LATITUDE= 40.190391°  
LONGITUDE= -104.690733°  
LATITUDE= 40°11'25.409"  
LONGITUDE= -104°41'26.638"  
HEEL LOCATION: NAD 83  
LATITUDE= 40.191260°  
LONGITUDE= -104.694293°  
LATITUDE= 40°11'28.536"  
LONGITUDE= -104°41'39.455"  
BOTTOM HOLE LOCATION: NAD 83  
LATITUDE= 40.173667°  
LONGITUDE= -104.694205°  
LATITUDE= 40°10'25.201"  
LONGITUDE= -104°41'39.138"

### CERTIFICATE OF SURVEYOR:

THIS IS TO CERTIFY THAT THE ABOVE PLAT WAS PREPARED FROM FIELD NOTES OF ACTUAL SURVEY MADE BY ME OR UNDER MY SUPERVISION AND THAT THE SAME ARE TRUE AND CORRECT TO THE BEST OF MY KNOWLEDGE AND BELIEF. THIS CERTIFICATE DOES NOT REPRESENT A LAND SURVEY PLAT OR IMPROVEMENT SURVEY PLAT AS DEFINED BY C.R.S. 38-51-302 AND CANNOT BE RELIED UPON TO DETERMINE OWNERSHIP.

*Randall K. French*  
PROFESSIONAL LAND SURVEYOR  
COLORADO REGISTRATION NUMBER 38512

NOTICE:  
ACCORDING TO COLORADO STATE LAW YOU MUST COMMENCE ANY LEGAL ACTION BASED UPON ANY DEFECT IN THIS SURVEY WITHIN THREE YEARS AFTER YOU FIRST DISCOVER SUCH DEFECT. IN NO EVENT MAY ANY ACTION BASED UPON ANY DEFECT IN THIS SURVEY BE COMMENCED MORE THAN TEN YEARS FROM THE DATE ON THE CERTIFICATION SHOWN HEREON.



NOTE:  
MAGNETIC NORTH IS CURRENT AS OF 12/2/2016.  
MAGNETIC NORTH CHANGES WEST 0°06' PER YEAR.

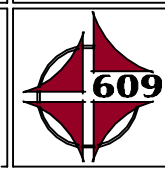
### NOTES:

- ▲ INDICATES SECTION CORNER
- INDICATES CALCULATED CORNER
- ELEVATION BASED ON NAVD88 (GEOID12B)
- BASIS OF BEARING DERIVED FROM COLORADO COORDINATE SYSTEM OF 1983 NORTH ZONE.
- ALL MEASURED DISTANCES ARE GRID.
- COMBINED SCALE FACTOR: .99972501 CALCULATED FROM THE W. 1/4 CORNER OF SECTION 29, T3N, R65W
- OPERATOR: ROB WILSON / PDOP = 1.3
- SEE ADDENDUM TO WELL LOCATION CERTIFICATE FOR EXISTING IMPROVEMENTS WITHIN 500' OF THE WELL PAD.
- WELL FOOTAGES ARE MEASURED AT RIGHT ANGLES TO THE SECTION LINES.
- THE BOTTOM OF HOLE BEARS S00°44'26"E, 6409' FROM THE HEEL LOCATION.

### WELL PAD - RW 29N-5HZ

RW 4N-5HZ  
LOCATION CERTIFICATE  
441' FSL & 1674' FWL SESW (SURFACE)  
756' FSL & 680' FWL SWSW (HEEL)  
LOCATED IN SECTION 29  
T3N, R65W, 6TH P.M.  
366' FNL & 747' FWL NWNW (BOTTOM)  
LOCATED IN SECTION 5  
T2N, R65W, 6TH P.M.  
WELD COUNTY, COLORADO

**Kerr-McGee Oil &  
Gas Onshore L.P.**  
1099 18th Street  
Denver, Colorado 80202



### CONSULTING, LLC

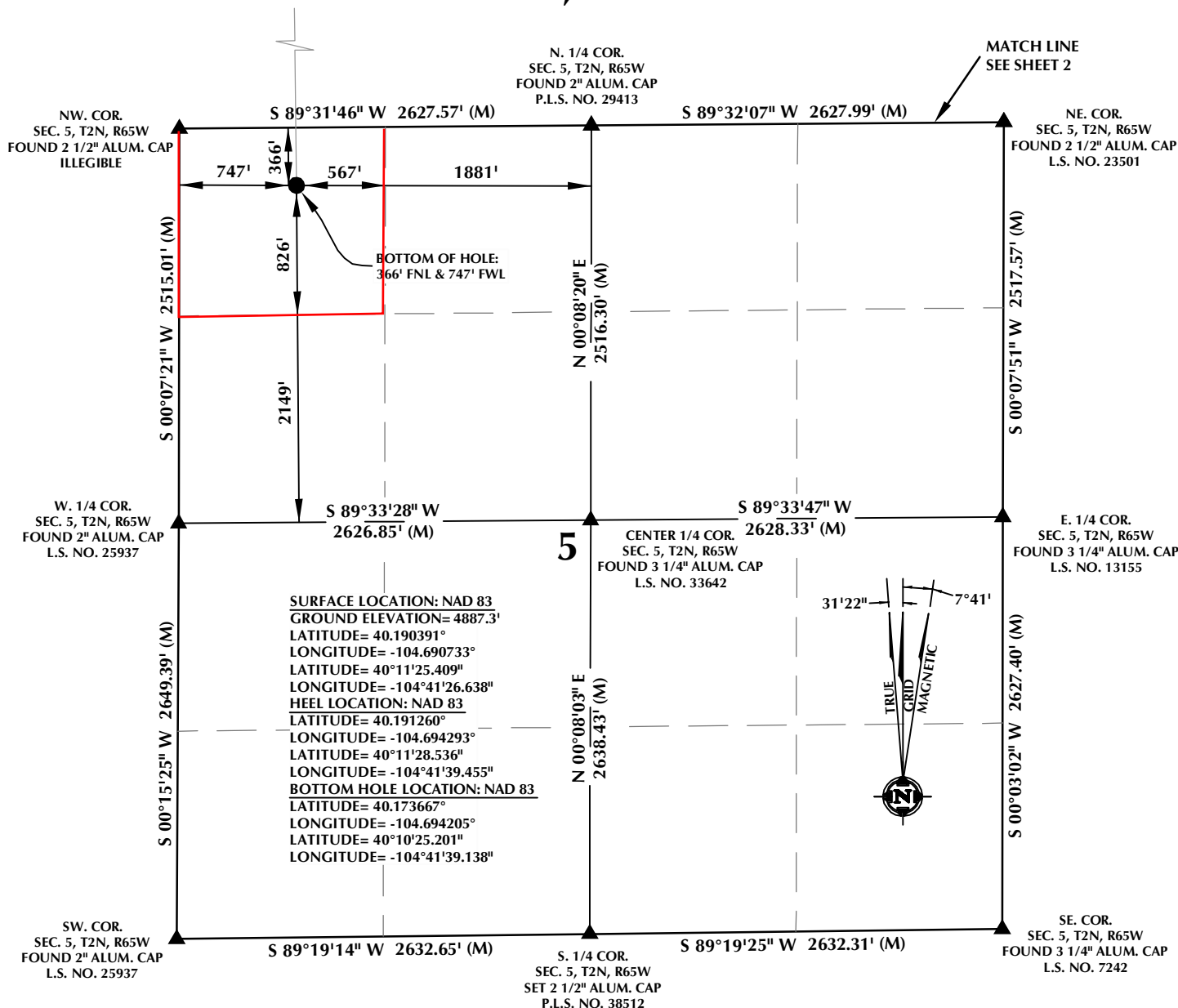
SHERIDAN OFFICE  
1095 Saberton Avenue  
Sheridan, Wyoming 82801  
Phone 307-674-0609

LOVELAND OFFICE  
1635 Foxtrail Drive, Suite 204  
Loveland, Colorado 80538  
Phone 970-776-4331

DRAFTED BY:	LMO	CHECKED BY:	RKF	SHEET NO:
DATE DRAFTED:	1/23/17	DATE SURVEYED:	12/1/16	2
REVISED:		FILE NAME:	16-147	2 OF 3

# PROPOSED SPACING UNIT

## T2N, R65W



### CERTIFICATE OF SURVEYOR:

THIS IS TO CERTIFY THAT THE ABOVE PLAT WAS PREPARED FROM FIELD NOTES OF ACTUAL SURVEY MADE BY ME OR UNDER MY SUPERVISION AND THAT THE SAME ARE TRUE AND CORRECT TO THE BEST OF MY KNOWLEDGE AND BELIEF. THIS CERTIFICATE DOES NOT REPRESENT A LAND SURVEY PLAT OR IMPROVEMENT SURVEY PLAT AS DEFINED BY C.R.S. 38-51-102 AND CANNOT BE RELIED UPON TO DETERMINE OWNERSHIP.

*Randall K. French*  
 RANDALL K. FRENCH  
 PROFESSIONAL LAND SURVEYOR  
 COLORADO REGISTRATION NUMBER 38512

**NOTICE:**  
 ACCORDING TO COLORADO STATE LAW YOU MUST COMMENCE ANY LEGAL ACTION BASED UPON ANY DEFECT IN THIS SURVEY WITHIN THREE YEARS AFTER YOU FIRST DISCOVER SUCH DEFECT. IN NO EVENT MAY ANY ACTION BASED UPON ANY DEFECT IN THIS SURVEY BE COMMENCED MORE THAN TEN YEARS FROM THE DATE ON THE CERTIFICATION SHOWN HEREON.

### NOTES:

- ▲ INDICATES SECTION CORNER
- INDICATES CALCULATED CORNER
- ELEVATION BASED ON NAVD88 (GEOID12B)
- BASIS OF BEARING DERIVED FROM COLORADO COORDINATE SYSTEM OF 1983 NORTH ZONE.
- ALL MEASURED DISTANCES ARE GRID.
- COMBINED SCALE FACTOR: .99972501 CALCULATED FROM THE W. 1/4 CORNER OF SECTION 29, T3N, R65W
- OPERATOR: ROB WILSON / PDOP = 1.3
- SEE ADDENDUM TO WELL LOCATION CERTIFICATE FOR EXISTING IMPROVEMENTS WITHIN 500' OF THE WELL PAD.
- WELL FOOTAGES ARE MEASURED AT RIGHT ANGLES TO THE SECTION LINES.
- THE BOTTOM OF HOLE BEARS S00°44'26"E, 6409' FROM THE HEEL LOCATION.

### WELL PAD - RW 29N-5HZ

RW 4N-5HZ  
 LOCATION CERTIFICATE  
 441' FSL & 1674' FWL SESW (SURFACE)  
 756' FSL & 680' FWL SWSW (HEEL)  
 LOCATED IN SECTION 29  
 T3N, R65W, 6TH P.M.  
 366' FNL & 747' FWL NWNW (BOTTOM)  
 LOCATED IN SECTION 5  
 T2N, R65W, 6TH P.M.  
 WELD COUNTY, COLORADO

**Kerr-McGee Oil &  
 Gas Onshore L.P.**  
 1099 18th Street  
 Denver, Colorado 80202



### CONSULTING, LLC

**SHERIDAN OFFICE**  
 1095 Saberton Avenue  
 Sheridan, Wyoming 82801  
 Phone 307-674-0609

**LOVELAND OFFICE**  
 1635 Foxtrail Drive, Suite 204  
 Loveland, Colorado 80538  
 Phone 970-776-4331

DRAFTED BY:	LMO	CHECKED BY:	RKF	SHEET NO:
DATE DRAFTED:	1/23/17	DATE SURVEYED:	12/1/16	3
REVISED:		FILE NAME:	16-147	3 OF 3