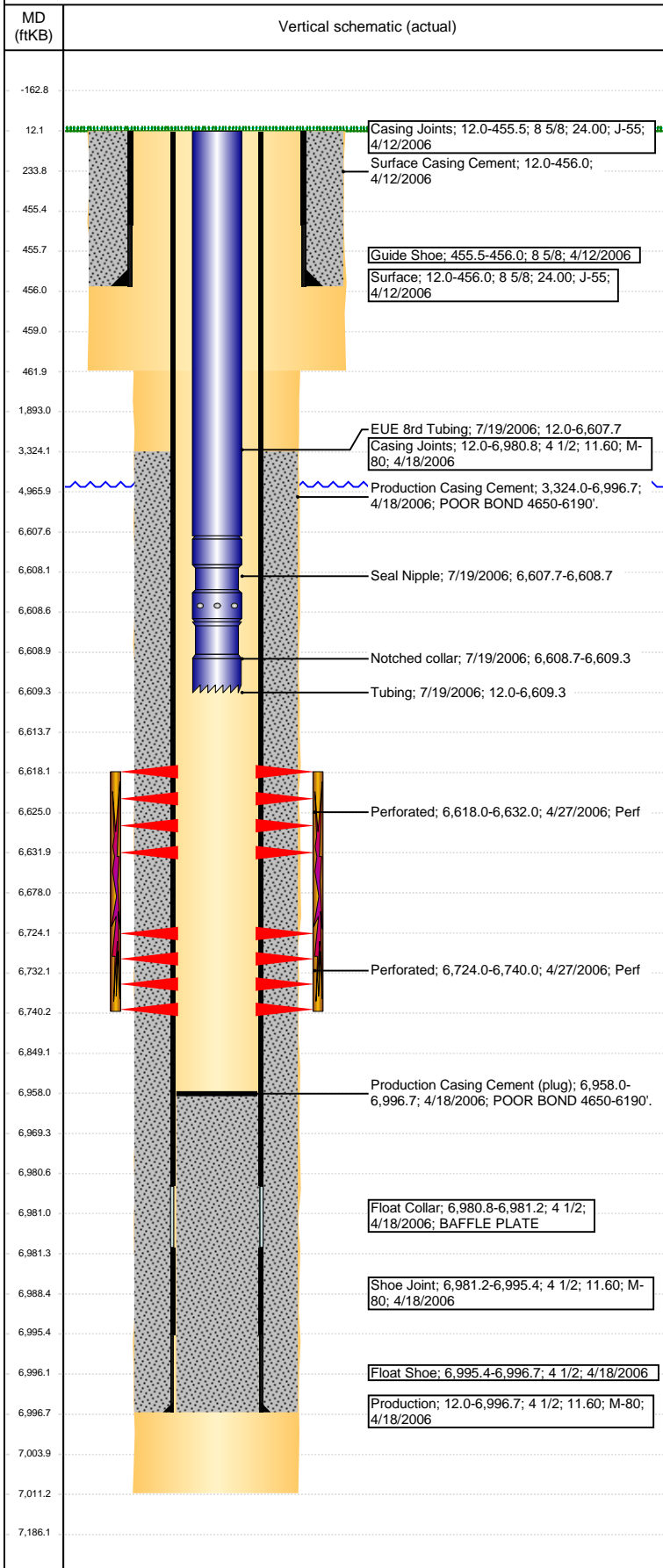


**Well Name: WELLS RANCH 31-33**

DEVIATED - ORIGINAL HOLE, 2/13/2017 2:40:08 PM



Well Header								
API 05-123-23487		Business Unit DJ BASIN		District 15	Well Config DEVIATED			
Original KB Elevation (ft) 4,791		KB - GL / MSL (ftKB) 12.00		Spud Date 4/11/2006		P & A Date		
Comment CDL FORMATION FAULTED OUT IN WELLBORE. TD DISCREPANCY: DRILLER'S TD 6999', ST RPT 6999', LOGGER'S TD 7011'								
Directions To Well								
Congressional Location								
Quarter 3 NW	Quarter 4 NE	Section 33	Township 6	Twntshp N/S Dir N	Range 63	Range E/W Dir W		
Bottom Hole Location								
North-South Distance (ft)		From N or S Line		East-West Distance (ft)		From E or W Line		
Plug Back Total Depths								
Date	Depth (ftKB)	Method		Com				
4/18/2006	6,980.8	TAG		TOP OF SHOE JOINT W/BAFFLE PLATE				
4/27/2006	6,958.0	CASED HOLE LOG		DEPTH LOGGER ON CBL				
Wellbore Sections								
Section Des		Size (in)	Act Top, MD (ftKB)		Act Btm, MD (ftKB)			
SURFACE		12 1/4	12		462			
PRODUCTION		7 7/8	462		7,011			
Zone Statuses								
Zone Name	Status Date	Status	Fluid Type	Job	Prod Method			
NIOBRARA	6/24/2006	PR		DRILLING/CO...				
Casing Strings								
Surface, 456.0ftKB								
Casing Description Surface		Run Date 4/12/2006	OD (in) 8 5/8	Wt/Len (l... 24.00	Grade J-55	Top, MD (ft... 12.0	MD (ftKB) 456.0	
Production, 6,996.7ftKB								
Casing Description Production		Run Date 4/18/2006	OD (in) 4 1/2	Wt/Len (l... 11.60	Grade M-80	Top, MD (ft... 12.0	MD (ftKB) 6,996.7	
Cement								
Description Surface Casing Cement				Top Depth (ftKB) 12.0		Bottom Depth (ftKB) 456.0		
Description Production Casing Cement				Top Depth (ftKB) 3,324.0		Bottom Depth (ftKB) 6,996.7		
Tubing Strings								
Tubing Description Tubing		Run Date 7/19/2006	String... 2 3/8	ID (in) 2.00	Wt (lb/ft) 4.70	Grade J-55	Len (ft) 6,597.28	Set De...
Tubing Components								
Item Des		OD (in)	Wt (lb/ft)	Grade	Jts	Len (ft)	Btm (ftKB)	Btm (TVD) (ftKB)
EUE 8rd Tubing		2 3/8	4.70	J-55	203	6,595.68	6,607.7	
Seal Nipple		2 3/8				1.00	6,608.7	
Notched collar		2 3/8				0.60	6,609.3	
Other In Hole								
Run Date		Des			OD (in)	Top (ftKB)	Btm (ftKB)	
Logs								
Date	Type				Top, MD (ftKB)	Btm, MD (ftKB)		
4/17/2006	COMPENSATED DENSITY				2,500.0	6,991.0		
4/17/2006	INDUCTION				12.0	7,011.0		
4/27/2006	CEMENT BOND				3,187.0	5,010.0		
4/27/2006	CEMENT BOND				4,987.0	6,956.0		
5/5/2015	GYRO				12.0	6,500.0		
Perforation Data								
Linked Zone		Bnch/St g	Sum of Entered Shot Total	Top (ftKB)	Btm (ftKB)	Date		
NIOBRARA, ORIGINAL HOLE		A	84	6,618.00	6,632.00	4/27/2006		
NIOBRARA, ORIGINAL HOLE		B	96	6,724.00	6,740.00	4/27/2006		
Total (Sum)			180					

**Well Name: WELLS RANCH 31-33**

DEVIATED - ORIGINAL HOLE, 2/13/2017 2:40:11 PM

## Stimulation Intervals

Start Date 6/22/2006	Primary Job Type DRILLING/COMPLETION - ORIGINAL	
Technical Result	Tech Result Details	Tech Result Note
Comment		

