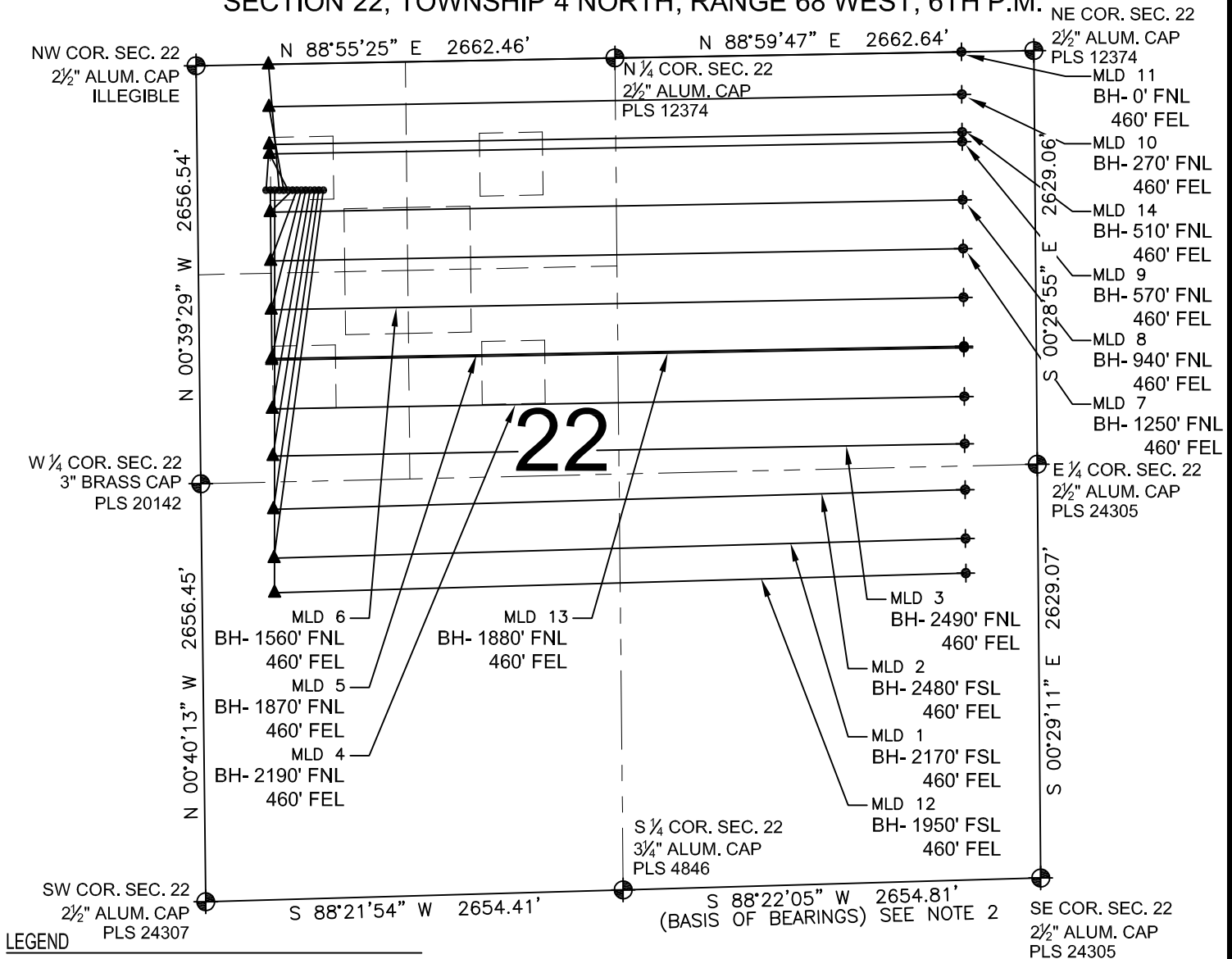


# MLD 22-A MULTI-WELL PLAN

SECTION 22, TOWNSHIP 4 NORTH, RANGE 68 WEST, 6TH P.M.



## LEGEND

- = EXISTING MONUMENT
- = CALCULATED POINT
- = PROPOSED WELL
- ▲ = LANDING POINT
- ◆ = EXISTING WELL
- LP = LANDING POINT
- ◆ = BOTTOM HOLE
- BH = BOTTOM HOLE

## NOTES:

- THIS FIELD SURVEY CONFORMS TO THE MINIMUM STANDARDS SET BY THE C.O.G.C.C., RULE NO. 215
- BEARINGS AND DISTANCE SHOWN HEREON ARE GRID AND BASED ON THE COLORADO STATE PLANE COORDINATE SYSTEM, NAD 83/2011 BETWEEN MONUMENTS AS LABELED HEREON AND ELEVATIONS SHOWN ARE NAVD 88, AS DERIVED BY GPS OBSERVATIONS.
- GRID DISTANCES ARE SHOWN, AS MEASURED IN THE FIELD, WITH TIES TO WELLS MEASURED PERPENDICULAR TO SECTION LINES.

## NOTES:

- MLD 1 TO BE AT 806' FNL, 800' FWL. BOTTOM HOLE AT 2170' FSL & 460' FEL
- MLD 2 TO BE AT 806' FNL, 772' FWL. BOTTOM HOLE AT 2480' FSL & 460' FEL
- MLD 3 TO BE AT 805' FNL, 744' FWL. BOTTOM HOLE AT 2490' FNL & 460' FEL
- MLD 4 TO BE AT 805' FNL, 716' FWL. BOTTOM HOLE AT 2190' FNL & 460' FEL
- MLD 5 TO BE AT 804' FNL, 688' FWL. BOTTOM HOLE AT 1870' FNL & 460' FEL
- MLD 6 TO BE AT 803' FNL, 660' FWL. BOTTOM HOLE AT 1560' FNL & 460' FEL
- MLD 7 TO BE AT 803' FNL, 632' FWL. BOTTOM HOLE AT 1250' FNL & 460' FEL

- MLD 8 TO BE AT 802' FNL, 604' FWL. BOTTOM HOLE AT 940' FNL & 460' FEL
- MLD 9 TO BE AT 802' FNL, 576' FWL. BOTTOM HOLE AT 570' FNL & 460' FEL
- MLD 10 TO BE AT 801' FNL, 548' FWL. BOTTOM HOLE AT 270' FNL & 460' FEL
- MLD 11 TO BE AT 801' FNL, 520' FWL. BOTTOM HOLE AT 0' FNL & 460' FEL
- MLD 12 TO BE AT 800' FNL, 492' FWL. BOTTOM HOLE AT 1950' FSL & 460' FEL
- MLD 13 TO BE AT 800' FNL, 464' FWL. BOTTOM HOLE AT 1880' FNL & 460' FEL
- MLD 14 TO BE AT 799' FNL, 436' FWL. BOTTOM HOLE AT 510' FNL & 460' FEL

PREPARED BY:



EXTRACTION OIL & GAS

FIELD DATE: 07-12-14	PAD NAME: MLD 22-A
DRAWING DATE: 07-15-14	SURFACE LOCATION: NW 1/4 NW 1/4, SEC. 22, T4N, R68W, 6TH P.M.
BY: SMF	CHECKED: JAH
WELD COUNTY, COLORADO	

