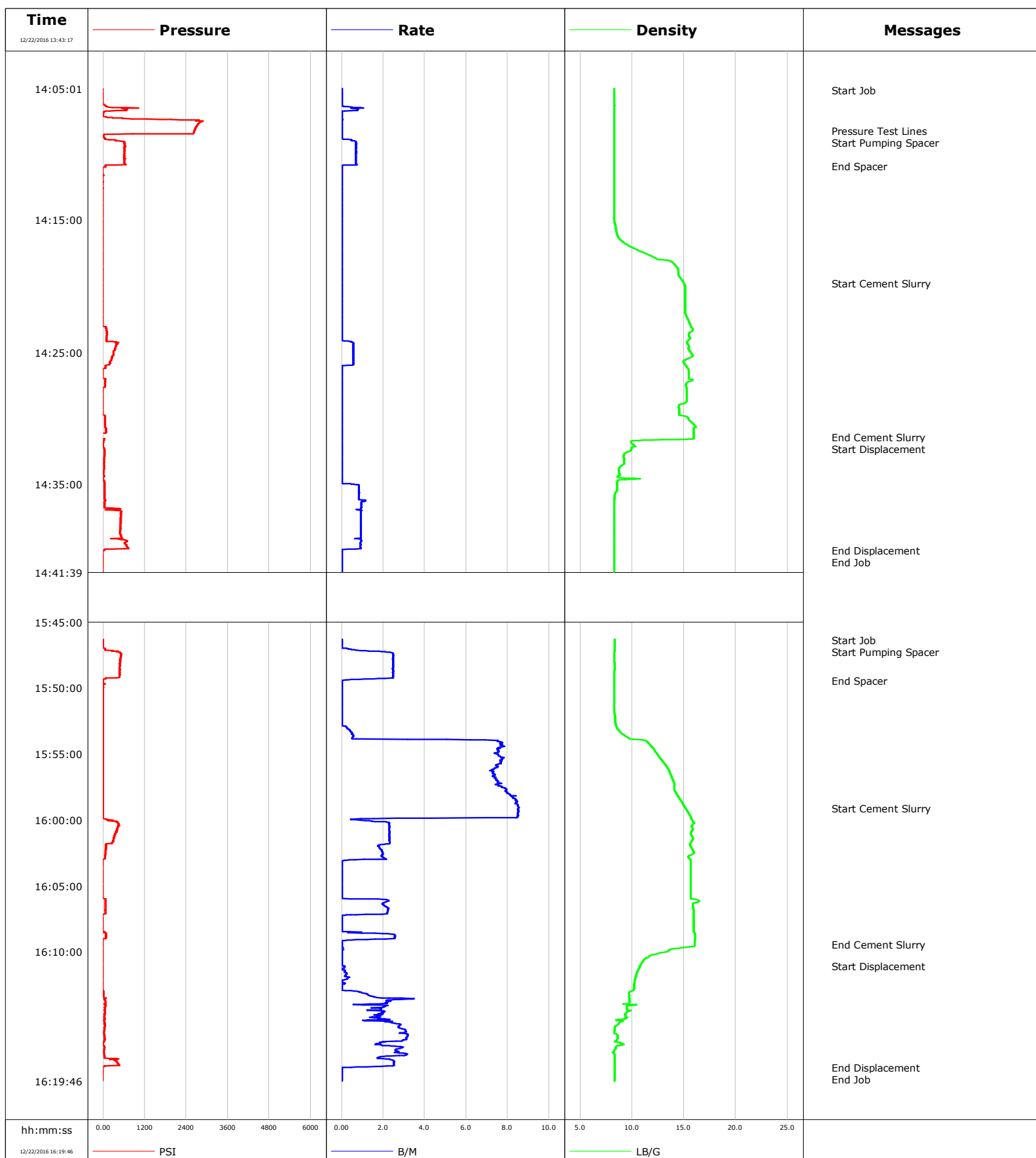


Well Waterfront 7-34X
Field DJ
Engineer Robert Pippin
Country United States

Client Anadarko
SIR No. DA6T-00274
Job Type NIO/Sussex Plugs
Job Date 12-22-2016



Cementing Service Report

				Customer Anadarko			Job Number DA6T-00274				
Well Waterfront 7-34X		Location (legal)			Schlumberger Location Cheyenne			Job Start Dec/22/2016			
Field DJ		Formation Name/Type		Deviation deg	Bit Size in		Well MD 7050.0 ft		Well TVD 7050.0 ft		
County Weld		State/Province Colorado		BHP psi	BHST degF		BHCT degF		Pore Press. Gradient lb/gal		
Well Master		API/UWI									
Rig Name Concord 5	Drilled For Oil		Service Via Land	Casing/ Liner							
				Depth, ft	Size, in	Weight, lb/ft	Grade		Thread		
Offshore Zone	Well Class Old		Well Type Workover	7050.0	4.5	11.6	N80		8RD		
				0.0	0.0	0.0					
Drilling Fluid Type		Max. Density lb/gal	Plastic Viscosity cP	Tubing/Drill Pipe							
				T/D	Depth, ft	Size, in	Weight, lb/ft	Grade			
					7050.0	2.4	4.7	J55			
					0.0	0.0	0.0				
Service Line Cementing		Job Type NIO/Sussex Plugs			Perforations/Open Hole						
Max. Allowed Tub. Press psi		Max. Allowed Ann. Press psi	WH Connection 2 3/8" 4.7# T/S		Top, ft	Bottom, ft	shot/ft	No. of Shots	Total Interval		
Service Instructions Nio 40 sks 1.53ft3/sk 6.35 qps 10.8 bbls @ 15.8ppg Sussex 40sks1.53ft3/sk 6.35 qps 10.8bbls @ 15.8ppg NIO EST TOC 6355 FT SUSSEX EST TOC 3580 FT				ft	ft			ft			
				ft	ft			Diameter			
				ft	ft			in			
				Treat Down Tubing		Displacement 24.0 bbl		Packer Type		Packer Depth ft	
				Tubing Vol. 27.2 bbl		Casing Vol. bbl		Annular Vol. bbl		Openhole Vol. bbl	
Casing/Tubing Secured <input checked="" type="checkbox"/>		1 Hole Vol. Circulated prior to Cement <input checked="" type="checkbox"/>		Casing Tools			Squeeze Job				
Lift Pressure psi				Shoe Type			Squeeze Type				
Pipe Rotated <input type="checkbox"/>		Pipe Reciprocated <input type="checkbox"/>		Shoe Depth ft			Tool Type				
No. Centralizers		Top Plugs	Bottom Plugs	Stage Tool Type			Tool Depth ft				
Cement Head Type				Stage Tool Depth ft			Tail Pipe Size in				
Job Scheduled For Dec/22/2016		Arrived on Location Dec/22/2016		Leave Location Dec/22/2016		Collar Type			Tail Pipe Depth ft		
				Collar Depth ft			Sqz. Total Vol. bbl				
Date	Time 24-hr clock	Treating Pressure PSI	Flow Rate B/M	Density LB/G	Volume BBL	Message					
12/22/2016	13:43:17	-15	0.0	0.06	0.0						
12/22/2016	13:43:47	-15	0.0	0.06	0.0						
12/22/2016	13:44:17	-15	0.0	0.06	0.0						
12/22/2016	13:44:47	-3750	0.0	-6.25	0.0						
12/22/2016	13:45:17	-3750	0.0	-6.25	0.0						
12/22/2016	13:46:17	-1232	0.0	-6.25	0.0						
12/22/2016	13:46:47	-19	0.0	-6.25	0.0						
12/22/2016	13:47:17	54665	0.0	-6.25	0.0						
12/22/2016	13:47:47	-1200	0.0	-6.25	0.0						
12/22/2016	13:48:17	-1164	0.0	-6.25	0.0						
12/22/2016	13:48:47	-19	0.0	-6.25	0.0						
12/22/2016	13:49:17	-19	0.0	0.68	0.0						
12/22/2016	13:49:47	-19	0.0	0.23	0.0						
12/22/2016	13:50:17	-19	0.0	0.06	0.0						
12/22/2016	13:50:47	-19	0.0	0.06	0.0						
12/22/2016	13:51:17	-19	0.0	0.07	0.0						
12/22/2016	13:51:47	-19	0.0	0.06	0.0						
12/22/2016	13:52:17	-19	0.0	0.06	0.0						
12/22/2016	13:52:47	-19	0.0	0.06	0.0						
12/22/2016	13:53:17	-19	0.0	0.81	0.0						
12/22/2016	13:53:47	-3750	0.0	-6.25	0.0						

Well			Field		Job Start		Customer		Job Number	
Waterfront 7-34X			DJ		Dec/22/2016		Anadarko		DA6T-00274	
Date	Time 24-hr clock	Treating Pressure PSI	Flow Rate B/M	Density LB/G	Volume BBL	Message				
12/22/2016	13:54:47	-3750	0.0	-6.25	0.0					
12/22/2016	13:55:17	-19	0.0	-6.25	0.0					
12/22/2016	13:55:47	-1154	0.0	-6.25	0.0					
12/22/2016	13:56:17	-1127	0.0	-6.25	0.0					
12/22/2016	13:56:47	-1100	0.0	-6.25	0.0					
12/22/2016	13:57:17	-985	1.7	-6.25	0.3					
12/22/2016	13:57:47	22	0.0	7.12	0.3					
12/22/2016	13:58:17	13	0.0	8.30	0.3					
12/22/2016	13:58:47	-3750	0.0	-6.25	0.3					
12/22/2016	13:59:17	-3750	0.0	-6.25	0.3					
12/22/2016	13:59:47	-15	0.0	-6.25	0.3					
12/22/2016	14:00:17	-15	0.0	8.29	0.3					
12/22/2016	14:00:47	-15	0.0	8.29	0.3					
12/22/2016	14:01:17	-3750	0.0	-6.25	0.3					
12/22/2016	14:01:17	55709	0.0	-6.25	0.3					
12/22/2016	14:01:47	-10	0.0	6.93	0.3					
12/22/2016	14:02:17	8	0.0	8.29	0.3					
12/22/2016	14:02:47	4	0.0	8.28	0.3					
12/22/2016	14:03:17	-1	0.0	8.28	0.3					
12/22/2016	14:03:47	4	0.0	8.28	0.3					
12/22/2016	14:04:17	-1	0.0	8.28	0.3					
12/22/2016	14:04:47	-15	0.0	8.28	0.3					
12/22/2016	14:05:10	-15	0.0	8.28	0.3	Start Job				
12/22/2016	14:05:17	-15	0.0	8.28	0.3					
12/22/2016	14:05:47	-15	0.0	8.28	0.3					
12/22/2016	14:06:17	45	0.0	8.31	0.3					
12/22/2016	14:06:47	8	0.0	8.28	0.5					
12/22/2016	14:07:17	548	0.0	8.29	0.5					
12/22/2016	14:07:47	2718	0.0	8.28	0.5					
12/22/2016	14:08:12	2640	0.0	8.28	0.5	Pressure Test Lines				
12/22/2016	14:08:17	2627	0.0	8.28	0.5					
12/22/2016	14:08:47	54	0.0	8.28	0.5					
12/22/2016	14:08:52	95	0.3	8.29	0.5	Start Pumping Spacer				
12/22/2016	14:09:17	622	0.7	8.29	0.8					
12/22/2016	14:09:47	612	0.7	8.29	1.2					
12/22/2016	14:10:17	622	0.7	8.28	1.5					
12/22/2016	14:10:47	663	0.7	8.28	1.9					
12/22/2016	14:10:53	59	0.0	8.28	1.9	End Spacer				
12/22/2016	14:11:17	-19	0.0	8.28	1.9					
12/22/2016	14:11:47	-24	0.0	8.28	1.9					
12/22/2016	14:12:17	-24	0.0	8.28	1.9					
12/22/2016	14:12:47	-19	0.0	8.28	1.9					
12/22/2016	14:13:17	-15	0.0	8.28	1.9					
12/22/2016	14:13:47	-15	0.0	8.26	1.9					
12/22/2016	14:14:17	-15	0.0	8.26	1.9					
12/22/2016	14:14:47	-15	0.0	8.26	1.9					
12/22/2016	14:15:17	-15	0.0	8.36	1.9					
12/22/2016	14:15:47	-15	0.0	8.46	1.9					
12/22/2016	14:16:17	-15	0.0	8.68	1.9					
12/22/2016	14:16:47	-15	0.0	9.39	1.9					
12/22/2016	14:17:47	-10	0.0	12.08	1.9					
12/22/2016	14:18:17	-15	0.0	14.03	1.9					
12/22/2016	14:18:47	-15	0.0	14.43	1.9					
12/22/2016	14:19:17	-15	0.0	14.59	1.9					

Well			Field		Job Start		Customer		Job Number	
Waterfront 7-34X			DJ		Dec/22/2016		Anadarko		DA6T-00274	
Date	Time 24-hr clock	Treating Pressure PSI	Flow Rate B/M	Density LB/G	Volume BBL	Message				
12/22/2016	14:19:47	-15	0.0	15.02	1.9					
12/22/2016	14:20:17	-15	0.0	15.13	1.9					
12/22/2016	14:20:47	-15	0.0	15.13	1.9					
12/22/2016	14:21:17	-15	0.0	15.13	1.9					
12/22/2016	14:21:47	-15	0.0	15.11	1.9					
12/22/2016	14:22:17	-15	0.0	15.26	1.9					
12/22/2016	14:22:47	-15	0.0	15.55	1.9					
12/22/2016	14:23:17	95	0.0	15.85	1.9					
12/22/2016	14:23:47	100	0.0	15.49	1.9					
12/22/2016	14:24:17	416	0.6	15.31	2.0					
12/22/2016	14:24:47	342	0.6	15.46	2.2					
12/22/2016	14:25:17	269	0.6	15.86	2.5					
12/22/2016	14:25:47	191	0.6	14.99	2.8					
12/22/2016	14:26:17	-24	0.0	15.43	2.9					
12/22/2016	14:26:47	-24	0.0	15.45	2.9					
12/22/2016	14:27:17	59	0.0	15.33	2.9					
12/22/2016	14:27:47	-24	0.0	15.25	2.9					
12/22/2016	14:28:17	-24	0.0	15.25	2.9					
12/22/2016	14:28:47	-24	0.0	15.19	2.9					
12/22/2016	14:29:17	-28	0.0	14.53	2.9					
12/22/2016	14:29:47	45	0.0	14.69	2.9					
12/22/2016	14:30:17	54	0.0	15.71	2.9					
12/22/2016	14:30:47	81	0.0	15.94	2.9					
12/22/2016	14:31:17	-33	0.0	15.92	2.9					
12/22/2016	14:31:26	-33	0.0	15.92	2.9	End Cement Slurry				
12/22/2016	14:31:47	-1	0.0	9.91	2.9					
12/22/2016	14:32:17	22	0.0	9.95	2.9					
12/22/2016	14:32:47	31	0.0	9.20	2.9					
12/22/2016	14:33:17	22	0.0	9.22	2.9					
12/22/2016	14:33:47	22	0.0	8.76	2.9					
12/22/2016	14:34:17	22	0.0	8.87	2.9					
12/22/2016	14:34:47	27	0.0	8.58	2.9					
12/22/2016	14:35:17	40	0.8	8.57	3.2					
12/22/2016	14:35:47	40	0.8	8.34	3.6					
12/22/2016	14:36:17	54	1.1	8.29	4.0					
12/22/2016	14:36:47	36	0.9	8.29	4.5					
12/22/2016	14:37:17	521	0.9	8.29	5.0					
12/22/2016	14:37:47	493	0.9	8.29	5.4					
12/22/2016	14:38:17	489	0.9	8.29	5.9					
12/22/2016	14:38:47	489	0.9	8.28	6.3					
12/22/2016	14:39:17	690	0.9	8.28	6.8					
12/22/2016	14:39:47	709	0.9	8.29	7.3					
12/22/2016	14:39:59	40	0.0	8.29	7.4	End Displacement				
12/22/2016	14:40:15	-24	0.0	8.29	7.4	End Job				
12/22/2016	14:40:17	-24	0.0	8.28	7.4					
12/22/2016	14:40:47	-24	0.0	8.29	7.4					
12/22/2016	14:41:17	-5	0.0	8.29	7.4					
12/22/2016	14:41:47	-15	0.0	8.29	7.4					
12/22/2016	14:42:17	-15	0.0	8.29	7.4					
12/22/2016	14:42:47	-15	0.0	8.29	7.4					
12/22/2016	14:43:17	-15	0.0	8.29	7.4					
12/22/2016	14:43:47	-15	0.0	8.29	7.4					
12/22/2016	14:44:17	-15	0.0	8.29	7.4					
12/22/2016	14:44:47	-10	0.0	8.29	7.4					

Well			Field		Job Start		Customer		Job Number	
Waterfront 7-34X			DJ		Dec/22/2016		Anadarko		DA6T-00274	
Date	Time 24-hr clock	Treating Pressure PSI		Flow Rate B/M	Density LB/G		Volume BBL	Message		
12/22/2016	15:46:23	-10		0.0	8.31		7.4	Start Job		
12/22/2016	15:46:47	-5		0.0	8.31		7.4			
12/22/2016	15:47:01	49		0.3	8.31		7.4	Start Pumping Spacer		
12/22/2016	15:47:17	397		2.1	8.31		7.6			
12/22/2016	15:47:47	493		2.5	8.30		8.8			
12/22/2016	15:48:17	480		2.5	8.31		10.1			
12/22/2016	15:48:47	475		2.5	8.30		11.3			
12/22/2016	15:49:17	68		2.1	8.30		12.6			
12/22/2016	15:49:27	-1		0.0	8.30		12.7	End Spacer		
12/22/2016	15:49:47	-1		0.0	8.30		12.7			
12/22/2016	15:50:17	-10		0.0	8.30		12.7			
12/22/2016	15:50:47	-10		0.0	8.30		12.7			
12/22/2016	15:51:17	-10		0.0	8.29		12.7			
12/22/2016	15:51:47	-5		0.0	8.30		12.7			
12/22/2016	15:52:17	-5		0.0	8.37		12.7			
12/22/2016	15:52:47	-5		0.0	8.44		12.7			
12/22/2016	15:53:17	-5		0.4	8.78		12.7			
12/22/2016	15:53:47	-5		0.5	9.62		12.7			
12/22/2016	15:54:17	-10		7.7	11.69		12.7			
12/22/2016	15:54:47	-10		7.6	12.20		12.7			
12/22/2016	15:55:17	-10		7.8	12.66		12.7			
12/22/2016	15:55:47	-10		7.5	13.17		12.7			
12/22/2016	15:56:17	-10		7.2	13.59		12.7			
12/22/2016	15:56:47	-10		7.4	13.83		12.7			
12/22/2016	15:57:17	-10		7.5	14.06		12.7			
12/22/2016	15:57:47	-10		7.9	14.10		12.7			
12/22/2016	15:58:17	-10		8.2	14.49		12.7			
12/22/2016	15:58:47	-10		8.4	14.90		12.7			
12/22/2016	15:59:08	-10		8.5	15.18		12.7	Start Cement Slurry		
12/22/2016	15:59:17	-10		8.5	15.28		12.7			
12/22/2016	15:59:47	-5		8.5	15.67		12.7			
12/22/2016	16:00:17	443		2.3	15.95		13.3			
12/22/2016	16:00:47	402		2.3	15.78		14.4			
12/22/2016	16:01:17	320		2.3	15.80		15.5			
12/22/2016	16:01:47	265		2.3	15.62		16.7			
12/22/2016	16:02:17	68		1.9	15.85		17.6			
12/22/2016	16:02:47	54		1.9	15.42		18.6			
12/22/2016	16:03:17	-19		0.0	15.62		19.1			
12/22/2016	16:03:47	-19		0.0	15.63		19.1			
12/22/2016	16:04:17	-19		0.0	15.64		19.1			
12/22/2016	16:04:47	-19		0.0	15.64		19.1			
12/22/2016	16:05:17	-19		0.0	15.64		19.1			
12/22/2016	16:05:47	-19		0.0	15.65		19.1			
12/22/2016	16:06:17	63		2.0	16.04		19.7			
12/22/2016	16:06:47	59		2.2	15.91		20.8			
12/22/2016	16:07:47	-28		0.0	15.94		21.6			
12/22/2016	16:08:17	-28		0.0	15.94		21.6			
12/22/2016	16:08:47	86		2.6	16.07		22.2			
12/22/2016	16:09:17	-28		0.0	16.04		22.9			
12/22/2016	16:09:26	-28		0.0	16.04		22.9	End Cement Slurry		
12/22/2016	16:09:47	-28		0.0	13.82		22.9			
12/22/2016	16:10:17	-24		0.0	11.73		22.9			
12/22/2016	16:10:47	-24		0.0	10.95		22.9			
12/22/2016	16:11:02	-24		0.0	10.76		22.9	Start Displacement		

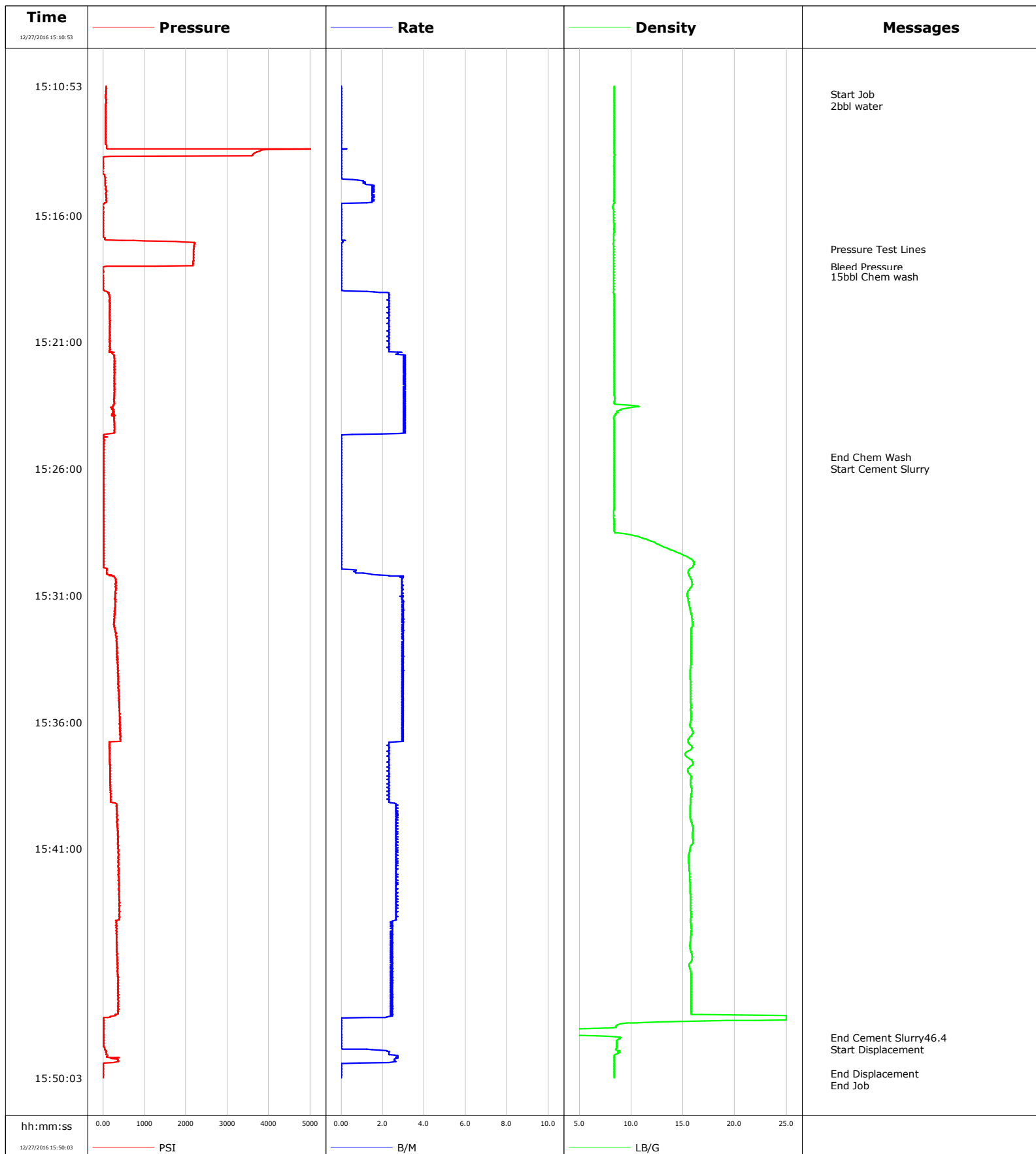
Well			Field		Job Start	Customer		Job Number
Waterfront 7-34X			DJ		Dec/22/2016	Anadarko		DA6T-00274
Date	Time 24-hr clock	Treating Pressure PSI	Flow Rate B/M	Density LB/G	Volume BBL	Message		
12/22/2016	16:11:47	-24	0.2	10.38	23.0			
12/22/2016	16:12:17	-24	0.0	10.23	23.1			
12/22/2016	16:12:47	-24	0.0	10.21	23.1			
12/22/2016	16:13:17	8	1.3	9.74	23.4			
12/22/2016	16:13:47	63	2.2	9.77	24.5			
12/22/2016	16:14:17	49	1.9	9.50	25.5			
12/22/2016	16:14:47	36	1.8	9.41	26.4			
12/22/2016	16:15:17	36	2.1	8.90	27.3			
12/22/2016	16:15:47	36	2.8	8.32	28.6			
12/22/2016	16:16:17	27	3.2	8.61	30.1			
12/22/2016	16:16:47	-1	2.1	8.32	31.7			
12/22/2016	16:17:17	31	2.8	8.43	32.8			
12/22/2016	16:17:47	27	3.1	8.31	34.2			
12/22/2016	16:18:17	379	2.5	8.31	35.3			
12/22/2016	16:18:44	-28	0.1	8.31	36.3	End Displacement		
12/22/2016	16:18:47	-28	0.0	8.31	36.3			

Post Job Summary

Average Pump Rates, bbl/min					Volume of Fluid Injected, bbl			
Slurry 2.7	N2	Mud	Maximum Rate 8.6	Total Slurry 21.6	Mud 0.0	Spacer 10.0	N2	
Treating Pressure Summary, psi					Breakdown Fluid			
Maximum 56180	Final -28	Average 788	Bump Plug to	Breakdown	Type	Volume bbl	Density lb/gal	
Avg. N2 Percent %		Designed Slurry Volume 21.6 bbl	Displacement 38.0 bbl	Mix Water Temp 50 degF	Cement Circulated to Surface? <input type="checkbox"/>	Volume bbl		
					Washed Thru Perfs <input type="checkbox"/>	To ft		
Customer or Authorized Representative Luis Morales			Schlumberger Supervisor Robert Pippin			Circulation Lost <input type="checkbox"/>	Job Completed <input checked="" type="checkbox"/>	
						-	-	

Well Water Front
Field DJ
Engineer Chris Valerio
Country United States

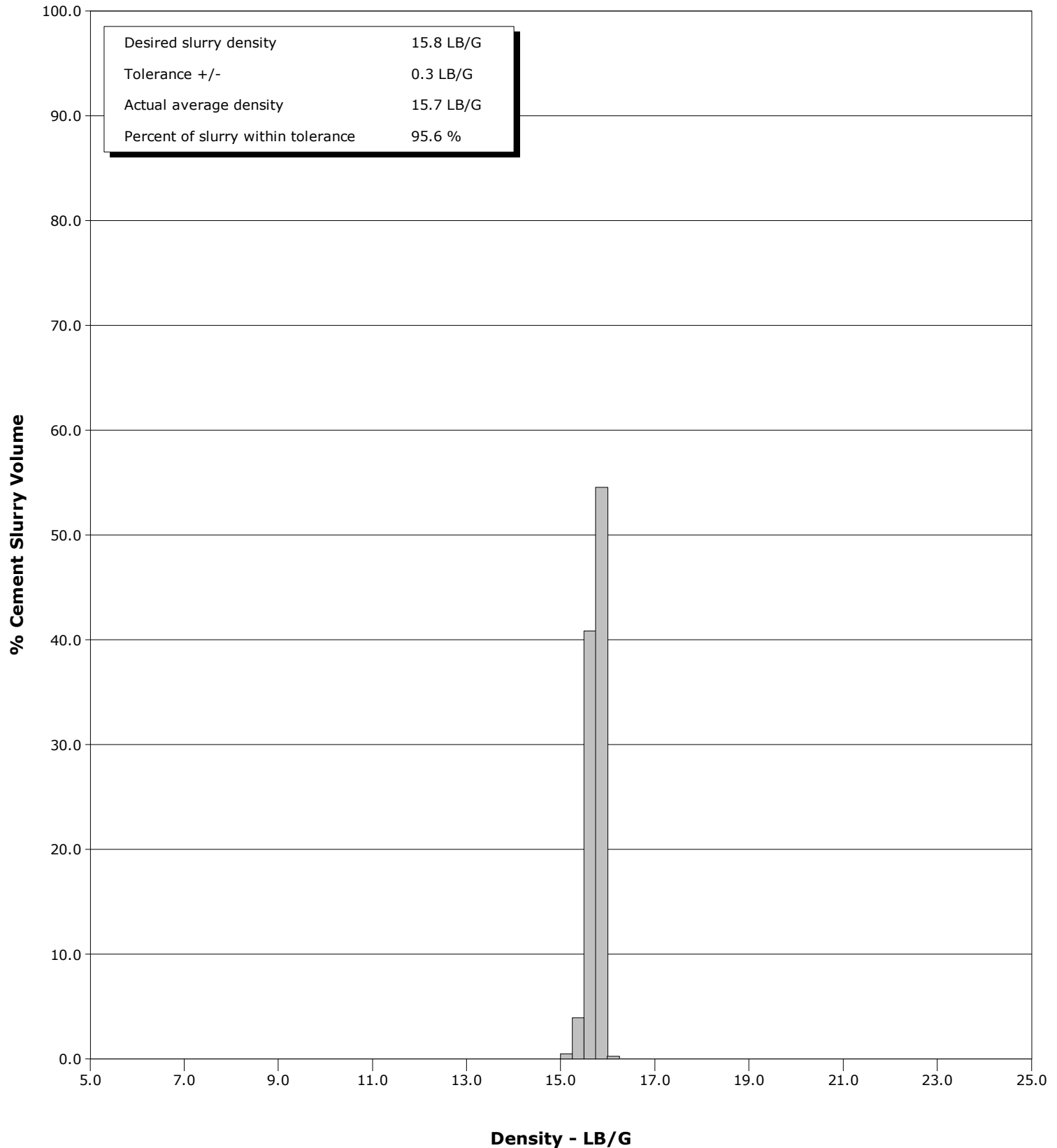
Client Anadarko
SIR No. DA6T-00276
Job Type Stub Plug
Job Date 12-27-2016



Well Water Front
Field DJ
Engineer Chris Valerio
Country United States

Client Anadarko
SIR No. DA6T-00276
Job Type Stub Plug
Job Date 12-27-2016

Cement Slurry - 12/27/2016 15:30:15 to 12/27/2016 15:47:31



Cementing Service Report

				Customer Anadarko			Job Number DA6T-00276			
Well Water Front 7-34X			Location (legal)		Schlumberger Location			Job Start Dec/27/2016		
Field DJ		Formation Name/Type		Deviation deg	Bit Size in		Well MD 1336.0 ft			
County Weld		State/Province Colorado		BHP psi	BHST 90 degF		BHCT 80 degF			
Well Master 0631044632		API/UWI 512325574						Pore Press. Gradient lb/gal		
Rig Name Concord #5	Drilled For N/A		Service Via Land		Casing/ Liner					
					Depth, ft	Size, in	Weight, lb/ft	Grade	Thread	
Offshore Zone	Well Class Old		Well Type Workover		921.0	8.6	24.0	J55	8RD	
					1336.0	4.5	11.6	M80	8RD	
Drilling Fluid Type Other		Max. Density 8.30 lb/gal	Plastic Viscosity cP		Tubing/Drill Pipe					
					T/D	Depth, ft	Size, in	Weight, lb/ft	Grade	
Service Line Cementing	Job Type Stub Plug				T	1336.0	2.4	4.7	J55	
						0.0	0.0	0.0		
Max. Allowed Tub. Press 1000 psi		Max. Allowed Ann. Press psi		WH Connection 2 3/8" 4.7# T/S		Perforations/Open Hole				
					Top, ft	Bottom, ft	shot/ft	No. of Shots	Total Interval	
					ft	ft			ft	
					ft	ft			Diameter	
					ft	ft			in	
Service Instructions 2bbl Water 15bbl Chem Wash 46.4bbl 225sks CMT @ 15.8# 1.16 Yield 5.11 gal/sk water Displace 1bbl Water Estimated top of CMT 491'					Treat Down Tubing		Displacement 1.0 bbl		Packer Type	
									Packer Depth ft	
					Tubing Vol. 5.1 bbl		Casing Vol. bbl		Annular Vol. bbl	
									Openhole Vol. bbl	
Casing/Tubing Secured <input checked="" type="checkbox"/>		1 Hole Vol. Circulated prior to Cement <input checked="" type="checkbox"/>		Casing Tools			Squeeze Job			
Lift Pressure psi				Shoe Type			Squeeze Type			
Pipe Rotated <input type="checkbox"/>		Pipe Reciprocated <input type="checkbox"/>		Shoe Depth ft			Tool Type			
No. Centralizers		Top Plugs		Bottom Plugs		Stage Tool Type			Tool Depth ft	
Cement Head Type				Stage Tool Depth ft			Tail Pipe Size in			
Job Scheduled For Dec/27/2016 14:00		Arrived on Location Dec/27/2016 14:00		Leave Location Dec/27/2016 17:00		Collar Type			Tail Pipe Depth ft	
						Collar Depth ft			Sqz. Total Vol. bbl	
Date	Time 24-hr clock	Treating Pressure PSI	Flow Rate B/M	Density LB/G	Stg Volume BBL	Message				
12/27/2016	15:10:53	72	0.0	8.38	0.0	Started Acquisition				
12/27/2016	15:11:12	72	0.0	8.38	0.0	Start Job				
12/27/2016	15:11:21	68	0.0	8.38	0.0	2bbl water				
12/27/2016	15:15:53	13	0.0	8.31	1.3					
12/27/2016	15:17:19	2192	0.0	8.34	1.3	Pressure Test Lines				
12/27/2016	15:18:02	31	0.0	8.34	1.3	Bleed Pressure				
12/27/2016	15:18:25	8	0.0	8.35	0.0	15bbl Chem wash				
12/27/2016	15:20:53	164	2.3	8.38	4.3					
12/27/2016	15:25:32	13	0.0	8.38	15.3	End Chem Wash				
12/27/2016	15:25:39	13	0.0	8.38	0.0	Start Cement Slurry				
12/27/2016	15:25:53	17	0.0	8.38	0.0					
12/27/2016	15:30:53	287	2.9	15.45	2.2					
12/27/2016	15:35:53	406	2.9	15.78	17.0					
12/27/2016	15:40:53	374	2.7	15.78	29.7					
12/27/2016	15:45:53	356	2.4	15.76	42.6					
12/27/2016	15:48:28	13	0.0	9.01	47.0	End Cement Slurry46.4				
12/27/2016	15:48:35	13	0.0	8.62	0.0	Start Displacement				
12/27/2016	15:49:53	8	0.0	8.38	1.3	End Displacement				

Well Water Front 7-34X	Field DJ	Job Start Dec/27/2016	Customer Anadarko	Job Number DA6T-00276
----------------------------------	--------------------	---------------------------------	-----------------------------	---------------------------------

Post Job Summary

Average Pump Rates, bbl/min					Volume of Fluid Injected, bbl					
Slurry 2.6	N2	Mud	Maximum Rate 3.1		Total Slurry 46.4	Mud 0.0	Spacer 16.7	N2		
Treating Pressure Summary, psi					Breakdown Fluid					
Maximum 397	Final 8	Average 279	Bump Plug to	Breakdown	Type		Volume bbl		Density lb/gal	
Avg. N2 Percent %		Designed Slurry Volume 46.4 bbl		Displacement 1.3 bbl		Mix Water Temp 50 degF		Cement Circulated to Surface? <input type="checkbox"/>		Volume bbl
								Washed Thru Perfs <input type="checkbox"/>		To ft
Customer or Authorized Representative Bryan Olmstead				Schlumberger Supervisor Chris Valerio				Circulation Lost <input type="checkbox"/>		Job Completed <input checked="" type="checkbox"/>
								-		-