

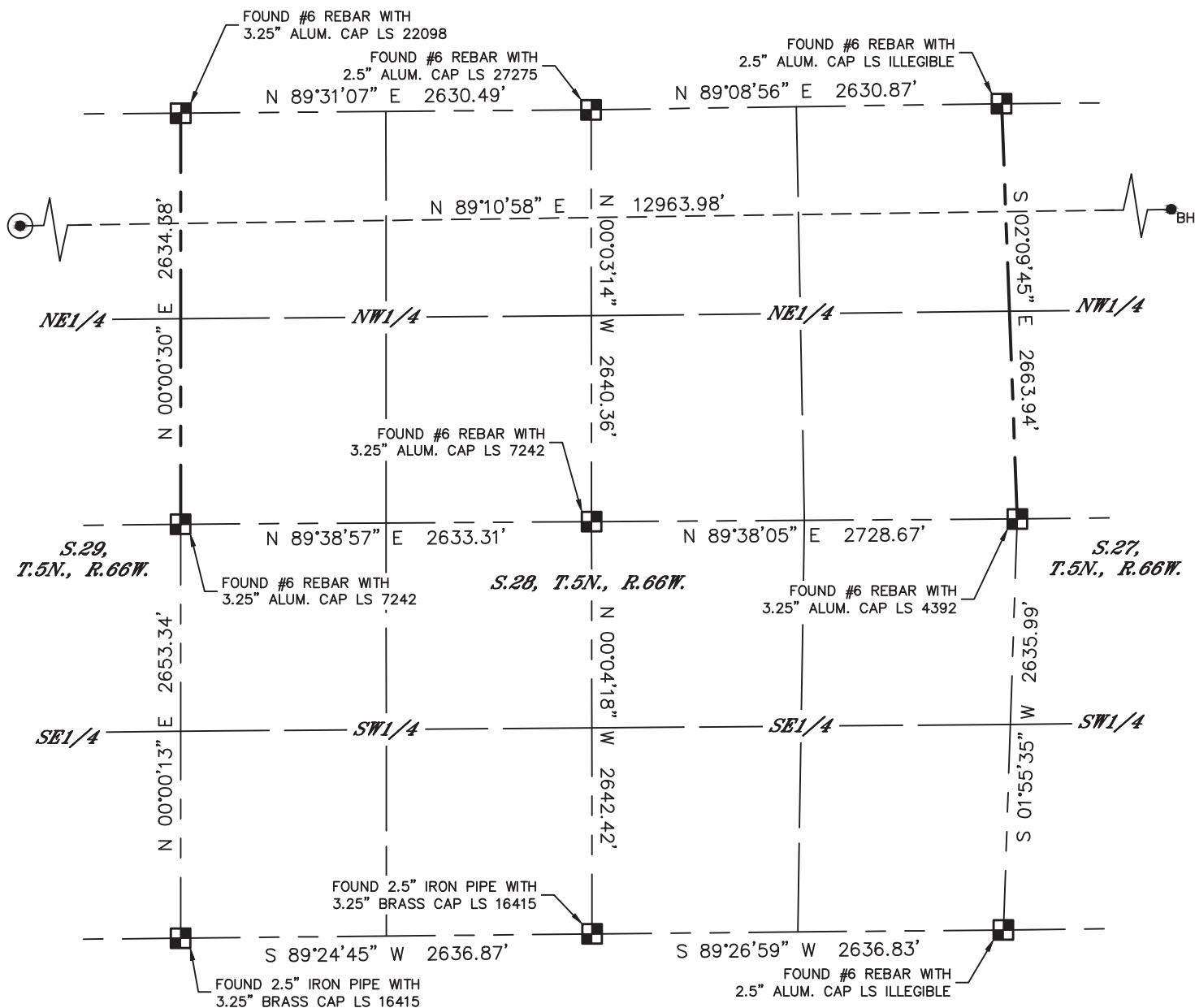
Brian T. Brinkman—On behalf of ~~16440~~, Inc.  
Colorado Licensed Professional Land Surveyor No. 38175 DATE: 1/3/2017  
PROJECT#: 2016030

Lat40°, Inc. 6250 W. 10th Street, Unit 2, Greeley, CO 970-515-5294








# WELL LOCATION CERTIFICATE

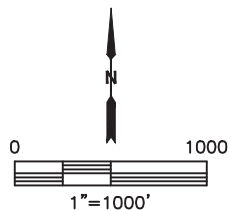
SANFORD J29-680

SECTION: 29  
TOWNSHIP: 5N  
RANGE: 66W  
6TH. P.M.  
WELD COUNTY, CO



### LEGEND

-  = ALIQUOT MONUMENT AS DESCRIBED  
 = CALCULATED POSITION  
 = SURFACE HOLE LOCATION (SHL)  
 = ENTRY POINT LOCATION (EP)  
 = BOTTOM HOLE LOCATION (BHL)  
 = EXISTING WELL  
 = ABANDONED WELL



*SHEET 2 OF 3*

Brian T. Brinkman—On behalf of L&L, Inc.  
Colorado Licensed Professional Land Surveyor No. 38175  
DATE: 1/3/2017  
PROJECT#: 2016030

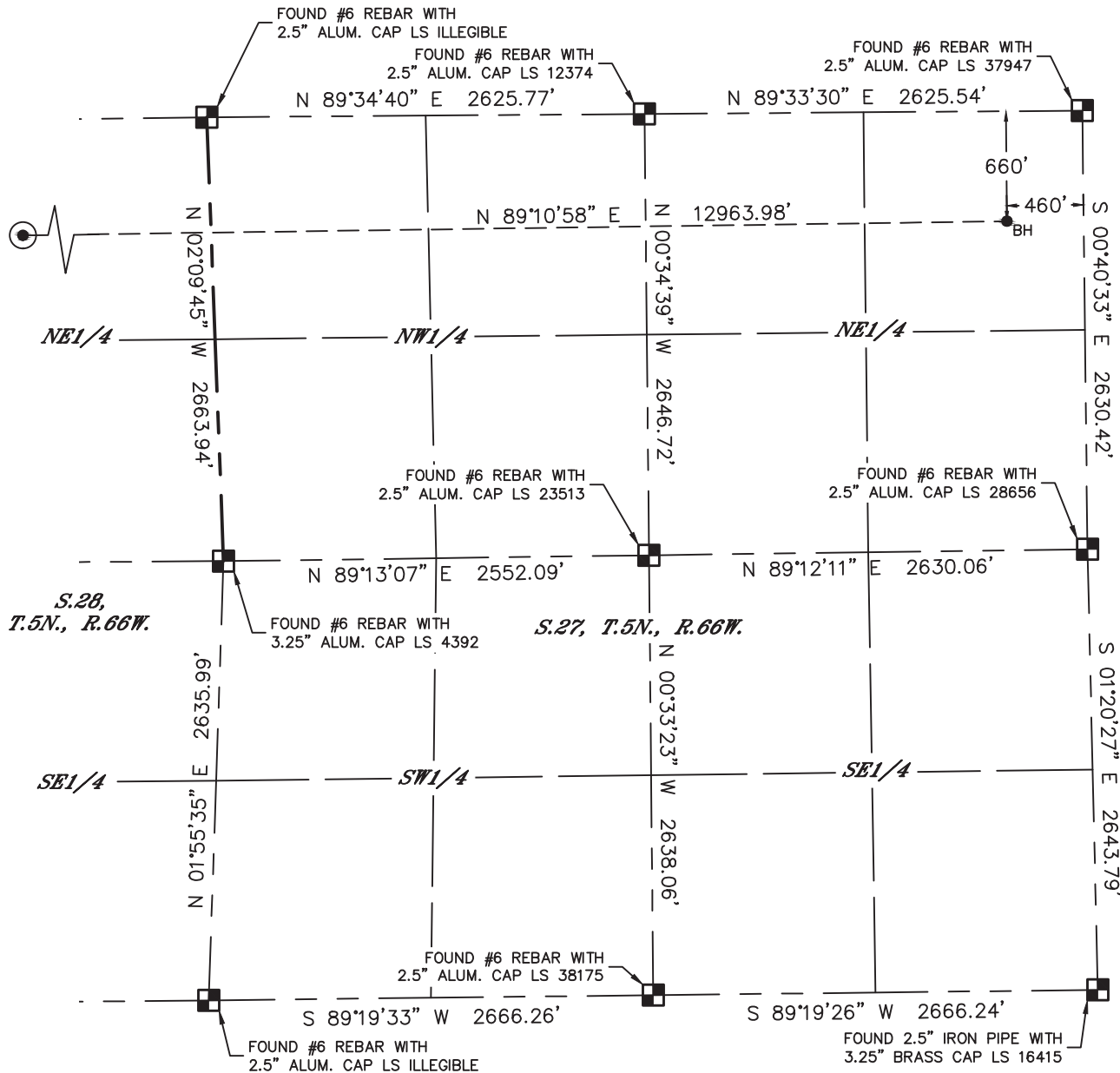


Lat40°, Inc. 6250 W. 10th Street, Unit 2, Greeley, CO 970-515-5294

# WELL LOCATION CERTIFICATE

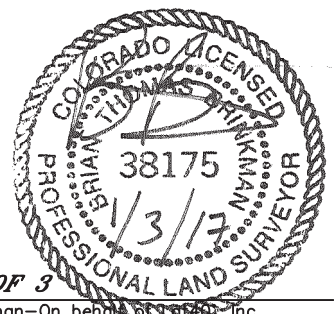
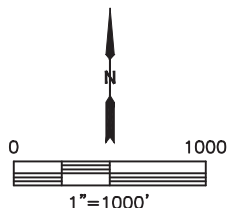
SANFORD J29-680

SECTION: 29  
TOWNSHIP: 5N  
RANGE: 66W  
6TH. P.M.  
WELD COUNTY, CO



## LEGEND

- = ALIQUOT MONUMENT AS DESCRIBED
- = CALCULATED POSITION
- ⊙ = SURFACE HOLE LOCATION (SHL)
- ▲ = ENTRY POINT LOCATION (EP)
- <sub>BH</sub> = BOTTOM HOLE LOCATION (BHL)
- ⊕ = EXISTING WELL
- ⊕<sub>dot</sub> = ABANDONED WELL



SHEET 3 OF 3

Brian T. Brinkman—On behalf of Lat40°, Inc.  
Colorado Licensed Professional Land Surveyor No. 38175  
DATE: 1/3/2017  
PROJECT#: 2016030