

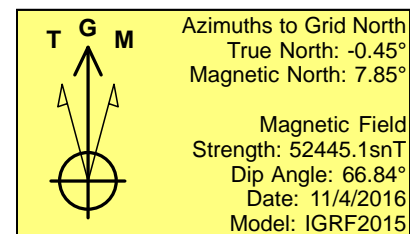
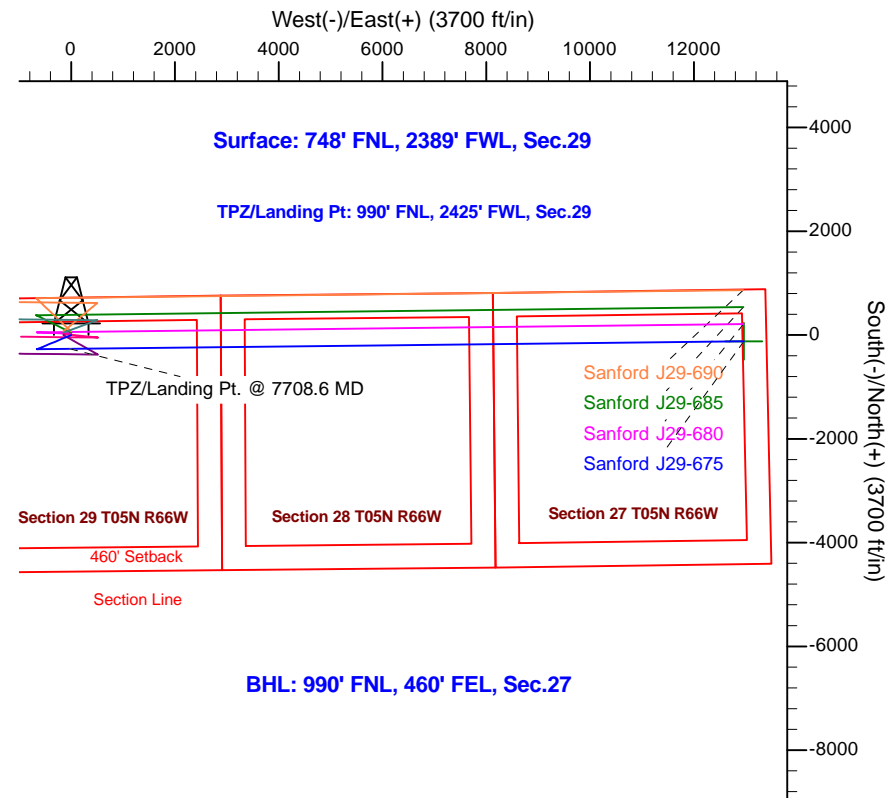
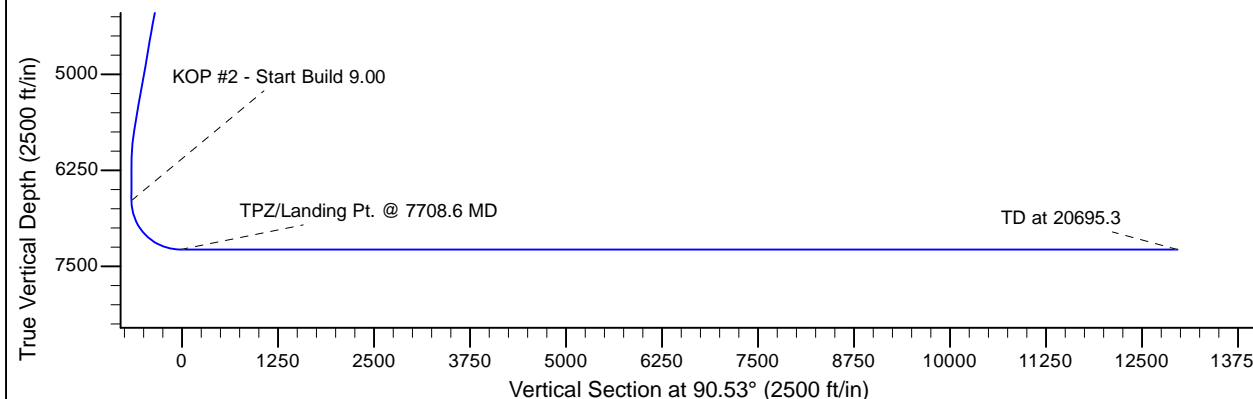
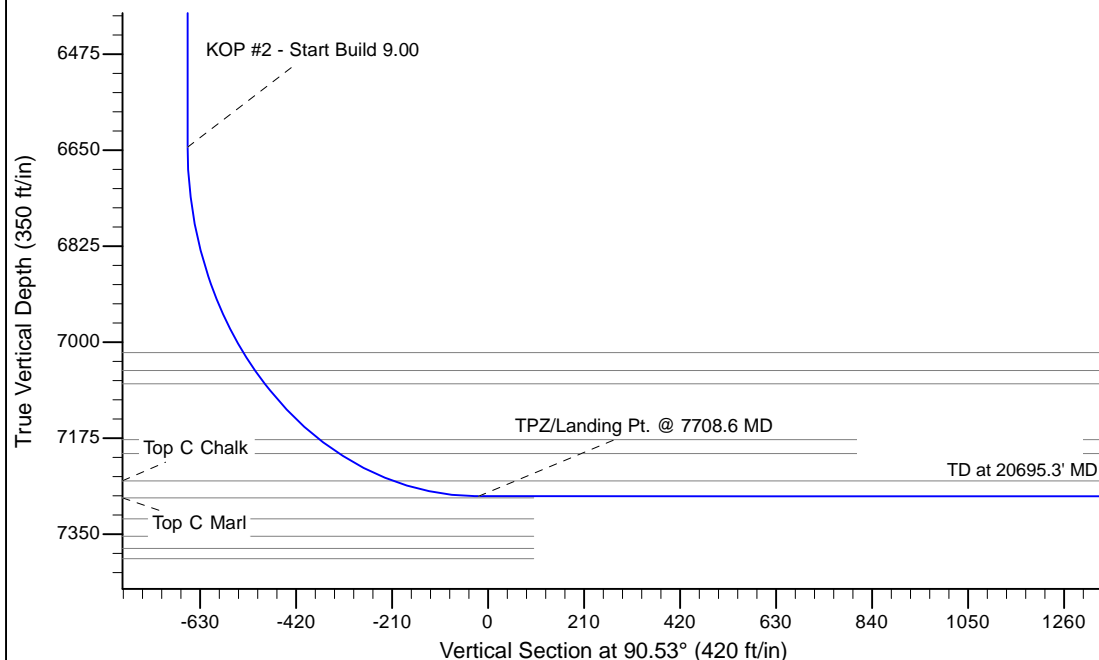
Project: Greeley Crescent
 Site: J Section 29-T5N-R66W Weld County, CO
 Well: Sanford J29-675
 Wellbore: Original Drilling
 Design: APD - Rev 1

Northern Region - DJ Basin

Geodetic System: US State Plane 1983
 Datum: North American Datum 1983
 Ellipsoid: GRS 1980
 Zone: Colorado Northern Zone
 System Datum: Mean Sea Level

SECTION DETAILS

Sec	MD	Inc	Azi	TVD	+N/-S	+E/-W	Dleg	TFace	VSec	Target
1	0.0	0.00	0.00	0.0	0.0	0.0	0.00	0.00	0.0	
2	1900.0	0.00	0.00	1900.0	0.0	0.0	0.00	0.00	0.0	
3	2438.3	10.77	247.38	2435.2	-19.4	-46.6	2.00	247.38	-46.4	
4	5725.9	10.77	247.38	5664.8	-255.6	-613.4	0.00	0.00	-611.0	
5	6264.2	0.00	0.00	6200.0	-275.0	-660.0	2.00	180.00	-657.4	
6	6708.6	0.00	0.00	6644.4	-275.0	-660.0	0.00	0.00	-657.4	
7	7708.6	90.00	89.35	7281.0	-267.8	-23.4	9.00	89.35	-20.9	
8	20695.3	90.00	89.35	7281.0	-120.8	12962.4	0.00	0.00	12963.0	Sanford J29-675 BHL 990'FNL, 460'FEL



WELL DETAILS: Sanford J29-675					
Ground Elevation: 4903.0' MD					
Northing		Easting		Latitude	Longitude
0.0	0.0	1380468.14	3193802.04	40.3757000	-104.8043900
Plan: APD - Rev 1 (Sanford J29-675/Original Drilling)					
Created By: Shailey Jewell			Date: 13:38, January 16 2017		
OK to submit with 2A as per Noble Drilling					
1/16/2017 1:41					