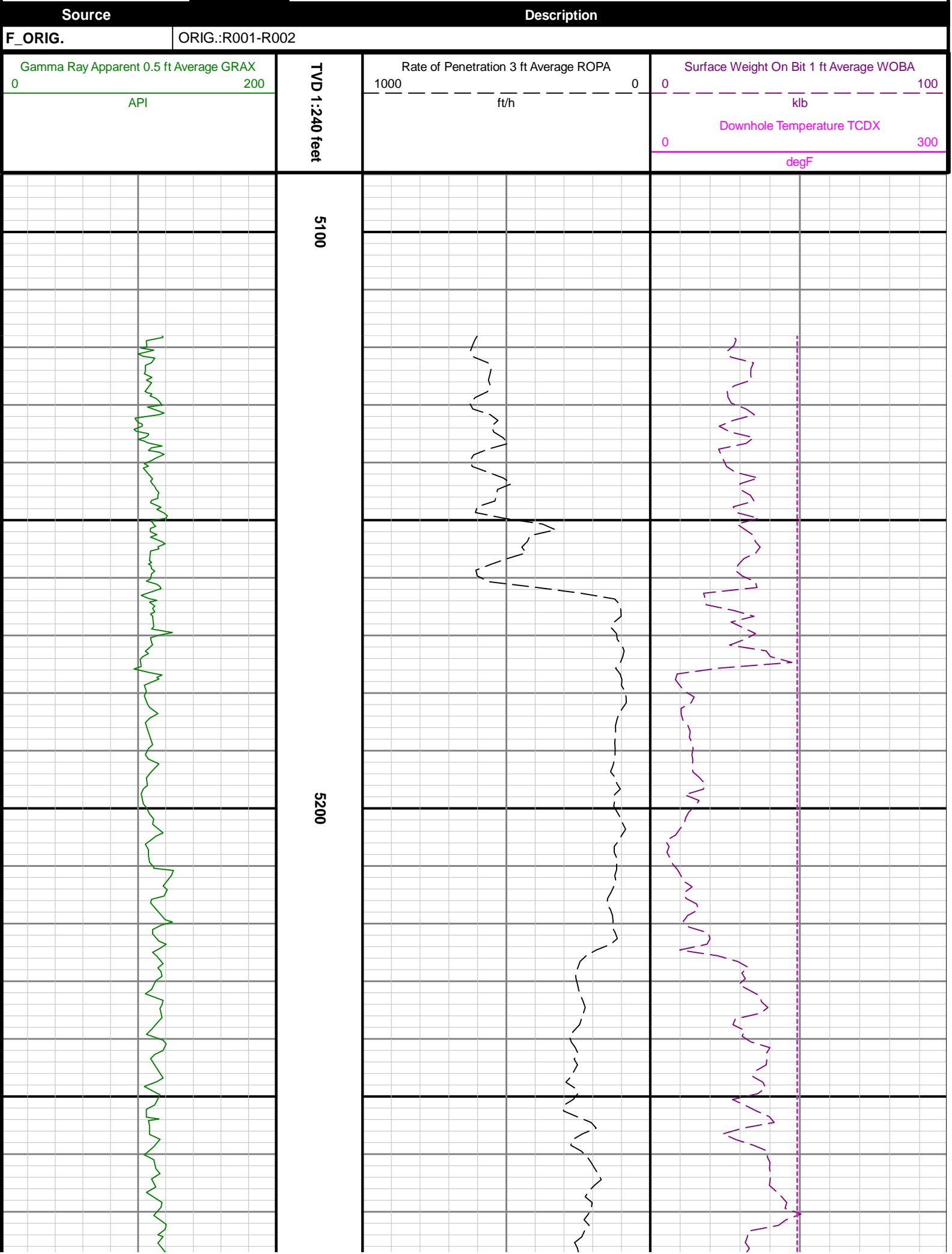
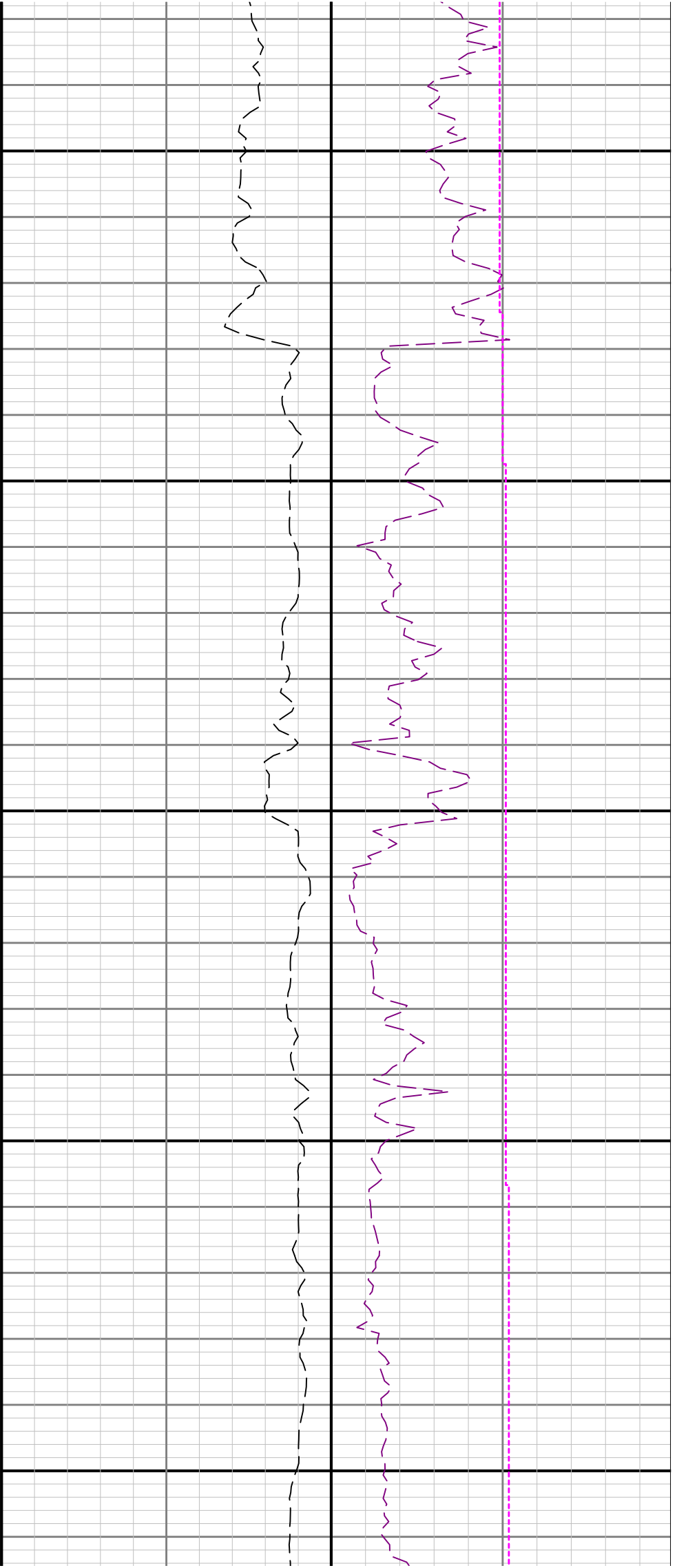




Company	Whiting Oil & Gas Corp			
Well	HorseTail 30E-1935			
Interval	Date From:	2016-10-17 02:32:28	Top:	5118.00
	Date To:	2016-10-17 15:44:37	Bottom:	5915.00
Created	2016-10-17 15:51			

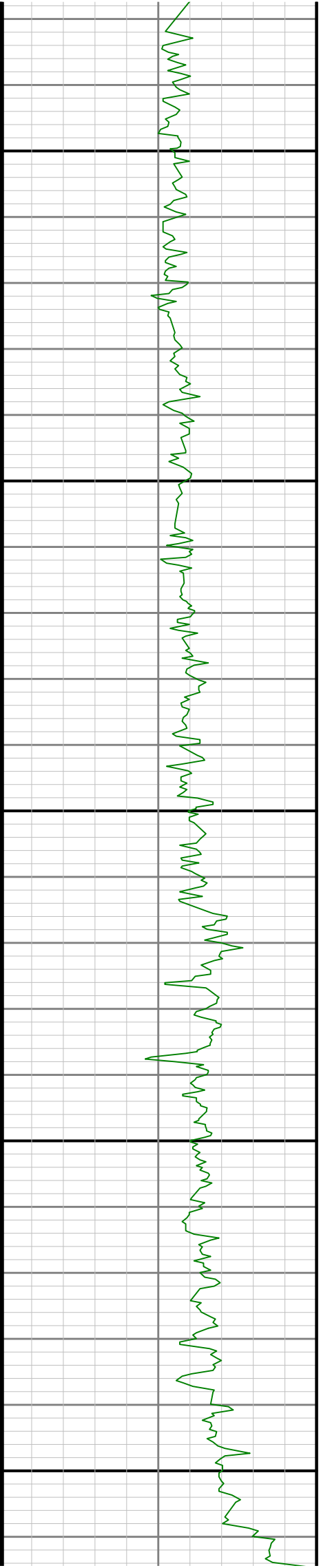


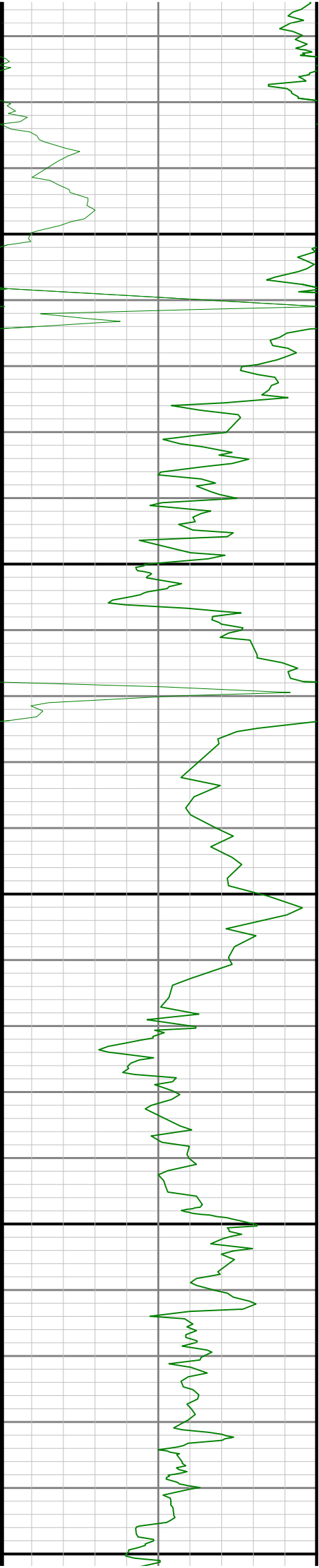


5300

5400

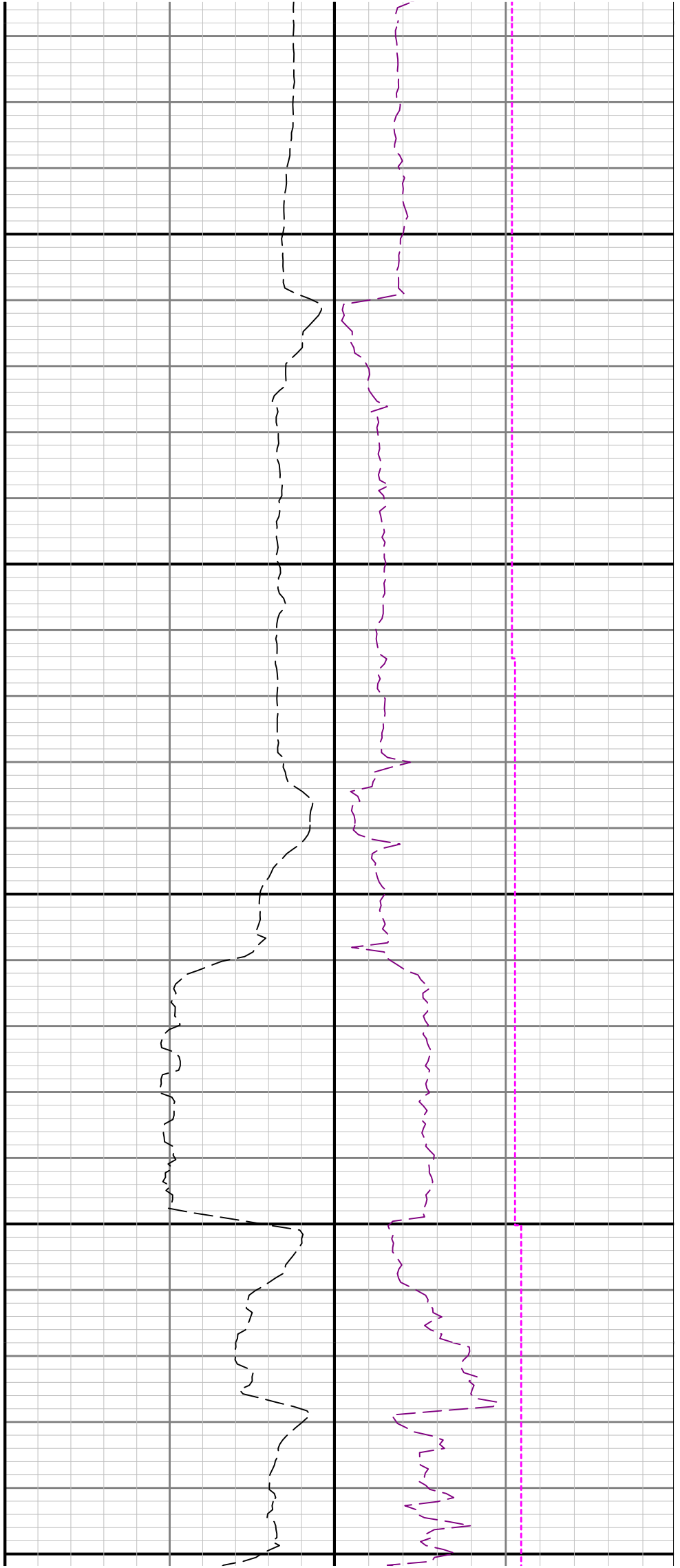
5500

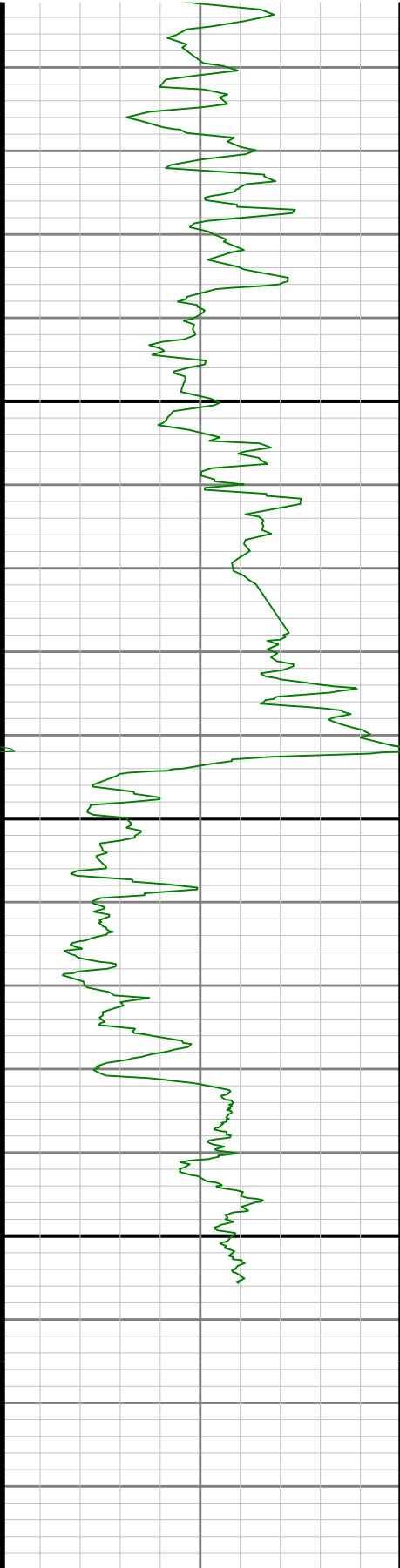




5600

5700

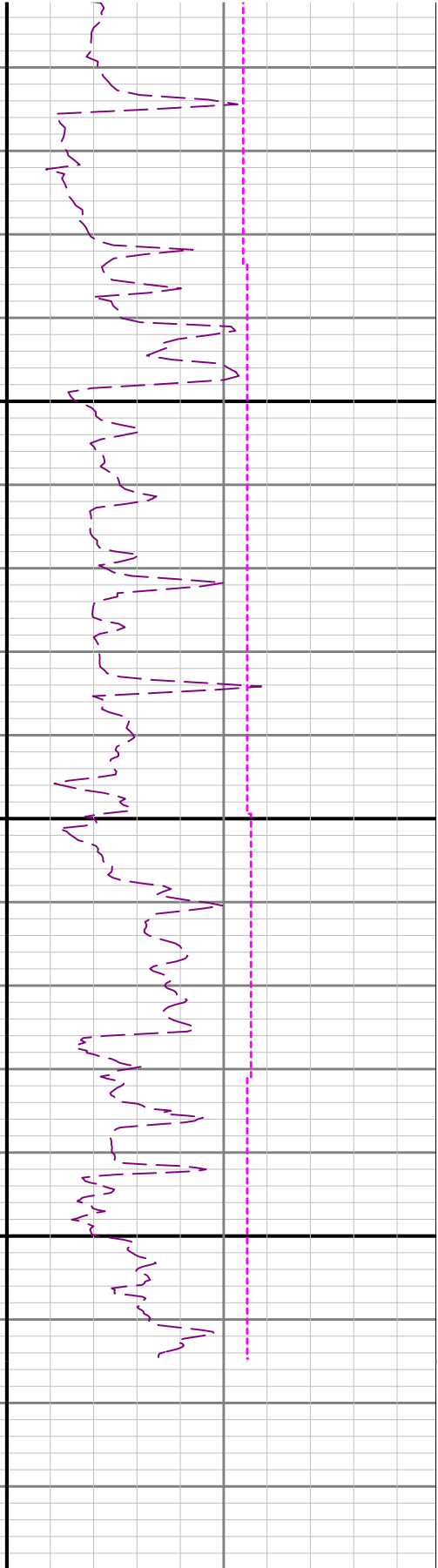




5800

5900

R2<



Gamma Ray Apparent 0.5 ft Average GRAX
0 200
API

TVD 1:240 feet

Rate of Penetration 3 ft Average ROPA
1000 0
ft/h

Surface Weight On Bit 1 ft Average WOBA
0 100
klb
Downhole Temperature TCDX
0 300
degF