

LEGEND:

└─ = 90° SYMBOL

● = PROPOSED WELLHEAD.

▲ = SECTION CORNERS

T4S, R65W, 6th P.M.

2003 Alum. Cap,
#25645, 0.3'
Below Ground
Lat: 39.682050°
Long: 104.678453°

1984 Brass Cap,
0.9' Below Ground
Lat: 39.682006°
Long: 104.668942°

1985 Brass Cap,
#15649 In Range Box,
2.4' Below Ground
Lat: 39.681961°
Long: 104.659522°

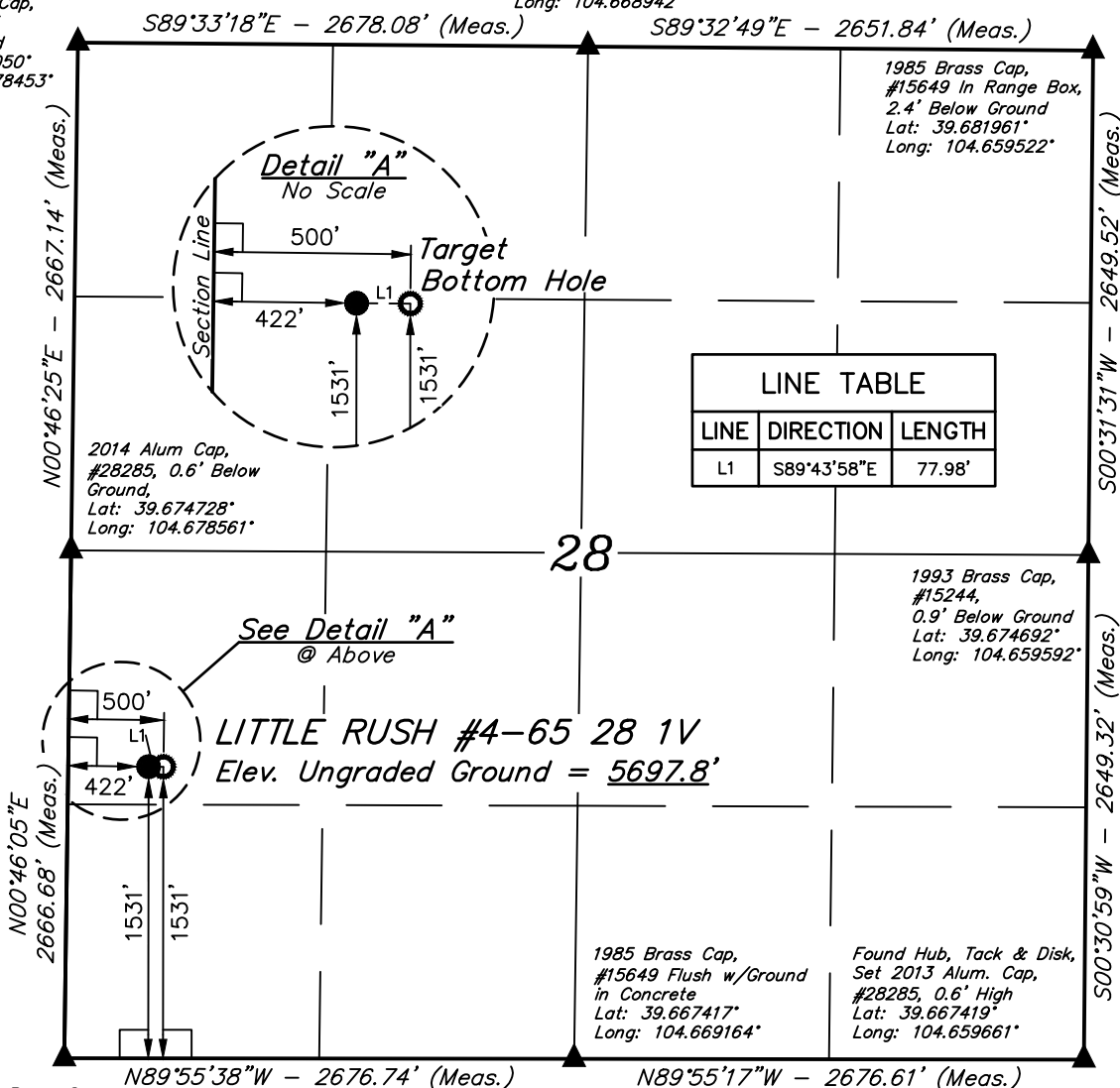
2014 Alum Cap,
#28285, 0.6' Below
Ground,
Lat: 39.674728°
Long: 104.678561°

1993 Brass Cap,
#15244,
0.9' Below Ground
Lat: 39.674692°
Long: 104.659592°

1985 Brass Cap,
#15649 Flush w/Ground
in Concrete
Lat: 39.667417°
Long: 104.669164°

Found Hub, Tack & Disk,
Set 2013 Alum. Cap,
#28285, 0.6' High
Lat: 39.667419°
Long: 104.659661°

1998 Brass Cap,
#13327 0.6' Below Ground
Lat: 39.667411°
Long: 104.678669°



PDOP = 1.2



NAD 83 (SURFACE LOCATION)	NAD 83 (TARGET BOTTOM HOLE)
LATITUDE = 39°40'17.82" (39.671617)	LATITUDE = 39°40'17.81" (39.671614)
LONGITUDE = 104°40'37.59" (104.677108)	LONGITUDE = 104°40'36.60" (104.676833)
NAD 27 (SURFACE LOCATION)	NAD 27 (TARGET BOTTOM HOLE)
LATITUDE = 39°40'17.86" (39.671628)	LATITUDE = 39°40'17.86" (39.671628)
LONGITUDE = 104°40'35.70" (104.676583)	LONGITUDE = 104°40'34.71" (104.676308)
STATE PLANE NAD 83 (CO. CEN.)	STATE PLANE NAD 83 (CO. CEN.)
N: 1670563.77 E: 3231637.47	N: 1670564.27 E: 3231715.43
STATE PLANE NAD 27 (CO. CEN.)	STATE PLANE NAD 27 (CO. CEN.)
N: 670556.21 E: 2231791.39	N: 670556.71 E: 2231869.35

CERTIFICATE
THIS IS TO CERTIFY THAT THE ABOVE PLAT WAS PREPARED FROM FIELD NOTES OF ACTUAL SURVEYS MADE BY ME OR UNDER MY SUPERVISION, AND THAT THE SAME ARE TRUE AND CORRECT TO THE BEST OF MY KNOWLEDGE AND BELIEF.

REGISTERED LAND SURVEYOR
REGISTRATION NO. 28285
STATE OF COLORADO

REV: 01 01-31-17 D.COX (ADD BOTTOM HOLE)

BASIS OF BEARINGS
BASIS OF BEARINGS IS A G.P.S. OBSERVATION

BASIS OF ELEVATION

BENCHMARK 374 LOCATED ON THE SECTION LINE BETWEEN SECTIONS 12 & 13, T5S, R64W, 6th P.M., TAKEN FROM 1988 PUBLISHED DATUM BY THE UNITED STATES DEPARTMENT OF THE INTERIOR, GEOLOGICAL SURVEY AS BEING 6054.61 FEET.

UELS, LLC

Corporate Office * 85 South 200 East
Vernal, UT 84078 * (435) 789-1017



ConocoPhillips Company

LITTLE RUSH #4-65 28 1V
NW 1/4 SW 1/4, SECTION 28, T4S, R65W, 6th P.M.
ARAPAHOE, COLORADO

SURVEYED BY	DALLAS NIELSEN	01-18-17	SCALE
DRAWN BY	J.M.C.	01-25-17	1" = 1000'

WELL LOCATION PLAT