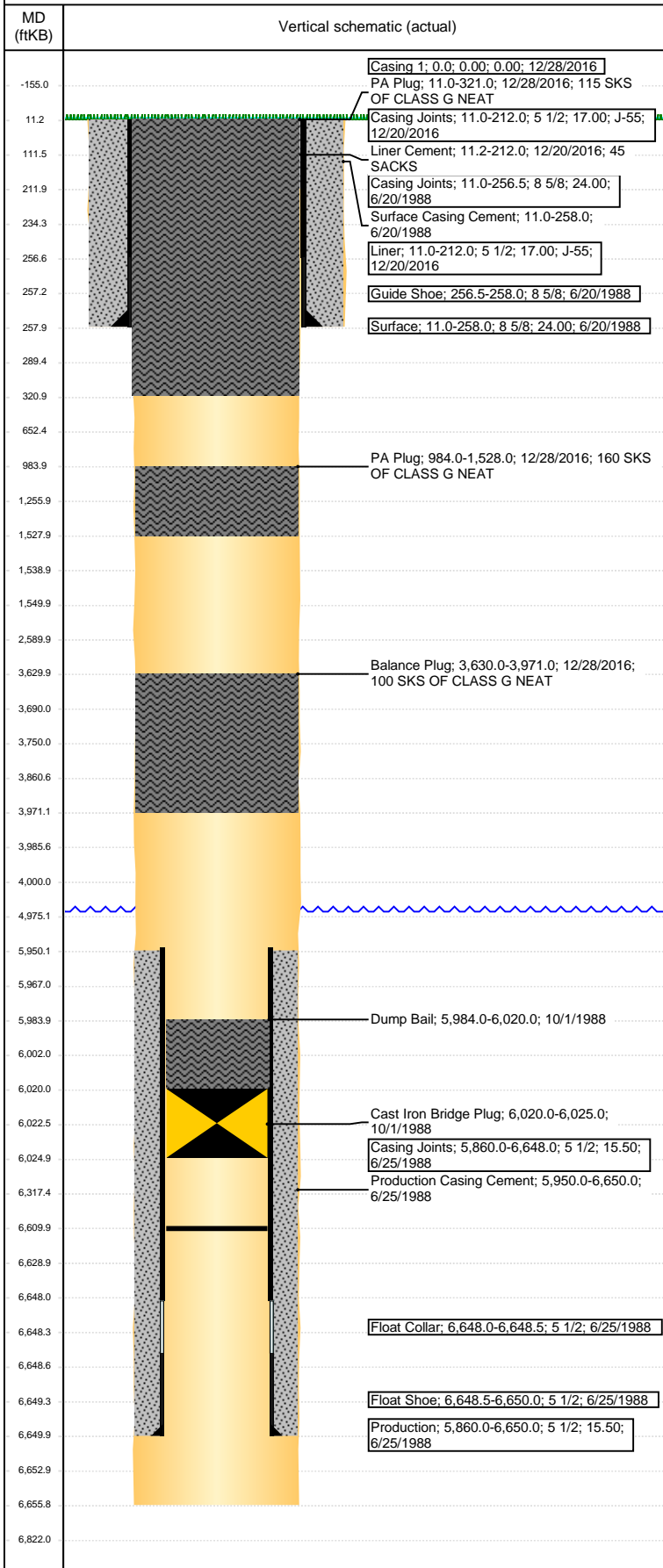


**Well Name: PRINCE 3-29**

VERTICAL - ORIGINAL HOLE, 2/8/2017 9:43:43 AM



Well Header						
API 05-123-13945	Business Unit DJ BASIN		District 15		Well Config VERTICAL	
Original KB Elevation (ft) 4,851	KB - GL / MSL (ftKB) 11.00		Spud Date 6/20/1988		P & A Date 10/1/1988	
Comment CSG PULLED DEPTH IS ESTIMATED. USED TOP OF PRODUCTION CEMENT						
Directions To Well						
Congressional Location						
Quarter 3	Quarter 4	Section 29	Township 9	Twnshp N/S Dir N	Range 58	Range E/W Dir W
Bottom Hole Location						
North-South Distance (ft)		From N or S Line		East-West Distance (ft)		From E or W Line
Plug Back Total Depths						
Date	Depth (ftKB)	Method		Com		
6/29/1988	6,610.0	CASED HOLE LOG		DEPTH LOGGER ON CBL		
Wellbore Sections						
Section Des		Size (in)		Act Top, MD (ftKB)		Act Btm, MD (ftKB)
SURFACE		12 1/4		11		258
PRODUCTION		7 7/8		258		6,656
Zone Statuses						
Zone Name	Status Date	Status	Fluid Type	Job	Prod Method	
Casing Strings						
<des>, <depth>ftKB						
Casing Description	Run Date	OD (in)	Wt/Len (l...	Grade	Top, MD (ft...	MD (ftKB)
	12/28/2016					
Liner, 212.0ftKB						
Casing Description	Run Date	OD (in)	Wt/Len (l...	Grade	Top, MD (ft...	MD (ftKB)
Liner	12/20/2016	5 1/2	17.00	J-55	11.0	212.0
Surface, 258.0ftKB						
Casing Description	Run Date	OD (in)	Wt/Len (l...	Grade	Top, MD (ft...	MD (ftKB)
Surface	6/20/1988	8 5/8	24.00		11.0	258.0
Production, 6,650.0ftKB						
Casing Description	Run Date	OD (in)	Wt/Len (l...	Grade	Top, MD (ft...	MD (ftKB)
Production	6/25/1988	5 1/2	15.50		11.0	6,650.0
Cement						
Description				Top Depth (ftKB)		Bottom Depth (ftKB)
Surface Casing Cement				11.0		258.0
Description				Top Depth (ftKB)		Bottom Depth (ftKB)
Production Casing Cement				5,950.0		6,650.0
Description				Top Depth (ftKB)		Bottom Depth (ftKB)
Dump Bail				5,984.0		6,020.0
Description				Top Depth (ftKB)		Bottom Depth (ftKB)
Cement Plug				3,750.0		4,000.0
Description				Top Depth (ftKB)		Bottom Depth (ftKB)
Cement Plug				11.0		1,550.0
Description				Top Depth (ftKB)		Bottom Depth (ftKB)
Description				Top Depth (ftKB)		Bottom Depth (ftKB)
Liner Cement				11.2		212.0
Description				Top Depth (ftKB)		Bottom Depth (ftKB)
Balance Plug				3,630.0		3,971.0
Description				Top Depth (ftKB)		Bottom Depth (ftKB)
PA Plug				984.0		1,528.0
Description				Top Depth (ftKB)		Bottom Depth (ftKB)
PA Plug				11.0		321.0
Tubing Strings						
Tubing Description		Run Date	String...	ID (in)	Wt (lb/ft)	Grade
						Len (ft)
						Set De...
Other In Hole						
Run Date	Des			OD (in)	Top (ftKB)	Btm (ftKB)
10/1/1988	Cast Iron Bridge Plug			4.9	6,020.0	6,025.0
Logs						
Date	Type				Top, MD (ftKB)	Btm, MD (ftKB)
6/29/1988	CEMENT BOND				5,827.0	6,604.0