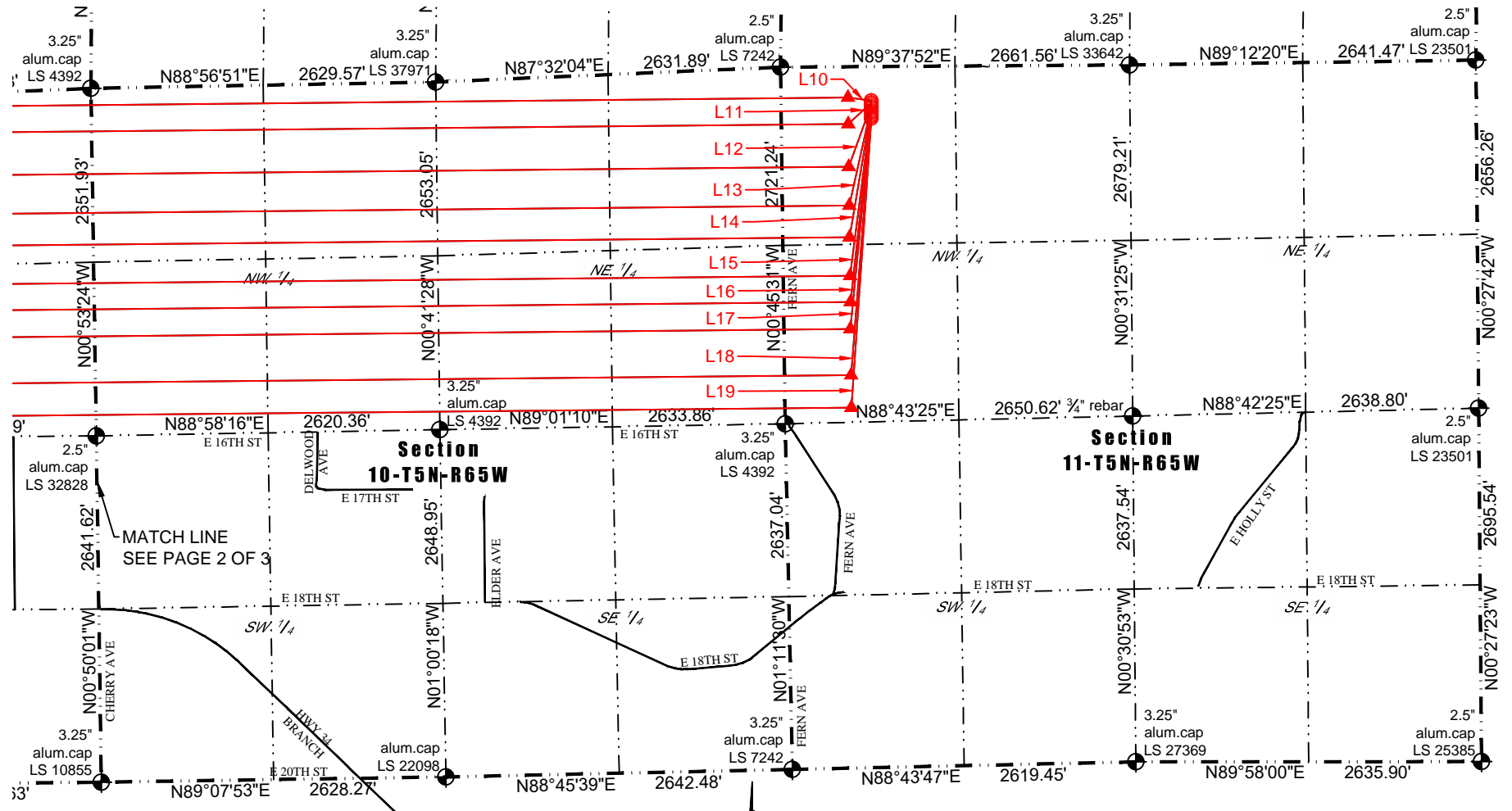




Washburn Land Surveying
www.WashburnSurveying.com
970-232-9645

MULTI-WELL PLAN FERN 5N65W11EJ PAD

SECTION: 11
TOWNSHIP: 5N
RANGE: 65W
6TH P.M.
WELD COUNTY, CO



- LEGEND:**
- ALIQUOT CORNER AS DESCRIBED
 - SURFACE HOLE LOCATION (SHL)
 - ENTRY POINT (EP)
 - BOTTOM HOLE LOCATION (BHL)



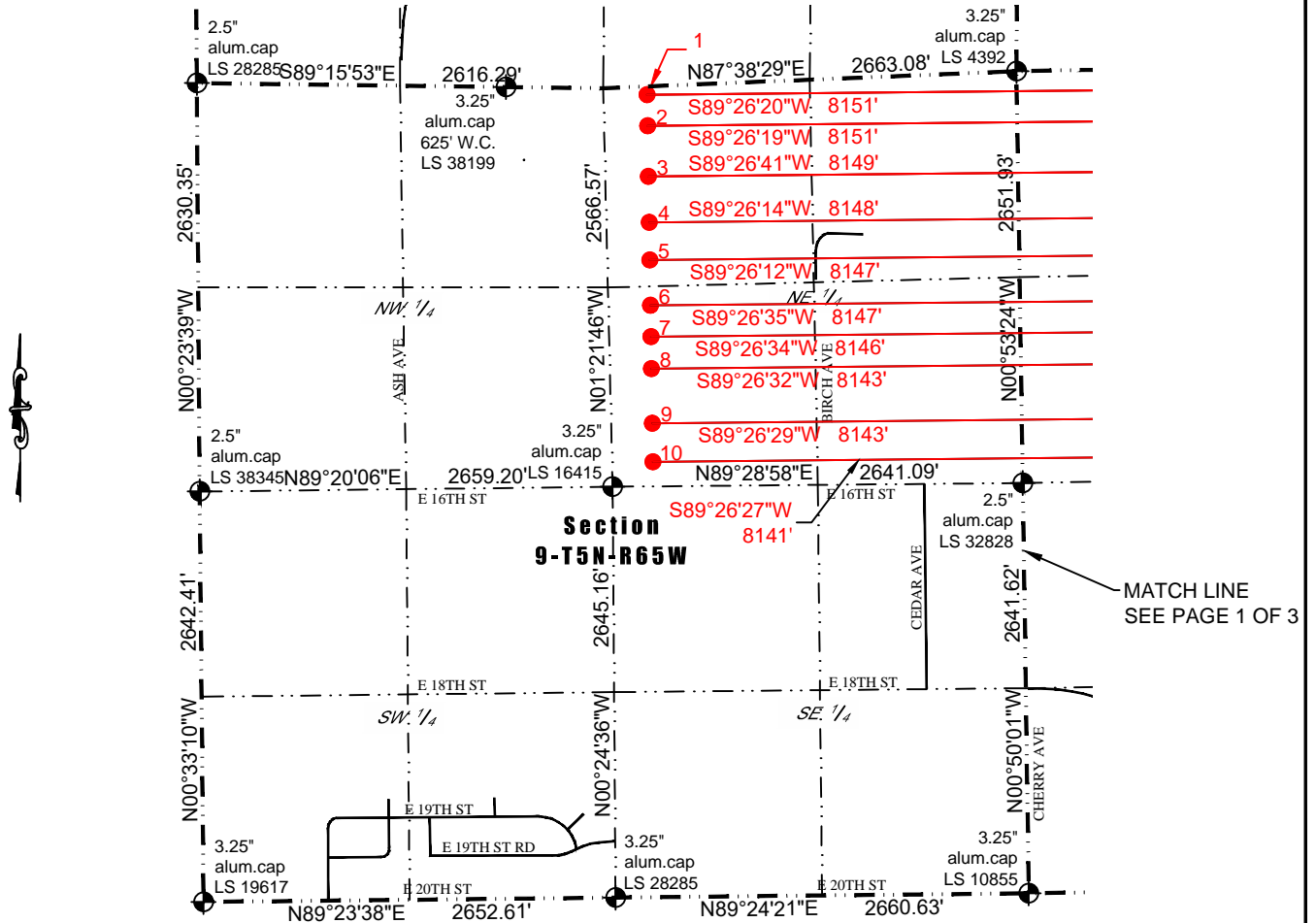
DATE: 1/13/2017 SHEET 1 OF 4



Washburn Land Surveying
www.WashburnSurveying.com
970-232-9645

MULTI-WELL PLAN FERN 5N65W11EJ PAD

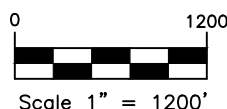
SECTION: 11
TOWNSHIP: 5N
RANGE: 65W
6TH P.M.
WELD COUNTY, CO



#	WELL NAME	BHL FOOTAGES				BHL LAT	BHL LONG	BHL S-T-R	BHL 1/4 1/4
1	FERN 11U-204	53	FNL	2380	FEL	N40.420655°	W104.667540°	9-5-65	NWNE
2	FERN 11U-434	254	FNL	2380	FEL	N40.420103°	W104.667536°	9-5-65	NWNE
3	FERN 11U-334	580	FNL	2380	FEL	N40.419208°	W104.667529°	9-5-65	NWNE
4	FERN 11V-214	875	FNL	2380	FEL	N40.418398°	W104.667522°	9-5-65	NWNE
5	FERN 11V-304	1118	FNL	2380	FEL	N40.417731°	W104.667517°	9-5-65	NWNE
6	FERN 11V-204	1410	FNL	2380	FEL	N40.416929°	W104.667510°	9-5-65	SWNE
7	FERN 11V-334	1611	FNL	2380	FEL	N40.416377°	W104.667506°	9-5-65	SWNE
8	FERN 11V-234	1817	FNL	2380	FEL	N40.415811°	W104.667501°	9-5-65	SWNE
9	FERN 11W-314	2168	FNL	2380	FEL	N40.414848°	W104.667493°	9-5-65	SWNE
10	FERN 11W-214	2417	FNL	2380	FEL	N40.414164°	W104.667488°	9-5-65	SWNE

Line Table		
Line #	Length	Bearing
L10	180'	N82°27'56"W
L11	239'	S47°16'32"W
L12	505'	S19°58'57"W
L13	772'	S12°36'53"W
L14	995'	S09°37'22"W
L15	1270'	S07°18'29"W
L16	1454'	S06°16'18"W
L17	1644'	S05°33'14"W
L18	1978'	S04°26'57"W
L19	2212'	S03°56'44"W

- LEGEND:
- ALIQUOT CORNER AS DESCRIBED
 - SURFACE HOLE LOCATION (SHL)
 - ENTRY POINT (EP)
 - BOTTOM HOLE LOCATION (BHL)

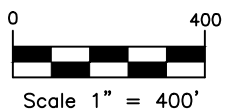
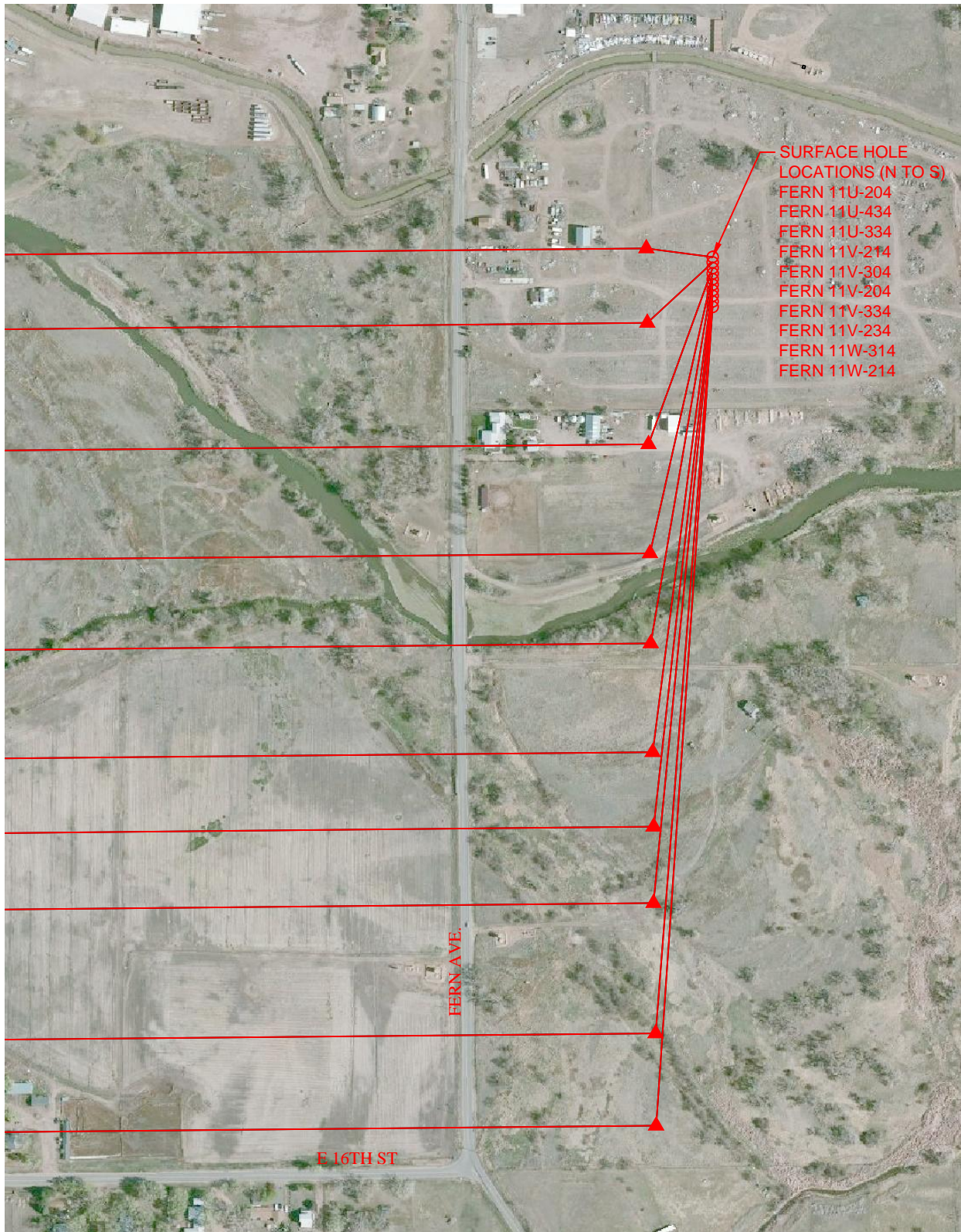




Washburn Land Surveying
www.WashburnSurveying.com
970-232-9645

MULTI-WELL PLAN FERN 5N65W11EJ PAD

SECTION: 11
TOWNSHIP: 5N
RANGE: 65W
6TH P.M.
WELD COUNTY, CO





Washburn Land Surveying
www.WashburnSurveying.com
970-232-9645

MULTI-WELL PLAN FERN 5N65W11EJ PAD

SECTION: 11
TOWNSHIP: 5N
RANGE: 65W
6TH P.M.
WELD COUNTY, CO

