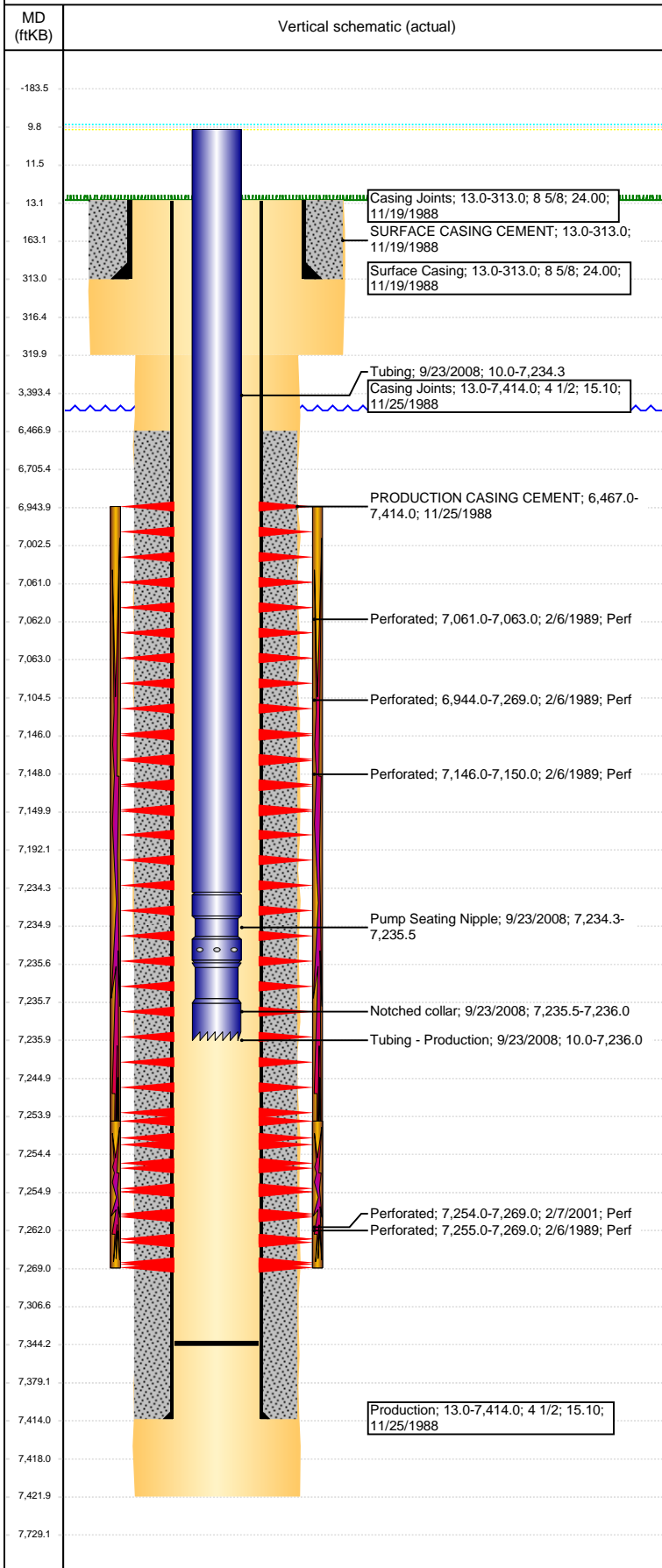


Wellbore Schematic Input Report

Well Name: WEBER PMK16-06

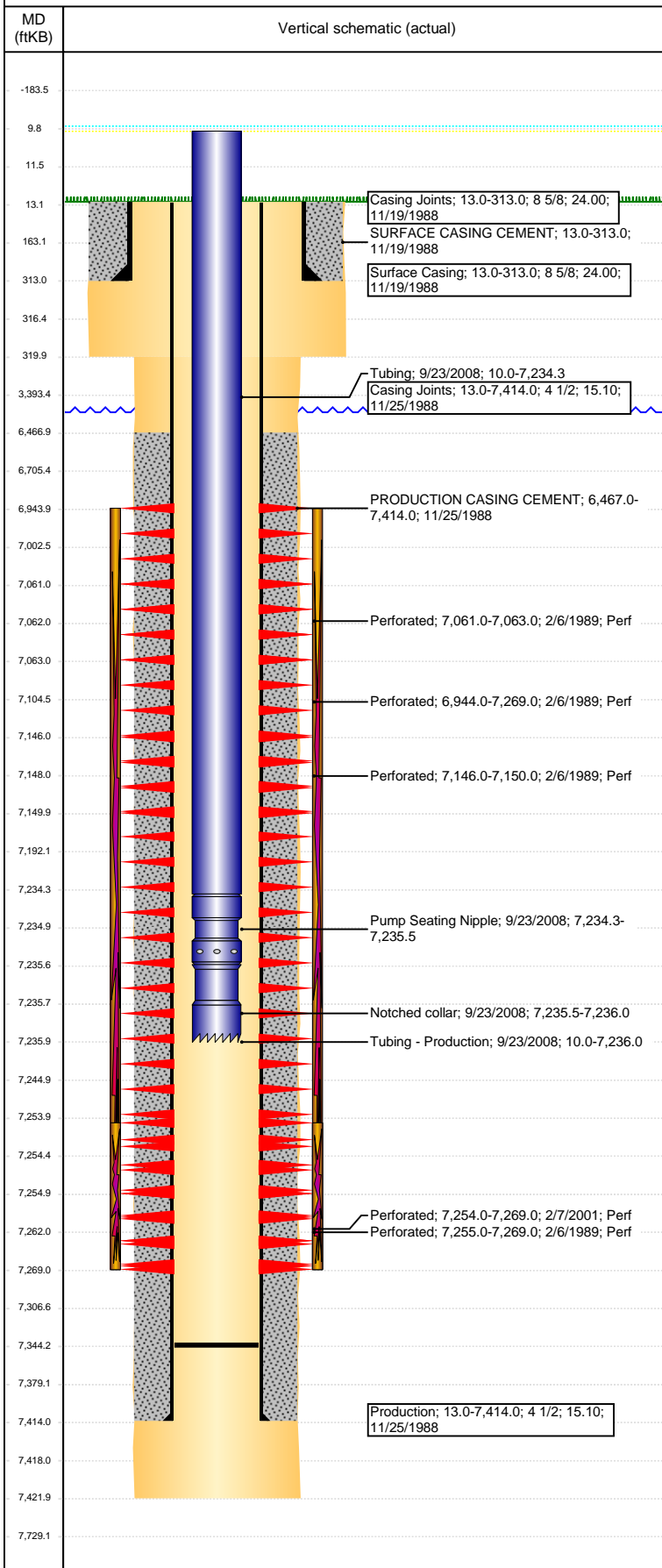
VERTICAL - ORIGINAL HOLE, 2/7/2017 7:34:00 AM



Well Header								
API 05-123-14046		Business Unit DJ BASIN		District 15		Well Config VERTICAL		
Original KB Elevation (ft) 4,746		KB - GL / MSL (ftKB) 13.00		Spud Date 11/19/1988		P & A Date		
Comment								
Directions To Well RD 31 & 46, W 5 /10, S 3/10, W INTO.								
Congressional Location								
Quarter 3 SE		Quarter 4 NW		Section 16	Township 4	Twnshp N/S Dir N	Range 66	Range E/W Dir W
Bottom Hole Location								
North-South Distance (ft)			From N or S Line		East-West Distance (ft)		From E or W Line	
Plug Back Total Depths								
Date		Depth (ftKB)	Method			Com		
11/25/1988		7,387.0	CASING TALLY			SET FLOAT		
9/17/2004		7,337.0	TAG			C/O WELL LAND TBG		
9/23/2008		7,344.0	TAG			C/O LAND TBG		
Wellbore Sections								
Section Des			Size (in)		Act Top, MD (ftKB)		Act Btm, MD (ftKB)	
SURFACE			12 1/4		13		320	
PRODUCTION			7 7/8		320		7,422	
Zone Statuses								
Zone Name		Status Date	Status	Fluid Type	Job	Prod Method		
CODELL		2/17/1989	PR		DRILLING/CO...			
CODELL		2/17/2001	PR		RE-FRAC, 2/5/...			
CODELL		10/27/2008	PR		TRI-FRAC, 8/2...			
NIOBRARA		2/17/1989	PR		DRILLING/CO...			
Casing Strings								
Surface Casing, 313.0ftKB								
Casing Description		Run Date	OD (in)	Wt/Len (l...	Grade	Top, MD (ft...	MD (ftKB)	
Surface Casing		11/19/1988	8 5/8	24.00		13.0	313.0	
Production, 7,414.0ftKB								
Casing Description		Run Date	OD (in)	Wt/Len (l...	Grade	Top, MD (ft...	MD (ftKB)	
Production		11/25/1988	4 1/2	15.10		13.0	7,414.0	
Cement								
Description					Top Depth (ftKB)		Bottom Depth (ftKB)	
SURFACE CASING CEMENT					13.0		313.0	
Description					Top Depth (ftKB)		Bottom Depth (ftKB)	
PRODUCTION CASING CEMENT					6,467.0		7,414.0	
Tubing Strings								
Tubing Description		Run Date	String...	ID (in)	Wt (lb/ft)	Grade	Len (ft)	Set De...
Tubing - Production		9/17/2004	2 3/8	2.00	4.70	J-55	7,232.00	
Tubing Description		Run Date	String...	ID (in)	Wt (lb/ft)	Grade	Len (ft)	Set De...
Tubing - Frac string		9/2/2008	2 7/8	2.44	6.50	N-80	7,208.66	
Tubing Description		Run Date	String...	ID (in)	Wt (lb/ft)	Grade	Len (ft)	Set De...
Tubing - Production		9/23/2008	2 3/8	2.00	4.70	J-55	7,226.00	
Tubing Components								
Item Des		OD (in)	Wt (lb/ft)	Grade	Jts	Len (ft)	Btm (ftKB)	Btm (TVD) (ftKB)
Tubing		2 3/8	4.70	J-55	229	7,224.35	7,234.3	
Pump Seating Nipple		2 3/8			1	1.20	7,235.5	
Notched collar		2 3/8	4.70	J-55	1	0.45	7,236.0	
Other In Hole								
Run Date		Des			OD (in)	Top (ftKB)	Btm (ftKB)	
Logs								
Date		Type				Top, MD (ftKB)	Btm, MD (ftKB)	
11/25/1988		Compensated Density				3,641.0	7,421.0	
2/2/1989		Sonic				6,370.0	7,346.0	

Well Name: WEBER PMK16-06

VERTICAL - ORIGINAL HOLE, 2/7/2017 7:34:02 AM



Perforation Data					
Linked Zone	Bnch/St g	Sum of Entered Shot Total	Top (ftKB)	Btm (ftKB)	Date
NIOBRARA, ORIGINAL HOLE	A	3	6,944.00	7,269.00	2/6/1989
NIOBRARA, ORIGINAL HOLE	B	2	7,061.00	7,063.00	2/6/1989
NIOBRARA, ORIGINAL HOLE	C	2	7,146.00	7,150.00	2/6/1989
CODELL, ORIGINAL HOLE		60	7,254.00	7,269.00	2/7/2001
CODELL, ORIGINAL HOLE		8	7,255.00	7,269.00	2/6/1989
Total (Sum)		75			
Stimulation Intervals					
Start Date 2/7/1989		Primary Job Type DRILLING/COMPLETION - ORIGINAL			
Technical Result		Tech Result Details		Tech Result Note	
Comment					
Start Date 2/14/2001		Primary Job Type RE-FRAC			
Technical Result		Tech Result Details		Tech Result Note	
Comment					
Start Date 9/15/2008		Primary Job Type TRI-FRAC			
Technical Result Success		Tech Result Details According to Plan		Tech Result Note	
Comment CTF: TREATMENT WENT WELL. LOST PUMP LATE IN 4#. FINISHED JOB @ 17.5 BPM.					