

HALLIBURTON

iCem® Service

HALLIBURTON ENERGY INSTITUTE

For: Bill Stone

Date: Saturday, January 14, 2017

3A

Ensign 121

Case 2

Job Date: Saturday, January 14, 2017

Sincerely,

Jacob Nelson

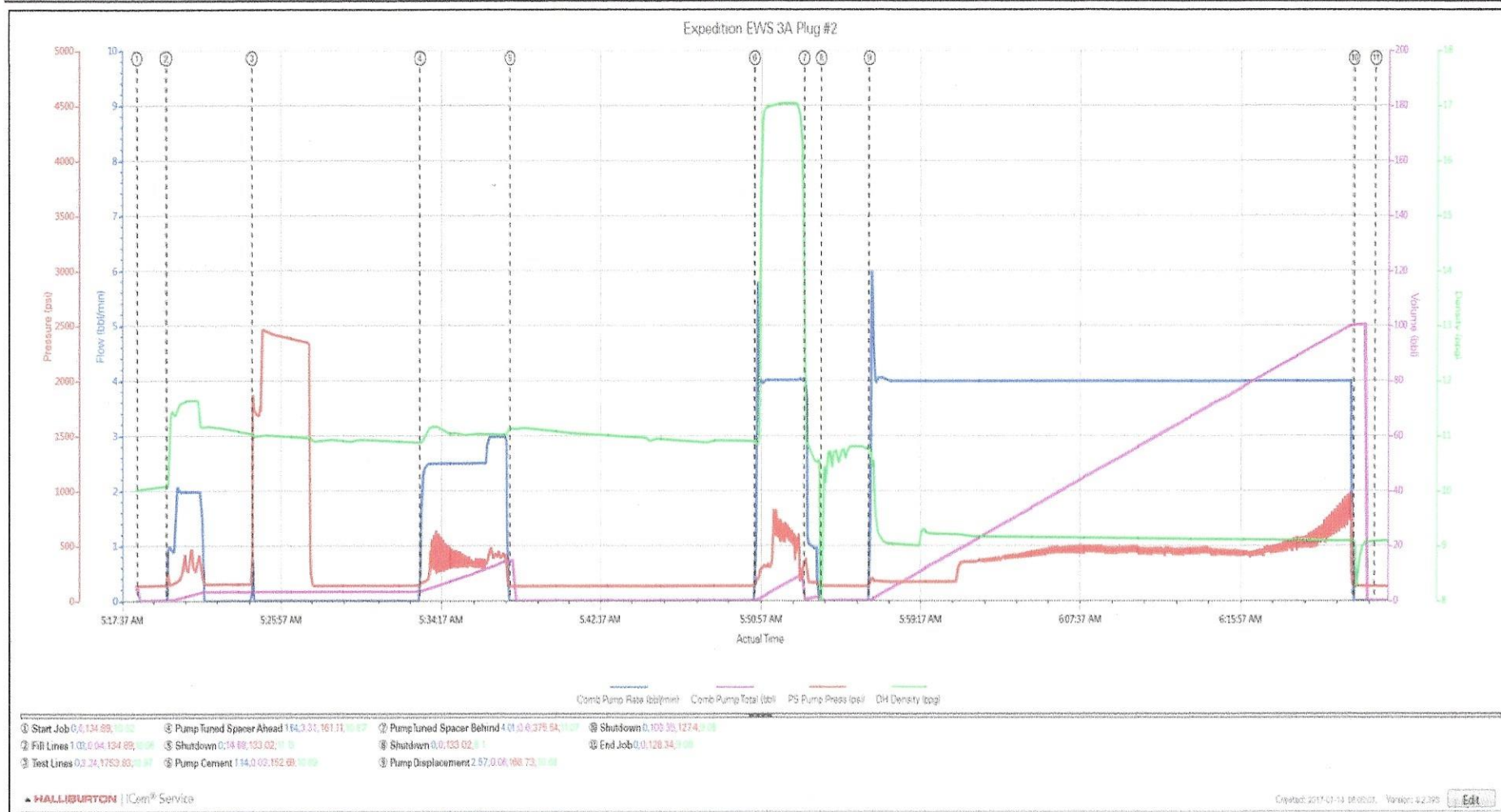
1.0 Real-Time Job Summary

1.1 Job Event Log

Type	Activity	Graph Label	Date	Time	Source	Comments
	Arrive at Loc		1/14/2017	03:30:00		Crew arrived on location. 1 Pickup, 1 Pump, and 1 440 cuft.
	Rig Up Equipment		1/14/2017	03:45:00		Went over a rig up JSA with personnel. Spot in trucks. Rigged up bulk equipment, hose, and iron to floor.
	Pre Job Safety Meeting		1/14/2017	04:35:00		Conducted safety meeting with all personnel involved with job.
	Blend Up Spacer		1/14/2017	04:45:00		Pre blend spacer behind and put in measuring tub to eliminate shutdown with cement in hole.
Event	Start Job	Start Job	1/14/2017	05:18:30	USER	Start recording data.
Event	Pump Spacer	Fill Lines	1/14/2017	05:20:03	USER	Fill lines with 2 bbls of Tuned Spacer at 11.0 ppg. Density verified with mud scale.
Event	Test Lines	Test Lines	1/14/2017	05:24:31	RTD Import	Electronic kickouts functioned properly. Tested lines 2500 psi.
Event	Pump Spacer Ahead	Pump Tuned Spacer Ahead	1/14/2017	05:33:19	USER	Pumped 13.5 bbls for a total of 15.5 bbls of Tuned Spacer ahead at 11.0 ppg. Density verified with mud scale.
Event	Shutdown	Shutdown	1/14/2017	05:37:55	USER	Shutdown to mix dry additives for mix water in cement.
Event	Pump Cement	Pump Cement	1/14/2017	05:50:41	USER	Pumped 8.8 bbls, 50 sks of cement at 17.0 ppg. Yield: 0.99, Gal/sk: 3.72. Density verified with mud scale
Event	Pump Spacer Behind	Pump Tuned Spacer Behind	1/14/2017	05:53:16	USER	Pumped 4.5 bbls of Tuned Spacer behind at 11.0 ppg. Density verified with mud scale.
Event	Shutdown	Shutdown	1/14/2017	05:54:10	USER	Shutdown to receive displacement mud to start displacement.
Event	Pump Displacement	Pump Displacement	1/14/2017	05:56:39	USER	Pumped 101 bbls of 9.1 ppg water based mud.
Event	Shutdown	Shutdown	1/14/2017	06:21:52	USER	Shutdown and opened release line.
Event	End Job	End Job	1/14/2017	06:23:00	USER	Thank you for choosing Halliburton cement and the crew of Jacob Nelson.
	POOH		1/14/2017	06:30:00		Rig pulled out of hole with 1 single and 4 90' stands at 10 ft/ min. Single and all stands pulled wet.

2.0 Attachments

2.1 Expedition Plug #2-Custom Results.png



iCem® Service

(v. 4.2.393)

Created: Saturday, January 14, 2017