

1.0 Real-Time Job Summary

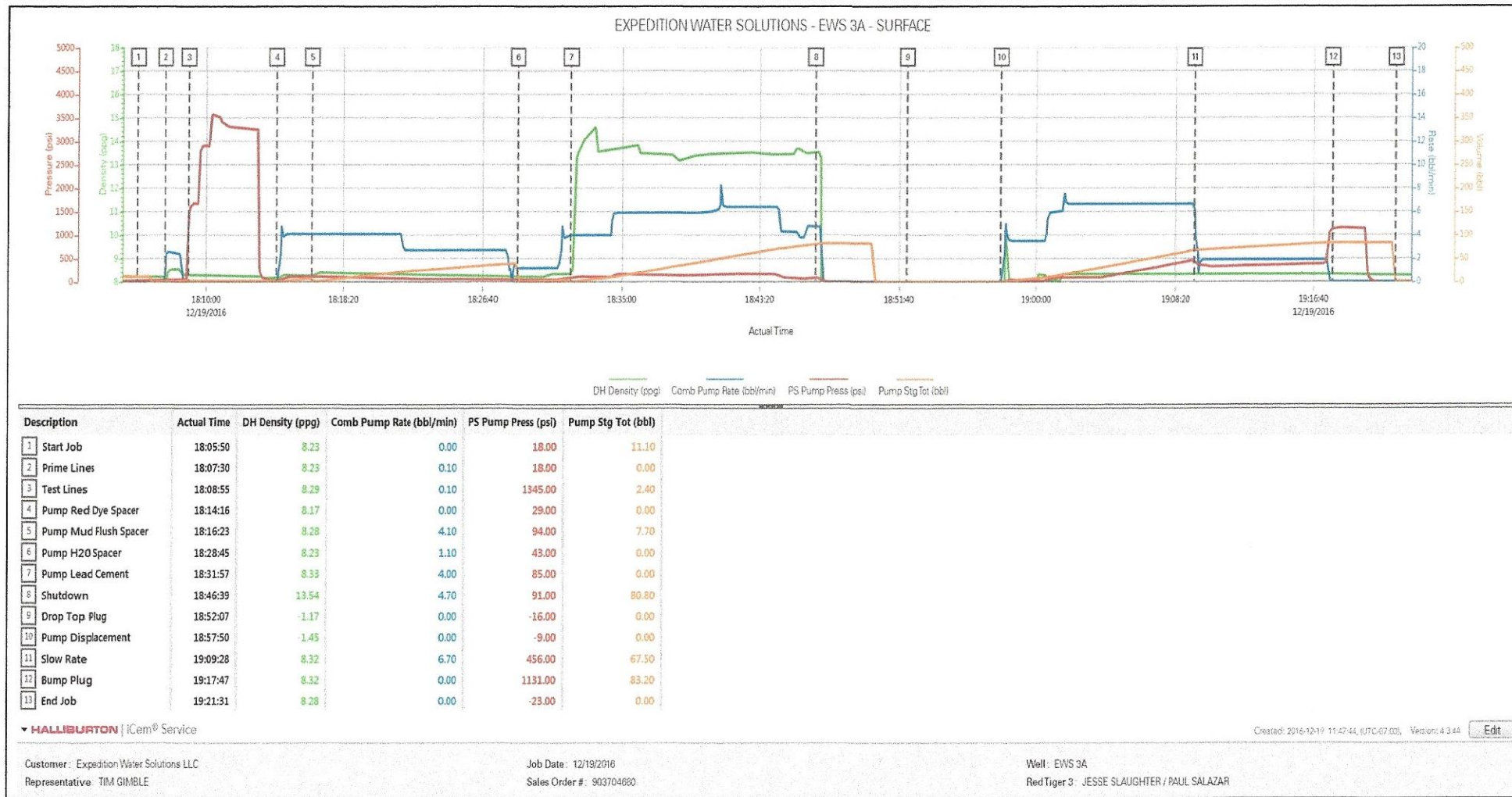
1.1 Job Event Log

Type	Seq. No.	Activity	Graph Label	Date	Time	Source	DH Density (ppg)	Comb Pump Rate (bbl/min)	PS Pump Press (psi)	Pump Stg Tot (bbl)	Comments
Event	1	Safety Meeting	Call Out	12/19/2016	10:00:00	USER					CALLED OUT TO RELIEVE JACOB AYERS AND CREW. PREVIOUS CREW ON LOCATION AT 08:00
Event	2	Safety Meeting	Crew Leave Yard	12/19/2016	12:00:00	USER					
Event	3	Safety Meeting	Arrive At Loc	12/19/2016	13:00:00	USER					RIG WAS RUNNING CASING UPON HES ARRIVAL
Event	4	Safety Meeting	Rig-Up Equipment	12/19/2016	15:00:00	USER					1 RED TIGER, 1 660 BULK TRUCK
Event	5	Safety Meeting	Pre-job Safety Meeting	12/19/2016	15:50:00	USER					
Event	6	Start Job	Start Job	12/20/2016	18:05:50	COM5					TD 1039 FT, TP 1043 FT, SHOE 41 FT, CSG 9.625 IN 36 LB/FT, HOLE 12.25 IN, MUD WT 9.1 PPG
Event	7	Start Job	Prime Lines	12/20/2016	18:07:30	COM5	8.33	2.0	56.0	2.0	FRESH WATER
Event	8	Test Lines	Test Lines	12/20/2016	18:08:55	COM5					TESTED LINES TO 3295 PSI PRESSURE HOLDING
Event	9	Pump Spacer 1	Pump Red Dye Spacer	12/20/2016	18:14:16	COM5	8.33	4.0	100.0	5.0	FRESH WATER WITH 2 LB RED DYE
Event	10	Pump Spacer 1	Pump Mud Flush Spacer	12/20/2016	18:16:23	COM5	8.4	4.0	78.0	40.0	FRESH WATER WITH 4 BAGS MUD FLUSH III
Event	11	Pump Spacer 2	Pump H2O Spacer	12/20/2016	18:28:45	COM5	8.33	4.0	120.0	5.0	FRESH WATER
Event	12	Pump Lead Cement	Pump Lead Cement	12/20/2016	18:31:57	COM5	13.5	6.0	115.0	96.1	310 SKS AT 13.5 PPG, 1.74 FT3/SK, 9.2 GAL/SK
Event	13	Shutdown	Shutdown	12/20/2016	18:46:39	USER					

Event	14	Drop Top Plug	Drop Top Plug	12/20/2016	18:52:07	COM5						PLUG LAUNCHED
Event	15	Pump Displacement	Pump Displacement	12/20/2016	18:57:50	COM5	8.33	6.0	290.0	77.5		FRESH WATER
Event	16	Pump Displacement	Slow Rate	12/20/2016	19:09:28	USER	8.33	2.0	395.0	67.5		SLOWED RATE 10 BBLS PRIOR TO CALCULATED DISPLACEMENT
Event	17	Bump Plug	Bump Plug	12/20/2016	19:17:47	COM5				1131.0		
Event	18	End Job	End Job	12/20/2016	19:21:31	COM5						HES RETURNED 1 BBL H3O TO PUMP CHECKING FLOATS. HES RETURNED 10 BBLS CEMENT TO SURFACE.
Event	19	Safety Meeting	Crew Leave Location	12/20/2016	21:00:00	USER						THANK YOU FOR USING HALLIBURTON CEMENT DEPARTMENT. JESSE SLAUGHTER AND CREW.

2.0 Attachments

2.1 CHART.png



2.2 NO LEGEND.png

