

REV: 1 11-18-16 K.B. (PAD MOVE)

LEGEND:

 **PROPOSED LOCATION**



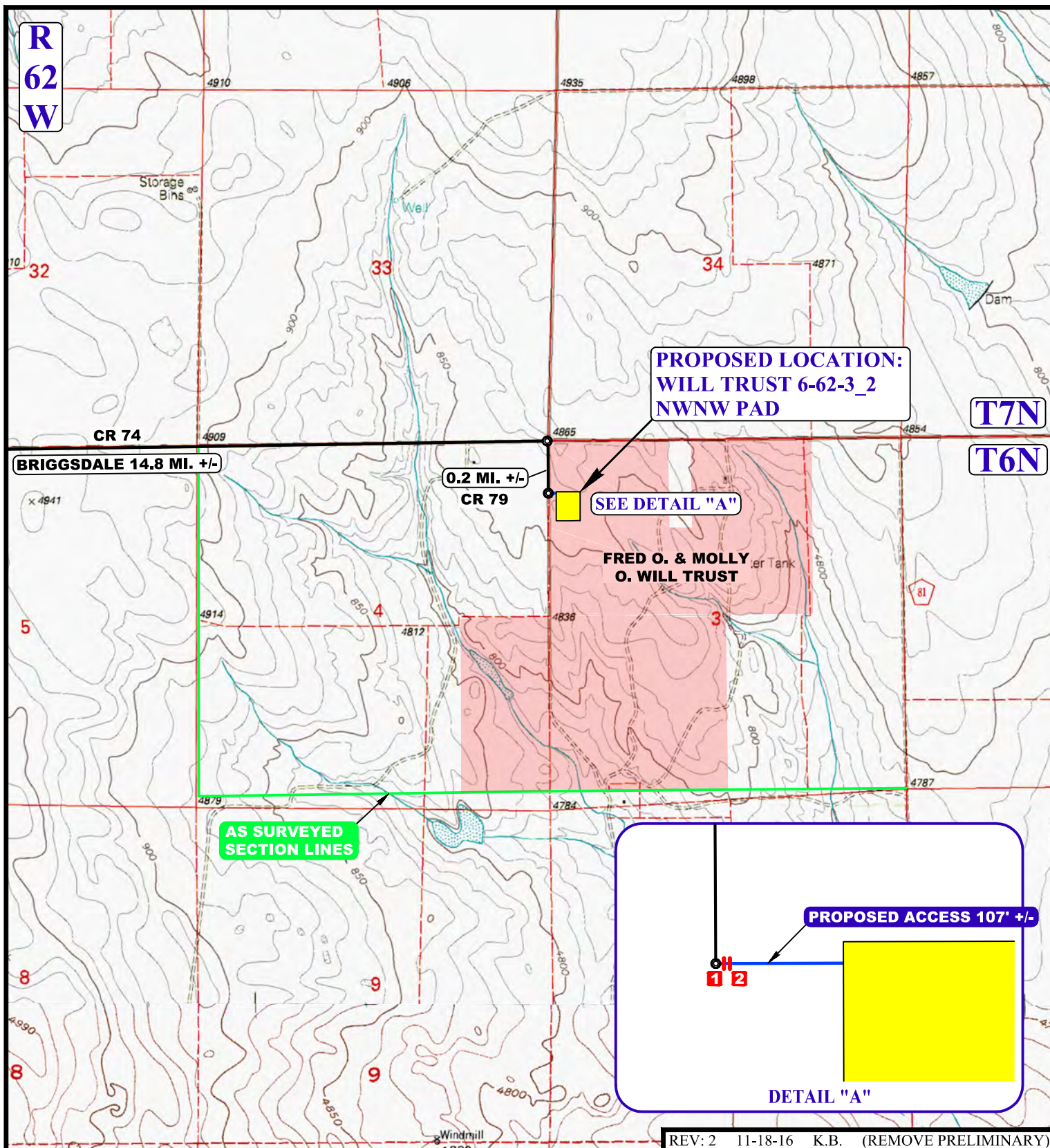
UELS, LLC
Corporate Office * 85 South 200 East
Vernal, UT 84078 * (435) 789-1017



BILL BARRETT CORPORATION

WILL TRUST 6-62-3_2 NWNW PAD
LOT 4, SECTION 3, T6N, R62W, 6th P.M.
WELD COUNTY, COLORADO

SURVEYED BY	C.M.	10-11-16	SCALE
DRAWN BY	J.L.G.	12-28-15	1 : 100,000
ACCESS ROAD MAP			TOPO A



REV: 2 11-18-16 K.B. (REMOVE PRELIMINARY)

NOTE: PARCEL DATA SHOWN HAS BEEN OBTAINED FROM VARIOUS SOURCES AND SHOULD BE USED FOR MAPPING, GRAPHIC AND PLANNING PURPOSES ONLY. NO WARRANTY IS MADE BY UINTAH ENGINEERING AND LAND SURVEYING (UELS) FOR ACCURACY OF THE PARCEL DATA.

LEGEND:

- EXISTING ROAD
- - - PROPOSED ROAD
- AS SURVEYED SECTION LINES
- 1 INSTALL 18" CULVERT
- 2 INSTALL CATTLE GUARD



UELS, LLC
Corporate Office * 85 South 200 East
Vernal, UT 84078 * (435) 789-1017



BILL BARRETT CORPORATION

**WILL TRUST 6-62-3 2 NWNW PAD
LOT 4, SECTION 3, T6N, R62W, 6th P.M.
WELD COUNTY, COLORADO**

SURVEYED BY	C.M.	10-11-16	SCALE
DRAWN BY	J.L.G.	12-28-15	1 : 24,000
ACCESS ROAD MAP			TOPO B