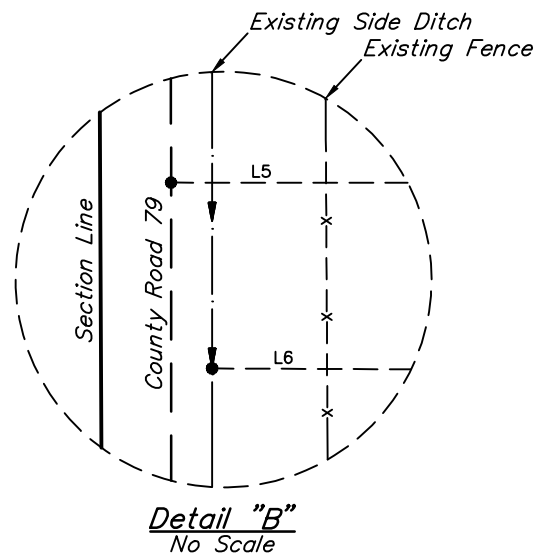
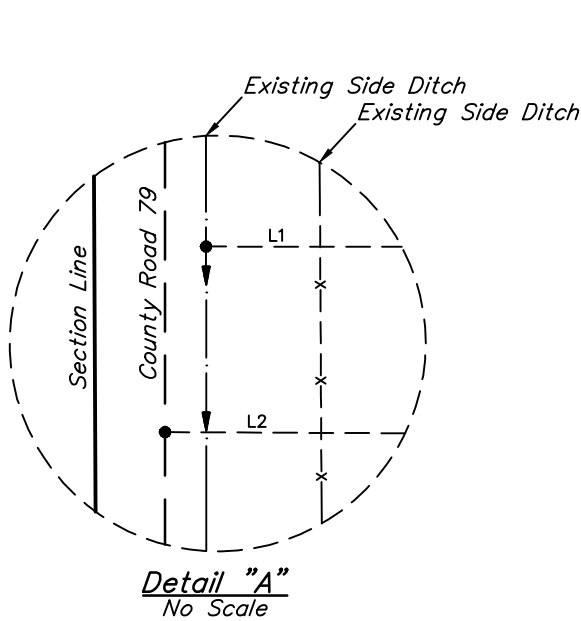
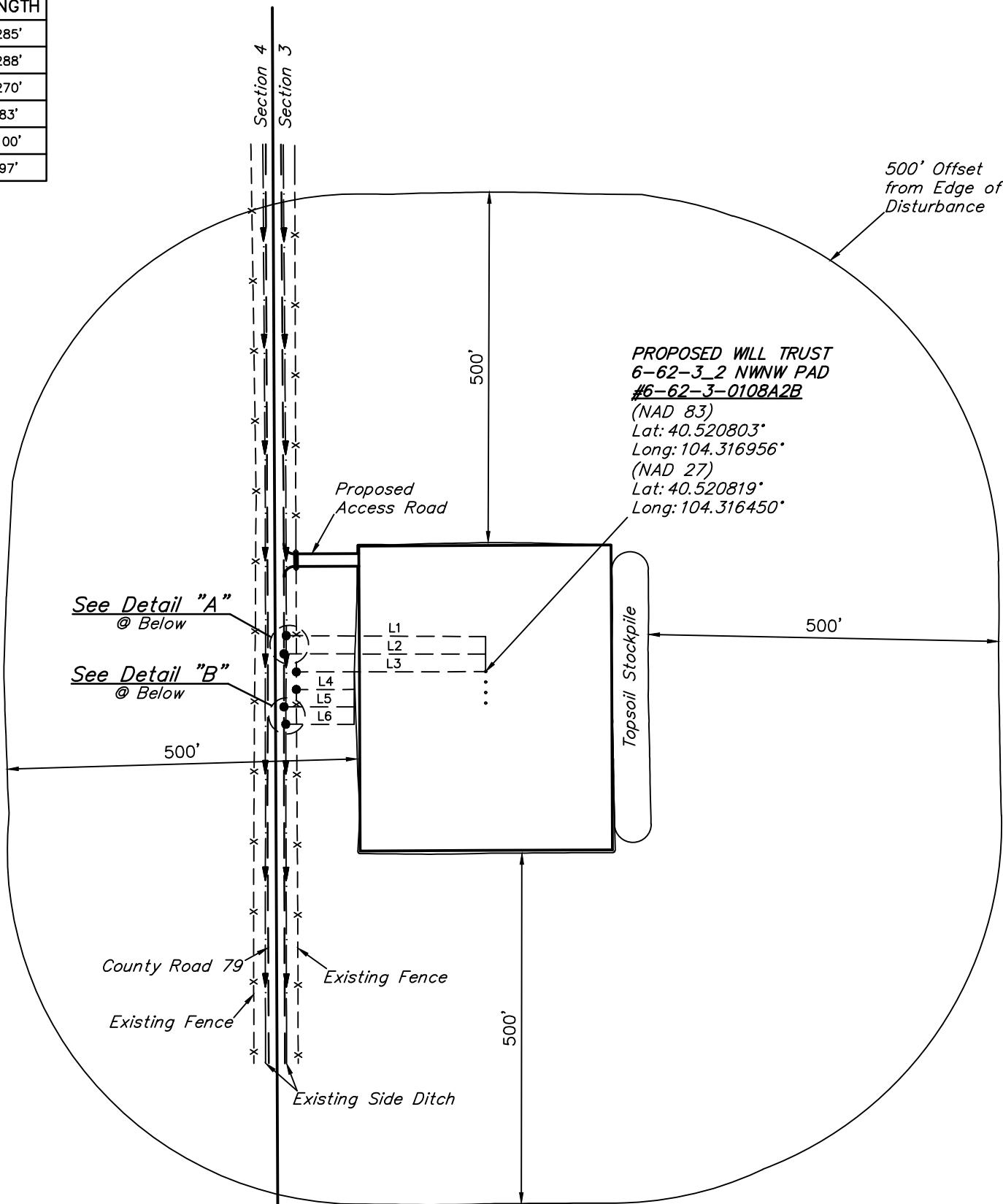


LINE TABLE		
LINE	DIRECTION	LENGTH
L1	WEST	285'
L2	WEST	288'
L3	WEST	270'
L4	WEST	83'
L5	WEST	100'
L6	WEST	97'



REV: 2 11-18-16 K.B. (PAD MOVE)

BILL BARRETT CORPORATION

**WILL TRUST 6-62-3 2 NWNW PAD
LOT 4, SECTION 3, T6N, R62W, 6th P.M.
WELD COUNTY, COLORADO**

SURVEYED BY	CHAD MEIERS	10-11-16	SCALE
DRAWN BY	K.B.	12-31-15	1" = 200'
LOCATION DRAWING		FIGURE #4	



UELS, LLC
Corporate Office * 85 South 200 East
Vernal, UT 84078 * (435) 789-1017