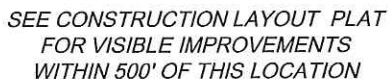


T. 5 S.



0 600 1200
GRAPHIC SCALE IN FEET
1 INCH = 1200 FEET

I, MICHAEL J. LANGHORNE, A REGISTERED LAND SURVEYOR IN THE STATE OF COLORADO DO HEREBY CERTIFY THAT THE SURVEY SHOWN HEREON WAS PREPARED UNDER MY DIRECT SUPERVISION AND HAS BEEN STAKED ON THE GROUND AS SHOWN ON THE PLAT AND CHECKING THAT THIS MAP IS A TRUE REPRESENTATION THEREOF.

REFERENCES

- REVISED: 1/20/17

BOOKCLIFF
Survey Services, Inc.

NOTES

- WELL LOCATION PLAT Prepared for:



TEP Rocky Mountain LLC

SW1/4 NE1/4, SECTION 23
T. 5 S., R. 97 W. of the 6th. P.M.
GARFIELD COUNTY, COLORADO