

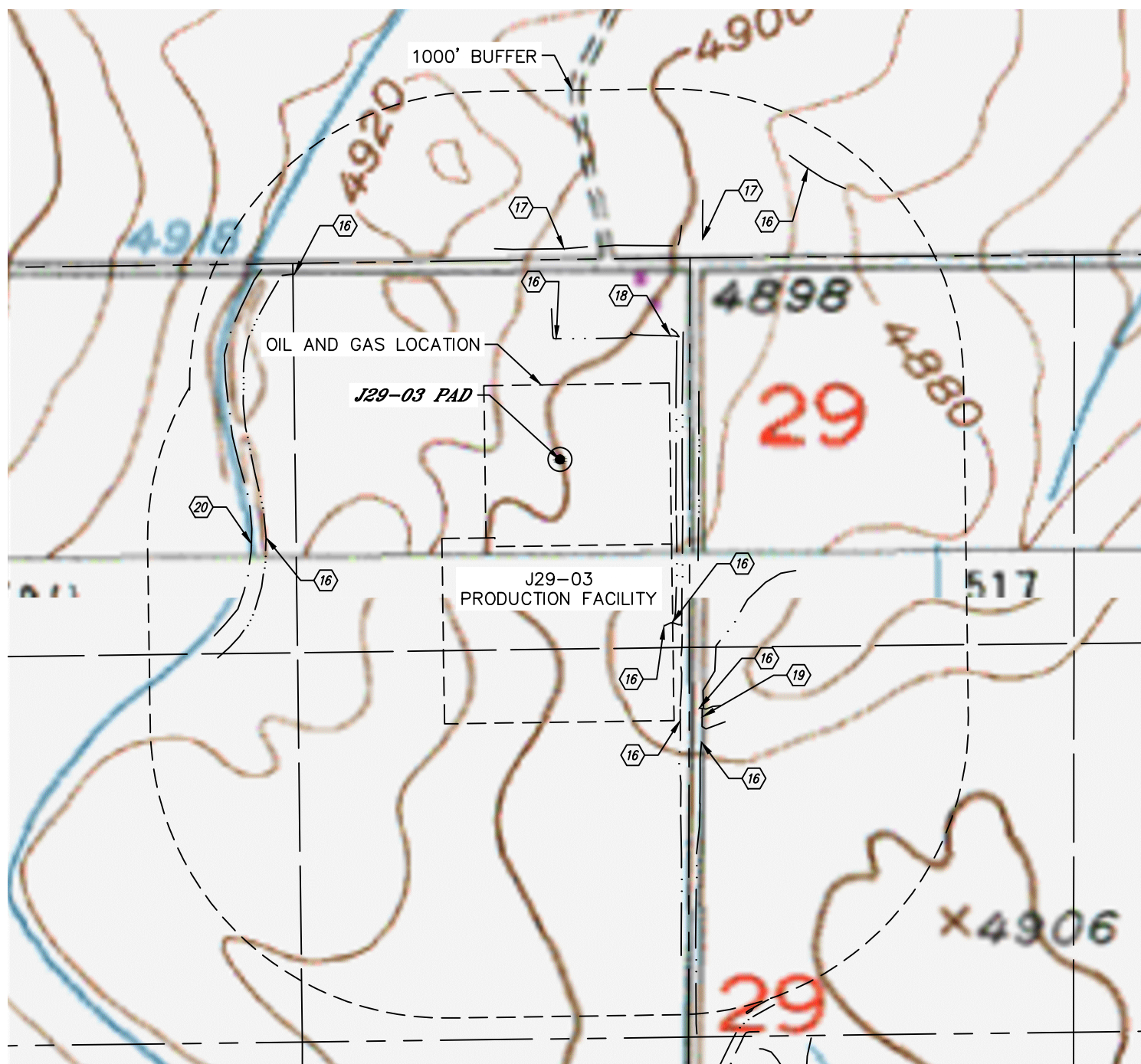


Lat40°, Inc. 6250 W. 10th Street, Unit 2, Greeley, CO 970-515-5294

HYDROLOGY MAP

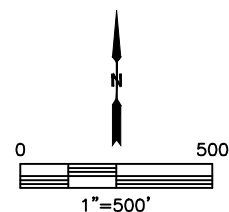
J29-03 PAD

SECTION: 29
TOWNSHIP: 5N
RANGE: 66W
6TH. P.M.
WELD COUNTY, CO



DISTANCES MEASURED FROM THE EDGE OF THE OIL AND GAS LOCATION.

- ①⑥ DITCH (2) INSIDE LOCATION, 86' E, 119' SE, 156' N, 597' W, 747' NW, 869' NE
- ①⑦ BORROW DITCH 21' E, 461' N, 502' NE
- ①⑧ POND 160' N
- ①⑨ LOW AREA 96' E
- ②⑩ LOVELAND AND GREELEY CANAL 646' W



DATE: 10/5/2016
PROJECT#: 2016030