

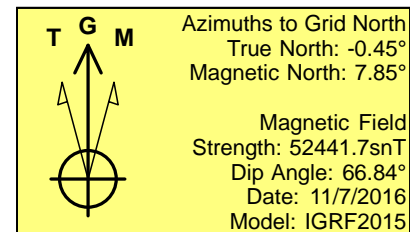
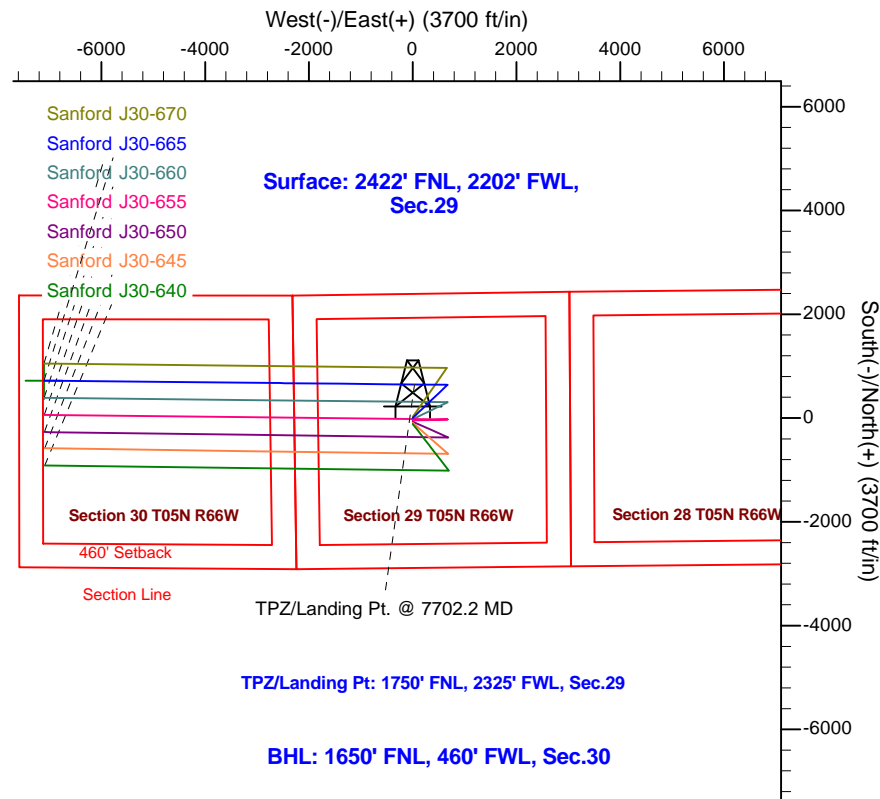
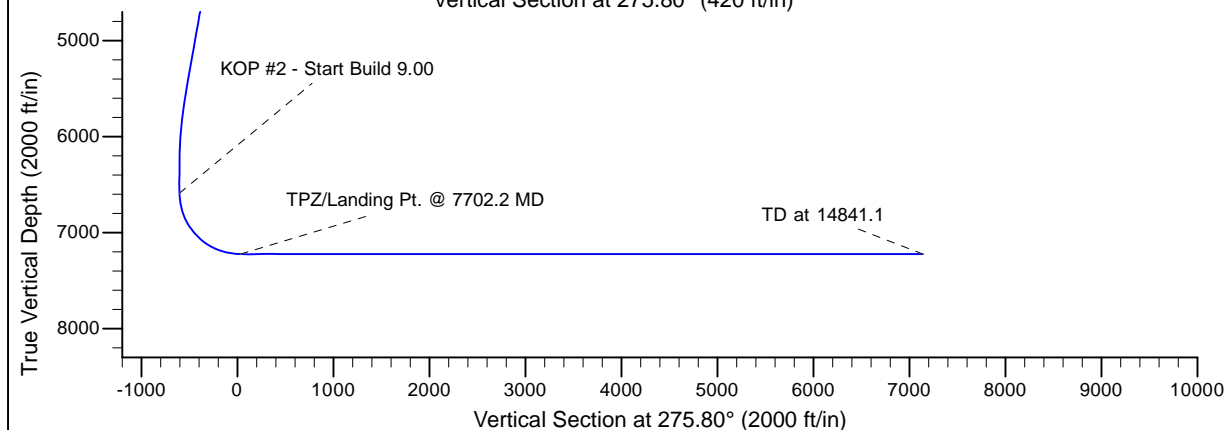
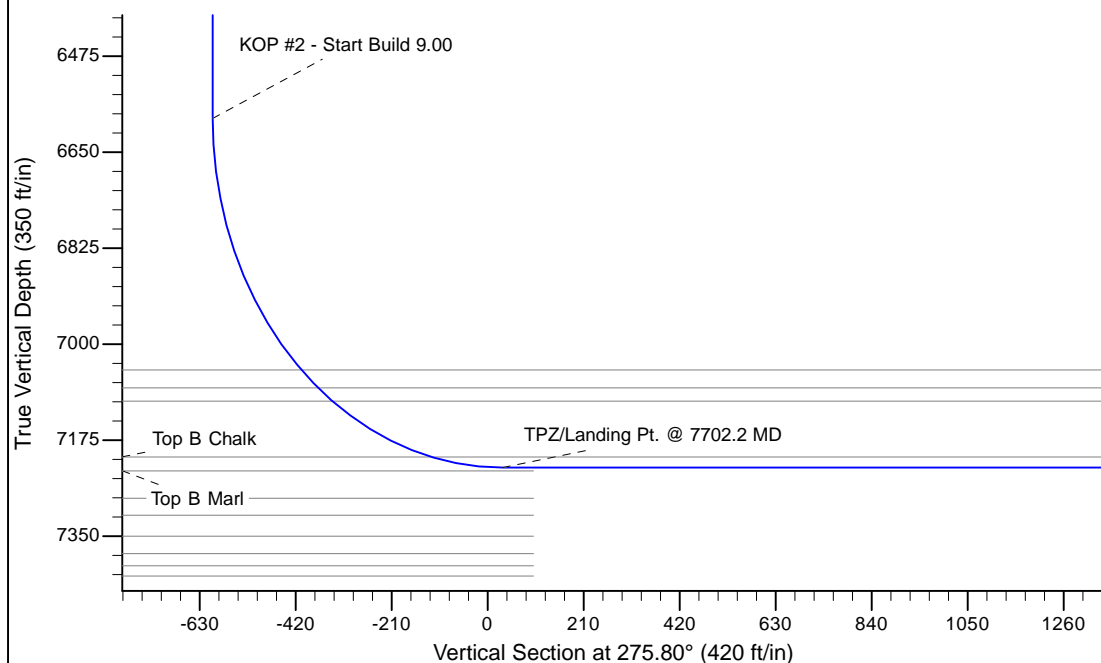
Project: Greeley Crescent  
 Site: J Section 29-T5N-R66W Weld County, CO  
 Well: Sanford J30-665  
 Wellbore: Original Drilling  
 Design: APD - Rev 1

# Northern Region - DJ Basin

Geodetic System: US State Plane 1983  
 Datum: North American Datum 1983  
 Ellipsoid: GRS 1980  
 Zone: Colorado Northern Zone  
 System Datum: Mean Sea Level

## SECTION DETAILS

Sec	MD	Inc	Azi	TVD	+N/-S	+E/-W	Dleg	TFace	VSect	Target
1	0.0	0.00	0.00	0.0	0.0	0.0	0.00	0.00	0.0	
2	2100.0	0.00	0.00	2100.0	0.0	0.0	0.00	0.00	0.0	
3	2853.2	15.06	46.31	2844.6	68.0	71.2	2.00	46.31	-64.0	
4	5660.5	15.06	46.31	5555.4	572.0	598.8	0.00	0.00	-538.0	
5	6413.8	0.00	0.00	6300.0	640.0	670.0	2.00	180.00	-601.9	
6	6702.2	0.00	0.00	6588.4	640.0	670.0	0.00	0.00	-601.9	
7	7702.2	90.00	270.60	7225.0	646.7	33.4	9.00	270.60	32.1	
8	14841.1	90.00	270.60	7225.0	721.3	-7105.1	0.00	0.00	7141.6	Sanford J30-665 BHL 1650'FNL, 460'FWL



WELL DETAILS: Sanford J30-665					
		Ground Elevation: 4901.0			
	Northing	Easting	Latitude	Longitude	
0.0	0.0	1378794.86	3193659.13	40.3711100	-104.8049500
Plan: APD - Rev 1 (Sanford J30-665/Original Drilling)					
Created By: Shailey Jewell			Date: 13:36, January 18 2017		
OK to submit with 2A as per Noble Drilling 1/18/2017 1:40					