

COUNTY
Field or
LOCATION
WELL

COMPANY

COMPANY Cineva USA IncWELL TE COATHAM 9XFIELD RAISLEYCOUNTY RIO BLANCO STATE CANADA

LOCATION N

API Serial No.

Other Services:

Sec. 35 Twp. 2N Rge. 102W

Permanent Datum:

52Elev. 5201Elev. K.B. 5215Log Measured From 118 , 14 ft. Above Perm. DatumD.F. G.L. 5201Drilling Measured From 118Date 10/24/80Run No. ONE

Casing Fluid

Fluid Level

Full

°F

Depth - Driller 6500'

Max. Rec. Temp.

Est. Cement Top

Unit

District

Recorded By

Witnessed By

Top

Bottom

31m. Log Interval 6497

Est. Cement Top

Unit

District

Recorded By

Witnessed By

Top

Bottom

Open Hole Size 16 80

Est. Cement Top

Unit

District

Recorded By

Witnessed By

Top

Bottom

Casing REC. Size 8 3/4

Est. Cement Top

Unit

District

Recorded By

Witnessed By

Top

Bottom

Surface String

Est. Cement Top

Unit

District

Recorded By

Witnessed By

Top

Bottom

Prot. String

Est. Cement Top

Unit

District

Recorded By

Witnessed By

Top

Bottom

Prod. String

Est. Cement Top

Unit

District

Recorded By

Witnessed By

Top

Bottom

Inner

Est. Cement Top

Unit

District

Recorded By

Witnessed By

Top

Bottom

STRING

Est. Cement Top

Unit

District

Recorded By

Witnessed By

Top

Bottom

Vol. of cement

Est. Cement Top

Unit

District

Recorded By

Witnessed By

Top

Bottom

Type of cement

Est. Cement Top

Unit

District

Recorded By

Witnessed By

Top

Bottom

Additive

Est. Cement Top

Unit

District

Recorded By

Witnessed By

Top

Bottom

Retarder

Est. Cement Top

Unit

District

Recorded By

Witnessed By

Top

Bottom

Wt. of slurry

Est. Cement Top

Unit

District

Recorded By

Witnessed By

Top

Bottom

Water loss

Est. Cement Top

Unit

District

Recorded By

Witnessed By

Top

Bottom

Type fluid in csg.

Est. Cement Top

Unit

District

Recorded By

Witnessed By

Top

Bottom

Fluid wt.

Est. Cement Top

Unit

District

Recorded By

Witnessed By

Top

Bottom

COGCC Doc#
2597272

FOLD HERE

The well name, location and borehole reference data were furnished by the customer.

PRIMARY CEMENTING DATA

☐ Actual ☐ Estimated Hour - Date

Started pumping cement

Release pressure

Start Cement Bond Log

Finish Cement Bond Log

REMARKS:

Service Order Number

Casing Collar Memory Distance

24' ft.

Radiation Log Memory Distance

19' ft.

Preceding fluid _____ Volume _____ bbls.

Cement pumped _____ bbls./minute

Pipe reciprocated during Pumping: Yes _____ No _____

Pipe reciprocated after plug down: Yes _____ min, No _____

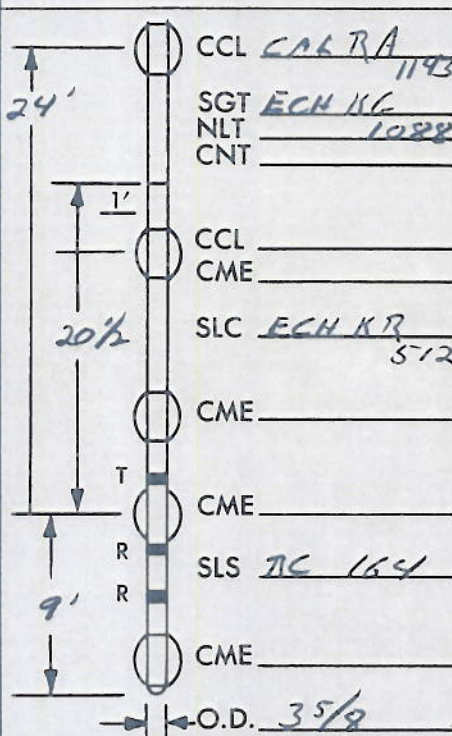
SQUEEZE JOB DETAIL

Squeeze number	1	2
Date		
Depth interval		
Type cement		
Volume of cement		
Additive		
Retarder		
Weight of slurry		
Preceding fluid		
Breakdown pressure		
Max. pressure-stage 1		
" " " 2		
" " " 3		
Final maximum pressure		
Started pumping cement		
Released pressure		
Start CBL		
Finish CBL		

AVERAGE WELL DRIFT:

from _____ to _____ ; ° from _____ to _____

DOWNHOLE EQUIPMENT



SURFACE EQUIPMENT

	TYPE	MOD
Sonic Panel	SLP	JH
Memorizer	TLP	CA
GNP		
CRP	CRP	BA
OWE		
CRP Intensity		
R9G Intensity		
Logging Speed		180
Time Constant		
Sweep Time μ -sec		
Amplitude mv/cm		
Casing Centralizer Pattern		
/Joint from		to
/Joint from		to
/Joint from		to
Casing Scratcher Pattern		
/Joint from		to
/Joint from		to
/Joint from		to

All interpretations are opinions based on inferences from electrical or other measurements and we cannot, and do not guarantee the accuracy or correctness of any interpretations, and we shall not, except in the case of gross or willful negligence on our part, be liable or responsible for any loss, costs, damages or expenses incurred sustained by anyone resulting from any interpretation made by any of our officers, agents or employees. These interpretations are also subject to Clause 4 of our General Terms and Conditions as set out in our current Price Schedule.

TRANSIT TIME

MICROSECONDS 3 SPACING

400 200

DEPTH

CASING BOND

MILLIVOLTS

0 50 200

VARIABLE DENSITY

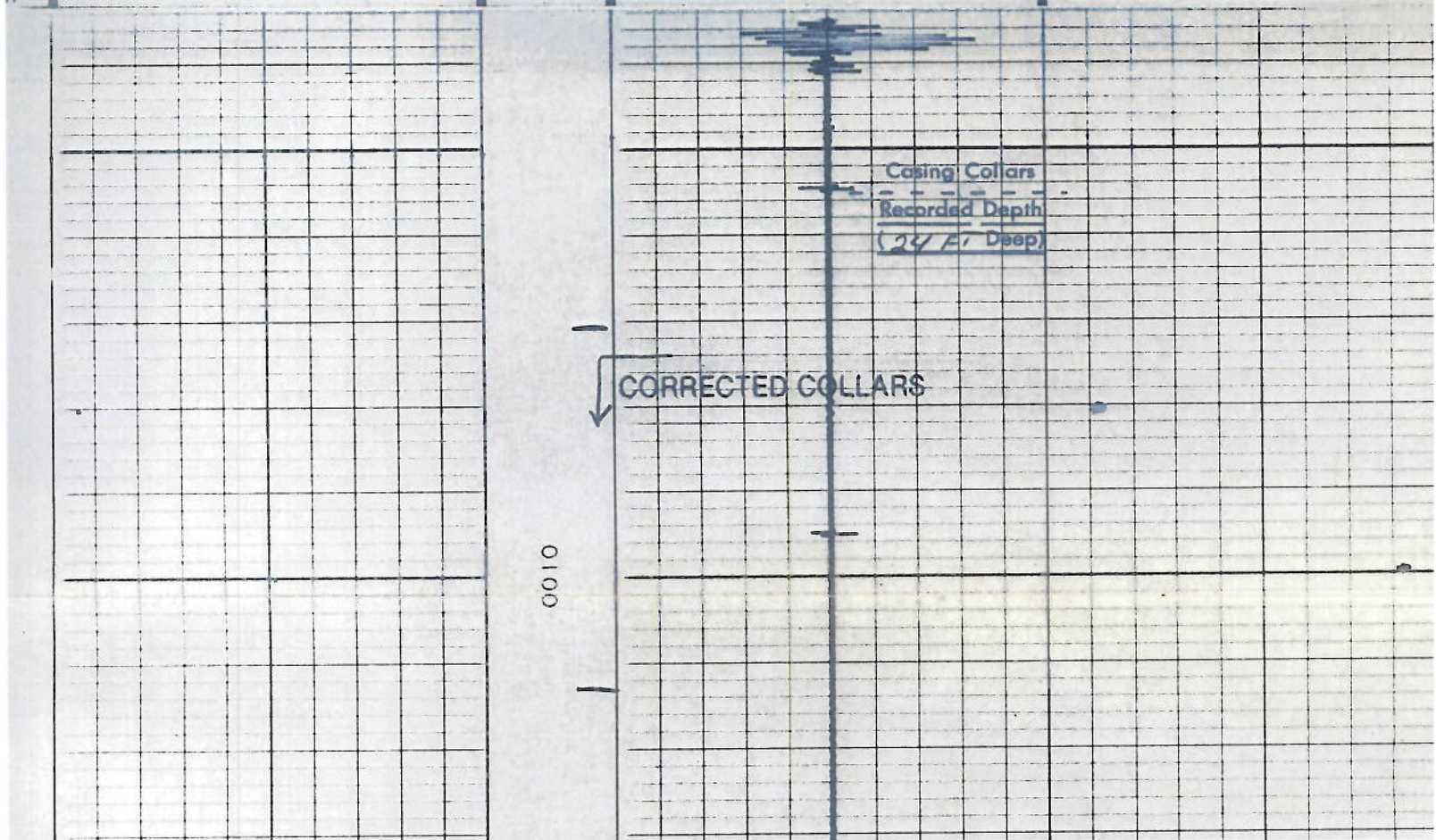
MICROSECONDS 5 SPACING

100 10

GAMMA RAY

API UNITS

AMPLIFIED CASING BOND



ΔT
AFTER SURVEY
CALIBRATION

GR
 ΔT

1700

1800

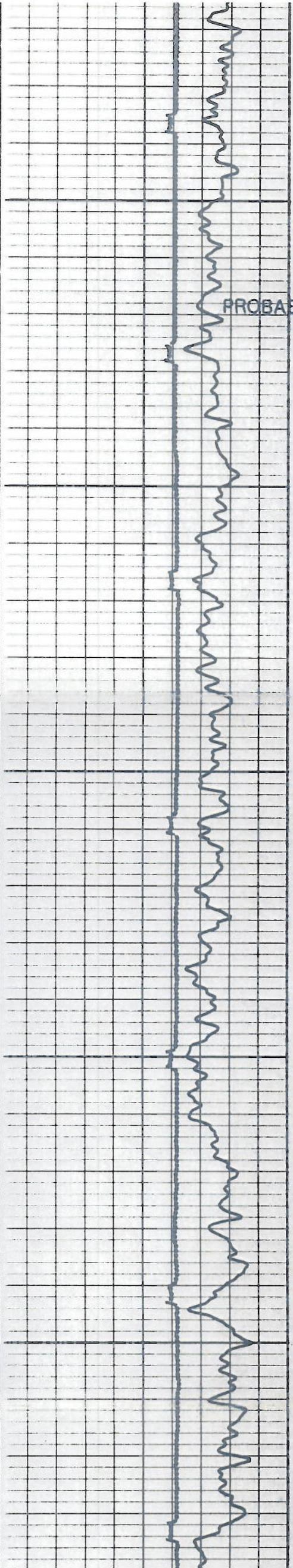
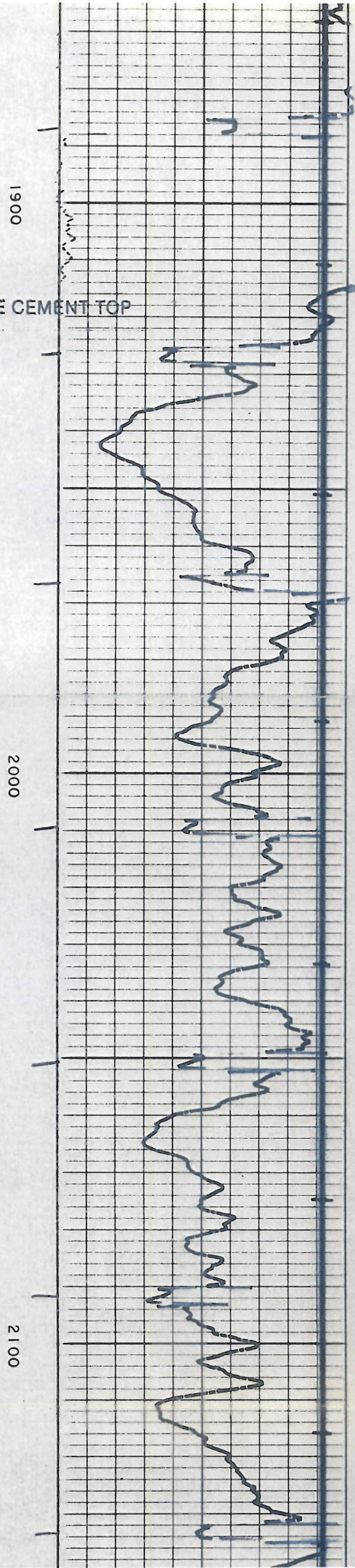
4
3
2
1

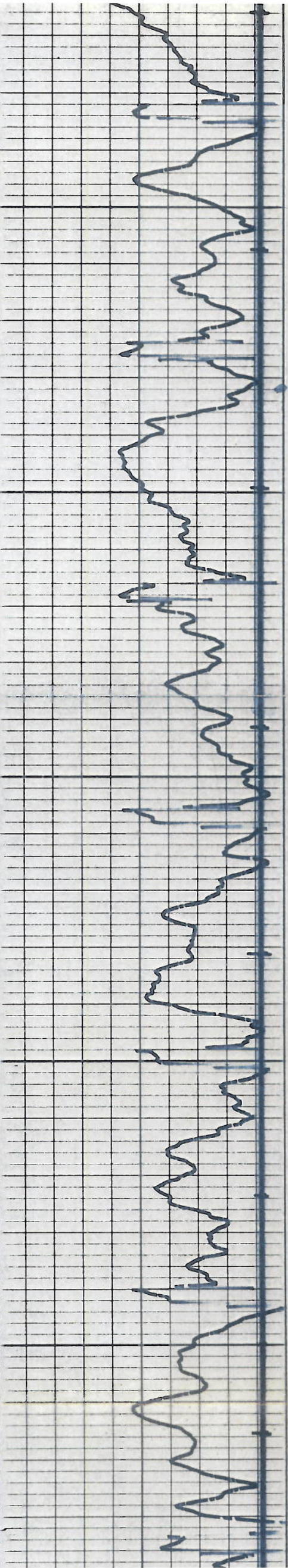
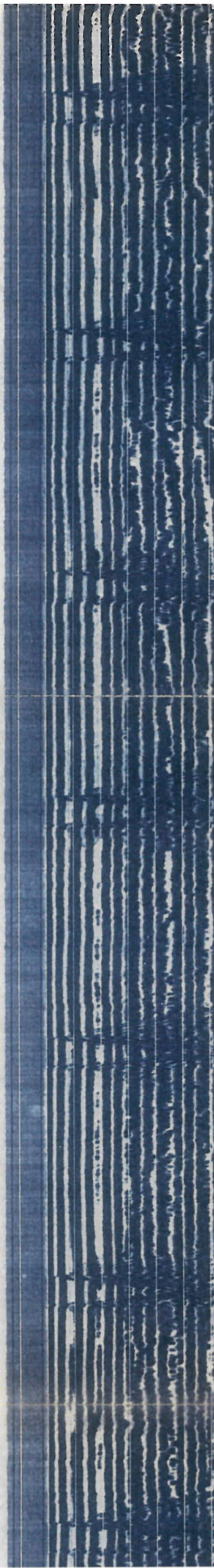
AMPLITUDE
AFTER SURVEY
CALIBRATION

Casing Collars
Recorded Depth
(24 FT Deep)

CORRECTED COLLARS

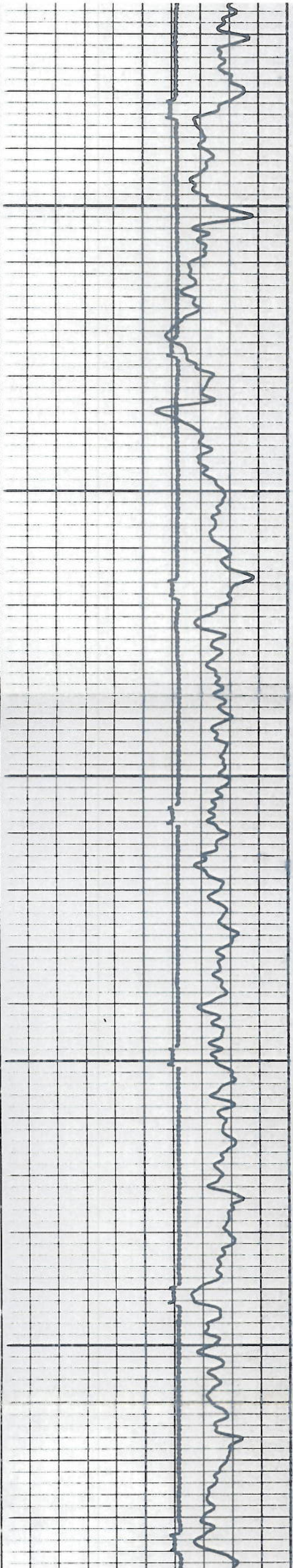
AMPLITUDE

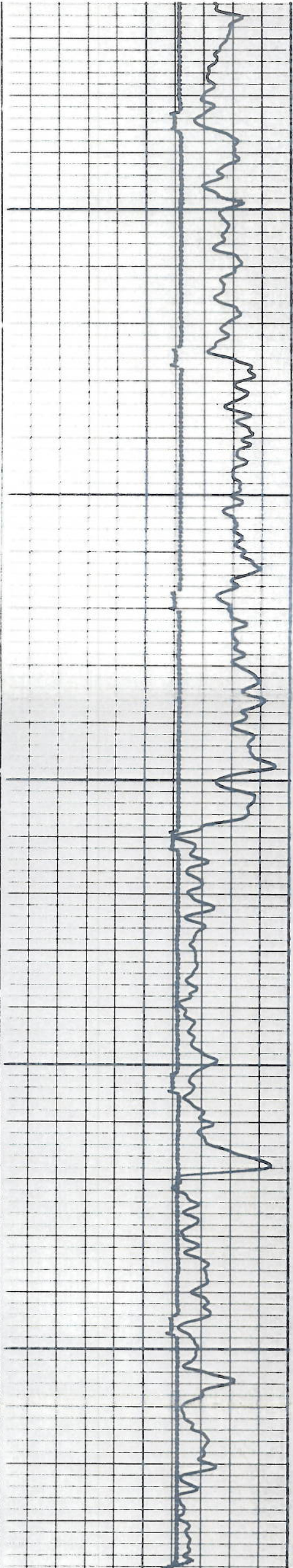
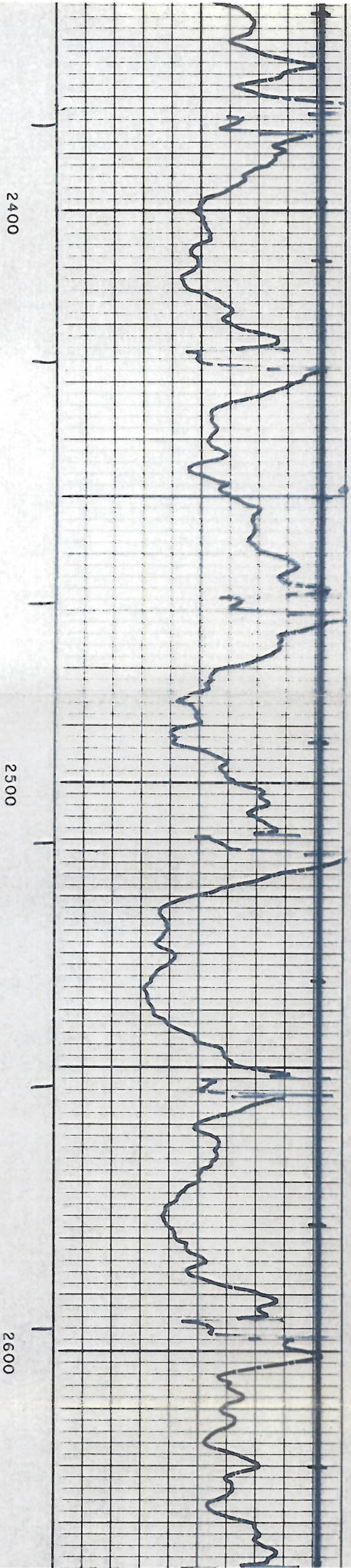
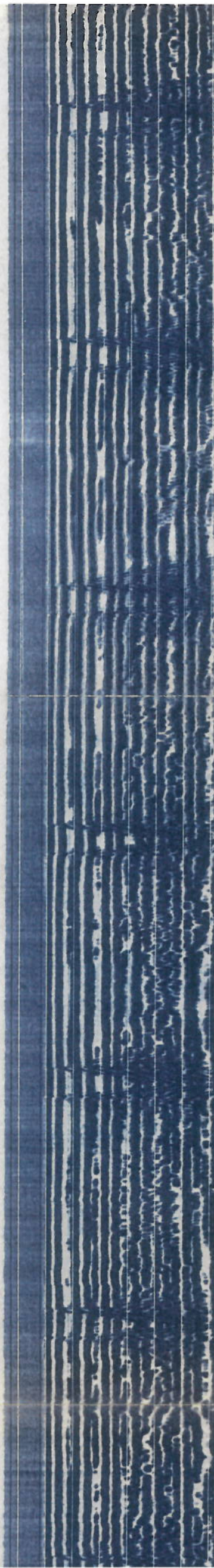


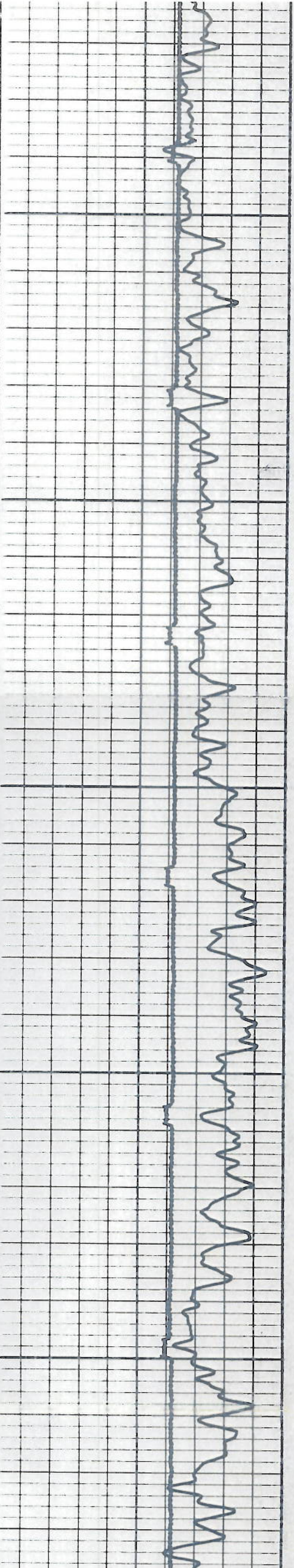
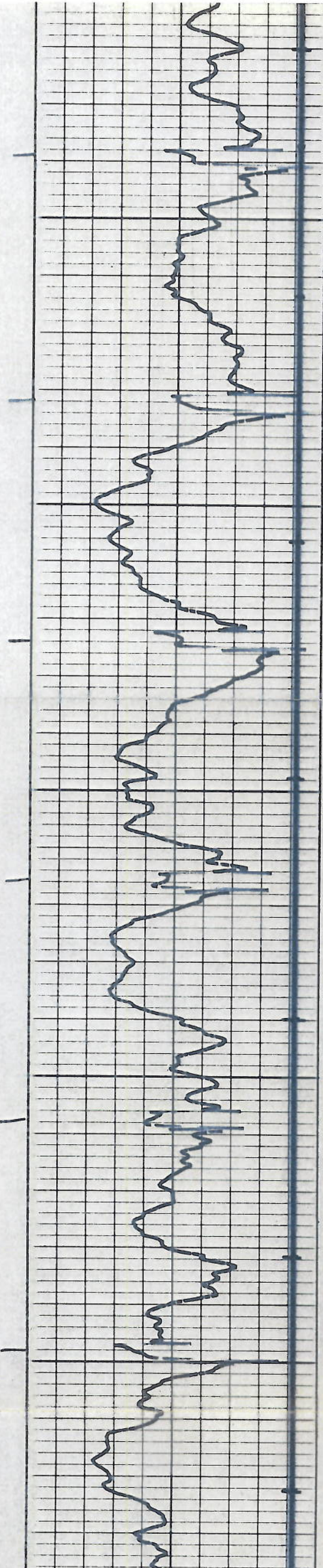
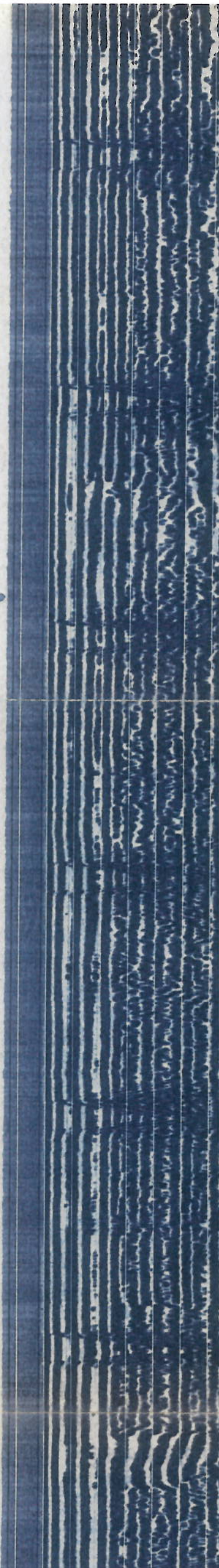


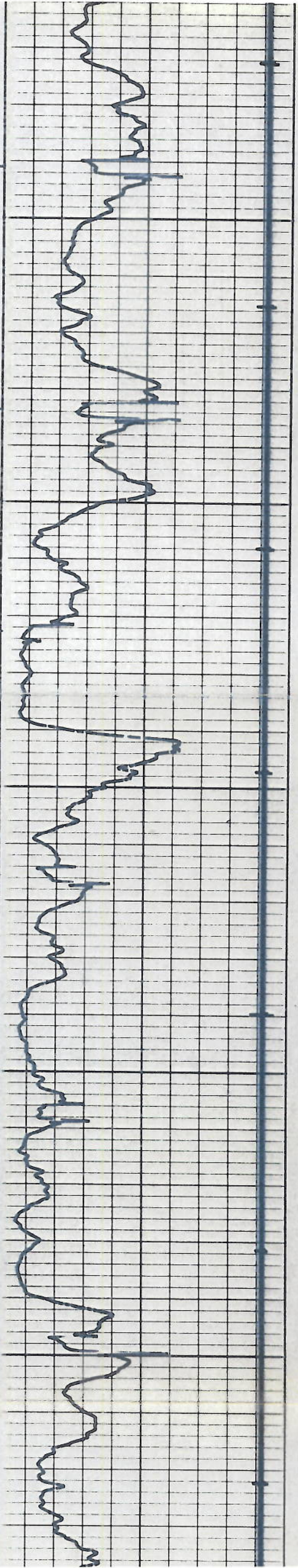
2200

2300





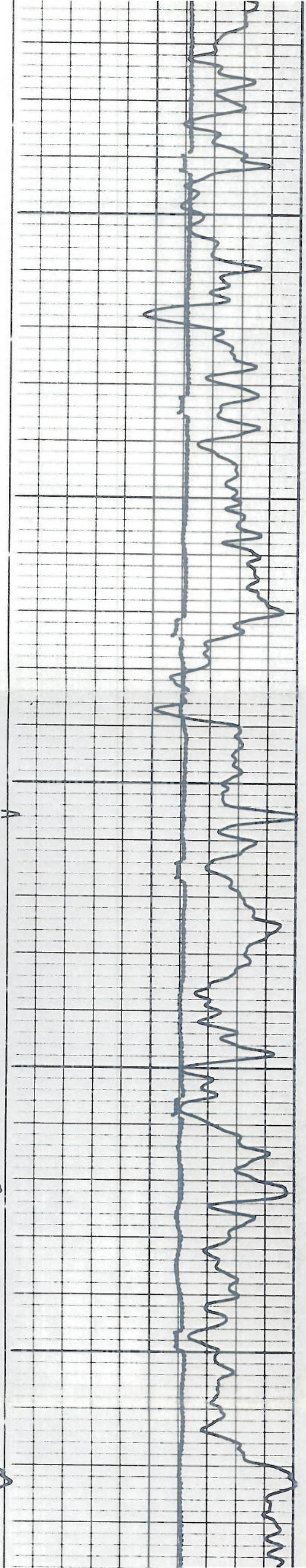


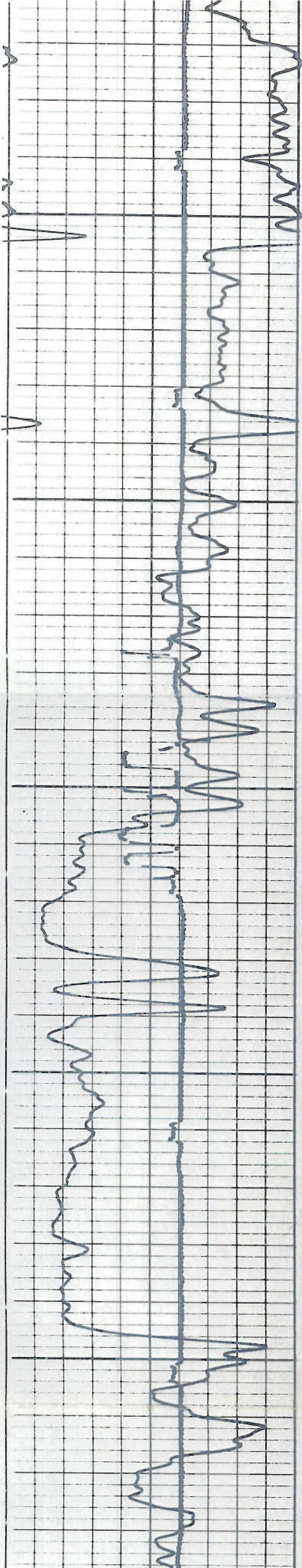
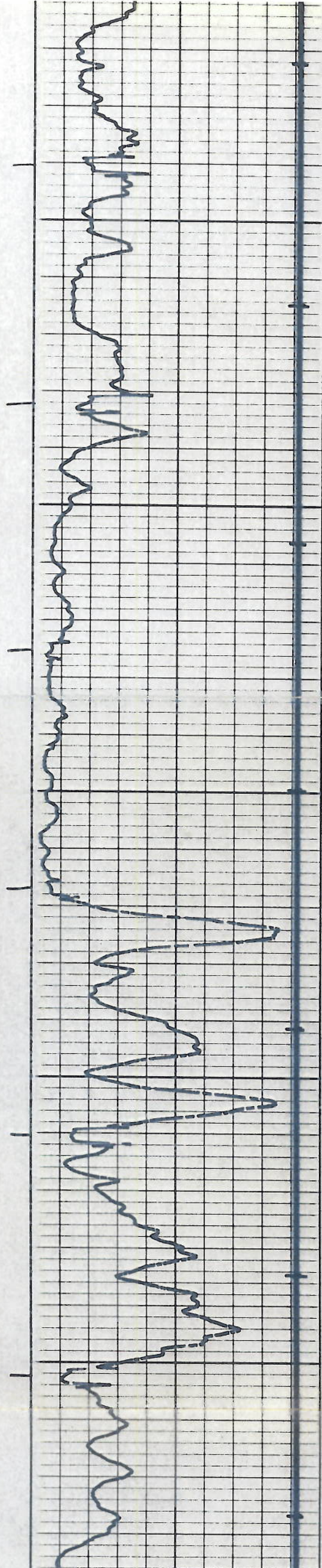
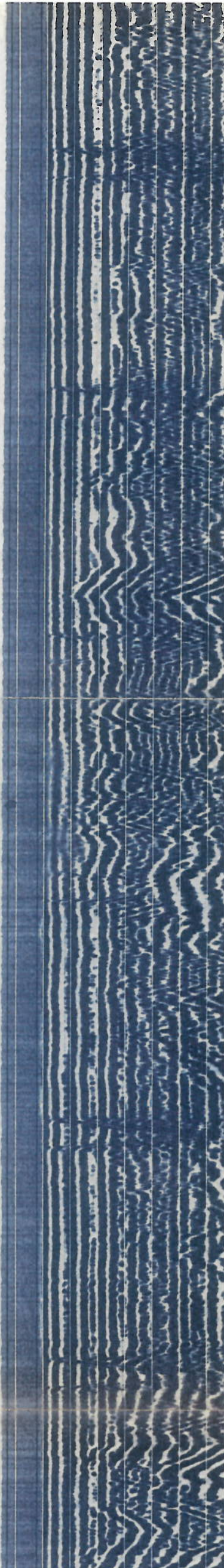


2900

3000

3100



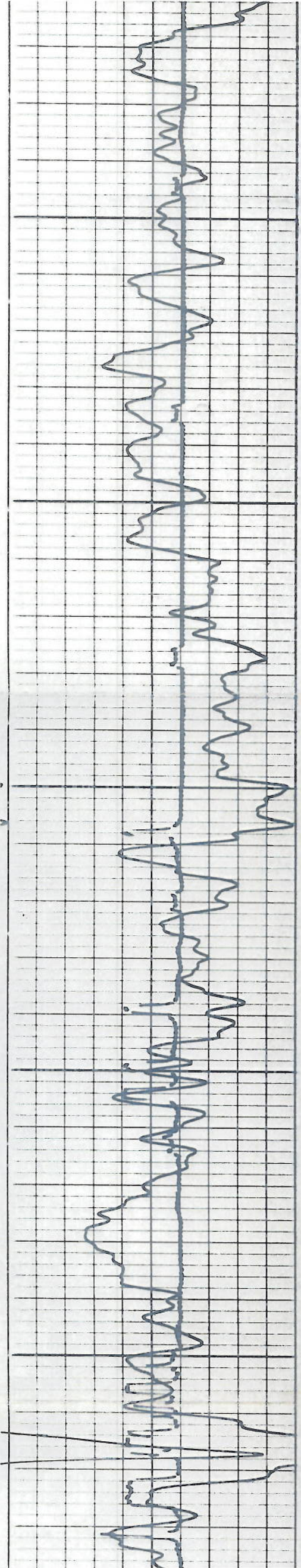


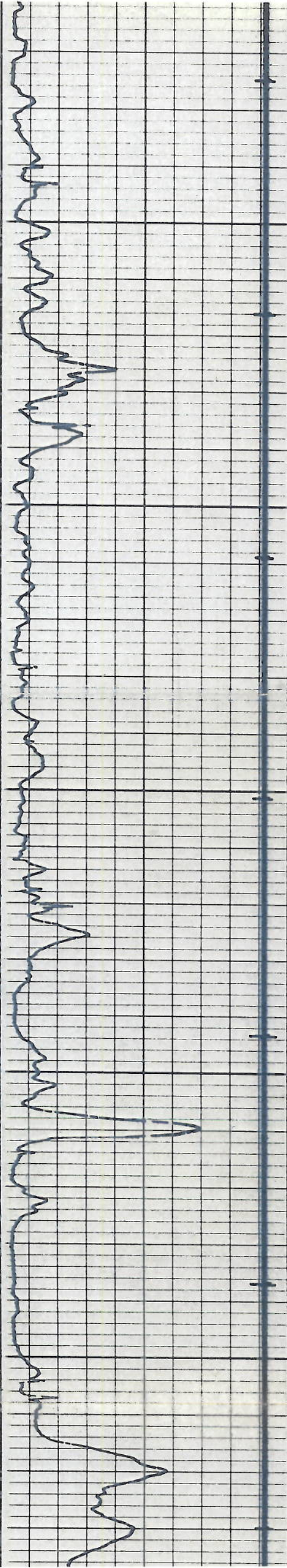


3400

3500

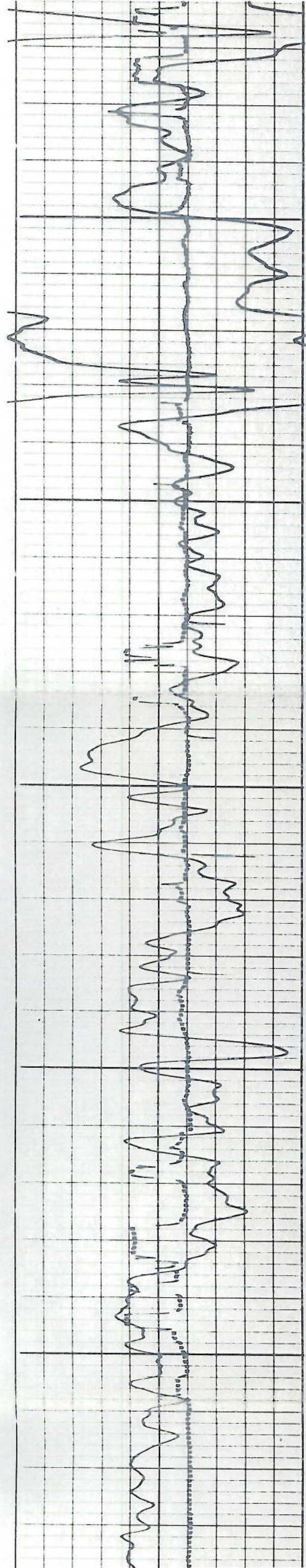
3600

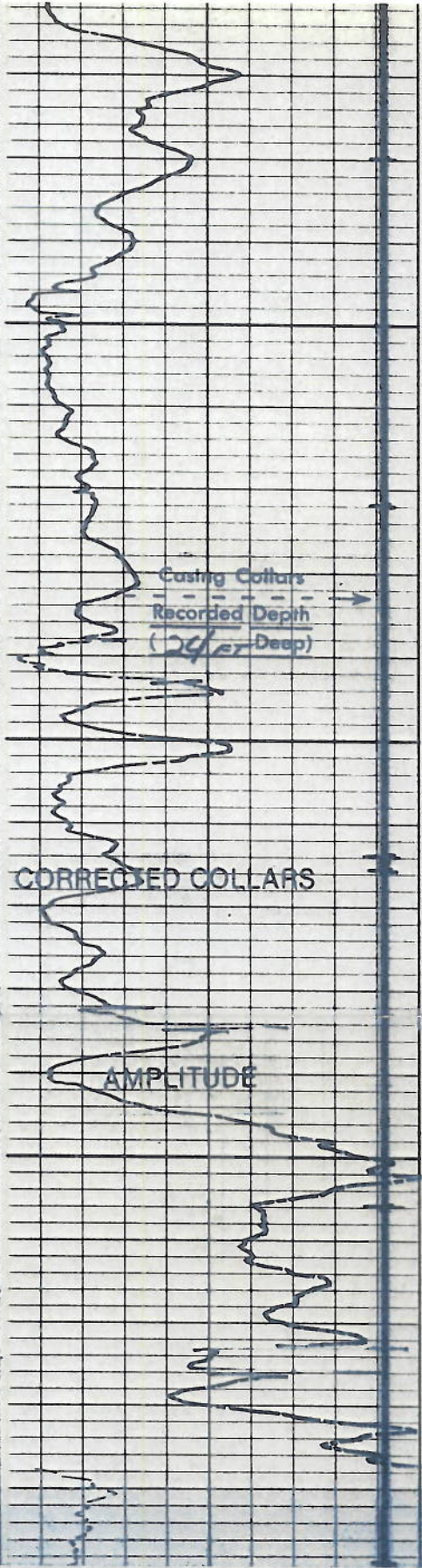
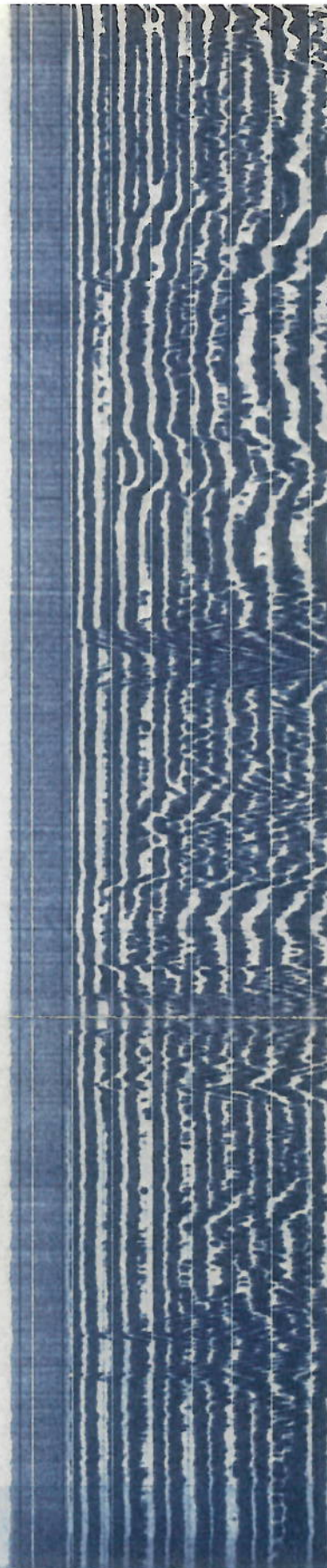




3700

3800





3900

4000



5000

